



# Protocols for the inventory and monitoring of populations of the endangered Australasian bittern (*Botaurus poiciloptilus*) in New Zealand



DOC TECHNICAL SERIES 38

Colin F.J. O'Donnell and Emma M. Williams

*Department of Conservation Technical Series* presents instructional guide books and data sets, aimed at the conservation officer in the field. Publications in this series are reviewed to ensure they represent standards of current best practice in the subject area.

This report is available from the departmental website in pdf form. Titles are listed in our catalogue on the website, refer [www.doc.govt.nz](http://www.doc.govt.nz) under *Publications*, then *Science & technical*.

© Copyright March 2015, New Zealand Department of Conservation

ISSN 1178-1009 (web PDF)

ISBN 978-0-478-15035-3 (web PDF)

This report was prepared for publication by the Publishing Team; editing by Amanda Todd and layout by Lynette Clelland. Publication was approved by the Deputy Director-General, Science and Capability Group, Department of Conservation, Wellington, New Zealand.

Published by Publishing Team, Department of Conservation, PO Box 10420, The Terrace, Wellington 6143, New Zealand.

In the interest of forest conservation, we support paperless electronic publishing.

# CONTENTS

Abstract	1
<hr/>	
1. Introduction	2
<hr/>	
2. Definitions of inventory and monitoring	3
<hr/>	
3. Why survey or monitor Australasian bittern populations?	3
<hr/>	
4. Inventory and monitoring options for Australasian bitterns	4
<hr/>	
4.1 Development of the call count method	4
4.2 Assumptions of the call count method	5
<hr/>	
5. Protocols for inventory and monitoring of Australasian bitterns	5
<hr/>	
5.1 Presence/absence during call inventories (inventory only)	5
5.2 Estimate (index) of the number of booming males using close approaches in small wetlands (< 250 ha) (inventory & monitoring)	8
5.3 Estimate (index) of the number of booming males using triangulation in small wetlands (< 250 ha) (inventory & monitoring)	10
5.4 Estimate (index) of the number of booming males using Acoustic Recording Devices (ARDs) (inventory & monitoring)	12
<hr/>	
6. Decision guide to choosing protocols for a one-off survey versus long-term monitoring of Australasian bitterns	16
<hr/>	
7. Acknowledgements	18
<hr/>	
8. References	18
<hr/>	
Appendix 1	
<hr/>	
Instructions for using automatic Acoustic Recording Devices (ARDs) (Ver B.2) for monitoring Australasian bitterns ( <i>Botaurus poiciloptilus</i> ) (adapted from Acoustic Recorder Instructions Ver B.2, Stuart Cockburn, Department of Conservation, Wellington)	20
A1.1 Equipment	20
A1.2 How the recorder works	20
A1.3 Setting up the recorder	21
A1.4 Deployment of units for bittern monitoring	22
A1.5 Problems and queries?	22
<hr/>	
Appendix 2	
<hr/>	
Criteria for recording climate variables during bittern counts	23
A2.1 Noise	23
A2.2 Wind strength	23
A2.3 Moon visibility	23

### Appendix 3

---

Standard field sheet for recording bittern counts from general or triangulation surveys	24
---	----

### Appendix 4

---

Triangulation example	25
-----------------------	----

### Appendix 5

---

Detecting the calls of Australasian bitterns ( <i>Botaurus poiciloptilus</i> ) by visually analysing sound files (E. Williams unpubl. thesis)	26
A5.1 Choosing a software package	26
A5.2 Downloading the software	26
A5.3 Opening the sound files (using both RavenLite and RavenPro)	26
A5.4 Detecting bittern booms	33
A5.5 Listening to files to confirm booms	34
A5.6 Creating window presets (RavenPro only)	35
A5.7 Selecting additional attributes to be measured (RavenPro only)	35
A5.8 Measuring additional attributes of the call (RavenPro only)	38
A5.9 Processing your sound files and entering your data	39

### Appendix 6

---

Example of data obtained from automatic recording stations	40
--	----

# Protocols for the inventory and monitoring of populations of the endangered Australasian bittern (*Botaurus poiciloptilus*) in New Zealand

Colin F.J. O'Donnell<sup>1</sup> and Emma M. Williams<sup>1,2</sup>

<sup>1</sup> Ecosystems and Species Unit, Department of Conservation, PO Box 4715, Christchurch 8140, New Zealand. [codonnell@doc.govt.nz](mailto:codonnell@doc.govt.nz)

<sup>2</sup> Present address: Ecology Group, Massey University, PN624, Private Bag 11222, Palmerston North 4442, New Zealand.

## Abstract

There is an urgent need for conservation managers to undertake inventory and monitoring programmes for the endangered Australasian bittern (*Botaurus poiciloptilus*; matuku) in New Zealand. Such programmes can be used to determine the distribution and relative abundance of Australasian bitterns nationally; identify significant habitats, sites and populations to enable their protection and implement conservation management; measure the response and effectiveness of management practices; and measure the health of wetlands. This report describes four protocols for the inventory and monitoring of Australasian bitterns, and also provides a guide to choosing the most appropriate method for a particular objective. The protocols build on previous methods that have been developed in other countries, testing and adapting them for New Zealand conditions, and extending them through the use of automatic recording approaches, which allow efficient sampling in remote and inaccessible locations. The protocols represent current 'best practice', but further refinements will likely be made in the future.

**Keywords:** Australasian bittern, *Botaurus poiciloptilus*, wetlands, inventory, monitoring, conservation management, call counts, acoustic recorders, threatened species

© Copyright March 2015, Department of Conservation. This paper may be cited as:  
O'Donnell, C.F.J.; Williams, E.M. 2015: Protocols for the inventory and monitoring of populations of the endangered Australasian bittern (*Botaurus poiciloptilus*) in New Zealand. *Department of Conservation Technical Series 38*. Department of Conservation, Wellington. 40 p.

# 1. Introduction

Management of threatened species is one of the major challenges faced by conservation managers. Managers rely on monitoring to assess whether species' populations are declining, where declines are occurring, the rate of decline and the response of populations to conservation management (Kéry & Schmidt 2008). However, the development and application of monitoring methods can be problematic, even for the most perceptible of species—and when the target species is cryptic or difficult to detect, these challenges are even greater (Clarke et al. 2003). In the case of cryptic species, data are often difficult to interpret, and contain biases and errors that frequently cannot be estimated, making results less meaningful (Clarke et al. 2003). Yet the consequences of not monitoring these species are still high—a threatened cryptic species will only get harder to monitor as it declines, and without the ability to identify the causes of declines and reverse them, extinction can become inevitable.

The Australasian bittern (*Botaurus poiciloptilus*; matuku) is a highly cryptic, endangered swamp bird that is threatened throughout its range in New Zealand, New Caledonia and southern Australia (Miskelly et al. 2008; Birdlife International 2013). Although Australasian bitterns are large, stocky birds, they are difficult to see at any time of the year and are one of the best camouflaged bird species in New Zealand (Fig. 1). Their streaky dark-brown and beige plumage allows them to blend in perfectly with the vegetation in most of the wetlands they inhabit (Heather & Robertson 2000).

Globally, there has been little research on Australasian bitterns, and little has been published about the threats to and ecology of this species (Kushlan 2007; O'Donnell 2011). In New Zealand, bittern numbers were estimated at fewer than 800 birds nationally in the 1980s (Heather & Robertson 2000). There is currently no information regarding the extent of decline for this species (O'Donnell 2011), but historical anecdotal literature implies that these birds were once abundant and declines have been considerable (e.g. Potts 1869; Hamilton 1885; Buller 1892; Drew 1896). Australasian bitterns are reliant on wetlands for breeding and feeding (Heather &



Figure 1. A typically well camouflaged Australasian bittern (*Botaurus poiciloptilus*) concealed in oi (*Leptocarpus similis*) rushlands. Photo: Peter Langlands, WildCapture.

Robertson 2000; O'Donnell 2011), and present-day wetland areas in New Zealand represent only 10% of their original extent (Ausseil et al. 2011). Thus, the decline in the bittern population is likely to have been proportional to this and severe.

This report describes protocols for the inventory and monitoring of Australasian bitterns, developed as part of a Department of Conservation research programme that aims to provide tools for conserving threatened species. It also provides a guide to choosing the most appropriate method for a particular objective. The protocols represent current 'best practice', but further refinements will likely be made in the future.

## 2. Definitions of inventory and monitoring

The objectives and design of a programme will vary depending on whether a person is interested in carrying out a one-off inventory (or baseline survey) of populations of a species at a particular site or sites, or in monitoring longer term population trends.

**Inventories** usually focus on determining the significance of a site for a species. Information obtained may:

- Simply determine the presence or absence of the species at a site—the presence of a threatened species at a site is significant in its own right (Myers et al. 1987)
- Establish a baseline distribution map and map the number of individuals
- Associate sightings with habitat types

Such information helps to determine where longer term monitoring and management should be focused; to assess a site's significance in the context of the Resource Management Act (1991), or regional or local plans; or to assist with assessing ecological impacts of proposed developments.

**Population monitoring** requires longer term approaches, where counts are standardised and repeated using the same method at regular intervals. Monitoring is often conducted to:

- Evaluate the conservation status and trend of a species (is it increasing, stable or decreasing?)
- Assess the success of management and use the results to adapt or experiment with management practices
- Report to others the results of management or population trends

## 3. Why survey or monitor Australasian bittern populations?

Little information is available regarding current threats to bittern populations. Therefore, there is a need to quantify the extent of decline in bittern populations, determine where declines have occurred and identify factors causing these declines, so that key habitats can be managed and restored effectively (Buchanan 2009; O'Donnell 2011). To do this, there is an urgent need for conservation managers to undertake inventory and monitoring programmes that:

### 1. Determine the distribution and relative abundance of Australasian bitterns nationally.

These data are required to identify:

- a. Significant habitats, sites and populations to enable protection
- b. Important sites to implement conservation management

2. **Identify the habitat requirements of Australasian bitterns at a national level.** This is essential for identifying areas of importance and prioritising restoration efforts.
3. **Measure the response and effectiveness of management practices at key bittern sites.** For example, responses to pest control, habitat maintenance and restoration.
4. **Measure the health of wetlands.** For example, bitterns can be used as an indicator species of the status of specialist wetland bird species, because they rely on good water quality, productive food webs, and healthy, fluctuating water regimes (White et al. 2006).

## 4. Inventory and monitoring options for Australasian bitterns

Ideally, a complete count of a population would be made to measure its size and determine trends in abundance (Thompson 2004). However, it is impossible to undertake total counts of Australasian bittern populations because individuals are so well camouflaged and highly cryptic in the wetlands they inhabit. Furthermore, their cryptic behaviour and plumage means that they have a particularly low probability of detection using ordinary monitoring methods. Consequently, alternative indirect methods or indices of relative abundance are required.

The 12 living bittern species that make up the subfamily Botaurinae within the heron family Ardeidae (Kushlan & Hancock 2005) are all cryptic and a challenge to monitor. We reviewed the range of methods that is available globally for inventory and monitoring of these species (E. Williams, unpubl. data). This review showed that most standard monitoring methods (e.g. territory mapping, mark-recapture methods, vocal individuality, double observer approach, distance sampling) are currently inadequate for Australasian bitterns because they are extremely labour intensive, rely on identifying individuals, require high detection or re-sighting probabilities and/or have low precision; and more research is required before the feasibility of other potential methods (e.g. thermal imagery, camera traps, motion/heat detectors, use of dogs to detect scent) can be determined (E. Williams, unpubl. data).

Thus, we decided to develop protocols that are specific to Australasian bitterns, based on counts of the number of male bitterns booming (number of boom trains per sampling period, where one boom train can be defined as a sequence of individual booms uttered by a single bird; Gilbert et al. 1994).

### 4.1 Development of the call count method

Research to develop and test the protocols outlined in Section 5 focused on optimising counts by identifying when booming bitterns are most detectable and least variable in relation to environmental factors, calibrating call counts against estimates of density, and designing protocols that suit a range of different situations (Williams et al., unpubl. data; O'Donnell et al. 2013). The wealth of literature on monitoring bitterns and other swamp bird species in other countries using call counts was used as an initial guide (e.g. Poulin & Lefebvre 2003a, b; Lefebvre & Poulin 2003; Conway 2009). In addition, we also extended previous work by testing automatic recording approaches, which allow efficient sampling in remote and inaccessible locations.



## 4.2 Assumptions of the call count method

The protocols outlined in Section 5 focus on counting booming male bitterns during the breeding season. They have been designed specifically to maximise detection rates and should be considered indices of relative abundance rather than true censuses, largely because we do not know how many female and non-booming birds are present in a wetland, and there may be an unknown number of birds that do not boom on any particular visit. Nevertheless, the protocols provide a count of booming males on a given day. Use of the number of booming males as a measure of relative abundance for a highly cryptic bird has been shown to be an informative and useful tool for conservation managers of the Eurasian bittern (*Botaurus stellaris*) (e.g. Adamo et al. 2004; Poulin et al. 2009; van Turnhout et al. 2010).

# 5. Protocols for inventory and monitoring of Australasian bitterns

## 5.1 Presence/absence during call inventories (inventory only)

### *About this protocol*

- **Measures:** Presence of bitterns during evening call inventories at a wetland, providing simple statistics such as:
  - The proportion of sites within a wetland with booming bitterns
  - Time to first detection
- **Means of detection:** Detects the calls of breeding males (booms) using observer(s) stationed around a wetland or using automatic Acoustic Recording Devices (ARDs).
- **Suitability:** This method is suitable for recording the distribution and presence of bitterns at a site.
- **Advantages:** A relatively quick method that requires a minimum of resources.
- **Disadvantages:** Inventories provide little information on the relative abundance of bitterns and no data on population trends. Not detecting a bittern does not mean they are absent—it may be that birds were silent during the inventory because conditions were unsuitable or they were somewhere else in the wetland at the time. It is feasible that bitterns use certain wetlands at different times of the year or that conditions at a site are not suitable for bitterns every year; for example, bitterns will not be present if a wetland is dry in a particular year. Therefore, observers should examine historical records for their region and use common sense when assessing the adequacy of an inventory and whether repeated surveys are needed.
- **Differences between inventory and monitoring approaches:** This method is not suitable for long-term monitoring of numbers, although it may be used to monitor changes in distribution.

### *Field protocol*

- Observers position themselves at accessible locations (preferably c. 500 m apart) around the shores of the wetland, recording the presence of booming bitterns. Locations could be estimated using triangulation if the wetland is small (see Protocol 5.3). Acoustic Recording Devices (ARDs) can be used in place of observers (see Appendix 1 for instructions).

### When should counts be made?

- **Time of year:** Best during September, October and early November, during the peak calling season (Fig. 2).
- **Time of day:** If using observers, best during the peak evening calling period (30 minutes before local sunset to 1 hour after local sunset (Fig. 3B). Although the calling rate is often higher 1.5 hours before dawn (Fig. 3A), it is more practical for observers to work at dusk, and if bitterns are present at a site they are equally likely to be detected at dusk. However, if using ARDs, the dawn period should also be targeted.
- **Number of visits:** If booming bitterns are present, it is reasonable to expect them to be detected in 1–3 nights of listening. If listening outside the peak period (e.g. early September or late November) when booming call rates are less frequent, it may be prudent to survey for more nights if birds were not detected after the third night.
- **Frequency:** Opportunistic.
- **Survey conditions:** Conduct counts in calm, fine weather, and avoid listening during rain, strong wind and when there are other excessive noises (planes, trains, automobiles). See Appendix 2 for a list of criteria used by observers listening for bitterns in the field. Various weather variables also need to be obtained *post hoc* from local or national weather stations, including moon visibility, mean rainfall and cloud cover (E. Williams et al. unpubl. data), as this helps when analysing and interpreting the results.

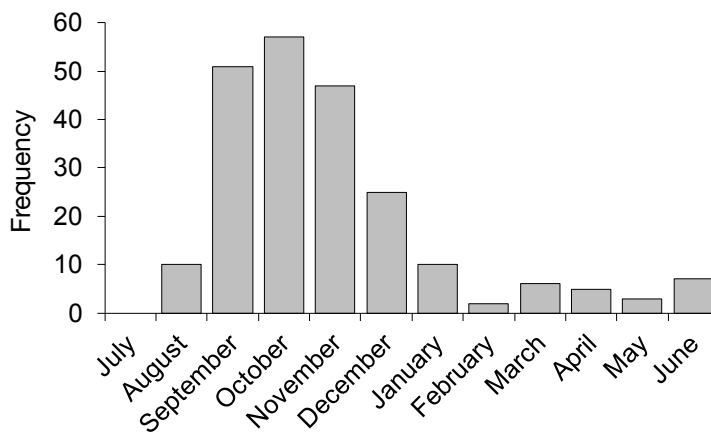


Figure 2. Frequency of occurrence of records of booming Australasian bitterns (*Botaurus poiciloptilus*) through the year. (Taken from the Department of Conservation national bittern database and updated from O'Donnell (2011);  $n = 212$  reports)

### Where should counts be made?

- **Number of count stations:** Bittern booms can be heard over 1 km away in quiet conditions. Therefore, depending on the size of the wetland, presence could be relatively easy to detect from a minimum of listening stations.
- **Location of count stations:** Spread stations widely to obtain listening coverage of the entire wetland.
- **Distance between counts stations:** Not fixed, but 500 m is adequate.

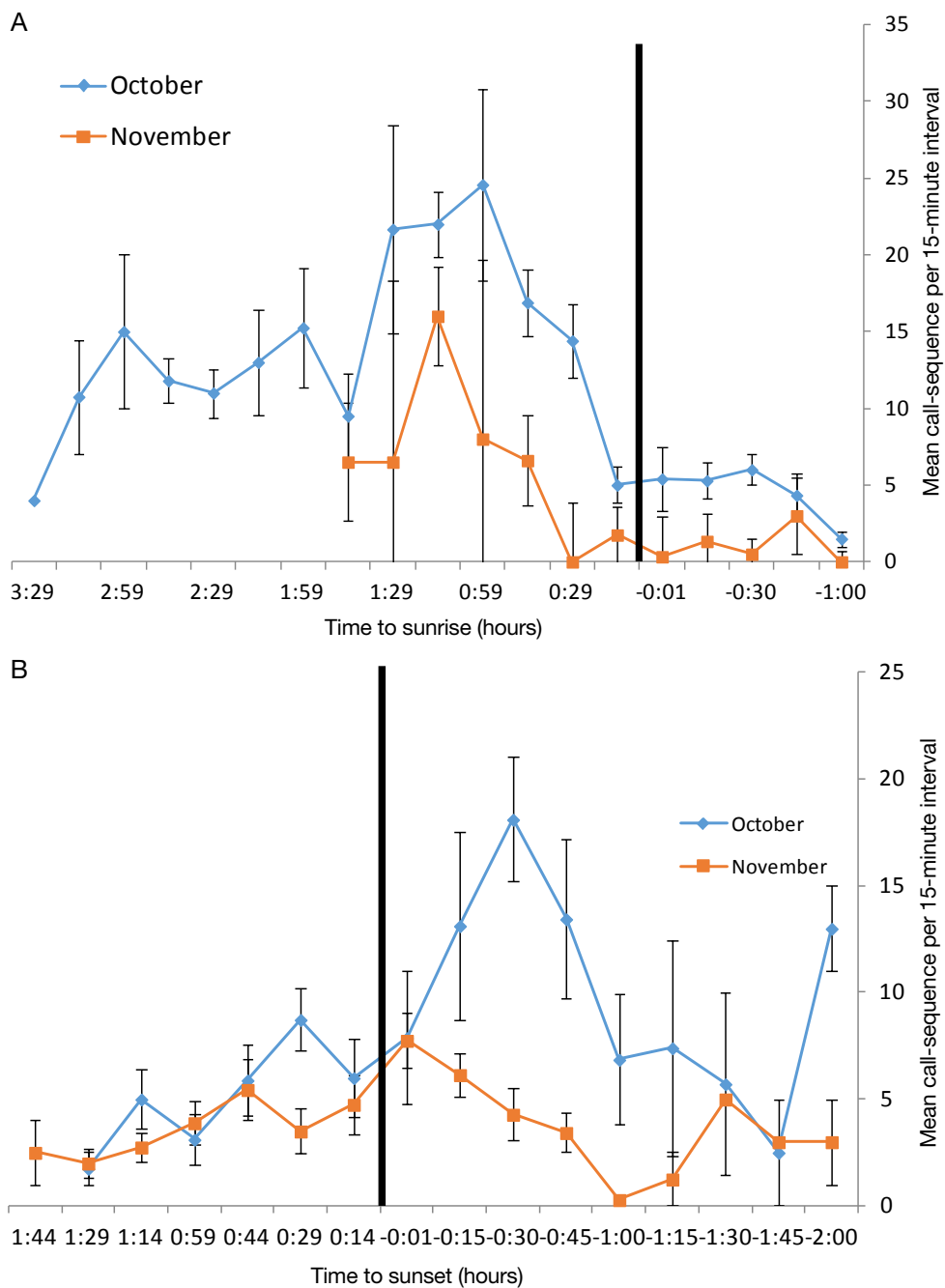


Figure 3. Nightly pattern of mean ( $\pm$  SE) numbers of Australasian bittern (*Botaurus poiciloptilus*) call sequences detected at A. sunrise and B. sunset at Whangamarino wetland, 2009–10 (vertical axes represent the time of sunrise and sunset). E. Williams et al. unpubl. data.

### Data recording

- **Datasheets:** No specific datasheets are needed for presence/absence surveys, although the standard field form that is used for monitoring can be used (Appendix 3; DOCDM-1298092<sup>1</sup>).
- **Data storage:** Enter data into the Department of Conservation’s national bittern database (a Microsoft Excel spreadsheet; DOCDM-712082) or send records to the authors.
- **Analysis and reporting:** The level of analysis and interpretation that is possible will depend on the adequacy of the survey. Reporting will simply include whether any bitterns were recorded at the site, how many were recorded and their locations.

<sup>1</sup> These numbers relate to the Department of Conservation’s internal file repository. If you do not have access to this, please contact one of the authors for a copy of this.

## 5.2 Estimate (index) of the number of booming males using close approaches in small wetlands (< 250 ha) (inventory and monitoring)

### *About this protocol*

- **Measures:** Evening counts of booming males using observers in kayaks or other small, quiet watercraft who approach and map birds (O'Donnell et al. 2013). Counts can be repeated in the same way annually to obtain data on changes in:
  - The mean number of birds detected
  - The number/location of booming bitterns
- **Means of detection:** Detects the calls of breeding males (booms) using an observer or observers moving around a wetland.
- **Suitability:** This method is particularly suitable for small lakes that have a narrow fringe of swamp vegetation, as there will be little confusion between the locations of individual birds if the method is followed. This method is not suitable for larger wetlands because the ability to differentiate between individuals becomes less precise and inaccurate as the number of individuals increases and calls of distant bitterns overlap those of nearby bitterns. If observers get saturated by too many calling birds, or if there is insufficient time between calls to estimate the distance of calls reliably and distinguish individuals consistently, then results will be imprecise and variable.
- **Advantages:** A relatively quick method that gives immediate results.
- **Disadvantages:** Only suitable in a limited number of situations (small lakes with narrow fringes of vegetation), and usually dependent on being able to use kayaks or other quiet watercraft.
- **Differences between inventory and monitoring approaches:** Can be used for both inventory and monitoring. When this method is used for long-term monitoring, counts must be undertaken over a shorter standardised timeframe (see 'Time of year' below) with a minimum of three repeat counts for each survey period per year.

### *Field protocol*

- Observers slowly circumnavigate the lake or wetland using a kayak, noting the presence of booming birds as they pass them around the margin.
- Observers quietly paddle towards each booming bittern, repeatedly taking note of the bearing and subjectively guessing distance. It is possible to quietly home in on booming birds without disturbing them by sitting off the reed beds in a kayak (O'Donnell et al. 2013). Booming birds will not take flight during the surveys if observers are quiet. It is possible to approach calling birds from more than one direction or even circle a calling bird to improve confidence in estimates of its location.
- When confident of the location of a booming bird, and that booms are not being produced by more than one bird at that location, observers note the location on a map or record the coordinates using GPS, and then move on to where the next bird is calling along the lake shore.
- This technique relies on spending as long as the observer thinks is required to be confident about the locations of all booming birds on the lake. For example, surveys of the 150-ha Lake Hatuma by O'Donnell et al. (2013) took 5 hours using one observer and 3.5 hours using three observers.
- Multiple observers should confer during and after surveys to confirm bittern locations.

### *When should counts be made?*

- **Time of year:** September, October and early November, during the peak calling season for one-off inventory, BUT a shorter period (last 2 weeks of September and all of October) during the highest calling period for monitoring (Fig. 2).
- **Time of day:** Afternoon surveys that intersect peak calling 30 minutes before local sunset to 1 hour after local sunset during the peak evening calling period (Fig. 3B). Although the calling rate is often higher 2 hours before dawn (Fig. 3A), it is more practical for observers to work during daylight.
- **Number of visits:** 1+ nights for inventory; 3 nights for monitoring.
- **Frequency:** Annual for monitoring.
- **Survey conditions:** Conduct counts in calm, fine weather, and avoid listening during rain, strong wind and when there are other excessive noises (planes, trains, automobiles). Cloud cover must be recorded, as this helps when analysing and interpreting the results (E. Williams et al. unpubl. data). For criteria, see Appendix 2.

### *Where should counts be made?*

- **Number of count stations:** Not applicable.
- **Location of count stations:** Not applicable.
- **Distance between counts stations:** Not applicable.

### *Data recording*

- **Datasheets:** Use a GPS to record bittern locations or draw locations on a laminated field map.
- **Data storage:** Enter data into the Department of Conservation's national bittern database (a Microsoft Excel spreadsheet; DOCDM-712082) or send records to the authors.
- **Analysis and reporting:** Population trend analyses are relatively specialised, so the advice of a statistician is useful before analysing the results. Trend analyses can be graphed (e.g. Fig. 4) and distributions can be shown on maps (e.g. Fig. 5).

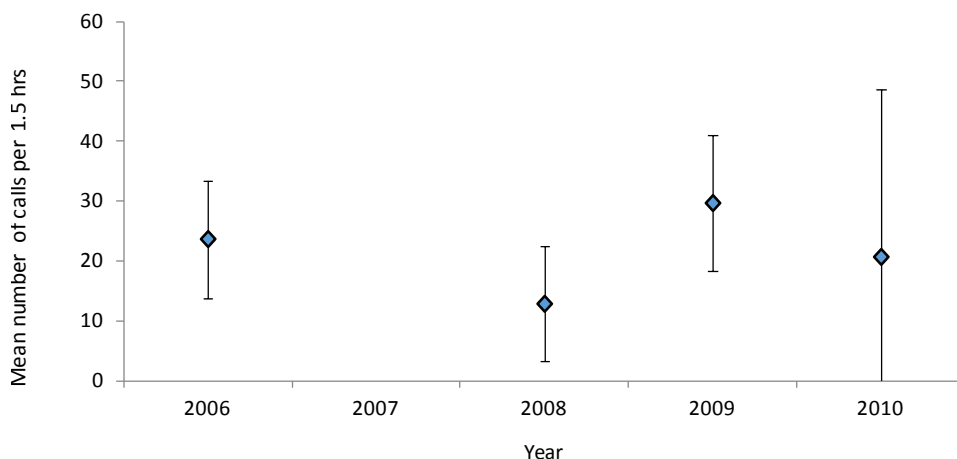


Figure 4. An example of graphical representation of Australasian bittern (*Botaurus poiciloptilus*) monitoring data from call counts at Whangamarino wetland, September–November 2006–2010. Data show the mean ( $\pm$  SE) number of passive call counts lasting 1.5 hours at 12 fixed listening stations repeated over 3 consecutive nights (E. Williams unpubl. data).

### 5.3 Estimate (index) of the number of booming males using triangulation in small wetlands (< 250 ha) (inventory and monitoring)

#### *About this protocol*

- **Measures:** Evening counts of booming males using observers who estimate the number and locations of individuals using simple triangulation (O'Donnell et al. 2013). Counts can be repeated in the same way annually to obtain data on annual changes in:
  - The mean number of birds detected
  - The number/location of bittern territories (e.g. Fig. 5)

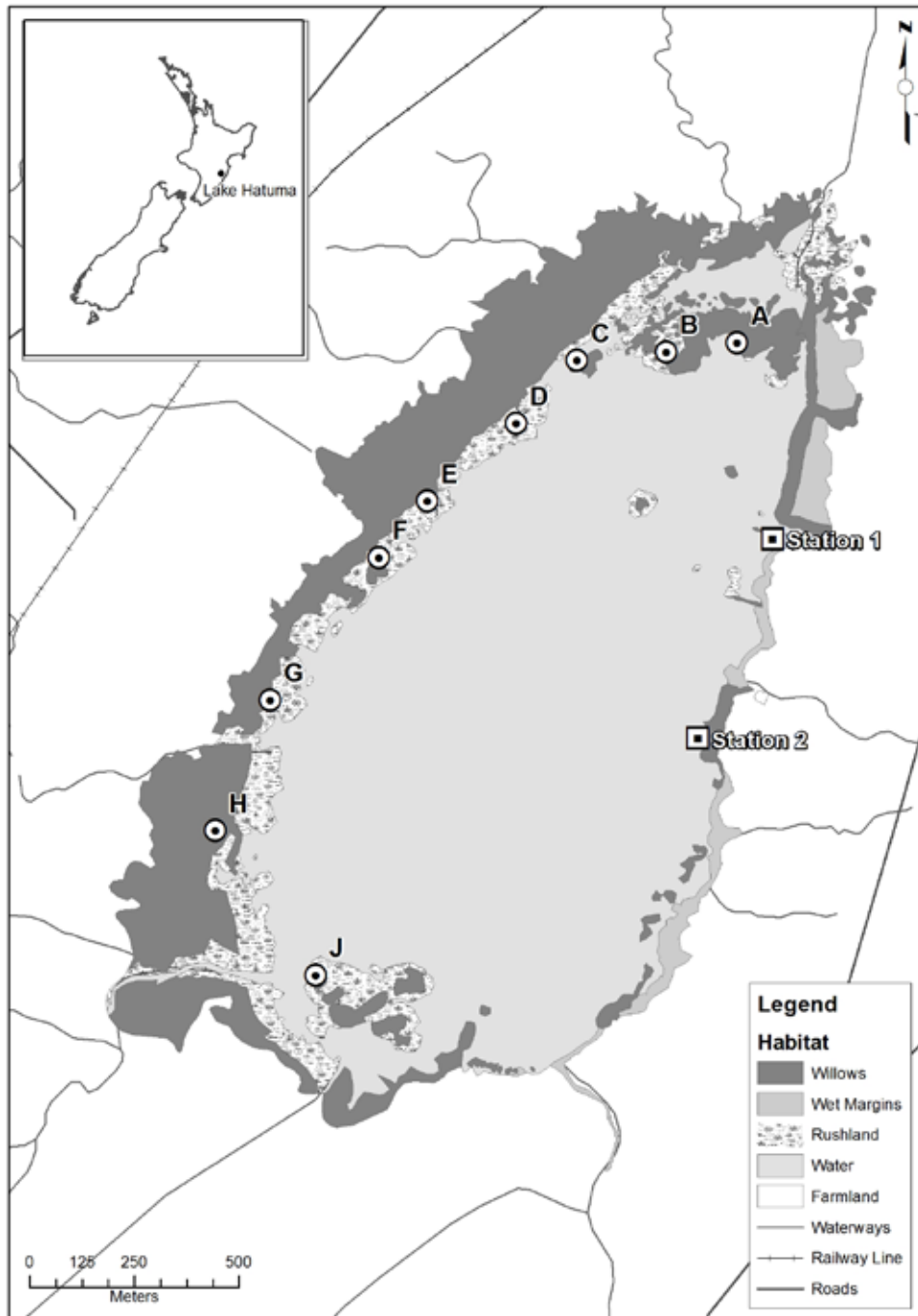


Figure 5. Example of mapping the distribution of Australasian bitterns (*Botaurus poiciloptilus*) at Lake Hatuma using triangulation from two fixed stations, June 2011. Letters represent the locations of booming bitterns (after O'Donnell et al. 2013).

- **Means of detection:** Acoustic triangulation involves repeatedly taking compass bearings in the direction of booming bitterns from a minimum of two different fixed listening stations around the wetland that are surveyed simultaneously by observers over a period of time (Lefebvre & Poulin 2003).
- **Suitability:** The method is particularly suitable for small (< 250 ha) lakes that have a narrow fringe of swamp vegetation, as there will be little confusion between the locations of individual birds if the method is followed. This method is not suitable for larger wetlands because the ability to differentiate between individuals becomes less precise and accurate as the number of individuals increases and the calls of distant bitterns overlap those of nearby bitterns. If observers get saturated by too many calling birds, or if there is insufficient time between calls to estimate the distance of calls reliably and distinguish individuals consistently, then results will be imprecise and variable.
- **Advantages:** A relatively quick method that gives immediate results. Does not require the use of kayaks.
- **Disadvantages:** Only suitable in a limited number of situations (small lakes with narrow fringes of vegetation) and usually dependent on being able to differentiate between individuals with sufficient precision to meet the study objectives (e.g. Fig. 5). Close approaches (see Protocol 5.2 above) appear to provide more accurate results than triangulation because the errors associated with taking compass bearings are minimised (O'Donnell et al. 2013). However, if kayaking is not possible, acoustic triangulation alone appears to provide a suitable index, although it probably underestimates the total number of birds booming. Formal triangulation, where intersections of bearings are formally mapped and error polygons calculated around estimated locations (White & Garrott 1986), is not recommended because previous attempts to do this indicated that error polygons were too large to be useful (C. O'Donnell & E. Williams, unpubl. data).
- **Differences between inventory and monitoring approaches:** If using this method for long-term monitoring, counts should be carried out at the same time and in the same weather conditions each year, and three repeats should be undertaken per year.

### *Field protocol*

- Use at least two accessible locations, c. 500 m apart to undertake counts. For example, at Lake Hatuma, all calling birds along the 2.4-km-long shoreline could be detected with two stations 500 m apart located in the middle of the lake shore (Fig. 5; O'Donnell et al. 2013).
- Count all males that boom during a 1-hour period at dusk.
- Undertake bearings simultaneously whenever birds are heard booming. Record the time of the last boom in each boom train, compass bearing (in degrees), estimated distance (m) and number of booms within a boom train. Individual booming males are distinguished using a combination of call direction and call characteristics (call volume and number of booms in sequence). Each time a bittern is heard, observers make a judgment as to whether the call was from a new bird, or one that had been previously heard within the count period. A call-sequence is recorded as a 'new' bird if the bearing of the new call is greater than ten degrees different from the bearing of any call heard previously; the bearing of the new call is within ten degrees of another call but falls into a different distance category; or the bearing of the new call is within ten degrees of another call, but consistently had a different number of booms within its boom sequence compared to the previous call.
- Immediately after the recording session each observer plots the location of each different bittern they heard on a map using the bearings (e.g. Appendix 4). Estimated locations are then compared to decide if observers were hearing the same birds or different birds. If the number of birds heard in one area is uncertain, observers should cross check boom characteristics such as time and number of booms in train to try to resolve this uncertainty. Be aware that the reliability of each observation will depend upon the observer's

location with respect to the bird. If an observer is closer to a bird or has a better angle to differentiate then weight their opinion higher. After all uncertainties have been discussed observers agree on the total number of birds and their locations, and these are plotted on a master map (e.g. Appendix 4).

#### *When should counts be made?*

- **Time of year:** September, October and early November, during the peak calling season for one-off inventory, BUT over a shorter period (last 2 weeks of September and all of October) during the highest calling period for monitoring (Fig. 2).
- **Time of day:** Centre surveys on 30 minutes before local sunset to 1 hour after local sunset during the peak evening calling period (Fig. 3B). Although the calling rate is often higher 2 hours before dawn (Fig. 3A), it is more practical for observers to work at dusk.
- **Number of visits:** 1+ nights for inventory; 3 nights for monitoring.
- **Frequency:** Annual for monitoring.
- **Survey conditions:** Conduct counts in calm, fine weather, and avoid listening during rain, strong wind and when there are other excessive noises (planes, trains, automobiles). Moon phase and visibility, and cloud cover must be recorded, as this helps when analysing and interpreting the results (E. Williams et al. unpubl. data). For criteria, see Appendix 2.

#### *Where should counts be made?*

- **Number of count stations:** At least two.
- **Location of count stations:** Position stations so that no shoreline is > 1 km from a count station.
- **Distance between count stations:** 500 m.

#### *Data recording*

- **Datasheets:** The standard field form that is used for monitoring can be used (Appendix 3; DOCDM-1298092).
- **Data storage:** Enter data into the Department of Conservation's national bittern database (a Microsoft Excel spreadsheet; DOCDM-712082) or send records to the authors.
- **Analysis and reporting:** Population trend analyses are relatively specialised, so the advice of a statistician is useful before analysing results. Trend analyses can be graphed (e.g. Fig. 4) and distributions can be shown on maps (e.g. Fig. 5). Note: It is not straightforward to interpret the results from triangulation alone because the ability to differentiate between individual birds varies and seems to depend upon the observer's location (see above).

## 5.4 Estimate (index) of the number of booming males using Acoustic Recording Devices (ARDs) (inventory & monitoring)

#### *About this protocol*

- **Measures:** Automated dawn counts of booming male call rates using recording devices as a one-off inventory or for longer term monitoring (E. Williams et al. unpubl. data). Counts can be repeated in the same way annually to obtain data on:
  - Changes in the mean calling rates of birds detected
  - Occupancy (site occupancy of a standard number of recording stations)
- **Means of detection:** Detects the calls of breeding males (booms) using automated recorders.



- **Suitability:** This method is particularly suitable for large wetlands where it is not possible to map the locations of bitterns or across a network of sites. In these situations, an index of call activity is used as a surrogate for estimating actual numbers (E. Williams et al. unpubl. data). ARDs can also be used for one-off inventories.
- **Advantages:** Allows remote inventory and monitoring without the need for observers to work at night or in remote and inaccessible wetlands.
- **Disadvantages:** Requires the allocation of time for processing sound files once recorders have been retrieved from the field and adherence to precise analytical protocols (see Appendix 5 for instructions).
- **Differences between inventory and monitoring approaches:** If using this method for long-term monitoring, counts should be made over a shorter standardised time period. Recording of dawn and dusk counts is useful for one-off inventories, but only dawn counts need to be recorded for monitoring.

### *Field protocol*

- Observers programme ARDs (see Appendix 1 for instructions), deploy the recorders in the field during the day and return at a later date to retrieve them.
- The recorders can be mounted on trees or posts using the brackets provided (Fig. 6).
- Recorders can be retrieved at a later date and data can then be downloaded back in the office or to a laptop in the field if they are being redeployed immediately. Data are recorded on memory (8-GB SD) cards and easily downloaded to a computer for later processing (see Appendix 5).

### *When should counts be made?*

- **Time of year:** September, October and early November, during the peak calling season for one-off inventory, BUT for a shorter period (last 2 weeks of September and all of October) during the highest calling period for monitoring (Fig. 2).



Figure 6. The deployment of an automatic bittern call recorder (Acoustic Recording Device; ARD) at Cascade wetland, South Westland. *Photo: Colin O'Donnell.*

- **Time of day:** Set recorders to capture data for 1.5 hours before local sunrise, as this is the period when bittern calling rates are generally highest (Fig. 3A). Sampling for one-off inventories can also include the second (lower) peak of activity 30 minutes before local sunset to 1 hour after local sunset (Fig. 3B).
- **Number of visits:** 1+ nights for survey; 3 nights for monitoring. It is possible to set recorders for longer periods (e.g. up to 20 days), which allows the selection of records from days with good weather and allows nights when it was raining or windy to be discarded when carrying out monitoring.
- **Frequency:** Annual for monitoring.
- **Survey conditions:** Conduct counts in calm, fine weather, and avoid listening during rain, strong wind and when there are other excessive noises (planes, trains, automobiles). Moon phase and visibility, and cloud cover must be recorded, as this helps when analysing and interpreting the results (E. Williams et al. unpubl. data). Weather conditions are collected remotely or using local weather stations after the monitoring period. For criteria, see Appendix 2.

### Where should counts be made?

- **Number of count stations:** The number of count stations required will depend on what level of population change the observer wishes to detect and over what time period. The more counts that are conducted, the higher the chance of detecting small changes in population indices—if small changes need to be detected over a few years, a large number of counts (hundreds) will be needed to make inferences about population trends. Therefore, we recommend a minimum of 40 count stations per year per study site for long-term monitoring. The collection of data from 40 stations should allow annual population changes in the order of  $\pm 10\%$  to be detected with 90% certainty if monitoring is conducted



Figure 7. An example of the layout of Australasian bittern (*Botaurus poiciloptilus*) monitoring stations (red dots) at Whangamarino wetland, Waikato. Grid squares are 1 km x 1 km.

over 5 years. Monitoring periods will need to be longer (10+ years) to improve predictions (E. Williams et al. unpubl. data).

- **Location of count stations:** For monitoring, the aim is to establish a number of count stations that represent typical habitat and are spread across the habitat to encompass the range of the population of interest. Thus, stations need to be spread widely across sites (e.g. Fig. 7).
- **Distance between counts stations:** 500 m or more (so that counts are relatively independent).

### Data recording

- **Datasheets:** The standard field form that is used for monitoring can be used (Appendix 3; DOCDM-1298092).
- **Data storage:** Enter data into the Department of Conservation's national bittern database (a Microsoft Excel spreadsheet; DOCDM-712082) or other Excel spreadsheet (for example, see Appendix 6), or send records to the authors.
- **Analysis and reporting:** To analyse results for monitoring, record calling rates from a randomly selected 15-minute period from each 2-h sample. The results from field recorders can be collated by listening to the recordings and noting the number of call sequences present in each sampling period. Bittern booms have distinctive sonographic signatures (Fig. 8), so the number of boom sequences can be recorded visually using sound analysis software. We currently use RavenLite or RavenPro software (www.birds.cornell.edu/; Appendix 5), which allow a sound file to be reviewed in 6-10 minutes (rather than 15-20 minutes to listen to the whole sound file manually in the absence of software). Once sound files have been reviewed, population trend analyses will need to be carried out. These are relatively specialised and so the advice of a statistician is useful before analysing the results. Generalised linear mixed models will usually be suitable and trend analyses can be graphed (e.g. Fig. 4).

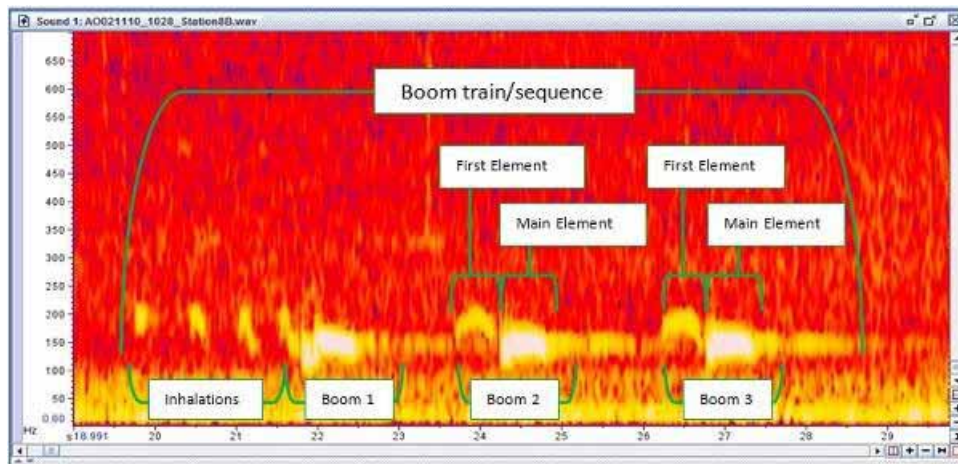


Figure 8. Spectrogram of an Australasian bittern (*Botaurus poiciloptilus*) boom sequence, showing the terms used to describe and identify bittern calls. Boom sequences often, but not always, consist of multiple booms that are preceded by a series of inhalations (or pumps). Each individual boom within a sequence is made up of a first element and main element. Terms used here are in keeping with descriptions provided for the vocalisations of the Eurasian bittern (*Botaurus stellaris*) (Gilbert et al. 1994). This spectrogram was produced using RavenPro (Bioacoustics Research Program 2011) with 0–30 seconds on the x-axis, 0–700 Hz on the y-axis and a sharpness setting of 2792 (E. Williams unpubl. thesis).

## 6. Decision guide to choosing protocols for a one-off survey versus long-term monitoring of Australasian bitterns

The best method and approach for inventory or monitoring of an Australasian bittern population will depend primarily on the objectives of the work and the level of detail required. As such, the first stage in any programme is to set clear objectives.

Most objectives revolve around three primary questions:

- Are bitterns present at a site?
- How many bittern are present?
- What are the population trends over time?

The four protocols described in section 5 can be used to inventory or monitor Australasian bitterns, depending on which question(s) need to be answered. The best choice of method depends not only on the questions being asked, but also on the size and shape of the wetland, and whether or not kayaks or other watercraft can be used (Table 1). Protocols for an inventory or long-term monitoring use the same basic methods but need to be applied in different ways. For example, to undertake long-term monitoring of calling rates, the sampling periods need to be shorter and the focus is more on standardising count times and conditions to allow comparability over time. By contrast, for a one-off survey that has been designed to determine presence, the focus is more on optimising sampling during the period of maximum booming (see Section 5).

We emphasise the need to follow the procedures outlined in the protocols as much as possible, particularly the guidelines on performing counts at optimal times and in the recommended conditions. The booming activity of Australasian bitterns varies markedly with season (Fig. 2) and time of night (Fig. 3), and a range of environmental variables (e.g. wind, rainfall, cloud cover, moon visibility) also affect activity (E. Williams et al. unpubl.). By surveying during optimal conditions, time and effort will not be wasted listening for calls when there is little chance of finding bitterns; and taking note of appropriate environmental variables when sampling will help in the interpretation of results, and enable analyses to be carried out that correct for factors that influence calling rate and detectability.

Table 1. Decision guide for choosing the optimal protocol for carrying out a one-off inventory or long-term monitoring of Australasian bitterns (*Botaurus poiciloptilus*) in New Zealand wetlands during September to November.

QUESTION	MEASURE	TECHNIQUE	STANDARD FIELD PROTOCOL	REPORTING STATISTICS	DOCUMENT SECTION/ REFERENCES
<b>One-off inventory:</b>					
1. Are bitterns present at a site?	Presence/absence during call inventories	1.1 Field observation	Evening counts of booming males using observers	<ul style="list-style-type: none"> <li>• Proportion of sites with booming bitterns</li> <li>• Time to first detection</li> </ul>	Section 5.1
		1.2 Acoustic Recording Devices (ARDs)	Dawn and dusk counts of booming males using recording devices	<ul style="list-style-type: none"> <li>• Proportion of sites with booming bitterns</li> <li>• Time to first detection</li> </ul>	Section 5.4
2. How many bitterns are present?	Estimate (index) of the number of booming males	2.1 Small wetlands <250 ha—close approaches	Evening counts of booming males using observers on shore or in kayaks	<ul style="list-style-type: none"> <li>• Mean number of birds recorded</li> <li>• Locations of birds</li> </ul>	Section 5.2 O'Donnell et al. 2013
		2.2 Small wetlands <250 ha—triangulation	Evening counts of booming males using triangulation from fixed stations	<ul style="list-style-type: none"> <li>• Mean number of birds recorded</li> <li>• Locations of birds</li> </ul>	Section 5.3 O'Donnell et al. 2013
		2.3 Large wetlands—calling rate per 15-minute sample using ARDs	Dawn counts of booming male call rates using recording devices	<ul style="list-style-type: none"> <li>• Estimate of number of birds derived from call rate counts</li> </ul>	Section 5.4 Williams et al. unpubl. data
<b>Long-term monitoring:</b>					
3. What are the population trends over time?	Estimate (index) of the number of booming males	3.1 Small wetlands <250 ha—close approaches	Evening counts of booming males using observers on shore or in kayaks repeated annually	<ul style="list-style-type: none"> <li>• Change in mean number of birds and their locations</li> </ul>	Section 5.2 O'Donnell et al. 2013
		3.2 Small wetlands <250 ha triangulation	Evening counts of booming males using triangulation from fixed stations repeated annually	<ul style="list-style-type: none"> <li>• Change in mean number of birds and their locations</li> </ul>	Section 5.3 O'Donnell et al. in press
		3.3 Large wetlands—calling rate per 15-minute sample using ARDs	Dawn counts of booming male call rates using recording devices repeated annually	<ul style="list-style-type: none"> <li>• Change in call rate over time</li> </ul>	Section 5.4 Williams et al. unpubl. data

## 7. Acknowledgements

The development of these field protocols involved a great deal of assistance in the field trialling a range of techniques. Particular thanks go to John and Gail Cheyne, Elise Verschoor, Lynette Plenderleith, Matt Brady, Jono More, Campbell Ebert, and Bernie Gunn for assisting with field work; Richard Earl for drawing Figure 5; Peter Langlands for permission to reproduce Figure 1; Doug Armstrong, Terry Greene, Mary Beech, Amanda Todd and Hugh A. Robertson for valuable advice and critical comments on draft protocols; and Lynette Clelland for producing the document. Special thanks to Stu Cockburn for developing and supplying automatic bird recorders. This project was partly funded by the Department of Conservation Arawai Kākāriki wetland restoration fund, and the Science and Capability Group, Department of Conservation.

## 8. References

- Adamo, M.C.; Puglisi, L.; Baldaccini, N.E. 2004: Factors affecting bittern *Botaurus stellaris* distribution in a Mediterranean wetland. *Bird Conservation International* 14: 153-164.
- Ausseil, A.-G.E.; Chadderton, W.L.; Gerbeaux, P.; Stephens, R.T.; Leathwick, J.R. 2011: Applying systematic conservation planning principles to palustrine and inland saline wetlands of New Zealand. *Freshwater Biology* 56: 142-161.
- BirdLife International 2013: Species factsheet: *Botaurus poiciloptilus*. [www.birdlife.org](http://www.birdlife.org) (accessed 18 September 2013).
- Buchanan, K.L. 2009: Wetland conservation in the Murray-Darling Basin—is it going down the drain? *Emu* 109: i-iv.
- Buller, W.R.B. 1892: Further notes on the birds of New Zealand. *Transactions of the New Zealand Institute* 25: 63-87.
- Clarke, R.H.; Oliver, D.L.; Boulton, R.L.; Clarke, M.F. 2003: Assessing programs for monitoring threatened species—a tale of three honeyeaters (Meliphagidae). *Wildlife Research* 30: 427-435.
- Conway, C.J. 2009: Standardized North American Marsh Bird Monitoring Protocols. *Wildlife Research Report #2009-02*. U.S. Geological Survey, Arizona Cooperative Fish and Wildlife Research Unit, Tucson, AZ.
- Drew, S.H. 1896: Natural history notes. *Transactions of the New Zealand Institute* 29: 284.
- Gilbert, G.; McGregor, P.; Tyler, G. 1994: Vocal individuality as a census tool: practical considerations illustrated by a study of two rare species. *Journal of Field Ornithology* 65: 335-348.
- Hamilton, A. 1885: A list of the native birds of the Petane District, Hawke's Bay, with notes and observations. *Transactions of the New Zealand Institute* 18: 123-128.
- Heather, B.; Robertson, H. 2000: The field guide to the birds of New Zealand. Revised ed. Viking, Auckland. 440 p.
- Kéry, M.; Schmidt, B. 2008: Imperfect detection and its consequences for monitoring for conservation. *Community Ecology* 9: 207-216.
- Kushlan, J.A. 2007: Conserving herons, a conservation action plan for the herons of the world. Heron Specialist Group and Station Biologique de la Tour du Valat, Arles, France. 93 p.
- Kushlan, J.; Hancock, J. 2005: The herons. Oxford University Press, New York. 456 p.
- Lefebvre, G.; Poulin, B. 2003: Accuracy of bittern location by acoustic triangulation. *Journal of Field Ornithology* 74: 305-311.
- Miskelly, C.M.; Dowding, J.E.; Elliot, G.P.; Hitchmough, R.A.; Powlesland, R.G.; Robertson, H.A.; Sagar, P.M.; Scofield, R.P.; Taylor, G.A. 2008: Conservation status of New Zealand birds, 2008. *Notornis* 55: 117-135.
- Myers, S.C.; Park, G.N.; Overmars, F.B. (comps) 1987: A guidebook for the rapid ecological survey of natural areas. *New Zealand Biological Resources Centre Publication No. 6*. Department of Conservation, Wellington. 113 p.
- O'Donnell, C.F.J. 2011: Breeding of the Australasian bittern (*Botaurus poiciloptilus*) in New Zealand. *Emu* 111: 197-201.
- O'Donnell, C.F.J.; Williams, E.; Cheyne, J.C. 2013: Close approaches and acoustic triangulation: techniques for mapping the distribution of booming Australasian bittern on small wetlands. *Notornis* 60: 279-284.

- Potts, T.H. 1869: On the birds of New Zealand. *Transactions of the New Zealand Institute* 2: 40-77.
- Poulin, B; Lefebvre, G. 2003a: Optimal sampling of booming Bitterns *Botaurus stellaris*. *Ornis Fennica* 80: 11-20.
- Poulin, B; Lefebvre, G. 2003b: Variation in booming among Great Bitterns *Botaurus stellaris* in the Camargue, France. *Ardea* 91: 177-181.
- Poulin, B; Lefebvre, G.; Allard, S.; Mathevet, R. 2009: Reed harvest and summer drawdown enhance bittern habitat in the Camargue. *Biological Conservation* 142: 689-695.
- Thompson, W.L. 2004: Sampling rare or elusive species: concepts, designs and techniques for estimating population parameters. Island Press, Washington, DC. 429 p.
- van Turnhout, C.A.M.; Hagemeyer, E.J.M.; Foppen, R.P.B. 2010: Long-term population developments in typical marshland birds in The Netherlands. *Ardea* 98: 283-300.
- White, G.C.; Garrott, R.A. 1986: Effects of biotelemetry triangulation error on detecting habitat selection. *Journal of Wildlife Management* 50: 509-513.
- White, G.; Purps, J.; Alsbury, S. 2006: The Bittern in Europe: a guide to species and habitat management. The Royal Society for the Protection of Birds, Sandy. 186 p.

# Appendix 1

## Instructions for using automatic Acoustic Recording Devices (ARDs) (Ver B.2) for monitoring Australasian bitterns (*Botaurus poiciloptilus*) (adapted from Acoustic Recorder Instructions Ver B.2, Stuart Cockburn, Department of Conservation, Wellington)

### A1.1 Equipment

1-20 × automatic Acoustic Recording Device (Ver B.2) (available from the DOC Electronics Laboratory, Wellington, [electronics@doc.govt.nz](mailto:electronics@doc.govt.nz))

1 × 8-GB SD card per recording unit

4 × AA rechargeable batteries per recording unit

### A1.2 How the recorder works

The recorder will automatically wake up at the preset ‘Start Time’ every day and will start to record continuously for the preset ‘Duration Time’. The rest of the time the recorder is asleep and draws very little power.

#### *The sound files*

The recordings are stored on the memory card as single channel .wav files in a folder called ‘survey’.

Sound files are stored as separate files of 15 minutes’ duration. Each file is named with the current date and time (6 digits + 6 digits separated by underscore), e.g. a sound file recorded on the 26/02/10 at 9:24:06 PM will be named 260210\_212406.wav. The files are also date stamped in the normal way so that the time/date created will appear in File Explorer.

The sound files can be played back on a computer or analysed using sound analysis software.

#### *Batteries*

The recorder uses four AA batteries, which can be either standard alkaline or rechargeable NiMH (recommended). High-capacity NiMH (2500+ mAh) batteries should last for over 100 hours of recording at the LOW sampling rate. This could equate to 10 days of 10 hours or 50 days of 2 hours—the time between recordings has little impact on the battery capacity. Batteries can be expected to last for 25 days using sunrise and sunset bittern settings (4 hours per day) provided that an 8-GB memory card is used.

Battery life is dependent on the sampling rate, so only use the HIGH rate for species that require it. Using high sampling rate, the battery life reduces to about 50 hours. Therefore, if you are only targeting bitterns, set the sampling rate to LOW (so that high frequency sounds are not recorded), but if you wish to detect multiple species, e.g. bittern, marsh crake and fernbird, set the sampling rate to HIGH.

Note:

- The only way to stop the recorder from running each night is to remove the batteries.
- NiMH batteries will give much longer life and performance if they are always kept, used and charged in sets.



### A1.3 Setting up the recorder

To open the recorder, remove the aluminium (or plastic) tube cover by gently twisting until the locators disengage and then pulling on the cover. Try to ease the tube off rather than allowing it to pull away and bash the recorder electronics inside. Also take care when replacing the cover to ensure that the SD card is not dislodged from its holder.

It is easiest to use your hands to lever the cover off, as shown in Fig. A1.1.



Figure A1.1. Removing the cover of the recorder.

Once the recorder is open, you can see the display screen, control buttons and SD card slot on one side, and the battery holders on the other (Fig. A1.2). Try to avoid getting moisture or debris inside the recorder—use of silicon bead packets will help with this; they can be obtained from the conservation electronics team at the Department of Conservation ([electronics@doc.govt.nz](mailto:electronics@doc.govt.nz)).

#### *Adjusting the settings*

There are four yellow buttons on the recorder to navigate through the menu (Fig. A1.2).

The On/Page key (the left-hand button) wakes up the recorder and cycles through the pages in the menu.

The Plus and Minus keys (+/-) (the two right-hand buttons) modify the settings on the page.

The Shift key (→) (middle button) selects which value to modify.

#### *The settings*

Press the 'On/Page' key to start the display. After a few seconds, the 'time' page will appear. You can then use the On/Page key to scroll through the various settings pages as outlined below:

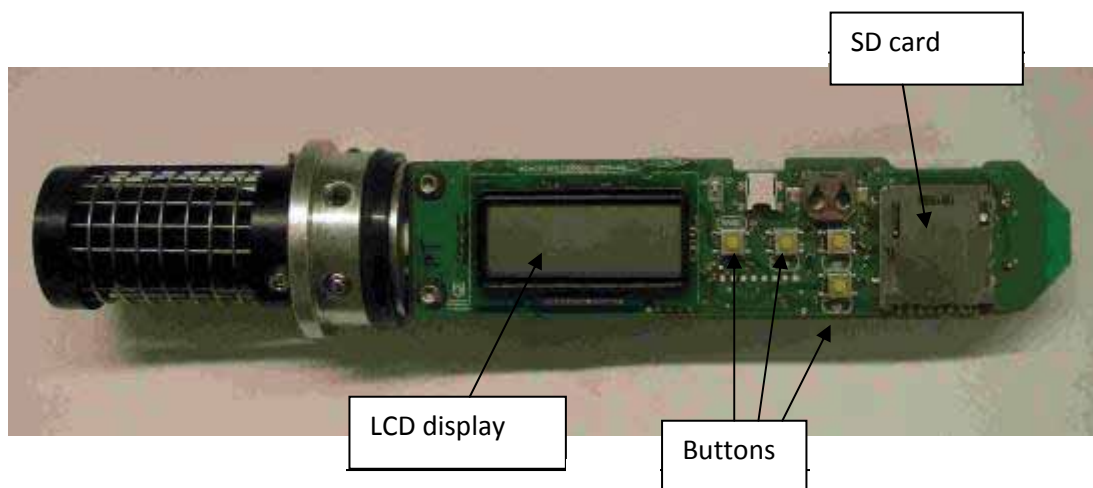


Figure A1.2. View of the inside of a recorder.

- Time:** The current time, in 24-hour format.
- Date:** The current date, including the year, in DD/MM/YY format.
- Start1+Span:** The first start time for recording. The top line is the start time in 24-hour format and the bottom line is the duration. If the duration is set to 00:00 then recording at this time is disabled. For bitterns, set the timer to start 1 hour 30 minutes before sunrise and set the duration as 02:00.
- Start2+Span:** As above, but for a second recording period. For bitterns, set the timer to start 30 minutes before sunset and set the duration as 02:00.
- Alternatively,** if the recorders will only be in the field for < 5 days and storage space for the sound files is not limiting, there is the option of setting 'Start1' and 'Span' to 05:00 and 23:55, respectively. 'Span' on the 'Start2' page is then set to 00:00 (effectively turning the second timer off). This will produce 24-hour recordings, which can be stored for analysis should a software package become available in the near future.
- Sampling:** The audio sampling rate of the recorder. The options are LOW or HIGH. For bitterns, set the timer to LOW.
- Card:** Checks the card (function and free space) or reformats the card.

On each page the Shift key (→; middle button) can be used to select a value (the value flashes) and the Plus/Minus keys can be used to modify it. For example, on the time page use the Shift key to select either hours or minutes and then use Plus/Minus to change the values.

After about 20 seconds of no activity from the user, the display will power down. If you have not finished adjusting the settings, you may have to wake it up again and continue scrolling through the menu.

#### A1.4 Deployment of units for bittern monitoring

The recorders can be mounted on trees or posts (the smaller the better, as large trees can cause unwanted blocking of the sound) using the brackets provided (Fig. A1.3). Each bracket can be attached to a tree using cable ties, screws, string, duct tape or whatever else is available. The recorder then sits in the bracket and is held in place by cable ties. We recommend the use of

reusable ties, such as cable ties (e.g. <http://nz.element14.com/>, part number 1230926) or garden ties (e.g. MCGREGORS twist ties, [www.mitre10.co.nz/](http://www.mitre10.co.nz/), part number 153617).

For bittern monitoring, attach units to canes/poles at a height of 1.5 m. These should then be placed in the wetland at stations 500 m apart.

Surveys should only be conducted in fair weather conditions (avoid rain or strong wind), and avoid deploying units near potential disturbances such as trains, planes and automobiles.



Figure A1.3. Mounting the recorder on a tree.

#### A1.5 Problems and queries?

For any electronic problems or questions, contact the conservation electronics team at the Department of Conservation ([electronics@doc.govt.nz](mailto:electronics@doc.govt.nz)).

For bittern monitoring related queries, contact Emma Williams ([bittern.wills@yahoo.com](mailto:bittern.wills@yahoo.com)) or Colin O'Donnell ([codonnell@doc.govt.nz](mailto:codonnell@doc.govt.nz)).

# Appendix 2

## Criteria for recording climate variables during bittern counts

### A2.1 Noise

#### *Low—Light background noises:*

- Short/loud noises are brief and rare, e.g. banging doors, occasional car or other birds calling.
- Continuous noises are quiet and not distracting, e.g. light drone of vehicles on motorway and/or train.
- Overall, the observer does not feel distracted or have problems concentrating. Feels that no calls are being missed, even if the calling bird is very far away. Both short/loud noises and continuous noises are easy to ignore.

#### *Medium—Some background noises:*

- Short/loud noises occur regularly and last longer than 30 seconds each time.
- Continuous noises are constant and loud enough that calls made far away may be missed.
- Overall, the observer feels that some quiet calls may be being missed and may have trouble concentrating, e.g. tormented by the occasional mosquito.

#### *High—Lots of background noises:*

- Short/loud noises are regular and very distracting, e.g. geese/other waterfowl constantly gagging, people talking or shouting.
- Continuous noises are loud and close by, e.g. running water, highway, annoying mosquitoes.
- Overall, the observer feels continuously distracted and frustrated by noises. Some calls may be missed, even if the bird is a medium distance away or close by.

### A2.2 Wind strength

**Calm**—May be able to feel a light breeze on the face, but branches and leaves are largely still or only move slightly.

**Light**—An occasional or constant breeze, but only light branches and leaves are affected. Leaves may rustle slightly but the noise is not distracting.

**Moderate**—Small branches move and sway. Leaves rustle but the wind is less than 10 knots. There is a constant wind.

**Strong**—Gusty, with large branches and leaves swaying. Rain is coming at a 45° or lower angle.

### A2.3 Moon visibility

1—Not visible, completely covered by clouds

2—Visible, completely covered and likely to stay that way for the majority of the survey

3—Visible, partially covered and likely to stay that way for the majority of the survey

4—Visible, no cloud

**D/K**—Don't know; cannot see the moon because it has not risen or a physical feature is in the way, e.g. trees, hill or building

**N/R**—Not recorded

# Appendix 3

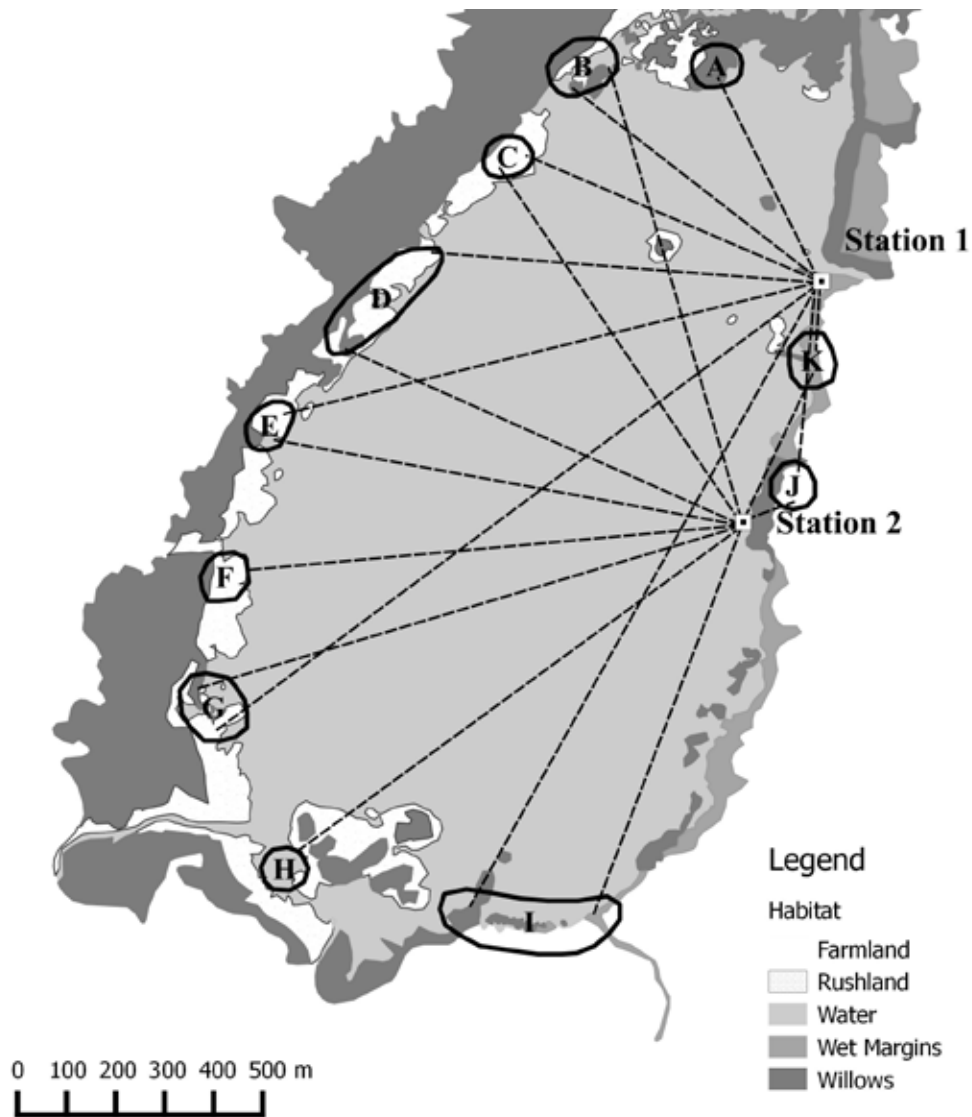
## Standard field sheet for recording bittern counts from general or triangulation surveys

(Available at DOCDM-1298092 or codonnell@doc.govt.nz)

SWAMP BIRD FIELD SHEET			Site: <b>Whangamarino</b>		
Date:	<b>9/10/2009</b>	Observer: <b>Emma Williams</b>	Station No: <b>Bitt 1</b>		
Time Start:	<b>18:54</b>	Time Finish: <b>19:09</b>	Sunrise/sunset		
Grid Easting:	<b>1793353</b>	Grid Northing: <b>5864536</b>			
WEATHER Temp: Cold / <b>Cool</b> / Warm		Wind Dir. (e.g. <b>SW</b> )			
Wind Strength: Calm / <b>Light</b> / Moderate / Strong - gusty					
Other (e.g. rain) <b>No</b>		% Cloud Cove <b>85</b>			
Playback used? <b>No</b>					
Forward orientation of count (degrees)		<b>46 degrees</b>			
Diagram of location of calls (Estimate the number of different individuals calling from a station through the count period)					
NOTES (disturbances: cars, planes etc): <b>2 x Cars</b> <b>Cows moving</b> <b>Low</b> / Medium / High					
SPECIES: <b>Bittern</b> / <del>Marsh Crake</del> / <del>Spotless Crake</del> / <del>Banded Rail</del> / <del>Fernbird</del> / <del>Moropork</del>					
TOTAL NUMBER OF BIRDS		<b>4</b>			
CALL NO.	TIME	Est. DISTANCE TO CALL(m)	No. CALLS	Individual No.	COMMENTS/other species and times?
1	<b>18:54:21</b>	<b>Far</b>	<b>3</b>	<b>A</b>	<b>135 degrees</b>
2	<b>18:55:25</b>	<b>Med</b>	<b>5</b>	<b>B</b>	<b>312 degrees</b>
3	<b>18:56:35</b>	<b>Med</b>	<b>4</b>	<b>B</b>	} <b>Calls overlapping. Bird C at bearing 10 degrees</b>
4	<b>18:56:35</b>	<b>Far</b>	<b>4</b>	<b>C</b>	
5	<b>18:58:36</b>	<b>Med</b>	<b>5</b>	<b>B</b>	
6	<b>19:00:16</b>	<b>Med</b>	<b>5</b>	<b>B</b>	
7	<b>19:00:38</b>	<b>Med</b>	<b>3</b>	<b>D</b>	<b>133 degrees</b>
8	<b>19:02:25</b>	<b>Med</b>	<b>4</b>	<b>B</b>	
9	<b>19:04:41</b>	<b>Med</b>	<b>3</b>	<b>A</b>	
10	<b>19:05:58</b>	<b>Med</b>	<b>5</b>	<b>B</b>	
11	<b>19:06:21</b>	<b>Med</b>	<b>5</b>	<b>B</b>	
12					
13					
14					
15					
16					
17					
18					
19					
20					
21					
22					
23					
24					
25					

# Appendix 4

## Triangulation example



In this example the observers needed to address three areas of uncertainty:

1. Was bird A actually one or two birds? Station 2 only got one bird in this location but Station 1 got two. Station 1 is in the best position to distinguish between calls from this area and therefore the observers (correctly) concluded that there were two birds in the area.
2. Was there one or two birds in the southeastern corner of the lake? Here observers decided there was one bird (Bird I), as neither observer was in a position to get a good angle and both observers had recorded similar call characteristics (e.g. times of calls, number and frequency of booms). They concluded (correctly) that the calls they had both heard were from the same bird and the variability in their placements is most likely bearing error.
3. Were birds G and H one or two birds? Station 1 only recorded birds from one general location (G) but Station 2 had a greater ability to distinguish between these birds compared with Station 1 and therefore they concluded (correctly) that these were two separate birds.

# Appendix 5

## Detecting the calls of Australasian bitterns (*Botaurus poiciloptilus*) by visually analysing sound files (E. Williams unpubl. thesis)

### A5.1 Choosing a software package

The mono files that are recorded using the Department of Conservation's Acoustic Recording Devices (ARDs) can be visually processed using the free software RavenLite or RavenPro 1.4 (the latter is recommended but is only available for free on a 30-day trial). Depending upon the number of boom sequences recorded and the experience of the analyser, you can reasonably expect a 15-minute file to take an average of 6 minutes to process. The choice of which software package to use will depend upon the volume of sound files needing to be processed and what information the processor requires from the files. In general, the following recommendations can be made:

- **RavenLite** is recommended if you are detecting bittern calls to determine basic presence/absence or require a simple count of the number of calls for only a few files. It is free but you will need to register online to use the software.
- **RavenPro 1.4** is recommended if you need to process a large number of files, as it is much easier to use and has additional features, such as the ability to save a window preset and to process multiple files at the same time. It also allows you to obtain additional attributes easily, such as the energy (dB) or peak power (dB) of a call. Unfortunately, however, it is not free—refer to the website for more details on cost. Note that permission can be sought to trial the software for 30 days and New Zealand is one of the countries listed to qualify for a discount.

### A5.2 Downloading the software

Raven software (both RavenLite and RavenPro 1.4) can be downloaded from the Cornell Lab of Ornithology at the following web address:

[www.birds.cornell.edu/brp/raven/RavenVersions.html](http://www.birds.cornell.edu/brp/raven/RavenVersions.html)

First download the software and then follow the prompts on the website to get the relevant product licence. A licence is required to access the full functionality of the software regardless of whether it is free or not. As part of this process, you are likely to have to register your name and contact details with Cornell. Refer to the website to complete this process.

For RavenPro 1.4 you should download the 63.0M version for Windows, the 30.9M version for Mac or the 28.9M version for Linux.

### A5.3 Opening the sound files (using both RavenLite and RavenPro)

Once the software is installed on your computer and your licence has been verified, you can start to analyse your files. Sound files can be opened in several ways, including:

- **Traditional method:** Click on File > Open Sound Files and browse through your hard drive until you find the file of interest. Click on your file and then select 'Open'.
- **Drag and drop method:** On your computer, separately open the folder containing your sound file. Now left click on the sound file of interest, and then drag and drop the file into Raven by holding down your left mouse button.

To get you started, we recommend you open the example file provided (ST0032.wav). If this file has not been provided please contact Emma Williams ([bittern.wills@yahoo.com](mailto:bittern.wills@yahoo.com)) and ask for a copy to be sent to you. Regardless of which of the above methods you used to open your file, your screen should now look something like the screenshot in Fig. A5.1.

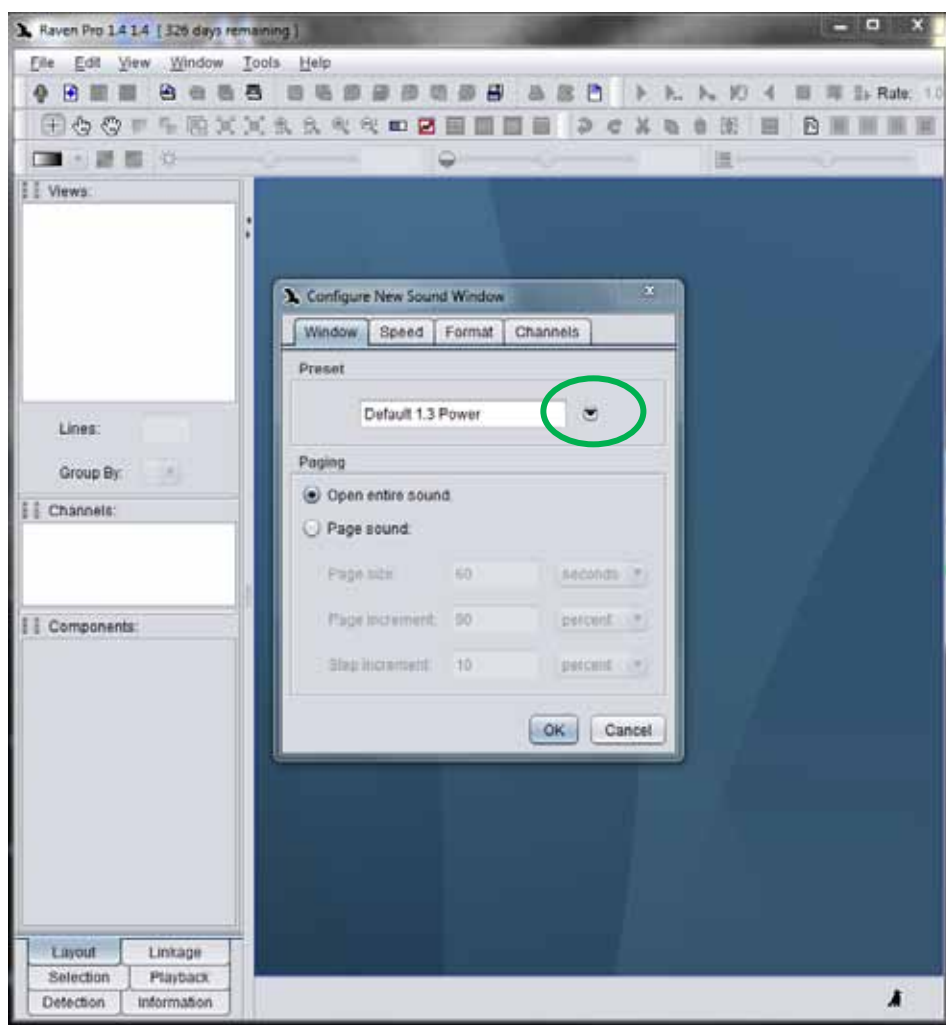


Figure A5.1. View of starting screen for analysing bittern calls

If you already have a preset window established for bitterns, follow instructions (a). If this is your first time processing soundfiles for bitterns then you will not have any presets established and need to follow instructions (b).

- (a) Selecting a preset window. Click on the downward arrow next to the preset box (Green circle, Fig. A5.1). This will produce a dropdown list of available presets. If 'bittern' is on the list, click on it and then click on 'OK' (Fig. A5.2). Your screen will now look like Fig. A5.3, and you are now ready to detect bitterns and can skip to instructions 'Detecting bittern booms' (A5.4).
- (b) Creating preset window settings to detect bitterns. With your screen looking like that in Fig. A5.1, Click on 'OK'. Now you should have a screen that looks like the screenshot in Fig. A5.4. Here, you are looking at two views (shown by green arrows): the waveform (the upper window with blue lines on a white background) and the spectrogram (the lower window, which appears grey and fuzzy). To prepare your view so that you have the best chance of seeing bittern calls, follow these steps:
  1. Turn off the waveform view. To do this, remove the tick that is in the box next to waveform 1 on the left-hand side of your screen (circled in green in Fig. A5.4). Now your screen should look more like the screenshot in Fig. A5.5.
  2. Maximise the window by clicking on the button shown by the blue arrow (Fig. A5.5) so that your screen looks like Fig. A5.6.

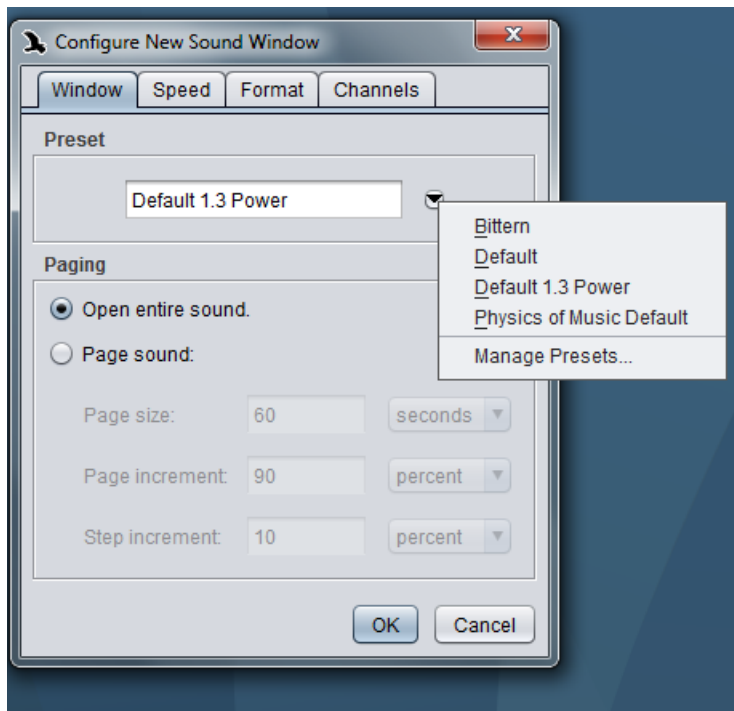


Figure A5.2. Dropdown list of preset windows.

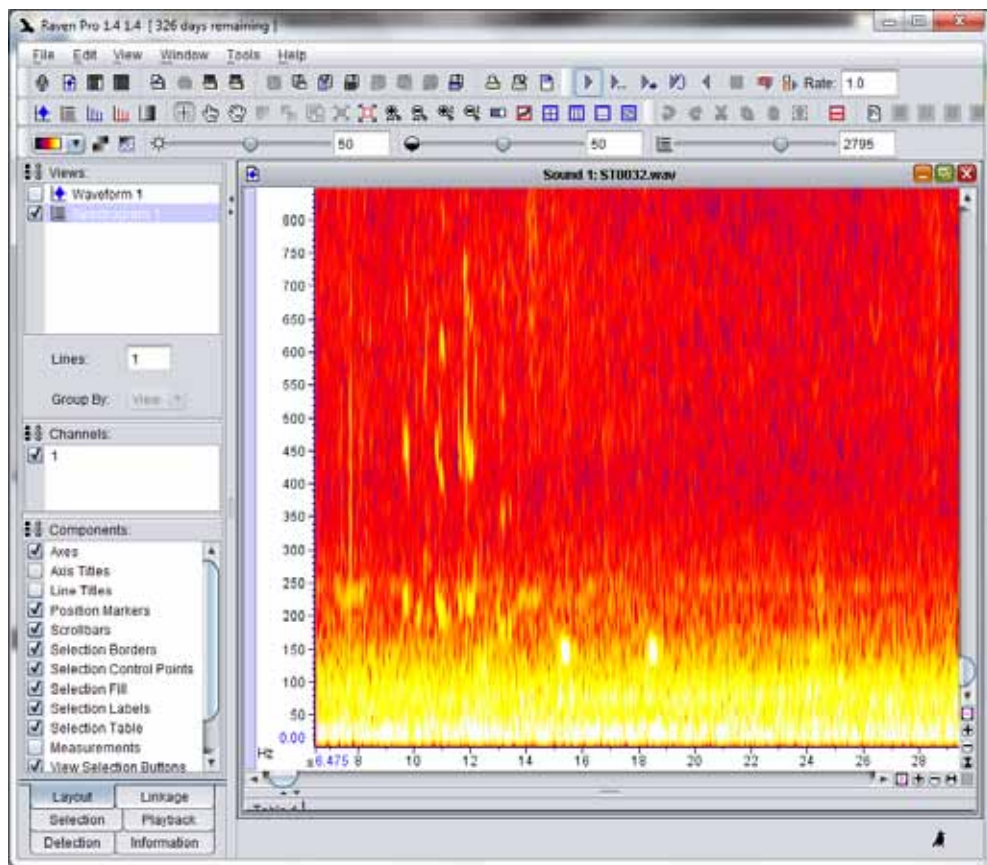


Figure A5.3. View of an open sound file in RavenPro 1.4.



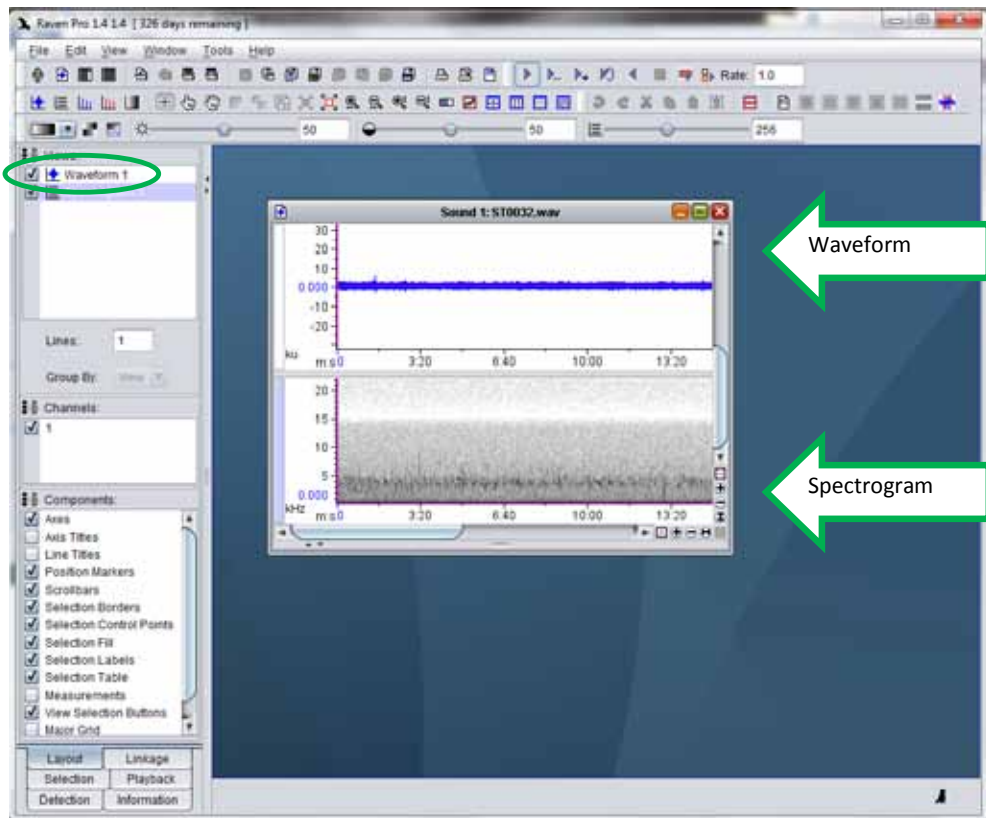


Figure A5.4. Creating a preset screen to detect bitterns.

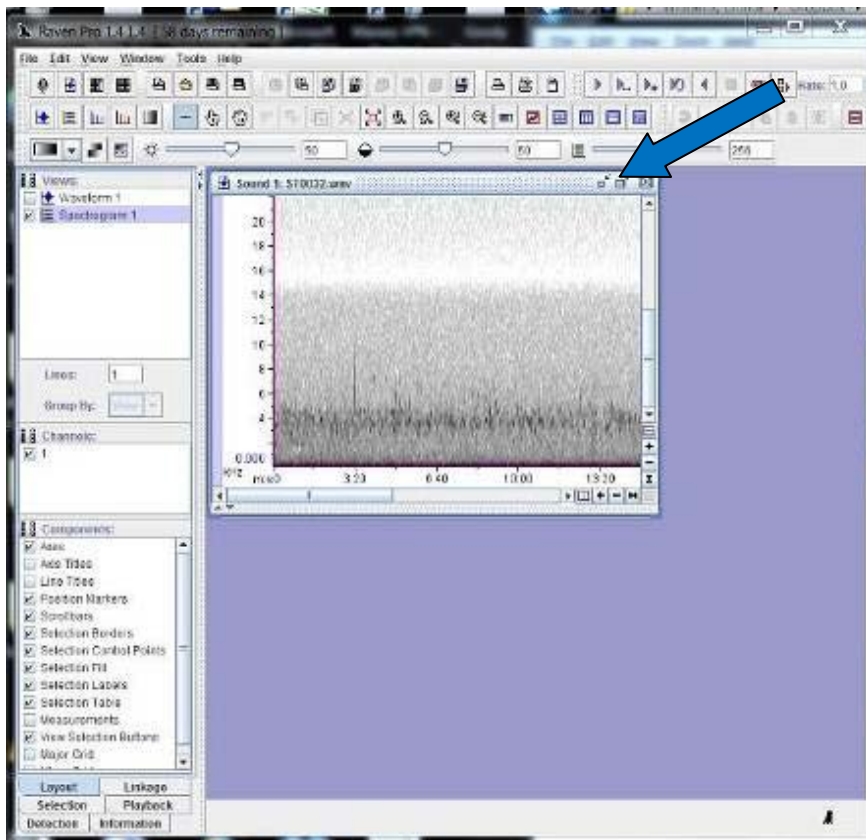


Figure A5.5. View of an open sound file in RavenPro 1.4 only showing the spectrogram.

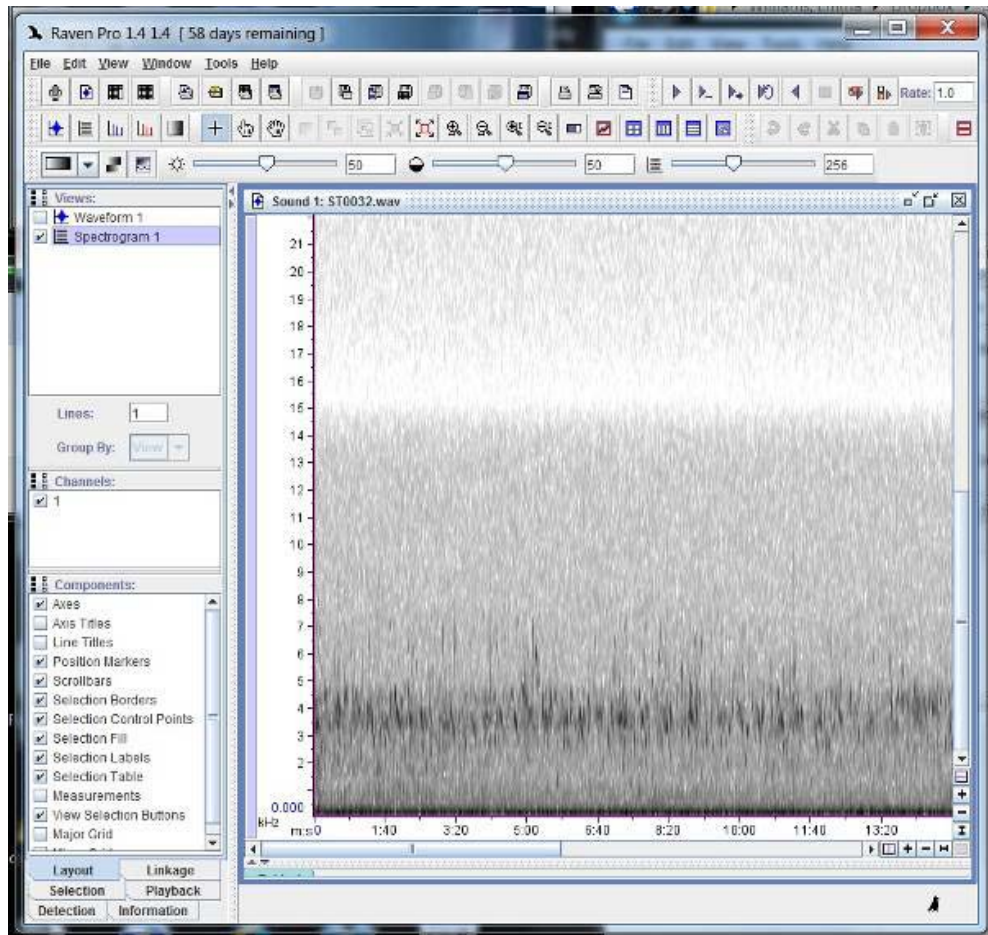


Figure A5.6. View once the waveform has been turned off and screen size maximised.

3. Now set the view so that you are looking at < 900 Hz (y-axis) and 0–30 seconds (x-axis). To do this, left-click on the spectrogram and, while holding your left mouse button down, draw a box over the area you wish to zoom to in the lower left of the spectrogram. The screen should now look like something like Fig. A5.7.
4. You can now zoom into your selection by clicking on the button marked by the green circle in Fig. A5.7, to give you something that looks like the screenshot in Fig. A5.8 (which looks horrific!). If you are not happy with your selection, you can reverse it by clicking on the ‘expand’ button, which is found to the right of the zoom button (see Fig. A5.9), and try again.
5. Once you have zoomed to an area that you are happy with you will need to alter the sharpness (see Fig. A5.10). A value of around 2792 is recommended.
6. Next, change the colour of the spectrogram using the colour map drop box (circled in blue on Fig. A5.11). The option ‘hot’ is useful for seeing bitterns, but the choice is really personal preference. Now your screen should look like Fig. A5.12.
7. The bittern boom sequences should now be visible (circled in blue in Fig. A5.13). Note: There are three booms within this single sequence; the last two are quite obvious, but if you look closely and listen with good quality headphones you will discover that there is also a poor boom at the beginning of the sequence (shown by the blue arrow).
8. Scroll through the file looking for any bittern calls. To do this, left-click anywhere on the scroll bar (area marked with a green square in Fig. A5.12). This will move your screen along at a rate of 15 seconds per click.

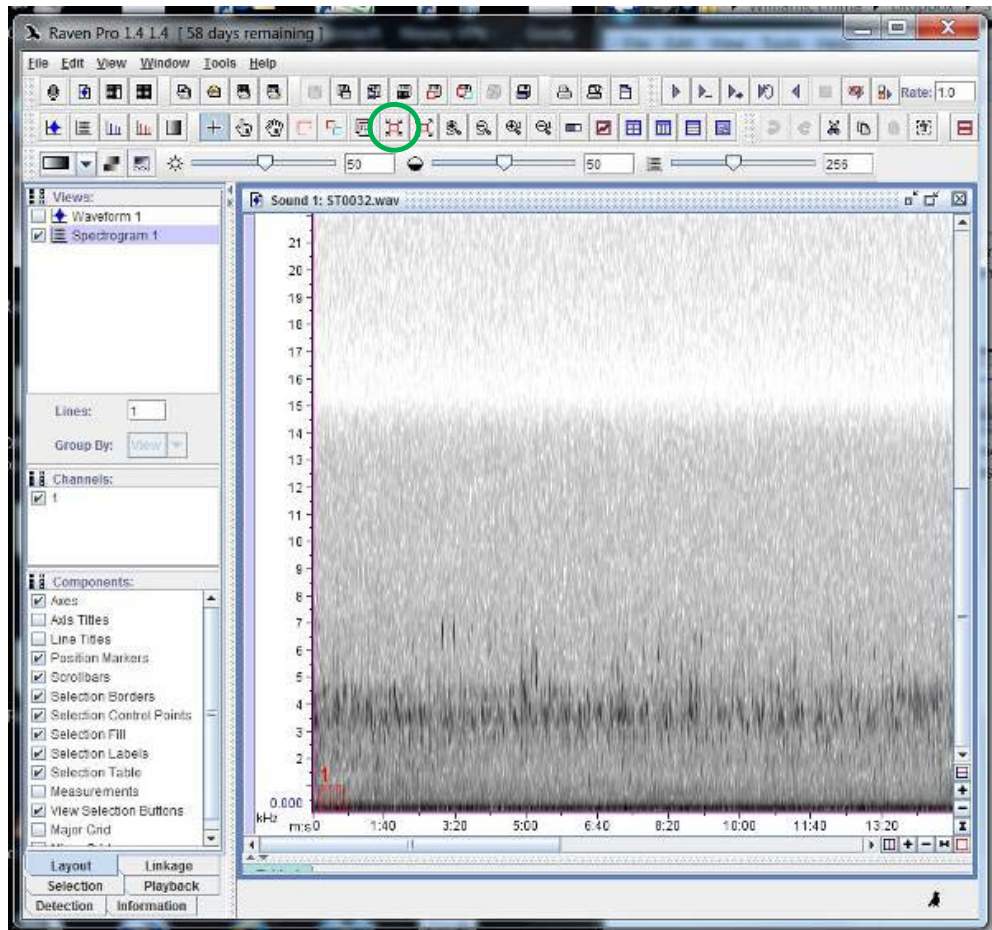


Figure A5.7. Drawing a box over the area you wish to zoom to in the lower left of the spectrogram.

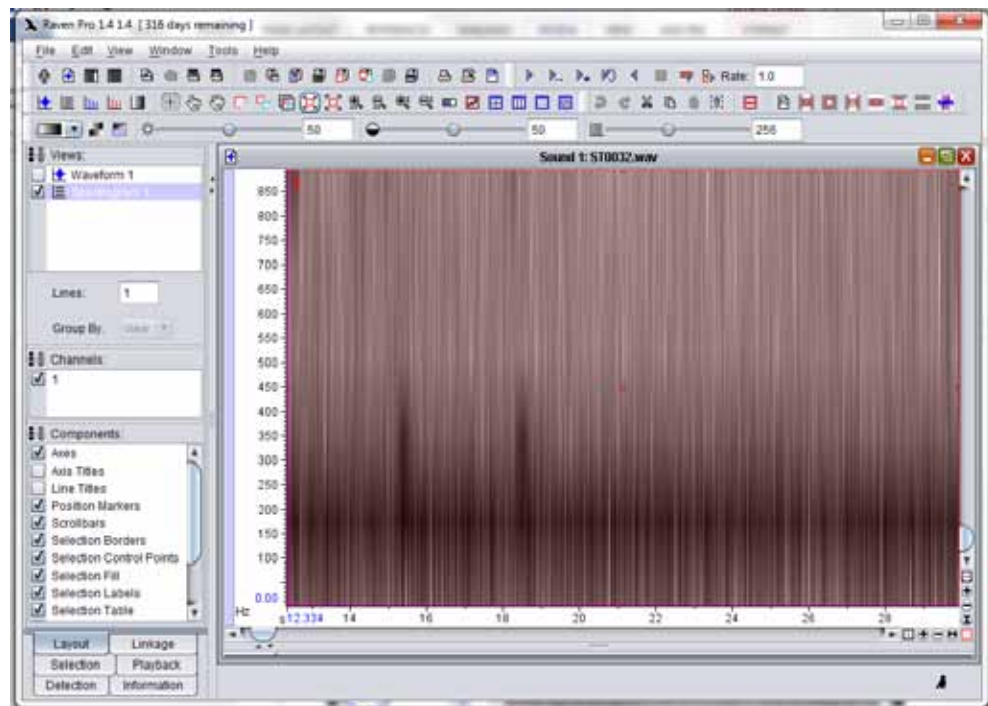


Figure A5.8. Zooming into an area of interest before sharpening the image.

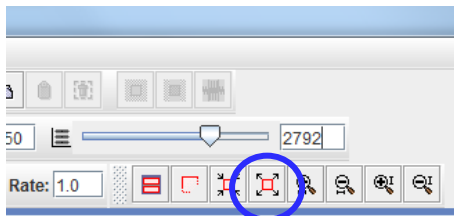


Figure A5.9. Showing the expand button (circled in blue).

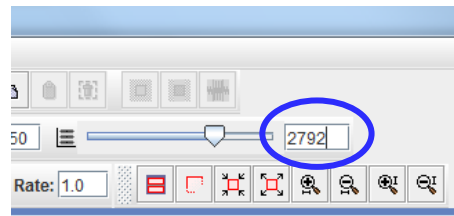


Figure A5.10. Alter the sharpness to a value of around 2792.

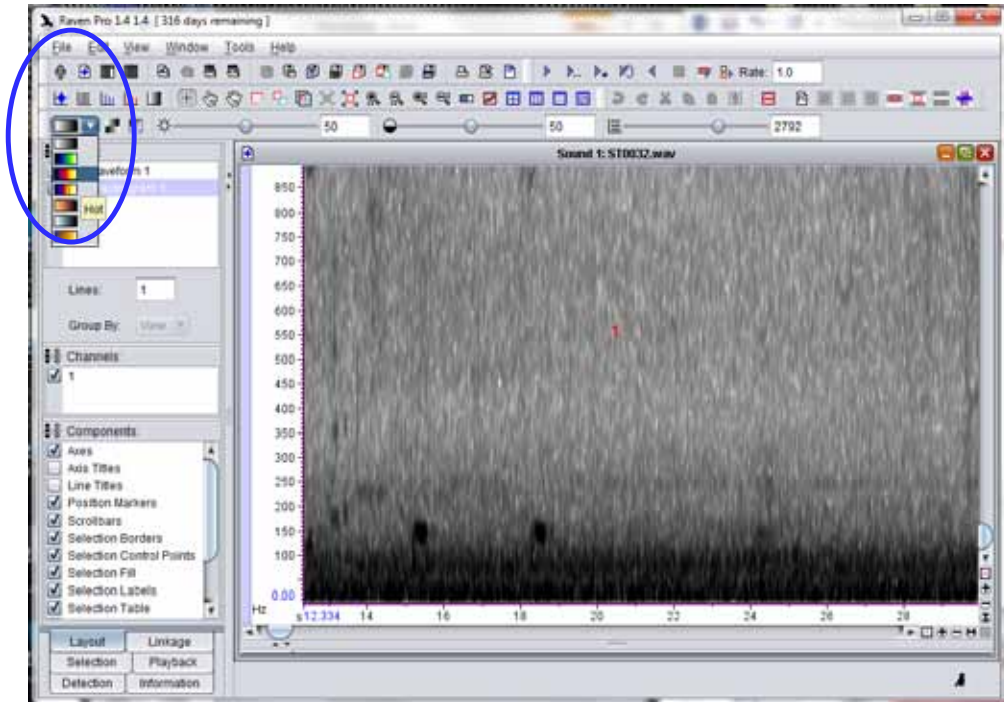


Figure A5.11. View after zooming in to the selection. The colour map drop box, where you can change the colour of the spectrograph, is circled in blue. The option 'hot' (3rd down) is recommended for seeing bittern booms.

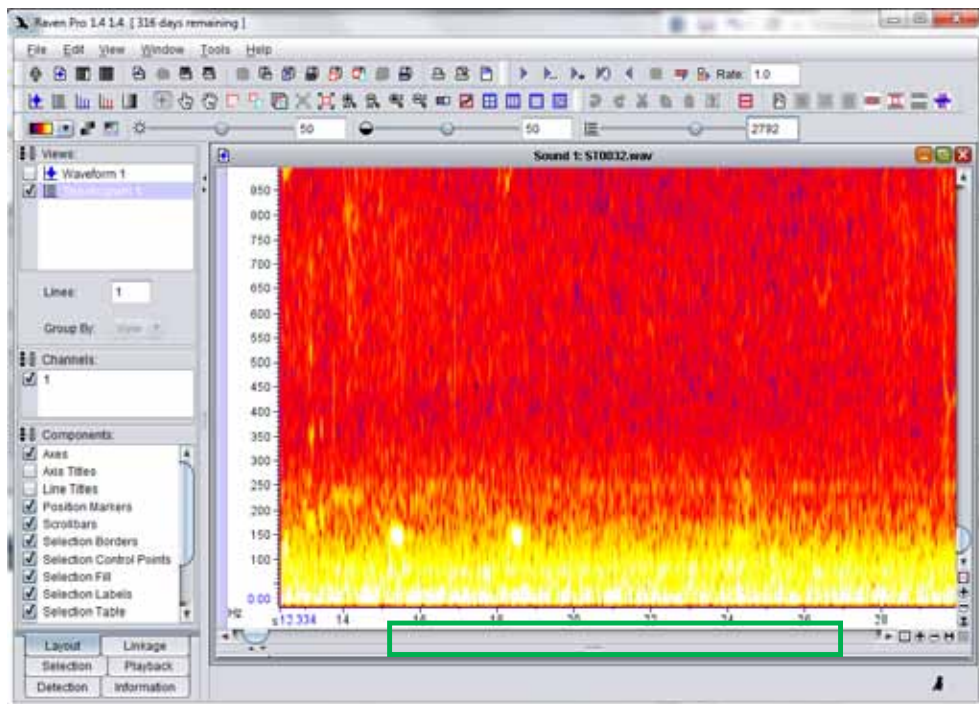


Figure A5.12. View after changing colour to 'hot'.

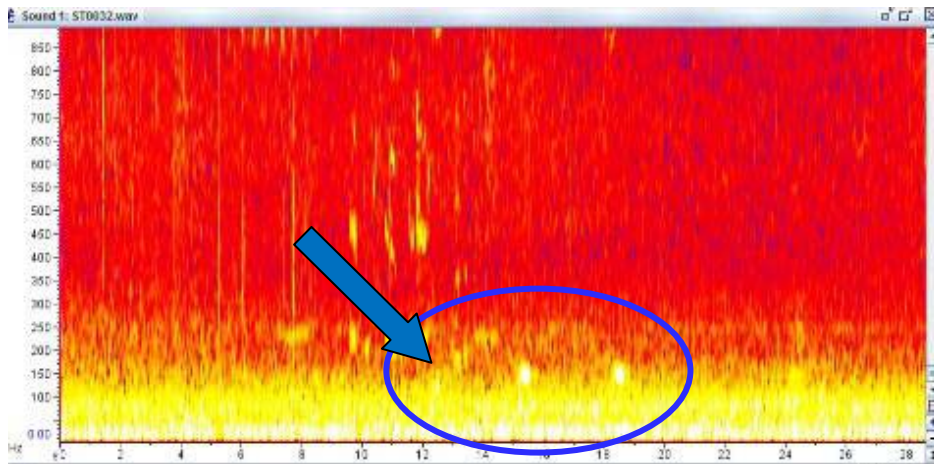


Figure A5.13. Bittertern booms become visible after changing the sharpness of the view to 2792.

#### A5.4 Detecting bittertern booms

You are looking for a series of small yellow/white signatures sitting at around the 150-Hz mark. Once you have found a suspect signature at this frequency, you should look at the following:

- **If more than one signature is present, do they appear in a pattern, with each signature roughly spaced at regular intervals?** If so, the call is likely to be a bittertern and worth further investigation. However, do not expect interval distances to be perfectly uniform. Occasionally, booms within a sequence will appear to be missing or only have a faint trace, so be aware that there can be a lot of variability. The distance between bittertern booms is usually about 1-3 seconds, but can be up to 10 seconds, particularly early in the booming season.
- **Are there any other patterns above the suspect signature?** Bittertern calls do not leave any imprints at frequencies higher than 200 Hz, so if patterns are appearing above the suspect signature then it is either not a bittertern or something has produced a noise at the same time as the bittertern.

You may need to listen to confirm that what you are seeing is definitely a bittertern boom, particularly when you are starting out. If in doubt, you are welcome to take a screenshot or cut that section of the call and send it to Emma Williams ([bittertern.wills@yahoo.com](mailto:bittertern.wills@yahoo.com)) for a second opinion. Note: It is not uncommon for bitterterns to produce single booms, or for one or more of the booms in a sequence to be less well defined.

Figure A5.14 shows several sample boom sequences that illustrate some of the variability you may encounter:

- One boom sequence containing three 'good', well-defined booms.
- One boom sequence containing three booms. Inhalations are visible around the 200-Hz mark in this example.
- One boom sequence containing three booms. This is much earlier in the booming season when the booms from some individuals are fainter and less well defined.
- One boom sequence containing two booms. If you look carefully, the inhalations are visible. Again, this is a recording taken much earlier in the season when the booms of some males sound more 'cough-like'.
- One sequence containing two booms that are barely visible because of faint train noises in the background. This example highlights the importance of careful placement of recording units.
- One sequence containing four booms that are barely visible because of high background noise (wind).

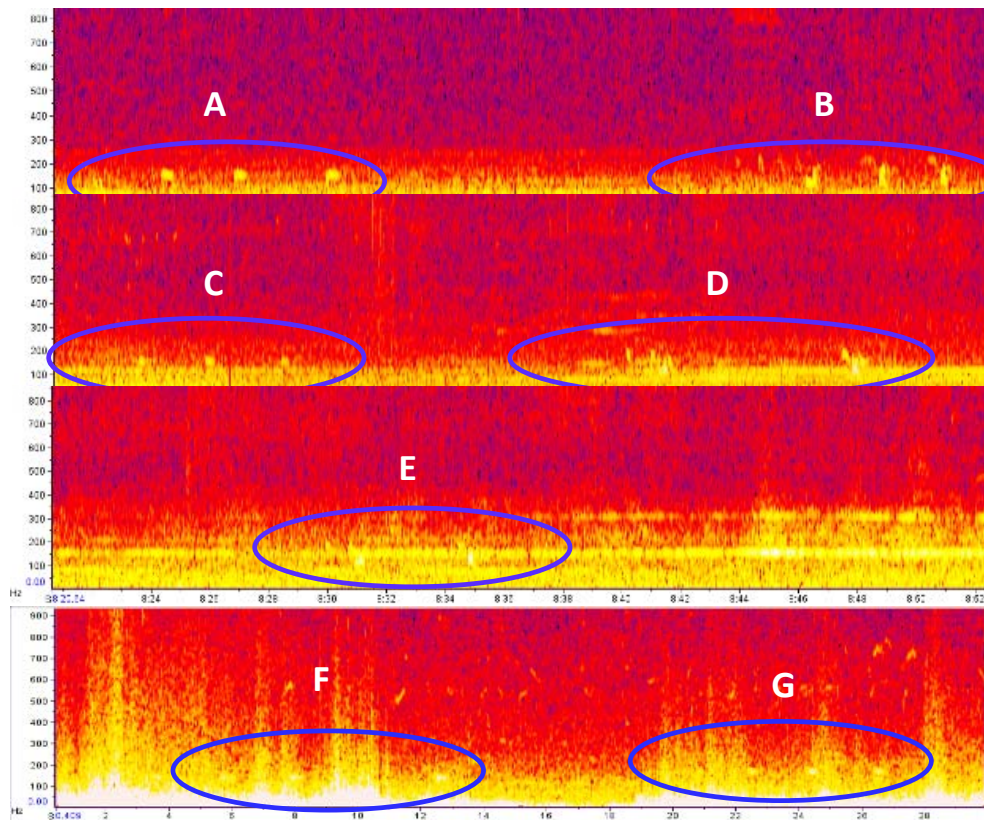


Figure A5.14. Examples of bittern boom sequences, showing the level of variation (see text for detail).

G. One sequence that contains at least three (but possibly four) booms. This sequence is also barely visible because of high background noise (wind).

Figure A5.15 shows some typical background noises:

H. Light wind can hide a bittern boom.

I. Cows can leave signatures at a similar frequency to bitterns but, unlike bittern signatures, will continue up at higher frequencies. Pūkeko (*Porphyrio porphyrio melanatus*) also make some calls that show as signatures around 200 Hz, which is why it is important to check for any imprints up to 800 Hz—if similar signatures appear at higher frequencies, it is very unlikely to be a bittern.

J. Swans can leave vocal signatures at a similar frequency to bitterns but, unlike bittern signatures, these calls are slightly lower in frequency and the signature often repeats at higher frequencies (approximately 300–350 Hz).

### A5.5 Listening to files to confirm booms

Listening to files can help to confirm a boom that is suspect. To do this, click on the window somewhere just before the suspect boom and play the file using the play button (circled in Fig. A5.16).

To hear bittern calls, you may need to invest in a pair of headphones that are of reasonable quality. Cheap headphones often do not cope well with lower frequency sounds such as bittern calls. We use Sennheiser headphones (HD 201 or HD 202), which can be purchased from most electronic stores and cost approximately NZ\$80. If in doubt, use the example soundfile provided (ST0032.wav) and its associated Excel spreadsheet (ExampleData.xls) to test that you can hear the bittern calls with your headphones. If you have not received a copy of these files and wish to do so, please contact Emma Williams (bittern.wills@yahoo.com)

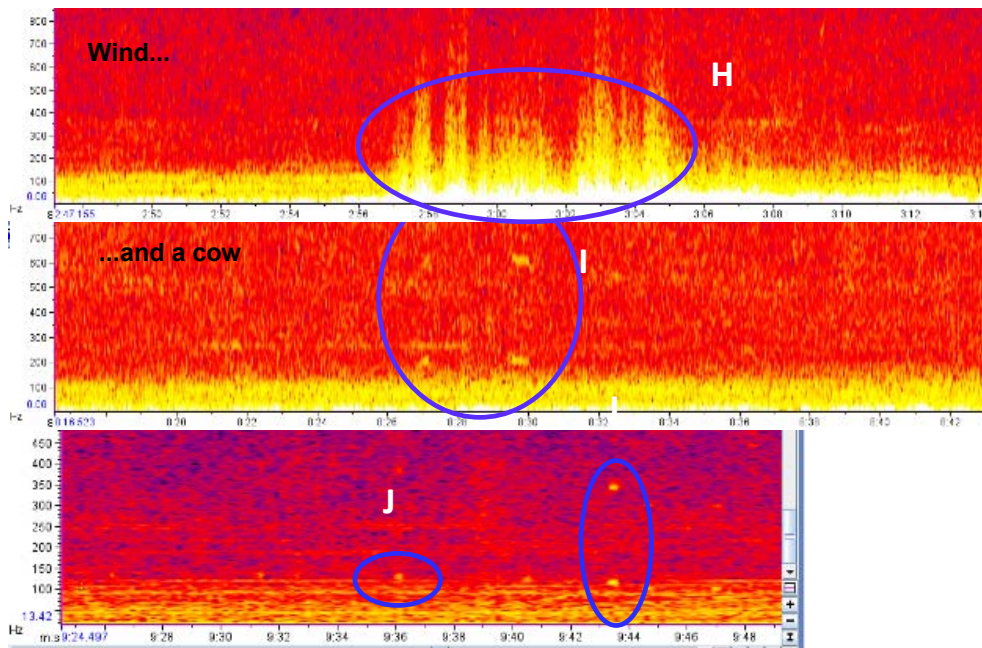


Figure A5.15. Disturbances that affect the ability to detect bitterns (see text for detail).

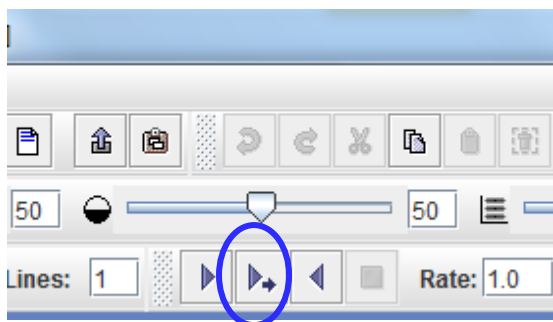


Figure A5.16. Play button.

### A5.6 Creating window presets (RavenPro only)

Once you are happy with your settings, you may wish to save them so that you can go straight to the optimal settings to see bittern calls as soon as each file is loaded.

To do this:

1. Make sure all of your settings are correct (see section A5.3).
2. Save your settings by clicking on View > Window Preset > Save As... (see Fig. A5.17).
3. Choose a suitable name for your preset (in this case 'Bittern' is appropriate).
4. Now, every time you open a file, select View > Window Preset > Bittern and your window will zoom automatically to the optimum settings to view bittern booms.

### A5.7 Selecting additional attributes to be measured (RavenPro only)

Depending upon your aims and objectives, you may wish to measure some additional attributes for each call found. These can be found below your spectrogram under the tab 'Table 1':

1. First, expand your view so that you can see the full table. To do this, left-click on the area shown in the green circle on Fig. A5.18 (note: when you do this, your cursor should change to a double-headed arrow as shown in the figure).
2. While holding your left mouse button down, drag the window upwards until you can see the full table.

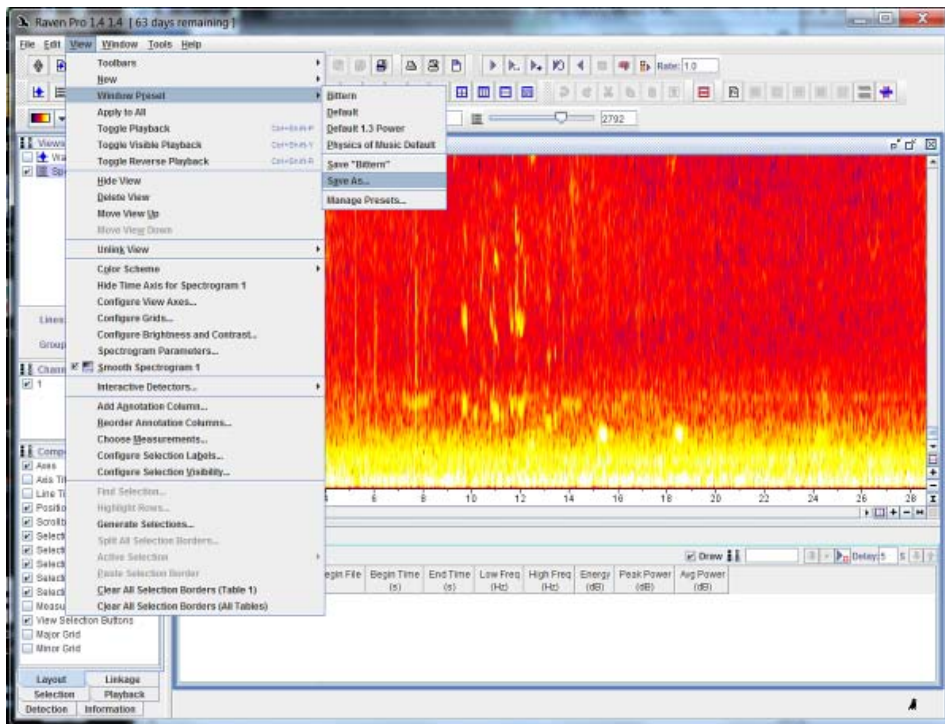


Figure A5.17. Creating preset window settings.

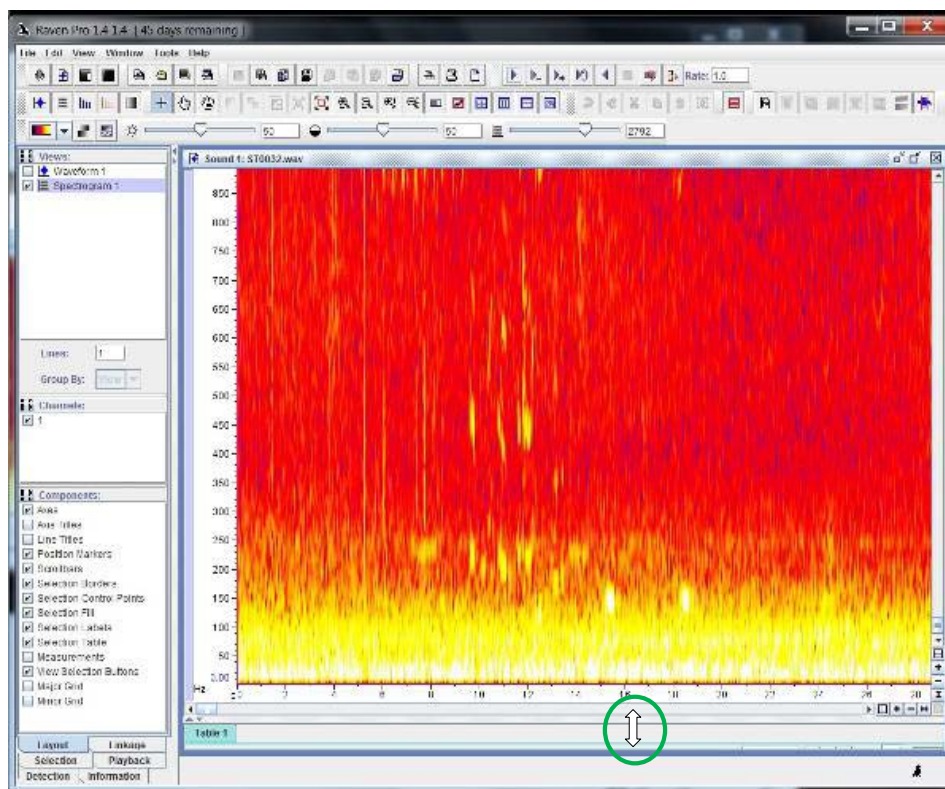


Figure A5.18. Expand the 'Table 1' tab by holding your mouse button down and dragging the bar upwards until the whole table is visible.

3. You will now see that your table already has some headers, e.g. 'Selection', 'View' and 'Channel'. If you right click on any of these headers you will get a dropdown list (Fig. A5.19). Go to 'Choose Measurements' from this list.
4. Now you can move any measurements that you are interested in into the left-hand box (see large blue circle on Fig. A5.20) using the double arrows (small circle on Fig. A5.20).



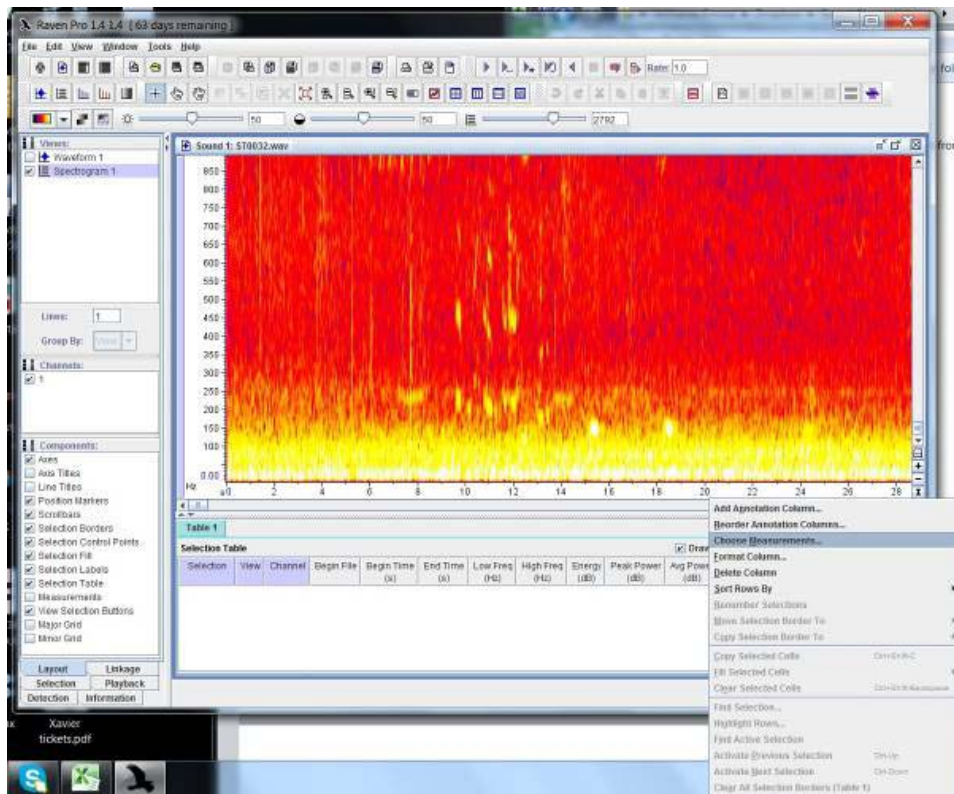


Figure A5.19. Drop-down list showing 'Choose Measurements' option.

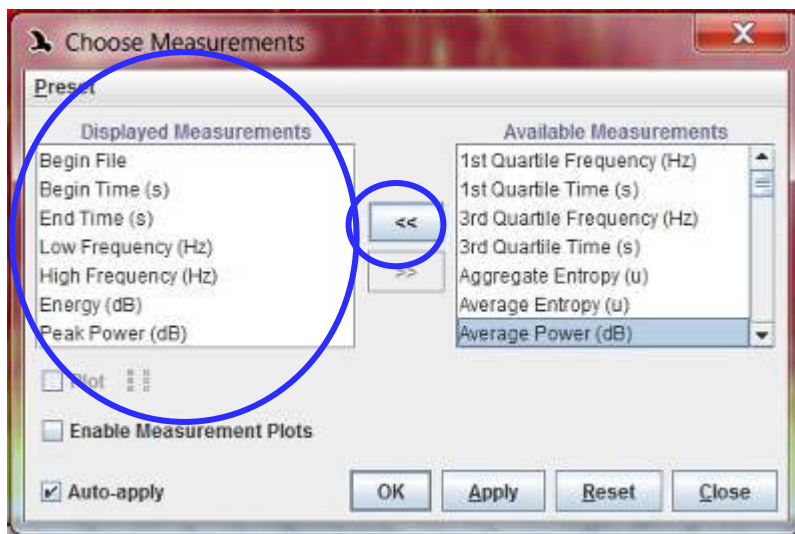


Figure A5.20. Choosing your measurements.

The following measurements are recommended:

**Begin File**—Contains the file name

**Begin Time (s)**—The number of seconds into the file where the boom starts

**End Time (s)**—The number of seconds into the file where the boom finishes

**Low Freq (Hz)**—Defines the bottom edge of the box you created

**High Freq (Hz)**—Defines the top edge of the box you created

**Energy (dB)**—The total energy within your defined area

**Peak Power (dB)**—The maximum power within the defined area; when using the colour ‘Hot’, this will be the power reading at the lightest point in the defined area

**Avg Power (dB)**—Measures the power per pixel and averages this across all pixels in the selection

You can change the order of your list by clicking and dragging attributes into the order that you would prefer. Reorder this list so that they are the same order as the spreadsheet that you are storing you data in.

Once you are happy with the list and its order, click on ‘Apply’. Now you are ready to take your measurements. If you have already created a preset window called ‘Bittern’, you should resave it with these settings by clicking on View > Window Preset > Save ‘Bittern’.

### A5.8 Measuring additional attributes of the call (RavenPro only)

To measure these additional attributes, first draw a box around the area you wish to assess—in this case, a single bittern boom. Take care to keep your box as small as possible so that you only include the specific sound you are interested in. Measurements for each of the attributes of this call will now appear automatically in the selection table at the bottom of your screen (Fig. A5.21).

You can copy and paste these into another program, e.g. Microsoft Excel. To do this, highlight the cells by clicking on them, then right click and go to ‘Copy Selected Cells’ (Fig. A5.22). Now they can be pasted wherever you would like them to go, e.g. in the relevant cells of Excel. Note: Holding down ‘Ctrl’ and ‘C’ does not work in Raven.

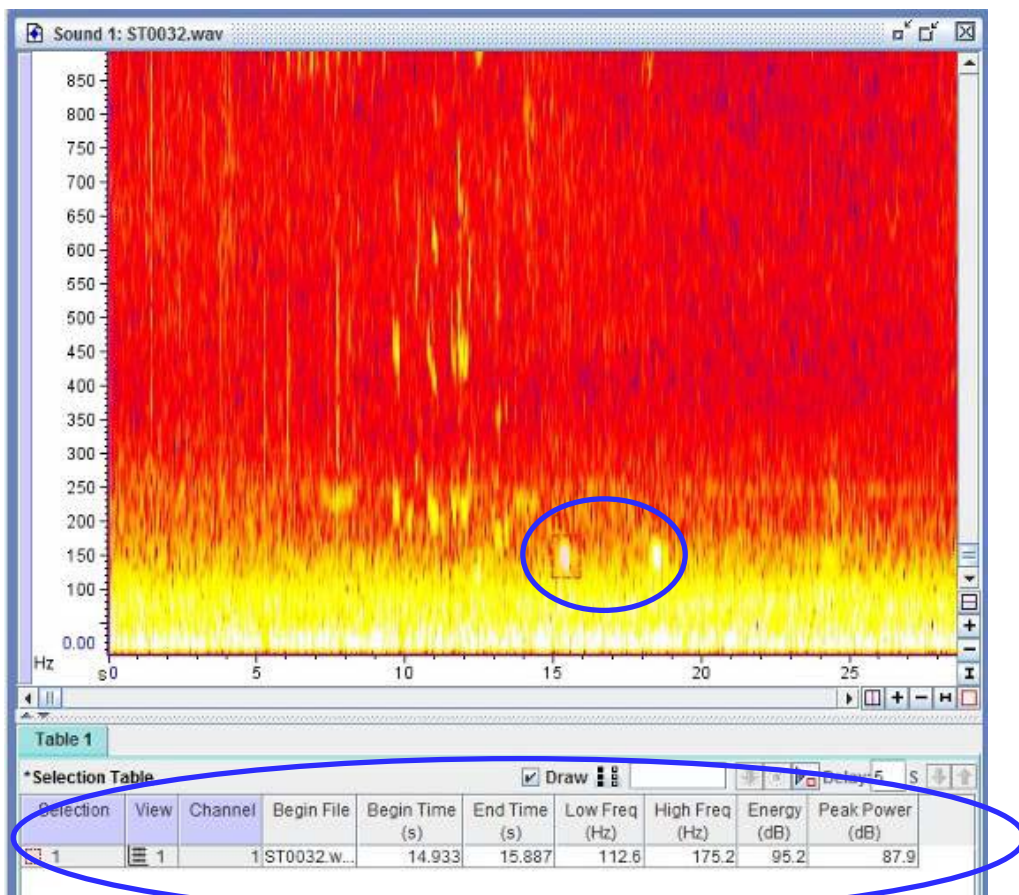


Figure A5.21. Showing additional attributes of the call in RavenPro 1.4.

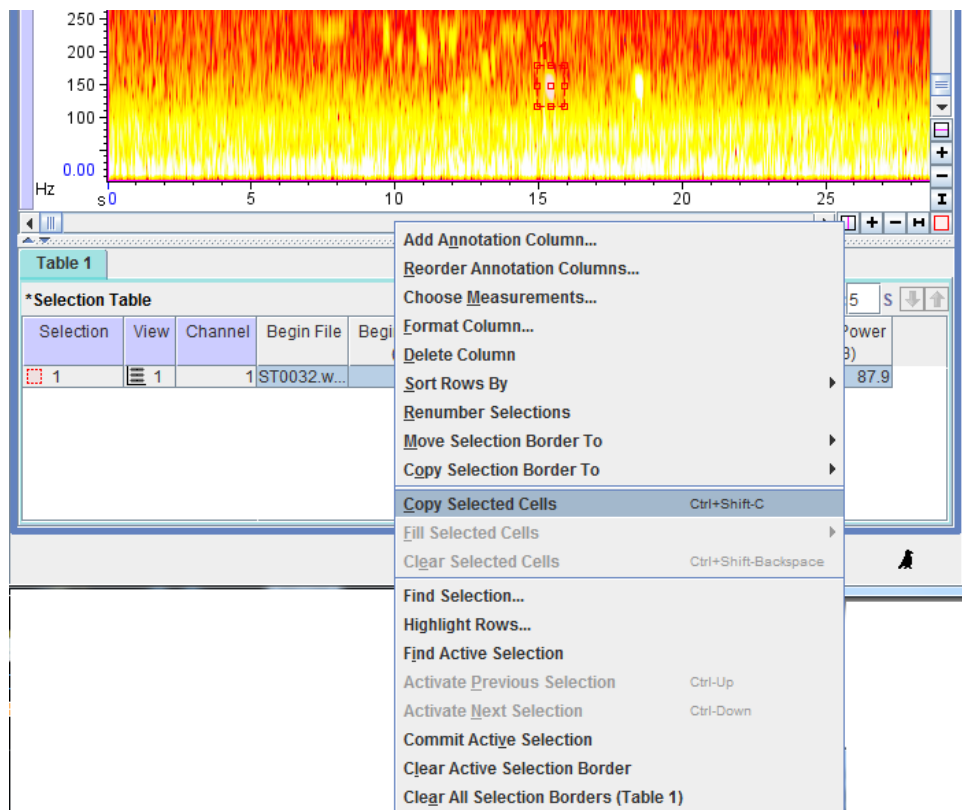


Figure A5.22. Copying the call attributes for use in another program.

## A5.9 Processing your sound files and entering your data

Each time you want to process a sound file you just have to complete the following steps:

1. Load the file (see section A5.3—‘Opening sound files’ if you need a reminder of how to do this).
2. Zoom to the relevant preset view (see section A5.6) by clicking on View > Window Preset > Bittern (if applicable).
3. Scroll through the file looking for any suspect calls by clicking on the scroll bar to move the screen forward by 15 seconds with each click (see area marked with a green square in Fig. A5.12):
  - If you find a call (or a suspect call), first have a listen (see section A5.5—‘Listening to files to confirm booms’). If you are not sure whether or not it is a bittern, you are welcome to send screenshots and sound files to Emma Williams at [bittern.wills@yahoo.com](mailto:bittern.wills@yahoo.com) for a second opinion. If it is a bittern, draw a box around each boom, then copy and paste the attributes that appear in the bottom of your screen into Excel as you go (see section A5.8—‘Measuring additional attributes of the call (RavenPro only)’). Note that ‘Ctrl’ and ‘C’ does not work in Raven. Add your initials under Processor, ‘Bittern’ in the species column, and number the booms (Boom#) and call sequence (Call#) accordingly; for example, if it is the second boom of the first call sequence to be found in that file, put one in the ‘Call#’ column and two in the ‘Boom#’ column. So if, for example, you found five booms in the first call sequence of a file, you would expect to input five rows of data numbered 1–5 under the column ‘Boom#’, each of which would be labelled with a 1 under the column ‘Call#’; if you then found that the second call sequence on the same file had two booms, you would expect to enter two rows of data numbered 1–2 under ‘Boom#’, each labelled with a 2 under ‘Call#’.
  - If no calls are found in a file, enter the file name in a row of your Excel spreadsheet, add your name as a processor and put ‘NONE’ in the column species. Now you are ready to start the next file.

# Appendix 6

## Example of data obtained from automatic recording stations

YEAR	SITE	STATION	EASTING	NORTHING	UNIT	MEMORY CARD	DATE OUT	DATE IN	TIMER 1: ON	TIMER 1: OFF	TIMER 2: ON	TIMER 2: OFF	MOON PHASE	LOCATION OF SOUNDFILES	NOTES
2009	Whangamarino	Bitt1	1793353	5864536	Unit1	MC01	29/09/2010	19/10/2010	05:00:00	07:00:00	18:30:00	20:30:00	2	C:\BitternData	
2009	Whangamarino	Bitt2	1793042	5865508	Unit2	MC02	29/09/2010	19/10/2010	05:00:00	07:00:00	18:30:00	20:30:00	2	C:\BitternData	
2009	Whangamarino	Bitt3	1792598	5866530	Unit3	MC03	29/09/2010	19/10/2010	05:00:00	07:00:00	18:30:00	20:30:00	2	C:\BitternData	
2009	Whangamarino	Bitt4	1792408	5867074	Unit4	MC04	29/09/2010	19/10/2010	05:00:00	07:00:00	18:30:00	20:30:00	2	C:\BitternData	
2009	Whangamarino	Bitt5	1791960	5868921	Unit5	MC05	29/09/2010	19/10/2010	05:00:00	07:00:00	18:30:00	20:30:00	2	C:\BitternData	
2009	Whangamarino	Bitt6	1793353	5864536	Unit6	MC06	29/09/2010	19/10/2010	05:00:00	07:00:00	18:30:00	20:30:00	3	C:\BitternData	
2009	Whangamarino	Bitt7	1792115	5870141	Unit7	MC07	29/09/2010	19/10/2010	05:00:00	07:00:00	18:30:00	20:30:00	3	C:\BitternData	
2009	Whangamarino	Bitt8	1792142	5870561	Unit8	MC08	29/09/2010	19/10/2010	05:00:00	07:00:00	18:30:00	20:30:00	3	C:\BitternData	

Sample data are from Whangamarino wetland and have been entered into a Microsoft Excel spreadsheet.

**Site:** Name of wetland

**Station:** Individual survey locations within the wetland

**Eastings/Northing:** Taken by a GPS using Transmercator

**Unit:** Name of recording unit

**Memory Card:** Name of memory card used

**Dates Out and In:** Dates recorders were put out in the field and then collected (dates available for sampling)

**Timer times:** Real time that the recorders were set to go on and off

**Moon Phase:** Number of days since the last full moon

**Location of sound files:** Directory showing where to find the associated sound files

**Notes:** Any additional notes (e.g. presence of other species of note)