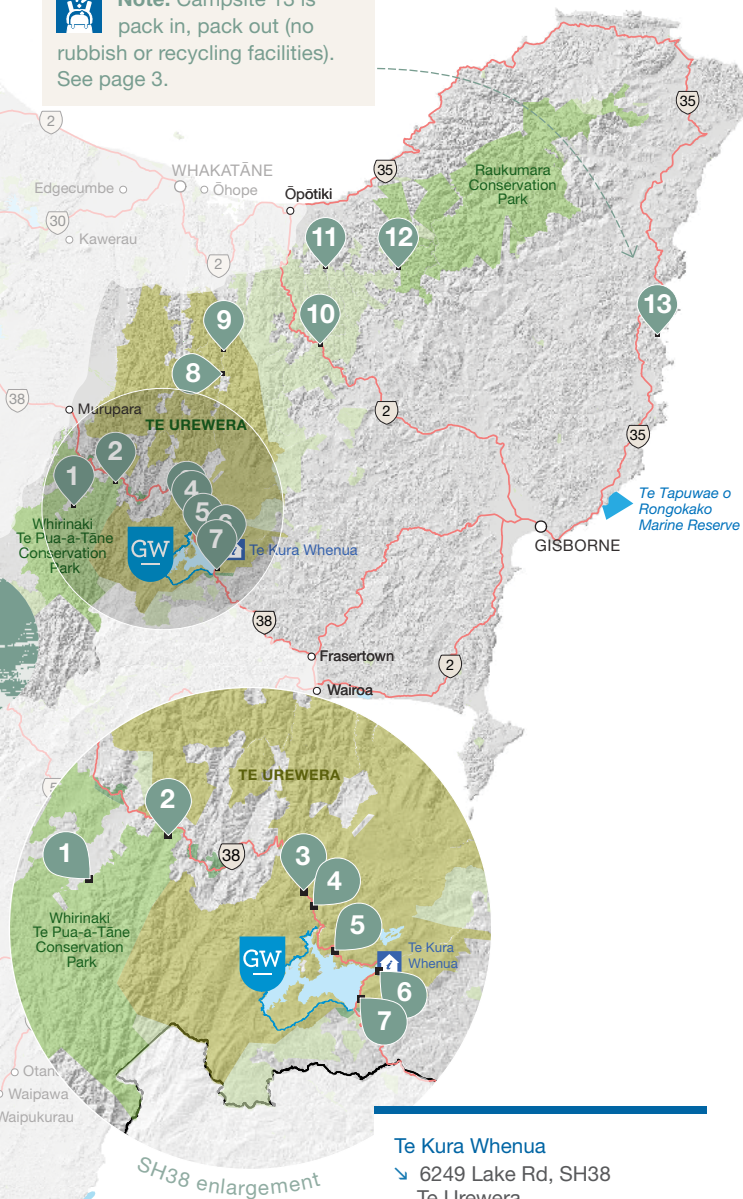


EAST COAST



Note: Campsite 13 is pack in, pack out (no rubbish or recycling facilities). See page 3.



Te Kura Whenua

- 6249 Lake Rd, SH38
Te Urewera
- (06) 837 3803
- teureweravc@ngaituhoe.iwi.nz

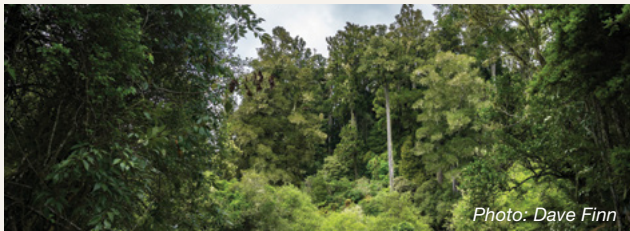


Photo: Dave Finn

1 Sanctuary

▲ 3

A small camp next to Minginui Stream; walk through podocarp forest.

Directions: From Minginui Rd turn into Sanctuary Rd and follow to the end. **Access:** Gravel from Minginui.

Note: Dogs by permit only.

LATITUDE: -38.66351 LONGITUDE: 176.72772

BASIC



2 Mid Okahu

▲ 15

Camp on grass terraces adjacent to Okahu Stream. There is good picnicking and walking in the forest.

Directions: Follow Ruatahuna Rd (formerly SH38) from Murupara and turn into Okahu Rd at Ngaputahi.

Access: Gravel from Te Whaiti. 4WD recommended.

Note: Dogs by permit only.

LATITUDE: -38.60930 LONGITUDE: 176.83976

BASIC



Te Urewera

Te Urewera is the spiritual home of Ngāi Tūhoe, and is recognised in New Zealand law as a living person. She is spoken for and governed by a board. Care for Te Urewera, including the tracks and facilities, is carried out by Te Uru Taumatua – Ngāi Tūhoe's operational entity. They are developing a new kind of visitor experience designed to foster a meaningful relationship with Te Urewera and with Ngāi Tūhoe.

A trip to Lake Waikaremoana is an opportunity to immerse yourself in the culture and history of Te Urewera. Check www.ngaituhoe.iwi.nz for alerts and updates before your trip. Visitors can also phone Ngāi Tūhoe on (06) 837 3803 or email teureweravc@ngaituhoe.iwi.nz for information.

3 Orangihikoia

▲ 10

Camp in a remote setting and go hunting, walking or fishing.

Directions: Next to Waikaremoana Rd (formerly SH38) between Te Whaiti and north of Lake Waikaremoana.

Access: Gravel, narrow and winding.

LATITUDE: -38.66800 LONGITUDE: 177.04067

BASIC



4 Te Taita O Makoro

 10

Camp by a stream, hunt, walk or relax.

Directions: Next to Waikaremoana Rd (formerly SH38), 4 km north of Lake Waikaremoana.

Access: Gravel, narrow and winding.

LATITUDE: -38.68253 LONGITUDE: 177.05644


BASIC


Photo: Brian Dobbie

5 Mokau Landing

 40

Large grassy site between native rainforest and the lake, 1.5 km from Mokau Falls.

Directions: Drive west around the lake for approx 10 km from SH38 at Aniwaniwa. **Access:** Gravel, narrow and winding.

LATITUDE: -38.73296 LONGITUDE: 177.08975


STANDARD


Photo: DOC

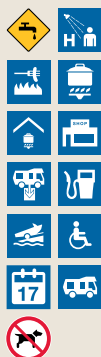
6 Waikaremoana Holiday Park

 32  26

Camp next to the lake with beautiful views, visit the 1000-year-old rātā tree and Te Kura Whenua. Chalets and cabins available.

Directions: Lake Waikaremoana, adjacent to SH38, in Opourau Bay. Approx 1 hour (57 km) from Wairoa on SH38, some narrow and gravel sections. From Rotorua, after Murupara approx 2 hr drive on scenic winding gravel roads, with spectacular views. **Booking:** Required; book online or ph (06) 837 3826.

LATITUDE: -38.75344 LONGITUDE: 177.15559


SERVICED

7 Rosie Bay

▲ 6



Rosie Bay Campsite is closed until further notice.

Camp at the lakeshore in a secluded bay with stunning views. This is a popular campsite and a good base for lake activities.

Directions: Lake Waikaremoana, SH38, 10 km south of Te Kura Whenua. **Access:** Gravel, sections narrow and winding.

LATITUDE: -38.78602 LONGITUDE: 177.13036

BASIC



8 Te Pakau (Eight Acre)

▲ 60

Once a dairy farm, this campsite is near the Waimana River. There are numerous walks into the spectacular forest nearby.

Directions: Follow Bell Rd off SH2 near Waimana and then onto Matahi Valley Rd. Campsite is 27 km (80-min drive) from SH2. **Access:** Gravel from Taneatua.

LATITUDE: -38.36411 LONGITUDE: 177.12078

BASIC



Photo: DOC

9 Omahuru (Ogilvies)

▲ 40

Camp, swim, fish or relax beside the river in the Waimana valley. Take binoculars for birdwatching.

Directions: Follow Bell Rd off SH2 near Waimana and then onto Matahi Valley Rd. Campsite is 18 km (a 60-min drive) from SH2. **Access:** Gravel road.

LATITUDE: -38.31269 LONGITUDE: 177.12122

STANDARD



10 Manganuku

▲ 20

Camp beside one of the few remaining historical Howe truss bridges; there is good river fishing.

Directions: Beside SH2, south of Ōpōtiki and approx 4 km south of Wairata, Waioeka Gorge.

Access: Sealed.

LATITUDE: -38.29072 LONGITUDE: 177.38542

STANDARD





Photo: Neil Hutton

11 Boulders

▲ 16

Next to the Te Waiti Stream, surrounded by nīkau and tawa forest; this area is popular for picnicking.

Directions: South of Ōpōtiki take Otara Rd and turn into Te Waiti Rd for 4 km. **Access:** Narrow gravel road with a low ford to cross; 4WD required. The track down to the campsite is steep and rough; drive with caution.

LATITUDE: -38.12292 LONGITUDE: 177.39056



BASIC

12 Whitikau

▲ 16

A remote campsite at the Whitikau entrance to Raukumara Conservation Park. Walk, tramp, fly fish, swim, mountain bike or hunt here.

Directions: Takaputahi Rd, off old Motu Road, between Ōpōtiki and Motu at the junction of the Whitikau Stream and Takaputahi River.

Access: Small campervans only; gravel road for 1 hr.

LATITUDE: -38.11724 LONGITUDE: 177.58985



BASIC



Photo: DOC

13 Anaura Bay

▲ 75

Camp next to a beautiful beach alongside a stream, surrounded by forest and coastal bush.

Directions: SH35, 85 km north of Gisborne, between Tolaga Bay and Tokomaru Bay. **Access:** Sealed road. **Note:** Open from Labour weekend (October) to Easter. Toilets NOT provided (bring your own chemical toilet). Dump station available all season.

Booking: Required.

LATITUDE: -38.23304 LONGITUDE: 178.30831



STANDARD