

Addendum to the  
Tongariro National Park  
Management Plan 2006 - 2016  
as required by the Partial Review  
2011

OCTOBER 2011



Department of Conservation  
*Te Papa Atawhai*

© Copyright November 2011, New Zealand Department of Conservation

ISSN 0111-5804

Tongariro/Taupo Conservation Management Planning Series 4

Published by  
Department of Conservation  
Tongariro Whanganui Taranaki Conservancy  
Private Bag 3016  
Whanganui,  
New Zealand

In the interest of forest conservation, we support paperless electronic publishing.

## CONTENTS

Background to the 2010/2011 partial review	2
<hr/>	
Approved text and map changes	3
<hr/>	
Section 4.3.2.12. Mountain Biking	3
Delete Policy 10	3
Delete Policy 11	3
Section 4.4.2.5. Transport	3
Delete Policy 9	3
Amend Policy 10	3
Map 11. Turoa Ski Area	4
Replace map	4
Map 12. Whakapapa Ski Area	5
Replace map	5
Map 14. Tukino Ski Area	6
Replace map	6
Section 5.2.11. Vehicular Access onto Ski Areas	7
Amend preamble, delete paragraph three and insert three new paragraphs	7
Insert a new Policy 4	7
Insert a new Policy 5	7
Section 6.1. Introduction	7
Delete Policy 14	7
Section 7.2. Glossary	8
Insert a new definition	8

# Background to the 2010/2011 partial review

The 2010/2011 partial review of the Tongariro National Park Management Plan was prepared in accordance with sections 46 and 47 of the National Parks Act 1980. It reviewed sections of the existing Tongariro National Park Management Plan 2006-2016 that were no longer working or necessary due to increased knowledge and/or changing circumstances.

The five policies and/or sections include:

1. Removal of Mountain Biking on concessions and event management on the Old Coach Road and Desert Road to Pillars of Hercules tracks;
2. Removal of the Transport Concession Limit for the Tongariro Alpine Crossing (TAC);
3. Removal of 04-05 Financial Returns to set TAC Passenger Limit;
4. Allowing Over-Snow Passenger-Service Transport Use within Ski Areas; and
5. Removal of the Sole Winter Transport Operator on Bruce Road.

The Tongariro Whanganui Taranaki Conservancy prepared the partial review of the management plan in consultation with key stakeholders, including the Tongariro Taupo Conservation Board, iwi, concessionaires and other interested groups and individuals via a discussion document released in April 2010. Feedback from the discussion document was sought on the existing TAC Policies and proposed Over-Snow Passenger-Service Transport. A total of 51 written suggestions were received and taken into account by the department during the development of the partial review.

The draft partial review was publicly notified for comment (submissions) on 8 October 2010 until 10 December 2010. A total of 48 submissions were received. All comments were considered by a hearing panel comprising members of the Tongariro Taupo Conservation Board and Departmental representatives. Hearings were held in Turangi in person and over the phone for those submitters who indicated they wished to be heard.

As a result of the hearings and consideration of all submissions, changes were made to the draft partial review prior to it being presented to the New Zealand Conservation Authority (NZCA) on 23 June 2011 for approval. Following consideration by the NZCA and the Minister of Conservation, some further changes were made before the partial review was approved by the NZCA on 13 October 2011.

The partial plan review is part of, and will be effective for, the life of the Tongariro National Park Management Plan 2006-2016.

# Approved text and map changes

## Section 4.3.2.12 Mountain Biking

### *Delete Policy 10, page 155*

~~Concessions should not be granted for mountain biking on the Old Coach Road or the Desert Road – Pillars of Hercules Track.~~

### *Delete Policy 11, page 155*

~~Public mountain-biking events should not be allowed on Old Coach Road or the Desert Road – Pillars of Hercules Track.~~

## Section 4.4.2.5 Transport

### *Delete Policy 9, page 177*

~~There should be no net increase in the number of transport concessions granted for the Tongariro Crossing.~~

### *Amend Policy 10, page 177*

“The department will recommend to the Minister a maximum daily number of passengers for transport operators on the Tongariro Alpine Crossing. ~~Passenger numbers should be set at a level determined after consultation by the department with operators, taking into account operators’ returns up to the financial year ending 2004/05. Refer to 4.3.1.13 Managing Visitor numbers on the Tongariro Crossing.~~

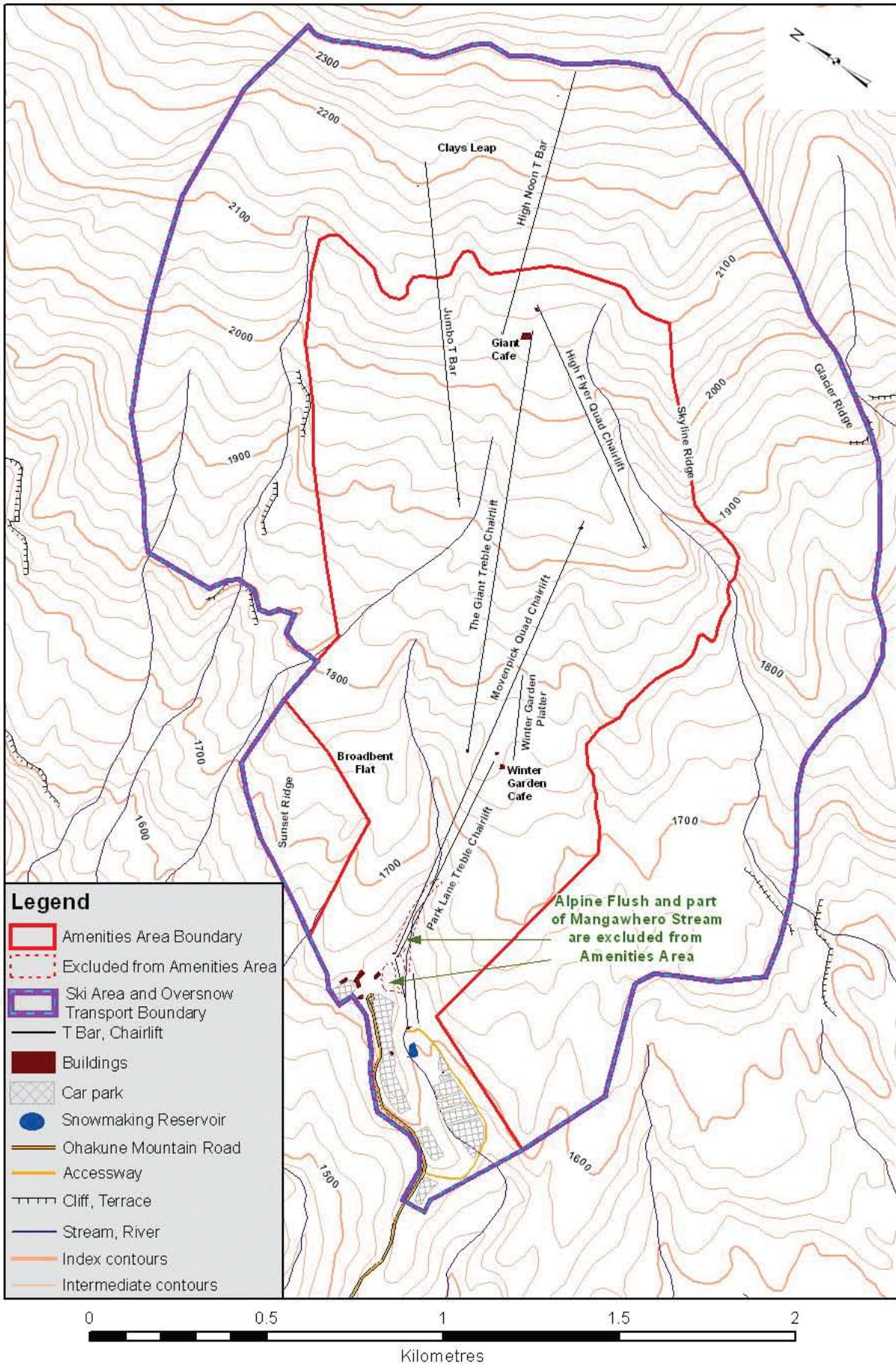
**Insert:** “Concessions may include conditions to manage adverse effects for example addressing crowding by restricting drop off times. Passenger numbers may be set by the Minister following consultation with concessionaires.”



**Map 11 Turoa Ski Area**

*Replace map, page 203*

**Map 11 Turoa Ski Area**

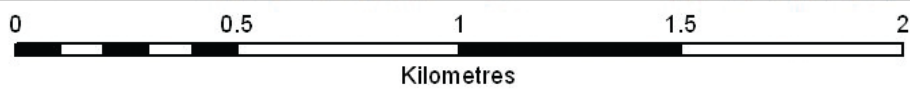
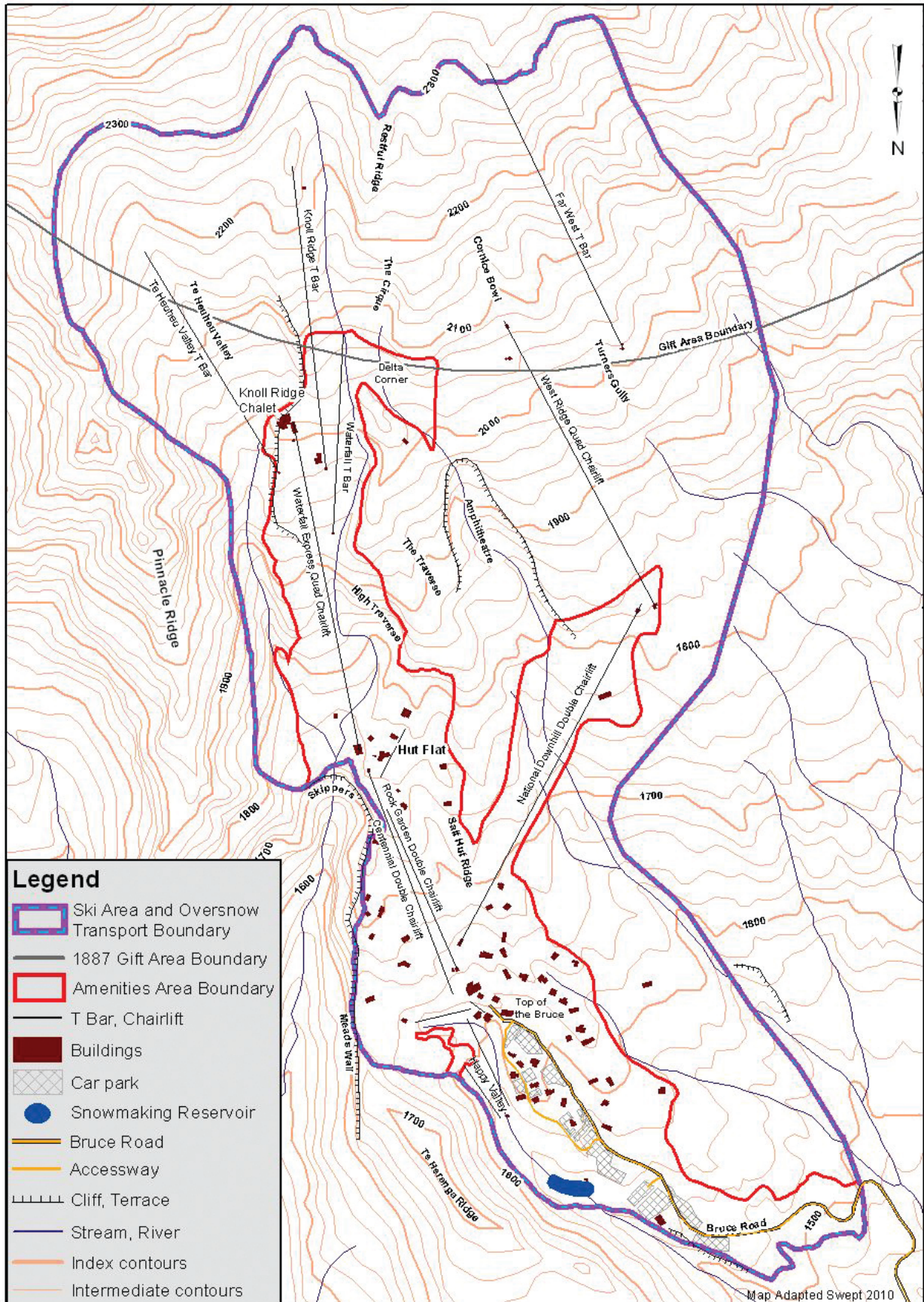




# Map 12 Whakapapa Ski Area

Replace map, page 209

## Map 12 Whakapapa Ski Area

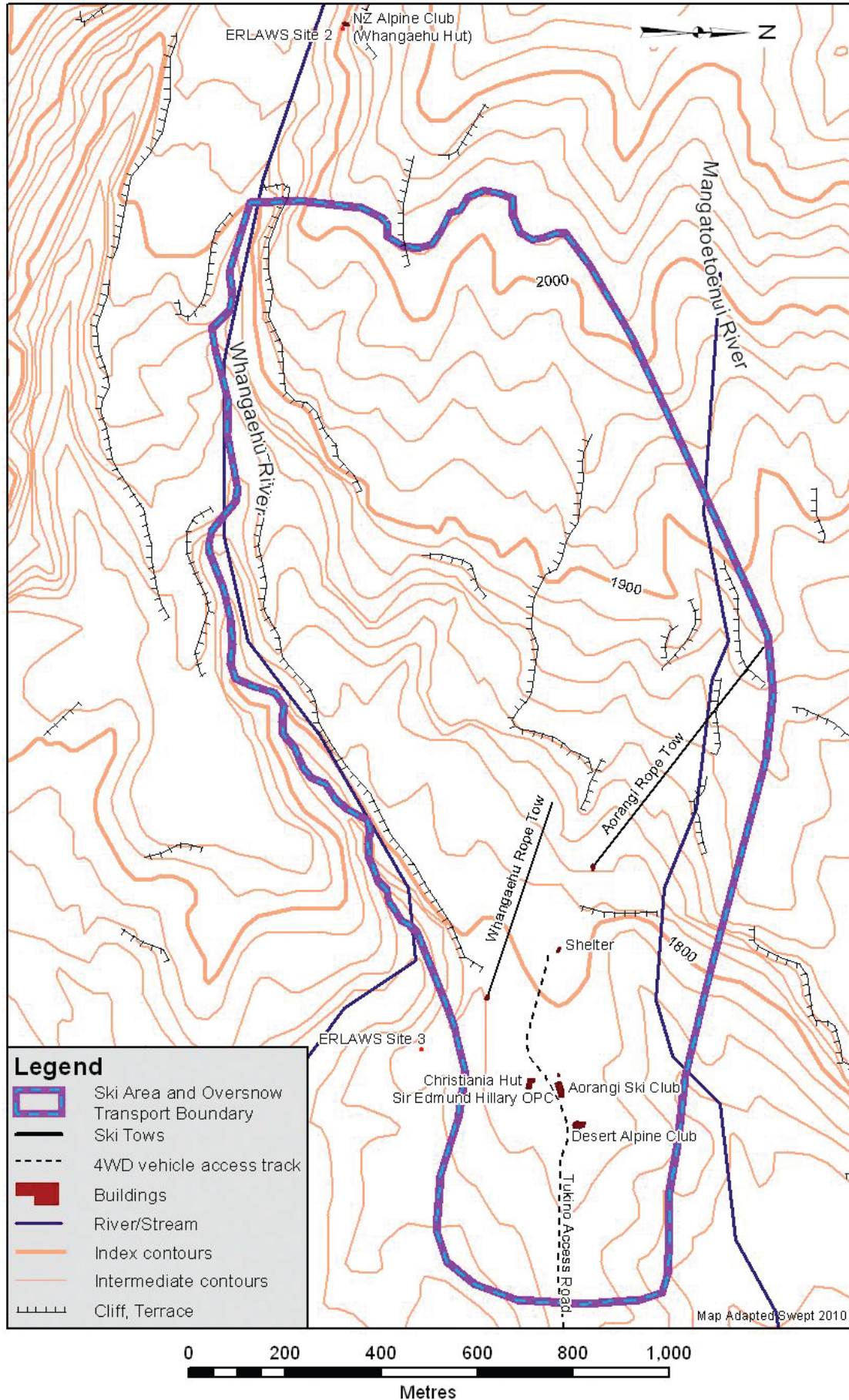




**Map 14 Tukino Ski Area**

*Replace map, page 217*

**Map 14 Tukino Ski Area**





## Section 5.2.11 Vehicular Access onto Ski Areas

***Amend preamble, delete paragraph three and insert three new paragraphs, page 235***

~~The department will actively discourage concessionaires from using noisy over-snow vehicles and machines and will seek to restrict their use to essential management needs such as safety, grooming and emergencies. The use of over-snow vehicles by the public is not necessary within ski areas.~~

**Insert:** “The department notes that the environmental effects of installing additional tows/lift structures will have significant impacts on the surrounding environment and remote experience. The department considers that the risks of using over-snow vehicles as an alternative form of public transport can be managed appropriately by placing restrictions around their use and general ski field management.

However, utilising over-snow vehicles to transport passengers and goods may adversely affect the experience of visitors to the ski clubs and other recreational users. For this reason, applicants seeking to carry out over-snow passenger-service transport are required to avoid any such effects by operating within terms and conditions restricting excessive noise levels, hours and location of operation and the type of vehicle.

The use of private over-snow vehicles by individuals or private groups is not necessary within ski areas.”

***Insert a new Policy 4, page 235***

**Insert:** “The department will consider an applications to undertake limited over-snow passenger transport service by licensed ski field operators:

- a) at Tukino within the current ski area boundaries; and
- b) at Turoa and Whakapapa within the current ski area boundaries where services will be limited to transport to and from club lodges, ski area buildings and during organised events.”

***Insert a new Policy 5, page 235***

**Insert:** “Approved concessionaires will be required to avoid effects relating to noise levels, hours and location of operation and type of vehicle.”

## Section 6.1 Introduction

***Delete Policy 14, page 247***

~~Provision will be made for a single transport concession operation on the Bruce Road. There is a need to limit the service to a single concession due to environmental impacts associated with parking.~~

## Section 7.2 Glossary

### *Insert a new definition, page 295*

**Over-snow  
passenger-service  
vehicle**

A vehicle designed for use in the snow, powered by a propulsion system moving on skids, tracks or wheels (commonly known as a snow cat, coach, plough or groomer) and used to provide a carriage service to passengers for hire within the ski field areas shown on Maps 11, 12 and 14 in line with concession requirements but does not include:

- a) Light over-snow vehicles or snow mobiles designed to accommodate 3 people or less inclusive of the driver;
- b) Cars, motorbikes or 4 wheel drive type vehicles classed for road usage;
- c) 4-wheel drive or off road type vehicles; or
- d) Any other unlicensed vehicles or device powered by a motor.





New Zealand Government