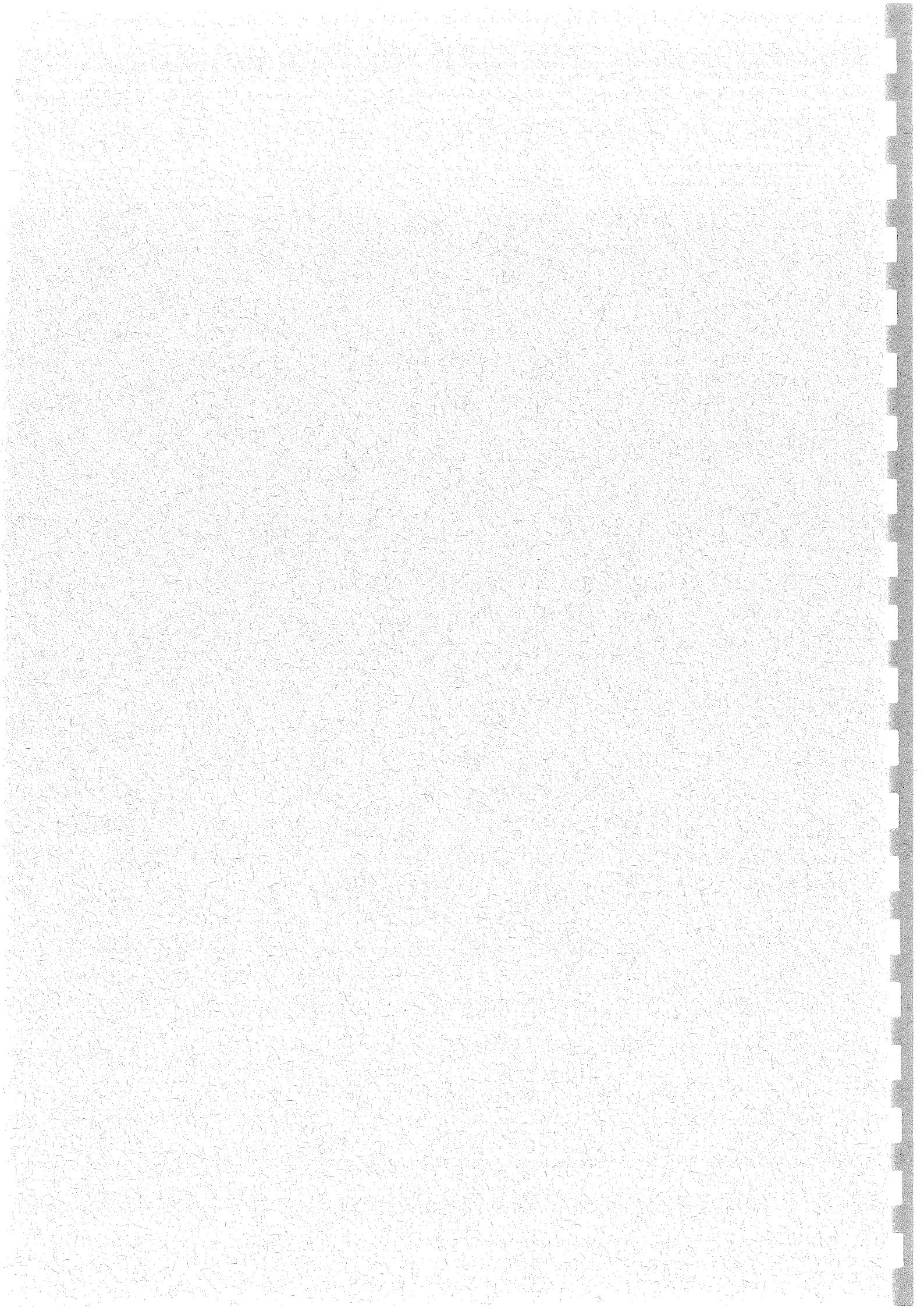


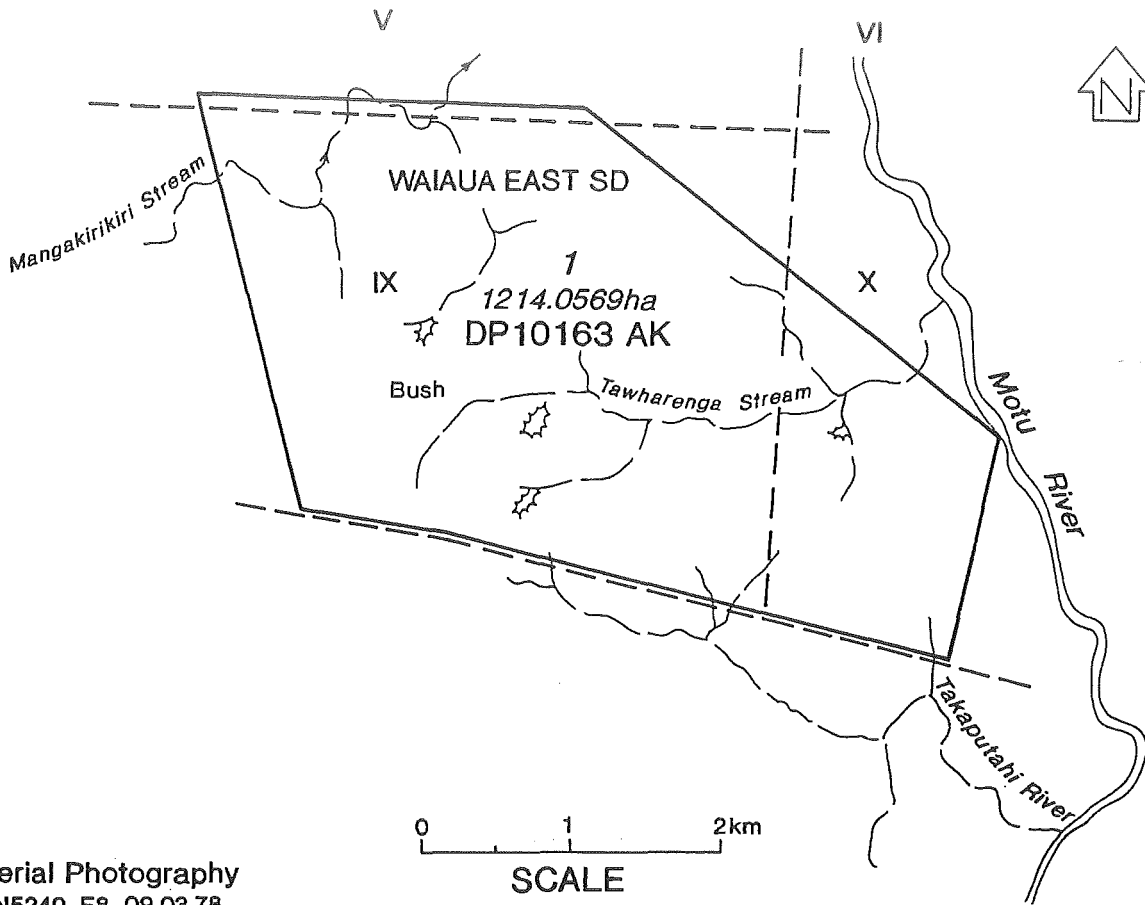
# RAUKUMARA SUBREGION



LANDS MANAGED IN THE RAUKUMARA SUBREGION
--

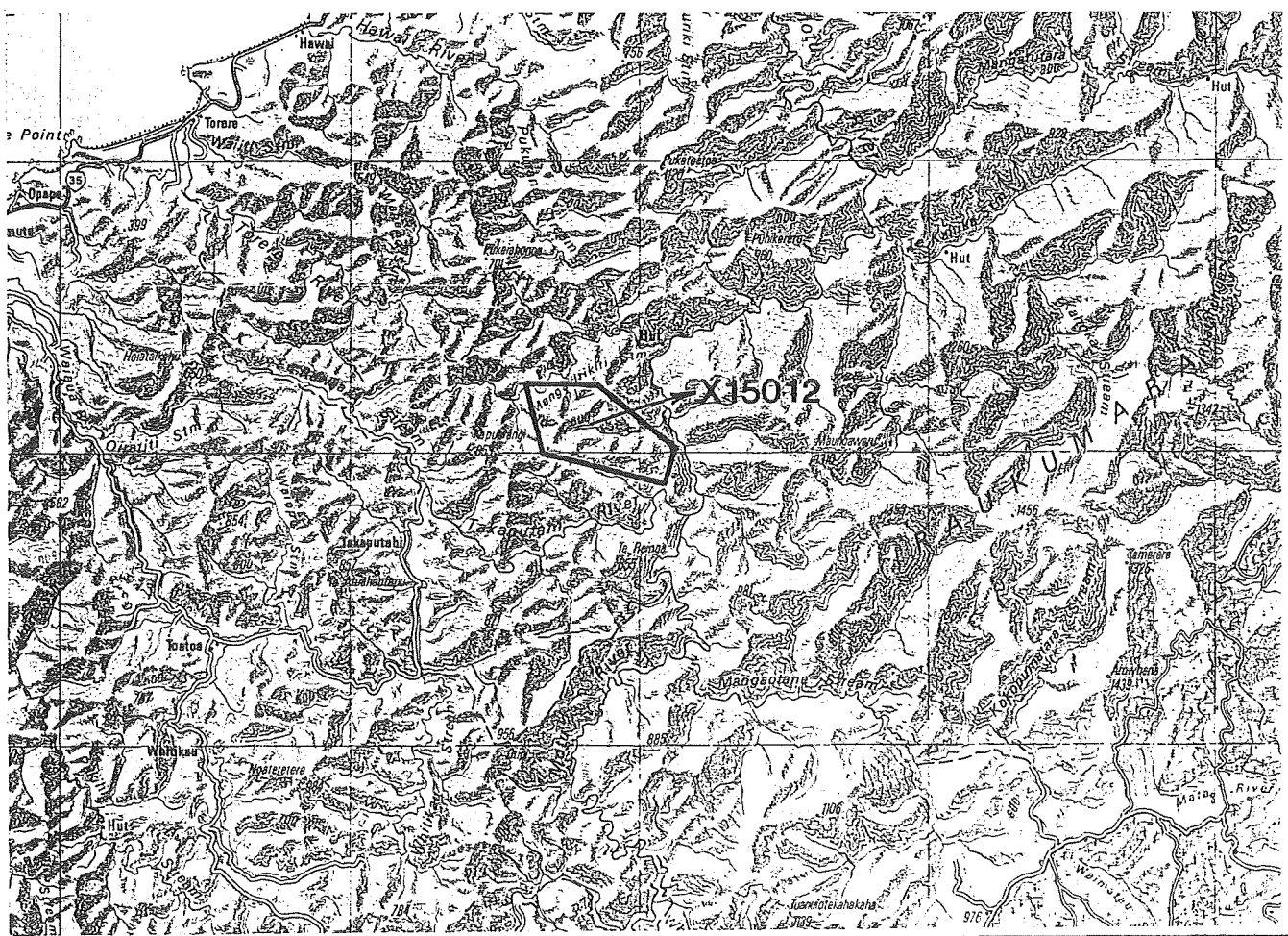
- ▲ Kapuarangi Conservation Area
- ▲ Kopuapounamu Conservation Area
- ▲ Littleworth's Conservation Area
- ▲ Mullanies Conservation Area
- ▲ Pukeamaru Scenic Reserve
- ▲ Raparapaririki Conservation Area
- ▲ Raparapaririki Conservation Area
- ▲ Raparapaririki Conservation Area
- ▲ Raukumara Conservation Park
- ▲ Tokomaru Conservation Area

# KAPUARANGI CONSERVATION AREA (X15012)



Aerial Photography  
SN5240 E8 09.03.78

SCALE



### KAPUARANGI CONSERVATION AREA

<b>Field Centre:</b>	Opotiki	<b>Inventory Ref:</b>	X15012
<b>Local Authority:</b>	Opotiki DC	<b>File Ref:</b>	CSF100
<b>Sub Region:</b>	Raukumara	<b>Area (ha):</b>	1214.0569
<b>Tangata Whenua:</b>	Ngai Tai	<b>CMP:</b>	No
<b>Legal Description:</b>	Lot 1. DP 10163 AK, Blocks IX & X, Waiaua SD.		
<b>General Description:</b>	Semi-coastal forest.		

### NATURAL AND HISTORIC VALUES

Semi-coastal forest.

Details of natural, historic and recreational values unknown.

### THREATS TO NATURAL AND HISTORIC VALUES

Pests include: gorse. Other threats include fire, visitor pressure (unauthorised structures, rubbish, uncontrolled camping).

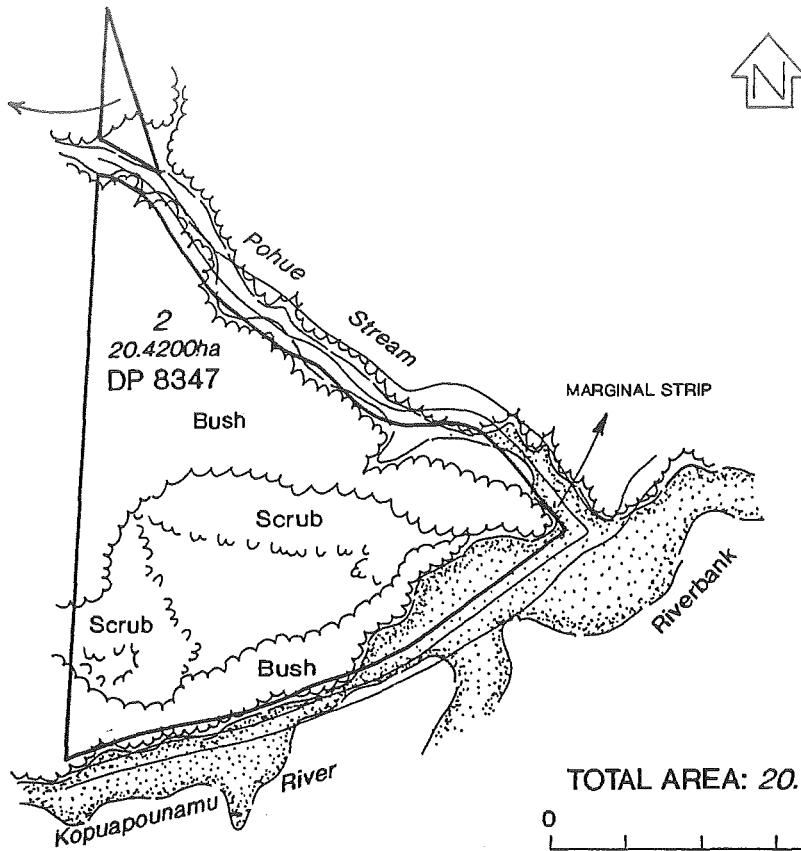
### MANAGEMENT

**Management Needs:** archaeological survey; botanical and faunal survey.

**Management Objectives:** Primarily General Ecosystems Management (*s.3.3.12 refers*) and Ecological Information, Survey and Monitoring (*s.3.3.13 refers*). Historic Places (*s.3.3.7 refers*) and Freshwater Fish (*s.3.3.27 refers*) also relevant.

# KOPUAPONAMU CONSERVATION AREA (Y14008)

3  
5280m<sup>2</sup>  
DP 8347

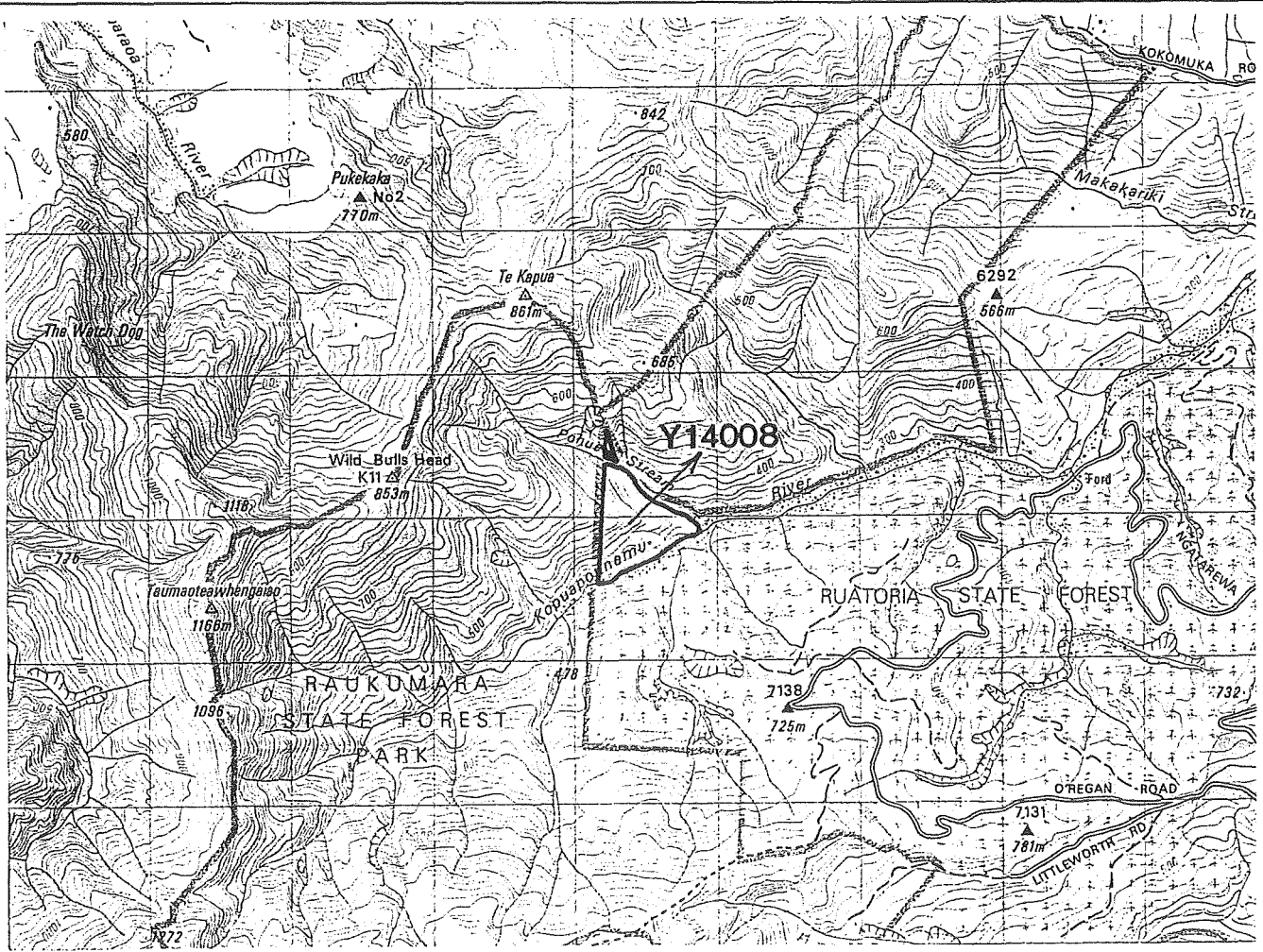


TOTAL AREA: 20.9480ha

0 500m

SCALE

Aerial Photography  
SN11485D A1 22.3.88



## KOPUAPOUNAMU CONSERVATION AREA

<b>Field Centre:</b>	Gisborne	<b>Inventory Ref:</b>	Y14008
<b>Local Authority:</b>	Gisborne DC	<b>File Ref:</b>	CTL004
<b>Sub Region:</b>	Raukumara	<b>Area (ha):</b>	20.9480
<b>Tangata Whenua:</b>	Ngati Porou	<b>CMP:</b>	No
<b>Legal Description:</b>	Lots 2 and 3, DP 8347, Block II, Mangaoparo SD.		
<b>General Description:</b>	Lowland forest and scrub.		

## NATURAL AND HISTORIC VALUES

Unknown

## THREATS TO NATURAL AND HISTORIC VALUES

Pests include: goats, possums, domestic stock, cats, buddleia, gorse.

## MANAGEMENT

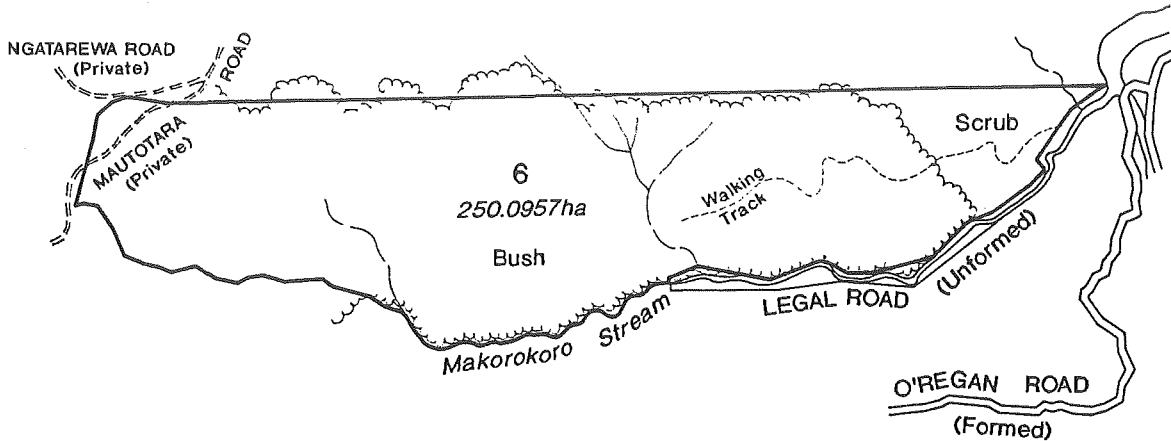
**Management Needs:** Some hunting opportunity; goat and possum control (moderate priority); plant pest control (moderate-high priority); archaeological survey; botanical and faunal survey.

**Management Objectives:** Primarily General Ecosystems Management (*s.3.3.12 refers*) subject to Ecological Information, Survey and Monitoring (*s.3.3.13 refers*). Problem Plants (*s.3.3.15 refers*), Problem Animals (*s.3.3.16 refers*), Recreation Opportunities (*s.3.4.2 refers*) and Historic Places (*s.3.3.7 refers*) also relevant.

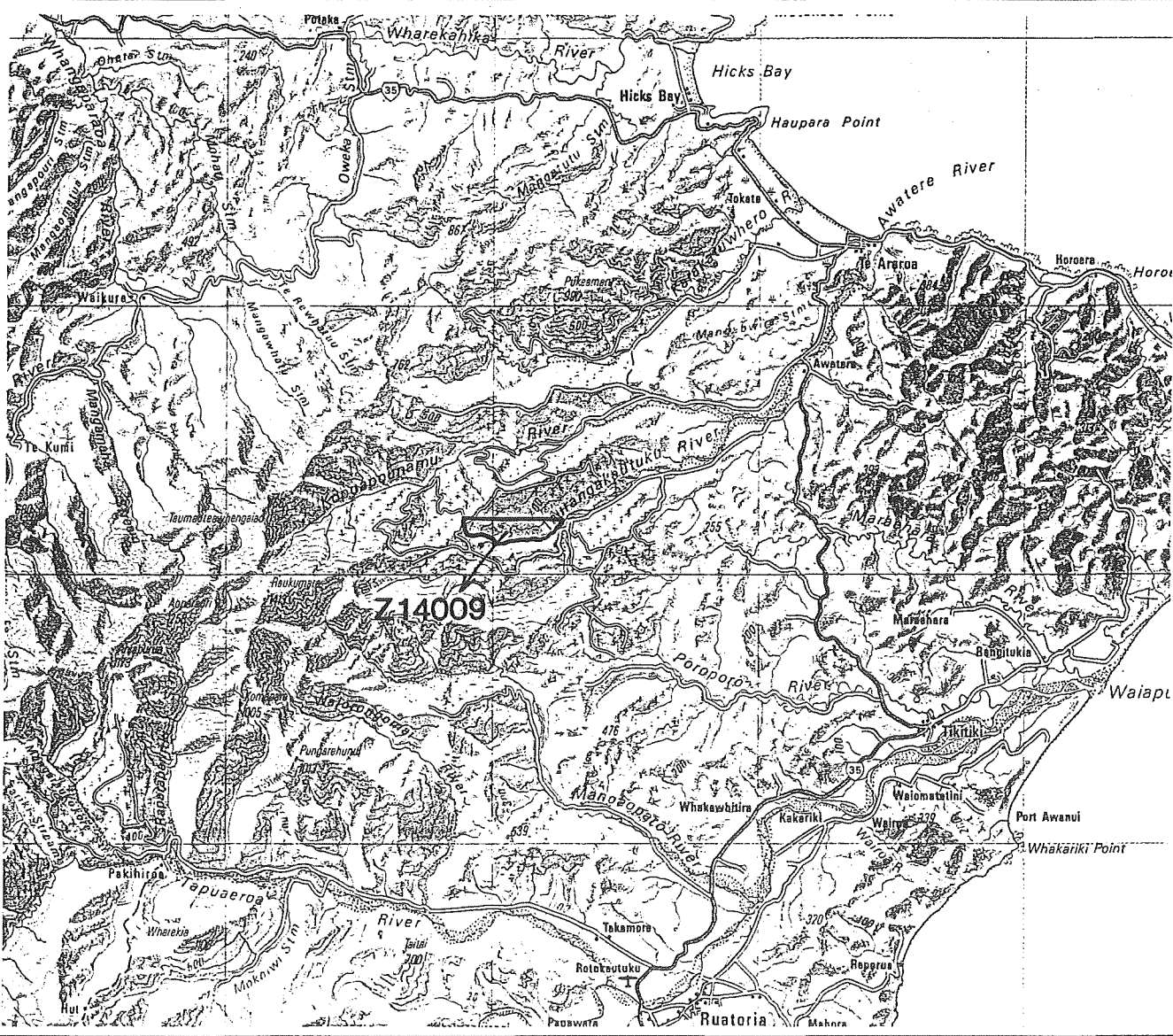
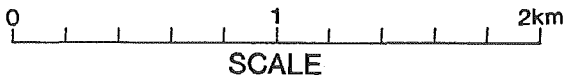
## REFERENCES

Brockie, R. 1993; Parkes, J. 1990

# LITTLEWORTHS CONSERVATION AREA (Z14009)



Aerial Photography  
SN 11485J F11 4.6.88





### LITTLEWORTH'S CONSERVATION AREA

<b>Field Centre:</b>	Gisborne	<b>Inventory Ref:</b>	Z14009
<b>Local Authority:</b>	Gisborne DC	<b>File Ref:</b>	CTL004
<b>Sub Region:</b>	Raukumara	<b>Area (ha):</b>	250.0957
<b>Tangata Whenua:</b>	Ngati Porou	<b>CMP:</b>	No
<b>Legal Description:</b>	Section 6, Block III, Mangaoparo SD.		
<b>General Description:</b>	Unknown		

### NATURAL AND HISTORIC VALUES

Botanical, historic and recreational values unknown.

Fauna include bats.

### THREATS TO NATURAL AND HISTORIC VALUES

Pests include: possums, pigs, deer, cats, domestic stock, wilding pines.

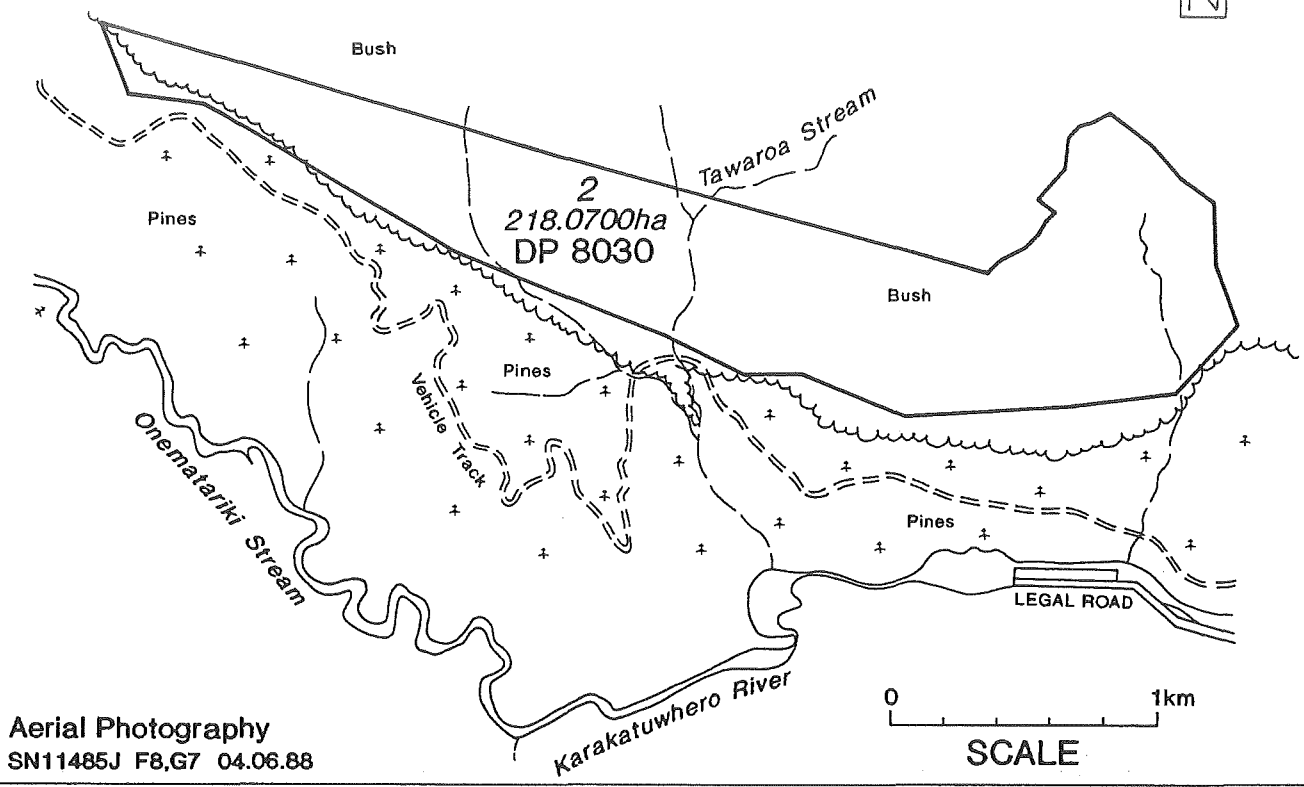
### MANAGEMENT

**Management Needs:** pest control; improve access; archaeological survey; consider inclusion in Raukumara Conservation Park; botanical and faunal survey.

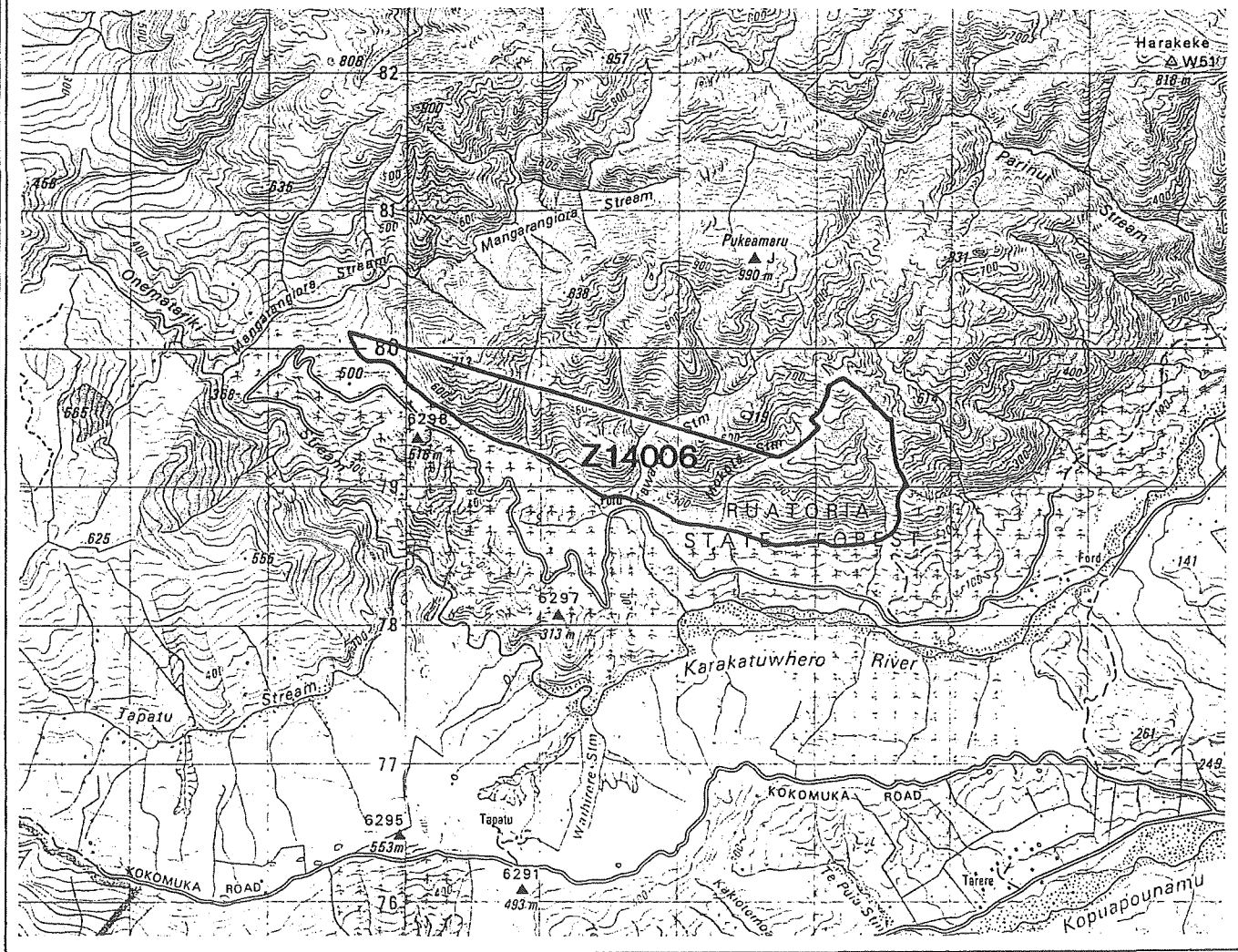
**Management Objectives:** Primarily General Ecosystems Management (*s.3.3.12 refers*) subject to Ecological Information, Survey and Monitoring (*s.3.3.13 refers*). Land Classification and Disposal (*s.3.3.2 refers*) and Historic Places (*s.3.3.7 refers*) also relevant.

### REFERENCES

# MULLANEY'S CONSERVATION AREA (Z14006)



Aerial Photography  
SN11485J F8,G7 04.06.88



PRODUCED BY DEPT. OF SURVEY & LAND INFORMATION, GISBORNE  
(Map Licence 1991/60/5)

## MULLANIES CONSERVATION AREA

<b>Field Centre:</b>	Gisborne	<b>Inventory Ref:</b>	Z14006
<b>Local Authority:</b>	Gisborne DC	<b>File Ref:</b>	RSN013
<b>Sub Region:</b>	Raukumara	<b>Area (ha):</b>	218.0700
<b>Tangata Whenua:</b>	Ngati Porou	<b>CMP:</b>	No
<b>Legal Description:</b>	Lot 2, DP 8030, Block XI, Matakaoa SD.		
<b>General Description:</b>	Lowland to sub-montane forest.		

## NATURAL AND HISTORIC VALUES

Lowland mixed tawa broadleaved forest; sub-montane tawari-kamahi-quintinia forest. Possible *Mazus pumilio* dwarf false musk). The reserve is steep and south-facing.

Fauna include: Hochstetter's frog, kaka, bats.

Recreational opportunities include hunting. The conservation area acts as a buffer between Pukeamaru Scenic Reserve and exotic planting.

## THREATS TO NATURAL AND HISTORIC VALUES

Pests include: goats, possums, domestic stock, cats, buddleia, gorse.

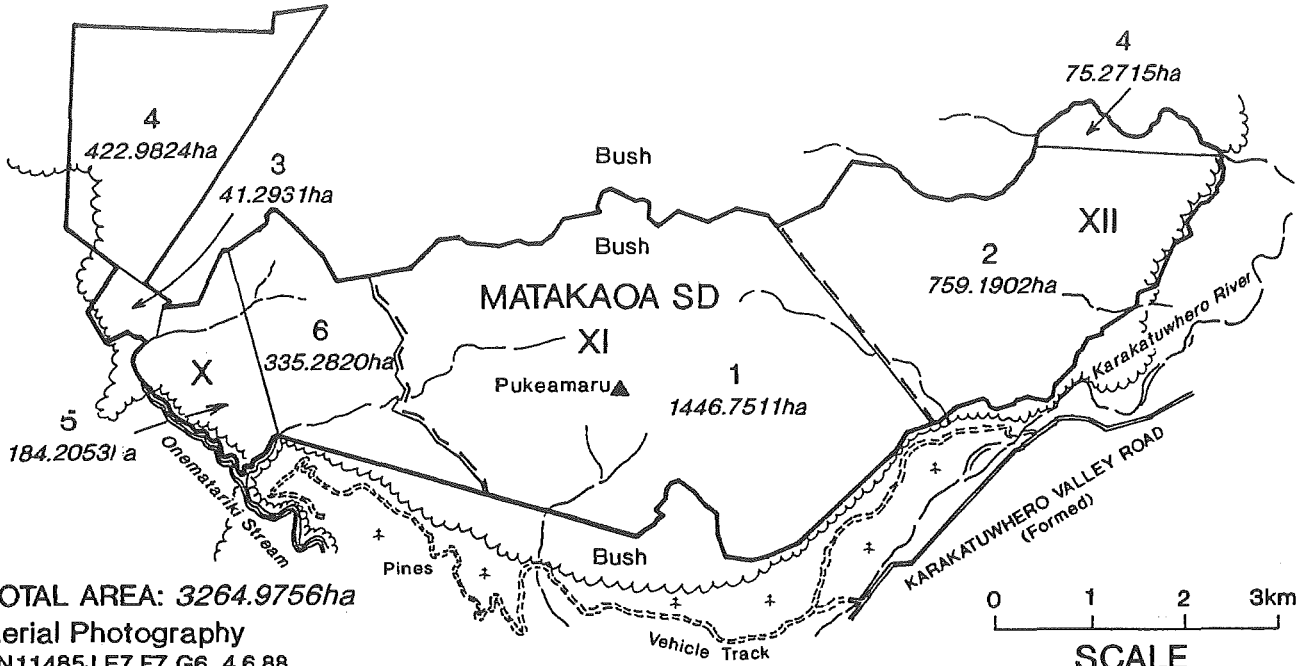
## MANAGEMENT

**Management Needs:** fencing inventory; possum and goat control (high priority); archaeological survey; *Mazus pumilio* management; possible land amalgamation (Pukeamaru Scenic Reserve).

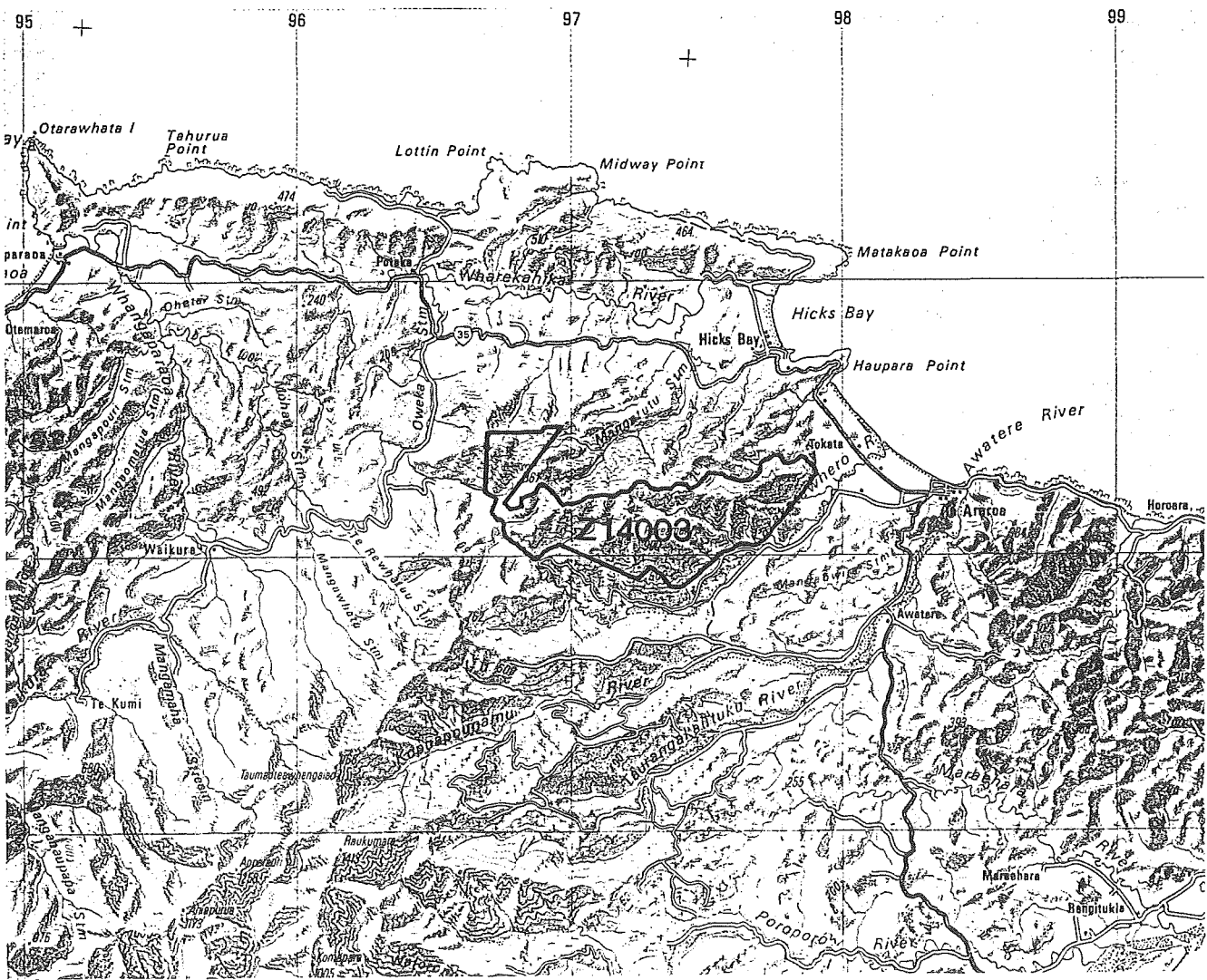
**Management Objectives:** Primarily General Species (*s.3.3.20 refers*), General Ecosystems Management (*s.3.3.12 refers*) and Threatened Species (*s.3.3.21 refers*). Problem Animals (*s.3.3.16 refers*), Problem Plants (*s.3.3.15 refers*), Land Classification and Disposal (*s.3.3.2 refers*), Historic Places (*s.3.3.7 refers*) and Recreation Opportunities (*s.3.4.2 refers*) also relevant.

## REFERENCES

# PUKEAMARU RANGE SCENIC RESERVE (Z14003)



TOTAL AREA: 3264.9756ha  
Aerial Photography  
SN11485J E7,F7,G6 4.6.88



## PUKEAMARU SCENIC RESERVE

<b>Field Centre:</b>	Gisborne	<b>Inventory Ref:</b>	Z14003
<b>Local Authority:</b>	Gisborne DC	<b>File Ref:</b>	RSN013
<b>Sub Region:</b>	Raukumara	<b>Area (ha):</b>	3264.9756
<b>Tangata Whenua:</b>	Ngati Porou	<b>CMP:</b>	No
<b>Legal Description:</b>	Sections 3-5 and 6, Block X, Section 1, Block XI and Sections 2 and 4, Block XII, Matakaoa SD.		
<b>General Description:</b>	Semi-coastal to montane forest, bluffs.		

## NATURAL AND HISTORIC VALUES

Semi-coastal tawaroa/kohekohe forest; lowland scrub, scrubland, pasture, hard beech forest; sub-montane kamahi-tawari forest; montane silver beech-kamahi-tawari-quintinia forest with yellow and silver pine forest. 'Exceptional' botanical conservation value (Shaw 1988).

Fauna include possible Hochstetters frog, common bush birds (whitehead, rifleman, pied tit, also kereru) with wading birds in river area. 'High' SSWI ranking (Rasch 1989).

The reserve has high cultural significance and there are many unrecorded archaeological sites there. Part of Hungahungatoroa Pa (Z14/91) is also in the reserve.

There is potential (in the long term) for the establishment of interpretive material and development of Summer Visitor Programmes in the area.

## THREATS TO NATURAL AND HISTORIC VALUES

Pests include: goats, possums, cats, mustelids, domestic stock, buddleia, wilding pines, gorse.

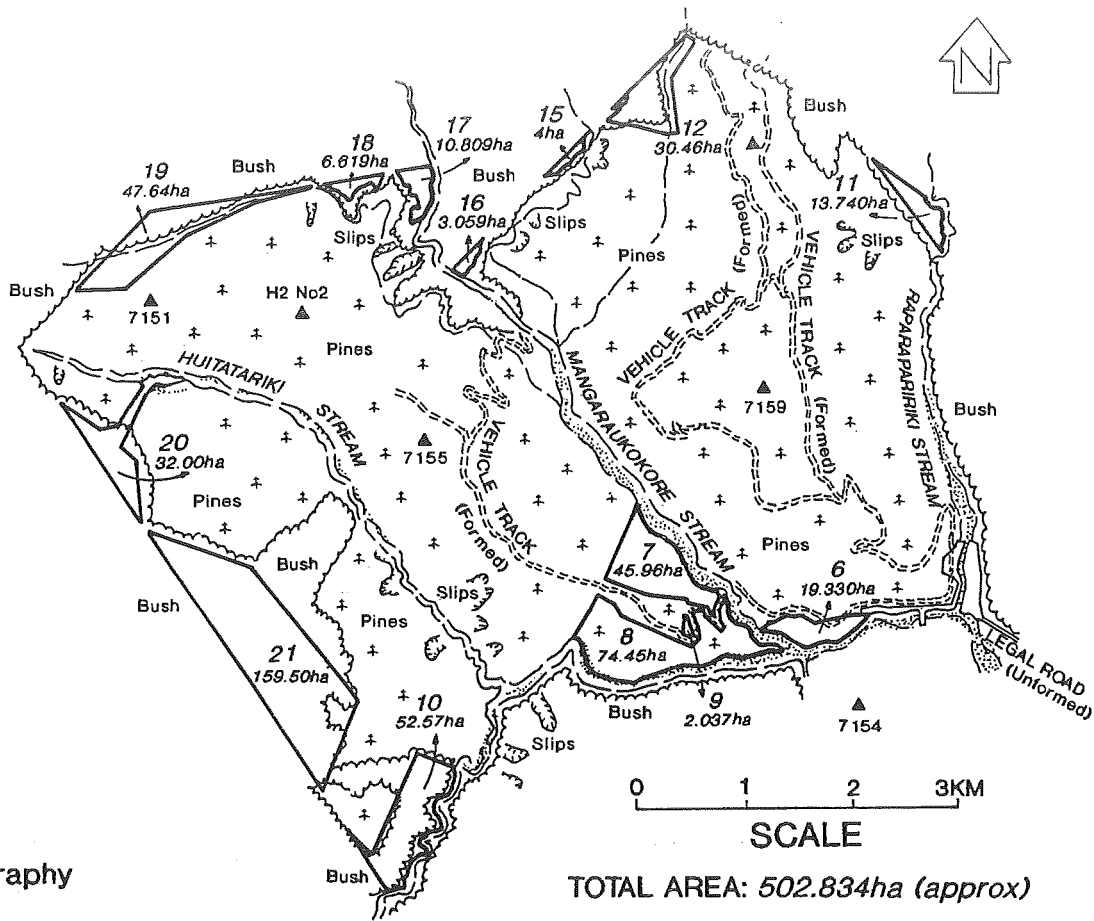
## MANAGEMENT

**Management Needs:** pest control (goat and possum are high priority); conservation values; archaeological survey.

**Management Objectives:** Primarily General Species (*s.3.3.20 refers*), General Ecosystems Management (*s.3.3.12 refers*), Historic Places (*s.3.3.7 refers*) and Threatened Species (*s.3.3.21 refers*). Problem Plants (*s.3.3.15 refers*), Problem Animals (*s.3.3.16 refers*) and Recreation Opportunities (*s.3.4.2 refers*) also relevant.

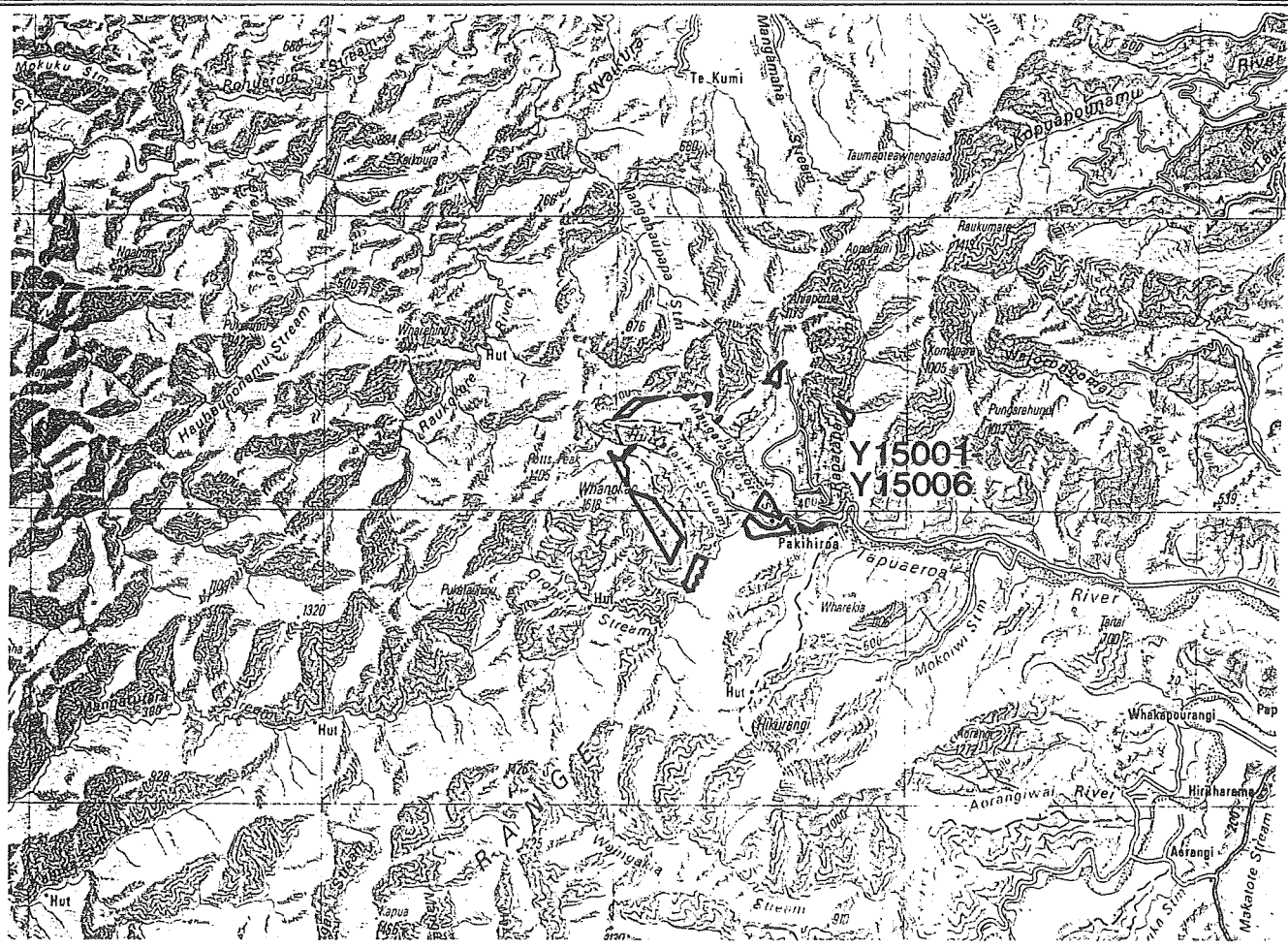
## REFERENCES

# RAPARAPARIRIKI CONSERVATION AREA (Y15001-006)



Aerial Photography  
SN 5012 1977

TOTAL AREA: 502.834ha (approx)



## RAPARAPARIRIKI CONSERVATION AREA

<b>Field Centre:</b>	Gisborne	<b>Inventory Ref:</b>	Y 1 5 0 0 1 - Y15006
<b>Local Authority:</b>	Gisborne DC	<b>File Ref:</b>	CTL004
<b>Sub Region:</b>	Raukumara	<b>Area (ha):</b>	502.8340
<b>Tangata Whenua:</b>	Ngati Porou	<b>CMP:</b>	No
<b>Legal Description:</b>	Lots 2-4, 8, 14-22, 32 & 33, 8 Lot 8200.		
<b>General Description:</b>	Unknown		

## NATURAL AND HISTORIC VALUES

Unknown

## THREATS TO NATURAL AND HISTORIC VALUES

Pests include: possums, pigs, deer, stock, cats, buddleia, gorse.  
Some hunting opportunities.

## MANAGEMENT

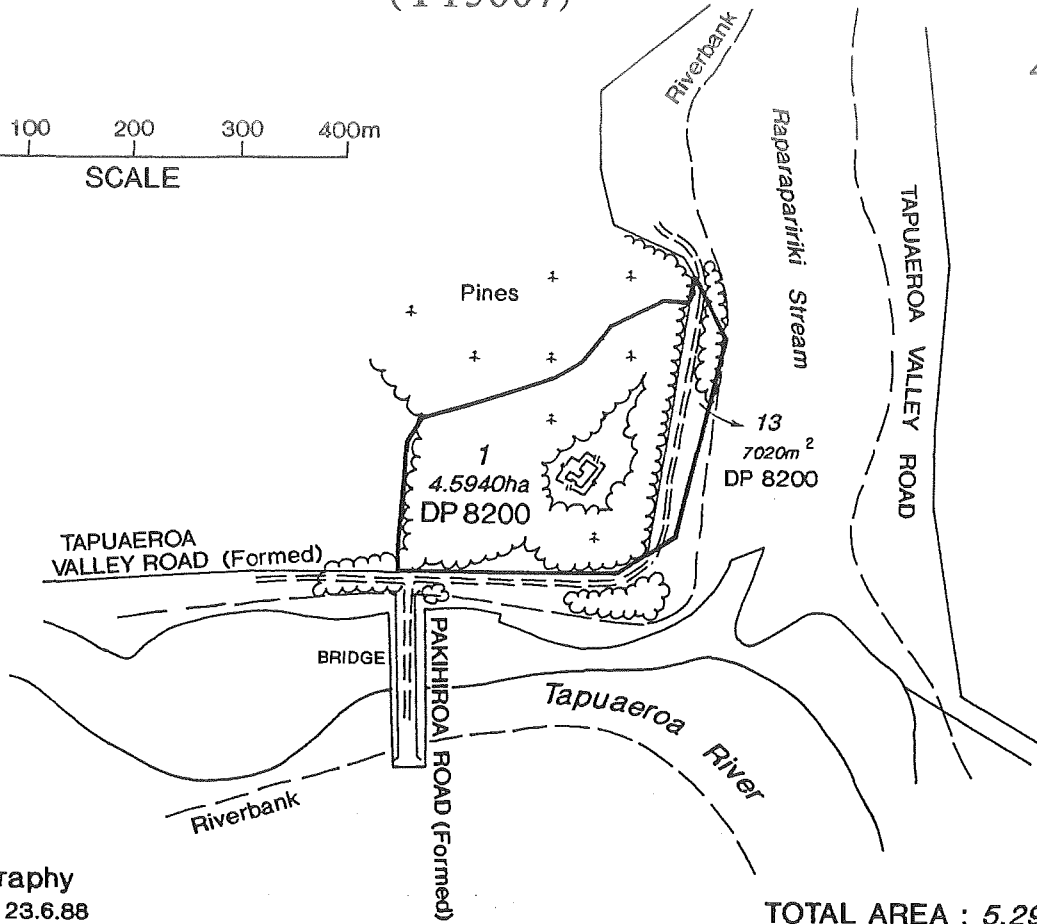
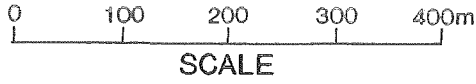
**Management Needs:** fencing; goat, possum and plant pest control (high priority) investigate possible wahi tapu; botanical and faunal survey.

**Management Objectives:** Primarily General Ecosystems Management (*s.3.3.12 refers*) subject to Ecological Information, Survey and Monitoring (*s.3.3.13 refers*). Historic Places (*s.3.3.7 refers*), Problem Plants (*s.3.3.15 refers*), Problem Animals (*s.3.3.16 refers*), Recreation Opportunities (*s.3.4.2 refers*) and Resolution of Treaty Claims (*s.3.2.3 refers*) also relevant.

## REFERENCES

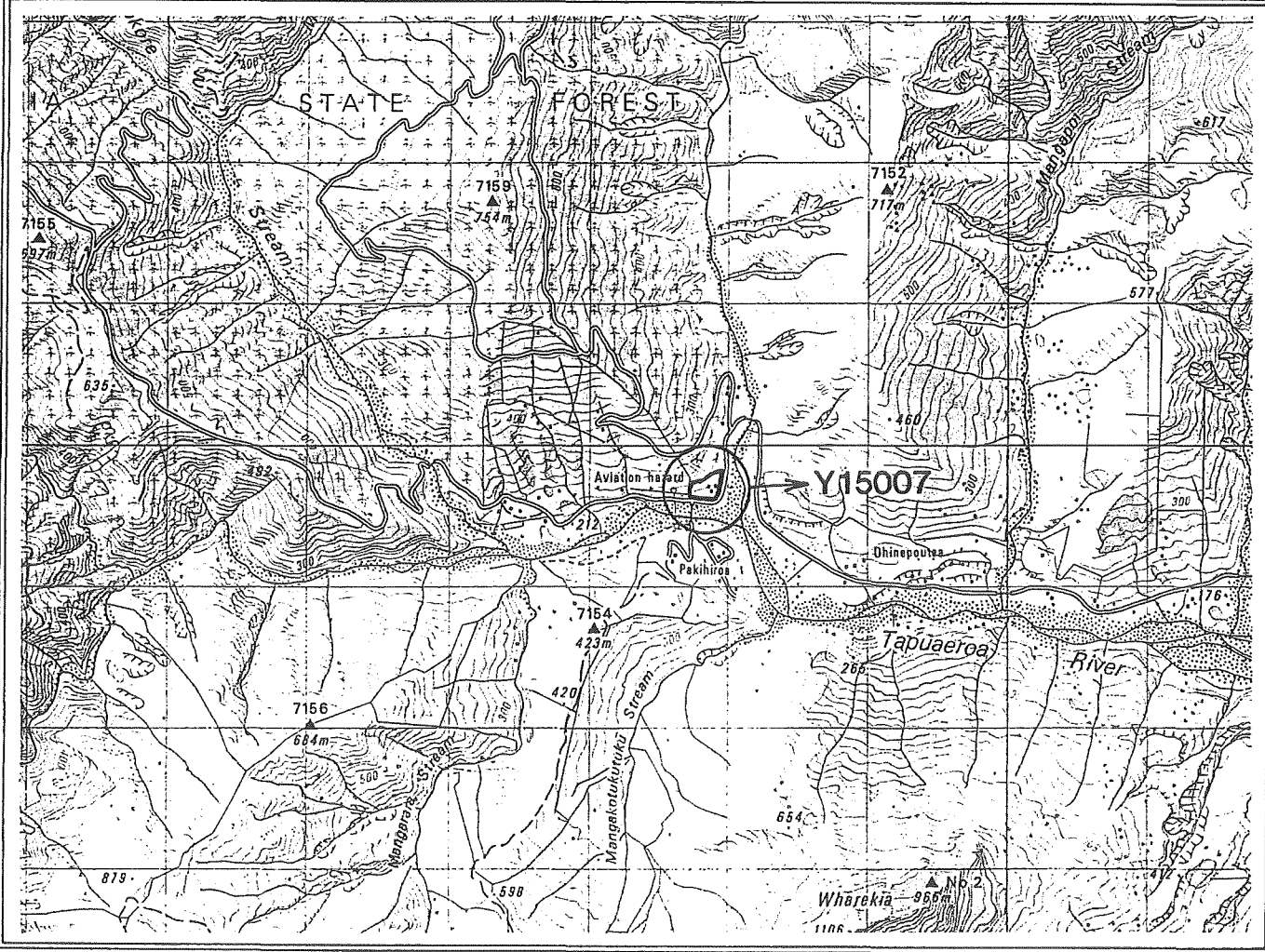
Brockie, R. 1993; Parkes, J. 1990

# RAPARAPARIRIKI CONSERVATION AREA (Y15007)



Aerial Photography  
SN 11485J C16 23.6.88

TOTAL AREA : 5.2960ha





### RAPARAPARIRIKI CONSERVATION AREA

Field Centre:	Gisborne	Inventory Ref:	Y15007
Local Authority:	Gisborne DC	File Ref:	BDG004
Sub Region:	Raukumara	Area (ha):	4.5940
Tangata Whenua:	Ngati Porou	CMP:	No
Legal Description:	Lots 1 & 13, DP 8200, Block XII, Raukumara East SD.		
General Description:	Recreation.		

### NATURAL AND HISTORIC VALUES

Historic homestead built in 1916 by O. T. Williams. The homestead is used for recreational purposes by youth groups, school groups and individuals. Recreational opportunities include: tramping (to Hikurangi), hunting, camping.

### THREATS TO NATURAL AND HISTORIC VALUES

Pests include: rats, cats. Moderate-high visitor pressure from logging teams.

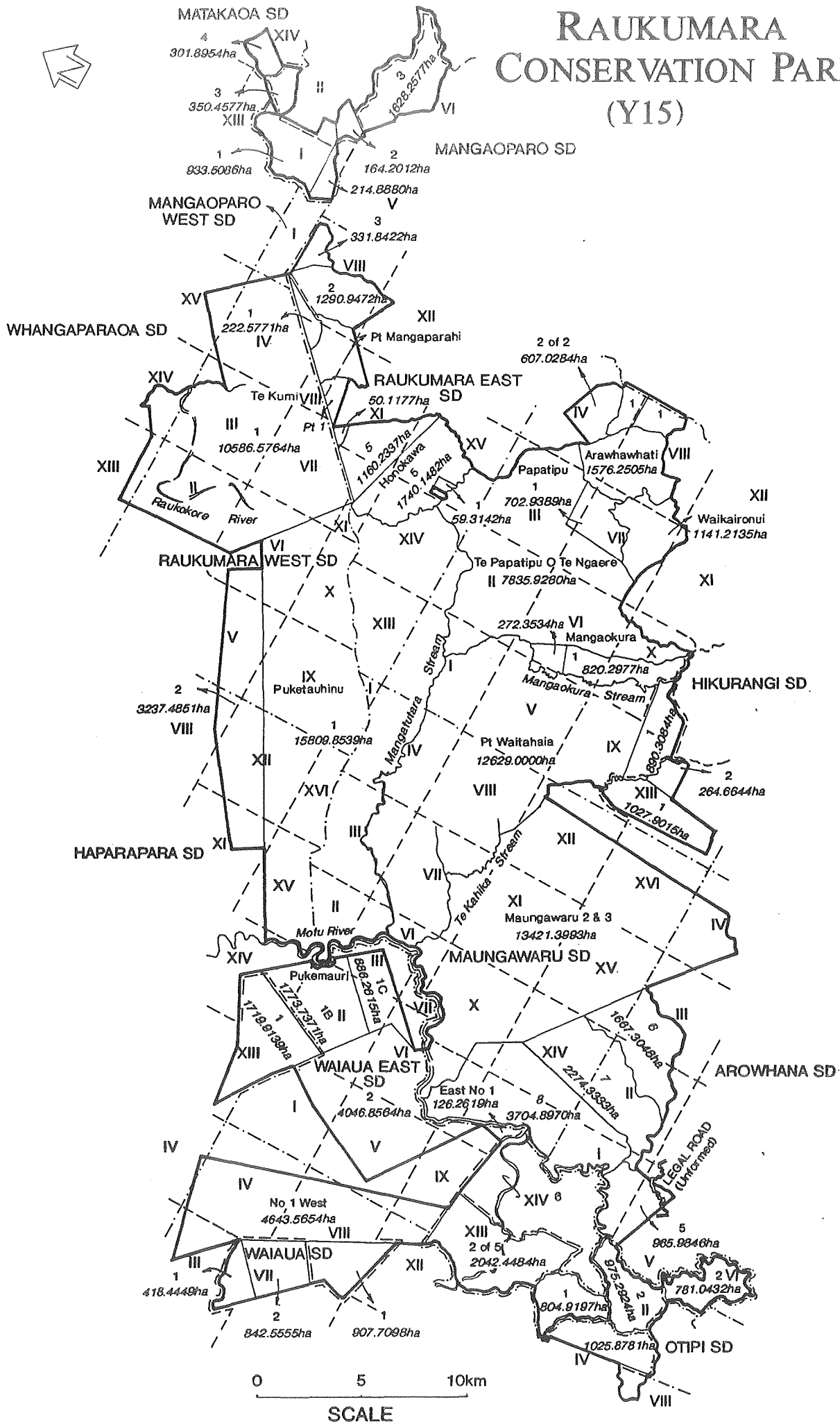
### MANAGEMENT

**Management Needs:** homestead and facilities maintenance; fencing; revestment; assess homestead for historic value; interpretation.

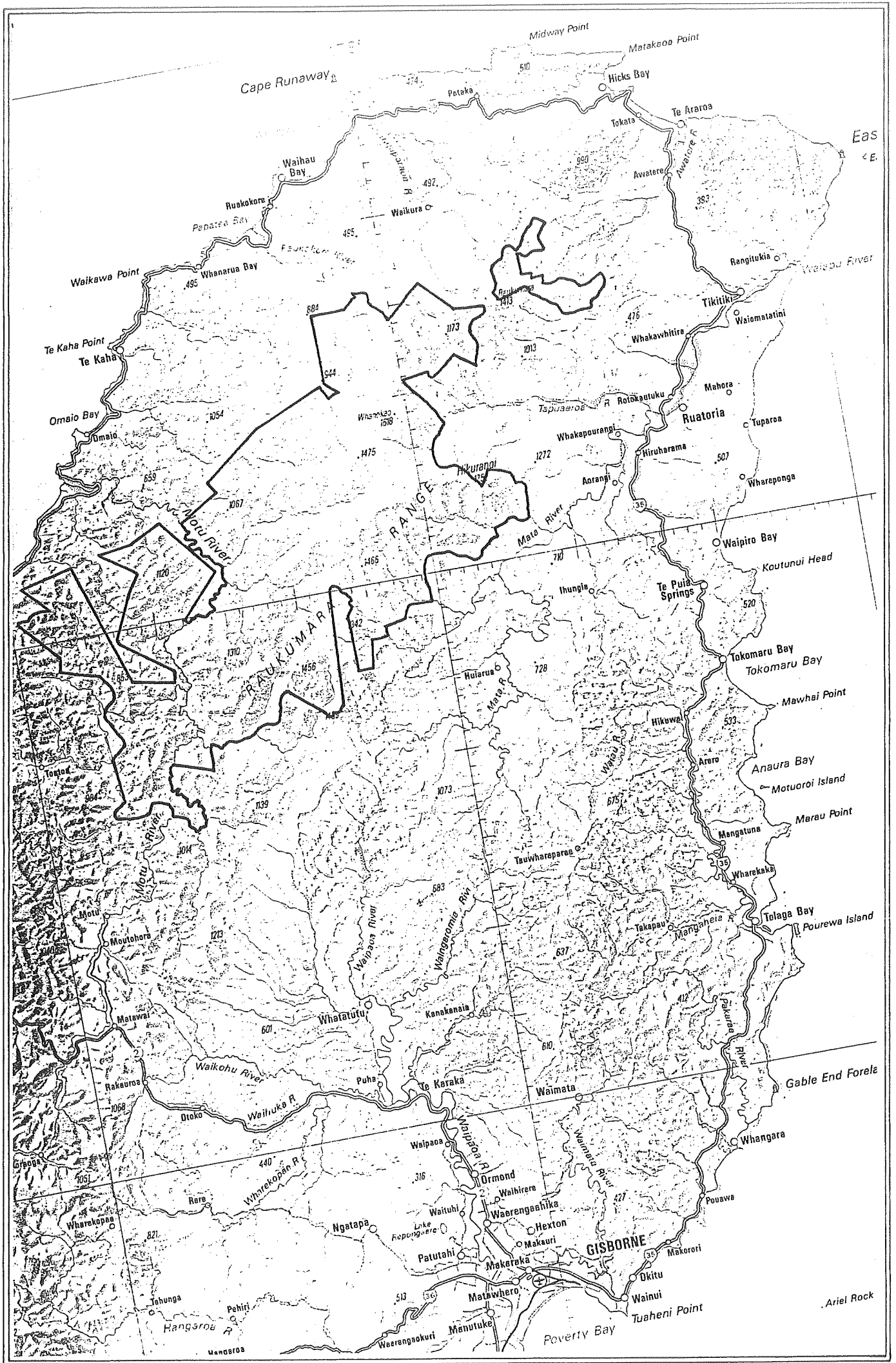
**Management Objectives:** Primarily Historic Places (*s. 3.3.7 refers*) subject to Resolution of Treaty Claims (*s. 3.2.3 refers*).

### REFERENCES

# RAUKUMARA CONSERVATION PARK (Y15)



PRODUCED BY DEPT. OF SURVEY & LAND INFORMATION, GISBORNE  
(Map Licence 1991/6015)



PRODUCED BY DEPT. OF SURVEY & LAND INFORMATION, GISBORNE

## RAUKUMARA CONSERVATION PARK

<b>Field Centre:</b>	Opotiki/Gisborne	<b>Inventory Ref:</b>	Y15
<b>Local Authority:</b>	Gisborne DC, Opotiki DC	<b>File Ref:</b>	CSF100
<b>Sub Region:</b>	Raukumara	<b>Area (ha):</b>	115353.0
<b>Tangata Whenua:</b>	Ngati Porou, Whanau-o-Apanui, Ngai Tai.	<b>CMP:</b>	exp. 1993
<b>Legal Description:</b>	Appended.		
<b>General Description:</b>	Semi-coastal to alpine forest, Wilderness area, History.		

## NATURAL AND HISTORIC VALUES

Semi-coastal podocarp-broadleaved forest with rimu, rata, tawa, hinau, rewarewa, kamahi, pukatea, kohekohe, miro, tanekaha, hard beech, kamahi. Lowland forest also has kahikatea, Hall's totara, toatoa and beech hybrids. Sub-montane-montane forest includes silver beech, kaikawaka and pink pine. Sub-alpine areas have predominant silver beech and scrub. Alpine vegetation includes: fell-field, herbfield, tussockland (restricted to Maunga Hikurangi and Whanokao). 'Very High-Exceptional' botanical conservation value (Shaw 1988). Maunga Hikurangi (indurated sandstone peak) and the Raukumara uplifted 'penepplain' (eroded plateau) are landscapes of national significance (Kenny and Hayward 1993). The highly scenic Motu River flows through the park and it also contains Lake Mangatutara (a significant wetland). There are a number of bogs of ecological importance at Maungawaru.

Fauna include: (rare) kokako, whio, kaka, brown kiwi, red and yellow crown parakeet, falcon, native snail, eels, kokopu, native bat, Hochstetter's frog, possible piopio (presumed extinct) and common bush birds. 'Outstanding' SSWI ranking (Rasch 1989).

Recorded historic places include: Whiorau pa (X15/157) and an occupation site (X15/233). There are a number of designated ecological areas within the area including: Hikurangi E.A., Whanakoa E.A., and Raukokore E.A. There are historic tracks (such as the Whanakao warpath) Scott's Selection (farm) and a copper mine (Shaw 1993). The area has high cultural significance (particularly Hikurangi) and a national recreational significance as the only North Island wilderness area.

Recreational opportunities include: rafting, kayaking (Motu River), tramping (Maunga Hikurangi), hunting (helicopter access for pig and deer), mountain biking (on adjacent Otipi Road), horse trekking (Oronui-Mangatutara). Recreational facilities include: Oronui hut, Mangakirikiri hut, Mangatutara hut, Macmillan's hut, signage.

## THREATS TO NATURAL AND HISTORIC VALUES

Pests include: goats, red deer, wild cattle, pigs, possums, cats, mustelids, domestic stock, buddleia, pampas, willow, gorse, old man's beard. There is a low-moderate visitor pressure. Other threats include: rubbish from hunters and rafting parties, hydroelectric development on the Motu River, fire, unlicensed helicopter activities, unauthorised camping, dam proposal on Motu River.

## MANAGEMENT

**Management Needs:** Fencing; access; eeling; monitor commercial activities (jetboating concessions, helicopter hunting concessions, fishing and hunting guiding concessions); visitor

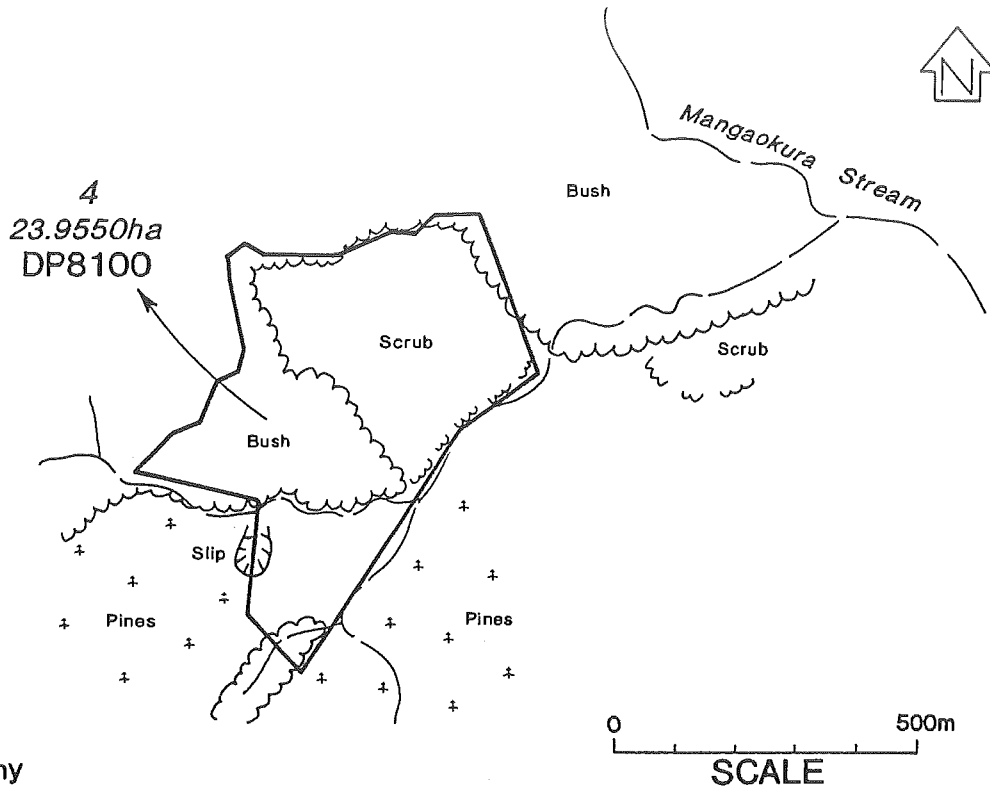
impacts; archaeological survey; pest control (goat high priority, possum moderate-high priority, plant pest control); signage.

**Management Objectives:** Primarily General Ecosystems Management (*s.3.3.12 refers*), General Species Management (*s.3.3.20 refers*), Threatened Species (*s.3.3.21 refers*) and Historic Places (*s.3.3.7 refers*). Recreation Opportunities (*s.3.4.2 refers*), Recreation and Tourism Concessions (*s.3.4.6 refers*), Recreation Impact Management (*s.3.4.5 refers*), Recreation Facilities (*s.3.4.4 refers*), Problem Plants (*s.3.3.15 refers*), Problems Animals (*s.3.3.16 refers*), Compliance (*s.3.3.4 refers*), Landscape (*s.3.3.6 refers*) and Freshwater Fish (*s.3.3.27 refers*) also relevant.

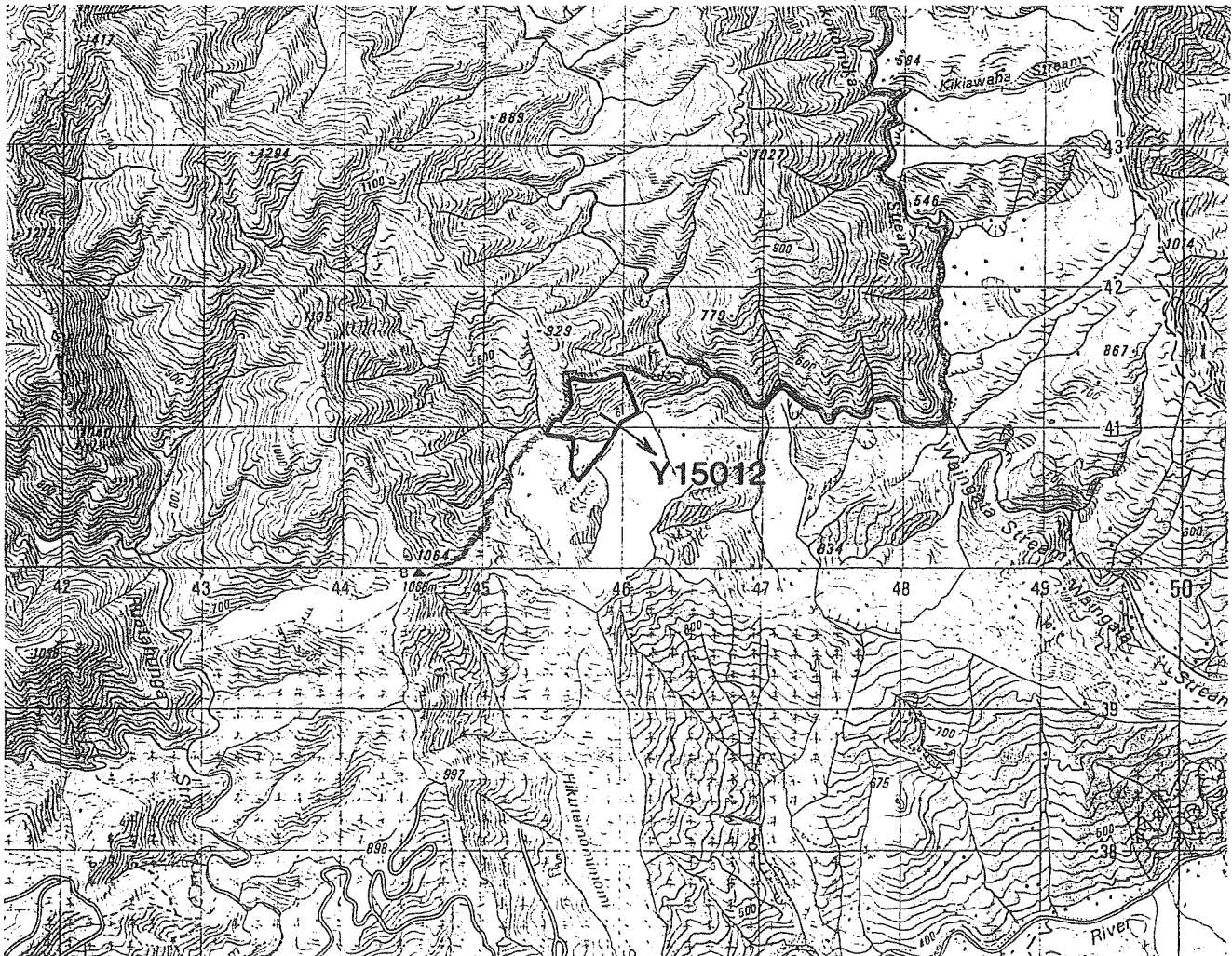
**Legal Description:** Section 4, Block XIV, Matakaoa SD. Section 3, Block II, Mangaoparo SD. Section 1, Block I, Mangaoparo SD. Section 2, Block I, Mangaoparo SD. Part Section 1, Block II, Mangaoparo SD. Section 2, Block II, Mangaoparo SD. Section 5, Block II, Mangaoparo SD. Section 3, Block VI, Mangaoparo SD. Te Kumi Block, Blocks XIII, XIV, XV, Whangaparaoa SD, Blocks II-IV, VI-VIII & XI, Raukumara West SD, Mangaoparo West SD. Section 1, Block VII, Raukumara East SD. Raparapaririki No. 3 Block, Block VIII, Raukumara East Survey District. Part Raparapaririki No. 2 Block, Blocks VIII, XII, Raukumara East SD. Part Maungaparahi Block, Blocks VII, VIII, XI, XII, Raukumara East SD. Part Lot 1, DP 2663, Blocks VII, XI, Raukumara East SD. Part Lot 5, DP 2664, Blocks X, XI, XV, Raukumara East SD. Part Honokawa No. 5 Block, Blocks X, XI, XIV, XV, Raukumara East SD. Section 1, Block XV, Raukumara East SD. Te Papatipu-o-Te Ngaere, Blocks XIV, XV, Raukumara East SD, I-IV, VI, VII, X, Hikurangi SD. Arawhahati Block, Blocks III, IV, VII, VIII Hikurangi Survey District. Papatipu No. 1 Block Blocks III, VII, Hikurangi SD. Whakaironui Block, Blocks VII, VIII, XI, Hikurangi SD. Lot 2 of Section 2, Block IV, Hikurangi SD. Section 1, Blocks IV, VIII, Hikurangi SD. Section 3, Blocks I, V, Mata SD. Mangaokura No. 1 Block, Blocks VI, X, Hikurangi SD. Part Mangaokura Block, Blocks V, VI, Hikurangi SD. Section 1, Block IX, Hikurangi SD. Section 1, Block XIII, Hikurangi SD. Section 2, Block XIII, Hikurangi SD. Part Waitahaia Block, Blocks III, IV, VI, VII, VIII, XII, Maungawaru SD, I, II, V, VI, IX, X, Hikurangi SD. Puketauhinu No. 1 Block, Blocks V, VI, VII, IX, X, XI, Raukumara West SD, XIII, XIV, Raukumara East SD, XI, XII, XIV, XV, XVI, Haparapara SD, I, II, III, IV, VI, VII, Maungawaru SD, I, Hikurangi SD. Puketauhinu No. 2 Block, Blocks V, VI, IX, Raukumara West SD, VIII, XI, XII, Haparapara SD. Puketauhinu No. 1B Block, Blocks VI, VII, X, XI, Raukumara West SD, X, XIV, Raukumara East SD, I, II, Hikurangi SD. Maungawaru No. 2 and 3 Block, Blocks VI-XII & XIV-XVI, Maungawaru SD. Arowhana SD. Lot 8, DP 2480, Blocks IX, X, XIII, XIV, Maungawaru SD, I, II, Arowhana SD. Lot 7, DP 2479, Blocks XIV, XV, Maungawaru SD, I, II, Arowhana SD. Lot 6, DP 2479, Blocks XIV, XV, Maungawaru SD, II, III, Arowhana SD. Lot 5, DP 2481, Blocks I, V, Arowhana SD. Section 2, Block VI, Otipi SD. Section 2, Block II, Otipi SD. Section 1, Block II, Otipi SD. Section 6, Block IV, Urutawa SD. Section 7, Block VIII, Urutawa SD. Section 6, Block XIV, Waiaua East SD. Lot 2, of Section 5, Block XIII, Waiaua East SD. Kapuarangi No. 1 East No. 1 Block, Block X, Waiaua East SD. Kapuarangi No. 1 West Block, Blocks IV, Tokata SD, III, IV, VIII, XII, Waiaua SD, V, IX, Waiaua East SD. Section 1, Block VIII, Waiaua SD. Section 2, Block VII, Waiaua SD. Section 1, Block VII, Waiaua SD. Kapuarangi No. 2 Block, Blocks I, II, V, VI, IX, X, Waiaua East SD. Pukemauri No. 1B Block, Blocks I, III, Waiaua East SD, XIV, Haparapara SD. Pukemauri No. 1C, Blocks II, III, VI, VII, Waiaua East SD. Section 1, Block XIII, Haparapara SD.

## REFERENCES

# TOKOMARU CONSERVATION AREA (Y15012)



Aerial Photography  
SN11485J AA24 23.06.88



TOKOMARU CONSERVATION AREA
----------------------------

<b>Field Centre:</b>	Gisborne	<b>Inventory Ref:</b>	Y15012
<b>Local Authority:</b>	Gisborne DC	<b>File Ref:</b>	CVE204
<b>Sub Region:</b>	Raukumara	<b>Area (ha):</b>	23.9550
<b>Tangata Whenua:</b>	Ngati Porou	<b>CMP:</b>	No
<b>Legal Description:</b>	Lot 4, DP 8100, Block XIV, Hikurangi SD.		
<b>General Description:</b>	Forest and scrub.		

NATURAL AND HISTORIC VALUES
-----------------------------

Unknown (Totara stand).  
Recreational opportunities include : hunting.

THREATS TO NATURAL AND HISTORIC VALUES
--

Pests include: possums, domestic stock.

MANAGEMENT
------------

**Management Needs:** fencing; (stock exclusion); revegetation; botanical and faunal survey.

**Management Objectives:** Primarily General Ecosystems Management (*s.3.3.12 refers*) subject to Ecological Information, Survey and Monitoring (*s.3.3.13 refers*). Ecological Restoration (*s.3.3.19 refers*), Problem Animals (*s.3.3.16 refers*) and Recreation Opportunities (*s.3.4.2 refers*) also relevant.

REFERENCES
------------

