

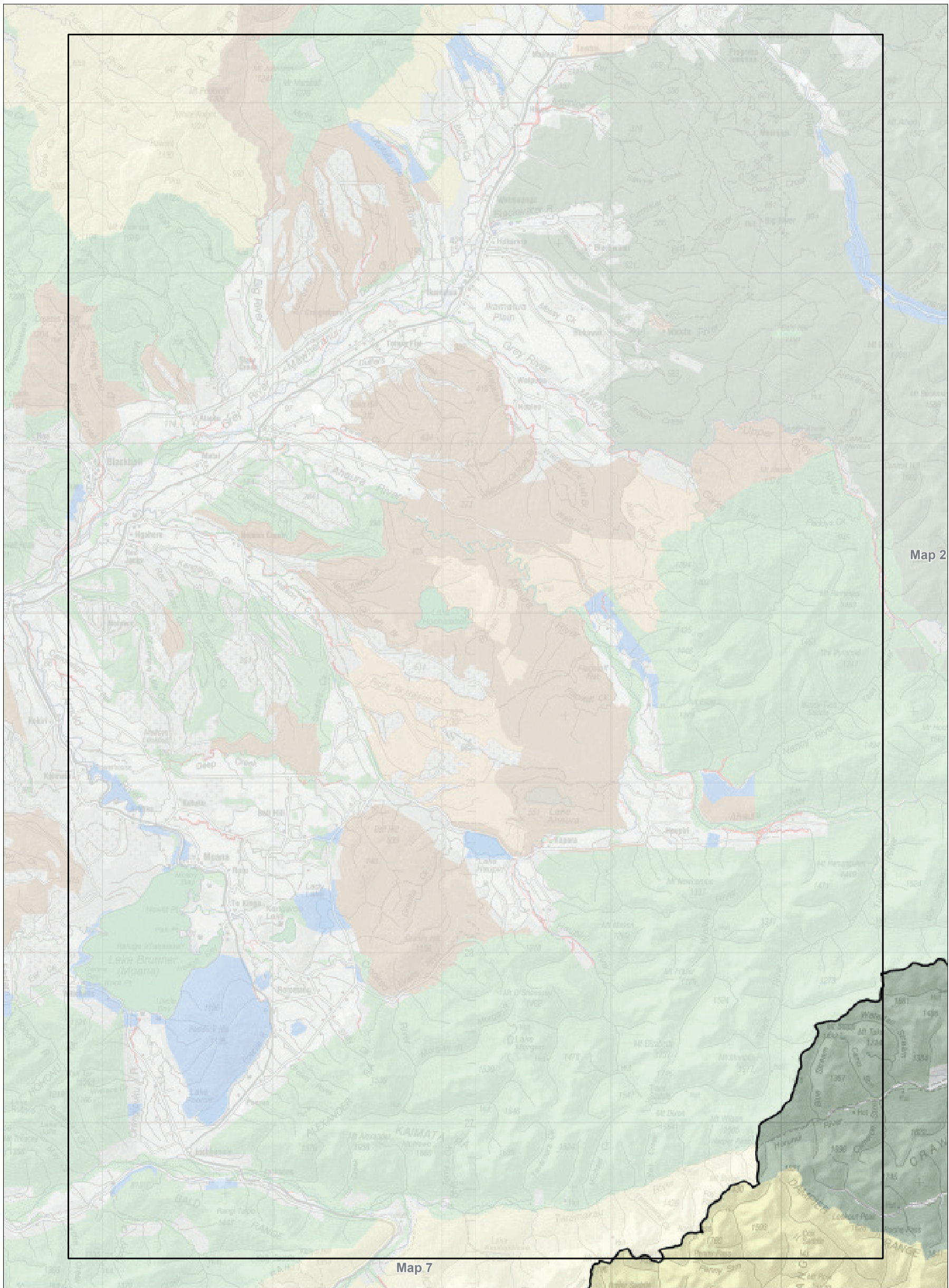
Map 6 Detail maps index
 Conservation Management Strategy
 Canterbury

0 5 10 20 30 40
 Km



Inventory of public conservation land and waters
Canterbury
Map table 7.1

NaPALIS ID	Protected Area Name	Area (ha)	Legal Description
NO RECORD	NO RECORD		NO RECORD

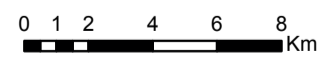


Map 7.1 Inventory of public conservation land and waters

Conservation Management Strategy
 Canterbury (Waitaha)

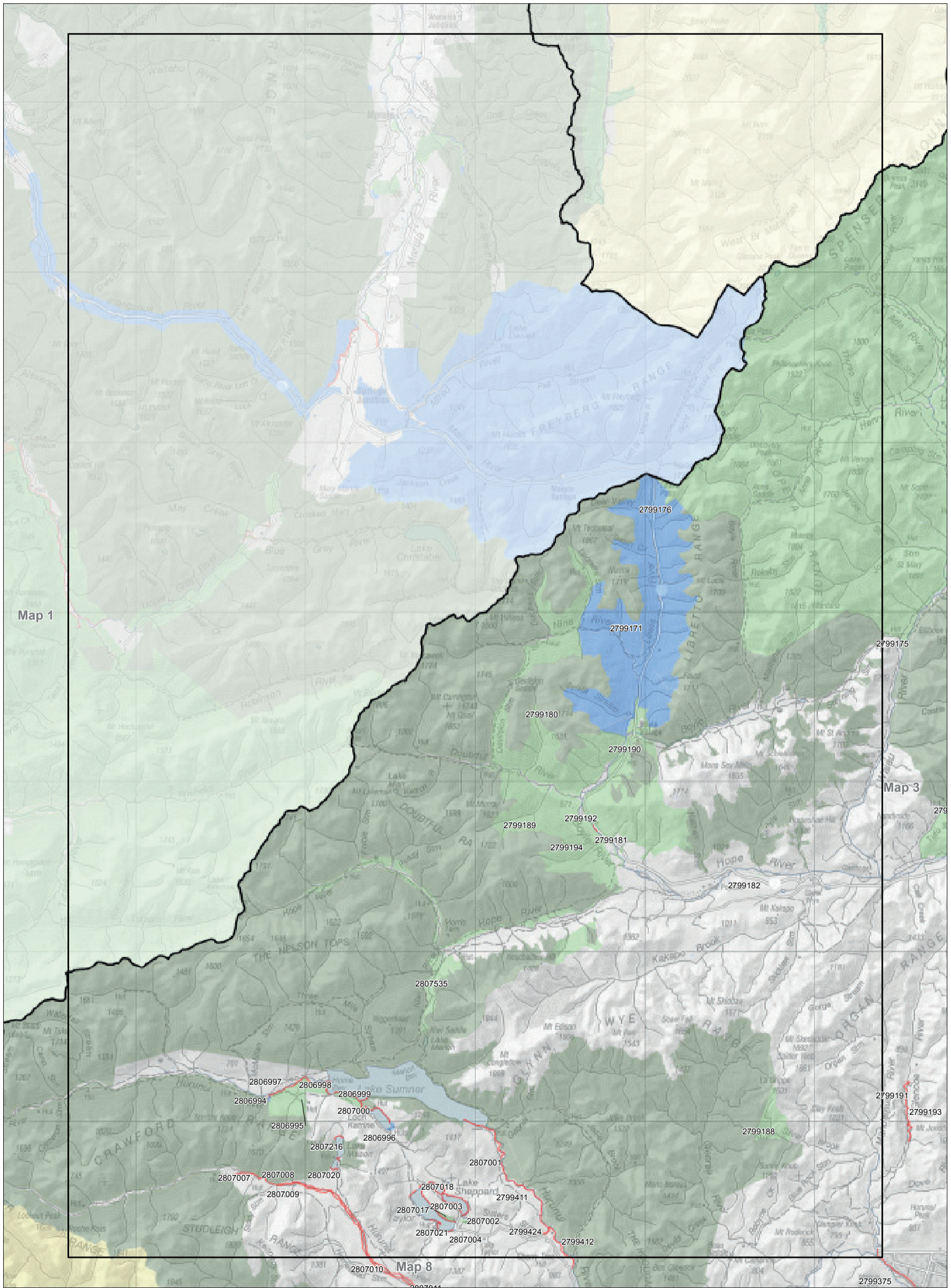
Map 1 of 23

Conservation unit data is current as of 31/10/2015



Inventory of public conservation land and waters
 Canterbury
 Map table 7.2

NaPALIS ID	Protected Area Name	Area (ha)	Legal Description
2799171	Lewis Pass Scenic Reserve	6035.26	Scenic Reserve - s.19(1)(a) Reserves Act 1977
2799176	Conservation Area Lewis Pass	20.64	Stewardship Area - s.25 Conservation Act 1987
2799180	Conservation Area Nina Doubtful Rivers	3012.49	Stewardship Area - s.25 Conservation Act 1987
2799181	Conservation Area Boyle River Engineers Camp	0.08	Stewardship Area - s.25 Conservation Act 1987
2799182	Conservation Area Hope Riverbed east of Bridge	2.48	Stewardship Area - s.25 Conservation Act 1987
2799188	Conservation Area Island Hills	344.20	Stewardship Area - s.25 Conservation Act 1987
2799189	Lower Doubtful/Boyle River Conservation Area	1555.52	Stewardship Area - s.25 Conservation Act 1987
2799190	Conservation Area Boyle Village	0.06	Stewardship Area - s.25 Conservation Act 1987
2799192	Boyle River Marginal Strip	0.24	Fixed Marginal Strip - s.24(3) Conservation Act 1987
2799194	The Poplars Conservation Area	4269.14	Stewardship Area - s.25 Conservation Act 1987
2799411	Hurunui River Marginal Strip	4.30	Fixed Marginal Strip - s.24(3) Conservation Act 1987
2799412	Hurunui River Marginal Strip	9.08	Fixed Marginal Strip - s.24(3) Conservation Act 1987
2799424	Sisters Stream Marginal Strip	2.42	Moveable Marginal Strip - s.24(1) & (2) Conservation Act 1987
2806994	Camp Site Reserve No 2 Hut	4.49	Local Purpose Reserve - s.23 Reserves Act 1977
2806995	Conservation Area Head of Lake Sumner	512.16	Stewardship Area - s.25 Conservation Act 1987
2806996	Loch Katrine Recreation Reserve	11.07	Recreation Reserve - s.17 Reserves Act 1977
2806997	Hurunui River Marginal Strip	2.28	Fixed Marginal Strip - s.24(3) Conservation Act 1987
2806998	Hurunui River Marginal Strip	3.00	Fixed Marginal Strip - s.24(3) Conservation Act 1987
2806999	Lake Sumner Marginal Strip	9.75	Fixed Marginal Strip - s.24(3) Conservation Act 1987
2807000	Loch Katrine Marginal Strip	6.90	Fixed Marginal Strip - s.24(3) Conservation Act 1987
2807001	Lake Sumner Marginal Strip	14.68	Fixed Marginal Strip - s.24(3) Conservation Act 1987
2807002	Raupo Pond Conservation Area	10.97	Stewardship Area - s.25 Conservation Act 1987
2807003	Conservation Area Lake Taylor	23.13	Stewardship Area - s.25 Conservation Act 1987
2807004	Camp Site Reserve Lake Taylor	1.02	Local Purpose Reserve - s.23 Reserves Act 1977
2807007	Hurunui River Marginal Strip	4.43	Fixed Marginal Strip - s.24(3) Conservation Act 1987
2807008	Hurunui River Marginal Strip	5.19	Fixed Marginal Strip - s.24(3) Conservation Act 1987
2807009	Hurunui River Marginal Strip	4.05	Fixed Marginal Strip - s.24(3) Conservation Act 1987
2807017	Lake Taylor Marginal Strip	11.26	Fixed Marginal Strip - s.24(3) Conservation Act 1987
2807018	Lake Sheppard Marginal Strip	14.72	Fixed Marginal Strip - s.24(3) Conservation Act 1987
2807020	Lake Mason Marginal Strip	1.83	Fixed Marginal Strip - s.24(3) Conservation Act 1987
2807021	Lake Taylor Marginal Strip	0.42	Fixed Marginal Strip - s.24(3) Conservation Act 1987
2807216	Lake Mason Marginal Strip	1.28	Fixed Marginal Strip - s.24(3) Conservation Act 1987
2807535	Lake Sumner Forest Park	105031.87	Conservation Park - s.19 Conservation Act 1987

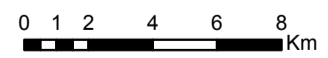


Map 7.2 Inventory of public conservation land and waters

Conservation Management Strategy
 Canterbury (Waitaha)

Map 2 of 23

Conservation unit data is current as of 31/10/2015

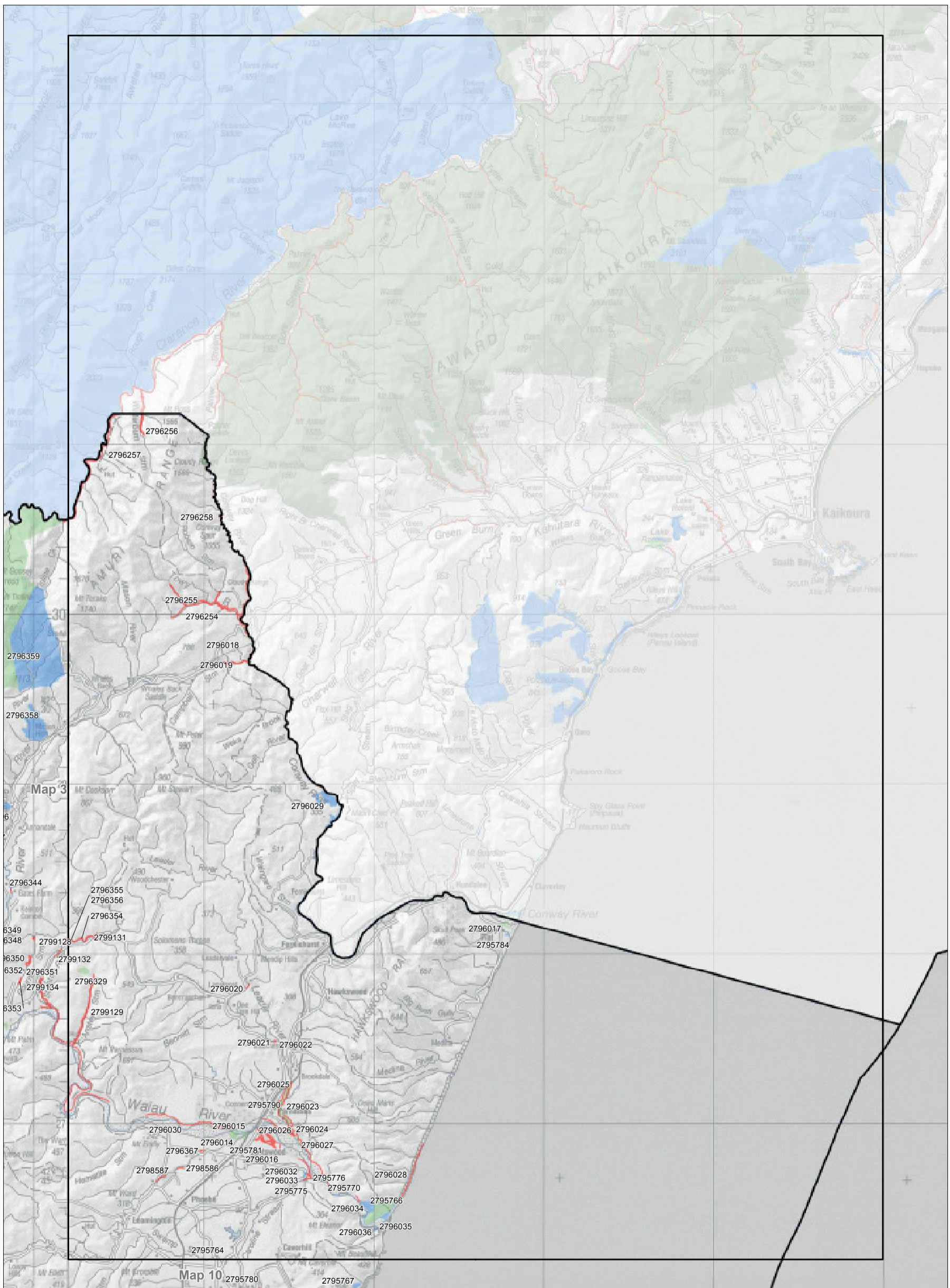


Inventory of public conservation land and waters
 Canterbury
 Map table 7.3

NaPALIS ID	Protected Area Name	Area (ha)	Legal Description
2796081	Jollies Pass Scenic Reserve	2131.55	Scenic Reserve - s.19(1)(a) Reserves Act 1977
2796252	The Hossack Conservation Area	1130.71	Stewardship Area - s.25 Conservation Act 1987
2796253	The Hossack Conservation Area	6268.58	Stewardship Area - s.25 Conservation Act 1987
2796259	Waiau Marginal Strip	3.12	Moveable Marginal Strip - s.24(1) & (2) Conservation Act 1987
2796260	Conservation Area Rogerson River Ben May	3.21	Stewardship Area - s.25 Conservation Act 1987
2796262	Conservation Area Chatterton Riverbed Ayrdale	24.63	Stewardship Area - s.25 Conservation Act 1987
2796276	Chatterton River Marginal Strip	1.41	Moveable Marginal Strip - s.24(1) & (2) Conservation Act 1987
2796277	Boundary Stream Marginal Strip	10.88	Moveable Marginal Strip - s.24(1) & (2) Conservation Act 1987
2796286	Conservation Area Hanmer Field Base and Picnic Are	29.25	Stewardship Area - s.25 Conservation Act 1987
2796288	Hanmer Springs Cemetery Reserve	1.97	Local Purpose Reserve - s.23 Reserves Act 1977
2796289	Wairangi Scenic Reserve	48.92	Scenic Reserve - s.19(1)(a) Reserves Act 1977
2796290	Conservation Area Wandle Bush	14.69	Stewardship Area - s.25 Conservation Act 1987
2796292	Conservation Area Hanmer Riverbed Waiau River Confluence	0.60	Stewardship Area - s.25 Conservation Act 1987
2796293	Conservation Area Hanmer Riverbed adjoining Hanmer Forest	235.87	Stewardship Area - s.25 Conservation Act 1987
2796296	Lottery Bush Scenic Reserve	21.51	Scenic Reserve - s.19(1)(a) Reserves Act 1977
2796297	Gravel Reserve Wandle Downs	0.40	Local Purpose Reserve - s.23 Reserves Act 1977
2796298	Conservation Area Lottery Riverbed Mason River Confluence	26.80	Stewardship Area - s.25 Conservation Act 1987
2796300	Conservation Area Garden Island Waiau River	0.44	Stewardship Area - s.25 Conservation Act 1987
2796301	Conservation Area Cabbage Tree Island Waiau River	2.16	Stewardship Area - s.25 Conservation Act 1987
2796302	Gravel Reserve Morses Road	0.41	Local Purpose Reserve - s.23 Reserves Act 1977
2796303	Gravel Reserve Leslie Hills Road	0.47	Local Purpose Reserve - s.23 Reserves Act 1977
2796304	Cemetery Reserve Druids Road	0.78	Local Purpose Reserve - s.23 Reserves Act 1977
2796305	Gravel Reserve Leslie Hills Road	0.44	Local Purpose Reserve - s.23 Reserves Act 1977
2796306	Gravel Reserve Mt Paul Road	0.44	Local Purpose Reserve - s.23 Reserves Act 1977
2796307	River Protection Reserve Waiau River	0.38	Local Purpose Reserve - s.23 Reserves Act 1977
2796308	Gravel Reserve Lyndon Road	0.42	Local Purpose Reserve - s.23 Reserves Act 1977
2796311	Conservation Area Mason Waiau Riverbeds	35.71	Stewardship Area - s.25 Conservation Act 1987
2796314	Recreation Reserve Waiau	1.78	Recreation Reserve - s.17 Reserves Act 1977
2796320	Local Purpose Reserve Public Utility Waiau	0.72	Local Purpose Reserve - s.23 Reserves Act 1977
2796321	Waiau Cemetery Reserve	0.37	Local Purpose Reserve - s.23 Reserves Act 1977
2796323	Local Purpose Reserve Public Utility Waiau	1.00	Local Purpose Reserve - s.23 Reserves Act 1977
2796324	Local Purpose Reserve Public Utility Waiau	1.00	Local Purpose Reserve - s.23 Reserves Act 1977
2796325	Conservation Area Waiareka Downs	7.69	Stewardship Area - s.25 Conservation Act 1987
2796327	Gravel Reserve Lyndon Road	0.60	Local Purpose Reserve - s.23 Reserves Act 1977
2796336	Hanmer Springs Marginal Strip	1.69	Fixed Marginal Strip - s.24(3) Conservation Act 1987
2796337	Percival River Marginal Strip	0.28	Fixed Marginal Strip - s.24(3) Conservation Act 1987
2796338	Percival River Marginal Strip	0.47	Fixed Marginal Strip - s.24(3) Conservation Act 1987
2796340	Hanmer River Marginal Strip	6.18	Fixed Marginal Strip - s.24(3) Conservation Act 1987
2796341	Hanmer River Marginal Strip	10.36	Fixed Marginal Strip - s.24(3) Conservation Act 1987
2796342	Hanmer River Marginal Strip	54.49	Fixed Marginal Strip - s.24(3) Conservation Act 1987
2796343	Lottery River Marginal Strip	77.98	Fixed Marginal Strip - s.24(3) Conservation Act 1987
2796344	Mason River Marginal Strip	0.23	Fixed Marginal Strip - s.24(3) Conservation Act 1987
2796345	Mason River Marginal Strip	15.72	Fixed Marginal Strip - s.24(3) Conservation Act 1987
2796346	Mason River Marginal Strip	4.44	Fixed Marginal Strip - s.24(3) Conservation Act 1987
2796347	Waiau River Marginal Strip	21.81	Fixed Marginal Strip - s.24(3) Conservation Act 1987
2796348	Bourne Stream Marginal Strip	1.17	Fixed Marginal Strip - s.24(3) Conservation Act 1987
2796349	Bourne Stream Marginal Strip	0.42	Fixed Marginal Strip - s.24(3) Conservation Act 1987
2796350	Bourne Stream Marginal Strip	3.44	Fixed Marginal Strip - s.24(3) Conservation Act 1987
2796351	Bourne Stream Marginal Strip	1.95	Fixed Marginal Strip - s.24(3) Conservation Act 1987
2796352	Bourne Stream Marginal Strip	1.02	Fixed Marginal Strip - s.24(3) Conservation Act 1987
2796353	Bourne Stream Marginal Strip	1.35	Fixed Marginal Strip - s.24(3) Conservation Act 1987
2796357	Hanmer Springs Marginal Strip	0.34	Fixed Marginal Strip - s.24(3) Conservation Act 1987
2796358	Terako Downs Scenic Reserve	191.45	Scenic Reserve - s.19(1)(a) Reserves Act 1977
2796359	Snowden Scenic Reserve	1239.50	Scenic Reserve - s.19(1)(a) Reserves Act 1977
2796362	Tinline Downs Conservation Area	1380.71	Stewardship Area - s.25 Conservation Act 1987
2796363	Percival River Marginal Strip	19.11	Moveable Marginal Strip - s.24(1) & (2) Conservation Act 1987
2796364	Gravel Reserve Rotherham Road South	1.79	Local Purpose Reserve - s.23 Reserves Act 1977
2796365	Percival River Marginal Strip	0.52	Moveable Marginal Strip - s.24(1) & (2) Conservation Act 1987
2798579	Pahau River Marginal Strip	3.49	Fixed Marginal Strip - s.24(3) Conservation Act 1987
2798580	Culverden Marginal Strip	0.35	Fixed Marginal Strip - s.24(3) Conservation Act 1987
2798636	Rogerson River Marginal Strip	4.34	Moveable Marginal Strip - s.24(1) & (2) Conservation Act 1987
2798644	Culverden Scientific Reserve	10.36	Scientific Reserve - s.21 Reserves Act 1977
2799128	Stanton River Marginal Strip	0.06	Moveable Marginal Strip - s.24(1) & (2) Conservation Act 1987
2799130	Rotherham Gravel Reserve	1.18	Local Purpose Reserve - s.23 Reserves Act 1977
2799133	Woodbank Road Marginal Strip	0.90	Fixed Marginal Strip - s.24(3) Conservation Act 1987
2799134	Waiau Marginal Strip	0.20	Moveable Marginal Strip - s.24(1) & (2) Conservation Act 1987
2799173	Lake Guyon Scenic Reserve	66.77	Scenic Reserve - s.19(1)(a) Reserves Act 1977
2799175	Conservation Area Tip Jug Hut	8.36	Stewardship Area - s.25 Conservation Act 1987
2799177	St James Conservation Area	79322.48	Stewardship Area - s.25 Conservation Act 1987
2799178	Lake Tennyson Scenic Reserve	245.70	Scenic Reserve - s.19(1)(a) Reserves Act 1977
2799179	Waiau River Marginal Strip	5.25	Moveable Marginal Strip - s.24(1) & (2) Conservation Act 1987
2799183	Marginal Strips - Woodbank	5.55	Moveable Marginal Strip - s.24(1) & (2) Conservation Act 1987
2799184	Hanmer Forest Park	11776.86	Conservation Park - s.19 Conservation Act 1987
2799185	Woodbank Conservation Area	823.89	Stewardship Area - s.25 Conservation Act 1987
2799186	Lochiel Conservation Area	4250.71	Stewardship Area - s.25 Conservation Act 1987
2799187	Woodbank Conservation Area	1408.59	Stewardship Area - s.25 Conservation Act 1987
2799191	Glencoe River Marginal Strip	1.89	Fixed Marginal Strip - s.24(3) Conservation Act 1987
2799193	Glencoe River Marginal Strip	7.47	Moveable Marginal Strip - s.24(1) & (2) Conservation Act 1987
2799430	Pahau River Marginal Strip	3.17	Moveable Marginal Strip - s.24(1) & (2) Conservation Act 1987
2803799	Molesworth Recreation Reserve	180779.21	Recreation Reserve - s.17 Reserves Act 1977

Inventory of public conservation land and waters
 Canterbury
 Map table 7.4

NaPALIS ID	Protected Area Name	Area (ha)	Legal Description
2795764	Drain Reserve Swamp Stream	1.09	Local Purpose Reserve - s.23 Reserves Act 1977
2795766	Conservation Area Pacific Ocean Foreshore Waiau Rivermouth	123.98	Stewardship Area - s.25 Conservation Act 1987
2795770	Waiau River Marginal Strip	0.87	Fixed Marginal Strip - s.24(3) Conservation Act 1987
2795775	Waiau River Marginal Strip	0.33	Moveable Marginal Strip - s.24(1) & (2) Conservation Act 1987
2795776	Waiau River Marginal Strip	4.18	Moveable Marginal Strip - s.24(1) & (2) Conservation Act 1987
2795781	Waiau River Marginal Strip	18.55	Moveable Marginal Strip - s.24(1) & (2) Conservation Act 1987
2795784	Cemetery Reserve Conway Flat	2.91	Local Purpose Reserve - s.23 Reserves Act 1977
2795790	Conservation Area Leader Riverbed Parnassus	54.64	Stewardship Area - s.25 Conservation Act 1987
2796014	Conservation Area Waiau Riverbed Spotswood	18.29	Stewardship Area - s.25 Conservation Act 1987
2796015	Conservation Area Waiau Riverbed Spotswood	15.25	Stewardship Area - s.25 Conservation Act 1987
2796016	Conservation Area Spotswood	2.20	Stewardship Area - s.25 Conservation Act 1987
2796017	Conservation Area Conway Village Sections	7.33	Stewardship Area - s.25 Conservation Act 1987
2796018	Conway River Marginal Strip	10.16	Fixed Marginal Strip - s.24(3) Conservation Act 1987
2796019	Campbell Stream Marginal Strip	3.06	Fixed Marginal Strip - s.24(3) Conservation Act 1987
2796020	Leader River Marginal Strip	0.78	Fixed Marginal Strip - s.24(3) Conservation Act 1987
2796021	Leader River Marginal Strip	0.12	Fixed Marginal Strip - s.24(3) Conservation Act 1987
2796022	Leader River Marginal Strip	0.23	Fixed Marginal Strip - s.24(3) Conservation Act 1987
2796023	Parnassus Marginal Strip	5.35	Fixed Marginal Strip - s.24(3) Conservation Act 1987
2796024	Waiau River Marginal Strip	0.88	Moveable Marginal Strip - s.24(1) & (2) Conservation Act 1987
2796025	Leader River Marginal Strip	3.06	Fixed Marginal Strip - s.24(3) Conservation Act 1987
2796026	Leader River Marginal Strip	1.67	Fixed Marginal Strip - s.24(3) Conservation Act 1987
2796027	Waiau River Marginal Strip	20.10	Fixed Marginal Strip - s.24(3) Conservation Act 1987
2796028	Waiau River Marginal Strip	7.63	Fixed Marginal Strip - s.24(3) Conservation Act 1987
2796029	Ngaroma Scenic Reserve	89.13	Scenic Reserve - s.19(1)(a) Reserves Act 1977
2796030	Waiau River Marginal Strip	10.99	Moveable Marginal Strip - s.24(1) & (2) Conservation Act 1987
2796032	Limestone Quarry MacMillan Road	4.26	Local Purpose Reserve - s.23 Reserves Act 1977
2796033	Conservation Area Dunster	0.62	Stewardship Area - s.25 Conservation Act 1987
2796034	Waiau Rivermouth Scenic Reserve	40.05	Scenic Reserve - s.19(1)(a) Reserves Act 1977
2796035	Waiau Rivermouth Recreation Reserve	26.48	Recreation Reserve - s.17 Reserves Act 1977
2796036	Waiau Rivermouth Recreation Reserve	2.04	Recreation Reserve - s.17 Reserves Act 1977
2796254	Towy River Marginal Strip	6.21	Fixed Marginal Strip - s.24(3) Conservation Act 1987
2796255	Towy/Conway River Marginal Strip	21.41	Fixed Marginal Strip - s.24(3) Conservation Act 1987
2796256	Clarence/Winterburn Marginal Strip	29.13	Fixed Marginal Strip - s.24(3) Conservation Act 1987
2796257	Clarence River Marginal Strip	28.77	Fixed Marginal Strip - s.24(3) Conservation Act 1987
2796258	Conway River Marginal Strip	24.68	Fixed Marginal Strip - s.24(3) Conservation Act 1987
2796329	Conservation Area Cheddar Valley	21.61	Stewardship Area - s.25 Conservation Act 1987
2796354	Stanton River Marginal Strip	0.15	Fixed Marginal Strip - s.24(3) Conservation Act 1987
2796355	Stanton River Marginal Strip	0.32	Fixed Marginal Strip - s.24(3) Conservation Act 1987
2796356	Stanton River Marginal Strip	0.48	Fixed Marginal Strip - s.24(3) Conservation Act 1987
2796367	Waiau River Marginal Strip	0.76	Moveable Marginal Strip - s.24(1) & (2) Conservation Act 1987
2798586	Leamington Stream Marginal Strip	1.05	Moveable Marginal Strip - s.24(1) & (2) Conservation Act 1987
2798587	Leamington Stream Marginal Strip	1.66	Moveable Marginal Strip - s.24(1) & (2) Conservation Act 1987
2799129	Waiau River Marginal Strip	54.85	Moveable Marginal Strip - s.24(1) & (2) Conservation Act 1987
2799131	Stanton River Marginal Strip	3.53	Moveable Marginal Strip - s.24(1) & (2) Conservation Act 1987
2799132	Stanton River Marginal Strip	1.24	Moveable Marginal Strip - s.24(1) & (2) Conservation Act 1987

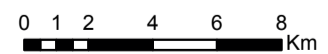


Map 7.4 Inventory of public conservation land and waters

Conservation Management Strategy
Canterbury (Waitaha)

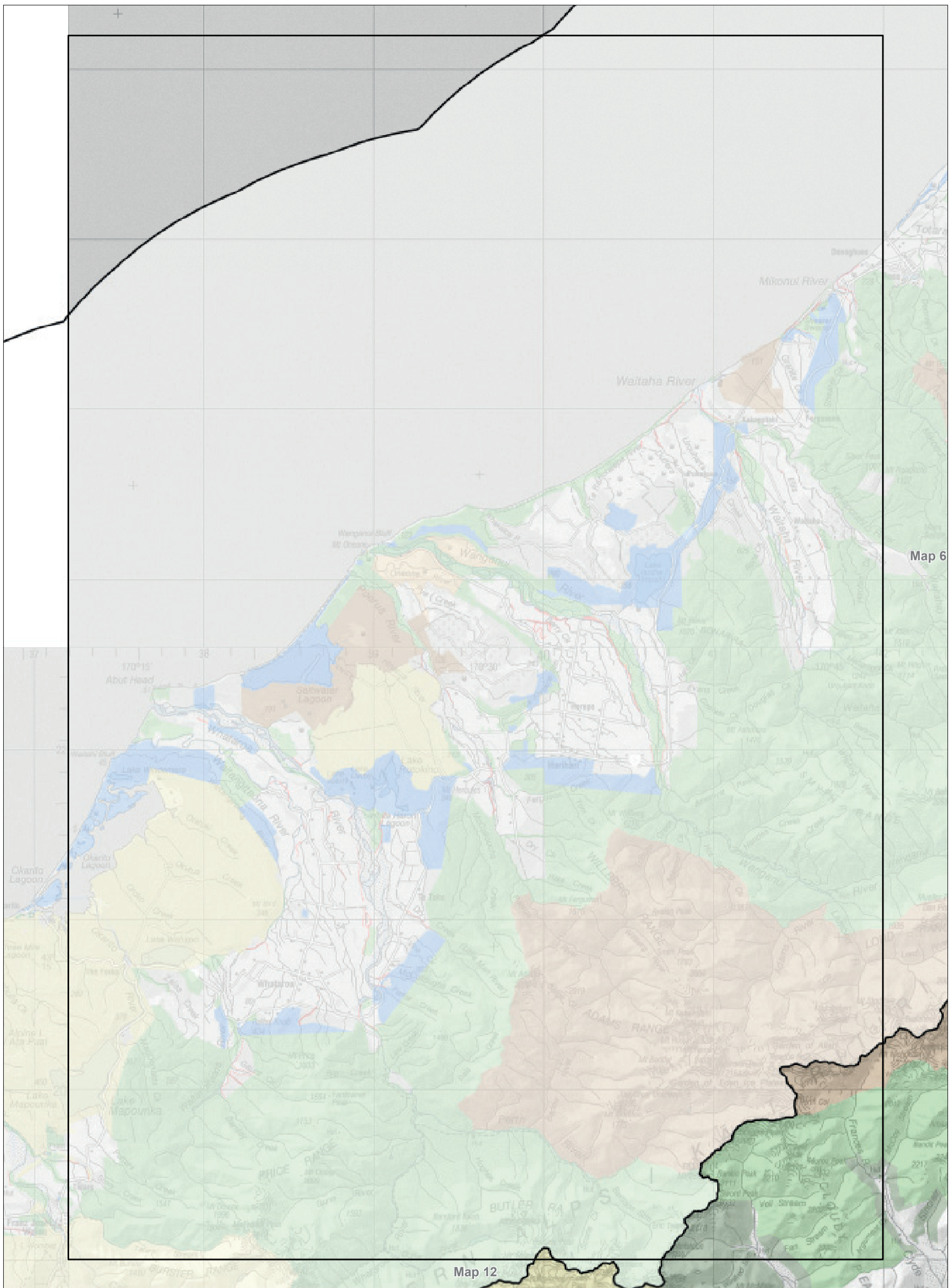
Map 4 of 23

Conservation unit data is current as of 31/10/2015



Inventory of public conservation land and waters
Canterbury
Map table 7.5

NaPALIS ID	Protected Area Name	Area (ha)	Legal Description
NO RECORD	NO RECORD		NO RECORD

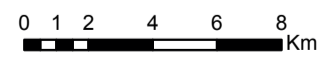


Map 7.5 Inventory of public conservation land and waters

Conservation Management Strategy
 Canterbury (Waitaha)

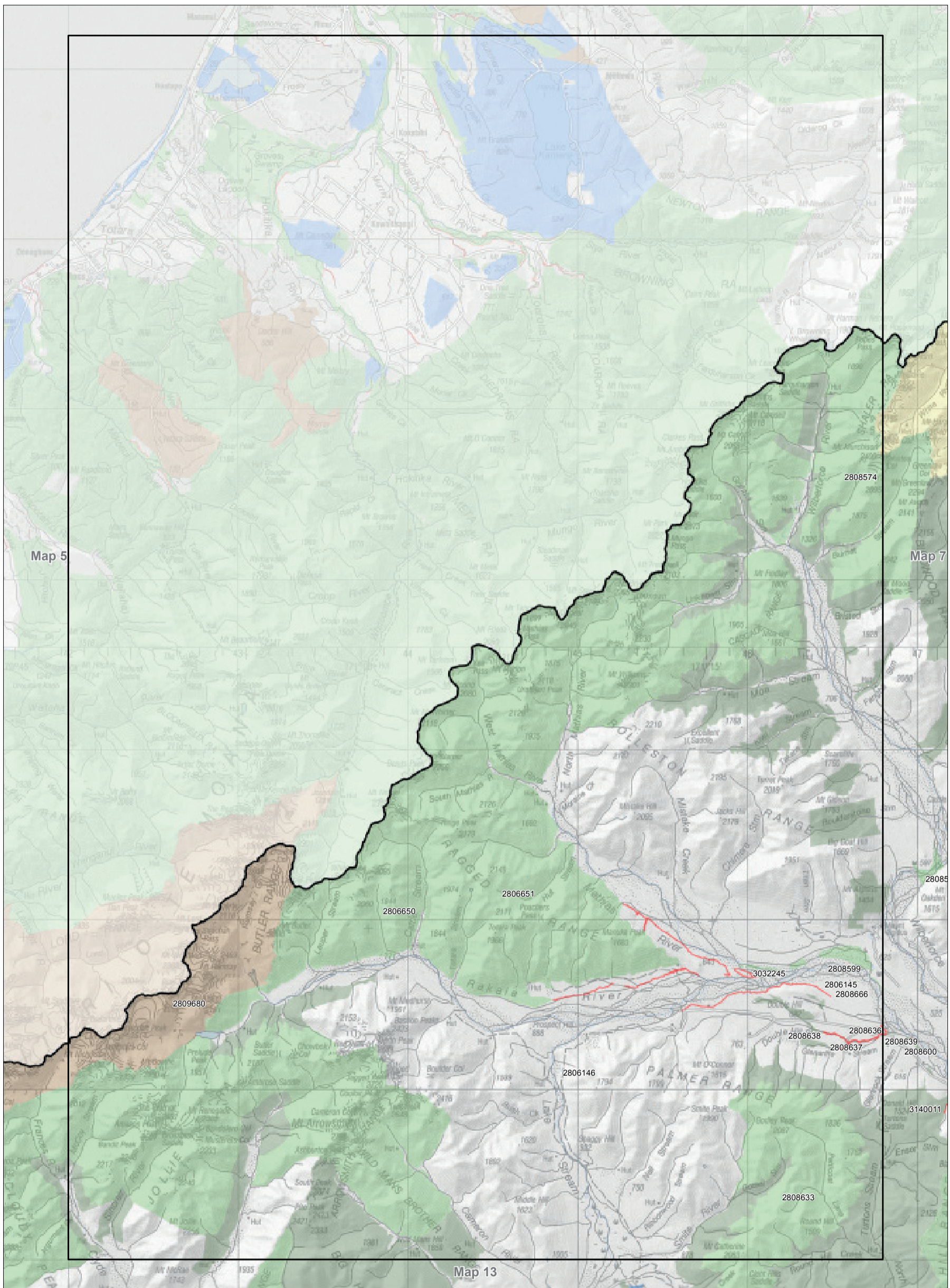
Map 5 of 23

Conservation unit data is current as of 31/10/2015



Inventory of public conservation land and waters
 Canterbury
 Map table 7.6

NaPALIS ID	Protected Area Name	Area (ha)	Legal Description
2806145	Marginal Strip - Double Hill	19.76	Moveable Marginal Strip - s.24(1) & (2) Conservation Act 1987
2806146	Local Purpose Reserve Public Utility Lake Stream	0.49	Local Purpose Reserve - s.23 Reserves Act 1977
2806650	Rangitata/Rakaia Head Waters Conservation Area	53815.39	Stewardship Area - s.25 Conservation Act 1987
2806651	Rakaia Forest Conservation Area	11134.82	Stewardship Area - s.25 Conservation Act 1987
2808574	Central Southern Alps Wilberforce Conservation Area	7454.10	Stewardship Area - s.25 Conservation Act 1987
2808599	Conservation Area Rakaia Riverbed Martello Cliffs	309.55	Stewardship Area - s.25 Conservation Act 1987
2808633	Double Hill Conservation Area	6945.14	Stewardship Area - s.25 Conservation Act 1987
2808636	Marginal Strip - Double Hill	0.96	Moveable Marginal Strip - s.24(1) & (2) Conservation Act 1987
2808637	Glenariffe Stream Marginal Strip	12.14	Moveable Marginal Strip - s.24(1) & (2) Conservation Act 1987
2808638	Double Hill Stream Marginal Strip	7.38	Moveable Marginal Strip - s.24(1) & (2) Conservation Act 1987
2808666	Conservation Area Rakaia River Margin Martello Cliffs	10.88	Stewardship Area - s.25 Conservation Act 1987
2809680	Adams Wilderness Area	7171.02	Wilderness Area - s.20 Conservation Act 1987
3032245	Manuka Point Marginal Strip	49.35	Moveable Marginal Strip - s.24(1) & (2) Conservation Act 1987

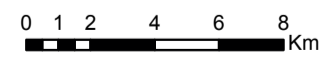


Map 7.6 Inventory of public conservation land and waters

Conservation Management Strategy
Canterbury (Waitaha)

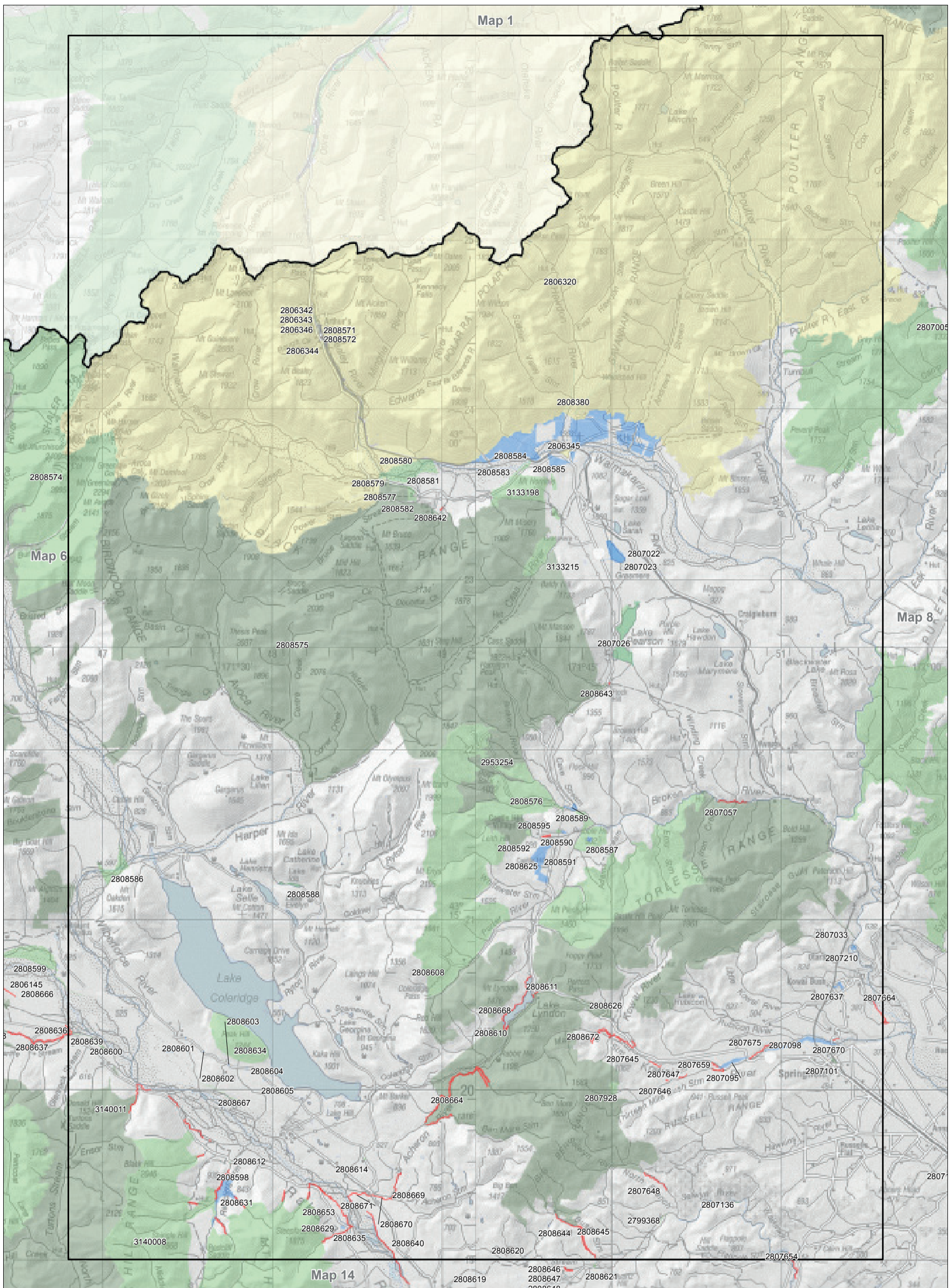
Map 6 of 23

Conservation unit data is current as of 31/10/2015



Inventory of public conservation land and waters
 Canterbury
 Map table 7.7

NaPALIS ID	Protected Area Name	Area (ha)	Legal Description
2799368	Conservation Area Selwyn Riverbed Wether Hills	4.54	Stewardship Area - s.25 Conservation Act 1987
2806320	Arthur's Pass National Park	87540.19	National Park - s.4 National Parks Act 1980
2806342	Conservation Area Arthur's Pass Village	1.31	Stewardship Area - s.25 Conservation Act 1987
2806343	Conservation Area Arthur's Pass Village	0.71	Stewardship Area - s.25 Conservation Act 1987
2806344	Conservation Area Arthur's Pass Village	0.91	Stewardship Area - s.25 Conservation Act 1987
2806345	Hawdon Flats Government Purpose Reserve National Park	1056.59	Government Purpose Reserve - s.22 Reserves Act 1977
2806346	Conservation Area Arthur's Pass Village	0.18	Stewardship Area - s.25 Conservation Act 1987
2807022	Lake Grasmere Scenic Reserve	12.28	Scenic Reserve - s.19(1)(a) Reserves Act 1977
2807023	Lake Grasmere Recreation Reserve	70.25	Recreation Reserve - s.17 Reserves Act 1977
2807026	Conservation Area Lake Pearson	241.55	Stewardship Area - s.25 Conservation Act 1987
2807033	Conservation Area Pattersons Stream	5.82	Stewardship Area - s.25 Conservation Act 1987
2807057	Broken River Marginal Strip	4.02	Fixed Marginal Strip - s.24(3) Conservation Act 1987
2807095	Kowai River Government Purpose Reserve	30.76	Government Purpose Reserve - s.22 Reserves Act 1977
2807098	Kowai River Conservation Reserve	61.23	Local Purpose Reserve - s.23 Reserves Act 1977
2807101	Conservation Area Springfield	4.02	Stewardship Area - s.25 Conservation Act 1987
2807136	Conservation Area Selwyn Riverbed Wyndale Hills	1.39	Stewardship Area - s.25 Conservation Act 1987
2807210	Otarama Recreation Reserve	8.06	Recreation Reserve - s.17 Reserves Act 1977
2807637	Lords Bush Scenic Reserve	11.74	Scenic Reserve - s.19(1)(a) Reserves Act 1977
2807645	Kowai River Marginal Strip	6.38	Fixed Marginal Strip - s.24(3) Conservation Act 1987
2807646	Thirteen Mile Bush Stream Marginal Strip	0.27	Fixed Marginal Strip - s.24(3) Conservation Act 1987
2807647	Thirteen Mile Bush Stream Marginal Strip	1.31	Fixed Marginal Strip - s.24(3) Conservation Act 1987
2807648	North Branch Selwyn River Marginal Strip	4.10	Fixed Marginal Strip - s.24(3) Conservation Act 1987
2807654	Selwyn River Marginal Strip	3.65	Moveable Marginal Strip - s.24(1) & (2) Conservation Act 1987
2807659	Kowai River Marginal Strip	3.22	Moveable Marginal Strip - s.24(1) & (2) Conservation Act 1987
2807664	Waimakariri River Catchment Marginal Strips (Movable)	4.94	Moveable Marginal Strip - s.24(1) & (2) Conservation Act 1987
2807670	Kowai River Marginal Strip	0.31	Fixed Marginal Strip - s.24(3) Conservation Act 1987
2807675	Kowai River Marginal Strip	3.89	Moveable Marginal Strip - s.24(1) & (2) Conservation Act 1987
2807928	Ben More Conservation Area	29.63	Stewardship Area - s.25 Conservation Act 1987
2808380	Conservation Area Hawdon River	15.45	Stewardship Area - s.25 Conservation Act 1987
2808571	Conservation Area Arthur's Pass Village	0.07	Stewardship Area - s.25 Conservation Act 1987
2808572	Conservation Area Arthur's Pass Village	0.50	Stewardship Area - s.25 Conservation Act 1987
2808575	Craigieburn Forest Park	44693.74	Conservation Park - s.19 Conservation Act 1987
2808576	Hogs Back Conservation Area	9.45	Stewardship Area - s.25 Conservation Act 1987
2808577	Conservation Area - Bealey Spur	3.39	Stewardship Area - s.25 Conservation Act 1987
2808579	Conservation Area - Bealey Spur	1.27	Stewardship Area - s.25 Conservation Act 1987
2808580	Conservation Area Bealey/Waimakariri Riverbed	264.14	Stewardship Area - s.25 Conservation Act 1987
2808581	Conservation Area - Bealey Spur	18.58	Stewardship Area - s.25 Conservation Act 1987
2808582	Conservation Area - Bealey Spur	16.92	Stewardship Area - s.25 Conservation Act 1987
2808583	Conservation Area Waimakariri Riverbed Paddys Bend	20.42	Stewardship Area - s.25 Conservation Act 1987
2808584	Cora Lynn Gravel Reserve	58.12	Local Purpose Reserve - s.23 Reserves Act 1977
2808585	Comer Knob And Goldney Hill Government Purpose Reserve	62.73	Government Purpose Reserve - s.22 Reserves Act 1977
2808586	Conservation Area Wilberforce Riverbed	126.18	Stewardship Area - s.25 Conservation Act 1987
2808587	Scenic Reserve Prebble Hill	8.09	Scenic Reserve - s.19(1)(a) Reserves Act 1977
2808588	Lake Ida Conservation Area	15.14	Stewardship Area - s.25 Conservation Act 1987
2808589	Cave Stream Scenic Reserve	15.68	Scenic Reserve - s.19(1)(a) Reserves Act 1977
2808590	Enys Scientific Reserve	4.39	Scientific Reserve - s.21 Reserves Act 1977
2808591	Lance Mccaskill Nature Reserve	6.40	Nature Reserve - s.20 Reserves Act 1977
2808592	Kura Tawhiti (Castle Hill) Scenic Reserve	102.97	Scenic Reserve - s.19(1)(a) Reserves Act 1977
2808595	Castle Hill Village Marginal Strip	2.91	Fixed Marginal Strip - s.24(3) Conservation Act 1987
2808598	Redcliffe Stream Marginal Strip	9.49	Fixed Marginal Strip - s.24(3) Conservation Act 1987
2808600	Conservation Area Rakaia Riverbed Glenaan	14.26	Stewardship Area - s.25 Conservation Act 1987
2808601	Gravel Reserve Algidus Road	0.80	Local Purpose Reserve - s.23 Reserves Act 1977
2808602	Gravel Reserve Algidus Road	0.81	Local Purpose Reserve - s.23 Reserves Act 1977
2808603	Gravel Reserve Algidus Road	0.81	Local Purpose Reserve - s.23 Reserves Act 1977
2808604	Gravel Reserve Algidus Road	0.81	Local Purpose Reserve - s.23 Reserves Act 1977
2808605	Gravel Reserve Algidus Road	0.94	Local Purpose Reserve - s.23 Reserves Act 1977
2808608	Porter Heights Conservation Area	717.49	Stewardship Area - s.25 Conservation Act 1987
2808610	Community Buildings Reserve Lake Lyndon	1.92	Local Purpose Reserve - s.23 Reserves Act 1977
2808611	Korowai Marginal Strip	0.36	Moveable Marginal Strip - s.24(1) & (2) Conservation Act 1987
2808612	Conservation Area Redcliffe	0.94	Stewardship Area - s.25 Conservation Act 1987
2808614	Conservation Area The Acheron	2.01	Stewardship Area - s.25 Conservation Act 1987
2808620	Gravel Reserve Little Snowdon	0.39	Local Purpose Reserve - s.23 Reserves Act 1977
2808625	Conservation Area - Castle Hill	8449.49	Stewardship Area - s.25 Conservation Act 1987
2808626	Korowai Torlesse Tussocklands Park	20745.52	Conservation Park - s.19 Conservation Act 1987
2808629	Mount Hutt Conservation Area Marginal Strips	22.93	Moveable Marginal Strip - s.24(1) & (2) Conservation Act 1987
2808631	Redcliffe Stream Scenic Reserve	96.72	Scenic Reserve - s.19(1)(a) Reserves Act 1977
2808634	Peak Hill Conservation Area	628.11	Stewardship Area - s.25 Conservation Act 1987
2808635	Hutt Stream Scenic Reserve	3.61	Scenic Reserve - s.19(1)(a) Reserves Act 1977
2808639	Marginal Strip Glenariffe Stream	0.75	Moveable Marginal Strip - s.24(1) & (2) Conservation Act 1987
2808640	Rakaia River Marginal Strip	11.53	Fixed Marginal Strip - s.24(3) Conservation Act 1987
2808642	Broad Stream Marginal Strip	0.62	Fixed Marginal Strip - s.24(3) Conservation Act 1987
2808643	Craigieburn Stream Marginal Strip	0.20	Fixed Marginal Strip - s.24(3) Conservation Act 1987
2808644	Bush Stream Marginal Strip	6.73	Fixed Marginal Strip - s.24(3) Conservation Act 1987
2808645	Bush Stream Marginal Strip	4.56	Fixed Marginal Strip - s.24(3) Conservation Act 1987
2808653	Rakaia River Marginal Strip	10.30	Fixed Marginal Strip - s.24(3) Conservation Act 1987
2808664	Acheron River Marginal Strip	44.04	Fixed Marginal Strip - s.24(3) Conservation Act 1987
2808667	Conservation Area Rakaia River Margin Peak Hill	10.38	Stewardship Area - s.25 Conservation Act 1987
2808668	Lake Lyndon Marginal Strip	12.05	Fixed Marginal Strip - s.24(3) Conservation Act 1987
2808669	Acheron River Marginal Strip	4.23	Fixed Marginal Strip - s.24(3) Conservation Act 1987
2808670	Acheron River Marginal Strip	3.02	Fixed Marginal Strip - s.24(3) Conservation Act 1987
2808671	Acheron River Marginal Strip	4.57	Fixed Marginal Strip - s.24(3) Conservation Act 1987
2808672	Ben More Marginal Strip	6.56	Fixed Marginal Strip - s.24(3) Conservation Act 1987
2953254	Conservation Area - Castle Hill	7.37	Stewardship Area - s.25 Conservation Act 1987
3133198	Conservation Area - Mt Horrible	439.04	Stewardship Area - s.25 Conservation Act 1987
3133215	Conservation Area - Cass Valley	214.78	Stewardship Area - s.25 Conservation Act 1987
3140008	Conservation Area - Hakatere Conservation Park (Proposed Addition)	5392.86	Stewardship Area - s.25 Conservation Act 1987
3140011	Rakaia River Catchment Marginal Strips (Movable)	15.38	Moveable Marginal Strip - s.24(1) & (2) Conservation Act 1987

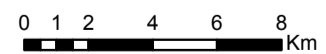


Map 7.7 Inventory of public conservation land and waters

Conservation Management Strategy
Canterbury (Waitaha)

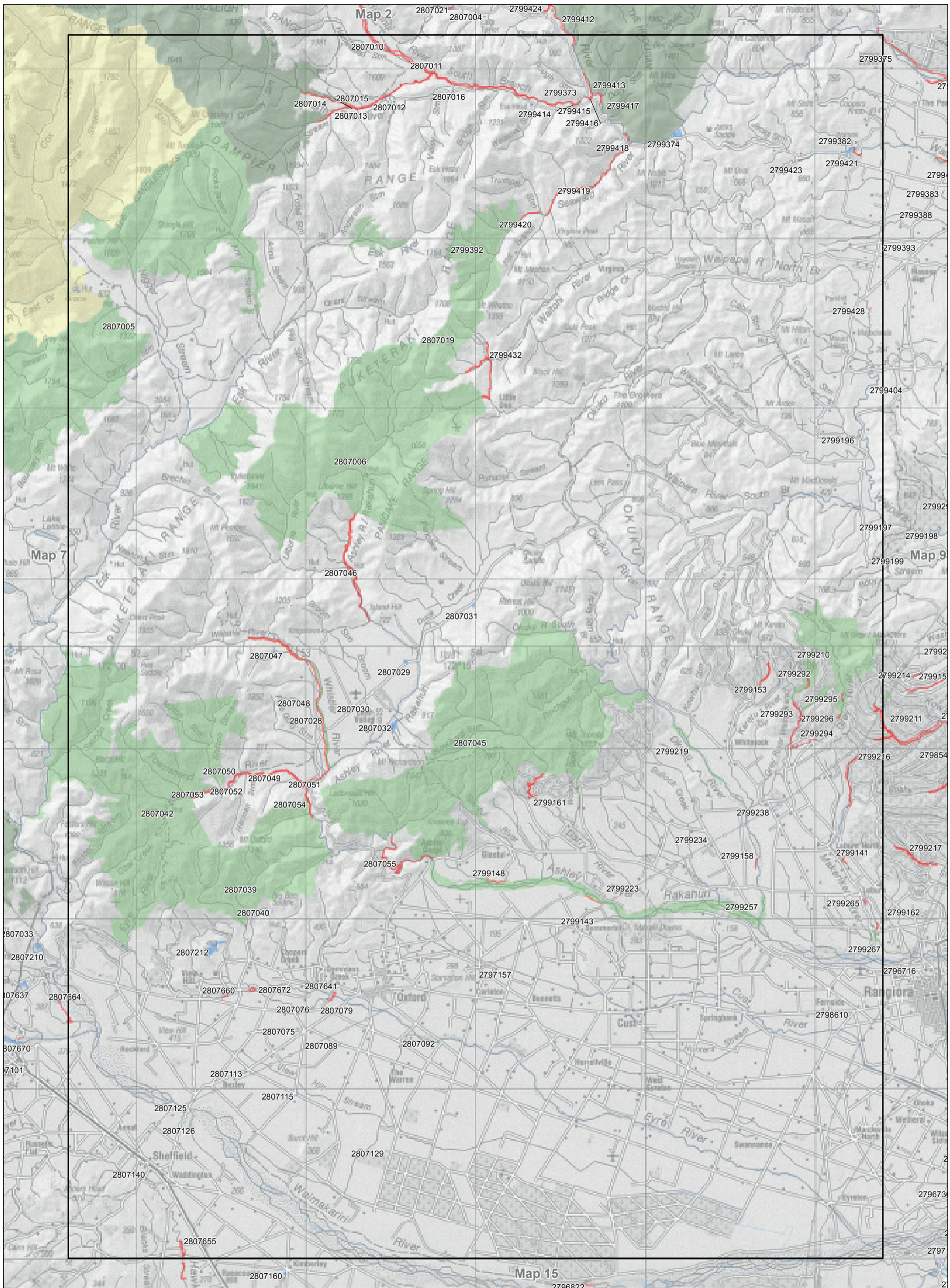
Map 7 of 23

Conservation unit data is current as of 31/10/2015



Inventory of public conservation land and waters
 Canterbury
 Map table 7.8

NaPALIS ID	Protected Area Name	Area (ha)	Legal Description
2797157	Conservation Area Cust Riverbed Margin	5.08	Stewardship Area - s.25 Conservation Act 1987
2798610	Gravel Reserve Fernside	0.31	Local Purpose Reserve - s.23 Reserves Act 1977
2799141	Makerikeri river Marginal Strip	1.02	Moveable Marginal Strip - s.24(1) & (2) Conservation Act 1987
2799143	Ashley River Marginal Strip	2.36	Moveable Marginal Strip - s.24(1) & (2) Conservation Act 1987
2799148	Ashley River Marginal Strip	2.67	Moveable Marginal Strip - s.24(1) & (2) Conservation Act 1987
2799153	Karetu River Marginal Strip	6.59	Moveable Marginal Strip - s.24(1) & (2) Conservation Act 1987
2799158	Okuku River Marginal Strip	1.29	Moveable Marginal Strip - s.24(1) & (2) Conservation Act 1987
2799161	Gary River Marginal Strip	9.68	Moveable Marginal Strip - s.24(1) & (2) Conservation Act 1987
2799196	Conservation Area Waipara Riverbed Bellfield	0.09	Stewardship Area - s.25 Conservation Act 1987
2799197	Conservation Area Waipara Riverbed Ohuriawa Gorge	6.27	Stewardship Area - s.25 Conservation Act 1987
2799210	Mount Grey / Maukatere Conservation Area	1625.92	Stewardship Area - s.25 Conservation Act 1987
2799216	Makerikeri River Marginal Strip	8.52	Moveable Marginal Strip - s.24(1) & (2) Conservation Act 1987
2799219	Conservation Area Okuku Riverbed Hillside	62.07	Stewardship Area - s.25 Conservation Act 1987
2799223	Conservation Area Ashley Riverbed Rakahuri	1101.61	Stewardship Area - s.25 Conservation Act 1987
2799234	Gravel Reserve No 2 Road	0.51	Local Purpose Reserve - s.23 Reserves Act 1977
2799238	Gravel Reserve Stonyflat Road	2.05	Local Purpose Reserve - s.23 Reserves Act 1977
2799257	Conservation Area Okuku Riverbed Serenada	30.33	Stewardship Area - s.25 Conservation Act 1987
2799265	Makerikeri River Marginal Strip	1.61	Fixed Marginal Strip - s.24(3) Conservation Act 1987
2799267	Conservation Area Makerikeri River Leigh Camp	20.73	Stewardship Area - s.25 Conservation Act 1987
2799292	Marinal Strip Grey River West Branch	1.56	Fixed Marginal Strip - s.24(3) Conservation Act 1987
2799293	Grey River Marginal Strip	8.02	Moveable Marginal Strip - s.24(1) & (2) Conservation Act 1987
2799294	Grey River Marginal Strip	2.56	Moveable Marginal Strip - s.24(1) & (2) Conservation Act 1987
2799295	Marginal Strip Grey River	0.68	Fixed Marginal Strip - s.24(3) Conservation Act 1987
2799296	Grey River Marginal Strip	0.54	Fixed Marginal Strip - s.24(3) Conservation Act 1987
2799373	Conservation Area Hurunui River South Branch	2.68	Stewardship Area - s.25 Conservation Act 1987
2799374	Lakes Road Stock Reserve	18.53	Local Purpose Reserve - s.23 Reserves Act 1977
2799375	Conservation Area Hurunui River Kairn Brock	1.27	Stewardship Area - s.25 Conservation Act 1987
2799382	Waitohi River Government Purpose Reserve Wildlife Management	12.17	Government Purpose Reserve - s.22 Reserves Act 1977
2799392	Seaward Forest Conservation Area	1052.64	Stewardship Area - s.25 Conservation Act 1987
2799413	South Branch Hurunui River Marginal Strip	3.46	Fixed Marginal Strip - s.24(3) Conservation Act 1987
2799414	South Branch Hurunui River Marginal Strip	2.03	Fixed Marginal Strip - s.24(3) Conservation Act 1987
2799415	South Branch Hurunui River Marginal Strip	0.17	Fixed Marginal Strip - s.24(3) Conservation Act 1987
2799416	South Branch Hurunui River Marginal Strip	0.40	Fixed Marginal Strip - s.24(3) Conservation Act 1987
2799417	South Branch Hurunui River Marginal Strip	2.17	Fixed Marginal Strip - s.24(3) Conservation Act 1987
2799418	Hurunui River Marginal Strip	1.09	Fixed Marginal Strip - s.24(3) Conservation Act 1987
2799419	Seaward River Marginal Strip	17.78	Fixed Marginal Strip - s.24(3) Conservation Act 1987
2799420	Seaward River Marginal Strip	3.15	Fixed Marginal Strip - s.24(3) Conservation Act 1987
2799421	Waitohi River Marginal Strip	1.82	Fixed Marginal Strip - s.24(3) Conservation Act 1987
2799423	Waitohi Peaks Settlement Marginal Strip	0.44	Fixed Marginal Strip - s.24(3) Conservation Act 1987
2799428	Waipara River North Branch Marginal Strip	0.18	Fixed Marginal Strip - s.24(3) Conservation Act 1987
2799432	Panhandle Stream Marginal Strip	16.76	Moveable Marginal Strip - s.24(1) & (2) Conservation Act 1987
2807005	Lochinvar Forest Conservation Area	13109.38	Stewardship Area - s.25 Conservation Act 1987
2807006	Puketeraki Forest Conservation Area	9119.55	Stewardship Area - s.25 Conservation Act 1987
2807010	Hurunui River Marginal Strip	28.78	Fixed Marginal Strip - s.24(3) Conservation Act 1987
2807011	South Branch Hurunui River Marginal Strip	43.41	Fixed Marginal Strip - s.24(3) Conservation Act 1987
2807012	North Esk River Marginal Strip	0.80	Fixed Marginal Strip - s.24(3) Conservation Act 1987
2807013	North Esk River Marginal Strip	3.82	Fixed Marginal Strip - s.24(3) Conservation Act 1987
2807014	North Esk River Marginal Strip	10.07	Fixed Marginal Strip - s.24(3) Conservation Act 1987
2807015	Lucy Stream Marginal Strip	9.67	Fixed Marginal Strip - s.24(3) Conservation Act 1987
2807016	South Branch Hurunui River Marginal Strip	21.45	Fixed Marginal Strip - s.24(3) Conservation Act 1987
2807019	The Den Conservation Area	1708.98	Stewardship Area - s.25 Conservation Act 1987
2807028	Conservation Area Whistler Riverbed	121.18	Stewardship Area - s.25 Conservation Act 1987
2807029	Lees Valley Recreation Reserve	5.80	Recreation Reserve - s.17 Reserves Act 1977
2807030	Gravel Reserve Lees Valley Road	0.98	Local Purpose Reserve - s.23 Reserves Act 1977
2807031	Roadmans Hut Site Reserve Lees Valley Road	4.27	Local Purpose Reserve - s.23 Reserves Act 1977
2807032	Lees Valley Stock Resting Reserve	19.91	Local Purpose Reserve - s.23 Reserves Act 1977
2807039	Conservation Area Coopers Creek	37.65	Stewardship Area - s.25 Conservation Act 1987
2807040	Gravel Reserve Sladdens Bush Road	1.71	Local Purpose Reserve - s.23 Reserves Act 1977
2807042	Oxford Forest Conservation Area	13311.00	Stewardship Area - s.25 Conservation Act 1987
2807045	Mt. Thomas Forest Conservation Area	10638.51	Stewardship Area - s.25 Conservation Act 1987
2807046	Ashley River Marginal Strip	27.84	Fixed Marginal Strip - s.24(3) Conservation Act 1987
2807047	Whistler River Marginal Strip	8.27	Fixed Marginal Strip - s.24(3) Conservation Act 1987
2807048	Whistler River Marginal Strip	23.71	Fixed Marginal Strip - s.24(3) Conservation Act 1987
2807049	Townshend River Marginal Strip	11.94	Fixed Marginal Strip - s.24(3) Conservation Act 1987
2807050	Townshend River Marginal Strip	3.77	Fixed Marginal Strip - s.24(3) Conservation Act 1987
2807051	Ashley Townshend River Marginal Strip	13.85	Fixed Marginal Strip - s.24(3) Conservation Act 1987
2807052	Townshend River Marginal Strip	2.68	Fixed Marginal Strip - s.24(3) Conservation Act 1987
2807053	Townshend River Marginal Strip	7.11	Fixed Marginal Strip - s.24(3) Conservation Act 1987
2807054	Ashley River Marginal Strip	2.44	Fixed Marginal Strip - s.24(3) Conservation Act 1987
2807055	Ashley Gorge Marginal Strip	21.32	Fixed Marginal Strip - s.24(3) Conservation Act 1987
2807075	Gravel Reserve McPhedrons Road	2.02	Local Purpose Reserve - s.23 Reserves Act 1977
2807076	Gravel Reserve Eyre River	1.82	Local Purpose Reserve - s.23 Reserves Act 1977
2807079	River Conservation Reserve Eyre River	1.30	Local Purpose Reserve - s.23 Reserves Act 1977
2807089	Gravel Reserve South Eyre Road	2.02	Local Purpose Reserve - s.23 Reserves Act 1977
2807092	Conservation Area Riversdale	3.80	Stewardship Area - s.25 Conservation Act 1987
2807113	Gravel Reserve Depot Road	2.14	Local Purpose Reserve - s.23 Reserves Act 1977
2807115	Gravel Reserve Parish Road	2.02	Local Purpose Reserve - s.23 Reserves Act 1977
2807125	Conservation Area Gorge Hill	3.12	Stewardship Area - s.25 Conservation Act 1987
2807126	Water Race Reserve Waimakariri River Gorge	2.02	Local Purpose Reserve - s.23 Reserves Act 1977
2807129	Eyrewell Scientific Reserve	2.30	Scientific Reserve - s.21 Reserves Act 1977
2807140	Conservation Area Sheffield	1.55	Stewardship Area - s.25 Conservation Act 1987
2807212	View Hill Scenic Reserve	44.41	Scenic Reserve - s.19(1)(a) Reserves Act 1977
2807641	Oxford Marginal Strip	1.90	Fixed Marginal Strip - s.24(3) Conservation Act 1987
2807655	Hawkins River Marginal Strip	16.16	Moveable Marginal Strip - s.24(1) & (2) Conservation Act 1987
2807660	Eyre River Marginal Strip	0.98	Moveable Marginal Strip - s.24(1) & (2) Conservation Act 1987
2807672	Eyre River Marginal Strip	1.70	Moveable Marginal Strip - s.24(1) & (2) Conservation Act 1987

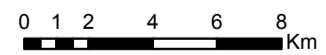


Map 7.8 Inventory of public conservation land and waters

Conservation Management Strategy
Canterbury (Waitaha)

Map 8 of 23

Conservation unit data is current as of 31/10/2015

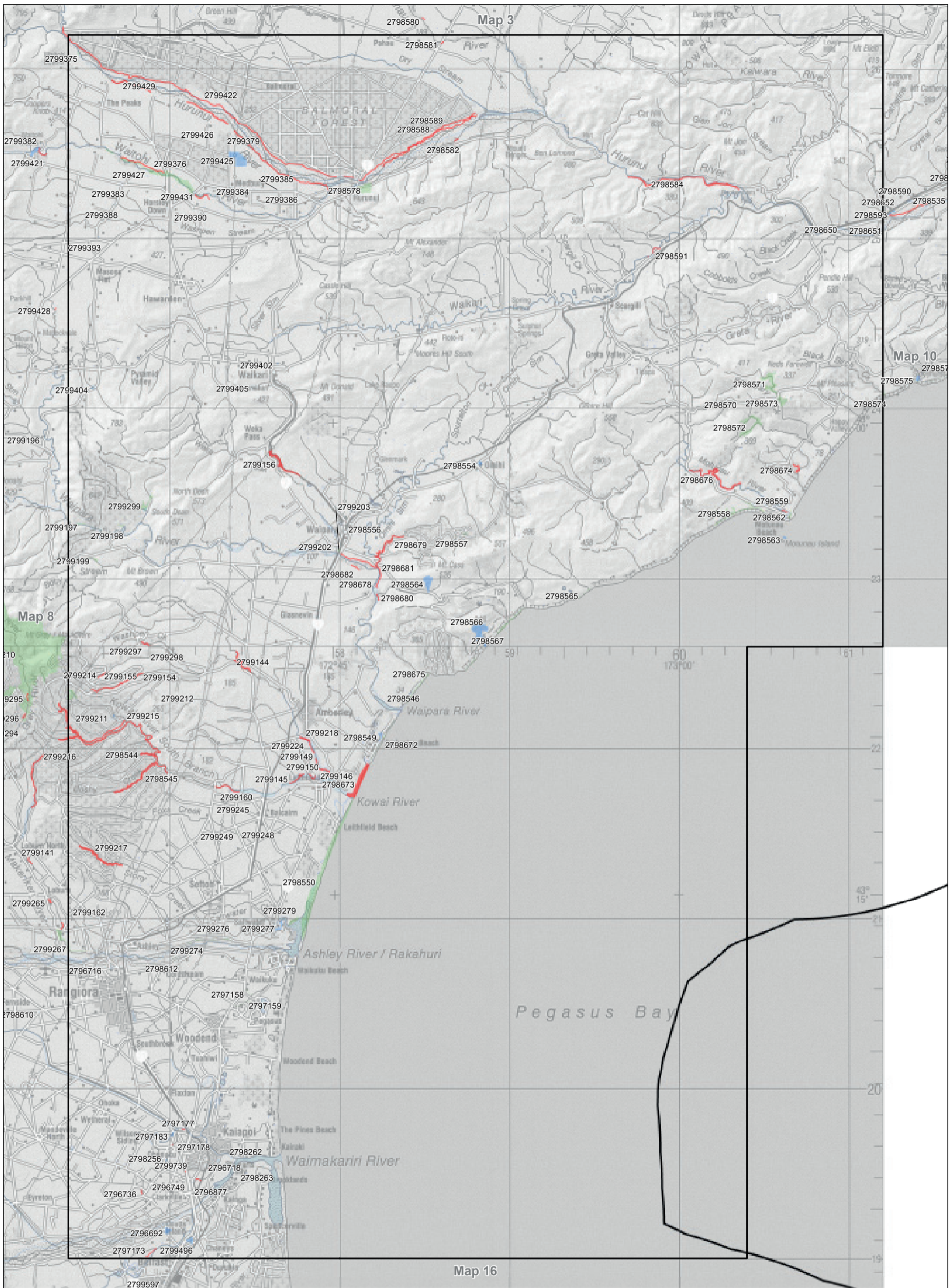


**Inventory of public conservation land and waters
Canterbury
Map table 7.9**

NaPALIS ID	Protected Area Name	Area (ha)	Legal Description
2796692	Coutts Island Wildlife Sanctuary	9.97	Government Purpose Reserve - s.22 Reserves Act 1977
2796716	Waimakariri Area Office Government Purpose Reserve	0.86	Government Purpose Reserve - s.22 Reserves Act 1977
2796718	Kaikainui Stream Marginal Strip	0.02	Moveable Marginal Strip - s.24(1) & (2) Conservation Act 1987
2796736	Kaiapoi River Marginal Strip	0.46	Fixed Marginal Strip - s.24(3) Conservation Act 1987
2796749	Courtenay Stream Marginal Strip	0.11	Fixed Marginal Strip - s.24(3) Conservation Act 1987
2796877	Local Purpose Esplanade Reserve Neeves Road	0.49	Local Purpose Reserve - s.23 Reserves Act 1977
2797158	Conservation Area Wetlands Area Kaiapohia	1.44	Stewardship Area - s.25 Conservation Act 1987
2797159	Conservation Area Brockenhurst Wetlands	1.84	Stewardship Area - s.25 Conservation Act 1987
2797173	Coutts Island Marginal Strip	0.47	Fixed Marginal Strip - s.24(3) Conservation Act 1987
2797177	Ohoka Stream Marginal Strp	0.33	Moveable Marginal Strip - s.24(1) & (2) Conservation Act 1987
2797178	Kaiapoi River Marginal Strip	0.01	Fixed Marginal Strip - s.24(3) Conservation Act 1987
2797183	Ohoka Stream Recreation Reserve	2.03	Recreation Reserve - s.17 Reserves Act 1977
2798256	Recreation Reserve Kaiapoi	1.83	Recreation Reserve - s.17 Reserves Act 1977
2798262	Ferry Reserve Kaiapoi River	0.17	Local Purpose Reserve - s.23 Reserves Act 1977
2798263	Conservation Area Brooklands Waterski Club	0.17	Stewardship Area - s.25 Conservation Act 1987
2798544	Watsons Creek Marginal Strip	5.42	Moveable Marginal Strip - s.24(1) & (2) Conservation Act 1987
2798545	Bushy Creek Marginal Strip	14.61	Moveable Marginal Strip - s.24(1) & (2) Conservation Act 1987
2798546	Conservation Area Pacific Ocean Foreshore Waipara River	11.96	Stewardship Area - s.25 Conservation Act 1987
2798549	Government Purpose Reserve Land Amberley Beach	5.75	Government Purpose Reserve - s.22 Reserves Act 1977
2798550	Conservation Area Pacific Ocean Foreshore	221.41	Stewardship Area - s.25 Conservation Act 1987
2798554	Omihi Recreation Reserve	3.74	Recreation Reserve - s.17 Reserves Act 1977
2798556	Recreation Reserve Waipara	0.15	Recreation Reserve - s.17 Reserves Act 1977
2798557	Mt Ararat Rata Reserve Conservation Area	1.92	Stewardship Area - s.25 Conservation Act 1987
2798558	Conservation Area Pacific Ocean Foreshore Evesham	43.71	Stewardship Area - s.25 Conservation Act 1987
2798559	Motunau River Marginal Strip	0.25	Fixed Marginal Strip - s.24(3) Conservation Act 1987
2798562	Conservation Area Motunau River Mouth	3.98	Stewardship Area - s.25 Conservation Act 1987
2798563	Motunau Island Nature Reserve	2.72	Nature Reserve - s.20 Reserves Act 1977
2798564	Tiromoana Scenic Reserve	31.19	Scenic Reserve - s.19(1)(a) Reserves Act 1977
2798565	Conservation Area Pacific Ocean Foreshore below Montserrat	2.78	Stewardship Area - s.25 Conservation Act 1987
2798566	Scenic Reserve Tiromoana	59.58	Scenic Reserve - s.19(1)(a) Reserves Act 1977
2798567	Conservation Area Pacific Ocean Foreshore below Ella	19.81	Stewardship Area - s.25 Conservation Act 1987
2798570	Conservation Area Glentara	0.04	Stewardship Area - s.25 Conservation Act 1987
2798571	Boundary Creek Conservation Area proposed Scenic Reserve	55.54	Stewardship Area - s.25 Conservation Act 1987
2798572	Cranky Tom Conservation Area proposed Scenic Reserve	50.05	Stewardship Area - s.25 Conservation Act 1987
2798573	Boundary Creek Conservation Area proposed Scenic Reserve	19.24	Stewardship Area - s.25 Conservation Act 1987
2798574	Conservation Area Black Birch Creek Mouth	2.03	Stewardship Area - s.25 Conservation Act 1987
2798578	Balmoral Fire Lookout Conservation Area	38.66	Stewardship Area - s.25 Conservation Act 1987
2798581	Pahau River Marginal Strip	0.42	Fixed Marginal Strip - s.24(3) Conservation Act 1987
2798582	Hurunui River Marginal Strip	0.46	Fixed Marginal Strip - s.24(3) Conservation Act 1987
2798584	Hurunui Marginal Strip	25.92	Fixed Marginal Strip - s.24(3) Conservation Act 1987
2798588	Hurunui River Marginal Strip	15.94	Fixed Marginal Strip - s.24(3) Conservation Act 1987
2798589	Hurunui River Marginal Strip	16.99	Moveable Marginal Strip - s.24(1) & (2) Conservation Act 1987
2798591	Waikari River Marginal Strip	1.45	Moveable Marginal Strip - s.24(1) & (2) Conservation Act 1987
2798593	Hurunui Marginal Strip	0.12	Moveable Marginal Strip - s.24(1) & (2) Conservation Act 1987
2798612	Conservation Area Ashley Riverbed Karalea	0.98	Stewardship Area - s.25 Conservation Act 1987
2798650	Gravel Reserve Punawai	0.32	Local Purpose Reserve - s.23 Reserves Act 1977
2798651	Gravel Reserve Tormore	0.28	Local Purpose Reserve - s.23 Reserves Act 1977
2798652	Gravel Reserve Huyton	3.34	Local Purpose Reserve - s.23 Reserves Act 1977
2798672	Conservation Area Pacific Ocean Foreshore Amberley Beach	6.96	Stewardship Area - s.25 Conservation Act 1987
2798673	Amberley Beach Marginal Strip	51.62	Fixed Marginal Strip - s.24(3) Conservation Act 1987
2798674	Motunau Beach Marginal Strip	3.56	Fixed Marginal Strip - s.24(3) Conservation Act 1987
2798675	Conservation Area Teviotdale Archeological Site	0.06	Stewardship Area - s.25 Conservation Act 1987
2798676	Motunau River Marginal Strip	21.66	Fixed Marginal Strip - s.24(3) Conservation Act 1987
2798678	Waipara River Marginal Strip	1.26	Moveable Marginal Strip - s.24(1) & (2) Conservation Act 1987
2798679	Mount Cass Road Marginal Strip	8.62	Moveable Marginal Strip - s.24(1) & (2) Conservation Act 1987
2798680	Waipara River Marginal Strip	0.93	Moveable Marginal Strip - s.24(1) & (2) Conservation Act 1987
2798681	Waipara River Marginal Strip	4.75	Moveable Marginal Strip - s.24(1) & (2) Conservation Act 1987
2798682	Waipara River Marginal Strip	5.24	Moveable Marginal Strip - s.24(1) & (2) Conservation Act 1987
2799144	Douglas Road Marginal Strip	7.91	Moveable Marginal Strip - s.24(1) & (2) Conservation Act 1987
2799145	Kowai River South Branch Marginal Strip	2.67	Moveable Marginal Strip - s.24(1) & (2) Conservation Act 1987
2799146	Stockdills Road Marginal Strip	1.27	Moveable Marginal Strip - s.24(1) & (2) Conservation Act 1987
2799149	Stockdills Road Marginal Strip	2.73	Moveable Marginal Strip - s.24(1) & (2) Conservation Act 1987
2799150	Kowai River North Branch Marginal Strip	1.73	Fixed Marginal Strip - s.24(3) Conservation Act 1987
2799154	No 2 Creek Marginal Strip	4.96	Moveable Marginal Strip - s.24(1) & (2) Conservation Act 1987
2799155	No 2 Creek Marginal Strip	2.82	Moveable Marginal Strip - s.24(1) & (2) Conservation Act 1987
2799156	Archers Stream Marginal Strip	19.92	Fixed Marginal Strip - s.24(3) Conservation Act 1987
2799160	Kowai River South Branch Marginal Strip	3.22	Moveable Marginal Strip - s.24(1) & (2) Conservation Act 1987
2799162	Makerikeri River Marginal Strip	0.98	Moveable Marginal Strip - s.24(1) & (2) Conservation Act 1987
2799198	Conservation Area Laidmore	3.19	Stewardship Area - s.25 Conservation Act 1987
2799199	Conservation Area Bobby Stream Stormount	3.55	Stewardship Area - s.25 Conservation Act 1987
2799202	Conservation Area Hillview	0.06	Stewardship Area - s.25 Conservation Act 1987
2799203	Hillview Conservation Area	1.49	Stewardship Area - s.25 Conservation Act 1987
2799211	Gravel Reserve Boundary Road	2.02	Local Purpose Reserve - s.23 Reserves Act 1977
2799212	Conservation Area Lindfield	0.45	Stewardship Area - s.25 Conservation Act 1987
2799214	No 1 Creek Marginal Strip	1.14	Moveable Marginal Strip - s.24(1) & (2) Conservation Act 1987
2799215	Kowhai River South Branch Marginal Strip	45.15	Moveable Marginal Strip - s.24(1) & (2) Conservation Act 1987
2799217	Stony Creek Marginal Strip	14.75	Moveable Marginal Strip - s.24(1) & (2) Conservation Act 1987
2799218	Kowhai River North Branch Marginal Strip	1.82	Moveable Marginal Strip - s.24(1) & (2) Conservation Act 1987
2799224	Kowhai River North Branch Fixed Marginal Strip	1.78	Fixed Marginal Strip - s.24(3) Conservation Act 1987
2799245	Conservation Area Western Terrace Road	0.37	Stewardship Area - s.25 Conservation Act 1987
2799248	Conservation Area Broad Road Craigbank	0.63	Stewardship Area - s.25 Conservation Act 1987
2799249	Conservation Area Broad Road Craigbank	0.20	Stewardship Area - s.25 Conservation Act 1987
2799274	Conservation Area - Ashley River Margin Muirburn	5.36	Stewardship Area - s.25 Conservation Act 1987
2799276	Conservation Area - Ashley River Margin Muirburn	1.74	Stewardship Area - s.25 Conservation Act 1987
2799277	Ashley River Conservation Reserve	9.35	Local Purpose Reserve - s.23 Reserves Act 1977
2799279	Conservation Area Ashley River Mouth	10.74	Stewardship Area - s.25 Conservation Act 1987
2799297	Washpen Creek Marginal Strip	0.60	Fixed Marginal Strip - s.24(3) Conservation Act 1987
2799298	Washpen Creek Marginal Strip	1.15	Fixed Marginal Strip - s.24(3) Conservation Act 1987
2799299	Conservation Area Waipara Gorge	19.99	Stewardship Area - s.25 Conservation Act 1987
2799376	Conservation Area Waitohi Riverbed Horsley Downs	107.66	Stewardship Area - s.25 Conservation Act 1987
2799379	Gravel Reserve Shimmins Road	0.40	Local Purpose Reserve - s.23 Reserves Act 1977
2799383	Gravel Reserve Lake Sumner Road	0.41	Local Purpose Reserve - s.23 Reserves Act 1977
2799384	Gravel Reserve Medbury Road	0.40	Local Purpose Reserve - s.23 Reserves Act 1977
2799385	Gravel Reserve Medbury Road	0.44	Local Purpose Reserve - s.23 Reserves Act 1977
2799386	Gravel Reserve Medbury Road	0.38	Local Purpose Reserve - s.23 Reserves Act 1977
2799388	Gravel Reserve Hobans Road	0.35	Local Purpose Reserve - s.23 Reserves Act 1977
2799390	Gravel Reserve Gilberts Road	0.42	Local Purpose Reserve - s.23 Reserves Act 1977

Inventory of public conservation land and waters
 Canterbury
 Map table 7.9

NaPALIS ID	Protected Area Name	Area (ha)	Legal Description
2799393	Gravel Reserve Silverhope Road	0.40	Local Purpose Reserve - s.23 Reserves Act 1977
2799402	Cemetery Reserve Waikari	0.85	Local Purpose Reserve - s.23 Reserves Act 1977
2799404	Gravel Reserve Broxton Road	2.08	Local Purpose Reserve - s.23 Reserves Act 1977
2799405	Weka Pass Historic Reserve	0.50	Historic Reserve - s.18 Reserves Act 1977
2799422	Hurunui River Marginal Strip	7.79	Fixed Marginal Strip - s.24(3) Conservation Act 1987
2799425	Medbury Scientific Reserve	55.60	Scientific Reserve - s.21 Reserves Act 1977
2799426	Hurunui River Marginal Strip	38.41	Fixed Marginal Strip - s.24(3) Conservation Act 1987
2799427	Waitohi River Marginal Strip	6.12	Fixed Marginal Strip - s.24(3) Conservation Act 1987
2799429	Hurunui River Marginal Strip	33.28	Moveable Marginal Strip - s.24(1) & (2) Conservation Act 1987
2799431	Waitohi River Marginal Strip	2.19	Moveable Marginal Strip - s.24(1) & (2) Conservation Act 1987
2799496	Otukaikino Government Purpose Reserve Wildlife Management	10.28	Government Purpose Reserve - s.22 Reserves Act 1977
2799739	Marginal Strip Kaikainui Stream	0.14	Moveable Marginal Strip - s.24(1) & (2) Conservation Act 1987



Map 7.9 Inventory of public conservation land and waters

Conservation Management Strategy
Canterbury (Waitaha)

Map 9 of 23

Conservation unit data is current as of 31/10/2015



Inventory of public conservation land and waters
 Canterbury
 Map table 7.10

NaPALIS ID	Protected Area Name	Area (ha)	Legal Description
2795739	Drain Reserve Crystal Brook	1.17	Local Purpose Reserve - s.23 Reserves Act 1977
2795742	Quarry Reserve Jed Vale	0.54	Local Purpose Reserve - s.23 Reserves Act 1977
2795747	Gore Bay Scenic Reserve	62.80	Scenic Reserve - s.19(1)(a) Reserves Act 1977
2795750	Conservation Area Pacific Ocean Foreshore Gore Bay	0.89	Stewardship Area - s.25 Conservation Act 1987
2795753	Reservoir Reserve Port Robinson	2.45	Local Purpose Reserve - s.23 Reserves Act 1977
2795756	Manuka Bay Scenic Reserve	40.68	Scenic Reserve - s.19(1)(a) Reserves Act 1977
2795759	Recreation Reserve Manuka Downs	2.72	Recreation Reserve - s.17 Reserves Act 1977
2795761	Drain Reserve Cheviot	6.81	Local Purpose Reserve - s.23 Reserves Act 1977
2795765	Conservation Area Pacific Ocean Foreshore Napenape	36.24	Stewardship Area - s.25 Conservation Act 1987
2795767	Shag Rock Scenic Reserve	37.81	Scenic Reserve - s.19(1)(a) Reserves Act 1977
2795768	Local Purpose Reserve Cheviot Coast Proposed Scenic Reserve	19.26	Local Purpose Reserve - s.23 Reserves Act 1977
2795771	Cheviot Marginal Strip	0.43	Fixed Marginal Strip - s.24(3) Conservation Act 1987
2795772	Jed River Marginal Strip	5.15	Fixed Marginal Strip - s.24(3) Conservation Act 1987
2795773	Jed River Marginal Strip	1.13	Fixed Marginal Strip - s.24(3) Conservation Act 1987
2795774	Jed River Marginal Strip	1.57	Fixed Marginal Strip - s.24(3) Conservation Act 1987
2795777	Gore Bay Marginal Strip	0.30	Fixed Marginal Strip - s.24(3) Conservation Act 1987
2795778	Cheviot Marginal Strip	0.30	Fixed Marginal Strip - s.24(3) Conservation Act 1987
2795780	Woolshed Stream Marginal Strip	0.82	Fixed Marginal Strip - s.24(3) Conservation Act 1987
2796054	Drain Reserve Crystal Brook	3.27	Local Purpose Reserve - s.23 Reserves Act 1977
2798533	Gravel Reserve Darrocks Road	0.60	Local Purpose Reserve - s.23 Reserves Act 1977
2798535	Gravel Reserve Antrim Hills	1.39	Local Purpose Reserve - s.23 Reserves Act 1977
2798536	Gravel Reserve Kalkadoon	0.06	Local Purpose Reserve - s.23 Reserves Act 1977
2798537	Community Buildings Reserve Domett	0.10	Local Purpose Reserve - s.23 Reserves Act 1977
2798538	Community Buildings Reserve Domett	0.10	Local Purpose Reserve - s.23 Reserves Act 1977
2798575	Landing Place Reserve Gum Tree Gully	6.40	Local Purpose Reserve - s.23 Reserves Act 1977
2798576	Napenape Scenic Reserve	52.56	Scenic Reserve - s.19(1)(a) Reserves Act 1977
2798577	Conservation Area Pacific Ocean Foreshore Gum Tree Gully	14.54	Stewardship Area - s.25 Conservation Act 1987
2798590	Hurunui Marginal Strip	5.40	Moveable Marginal Strip - s.24(1) & (2) Conservation Act 1987
2798592	Crystal Brook Marginal Strip	1.01	Fixed Marginal Strip - s.24(3) Conservation Act 1987

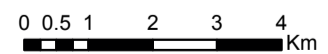


Map 7.10 Inventory of public conservation land and waters

Conservation Management Strategy
 Canterbury (Waitaha)

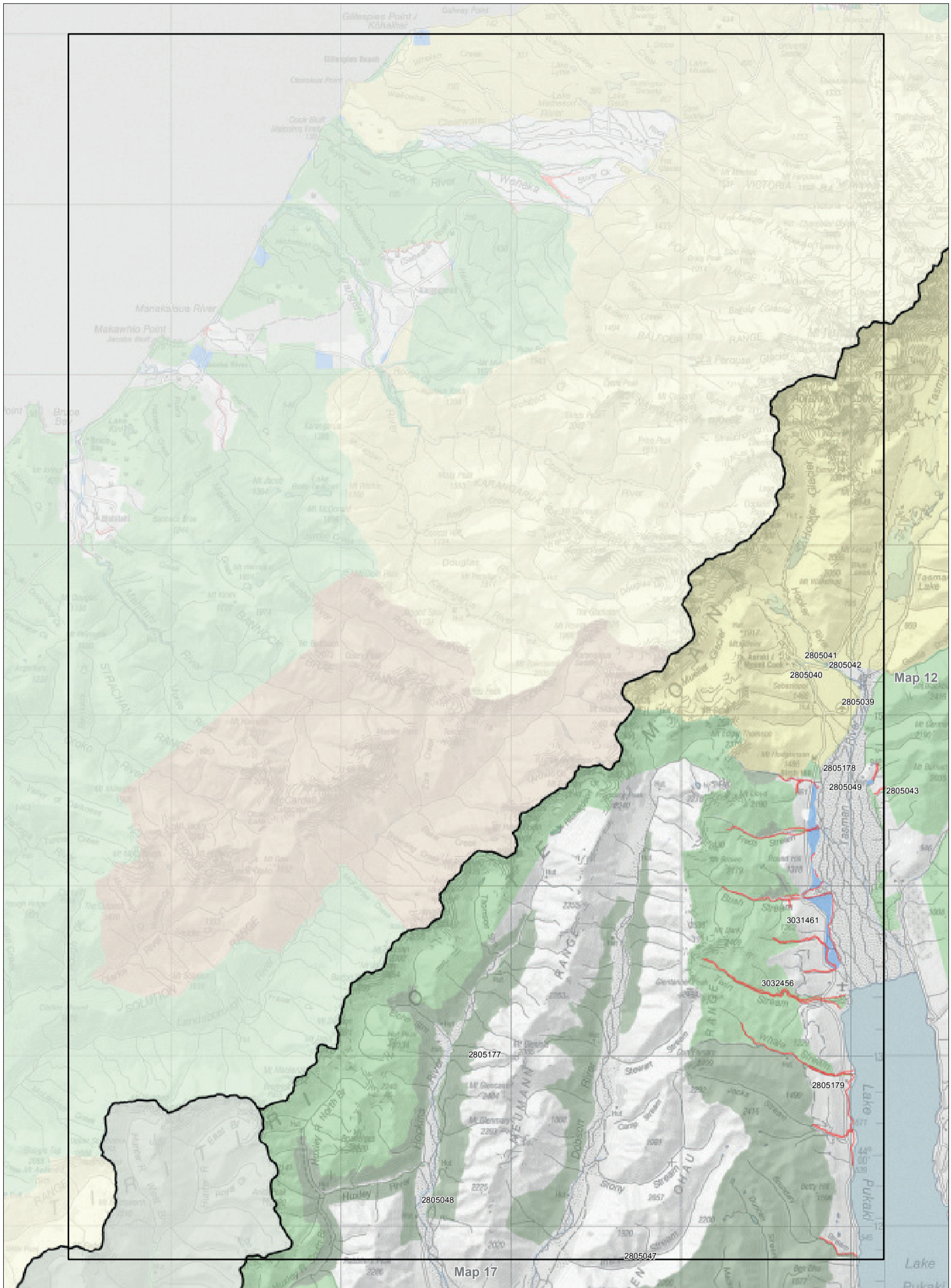
Map 10 of 23

Conservation unit data is current as of 31/10/2015



Inventory of public conservation land and waters
 Canterbury
 Map table 7.11

NaPALIS ID	Protected Area Name	Area (ha)	Legal Description
2805039	Conservation Area Aoraki/Mount Cook Village Road	40.27	Stewardship Area - s.25 Conservation Act 1987
2805040	Recreation Reserve Aoraki	2.05	Recreation Reserve - s.17 Reserves Act 1977
2805041	Recreation Reserve Aoraki	1.20	Recreation Reserve - s.17 Reserves Act 1977
2805042	Recreation Reserve Aoraki	0.62	Recreation Reserve - s.17 Reserves Act 1977
2805047	Ruataniwha Conservation Park	37100.16	Conservation Park - s.19 Conservation Act 1987
2805048	Ruataniwha Conservation Area	35734.23	Stewardship Area - s.25 Conservation Act 1987
2805049	Local Purpose Reserve Public Utility Black Point	10.11	Local Purpose Reserve - s.23 Reserves Act 1977
2805177	Conservation Area Hopkins River	84.93	Stewardship Area - s.25 Conservation Act 1987
2805178	Conservation Area Birch Hill Flat	80.22	Stewardship Area - s.25 Conservation Act 1987
2805179	Ferintosh Marginal Strip	32.41	Moveable Marginal Strip - s.24(1) & (2) Conservation Act 1987
3031461	Glentanner Scenic Reserve	461.27	Scenic Reserve - s.19(1)(a) Reserves Act 1977
3032456	Glentanner Tenure Review Marginal Strips	146.39	Fixed Marginal Strip - s.24(3) Conservation Act 1987



Map 7.11 Inventory of public conservation land and waters

Conservation Management Strategy
 Canterbury (Waitaha)

Map 11 of 23

Conservation unit data is current as of 31/10/2015

