



St James public conservation lands reclassification

Information Meeting

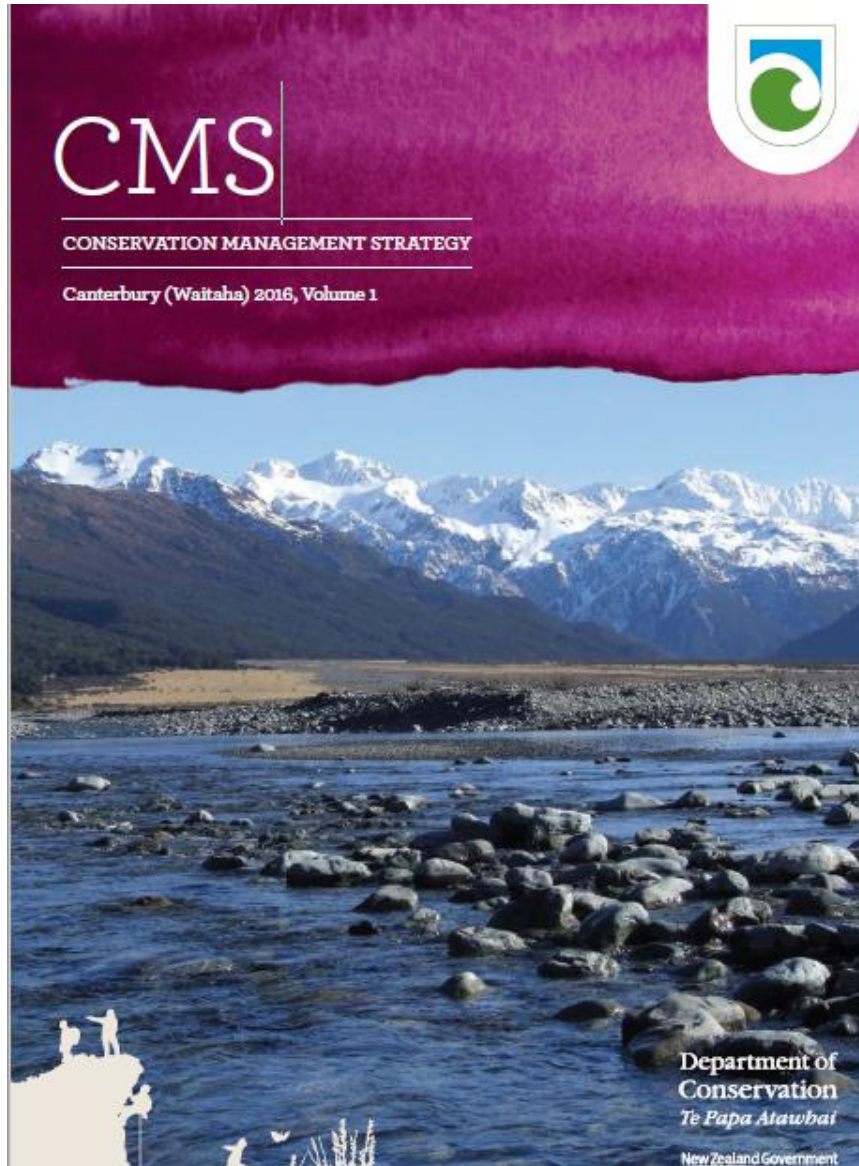
History of the St James Conservation Area



- Purchased by the Government in 2008
- Aim to protect natural, physical cultural and values
- Open up the area to outdoor recreation and tourism
- Classified as stewardship land under Section 7 of the Conservation Act 1987



Why is there a reclassification?



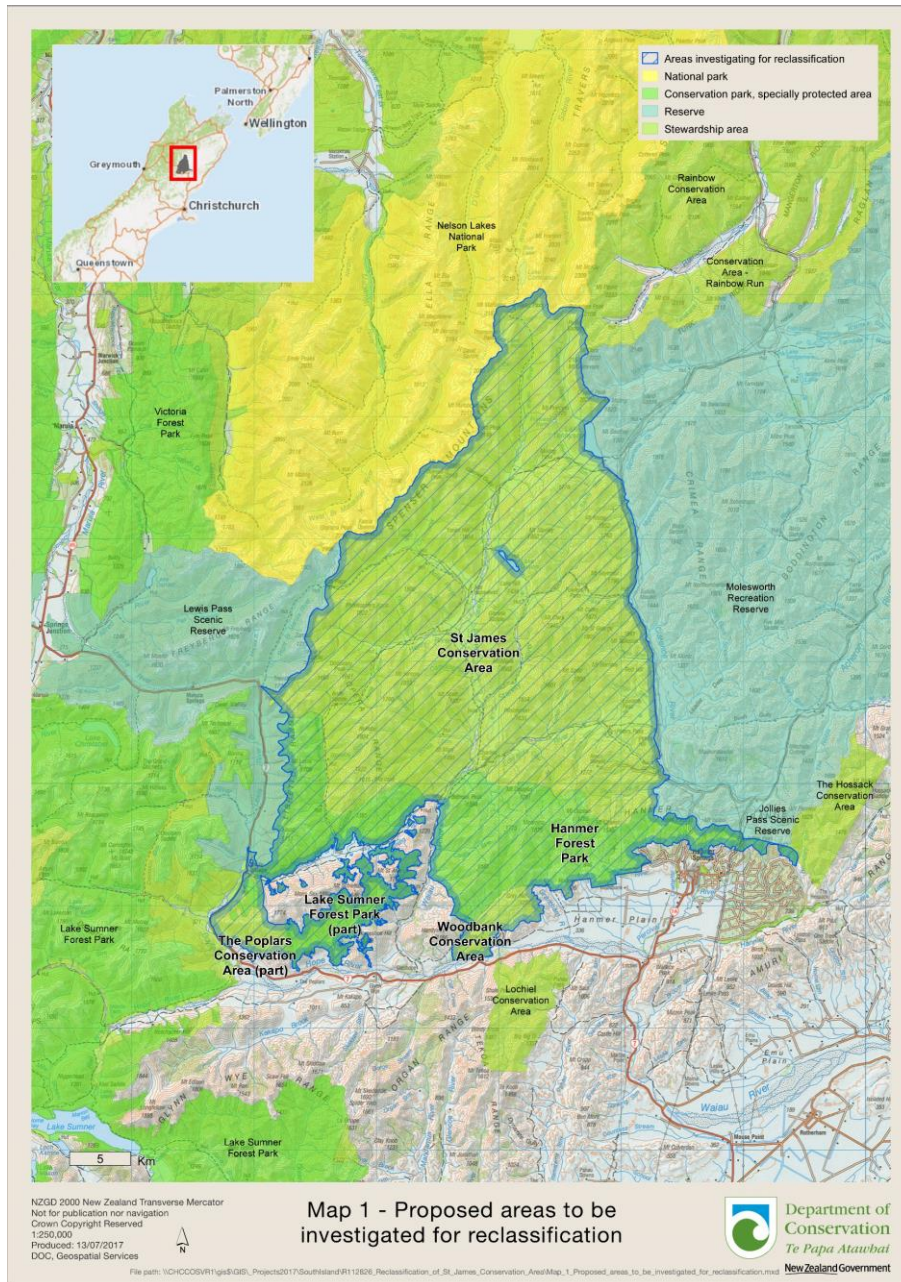
- St James Public Conservation Lands are stewardship land
- Lowest level of protection of any public conservation land
- Canterbury (Waitaha) Conservation Management Strategy 2016 recognises that this does not reflect the conservation values of the lands and waters

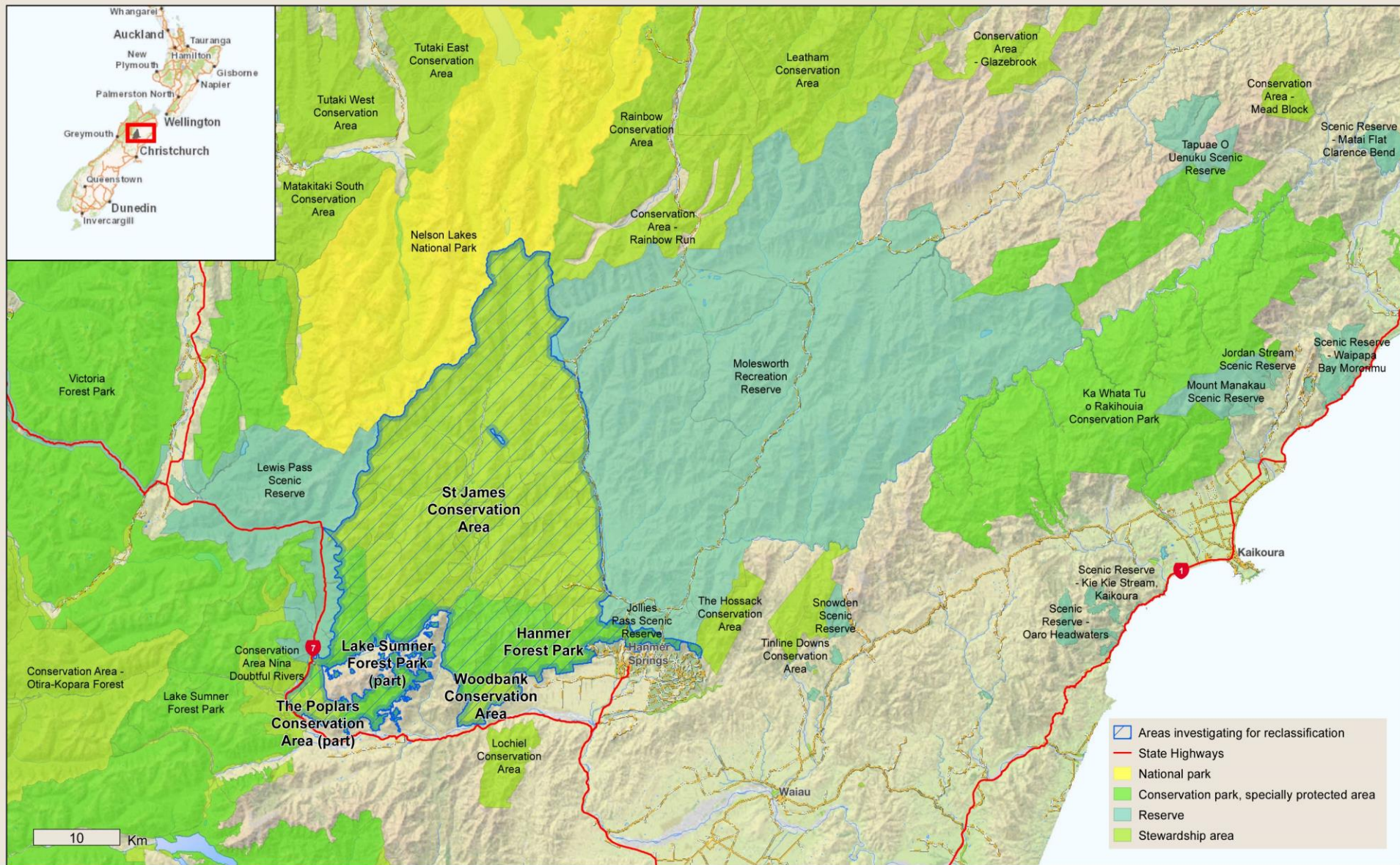


Areas included in the reclassification

- St James Conservation Area (79,300ha)
- Hanmer Forest Park (11,800ha)
- Lake Sumner Forest Park (part – 15,300ha)
- The Poplars Conservation Area (part – 2,100ha)
- Woodbank Conservation Area (2,200ha)

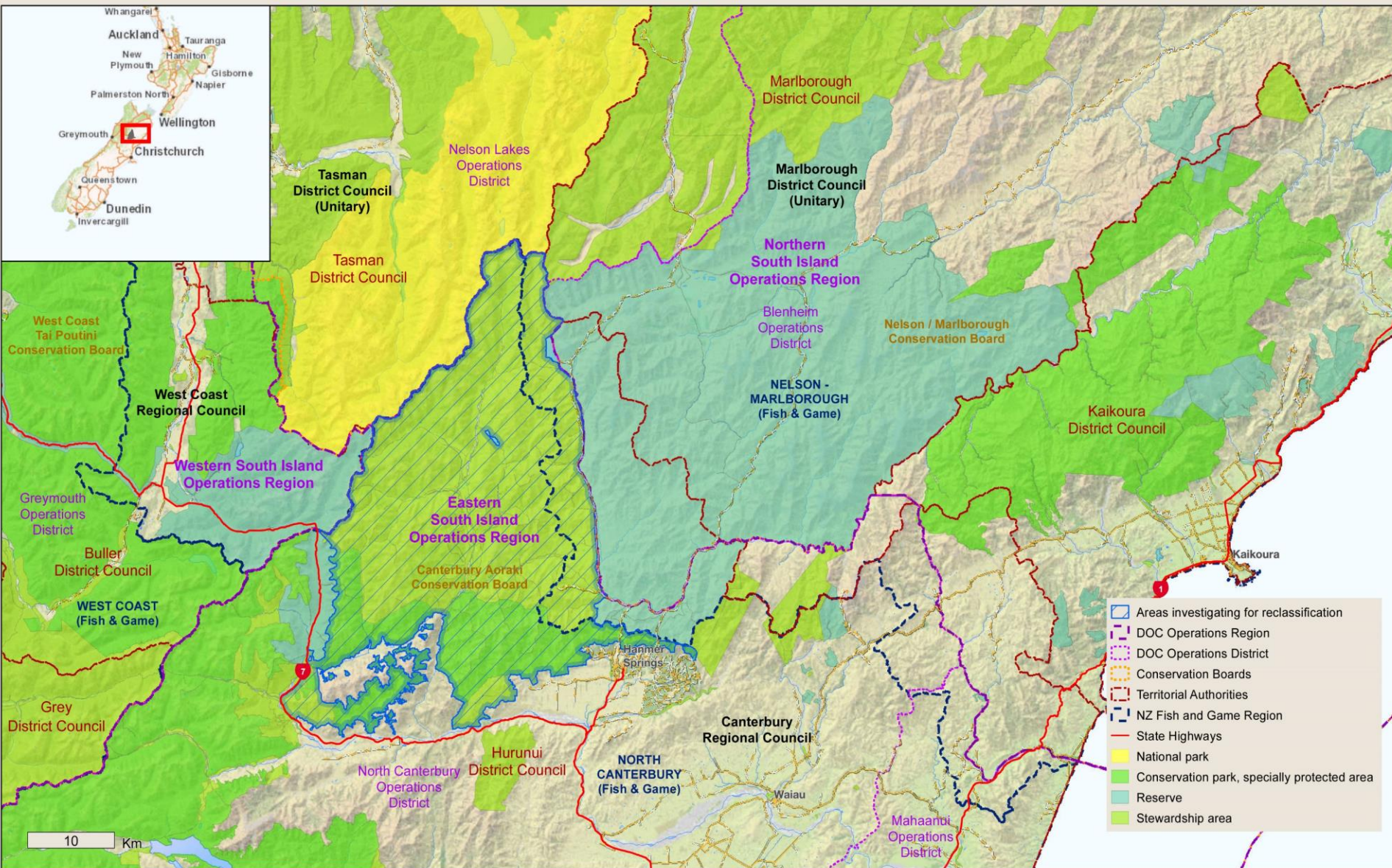
Department of
Conservation
Te Papa Atawhai





Map 3 - Areas adjoining the proposed reclassification areas





NZGD 2000 New Zealand Transverse Mercator
 Not for publication nor navigation
 Crown Copyright Reserved
 1:400,000
 Produced: 13/07/2017
 DOC, Geospatial Services
 © Geographix



Map 4 - Administrative boundaries for the proposed reclassification areas



Land Type Map of St James Conservation Area

Types –

H1 – Braided river and
valley

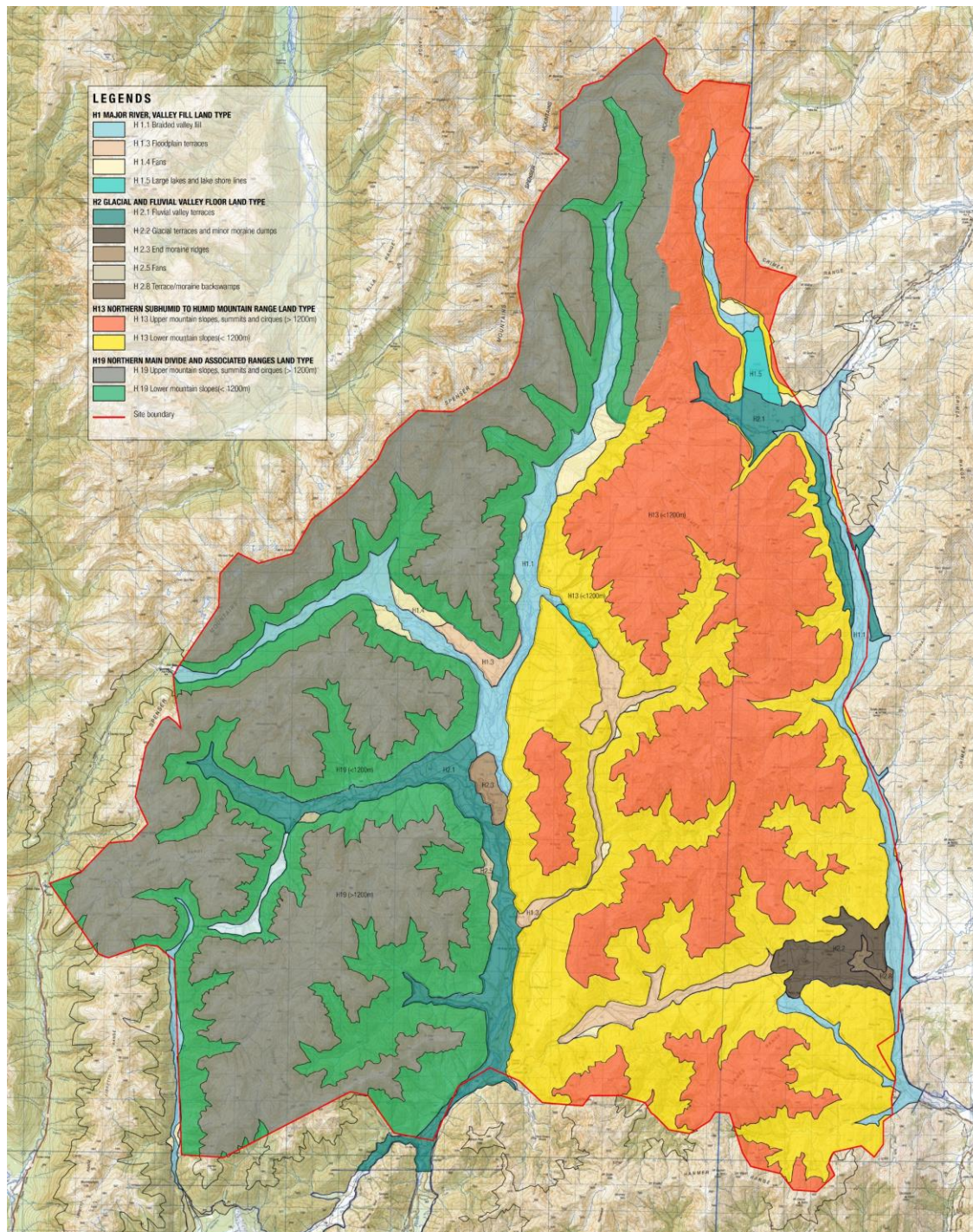
H2 – Glacial and fluvial
valley systems

H13 – Northern
subhumid to humid
mountain ranges

H19 – Northern main
divide

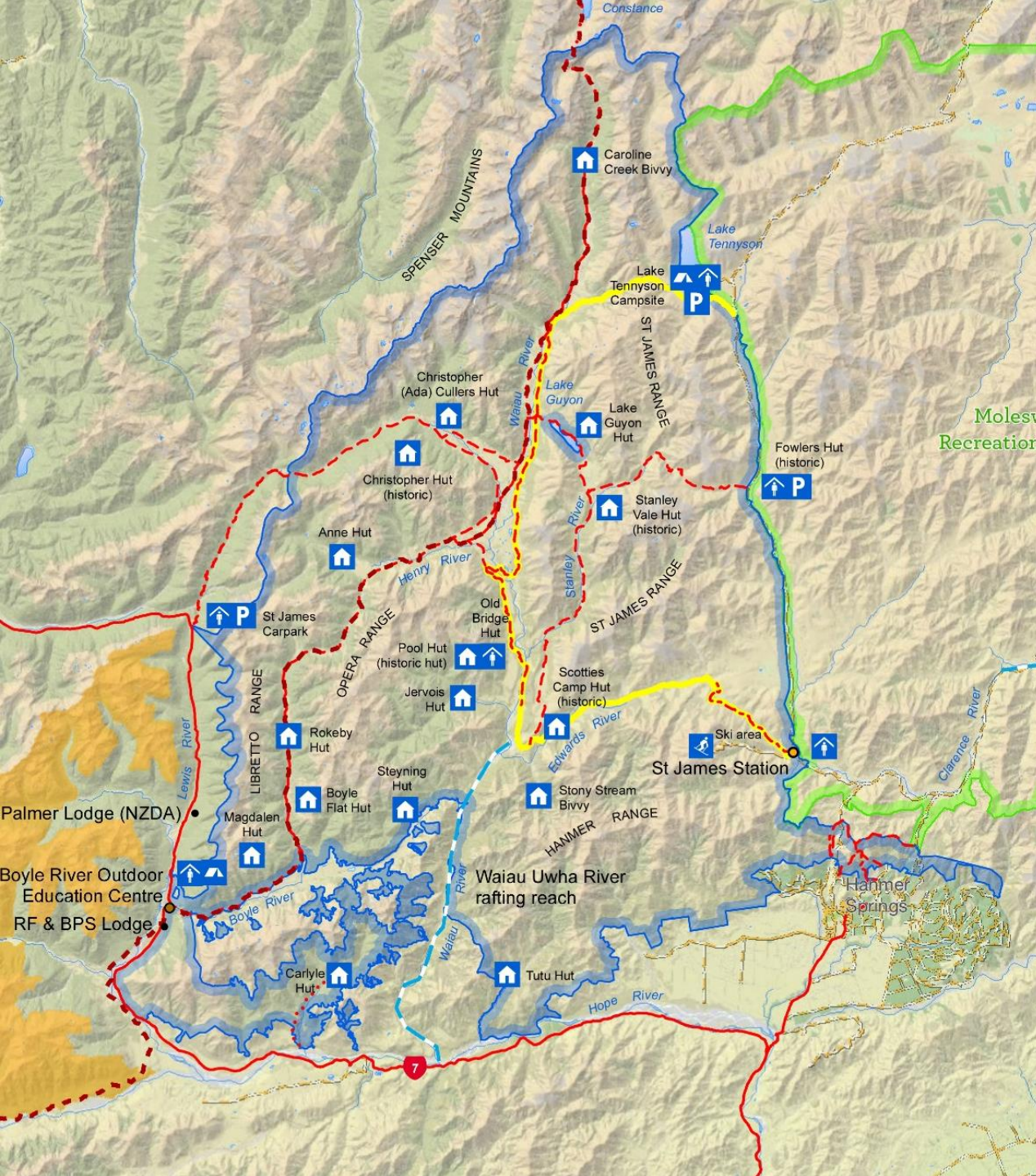
(source Land Cover Data
Base – prepared by Johanna
Blakely, Aleksandra Sheremetieva
and Alexander Eremin – Lincoln
University students)

Department of
Conservation
Te Papa Atawhai





Recreational use in the vicinity of proposed reclassification areas



- Historic sites
- OEC
- Place
- ⛶ Skifield
- 🏠 Hut
- 🛖 Shelter
- P Maintained Area
- 🏕 Campsite
- 🚲 St James cycle trail
- Te Araroa trail
- Kayaking
- Walking track
- Tramping track / Great walk
- ... Route
- State Highways
- 🟢 Molesworth Recreation Reserve
- 🟡 RHA
- 🔵 Areas investigating for reclassification

What does reclassification mean?

- Statutory process that puts a protected area (or part) into a different status, class, type, or overlay than its present one(s)
- Options being considered:
 - National Park (National Parks Act 1980)
 - Reserve (Reserves Act 1977)
 - Conservation Area (Conservation Act 1987)
- Some classes can be further subdivided into different types and/or overlays.
- For example, a Specially Protected Area under the Conservation Area status can be divided into seven different types, such as Conservation Park, Ecological Area or Amenity Area etc.



Understanding status and classification



Table 1 NATIONAL PARKS ACT 1980

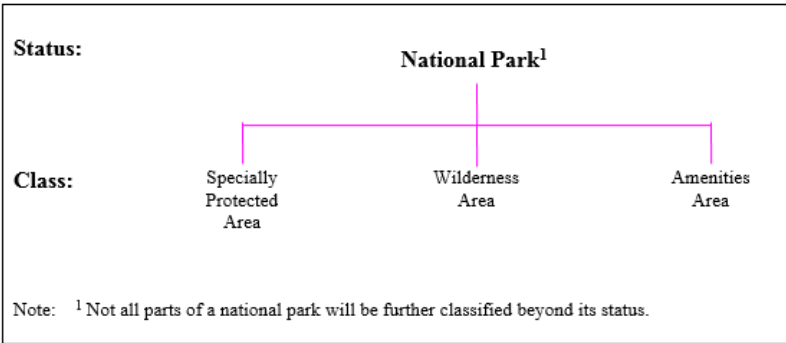


Table 2 CONSERVATION ACT 1987

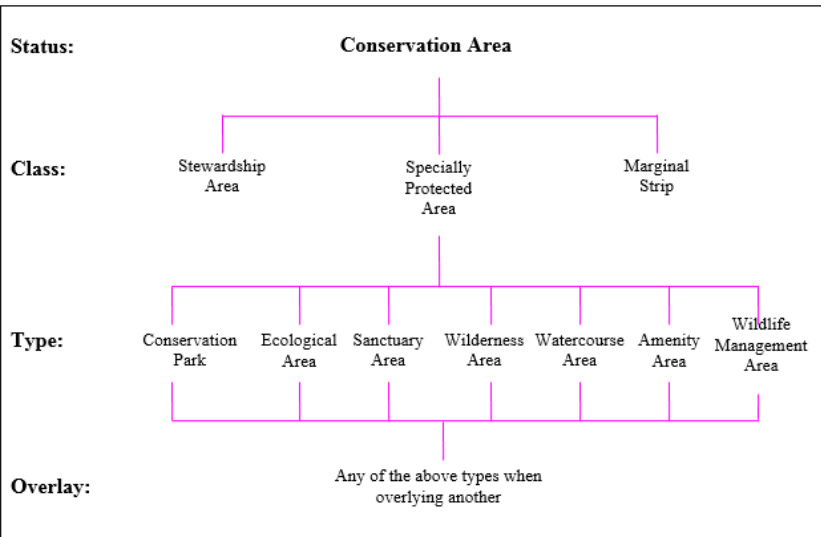
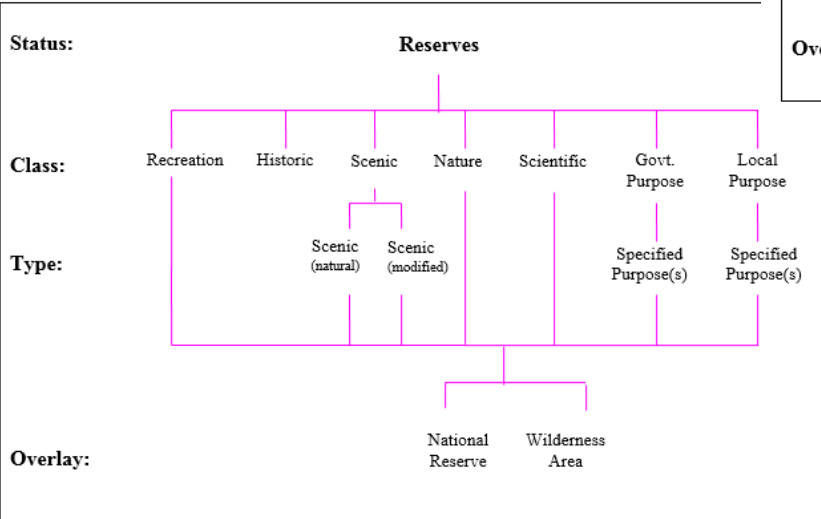


Table 3 RESERVES ACT 1977





Conservation General Policy 2005

Policy 6(b) of the Conservation General Policy provides guidance about the outcomes sought from a classification review.

Subject to statutory requirements, the classification of any public conservation lands may be reviewed from time to time to ensure that the classification of such lands continues to either:

- i. give appropriate protection and preservation for their natural resources, and/or historical and cultural heritage; or*
- ii. give appropriate protection and preservation for their educational, scientific, community, or other special features, for the benefit of the public; or*
- iii. enable integrated conservation management identified in conservation management strategies or plans; or*
- iv. provide for access and enjoyment by the public where that is in accordance with the purposes for which the land is held; or*
- v. reflect the values of public conservation lands that are present; or*
- vi. enable specified places to achieve conservation outcomes in the future.*

<http://www.doc.govt.nz/about-us/our-policies-and-plans/conservation-general-policy/>



Project phases

Phase 1 Establish and Investigate - Initiate the project, collect information and investigate through consultation, values and classification options (June to mid-August 2017)

Phase 2 Develop - Consider information and develop a draft reclassification proposal (mid-August and September 2017)

Phase 3 Notify - Publicly notify the draft reclassification proposal, submissions, hearing (30 September notify, submissions close 1 December 2017, hearing mid-January 2018)

Phase 4 Recommendations and Decision-making - Analysis of all information, recommended proposal considered by Minister (Late January to late March 2018)

Phase 5 Implementation - Statutory and on-the-ground implementation of any reclassification decision (after decision-making, approx. April 2018 onwards)



How can you be involved?

Send us information that you hold about the natural heritage, cultural, historic heritage and recreation, features, values, use, aspirations and issues for areas within the land parcels & their relationship with surrounding areas.

Consider whether the areas proposed to be within the reclassification project are appropriate, i.e. should the four other proposed areas be reviewed along with the St James Conservation Area? Let us know your views about this.

Tell us what classification/s you consider would be appropriate for the public conservation land (or parts of the land) being investigated, having regard to its conservation values.

Please send information by **11 August 2017** to the project email address: stjamesreclassification@doc.govt.nz



Thanks for listening

Any questions?