

About the Rimutaka Forest Park kiwi project

The Rimutaka Forest Park Trust has released North Island brown kiwi into the Turere stream catchment north of the Orongorongo Track. This is an area of approximately 1,000 hectares of the total 14,800 hectares of Rimutaka Forest Park. The project is supported by the community and has been made possible by sponsorship.

The Trust has been controlling stoats and other predators in the 1000-ha area since 2004. This leaves dogs as the main risk needing management before kiwis can be released. To create a safe habitat for kiwi it is necessary to exclude dogs from the Turere Stream catchment, and control their ability to roam into there from the surrounding tracks.

Dogs and kiwi

Dogs are a major threat to kiwi. Kiwi have a strong scent, are flightless, and occupy burrows during the day, so they are especially vulnerable to attack by dogs. Their sternum (breastbone), which anchors the wing muscles used for flight in other birds, is very light and weak, and is easily crushed by a dog's jaws.



North Island brown kiwi. Photo: Rogan Colbourne.

More information

For information about controlling dogs in Rimutaka Forest Park:

Poneke Area Office

P.O. Box 5086, Wellington. Ph 04-472 5821.

To book a hut in the Orongorongo Valley, go to the on-line booking system at: <http://booking.doc.govt.nz>

For general information and hunting permits:

DOC Wellington Visitor Centre

18-32 Manners St,
P.O. Box 10-420, Wellington 6143.
Ph: 04-384 7770
E-mail: wellingtonvc@doc.govt.nz.

Safety

If you think there is a safety hazard in a conservation area, call DOC HOTline or the nearest DOC office.

DOC HOTline
0800 362 468
Report any safety hazards or
conservation emergencies
For fire and search and rescue call 111

Published by
Department of Conservation
Poneke Area
P.O. Box 5086
Wellington

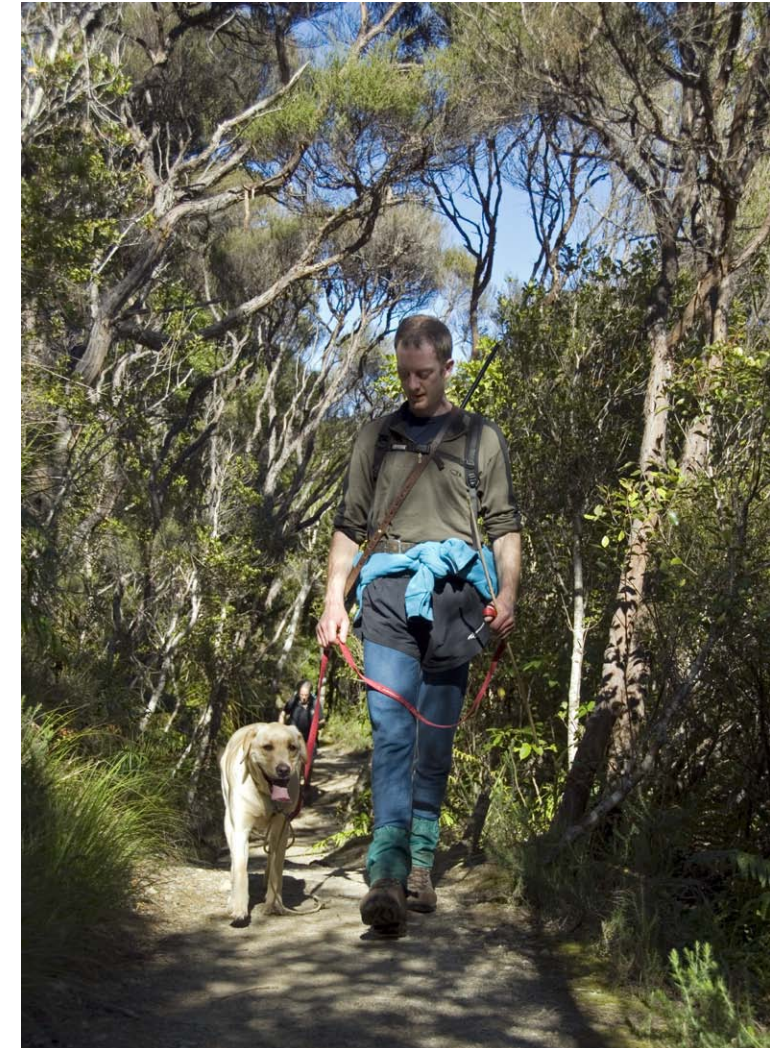
May 2009

newzealand.govt.nz



Controlling dogs in Rimutaka Forest Park

MAY 2009



Department of Conservation
Te Papa Atawhai

Dog control

The 'No dog' requirements of the Conservation Act are strictly enforced within the Turere stream catchment. Recreational hunting by permit issued under the Conservation Act is allowed, but dogs are excluded from the permits.



Areas of Rimutaka Forest Park requiring dogs to be kept on a lead at all times (see map)

Signs mark the areas where dogs must be on a lead

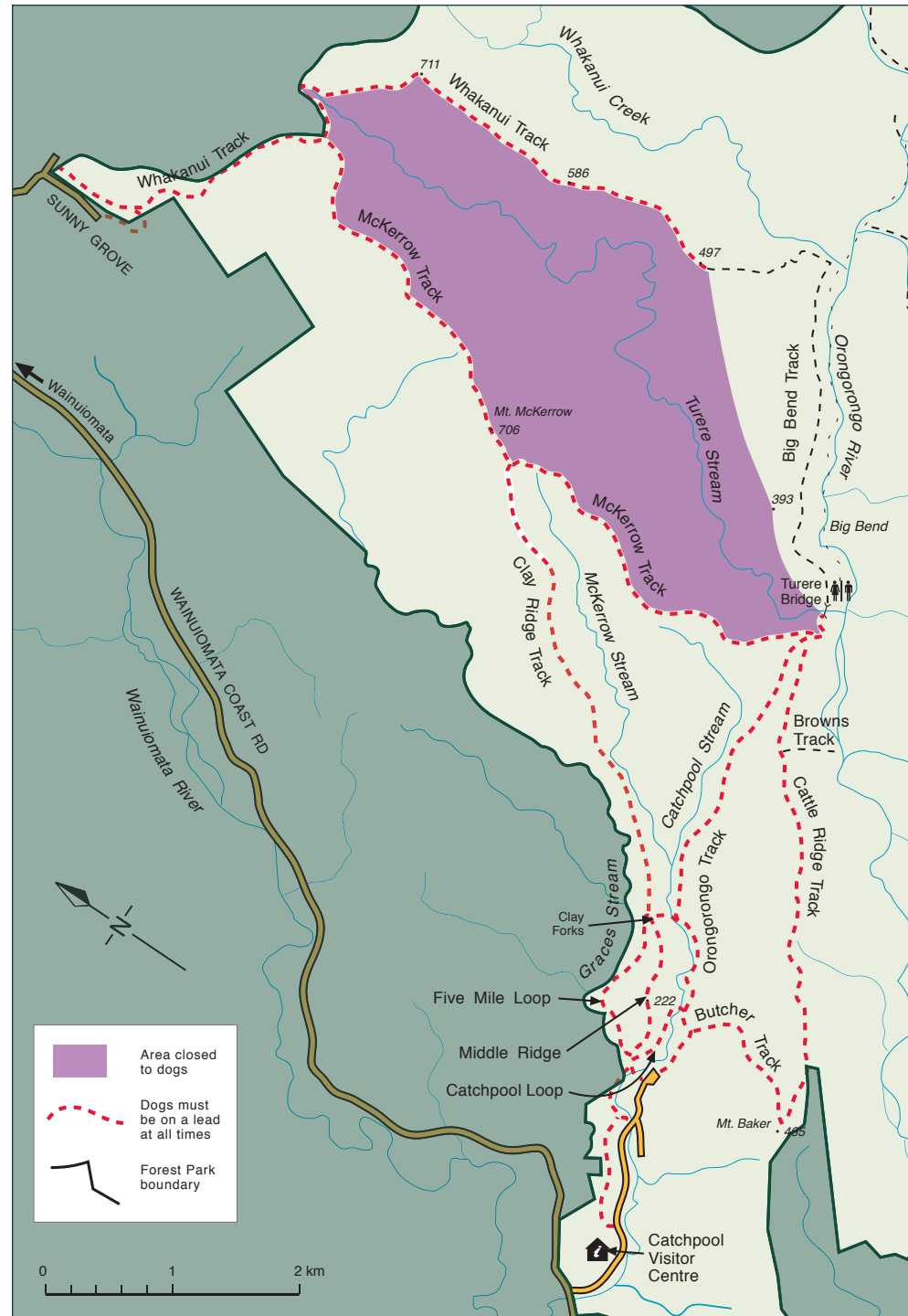
1. The entire Catchpool Valley from its entrance at Coast Road to the upper car park, including all walks and tracks, picnic and camping areas except for the designated 'dog exercise area'
2. Whakanui Track from its start at Sunny Grove road end in Wainuiomata, for approximately three-quarters of its length to the Orongorongo River
3. McKerrow Track, Clay Ridge Track, Butcher Track, Cattle Ridge Track, and Orongorongo Track in their entirety



Area of Catchpool Valley where dogs may be exercised off a lead

Signs mark the area where dogs may be off a lead

Between the road and Catchpool Stream opposite the visitor centre.



Area of Rimutaka Forest Park closed to dogs (see map)

Signs mark the areas closed to dogs.

The Turere Stream catchment from its headwaters to the confluence with the Orongorongo River. This is bounded by but does not include the Whakanui Track and McKerrow Track