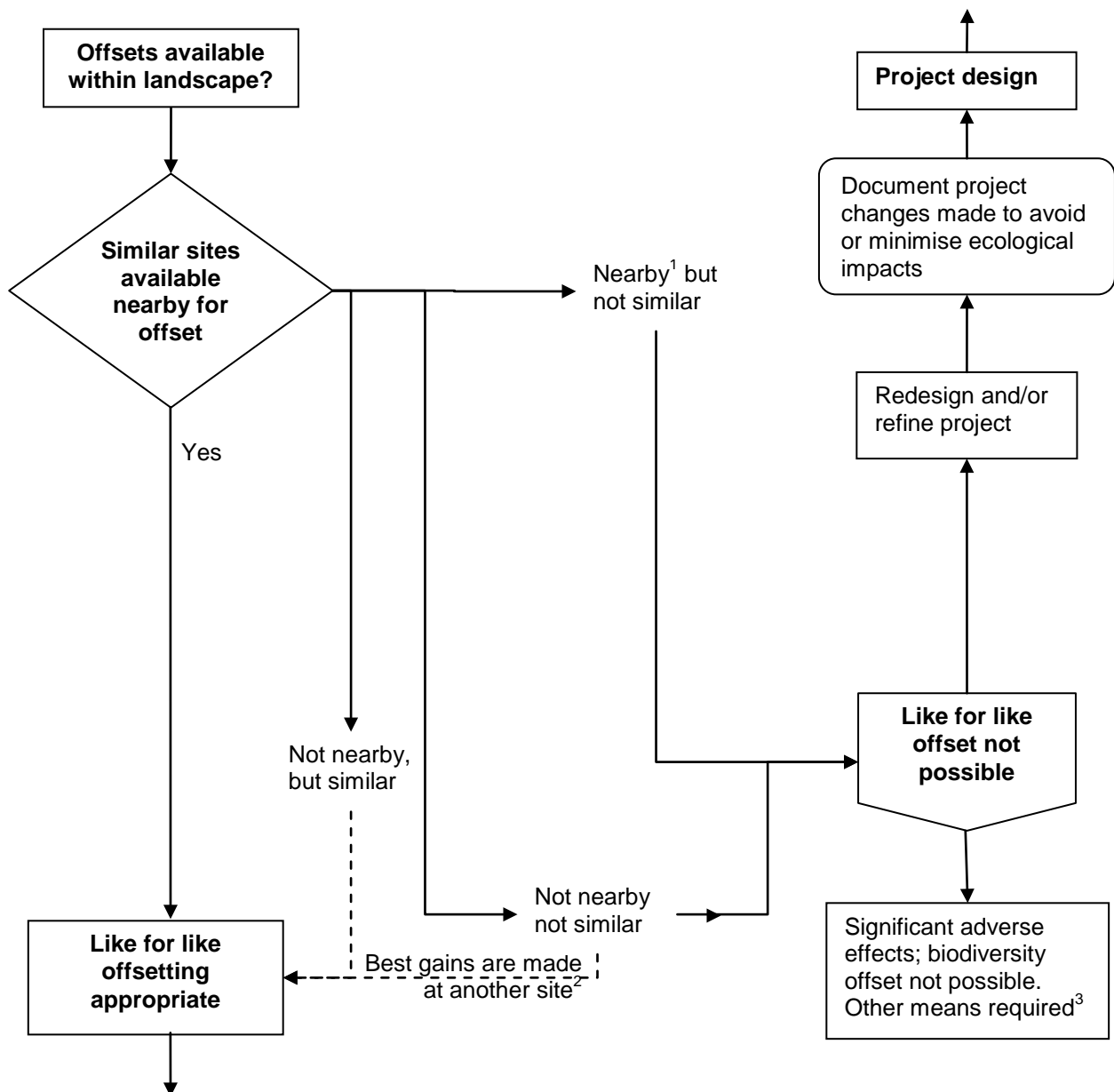


Decision to investigate biodiversity offsetting—landscape and site



[Back to Decision Tree](#)

1. Nearby is likely to be defined and constrained through discussion with stakeholders and peers. For example, a district council may wish to see the offset occur within its territorial boundaries, or within a catchment.
2. For example, when pest control to increase breeding success is best undertaken at the main breeding population of a migratory bird.
3. This project cannot achieve like for like no net loss for significant residual effects. Consider stakeholder-agreed trade up if values lost are low. Otherwise, refine project or consider whether legislative tests can still be met through applying other forms of mitigation/compensation.