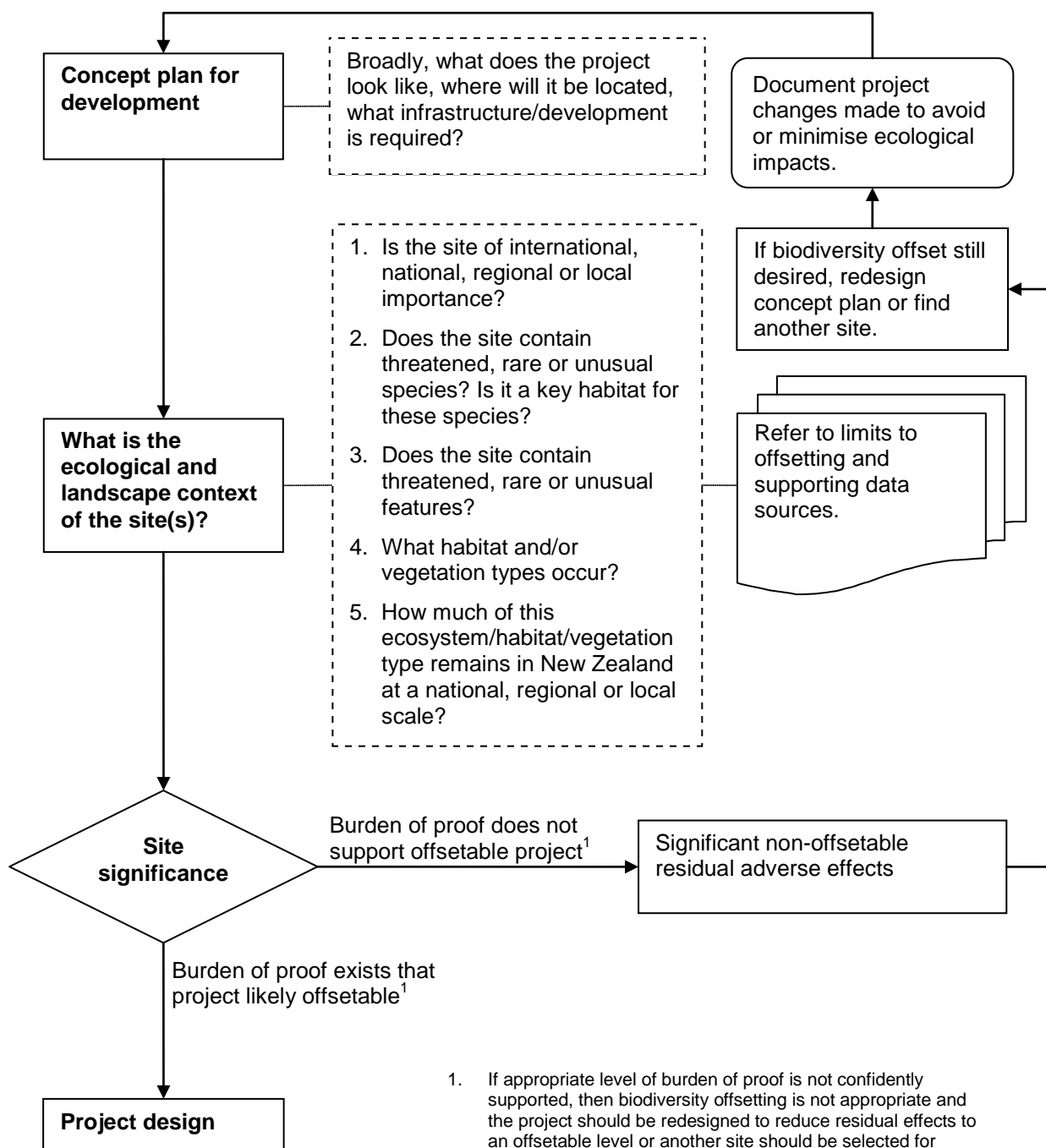


Feasibility analysis—initial development/project site assessment

Some or all of an initial site assessment may be able to be completed as a desktop exercise. However, if little or no existing data is available, then a limited amount of survey work will be required. More field work and feasibility analysis will be required for detailed project design.



1. If appropriate level of burden of proof is not confidently supported, then biodiversity offsetting is not appropriate and the project should be redesigned to reduce residual effects to an offsetable level or another site should be selected for projects intending to provide a biodiversity offset. See: [Limits to Offsetting in New Zealand](#)