

Conservation volunteer activities

Southland, Fiordland and Otago
2025-2026



Department of
Conservation
Te Papa Atawhai

Contents

Introduction.....4

What to expect..... 4

What to bring..... 5

Registration..... 5

Southland, Fiordland and Otago map6

Southland, Fiordland and Otago conservation
volunteer activities7

1. Stewart Island/Rakiura – pukunui/southern New Zealand
dotterel project 8

2. Ulva Island – incursion support..... 10

3. Stewart Island/Rakiura – annual hut maintenance 12

4. Papatowai Campsite – facility maintenance..... 13

5. Hollyford valley – track and hut maintenance..... 15

6. Southern Islands Quarantine Store – maintenance 16

7. Sandfly Bay – wildlife viewing ranger 18

8. Waikaia Forest – track maintenance and historic water
race restoration 19

9. Nugget Point Lighthouse Reserve – summer rangers..... 20

10. Ulva Island – summer rangers 22

11. Stewart Island/Rakiura – hut rangers 24

12. Stewart Island/Rakiura – dune restoration..... 26

13. Southland – backcountry track maintenance..... 28

14. Milford Track – track and hut maintenance 29

15. Mason Bay – historic site maintenance 31

16. Southland – preservation of historic relics 32

17. Skippers Point School – maintenance..... 34

18. Fiordland – lakeside hut maintenance 35

19. Port Pegasus/Pikihatiti – historic tin-mining site maintenance .. 36

20. Burwood Takahē Centre 38

Other volunteer opportunities..... 40

Bluff Hill Motupōhue Environment Trust 41

Coal Island/Te Puka Hereka 42

Coastal Otago 43

Hollyford Conservation Trust – Te Roopu Manaaki
o Whakatipu Waitai 44

Lower Clutha planting days 45

Mamaku Point Conservation Trust 46

Omaui Landcare Charitable Trust 47

Orokonui Living Legends 48

Otatara Landcare Group 49

Pomona Island Charitable Trust..... 50

Southland Community Nursery and Education Centre..... 51

Stewart Island/Rakiura Community and Environment Trust
(SIRCET) 52

SIRCET Community Native Plant Nursery 53

Whakatipu Reforestation Trust..... 54

Whakatipu Wildlife Trust (WWT)..... 55

Terms and conditions 56

Applying for activities..... 56

Acceptance 56

Cancellation..... 56

Application form57

Introduction

Nau mai, haere mai – welcome to the Department of Conservation's (DOC's) volunteer activities booklet, which describes a variety of different ways you can participate in conservation activities around Southland, Fiordland and Otago. These activities provide an opportunity to learn new skills, meet other people, undertake useful conservation work and enjoy Aotearoa New Zealand's beautiful outdoors.

What to expect

ACCOMMODATION: This is arranged, unless otherwise stated. Volunteers usually stay in basic backcountry huts (outdoor toilets, **no shower**, coal/gas cooking facilities), in DOC houses, on board boats or in tents.

TRANSPORT: This will be arranged from the pickup location to and from the worksite, unless otherwise stated.

FOOD AND COOKING UTENSILS: These are provided, unless otherwise stated. Usually everybody helps to prepare meals.

EQUIPMENT AND TOOLS: These are generally provided, unless otherwise stated.

RECREATION: Meeting people and enjoying their company is an important part of our conservation volunteer activities. Time may be given for participating in recreation activities and visiting local places of interest.

FITNESS LEVEL: Most activities take place outdoors and require a reasonable level of fitness and self-motivation. Assessing the suitability of applicants for activities is at the leaders' discretion.

FITNESS LEVEL GUIDE

Low: Can easily walk for up to 2 hours over flat ground.

Medium: Can comfortably walk with a 5 kg pack for up to 4 hours over uneven ground.

High: Capable of walking with a 10 kg pack for up to 6 hours over uneven ground.

Very high: Experienced at walking with a 10 kg pack for up to 6 hours over uneven ground.

What to bring

Each activity will have its own requirements, so volunteers will be issued with a full equipment list and information pack that is specific to the activity before starting it.

Registration

Some activities include contact details and registration information on the activity page. For all other activities, please complete the form at the back of this booklet or apply on the DOC website (doc.govt.nz/get-involved/volunteer).



Southland, Fiordland and Otago map



Southland, Fiordland and Otago conservation volunteer activities





1

Stewart Island/Rakiura – pukunui/southern New Zealand dotterel project

The pukunui project began in 1990 when there was an estimated population of just over 100 birds left. Numbers increased to an estimated 290 birds in 2009, but unfortunately the population has gradually declined for the past 15 years. The main reason for the decline is predation from a range of species, including harrier hawks, spur-winged plovers, rats, white-tailed deer and, above all, feral cats.

The pukunui team's primary role is to undertake predator control in four key breeding sites on Stewart Island/Rakiura, including Rocky Mountain, Mount Rakeahua, 511 Hill and Table Hill/Tin Range, in order to establish a stable and healthy population and save this rare bird from the brink of extinction.

This is an excellent opportunity for volunteers to experience remote areas of Stewart Island/Rakiura, gain new skills, learn about the biodiversity of the area and contribute to an extremely important recovery project.

Tasks include hut and track maintenance, track cutting, and checking and maintaining traps in and around the pukunui breeding sites, which may involve removing decaying pests from kill traps or dispatching live feral cats in traps. Volunteers may get the opportunity to traverse the Tin Range in search of nests, breeding pairs and pukunui with coloured leg bands.

STEWART ISLAND/ RAKIURA

1–2 volunteers for
3 weeks (two field
trips during this time,
8–9 days per trip)

There may be multiple
opportunities
throughout the year

FITNESS/SKILL LEVEL:

High to very high. Volunteers will be working up to 8 hours per day in all weather conditions. The tracks up to the alpine tops take approximately 4–6 hours to walk and are mostly unmarked, very muddy, overgrown and steep. Volunteers must be agile and capable of climbing uphill with a heavy pack. Previous trapping experience would be

useful and good hand strength is required for setting traps. Carpentry skills would also be very helpful. Volunteers with backcountry experience and navigation skills are preferred. Good eyesight is essential to be able to identify pukunui with coloured leg bands from a distance.

ACCOMMODATION: The pukunui team have three basic huts. Each hut has a gas cooker and can sleep 2–3 people. There is running water available at two of the huts, and a long drop toilet at one of them. There are no showers, power or methods for heating at any of the huts, so having a warm sleeping bag with a comfort rating of 6°C or less is essential.

PICKUP/DROP-OFF LOCATION AND TIMES: Meet at the Rakiura National Park Visitor Centre, Stewart Island/Rakiura. Dates and times will be confirmed with the successful applicants.

CONTRIBUTION TOWARDS FOOD AND TRANSPORT:

There is no charge for this activity. However, volunteers will need to make their own travel arrangements to and from Stewart Island/Rakiura and will also need to provide their own food and accommodation in Oban. Accommodation and food will be provided for volunteers while away on multi-day field trips. Transport from Oban to the work sites will be arranged and may include a helicopter or boat.



Photo: Jasmine Penny

2

Ulva Island – incursion support

Ulva Island is the jewel in the crown of Rakiura National Park. This predator-free sanctuary is just 8 minutes by boat across Paterson Inlet / Whaka a Te Wera from Golden Bay and has abundant birdlife, rich forest, golden-sand beaches and a variety of well-formed walking tracks. This is a rare opportunity to stay on a nationally significant island sanctuary and work towards maintaining its pest-free status. This volunteer opportunity will only be available if a rat incursion occurs on Ulva Island and the team needs additional support.

Tasks will include maintaining visitor facilities, cleaning toilets, supporting biosecurity measures, walking trap lines off public tracks, checking DOC200 traps, changing motor lures and trail camera memory cards, and possibly refreshing brodifacoum bait stations, if required. There will also be ample time for other pursuits, such as bird watching and photography.

STEWART ISLAND/ RAKIURA

1–2 volunteers for a
minimum 2 weeks
per trip

November 2025 –
April 2026

FITNESS / SKILL LEVEL: High.

Volunteers will be expected to walk traplines for 8 hours per day carrying a daypack in conditions similar to backcountry tracks. Volunteers will be dropped off by dinghy to check traps that are only accessible from the coast. Previous experience and knowledge

of trapping and trail camera use would be preferable. Having excellent communication skills and an interest in conservation are essential. Please indicate your availability and any skills or qualifications relevant to this opportunity on your application form.

ACCOMMODATION: Volunteers will be expected to reside on the island during an incursion event. A single-room, 4-bunk, basic hut is located a short walk from the island's jetty in Post Office Cove. This is a working biodiversity hut so accommodation may be shared with DOC staff, contractors or other volunteers.

The hut has solar lighting, an inverter for charging appliances and gas cooking facilities. Water is supplied from a rainwater tank, and there is a solar shower and long drop toilet.

PICKUP / DROP-OFF LOCATION AND TIMES: Meet at the Rakiura National Park Visitor Centre, Stewart Island / Rakiura. Dates and times will be confirmed with the successful applicants.

CONTRIBUTION TOWARDS FOOD AND TRANSPORT:

There is no charge for this activity. However, volunteers will need to make their own travel arrangements to and from Stewart Island / Rakiura and will also need to provide their own food and accommodation in Oban. Accommodation and food will be provided for volunteers while staying on Ulva Island, and return boat transport between Oban and Ulva Island will be arranged.



Photo: Phoebe Whittam



3

Stewart Island/Rakiura – annual hut maintenance

Volunteers are needed to help with the annual maintenance of huts around the coastline of Stewart Island/Rakiura. The focus will be on the huts around Paterson Inlet/Whaka a Te Wera and/or the North West Circuit.

This is an ideal opportunity to visit the picturesque, rugged coastline of the island while doing worthwhile work interspersed with bird watching, photography, hunting and fishing (permits required).

Tasks will include painting, a full interior clean down and basic building repairs.

STEWART ISLAND/RAKIURA

3 volunteers for 8 days

Tuesday 16 September –
Tuesday 23 September
2025

FITNESS/SKILL LEVEL:

Medium to high. Volunteers must be agile and capable of getting in and out of a small boat confidently. They must also be able to carry personal gear and heavy work equipment (up to 15kg) from the beach landings to the huts.

ACCOMMODATION: A variety of basic backcountry huts.

PICKUP/DROP-OFF LOCATION AND TIMES: Meet at the Rakiura National Park Visitor Centre, Stewart Island/Rakiura, at 8.30am on Tuesday 16 September. Volunteers will be returned to the same location at around 3.00pm on Tuesday 23 September.

CONTRIBUTION TOWARDS FOOD AND TRANSPORT: There is no charge for this activity. However, volunteers will need to make their own travel arrangements to and from Stewart Island/Rakiura and also provide their own accommodation prior to and after the trip, if required. During the activity, transport to the various huts will be via boat and dinghy.



4

Papatowai Campsite – facility maintenance

Nestled in native bush and next to an old DOC ranger house, Papatowai Campsite provides easy access to the beach, estuary and Tahakopa Bay Scenic Reserve. The team at Papatowai Campsite require assistance to give the campsite and area surrounding the house a general tidy up. Tasks will include painting, minor building repairs, cleaning camp facilities, weeding and trimming vegetation around the campsite.

THE CATLINS

4 volunteers for 5 days

Monday 22 September –
Friday 26 September
2025

FITNESS/SKILL LEVEL:

Low to medium. Painting, decorating and carpentry skills would be useful.

ACCOMMODATION: Fully furnished, three-bedroom DOC house at Papatowai. A hot shower and laundry facilities

are available, and all kitchen appliances and equipment are provided.

PICKUP/DROP-OFF LOCATION AND TIMES: Meet at the Papatowai Campsite at 9.30am on Monday 22 September. The activity will finish at 4.00pm on Friday 26 September.

CONTRIBUTION TOWARDS FOOD AND TRANSPORT: \$150 per person.



Photo: DOC

5

Hollyford valley – track and hut maintenance

This is a fantastic opportunity to experience part of a popular track in Fiordland and learn about the area's interesting history. The first afternoon will consist of a health and safety briefing for all volunteers, after which the group will help arrange food and equipment for the following day. Volunteers will be flown by helicopter to Lake Alabaster Hut (weather permitting), enjoying spectacular views of the Hollyford area.

Volunteers will work alongside DOC rangers in the Hollyford valley from Lake Alabaster/ Wāwāhi Waka to the Hollyford Road end, undertaking tasks such as hut cleaning, structure maintenance, track maintenance and trimming back vegetation.

FIORDLAND NATIONAL PARK

2 volunteers for 9 days

Monday 22 September –
Tuesday 30 September
2025

FITNESS/SKILL LEVEL:

Very high. Volunteers will be required to tramp up to 8 hours with a pack. Scrub bar experience and a first aid certificate would be useful.

ACCOMMODATION: The first night will be spent at the local holiday park in Te Anau

(this will be organised for the group). The remainder of the trip will be based at Lake Alabaster and Hidden Falls Huts on the Hollyford Track.

PICKUP/DROP-OFF LOCATION AND TIMES: Meet at the DOC workshop, 19 Caswell Road, Te Anau, at 2.30 pm on Monday 22 September. Volunteers will be returned to the same location around 4.30 pm on Tuesday 30 September.

CONTRIBUTION TOWARDS FOOD AND TRANSPORT:
\$300 per person.



6

Southern Islands Quarantine Store – maintenance

Aotearoa New Zealand's subantarctic islands/ Ngā Moutere O Murihiku Ki Tonga remain among the few relatively pristine groups of islands in the world. They contain a diverse, unique and vulnerable range of plants and wildlife surviving in a harsh environment. They have the highest level of protection as national nature reserves and individually have World Heritage Area status.

Each visit brings with it threats, including weeds, rodents, pathogens, fire and disturbance. The team at the Southern Islands Quarantine Store plays an important part in ensuring that all visitors (researchers, scientists, film crews and DOC staff), their personal gear, hut supplies, and any work equipment and building materials go through a stringent quarantine process prior to departing for the subantarctic and outlying islands.

We are looking for volunteers to assist with the quarantine process throughout the season. There will be a variety of tasks to suit everyone, including cleaning gear that has returned from trips – steam cleaning fish bins, washing the quarantine van and trailer, and general cleaning and maintenance around the facility. There may also be an opportunity at times to assist with the quarantine process before trips head south – training will be provided.

INVERCARGILL

Several days throughout the season; volunteers will be contacted when required

October 2025 –
April 2026

FITNESS / SKILL LEVEL:

Volunteers will be on their feet for prolonged periods of time and may be required to bend, lift and carry items around the store.

ACCOMMODATION:

Volunteers will need to be based in the Southland region; accommodation is not provided.

PICKUP / DROP-OFF LOCATION AND TIMES: Meet at the Southern Islands Quarantine Store, 65A Eye Street, Invercargill. Dates and times will be confirmed with the successful applicants as required.

CONTRIBUTION TOWARDS FOOD AND TRANSPORT:

There is no charge for this activity. However, volunteers will need to make their own travel arrangements to and from the quarantine store in Invercargill and provide their own food.



Photo: DOC



Photo: Karen Connor

7

Sandfly Bay – wildlife viewing ranger

Sandfly Bay is one of the Otago Peninsula's most popular destinations, featuring hoiho / yellow-eyed penguins, pakake / New Zealand sea lions and other wildlife. Volunteers will educate visitors about the penguins and how to behave around wildlife.

OTAGO PENINSULA DUNEDIN

Late afternoon until
early evening, several
nights per month

Mid-October 2025 –
mid-April 2026

FITNESS/SKILL LEVEL:

Medium. Beach access
is via a steep sand dune.

ACCOMMODATION:

Not provided.

LOCATION: Volunteers will
need to make their own way
to Sandfly Bay each evening,
which is a 20-minute drive
from Dunedin.

CONTRIBUTION TOWARDS FOOD AND TRANSPORT:

There is no charge for this activity. However, volunteers will need to provide their own transport, or we may be able to arrange transport with other volunteers.

TO REGISTER/FOR FURTHER INFORMATION:

Email volunteerscoastalota@doc.govt.nz or register online at doc.govt.nz/get-involved/volunteer. Volunteers must be able to commit to several nights a month and training will be provided.



Photo: DOC

8

Waikaia Forest – track maintenance and historic water race restoration

Volunteers will carry out track maintenance and restoration work on the historic water race at Piano Flat, the only known operational water race in Southland. The work will involve clearing weeds, cutting back vegetation, earthworks and fluming maintenance. This beautiful location has great opportunities for trout fishing, bush walks and photography.

NORTHERN SOUTHLAND

4 volunteers for 5 days

TRIP A:
Monday 13 October –
Friday 17 October
2025

TRIP B:
Monday 9 March –
Friday 13 March 2026

FITNESS/SKILL LEVEL:

Medium to high. There is some
steep terrain in the area and
this trip may involve working
in all weather conditions.
Basic carpentry skills would be
useful but are not essential.

ACCOMMODATION:

Accommodation is provided
in the cabins at the Waikaia
campground.

PICKUP/DROP-OFF LOCATION AND TIMES:

Meet at the DOC workshop (at the rear of Marshall Industries), 193 Bond Street, Invercargill, at 8.30am on the day the trip starts. Alternatively, volunteers can meet at Piano Flat – please advise the trip leader if you wish to do this. Volunteers will be returned to the DOC workshop at around 4.00pm on the last day.

CONTRIBUTION TOWARDS FOOD AND TRANSPORT:

\$160 per person.



Photo: Shellie Evans

9

Nugget Point Lighthouse Reserve – summer rangers

Nugget Point / Tokatā Point is a popular tourist destination and home to rare endemic plant and animal species, such as the hoiho / yellow-eyed penguin. Volunteers are needed to provide assistance and conservation education to visitors, as well as to maintain facilities and clean toilets as required – due to high visitor numbers, the facilities must be clean and tidy at all times. This a great opportunity for a couple or two friends.

THE CATLINS

2 volunteers for 2 weeks per trip

TRIP A

Monday 10 November –
Monday 24 November
2025

TRIP B:

Monday 24 November –
Monday 8 December 2025

TRIP C:

Monday 8 December –
Monday 22 December
2025

TRIP D:

Monday 22 December
2025 – Monday 5 January
2026

TRIP E:

Monday 5 January –
Monday 19 January 2026

TRIP F:

Monday 19 January –
Monday 2 February 2026

TRIP G:

Monday 2 February –
Monday 16 February 2026

TRIP H:

Monday 16 February –
Monday 2 March 2026

FITNESS/SKILL LEVEL: Low. Rangers need to be visible in the reserve for 4–6 hours per day, particularly around the viewing area in the evenings. The tracks around the reserve are well formed and an easy gradient. Volunteers need to have excellent communication skills and enjoy talking to people from the local area, as well as other parts of Aotearoa New Zealand and overseas.

ACCOMMODATION: Former lighthouse keeper’s residence (managed by DOC) – a fully furnished, four-bedroom brick house at the top of the reserve. A hot shower and laundry facilities are available, and all kitchen appliances and equipment are provided. Each volunteer will have their own bedroom, but the kitchen/living area and bathroom may be shared from time to time with DOC staff working in the area.

PICKUP / DROP-OFF LOCATION AND TIMES: Meet at the DOC Owaka Field Centre, 20 Ryley Street, Owaka, at 9.00am on the first day. Volunteers will finish at 10.00am on the final day.

CONTRIBUTION TOWARDS FOOD AND TRANSPORT:

There is no charge for this activity. However, volunteers will need to provide their own food and transport. Due to the isolated location of Nugget Point / Tokatā Point, volunteers must have their own vehicle.



10

Photo: DOC

Ulva Island – summer rangers

Ulva Island is the jewel in the crown of Rakiura National Park. This predator-free, open island sanctuary is just 8 minutes by boat across Paterson Inlet/ Whaka a Te Wera from Golden Bay and has abundant birdlife, rich forest, golden-sand beaches and a variety of well-formed walking tracks. This is a rare opportunity to stay in this island paradise while acting as a roving ranger during the height of the visitor season. Tasks will include track maintenance, weed surveillance, visitor facility maintenance, cleaning toilets, biosecurity advocacy, monitoring visitor behaviour and checking traps. There will also be ample time for other pursuits, such as bird watching and photography.

STEWART ISLAND/ RAKIURA

1–2 volunteers for
2–3 weeks per trip

November 2025 –
April 2026

FITNESS/SKILL LEVEL:

Medium. Excellent communication skills and an interest in conservation are essential. Some experience with GPS would be an advantage. Applicants will be interviewed and vetted for this role, and a DOC safety

check will be required. Please indicate your availability and any skills or qualifications relevant to this opportunity on your application form.

ACCOMMODATION: Rangers will be expected to reside on Ulva Island. A single-room, 4-bunk, basic hut is located a short walk from the island's jetty in Post Office Cove. This is a working biodiversity hut so accommodation may be shared with DOC staff and contractors. The hut has solar lighting, an inverter for charging appliances and gas cooking facilities. Water is supplied from a rainwater tank and there is a solar shower and long drop toilet. If required, volunteers will need to provide their own accommodation in Oban prior to and after their time on Ulva Island.

PICKUP/DROP-OFF LOCATION AND TIMES: Meet at the Rakiura National Park Visitor Centre, Stewart Island/Rakiura, at 9.00 am. Dates will be confirmed with the successful applicants. In the event of a rodent incursion response on Ulva Island, volunteer trips may be cancelled.

CONTRIBUTION TOWARDS FOOD AND TRANSPORT:

There is no charge for this activity. However, volunteers will need to make their own travel arrangements to and from Stewart Island/Rakiura. Return transport between Oban and Ulva Island is provided. Food will also be provided for up to two volunteers for the duration of their stay.



Photo: Zoe Caals



11

Stewart Island / Rakiura – hut rangers

This is an excellent opportunity to experience the backcountry of Stewart Island / Rakiura. Hut rangers will be based at either Port William Hut or North Arm Hut on the Rakiura Track. This area has significant historical value and there is also a good chance of seeing kiwi in the wild, so make sure to bring your camera!

Tasks will include greeting visitors, checking hut tickets, pest control, track maintenance and cleaning hut facilities. Safety equipment will be supplied but volunteers are expected to bring their own boots, gaiters and rain gear.

STEWART ISLAND / RAKIURA

1–2 volunteers for
2 weeks per trip

November 2025 –
April 2026

FITNESS / SKILL LEVEL:

Medium. Volunteers will be working 4–6 hours per day. They must be good with people and self-motivated. Comprehensive training will be provided and volunteers must have a current first aid certificate. Applicants will

be vetted for this role and a DOC safety check is required. Please indicate your availability and any skills or qualifications relevant to this opportunity on your application form.

ACCOMMODATION: Port William and North Arm Huts have private hut warden quarters. Each hut has solar lighting and gas cooking facilities and can comfortably accommodate two people. This opportunity may suit a couple or two friends. Accommodation and facilities may be shared with DOC staff working in the area.

PICKUP / DROP-OFF LOCATION AND TIMES: Meet at the Rakiura National Park Visitor Centre, Stewart Island / Rakiura, at 10.30am. Dates will be confirmed with the successful applicants.

CONTRIBUTION TOWARDS FOOD AND TRANSPORT:

There is no charge for this activity. However, volunteers will need to make their own travel arrangements to and from Stewart Island / Rakiura. DOC will provide food and will arrange boat transport to either Port William Hut or North Arm Hut.





12

Photo: Lynn Freeman

Stewart Island/Rakiura – dune restoration

Volunteers will be contributing to the Rakiura Dune Restoration Project, which has been active for 25 years and has had major progress in protecting native dune species. Most of the work will take place in Mason Bay, the largest active dune system in southern Aotearoa New Zealand.

This is a rare opportunity to stay in remote coastal locations around the northwest and southern circuits on Stewart Island/Rakiura. Volunteers will live and work in a team of 4-6 that includes experienced DOC staff.

Tasks may include grid searching dunes while carrying a knapsack and/or shovel, handling and spraying herbicide/chemicals for marram, lupin and gorse control, digging or hand pulling gorse, lupin or marram when weather is not suitable for spraying, identifying plants, supporting biodiversity, and interacting with members of the public. Rodent incursion response work on rodent-free islands may also be included if there is an incursion.



Photo: Jasmine Penny

STEWART ISLAND/ RAKIURA

3 volunteers for
3 months (multiple
trips during this time,
10 days per trip)

November 2025 –
March 2026

FITNESS/SKILL LEVEL: High. Volunteers will be expected to walk through steep sand dunes for up to 8 hours a day while carrying spraying equipment and wearing gumboots, overalls and other appropriate personal protective equipment. Excellent communication skills, teamwork, experience working and living together in a small team, and

an interest in conservation are essential. Experience in plant identification or spraying would be useful. Please list on your application any previous injuries and relevant skills (e.g. first aid certificate, previous volunteer experience, chemical use or Growsafe certificate, experience working in small teams or in remote locations, GPS use).

ACCOMMODATION:

A variety of accommodation may be used during field trips, including staying in tents, backcountry huts or the Mason Bay historic homestead. A room in a shared DOC house will be provided for accommodation on days off between trips. This will depend on the availability of housing and could potentially be shared rooms.

PICKUP/DROP-OFF LOCATION AND TIMES: Meet at the Rakiura National Park Visitor Centre, Stewart Island/Rakiura. Dates and times will be confirmed with the successful applicants.

CONTRIBUTION TOWARDS FOOD AND TRANSPORT:

There is no charge for this activity. However, volunteers will need to make their own travel arrangements to and from Stewart Island/Rakiura. Transport to field sites, food during field trips and accommodation for the duration of your time on Stewart Island/Rakiura will be provided.



Photo: Keri Tuna

Southland – backcountry track maintenance

This is a great chance to explore some of Southland's backcountry tracks. The exact location of the trip will be determined closer to the start date, but areas that may be visited include the Blue, Takitimu and Eyre Mountains.

Tasks will include clearing windfalls, clearing vegetation using scrub bars and hedge trimmers, and re-marking the tracks using orange poles and triangles.

SOUTHLAND

6 volunteers for 5 days

Monday 24 November –
Friday 28 November
2025

FITNESS/SKILL LEVEL:

High. Backcountry tramping experience is recommended as the terrain can be uneven, muddy and steep in places. Previous scrub bar experience is preferable. Volunteers must be able to carry personal gear and work equipment for long periods of time.

ACCOMMODATION: Backcountry huts or tents.

PICKUP/DROP-OFF LOCATION AND TIMES: Meet at the DOC workshop (at the rear of Marshall Industries), 193 Bond Street, Invercargill, at 8.30am on Monday 24 November. Volunteers will be returned to the same location around 4.00pm on Friday 28 November.

CONTRIBUTION TOWARDS FOOD AND TRANSPORT:
\$200 per person.



Photo: Pania Dalley

Milford Track – track and hut maintenance

This is a fantastic opportunity to spend a week on a popular track in Fiordland.

You will learn about the area's interesting history and have the opportunity to walk along the Milford Track after the works are completed. Most of this trip will involve scrub barring and clearing the track. Other tasks may include hut cleaning, minor building repairs and generally tidying the surrounding area. If the weather is unsuitable and we are unable to access the Milford Track, work will be undertaken on the Kepler Track at Moturau and Shallow Bay Huts instead.

FIORDLAND NATIONAL PARK

4 volunteers for 5 days

December 2025

FITNESS/SKILL LEVEL:

Very high. Volunteers must be capable of tramping for 8 hours plus and be physically fit and able to scrub bar and clear tracks all day. Experience using a scrub bar and a current first aid certificate are highly preferential.

ACCOMMODATION: Mintaro Hut or Clinton Forks Hut – you may have to tent at these locations.

PICKUP/DROP-OFF LOCATION AND TIMES: Meet at the DOC workshop, 19 Caswell Road, Te Anau. The date and meeting time will be confirmed with the successful applicants.

CONTRIBUTION TOWARDS FOOD AND TRANSPORT:
\$170 per person.



Photo: Claudia Babirat

15

Mason Bay – historic site maintenance

Situated in a remote area of Rakiura National Park on Stewart Island/Rakiura, this activity involves maintaining the many historical sites associated with early farming on the island. There is often the opportunity to explore the Mason Bay area after work hours and potentially spot a kiwi (weather conditions permitting). Tasks include clearing vegetation around the historic woolshed and homestead, repairing and maintaining buildings, applying preservatives, cleaning, and replacing piles.

STEWART ISLAND/ RAKIURA

4 volunteers for 10 days

Wednesday 14 January
– Friday 23 January
2026

FITNESS/SKILL LEVEL:

Medium to high. The work being undertaken is physical, especially when clearing vegetation off the tracks and historic sites. Volunteers need to be comfortable undertaking moderate physical activity for up to 8 hours a day. It is demanding work but very rewarding.

ACCOMMODATION: The Island Hill historic homestead.

PICKUP/DROP-OFF LOCATION AND TIMES: Meet at the Rakiura National Park Visitor Centre, Stewart Island/Rakiura, at 8.30am on Wednesday 14 January. Volunteers will be returned to the same location around 2.30pm on Friday 23 January.

CONTRIBUTION TOWARDS FOOD AND TRANSPORT:

There is no charge for this activity. However, volunteers will need to make their own travel arrangements to and from Oban on Stewart Island/Rakiura. Transport from Oban to Mason Bay will be provided by either a fixed-wing plane or helicopter.



16

Photo: Thomas Wright

Southland – preservation of historic relics

This is a wonderful opportunity to discover several of Southland's historic relics and help to preserve them for future generations. Volunteers will be based in Invercargill for the week and will travel to multiple locations around Southland. Experiences will include exploring the gold mining and saw milling relics in Longwood Forest, the hauler in Waipohatu Recreation Area, the bucket dredge at Waipapa Point, the coastal warning system (radar) on top of The Bluff/Motupōhue, and the Gunpit Coastal Defence Camp in Bluff.

Tasks will include clearing vegetation, removing dirt, moss and lichen from the relics, and applying metal preservative to help preserve the relics for years to come and prevent further deterioration.

SOUTHLAND

4 volunteers for 5 days

Monday 26 January –
Friday 30 January
2026

FITNESS/SKILL LEVEL:

Low to medium. Most sites are easily accessible, but volunteers will be required to walk for 2–3 hours in the bush on relatively flat terrain.

ACCOMMODATION: Volunteers will need to arrange their own accommodation in Invercargill.

PICKUP / DROP-OFF LOCATION AND TIMES: Meet at the DOC workshop (at the rear of Marshall Industries), 193 Bond Street, Invercargill, at 8.30 am on Monday 26 January. Volunteers will be returned to the same location at the end of each day around 4.00 pm.

CONTRIBUTION TOWARDS FOOD AND TRANSPORT:

There is no charge for this activity. However, volunteers will need to provide their own food for the week. DOC will provide transport to the different work locations each day.



Photo: Thomas Wright



17

Skippers Point School – maintenance

This is a fantastic opportunity to travel through Skippers Canyon and explore Mount Aurum Recreation Reserve, learning about the rich history of the area, from early sheep farming to the first gold miners, while also contributing to the upkeep of Aotearoa New Zealand's historic heritage. The remnants of Skippers township contain nationally significant historic buildings from the early gold rush era.

Volunteers will carry out maintenance on the schoolhouse, which will include painting and a general tidy up of the surrounding area.

QUEENSTOWN/
WHAKATIPU

4 volunteers for 5 days

Monday 9 February –
Friday 13 February
2026

FITNESS/SKILL LEVEL:

Low. The Skippers area has full vehicle access so volunteers will only be required to walk short distances.

ACCOMMODATION:

Four-bunk hut with a hot shower and barbecue facilities.

PICKUP/DROP-OFF LOCATION AND TIMES: Meet at the DOC workshop, 1 Arthurs Point Road, Queenstown, at 10.00am on Monday 9 February. Volunteers will be returned to the same location at around 12.00pm on Friday 13 February.

CONTRIBUTION TOWARDS FOOD AND TRANSPORT:

There is no charge for this activity.



18

Fiordland – lakeside hut maintenance

This is an amazing opportunity to explore Fiordland's beautiful lakes. Volunteers will carry out maintenance on huts around two or three of these lakes, with possible visits to Lake Manapouri, Lake Te Anau, Lake Hauroko or Monowai Lake.

Tasks will include cleaning, small building repairs, painting, removing rubbish and clearing vegetation.

FIORDLAND
NATIONAL PARK

3 volunteers for 5 days

Monday 2 March –
Friday 6 March 2026

FITNESS/SKILL LEVEL: High.

Volunteers must be agile and capable of getting in and out of a small boat confidently. They must also be able to carry personal gear and lots of heavy work equipment from the beach landings to the huts.

ACCOMMODATION: Basic backcountry huts. Volunteers are welcome to bring their own tents if they prefer more privacy.

PICKUP/DROP-OFF LOCATION AND TIMES: Meet at the DOC workshop, 19 Caswell Road, Te Anau, at 9.00am on Monday 2 March. Volunteers will be returned to the same location around 4.30pm on Friday 6 March.

CONTRIBUTION TOWARDS FOOD AND TRANSPORT:

\$125 per person.



Port Pegasus / Pikihatiti – historic tin-mining site maintenance

This activity is situated in a remote area of the Rakiura National Park on Stewart Island / Rakiura and involves maintaining many historical sites that were associated with tin mining in the area during the late 1800s. Tasks will include clearing tracks, moving slash from the DOC chainsaw operator, re-digging drains, pulling seedlings, shrubs and small trees in a significant area of ground-sluced tailings, restoring the hydraulic sluicing guns, and monitoring historic sites.

STEWART ISLAND / RAKIURA

2 volunteers for 10 days

Early March 2026
(exact dates to be confirmed in December 2025)

FITNESS / SKILL LEVEL:

Very high. This activity involves a minimum of 3–4 hours tramping each day (2 hours solid uphill with a daypack), up to 15km in total. The track is steep and can be muddy and slippery. The work being undertaken is physical and strenuous, especially when clearing vegetation. Volunteers

must be comfortable doing physical activity for up to 8–10 hours per day in an exposed area of the southern Tin Range in all weather conditions (rain, cold wind, sunshine). Volunteers must also have a current first aid certificate.

ACCOMMODATION: On board the *Southern Winds* vessel that has full facilities. Volunteers must be comfortable living in close quarters with 11 other people on a boat for 10 days. Freshwater use is restricted.

PICKUP / DROP-OFF LOCATION AND TIMES: Volunteers will meet outside the Stewart Island Visitor Terminal in Bluff at 8.30 am, where they will be collected by the *Southern Winds*. Volunteers will be returned to Bluff after 2.30 pm on the final day.

CONTRIBUTION TOWARDS FOOD AND TRANSPORT: \$350 per person.





Photo: Ashleigh Morrow

20

Burwood Takahē Centre

Volunteering at the Burwood Takahē Centre will provide you with the opportunity to contribute to the Takahē Recovery Programme while also learning about this threatened species, DOC's captive breeding programme and the challenges these birds face. A major highlight is viewing takahē up close in their natural environment and learning about the conservation management techniques the Recovery Team is employing. Volunteers will work with DOC rangers at the Burwood Takahē Centre, carrying out a variety of tasks to help keep the takahē safe and healthy. Tasks will include weekly feeding, checking and rebaiting the trapping network in and around the pens, as well as other general maintenance.

SOUTHLAND

4 volunteers for 5 days

Sunday 29 March –
Thursday 2 April 2026

FITNESS/SKILL LEVEL: High.

This activity involves physical outdoor work for 6–8 hours per day on uneven terrain.

Good hand strength is also required when working with traps and prior experience is recommended.

ACCOMMODATION: Shared accommodation in a fully furnished cottage at the Burwood Takahē Centre. Hot showers, laundry facilities, kitchen appliances and equipment are provided.

PICK UP/DROP-OFF LOCATION AND TIMES: Meet at the Burwood Takahē Centre after 4.00pm on Sunday 29 March. The address will be given to the successful applicants.

CONTRIBUTION TOWARDS FOOD AND TRANSPORT:

There is no charge for this activity. However, volunteers will need to provide their own transport to Burwood and food for the week.

IMPORTANT INFORMATION: The nearest town with groceries and supplies is a 30-minute drive away in Te Anau. There are no public transport options so you will need your own vehicle.



Photo: DOC

Other volunteer opportunities



Photo: Dawn Patterson

Bluff Hill Motupōhue Environment Trust



BLUFF

Bluff is a town and seaport that is situated 30 km south of Invercargill. It is overlooked by The Bluff/Motupōhue, a culturally, recreationally and ecologically important area that is one of the last populated places in Aotearoa New Zealand where the forest meets the sea.

The Bluff Hill Motupōhue Environment Trust, formed in 2008, is dedicated to the restoration and protection of the natural environment on and around Motupōhue. It is involved in pest control, revegetation, species translocation, education and raising public awareness, and aims to provide an environment where native birds, plants and invertebrates not only survive but thrive on and around Motupōhue.

Volunteer opportunities include working control lines (clearing overgrown vegetation, rebaiting stations and cleaning out traps) on a weekly, bi-weekly or monthly basis. This work takes 2–4 hours depending on the control line and you can work alone or as part of a team with alternating work periods. An experienced line worker will train you on the first day on your line, and basic tools and equipment will be provided.

This is a great chance to get fresh air and exercise while enjoying bird song and experiencing the satisfaction of catching pests and helping to preserve this important area.

The Trust relies on volunteers to run its projects and is always keen to welcome new people.

FITNESS/SKILL LEVEL: Medium to high.

TO REGISTER/FOR FURTHER INFORMATION:

Visit the Trust's website and Facebook page at motupohue.nz and facebook.com/BHMET or email info@motupohue.nz.



Coal Island / Te Puka Hereka



FIORDLAND NATIONAL PARK

There will be numerous
trips throughout
the year

In 2005, the Trust developed and implemented a plan to rid Coal Island of red deer, stoats and mice. With the initial eradication now complete, it is essential that work continues to keep the island pest free so that it can flourish and to allow the introduction of endangered native birds, invertebrates, lizards and plants. To help achieve this, volunteers are needed to help conduct several trap checks throughout the year.

TO REGISTER/ FOR FURTHER INFORMATION:

Visit the Trust's website and Facebook page at coalisland.co.nz and facebook.com/tepukahereka.coalisland.



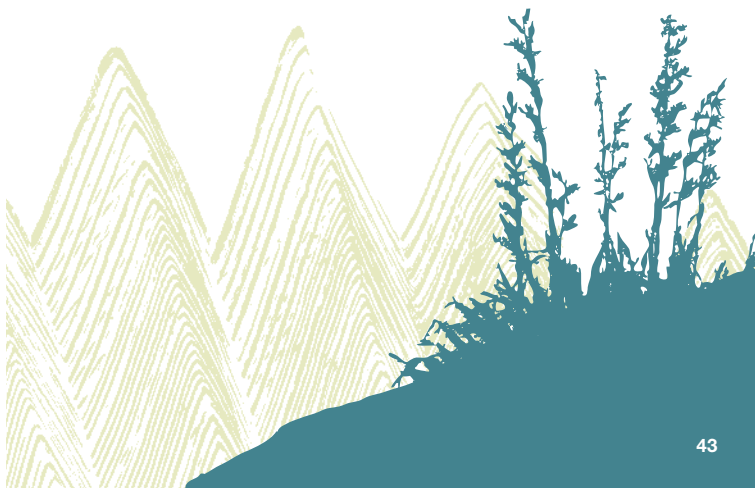
Coastal Otago

DUNEDIN

Conservation groups around Dunedin and the coastal Otago area are keen to hear from new volunteers. Joining a community group is a fantastic way to meet other people, engage in meaningful conservation work and access beautiful areas of Coastal Otago that are often easily missed.

FOR FURTHER INFORMATION:

Email volunteerscoastalota@doc.govt.nz or visit the Conservation Volunteers Coastal Otago Facebook page at facebook.com/Conservationvolunteerscoastalotago.





Hollyford Conservation Trust – Te Roopu Manaaki o Whakatipu Waitai



FIORDLAND
NATIONAL PARK

Martins Bay lies at the end of the Hollyford valley, just north of Milford Sound/Piopiotahi. This 'biodiversity hotspot' has a range of landscapes, habitats, flora and fauna – both marine and terrestrial – that are unparalleled anywhere else in Aotearoa New Zealand.

The Hollyford Conservation Trust, established in 2014, aims to protect, enhance and restore the native flora and fauna of the lower Hollyford valley through intensive pest control over a 13,000-hectare area. The Trust undertakes regular stoat trap checks and bait station work to suppress rats, stoats and possums to low levels. This has resulted in an incredible return of birdlife to the valley in the 10 years the Trust has been operating.

The Trust welcomes volunteers to assist with trapping, monitoring and track maintenance. Volunteers must be familiar with backcountry travel and be confident working off the track. Preference is given to volunteers with predator control experience.

This is an amazing opportunity to visit a remote and beautiful part of Fiordland and contribute to a successful predator control project.

FITNESS/SKILL LEVEL: Volunteers must have a high level of fitness and basic bush navigation skills.

ACCOMMODATION: Provided at Martins Bay.

FOR FURTHER INFORMATION:

Visit hollyfordconservationtrust.org.nz or email hollyfordconservationtrust@gmail.com.



Lower Clutha planting days

DUNEDIN

The lower Clutha planting days offer a wonderful opportunity for hands-on involvement in important local conservation projects. As well as visiting beautiful locations, you will be improving the health of freshwater ecosystems and helping to secure a future for the remarkable species that depend on them.

A day out in the field with our rangers will mostly involve planting native species such as harakeke/ flax, pūrei/ carex sedge and tī kōuka/ cabbage tree, as well as a range of other species. The day may also involve laying out plants, assembling plant guards and a spot of weeding.

FITNESS/SKILL LEVEL: Low to medium. There will be a variety of tasks to suit everyone and you can work at your own pace. No previous experience is required as a demonstration will be given on site. A typical day consists of 3–5 hours of field work and 1 hour each way for travel.

TRANSPORT: Can be provided to and from Dunedin or you are welcome to bring your own vehicle.

TO REGISTER/FOR FURTHER INFORMATION:

Email volunteerscoastalota@doc.govt.nz or register online at doc.govt.nz/get-involved/volunteer.



Photo: DOC

Mamaku Point Conservation Trust



Mamaku Point
CONSERVATION RESERVE

STEWART
ISLAND/RAKIURA

The Mamaku Point Conservation Trust, established in 2017, is guardian of the Mamaku Point Conservation Reserve, an ecological restoration project that encompasses the entire peninsula beyond the Lee Bay and Horseshoe Bay beaches on

Stewart Island/Rakiura. This 158-hectare reserve includes ancient native podocarp forest and areas that were previously grazed as farmland. It is protected by a 2.1 km long predator-proof fence that protects more than 125 species of native birds, plants and invertebrates from invasive predators.

The Trust welcomes local or visiting volunteers to help with a range of projects, such as track clearance, weed control, fence maintenance, replanting and restoration of the old school camp.

FITNESS/SKILL LEVEL: Medium. Volunteers should have a moderate level of fitness and basic bush navigation skills.

FOOD: Volunteers will need to provide their own food (which may be prepared in the reserve's kitchen facility).

ACCOMMODATION AND TRANSPORT: Volunteers who are visiting the island will be provided with accommodation within the reserve, as well as transport to and from the ferry/flight terminal.

FOR FURTHER INFORMATION: Visit mamakupoint.nz or contact Antony – phone 021 949 960 or email antony@mamakupoint.nz.



Photo: DOC

Omaui Landcare Charitable Trust

ŌMĀUI SCENIC
RESERVE

On Aotearoa New Zealand's south coast, approximately 25 minutes southwest of Invercargill, lies the beautiful Ōmāui Scenic Reserve.

The Omaui Landcare Charitable Trust is a small and dedicated pest-control group made up of local residents and people from Invercargill and beyond. The Trust is currently restoring the ecosystem at Omaui to provide a place where native species are not only surviving but thriving!

The Trust is always keen to welcome new volunteers, so please come and lend a hand with renewing baits and gas packs in our network of Goodnature A24 traps during August and February. This is a wonderful opportunity to make a difference while getting fresh air and exercise and enjoying the stunning views.

FOR FURTHER INFORMATION:

Visit omauiandcarecharitabletrust.co.nz or contact John Collins – phone 022 635 1224 or email omauiandcaregroup@gmail.com.



Photo: Chris Baillie

Orokonui Living Legends

NORTH OTAGO

Regular working days
take place throughout
the year

The Orokonui Scenic Reserve is a 28-hectare tidal estuary at the base of the Orokonui valley and the southern reach of Blueskin Bay. It is important for whitebait and wading birds and is a peaceful recreation area for the residents of Waitati.

Orokonui Living Legends aims to transform the low-lying rank pasture in this area into a thriving natural wetland, much like what it might have been more than 150 years ago. By establishing and growing native plantings, the restored habitat at Orokonui Scenic Reserve will link the Orokonui Ecosanctuary (307 hectares of 100-year-old regenerating forest) with Blueskin Bay to create a single 'mountains to sea' ecosystem of indigenous vegetation that provides foraging habitat for birds.

Workdays take place fortnightly on Sundays from September to May, starting at 10.00 am and finishing at 12.00 pm. There are no workdays from June to August.

TRANSPORT: Transport is available from the Otago University Book Shop, 378 Great King Street, North Dunedin, at 9.40 am – please book a seat with the organiser. Alternatively, volunteers can meet at Waitati at 10.00 am. Volunteers will be emailed prior to each workday advising which site in Waitati they will be working at.

TO REGISTER/FOR FURTHER INFORMATION:

Contact the DOC Ōtepoti/Dunedin Office – phone 03 477 0677 or email chrisbaillie77@gmail.com.



Photo: DOC

Otatara Landcare Group



INVERCARGILL

Since 2000, the Otatara Landcare Group, along with many volunteers, has put a lot of time into restoring a 14-hectare area of pasture grass that is located between two remnants of nationally significant native tōtara forest. To date, the Bushy Point Restoration Project has seen 30,000 native plants being planted in this magnificent area.

The Landcare Group also organises predator trapping over 90 hectares around Bushy Point as part of the Otatara Pestbusters programme.

There are often opportunities to volunteer at this site and any help you can give is welcomed.

FOR FURTHER INFORMATION: Visit otataralandcare.org.nz or contact Chris Rance or Barry Smith – phone 03 213 1161 or 03 213 1150.



Photo: Lynley King

Pomona Island Charitable Trust



Pomona Island

LAKE MANAPOURI

Since 2005, the Pomona Island Charitable Trust has been helping to maintain Pomona Island in Lake Manapouri as a sanctuary where native bird species can thrive. Home to the Threatened – Nationally Vulnerable Haast

tokoeka, as well as the kakarui / South Island robin, kea and kārearea / New Zealand falcon, Pomona Island is an accessible location for visitors to see, hear and learn about the flora and fauna that are native to Fiordland.

Regular day trips are run throughout the year so that volunteers can undertake trap checks to reduce the number of introduced predators on the island.

TO REGISTER/FOR FURTHER INFORMATION:

Visit the Trust's website or Facebook page at pomona-island.org.nz and facebook.com/pomonarona, or email pomona.rona@gmail.com to be added to their volunteer email list and receive information on future working bees on Pomona Island.



Photo: DOC

Southland Community Nursery and Education Centre



OTATARA

The Southland Community Nursery at Otatara near Invercargill gives volunteers the chance to grow their own locally sourced native plants for conservation activities.

Training days for plant propagation and a wide range of nature-related workshops are available throughout the year.

Volunteers can also lend a hand in the nursery or assist with school visits to the Education Centre on site.

FOR FURTHER INFORMATION:

Visit southlandcommunitynursery.org.nz or contact Chris Rance – phone 03 213 1161 or email rances@southlandcommunitynursery.org.nz.



Photo: Willy Gamble

Stewart Island/Rakiura Community and Environment Trust (SIRCET)



STEWART ISLAND/
RAKIURA

SIRCET is a non-profit, charitable trust that was founded in 2002 to promote projects that benefit the Stewart Island/Rakiura community and its environment. The Trust focuses predominantly on ecological restoration through controlling pests and weeds, and planting.

SIRCET's trapping efforts have significantly reduced pest numbers, allowing native birds to flourish, while the nursery produces native plants for planting sites and to enhance local gardens.

The Trust relies heavily on volunteers and has a variety of jobs to suit all fitness levels, including nursery work, trap construction, trap checks and monitoring, and track maintenance. Volunteers are welcome to help out for a few days or a few months.

FOR FURTHER INFORMATION: Visit the SIRCET website at sircet.org.nz or contact SIRCET – phone 020 4167 4160 or email community@sircet.org.nz.



Photo: Willy Gamble

SIRCET Community Native Plant Nursery

STEWART ISLAND/
RAKIURA

The SIRCET Community Native Plant Nursery is a great resource for the local community, propagating eco-sourced native species to replace weeds and helping with restoration activities around the township.

The nursery produces native plants for planting sites and to enhance local gardens, providing habitat for native birds and invertebrates.

The nursery is entirely volunteer run, with community members and visiting school groups giving their time to propagate and raise seedlings.

FOR FURTHER INFORMATION:

If you are visiting Stewart Island/Rakiura and would like to help, contact SIRCET – phone 020 4167 4160 or email community@sircet.org.nz.



Photo: Whakatipu Reforestation Trust

Whakatipu Reforestation Trust



WHAKATIPU BASIN/
QUEENSTOWN

The Whakatipu Reforestation Trust has been working with the community to grow and plant native plants, including threatened species, throughout the Whakatipu basin in and around Queenstown since 2013.

This is creating wildlife corridors that attract native birds and insects back to the basin, significantly enhancing the region's biodiversity.

The Trust welcomes volunteers to help at the nursery every Wednesday and on community planting days throughout autumn and spring. All public planting days are advertised on the Trust's Facebook page: facebook.com/wrtqt.org.nz.

The Trust also works with local schools to inspire students to embrace kaitiaki/stewardship of the natural environment.

FOR FURTHER INFORMATION: Visit wrtqt.org.nz or contact the volunteer coordinator – email volunteer@wrtqt.org.nz.



Photo: © Brendan Bombaci (kairologic.com)

Whakatipu Wildlife Trust (WWT)



WHAKATIPU BASIN/
QUEENSTOWN

The WWT, formed in 2017, is committed to creating and maintaining a predator-free environment throughout the greater Lake Wakatipu area to enable birds and other native wildlife to flourish.

It is comprised of over 70 like-minded community groups who undertake pest control within the area.

Fortunately, there are pockets of native forest in the Whakatipu basin that are easily accessible, many of which have populations of native birds that need protection from introduced pests, particularly rats, stoats and possums. These birds include tūī, korimako/bellbird, kārearea/New Zealand falcon, kererū/New Zealand pigeon, pīwakawaka/fantail, titipounamu/rifleman, kākārīki/yellow-crowned parakeet and kea, to name just a few.

The WWT is working towards the Government's Predator Free 2050 goals and welcomes volunteers to assist its member groups with their trapping endeavours. Trapping sites range from Glenorchy at the head of the lake through to Fortune or Bobs Cove and Queenstown, as well as sites around the lake from Kelvin Heights through to Wye Creek. There are also opportunities to volunteer in Arrowtown and the Gibbston valley.

FOR FURTHER INFORMATION:

Visit whakatipuwildlifetrust.org.nz or email hello@whakatipuwildlifetrust.org.nz.

Terms and conditions

Applying for activities

One application form should be completed for each person (photocopy extra copies if required) and sent to Department of Conservation, PO Box 743, Invercargill 9840. Do not send any money with your application. Alternatively you can apply online at doc.govt.nz/get-involved/volunteer.

When considering your activity options, take into account the fitness level required, the working conditions and your availability.

Acceptance

You will receive confirmation of your booking once you have been accepted for your chosen conservation activity. Every effort will be made to notify you within a reasonable time frame, but please note that if you are applying months in advance, you may not receive notification of acceptance until closer to the activity's scheduled date.

Due to the popularity of volunteer activities, we are unable to guarantee that all applicants will be accepted for a particular activity. Many activities are oversubscribed, in which case ballots may be conducted.

We will advise on any changes or additional details concerning the activity. If you are applying as a couple or with friends, please specify this on your application form.

Cancellation

If you are no longer able to attend an activity, please notify the trip leader or the Volunteer Coordinator in Invercargill as soon as possible – phone 0800 275 362 or email invercargill@doc.govt.nz. Please note that last-minute volunteer cancellations may result in the whole activity being cancelled.

Volunteers who cancel with at least 4 weeks' notice are eligible for a full refund. Cancellations within 4 weeks of the activity commencing are not eligible for a refund.

Extreme weather conditions (e.g. flooding, snow) may make it impractical to carry out the activity as defined here. In such cases, we will make every effort to provide an alternative activity. If this is not possible, we reserve the right to cancel the activity, in which case a full refund will be made.

Application form

One application form required per person.

Note: 18 years is recommended as the minimum age without parental supervision. There is no upper age limit.

First name:

Surname:

Address:

.....

.....

Postcode: Email address:

Telephone (day): DOB:

Male ☐ Female ☐

Gender diverse ☐ Choose not to specify ☐

List the activities you are applying for below
(in order of preference):

Activity no: Activity name and date:

.....

.....

.....

.....

Do you wish to participate in more than one activity
(if spaces are available)? Yes/No

Do you have any skills/experience that might be useful
(e.g. track construction, painting)?

.....

Do you wish to have your contact details sent to other
volunteers on the same activity for transportation
arrangements?

Yes/No

Do you have a current first aid certificate?

Yes/No



Please state any medical conditions (e.g. diabetes, heart condition, asthma, allergies, food intolerance):

.....

.....

Are you dependent on any medication?

Yes/No

Please provide details:

.....

Dietary needs (e.g. vegetarian, vegan):

.....

Contact details of next-of-kin in case of an emergency:

Name:

Address:

.....

.....

Relationship: Phone:

☐ Please add me to the mailing list to receive the next conservation volunteer activities booklet

Send to:

Conservation Volunteer Coordinator

Department of Conservation

PO Box 743

INVERCARGILL 9840



Care for Aotearoa



Protect nature

Keep your distance and don't feed wildlife. Follow any rules restricting dogs, fires, drones or vehicles.



Be prepared

Stay safe in the outdoors by following the Land Safety Code.

- ▶ Choose the right trip for you.
- ▶ Understand the weather.
- ▶ Pack warm clothes and extra food.
- ▶ Share your plans and take ways to get help.
- ▶ Take care of yourself and each other.



Keep NZ clean

Take all rubbish with you and use toilets where provided.



Show respect

Respect others, respect culture.



Department of Conservation
Te Papa Atawhai



Te Kāwanatanga o Aotearoa
New Zealand Government

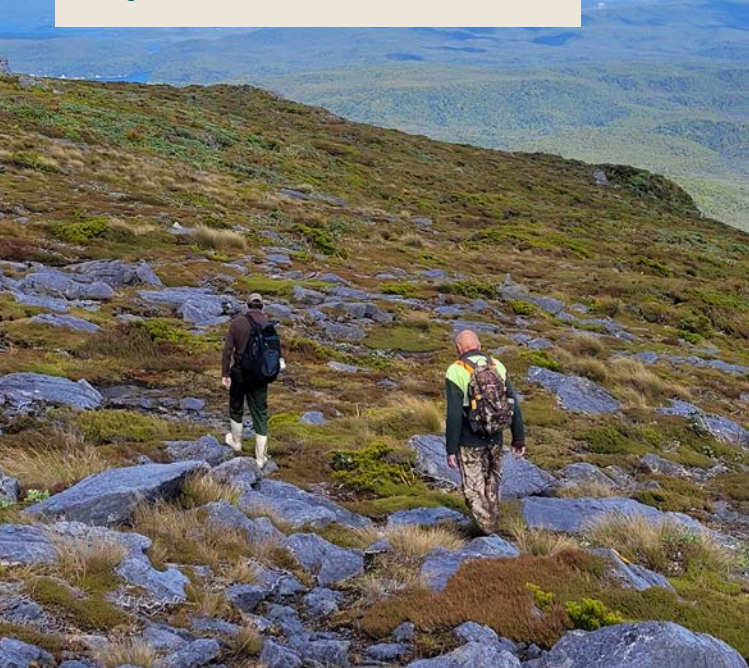


For more information:

PHONE: 0800 ASK DOC (0800 275 362)

EMAIL: invercargill@doc.govt.nz

doc.govt.nz



Cover: Checking on traps on Stewart Island/Rakiura. *Photo: Guy McDonald*

Back: Tin Range, Stewart Island/Rakiura. *Photo: Tamsen Walker*

This information was accurate at the time of printing.
For the latest information on DOC's policies and facilities,
visit doc.govt.nz.

Published by:

Department of Conservation
Murihiku/Invercargill Office
PO Box 743
Invercargill 9840

July 2025

Editing and design:

Te Rōpū Ratonga Auaha, Creative Services



**Te Kāwanatanga
o Aotearoa**
New Zealand Government