

## Invertebrates



COOKS TURBAN  
*Cookia sulcata*



SMALL OPAL TOP SHELL  
*Cantharidus opalus*



LINED WHELK  
*Buccinulum species*



URCHIN or KINA  
*Evechinus chloroticus*



RED ROCK LOBSTER or KOURA  
*Jasus edwardsii*



PAUA / ABALONE  
*Haliotis iris*



GOLF BALL SPONGE  
*Tethya species*



BRITTLE STAR  
*Ophiopsammus maculate*



ELEVEN ARMED STARFISH  
*Coscinasterias calamaria*

## Vertebrates



SPOTTY OR PĀKIRIKIRI  
*Notolabrus celidotus*



PARORE  
*Girella tricuspidate*



SNAPPER or TAMURE  
*Pagrus auratus*



TWO SPOT DEMOISELLE  
*Chromis dispilus*



LEATHER JACKET or KŌKIRIKIRI  
*Parika scaber*



RED MOKI or NANUA  
*Cheilodactylus spectabilis*



BANDED WRASSE  
Tangahanga  
*Notolabrus fucicola*



KINGFISH  
*Seriola lalandi*

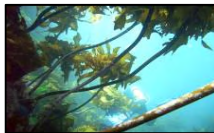


BUTTERFISH – MARARI/KOEAEA  
*Odax pullus*

## SeaWeeds



FLAP JACK  
*Carpophyllum maschalocarpum*



COMMON KELP  
*Ecklonia radiata*