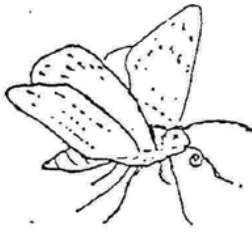


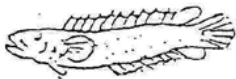
Is it an animal?



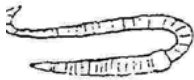
Butterfly



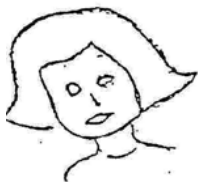
Fire



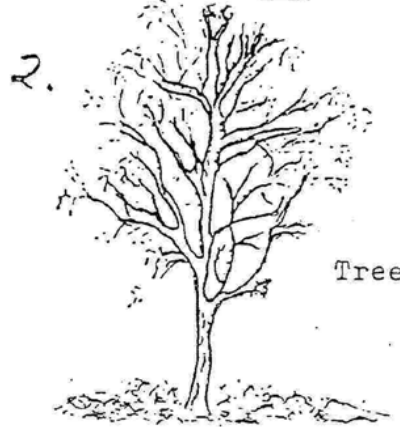
Fish



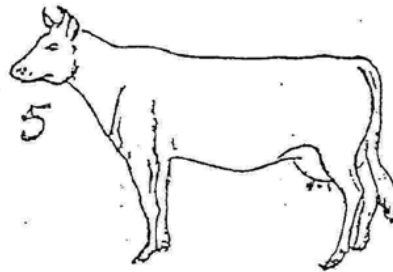
Earthworm



Person



Tree



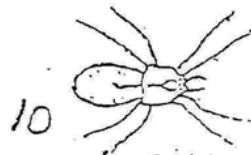
Cow



Whale



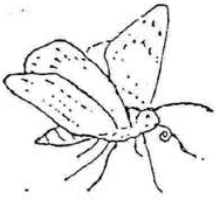
Bird

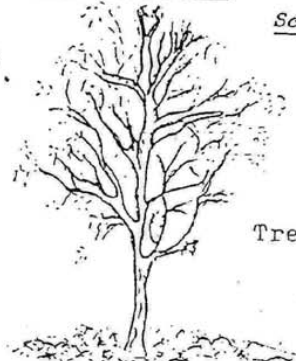



Spider

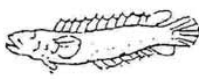
Model answers:

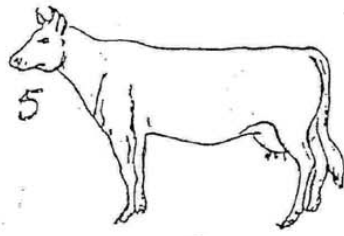
Is it an animal?

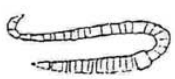
1.  Yes
Butterfly


2.  No
Tree
Scientists Views


3.  No
It may move
reproduce (sparks?) etc. but it does not have the senses -
we see and feel fire but it does not see or hear us!
Fire

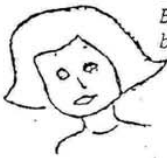
4.  Yes
Fish

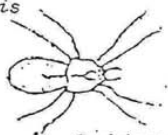
5.  Yes
Cow

6.  Yes
moves
eats
droppings - worm casts
reacts to light (test it)
Earthworm

7.  Yes
Whale

8.  Yes
Bird

9.  Yes
Be aware of religious objections to
being called an animal. There is
a quote from the bible about
"man" being created above the
animals, or words to that
effect.
Person

10.  Yes
Spider