



**THE OUTLOOK  
FOR SOMEDAY**

Young People + Film + Sustainability



Department of  
Conservation  
*Te Papa Atawhai*

Show us you get



the  
**BIG  
PICTURE**



## Introducing the Department of Conservation Big Picture Award

The Department of Conservation (DOC) is pleased to be partnering again with **The Outlook for Someday** sustainability film challenge for young people.

DOC is sponsoring the Big Picture Award. It's a special award for a Winning Film focusing on one or more of DOC's Big Ideas and Values. Read on for some background information on the Big Picture.

## You are here

Have you ever written your address as...  
Earth, the Solar System, the Milky Way, the  
Universe?

There are between 30 and 50 trillion stars out there in somewhere between 80 to 140 billion galaxies but Earth is the only place we call home. It's all we have (that is, until we catch up with Star Trek).

For life to survive and thrive here we need to get that we are all part of one natural world and what we do either helps or harms this planet. Everything is connected—from deepest ocean to outer space—and what we do does make a difference.



# What is The Big Picture?

The Big Picture is part of DOC's *Education Strategy 2010-2030—Investing in Education for a Sustainable and Prosperous Future*. It encapsulates essential Big Ideas and Values about how we are part of the natural world around us and how we can make a difference.

What does that mean? Simply that we are all part of one great ecosystem. Without our fresh air, water, seas, fertile soils, forests, animals and plants we humans couldn't survive. Every thing, even the tiniest

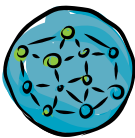
of bugs, has a role to play, including us. We have a responsibility to understand this connection. How you express this is up to you.

*The Big Picture Award will be given for a film that focuses on one or more of the Big Ideas and Values.*

Here are the Big Ideas and Values to get your minds whirring.

## the BIG IDEAS

People are part of the natural diversity of our planet. What we do DOES make a difference.



### Everything is connected

*Ko au ko te taiao, ko te taiao ko au  
I am the environment, the environment is me*

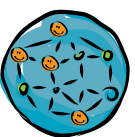
- The planet is made up of a number of interconnected systems.
- Everything in an ecosystem has a role to play.
- Changing anything in an ecosystem impacts on everything else. It is often difficult to predict what the consequences of any change might be.



### The planet's diversity is critical to our survival

*Toitū te marae a Tāne, Toitū te marae a  
Tangaroa, Toitū te Tangata  
If we care for the resources of the land and  
the sea, we, the people, will survive*

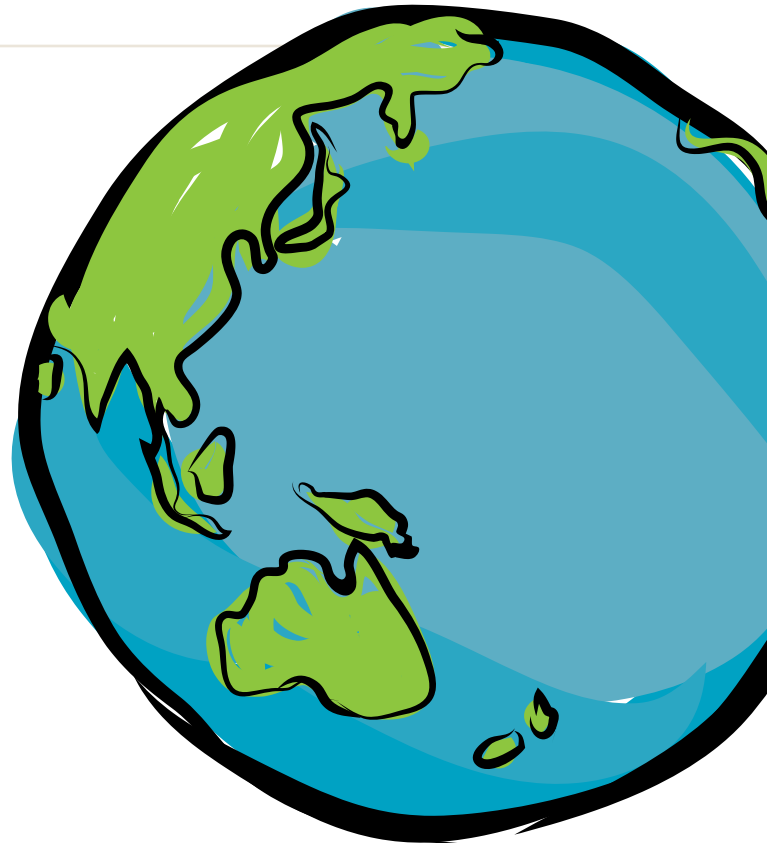
The health, well-being, and survival of humans depends on the health, well-being and survival of our planet's ecosystems.



### People are part of the natural world

*He nohonga ngātahitanga ahau me te taiāo  
We live as one with our natural world*

- People's actions can impact both negatively and positively on the environment.
- Individuals, especially young people, can make a positive difference to ecosystems.



### Aotearoa/New Zealand is a special place because of its many unique species and ecosystems

*Kāore he wāhi i kō atu i a Aotearoa  
me ōna koiora, me ona waahi ahurei  
There is no place in the world like*

*Aotearoa with its special biodiversity and unique ecosystems*

- Many of the species and ecosystems unique to New Zealand are threatened.
- If New Zealand's unique species die out, they disappear from the planet.
- Because of New Zealand's long isolation from other land masses, many native species are vulnerable to the activities of people and introduced mammals.
- New Zealand's natural world is part of who we are as New Zealanders.

# VALUES

These are drawn from the Māori perspective of the natural world and are described here by wonderful storyteller and DOC staff member Joe Harawira. Use these as a starting point to explore your own values about the natural world.

**Aroha** means 'love' but it actually refers to a lot more than that. It is about compassion for the environment and understanding the environment. We are all connected to the natural world.

I am the tree—the tree is me. The tree provides for us. We must show aroha for everything within our ngahere (forest). We must have compassion for it, so that we build and grow into the future.

**Manaaki** means 'to look after and to care for'. It is our responsibility to be good kaitiaki/guardians for our ngahere and for the natural world. If we don't look after and care for the resources, then we will not have them in the future. It is part of our responsibility to manaaki everything within the natural world.

**Wairua** means 'spirit'. Everything within the Māori world has a spirit. Wairua is mainly associated with living things, with people, and humans. Wairua is about feeling and hearing the essence that is around us in the ngahere.

**Tapu** means 'sacred' and can refer to sacred sites of special significance to the people who once roamed this ngahere, this forest of Tāne Mahuta, guardian of the forest. Everything in the ngahere and of the natural world has tapu. Likewise, you have tapu.

**Mauri** means 'life essence' or 'life force' and was strong before the arrival of people, who brought pests. The mauri of the natural world has been weakened by us not taking care of it as we should, but we have the power to restore the mauri for the benefit of all living things.

**Mana** means respect, power, authority, and relates to dignity. From the Māori world view, everything has mana within the natural world.

## Where to start

To get you going, have a look at these film clips we've made for The Big Picture.

- Watch Ruud 'Bugman' Kleinpaste and discover how we depend upon nature in our day to day lives.
- Listen as renowned storyteller Joe Harawira tells you about aroha and manaaki.

[www.doc.govt.nz/bigpicture](http://www.doc.govt.nz/bigpicture)

## Win the DOC Big Picture Award



Have a go making a film about the Big Picture and win the DOC special award and awesome prizes. The prizes for The Outlook for Someday film challenge will be posted on the project website at [www.theoutlookforsomeday.net/prizes](http://www.theoutlookforsomeday.net/prizes).

### *The Outlook for Someday website*

All you need to enter The Outlook for Someday film challenge, including the entry form, is here: [www.theoutlookforsomeday.net](http://www.theoutlookforsomeday.net)

**Best of luck.**

## More information on conservation

### *DOC links*

Have a look at the DOC website [www.doc.govt.nz](http://www.doc.govt.nz). There's a fair bit of information about what's happening in conservation in NZ, as well as links to the huge number of community groups that are working with DOC around the country.

Also check out some ideas, events and education pages at:

[www.doc.govt.nz/gettinginvolved](http://www.doc.govt.nz/gettinginvolved)

[www.doc.govt.nz/conservationweek](http://www.doc.govt.nz/conservationweek)

[www.doc.govt.nz/wordsonawing](http://www.doc.govt.nz/wordsonawing)

[www.doc.govt.nz/teachers](http://www.doc.govt.nz/teachers)

### *Other links*

[www.landcareresearch.co.nz/education](http://www.landcareresearch.co.nz/education)

[www.tolweb.org/tree](http://www.tolweb.org/tree)

[www.daversitycode.com](http://www.daversitycode.com)

[www.tiritirimatangi.org.nz/learn](http://www.tiritirimatangi.org.nz/learn)

**There are just so many sites to check out... go wild!**



Department of  
Conservation  
*Te Papa Atawhai*



**THE OUTLOOK  
FOR SOMEDAY**  
Young People + Film + Sustainability

[www.doc.govt.nz/bigpicture](http://www.doc.govt.nz/bigpicture)

[www.doc.govt.nz/outlook](http://www.doc.govt.nz/outlook)

[www.theoutlookforsomeday.net](http://www.theoutlookforsomeday.net)