

**WEST COAST *TAI POUTINI*  
CONSERVATION BOARD**  
Annual Report 2016/2017





# West Coast *Tai Poutini* Conservation Board Annual Report 2016-2017

Presented to the New Zealand Conservation Authority  
pursuant to Section 6(O) of the Conservation Act 1987

ISSN 1172-918x (Print)

ISSN 1179-2647 (Online)

Front Cover Photo: R Coakley in Paparoa National Park – Photographer Ben Norris

Published by

West Coast *Tai Poutini* Conservation Board

c/- Department of Conservation

PO Box 701

Hokitika 7842



## 1. Message from the Chair, Mike Legge

It has been another busy year for the Conservation Board with the completion of the Paparoa National Park Plan Review, initial development of the Paparoa Track and the Pike 29 Memorial Track. Completing the review within the time frame of one year and the publication of the Plan is something the Board is justifiably proud to have completed. This could not have been possible without the Partnership with Ngati Waewae and TRONT, and the excellent working relationship with the Department of Conservation staff especially the planners Robyn Roberts and Sarah Wilson. The Board has now moved onto the Westland Tai Poutini National Park Plan Review, a more complex park plan, which again is in full Partnership with Makaawhio and TRONT.

Tourism has been an important consideration for the Board during the year. The communications relating to tourism have been enhanced with the South Island Board Chairs liaising on tourism strategies and options. Projected tourism numbers are likely to have a significant impact on South Island facilities and this is an area for the Boards to have an active role.

Identification and protection of cultural and historic sites continues to be on the Agenda with the Board's members and liaison with the Department of Conservation staff is greatly appreciated.

Contact with the New Zealand Conservation Authority (NZCA) was maintained during the year. The NZCA annual Chairs meeting is extremely valuable both for the discussions with other Board Chairs and got the information exchange with the NZCA.

Stewardship land issues have continued to engage the Board and it was disappointing to find that the proposed strategy did not allow for early engagement for consultation with iwi in decision making for prioritizing the five areas for 'progression'. The West Coast Region has significantly more Stewardship land than other Regions, which the Board found it difficult to prioritize. Despite this problem five areas were identified.

Pest management has been another important area for the Board and we have continued to be updated by the Department of Conservation, ZIP, TBFree as well as representatives from the anti-1080 groups. Dr Elaine Murphy provided the Board with an update on pest management technologies and strategies via a conference link. This was a valuable session to add to the Boards continuing education policy on pest management.

During the year the Board became involved with the West Coast Regional Development Strategy and Action Plan and looks forward to involvement in the next stage.

Finally, I would like to acknowledge the work Board members have undertaken during the year. Much of the work is undertaken outside of Board meetings, which means making themselves available in their own time. The Board could not function or be effective without the Department of Conservation. Staff have always been available to discuss projects and provide information for the Board. While the Board has enjoyed this close working relationship I would like to especially acknowledge Joy Comrie, Statutory Manager and Mark Davies, Director, Operations for all the work they have done to provide for a functional Board. Finally, the Board cannot function without the Board Support Officer, Mary-Anne Thorpe was promoted within the Department and we have been very fortunate to have Philippa Freeman as Mary-Anne's replacement. Thank you to Mary-Anne for all your work and thank you to Philippa for joining the Board and keeping us all in order!

A handwritten signature in black ink, appearing to read 'Mike Legge', with a stylized flourish at the end.

Mike Legge - Chairperson

## Contents

1. Message from the Chair, Mike Legge.....	i
2. Introduction .....	1
3. Annual Work Plan .....	2
4. West Coast Tai Poutini Region.....	2
5. Board Membership .....	4
5.1 Members Profiles.....	4
6. Meetings.....	6
6.1 Board Meetings.....	6
6.2 Attendance.....	6
6.3 Field Trips .....	7
6.4 Community and DOC Involvement in Board Meetings.....	11
7. Board Committees and Representation .....	11
8. Board Functions Under Section 6m of the Conservation Act 1987 .....	12
9. Powers of the Board under Section 6n of the Conservation Act 1987 .....	12
10. Responsibilities under other Sections of the Conservation Act 1987.....	13
11. Board Functions under the National Parks Act 1980 .....	13
12. Liaison .....	14
12.1 Other Conservation Boards .....	14
12.2 Community .....	14
12.3 District and Regional Councils.....	14
12.4 Iwi .....	14
Appendix I - West Coast Tai Poutini Annual Work Plan.....	15

## 2. Introduction

This is the West Coast *Tai Poutini* Annual Report as required under Section 6 of the Conservation Act 1987.

The West Coast *Tai Poutini* Conservation Board had 11 members for the 2016-2017 year appointed by the Minister of Conservation under the terms of the Conservation Act 1987. There were two new appointments to the Board – Francois Tumahai and Barry Hughes and four re-appointments – Paulette Birchfield, Rob Roney, John Taylor and Terry Scott. Dr Mike Legge was elected as Chairperson and Rob Roney as Deputy Chairperson.

Conservation Boards are independent advisory bodies, established by statute. The West Coast *Tai Poutini* Conservation Board represents the community and offer interaction between communities and the Department of Conservation, within the area of jurisdiction of the Board.

The Board has several statutory roles under various Acts including:

- The recommendation of a West Coast Conservation Management Strategy (CMS) to the New Zealand Conservation Authority (NZCA) for approval
- Advising the Department of Conservation and the NZCA on how conservation management strategies and plans will be put into practice
- Reporting on the implementation of the CMS
- The approval of Conservation Management Plans
- The recommendation of National Park Management Plans to the NZCA for approval
- Advising the Department of Conservation and NZCA on conservation matters, and proposed changes to status of land of national and international significance
- Liaising with Fish and Game Council on conservation matters
- Carrying out other powers delegated by the Minister of Conservation, the Conservation Act or any other Act

Section 6(O) of the Conservation Act requires conservation boards to provide the NZCA with an annual report as soon as practical after 30 June each year. In recognition of this requirement the West Coast *Tai Poutini* Conservation Board submits this annual report.



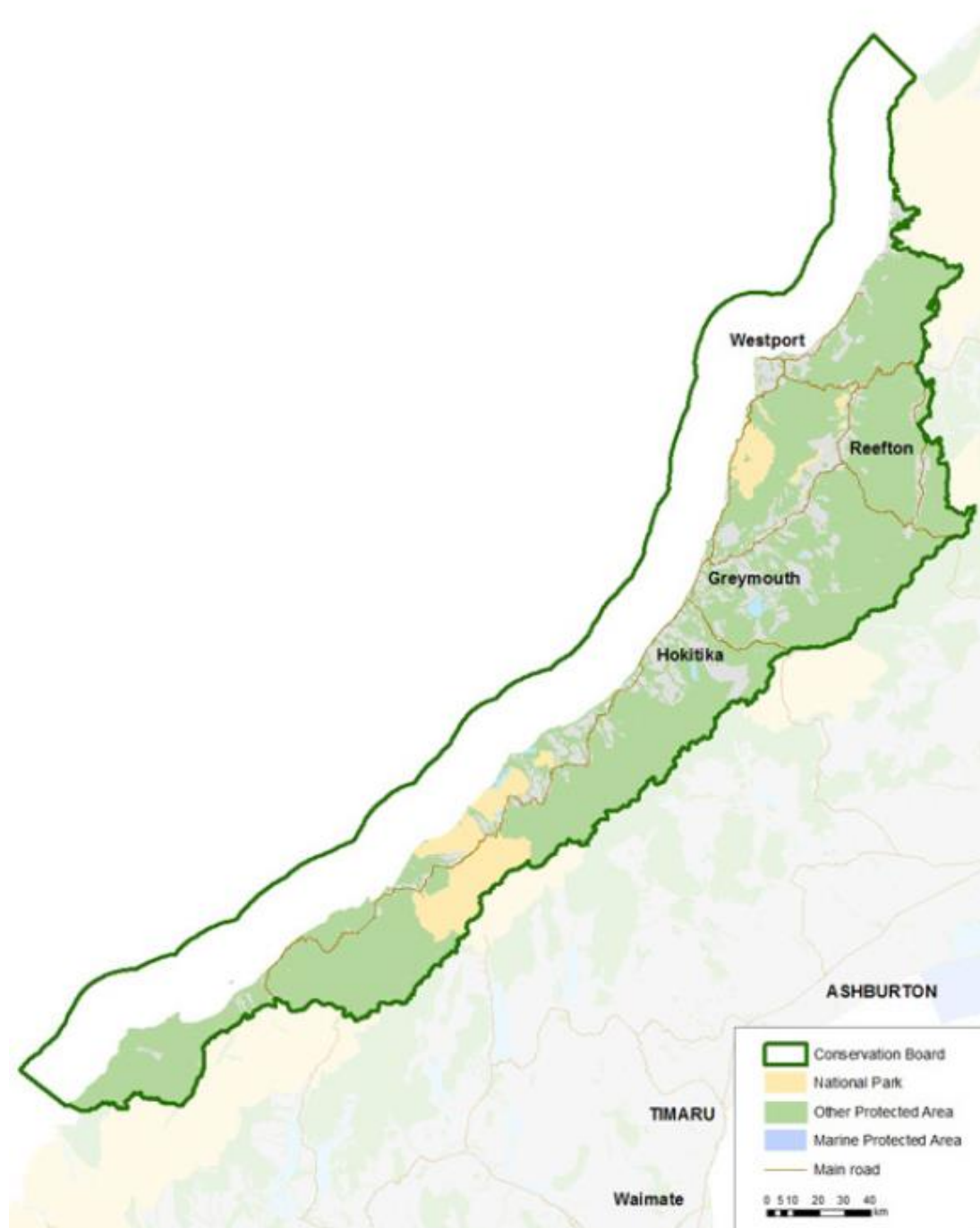


### 3. Annual Work Plan

Please refer to Appendix 1 for the full Board Annual Work Programme.

### 4. West Coast *Tai Poutini* Region

The West Coast *Tai Poutini* Conservation Board's area of jurisdiction covers the West Coast from north of Karamea south to Big Bay. The area also extends out to the 12-nautical mile limit with respect to coastal and marine issues, and out to the 200-nautical mile limit with respect to marine mammal issues.



Westland *Tai Poutini* National Park and Pararua National Park lie within the Boards' jurisdiction.

Approximately 25% of all public conservation land in New Zealand lie within the West Coast Region. The large number of issues which are of interest to the Board include:

- Ecosystem management and management of plant and animal species such as mistletoe, Wetland petrel/*taiko*, white heron/*kotuku*, blue duck/*whio*, rowi, Haast *tokoeke*, great spotted kiwi/*roa*, mohua and Powelliphanta species
- Management of recreational facilities
- Management of historic sites
- Concession activities, including those relating to recreation and tourism activities, grazing, industrial use, baches, filming, gravel extraction
- Mining and access arrangements
- Marine protection

The total area of the West Coast Region comprises of 1,913,000 ha. Of this total, approximately 84% (1,610,000 ha) is contained within the boundary of the West Coast *Tai Poutini* Conservation Board's area of jurisdiction.

#### Features of the Area:

- Paparua National Park – 39023 ha
- Westland *Tai Poutini* National Park – 131330 ha
- Victoria Conservation Park – 204675 ha
- 114 Scenic Reserves – 79405 ha
- 19 Historic Reserves – 12644 ha
- 92 Recreation Reserves – 402 ha
- 45 Ecological Areas – 216506 ha
- 21 Amenity Areas – 17098 ha
- 390 Stewardship Areas – 845383 ha
- 3 Wilderness Areas – 111602 ha
- Adjoins Kahurangi, Arthur's Pass, Aoraki/Mt Cook, Mt Aspiring and Fiordland National Parks
- It is an integral part of Te Wahipounamu – South West NZ World Heritage Area

## 5. Board Membership

There were 11 Board members for the reporting year appointed by the Minister of Conservation.

Four members whose terms of office expired on 30 June 2016 were reappointed for a further 3-year term and there were two new appointments.

Mike Legge was elected Chairperson and Rob Roney was elected Deputy Chairperson.

### 5.1 Members Profiles

**Dr Mike Legge (Chairperson)** was an Associate Professor (Biochemistry and Pathology) at the University of Otago until 2011, and now holds an honorary role. He has extensive experience in environmental management and policy development, and sound understanding of public processes and public participation in decision-making. He is a life sciences consultant and QEII covenant holder. His outdoor recreation interests are tramping, track work, hut warden, revegetation, photography, bird census, and marine conservation.

**Veronica Baldwin** is Director – Innovation Hub at the Tai Poutini Polytechnic. She has expertise in resource and environmental management, policy development analysis, and planning, and a good understanding of compliance and public, governmental and parliamentary processes. She is a former conservation board member and former private secretary to the Minister for the Environment. Her outdoor recreation interests are walking, visiting and experiencing national parks and their features. She is of Ngāi Tahu iwi.

**Paulette Birchfield** is Engineering Officer at the West Coast Regional Council. She has qualifications and practical knowledge and experience in environmental engineering, resource management skills, and knowledge of environmental principles, problems and management. She is a keen advocate for use of the conservation estate for recreational use. Her outdoor recreation interests are trail and mountain running, multisport, and mountain-biking.

**Rauhine Coakley** is nominated by Te Rūnanga o Ngati Waewae. She is currently employed as a Whānau Ora Navigator for Poutini Waiora, and has worked in the health sector for the past 7 years. She has also worked in the tourism and hospitality sections for several years. She has a passion for conservation and has a desire to learn more about conservation, and the *Tai Poutini* and conservation issues that affect the people and environment.

**Dan Moloney** has recently retired as a school principal. He is familiar with planning and analysis of data, and has good communication skills and cultural awareness. He is a keen trapper, and West Coast historian and photographer. He is involved in community organisations, and understands the proposed marine reserves and conservation issues on the West Coast. His outdoor recreation interests are tramping, West Coast history, photography, and reading.

**Rob Roney (Deputy Chair)** was the Head of the Science Department at Greymouth High School, and an ex Chairperson of Fish and Game West Coast and currently a member of the Fish and Game New Zealand Council. He has expertise in communication, dealing with groups, planning and analysis, and health and safety. He has sound governance skills, and sound understanding of public processes, strategic planning, legislation and meeting procedure. His outdoor recreation interests are tramping, climbing, back country hunting, fly fishing, and rafting.

**Terry Scott** is a nominee of Te Rūnanga o Ngāi Tahu. He is retired and has thirty-four years Fire Service experience, involving Fire Command and Control at a senior level (QSJM). He is a former Dunedin City Councillor, and been a member of many committees in the local area. He is knowledgeable of local government and Department of Conservation processes and procedures. His outdoor recreation interests are fishing and tramping. He is of Ngāi Tahu iwi.

**John Taylor** owns Western Ventures, and is a strong advocate for conservation of industrial heritage. He is a past member of the community development board, and has governance, advocacy and relationship management skills. He is also a tutor in conservation-related legislation and health and safety. His outdoor recreation interests are tramping, mountaineering and exploring the New Zealand mining heritage sites (both on the surface and underground).

**Coraleen White** is a farmer, former Buller District Councillor and former Westport Issues Assistant to West Coast Tasman MP Chris Auchinvole. She has experience in governance roles, and in working with DOC staff to resolve constituent concerns. She helped prepare the Council's inaugural district plan, and participated in public hearings. She holds a QSM. Her outdoor recreation interests are walking and boating; especially in Westland *Tai Poutini* and Kahurangi National Parks.

**Barry Hughes** operates a kayak hire and guiding business with his partner on Okarito Lagoon in South Westland, and has spent the last nine years working in tourism guiding and management. He has tramped extensively throughout the Southern Alps, and enjoys, but is not that good at, climbing, hunting and mountain biking. He is a strong supporter of public recreation access and a keen interest in biodiversity, having volunteered on DOC projects focused on Tokoeka, Mohua, and less glamorous weed eradication.

**Francois Tumahai** is of Ngati Waewae and Ngati Whatua descent. He is the Chairman of Te Rūnanga o Ngati Waewae, Managing Director of Poutini Environmental and the General Manager of Waewae Pounamu. Francois brings over 20 years of management experience, 15 years governance experience and 8 years director experience to the Board.

## 6. Meetings

### 6.1. Board Meetings

The West Coast *Tai Poutini* Conservation Board held five meetings during the reporting period. Venues for the Board meetings are varied each year to ensure a wide coverage and enable members of the public in the district to attend meetings and access the Board.

Date	Area
14/15 July 2016	Hokitika
15/16 September 2016	Hokitika
16/17/18 November 2016	Franz Josef
16/17 February 2017	Westport
11/12 May 2017	Hokitika

### 6.2. Attendance

The table below shows the number of Board meetings attended by members out of the total number of meetings held during the year.

Member	Home	Attended
Mike Legge (Chair)	Charleston	5/5
Rauhine Coakley	Arahura	4/5
Terry Scott	Oxford	5/5
Dan Moloney	Westport	4/5
Veronica Baldwin	Greymouth	3/5
Rob Roney (Deputy)	Greymouth	4/5
John Taylor	Reefton	4/5
Paulette Birchfield	Greymouth	3/5
Coraleen White	Westport	5/5
Barry Hughes	Okarito	4/5
Francois Tumahai	Kaniere	5/5

### 6.3. Field Trips

#### South Westland – November 2016

On Wednesday 16 November, the Board headed down to see Blacks Locie which had just been installed at Pakihi, then it was on to Okarito to meet with a local community group. In Okarito we talked with some members of the community at the Donovans Store, checked out the new board walk at the start of the Okarito Trig walk and then went down to the wharf.

After the Board meeting on Thursday 17 November, the Board went up to look at the Franz Glacier to look at the area and have discussions around some of the issues coming up with the Westland National Park Review.



L to R: W Costello, T Scott, P Freeman, J Comrie, M Legge, R Roberts, B Hughes, C White,  
R Roney – standing by Black Locie in Pakihi



Walking over the new board walk in Okarito



L to R: M Legge, R Roberts, J Easterbrook, C White, I Wightwick, J Breese, B Hughes, R Roney, T Scott, W Costello, A Cameron – walking up to Franz Josef Glacier

Denniston – February 2017

On Friday 17 February, the Board climbed on board a Unimog driven by Outwest Tours operator Mickey Ryan. The tour started with a drive up to Mount Rochfort to view the Te Kuha site.



The Unimog vehicle which drove us up the bumpy road to Mt Rochfort



The Mt Rochfort tower





C Rendall (DOC) giving a talk about the Plateau

Next stop the Board visited the Escarpment mine which is in care and maintenance at the moment. Campbell Robertson the Environmental Manager, showed us around the site and explained the rehabilitation that was in progress there. Then on the way down a stop for lunch at the Friends of the Hill Museum.



The Board and Department staff getting shown around the Escarpment Mine

## 6.4. Community and DOC Involvement in Board Meetings

The Board welcomes presentations from members of the public and Department staff at the meetings. During 2016-2017 we had presentations from:

- Mike Meehan – New CEO for West Coast Regional Council
- Jeff Dalley on Soundscapes and the effects of mechanised activity
- Shane Cross – Wild animal control
- Ingrid Gruner and Cielle Stephens – mistletoe and other monitoring
- Brian Anderson and Heather Purdie – Glacier change and upcoming issues
- Barry Walker – Solid Energy, Stockton Mine Environment and rehabilitation
- Eric de Boer – Punakaiki infrastructure redevelopment plan

The Board had a large Public meeting in Franz Josef in November 2016 to talk through the Westland Park Plan Review Process and get feedback from the community. They also meet with some members of the Okarito Community to discuss some of the issues affecting the Okarito Community.

At the Board meeting in Westport in February 2017, the Board had three members of the public speak at the public forum. Again, at the May 2017 meeting in Hokitika the Board had a presentation from the Kawatiri Coastal Trail and another member of the public addressed the Board with his concerns. The Board encourages public to attend meetings and speak to the Board during the public forums.

## 7. Board Committees and Representation

### Subcommittees

Subcommittee	Members
Paparoa National Park Management Plan	Mike Legge Dan Moloney Paulette Birchfield Coraleen White Rob Roney Rauhine Coakley (Iwi rep)
Westland National Park Review	Mike Legge Rob Roney Barry Hughes Veronica Baldwin Terry Scott Tim Rochford – Makaawhio (co-opted to subcommittee) Hinerangi Barr Makaawhio (co-opted to subcommittee)

## 8. Board Functions Under Section 6m of the Conservation Act 1987

The functions of the Board are:

- (a) To recommend the approval by the Conservation Authority of conservation management strategies, and the review and amendment of such strategies, under the relevant enactments
- (b) To approve conservation management plans, and the review and amendment of such plans, under the relevant enactments
- (c) To advise the Conservation Authority and the Director-General on the implementation of conservation management strategies and conservation management plans for the area within the jurisdiction of the Board
- (d) To advise the Conservation Authority or the Director-General
  - (i) On any proposed change of status or classification of any area of national or international importance; and
  - (ii) On any other conservation matter relating to any area with the jurisdiction of the Board
- (f) To liaise with any Fish and Game Council on matter within the jurisdiction of the Board
- (g) To exercise such powers and functions as may be delegated to it by the Minister under this Act or any other Act

## 9. Powers of the Board under Section 6n of the Conservation Act 1987

- (1) Every Board shall have all such powers as are reasonably necessary or expedient to enable it to carry out its functions.
- (2) Without limiting the generality of subsection (1), each Board may –
  - (a) Advocate its interests at any public forum or in any statutory planning process; and
  - (b) Appoint committees of members and other suitable persons, and delegate to them functions and powers.
- (3) The power conferred by subsection (2)(a) shall include the right to appear before courts and tribunals in New Zealand and be heard on matters affecting or relating to the Board's functions.

## 10. Responsibilities under other Sections of the Conservation Act 1987

At the Board meeting in May 2017, the Board passed the following resolution:

“That Tim Rochford and Hinerangi Barr be co-opted onto the Westland *Tai Poutini* National Park Plan Sub-Committee for the period of the National Park Plan Review”

This is for the purpose of the plan being completed in full partnership with Te Rūnanga o Makaawhio.

## 11. Board Functions under the National Parks Act 1980

There are two national parks within the Board’s region: Paparoa National Park and Westland National Park. The Board has sub committees involved in the management plan review for these. The Board also advocates for cross boundary issues with Kahurangi National Park (which is the responsibility of the Nelson Marlborough Conservation Board), Arthur’s Pass National Park (Canterbury *Aoraki* Conservation Board) and Mt Aspiring National Park (Otago Conservation Board).

## **12. Liaison**

All Board members have responsibility for liaising with other groups when opportunities arise and some members have specific roles in liaison.

Public forums are offered at each Board meeting for members of the community to raise conservation issues with the Board.

### **12.1. Other Conservation Boards**

The West Coast *Tai Poutini* region's immediate neighbours are the Nelson Marlborough, Canterbury *Aoraki* and Otago Conservation Boards. Liaison with neighbouring Boards are maintained principally through the exchange of minutes and agendas.

### **12.2. Community**

The West Coast is a region of small communities. Board members are often well known in their local communities and have regular contact with members of the public. Where possible the Board tries to meet with local community groups while on field inspections.

Board members are invited to join in activities organised by the Department and other conservation groups to celebrate national events. This gives members a chance to interact with other groups and to learn more about the Department's work.

### **12.3. District and Regional Councils**

The Board appreciates the opportunities to meet with representatives of the four local Councils as there are several regional issues in which it is interested.

During the year, the new CEO of the West Coast Regional Council – Mike Meehan meet with the Board.

### **12.4. Iwi**

Two members of the Board are nominated by Ngāi Tahu as required under the Ngāi Tahu Settlement Act 1998. The Board worked closely with Iwi for the purpose of the Paparoa Park Plan Review and will continue Iwi relationships with the Westland Plan Review.

# Appendix I – West Coast *Tai Poutini* Annual Work Plan

Work Board Programme for 1 July 2016 – 30 June 2017

## Work Programme Overview

This West Coast *Tai Poutini* Conservation Board work programme has been developed in response to the Letter of Expectation from the Associate Minister of Conservation dated 31 August 2016. It is structured in three parts, namely:

- Part A: Planned Board activities aimed at meeting the regional Work Programme contained in the letter:
  - Review/development/monitoring of statutory management plans including Conservation Management Strategies (CMS);
  - Advice relating to stewardship land;
  - Other statutory functions for the Board;
  - Advocacy; and
  
- Part B: Planned Board activities aimed at general expectations contained in the letter:
  - Working with the Department;
  - Taking account of the Ministerial priorities for the Department as contained in the Statement of Intent;
  - Working with adjoining Boards and the NZCA;
  - Understanding the Board's contribution to giving effect to the principles of the Treaty of Waitangi;
  - General engagement with the community, including raising the profile of the Board; and
  
- Part C: Risks/issues from the Board's perspective, and opportunities for conservation growth that are not covered above.

## PART A: REGIONAL WORK PROGRAMME

### 1. Review/development of statutory management plans including Conservation Management Strategies (CMS)

#### 1.1. Board Objective:

The Board will review the revised West Coast CMS draft and will recommend the approval of the draft by the NZCA with or without amendments

Planned Board Activities	Progress Updates
(a) Complete Paparoa National Park Review	Completed – Plan was officially launched on 10 March 2017 at the Barry town Hall
(b) Initiate <i>Tai Poutini</i> Westland National Park review	Park Plan review is underway. Subcommittee has been appointed to work on this
(c) Liaise with Aoraki/Mt Cook Conservation Board on the Aoraki/Mt Cook National Park Management Plan	Ongoing – This Park Plan review is being run in parallel with the Westland Review
(d) Liaise with Otago and Southland Conservation Boards on the Mt Aspiring and Fiordland National Park Management Plans	Currently occurring and Ongoing
(e) Liaise with local authorities on issues relating to the CMS	Currently occurring and Ongoing

#### 1.2. Board Objective:

In conjunction with the Department, the Board will determine priorities for implementation of the approved West Coast CMS

Planned Board Activities	Progress Updates
(a) In conjunction with the Department prioritise areas in the CMS, which require review	Ongoing – CMS is due for review in 2020
(b) Ensure alignment of National Park Management Plans with the CMS	Ongoing with the current work on the Westland <i>Tai Poutini</i> National Park Management Plan

## 2. Stewardship Land

### 2.1. Board Objective:

The Board will provide the Minister and Department with advice on priorities for reclassification of stewardship areas that require Increase protection because of their significant conservation values.

Planned Board Activities	Progress Updates
(a) Initiate review of 'low priority' Stewardship land by liaising with the Department and considering the West Coast Growth Study	This has been initiated and work on this is ongoing
(b) Maintain an oversight of the re-classification of 'high priority' Stewardship land consistent with the "Development of the five-year re-classification plan"	Work has started on this and is ongoing

## 3. Other statutory functions<sup>1</sup>

### 3.1. Board Objective:

The Board will nurture ongoing working relationships with Fish and Game Councils regarding issues of mutual interest within the region

Planned Board Activities	Progress Updates
(a) Continue to maintain liaison with Fish and Game	Rob Roney – current Board member is liaison person as he is also a member of Fish and Game
(b) Maintain good communications with the New Zealand Conservation Authority	Currently occurring and ongoing

### 3.2. Board Objective:

The Board will advise on proposed changes of status for national and internationally important areas, when sought but the department

Planned Board Activities	Progress Updates
(a) The Board will advise on proposed changes of status for nationally and internationally important areas, when sought by the department	Currently occurring and ongoing

---

<sup>1</sup> This section should include Board functions relating to statutory functions under section 6M of the Conservation Act



#### 4. Advocacy

##### 4.1. Board Objective:

The Board will pursue all reasonable opportunities to advocate at public forums and in any statutory planning process

Planned Board Activities	Progress Updates
(a) Continue advocacy on marine protection including Conservation Services Programme	Ongoing. The Board made a submission on the draft Conservation Services Programme Annual Plan 2017/2018
(b) Continue advocacy role on Regional, District and Coastal Plans	Currently occurring and ongoing
(c) Continue advocacy on protection of historic places and sites	Currently occurring and ongoing

##### 4.2. Board Objective:

Planned Board Activities	Progress Updates
(a) Continue to maintain good communications and advocacy with Ngāi Tahu and local Iwi	Currently occurring and ongoing
(b) Participate in the Punakaiki development plan	The Board has been keep informed on this and received presentations and will continue to provide advice on this

## PART B: GENERAL EXPECTATIONS

### 5. Working with the Department

**Board Objective:**

Board members will maintain good working relationships and open dialogue with Directors, Managers and Board Support Officers in order to engage strategically in conservation for the region.

Planned Board Activities	Progress Updates
(a) Maintain excellent relationships with the West Coast Region, Department of Conservation	Currently occurring and ongoing
(b) In consultation with the Department support the Regional Development Plan	Currently occurring and ongoing
(c) Support the Board Support Officer	Regular email/phone contact with Board members and Chairperson is maintained to provide support
(d) Encourage partnerships with the Department in developing conservation strategies	Currently occurring and ongoing

### 6. Taking account of Ministerial priorities for the Department<sup>2</sup>

**Board Objective:**

The Board will identify opportunities to support West Coast community conservation as identified.

Planned Board Activities	Progress Updates
(a) Continue to review and submit on the Department's Policy and Management documents	Currently occurring and ongoing
(b) In conjunction with the Department and local business communities investigate the sustainability of tourism on the West Coast and its impact on conservation values	Currently occurring and ongoing
(c) Encourage local conservation community groups to present their projects to the Board	The Board had a representative on the panel for the DoC Community Fund and has invited groups to present to the Board

---

<sup>2</sup> This section could include where Boards are consulted on pest control operations

**Board Objective:**

The Board will identify opportunities for building relationship to support the Healthy Parks/Healthy People programme

Planned Board Activities	Progress Updates
(a) In conjunction with the Department assist in formulating approaches based on “Nature of Wellbeing” report to support “Healthy Parks/Healthy People” concept	These principles are considered in formulating policy and National Park Plans
(b) Maintain updates on developments in pest control and management	Ongoing with engagement with pest management groups and DoC
(c) Maintain contact with local communities via field trips as part of Board meetings	Currently occurring and ongoing

## 7. Working with adjoining Boards and the NZCA

**Board Objective:**

Board member will liaise with neighbouring conservation boards in order to progress cross boundary CMS issues and other matters of interest

Planned Board Activities	Progress Updates
(a) Please refer to section 1.1	
(b) Continue to exchange Agendas and Minutes with South Island Boards and continue to have a policy of engaging in joint meetings with other South Island Boards	Currently occurring and ongoing
(c) Use Chairs meetings to facilitate face-to-face discussions	Currently occurring and ongoing
(d) Maintain open communication with the New Zealand Conservation Authority	Currently occurring and ongoing

8. Understanding the Board’s contribution to giving effect to the principles of the Treaty of Waitangi

**Board Objective:**

The Board will understand and support the Board’s and Department’s obligations under Treaty settlements as well as principles under section 4 of the Conservation Act

Planned Board Activities	Progress Updates
(a) The Board will understand and support the Board’s and Department’s obligations under Treaty settlements as well as under section 4 of the Conservation Act	Board has introduced Te Reo sessions at the start of each meeting and discussion relating to cultural considerations
(b) Continue to liaise with Ngāi Tahu and local Iwi in early consultation planning	Occurring with work on National Park Plans and Stewardship land
(c) Develop an understanding of the meaning and intent of “consultation”	Ongoing discussion with Ngāi Tahu

9. Engaging with the community, including raising the profile of the Board

**Board Objective:**

Board members will liaise regularly with other conservation entities, such as district and regional councils, NGOs and community groups, in order to enhance the profile of the Board and pursue good working relationships on issues of mutual interest and concern

Planned Board Activities	Progress Updates
(a) Board members will liaise regularly with other conservation entities, such as District and Regional Councils, NGOs and community groups, in order to enhance the profile of the Board and pursue good working relationships on issues of mutual interest and concern	Ongoing – the Board maintains contact with all South Island Conservation Boards. The Chair has met with representatives of local authorities on a range of issues. NGOs occasionally attend the public sessions of Board meetings.
(b) Ensure that all Board meetings are ‘open’ with minor exceptions	Currently occurring and ongoing
(c) Maintain media contacts	The Chair provides liaison with the media and agendas and Board reports are sent to media

**Board Objective:**

Board members will take the initiative to meet with community groups and the general public to gauge community reaction to conservation initiatives planned or implemented by DOC

Planned Board Activities	Progress Updates
(a) Board members will take the initiative to meet with community groups and the general public to gauge reaction to conservation initiatives planned or implement by the Department	Community groups and the general public attend Board meetings and make presentations. Board members are involved with public consultation processes
(b) Review Resource Consent application when appropriate	Ongoing
(c) Attend Hearings when appropriate	Ongoing

**PART C: RISKS AND OPPORTUNITIES****10. Risks from the Board's perspective**

- (a) Board members time
- (b) Funding of Board activities especially with National Park and related reviews
- (c) Geography/distance on the West Coast
- (d) High workload outside of Board meetings

**11. Opportunities for conservation growth**

- (a) Working closely with the Department on significant West Coast issues
- (b) Encourage historic places conservation and management
- (c) Whitebait protection
- (d) Enhancing engagement with communities through Community Partnership Funding