

Wellington Te Rūnanga Papa Atawhai o Te Upoko o te Ika Conservation Board

Annual Report 2024 – 2025



Wellington Te Rūnanga Papa Atawhai o Te Upoko o te Ika Conservation Board

Annual Report 2024 – 2025

Presented to the New Zealand Conservation Authority
pursuant to Section 6(O) of the Conservation Act 1987

Published by
Wellington Conservation Board
c/- Department of Conservation
28 North Street
Palmerston North
4410

ISSN 2537-6926 (print)
ISSN 2537-6780 (online)

Photographs

Front Cover: provided by Department of Conservation

Figure 2: provided by Department of Conservation

Figures: 3 to 8 provided by various members of the Wellington Conservation Board

Back Cover: provided by Asher Wilson-Goldman

CONTENTS

Co-Chair's report	4
Introduction.....	6
Conservation Board Region	7
Wellington Conservation Board.....	7
Conservation features of the area.....	7
Board functioning	9
Board functions under section 6M of the Conservation Act 1987	9
Powers of the Board under section 6N of the Conservation Act 1987.....	9
Functions of the Board under section 30 the National Parks Act 1980.....	9
Board membership.....	10
Member profiles.....	10
Board meetings	13
Attendance	13
Field trips and site inspections	14
Training for members	16
Department involvement in Board meetings.....	16
Annual work plan.....	17
Statutory activity	17
Wellington Conservation Management Strategy (CMS).....	17
Management plans	17
Advice and advocacy.....	17
Other Conservation Boards liaison	17
Authority liaison.....	17
Department advice.....	18
Community advocacy and involvement	18
Community visibility.....	18
Iwi liaison and advocacy	18
Appendix 1:	20
Appendix 2 –Annual Work Plan	22



Co-Chair's report



We are proud to present the 2024-2025 Annual Report of the Wellington Conservation Board, as we reflect over a year filled with much change and mahi.

This year we have consolidated following a year of significant change in 2023-24. Our first year of implementation of our new Board strategic plan has gone successfully, and we have learned many lessons that we will take into year two. In a challenging environment for conservation and for the Department of Conservation, our Board has worked alongside others to help weather the many storms that have come our way.

In 2024, our Co-Chairs attended the annual Conservation Board Chairs hui in Wellington, where we were pleased to be able to present a session on our strategic plan and the process we undertook to develop it. This was positively received by the Chairs of other Boards, and we know several have used parts of our process to help them develop their own plans. This is deeply satisfying as we know the role of a Board Chair is time-and resource-poor, so the more we can take opportunities to share lessons with each other, and avoid duplicating effort, the better off we will all be.

Throughout the year we were also pleased to collaborate with several other Boards on joint submissions, including on the Government's proposed shake up of the statutory management and planning system. Thanks, in particular to Murihiku Southland Board Chair Shona Sangster, and Taranaki Whanganui Board Chair Drew Castle, who have both worked hard to drive a lot of cross-Board collaboration over the past 12 months.

Government policy initiatives are generating significant activity for our Board, and the Department. Challenging fiscal settings mean some tough prioritisations and trade-offs are being made in the work of the Department. We want to acknowledge the ongoing mahi of Department staff who are some of the most passionate and dedicated people we have had the pleasure of interacting with. This past year, the release of many conservation related discussion documents as well as the move to a fast-track project process has also increased the Department's workload, including in the support of Boards to understand where they fit into these changes and processes. Their work on behalf of conservation across Aotearoa continues to inspire, and despite the constraints they face, they continue to deliver truly remarkable outcomes on behalf of the people, flora and fauna of this country.

We must also recognise the ongoing incredible volunteer effort across our region. Over the past year, we have been delighted to meet a range of volunteers involved in predator control, planting, weeding and track building, all of whom do it because of their love of nature and their desire to better connect people with it and share their passion. Whether at Paraparaumu Scenic Reserve, Manawatū Estuary, or Matiu Somes Island, volunteers provide countless hours of hard work, freeing Department staff to focus their expertise where it will add the most value.

Our partnerships with iwi are also growing. Our involvement in the Wellington Harbour Islands Kaitiaki Board alongside the Port Nicholson Block Settlement Trust this year saw our delegate to that Board help with the development of a new Kaitiaki Plan for the

Harbour Islands, in particular Matiu Somes, which will help to realise the huge potential of this culturally significant group of motu located in the heart of Te Whanganui-a-Tara. Through our delegate to the Kapiti Island Strategic Advisory Committee, we are working alongside Te Rūnanga o Toa Rangatira to prepare for the drafting of a Conservation Management Plan for Kāpiti Island, part of Ngāti Toa Rangatira's Treaty of Waitangi settlement. This plan will help to secure a strong future for Kāpiti Island and the important conservation work that takes place there, in partnership with mana whenua.

This annual report will be the last one written by our Co-Chair Carla Bates, who finishes her term on the Wellington Conservation Board in June 2025, alongside two-term Board member Nicole McCrossin. Both have contributed immensely to the Board over recent years, and we are all grateful for their generosity, their expertise and their willingness to get stuck in.

Last but by no means least, Rachael Mora (Statutory Manager LNI) and Claire Jacobs (Board Support Officer) continue to be superstars who we as a Board could not operate without. The Department is truly blessed with the calibre of people it has working for it, and Rachael and Claire are prime examples of this.

Co-Chairs

Asher Wilson-Goldman and Carla Bates



Introduction

This is the eleventh Wellington Conservation Board Annual Report. Section 6(O) of the Conservation Act requires conservation boards to provide the New Zealand Conservation Authority (the Authority) with an annual report as soon as practical after 30 June each year. In recognition of this requirement the Wellington Conservation Board submits this annual report.

Conservation boards are appointed by the Minister of Conservation under section 6(P) of the Conservation Act 1987. Board functions are outlined in section 6(M) and the powers, which enable the conservation boards to carry out those functions, are under 6(N) of the Act.

Conservation boards are independent advisory bodies, established by statute. They represent the community and offer interaction between communities and the Department of Conservation (the Department), within their area of jurisdiction.

Conservation boards have several statutory roles under various Acts including:

- The recommendation of the Wellington Conservation Management Strategy (CMS) to the Authority for approval.
- Advising the Department and the Authority on how conservation management strategies and plans will be put into practice.
- Reporting on the implementation of the CMS.
- The approval of conservation management plans (CMP).
- The recommendation of national park management plans to the Authority for approval.
- Advising the Department and Authority on conservation matters, and proposed changes to status of land of national and international significance.
- Liaising with the regional Fish and Game Council on conservation matters; and
- Carrying out other powers delegated by the Minister of Conservation, the Conservation Act, or any other Act.

Conservation boards also have several functions under section 30 of the National Parks Act 1980. These functions include recommending the review or amendment of national park management plans and recommending approval of these plans by the Authority.

Conservation Board Region

Wellington Conservation Board

The Wellington Conservation Board's area of jurisdiction covers the area of 2,974,763.62 hectares. The jurisdiction extends from the bottom of the North Island to the mouth of the Turakina River in the west, up the Turakina River and over the top of the Ruahine Forest Park, down the eastern boundary of the Forest Park and then out across to the east coast near Waimarama. It includes the three Wellington harbour islands, Matiu/Somes, Mokopuna and Makaro/Ward as well as Kāpiti and Mana islands. The area also extends out to the 12-nautical mile limit with respect to coastal and marine issues, and out to the 200-nautical mile limit with respect to protected species.

Approximately 4.75% of New Zealand's public conservation land and area lie within Wellington's jurisdiction.

Public conservation land and areas make up 23.04% of all land in Wellington. This consists of:

- 286,726.70 hectares of Public Conservation Land
- 395,638.22 hectares of Sanctuaries to Protect Marine Mammals
- 3,021.11 hectares of Marine Reserves

The large number of issues which are of interest to the Board include:

Deer and Goat Control in the Lower North Island Forest Parks

Conservation features of the area

The main features of Public Conservation Land and Waters within the Board's boundaries are:

- Tararua Forest Park – 114,894.14 ha
- Ruahine Forest Park – 94,819.85 ha
- Aorangi Forest Park – 19,406.07 ha
- Remutaka Forest Park – 19,775.57 ha
- 98 Scenic Reserves – 10,241.54 ha
- 1 Historic Reserve – 5.95 ha
- 21 Recreation Reserves – 841.58 ha
- 151 Stewardship Area – 21,621.09 ha
- 171 Marginal Strip – 1,066.83 ha
- 2 Specially Protected Areas – 416.52 ha
- 2 Marine Reserves – 3,021.11 ha

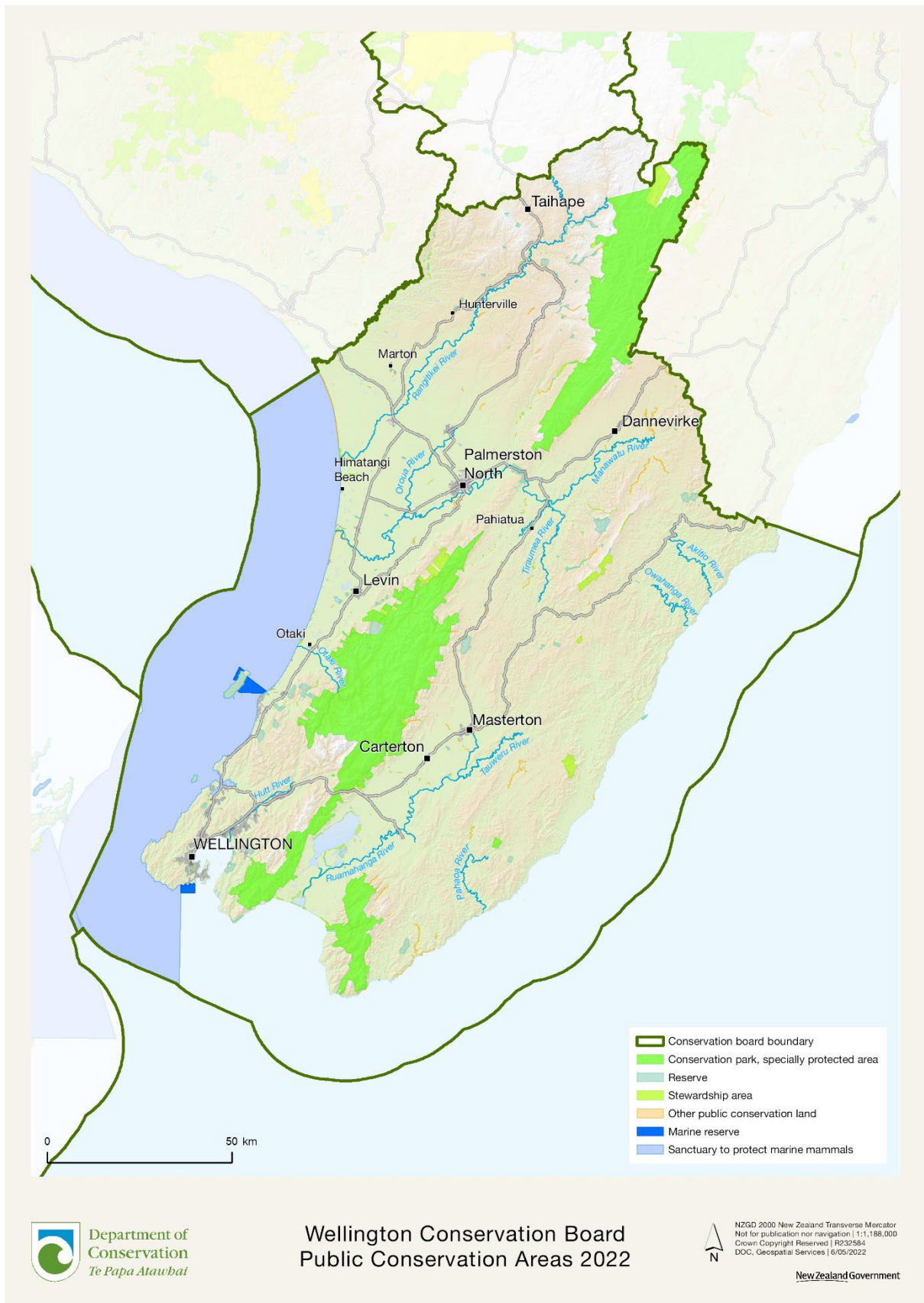


Figure 1 Wellington Conservation Board Jurisdiction

Board functioning

Board functions under section 6M of the Conservation Act 1987

The functions of the Board are:

- 1) To recommend the approval by the Authority of conservation management strategies, and the review and amendment of such strategies, under the relevant enactments.
- 2) To approve conservation management plans, and the review and amendment of such plans, under the relevant enactments.
- 3) To advise the Authority and the Director-General on the implementation of conservation management strategies and conservation management plans for the area within the jurisdiction of the Board.
- 4) To advise the Authority or the Director-General:
 - a) on any proposed change of status or classification of any area of national or international importance; and
 - b) on any other conservation matter relating to any area with the jurisdiction of the Board.
- 5) To liaise with any Fish and Game Council on matter within the jurisdiction of the Board.
- 6) To exercise such powers and functions as may be delegated to it by the Minister under this Act or any other Act.

Powers of the Board under section 6N of the Conservation Act 1987

- 1) Every Board shall have all such powers as are reasonably necessary or expedient to enable it to carry out its functions.
- 2) Without limiting the generality of subsection (1), each conservation board may:
 - a) advocate its interests at any public forum or in any statutory planning process; and
 - b) appoint committees of members and other suitable persons, and delegate to them functions and powers.
- 3) The power conferred by subsection (2)(a) shall include the right to appear before courts and tribunals in New Zealand and be heard on matters affecting or relating to the Board's functions.

Functions of the Board under section 30 the National Parks Act 1980

- 1) To recommend management plans, and the review or amendment of such plans, for parks within the jurisdiction of the Board in accordance with sections 45 to 47.
- 2) To consider and determine priorities for the implementation of management plans for national parks.
- 3) To make recommendations to the Minister for the appointment of honorary rangers under section 40.
- 4) To review and report to the Director-General or the Authority, as appropriate, on the effectiveness of the administration of the general policies for national parks within the jurisdiction of the Board.
- 5) To give advice to the Director-General or the Authority:
 - a) on the interpretation of any management plan for a park; and

- b) on any proposal for the addition of land to any national park or the establishment of a new national park; and
- c) on any other matter relating to any national park, —
within the jurisdiction of the Board.

Board membership

There has been a total of 11 Board members for the reporting year, appointed by the Minister of Conservation. This is represented as 9 servicing board members at any one time, but 2 board members stepped down over the reporting year. Asher Wilson-Goldman and Carla Bates were elected as Co-Chairs.

The following table lists the membership of the Board between 1 July 2024 and 30 June 2025 and their term of office.

Table 1: Board membership

Board member	Area	Term start	Term end	Years served
Manaaki Barrett	Otaki	1 Jul 2021	31 October 2024	3 yrs 4 months
Nicole McCrossin	Wellington	1 Jul 2019	30 Jun 2025	6
Sara Arhaim	Wellington	1 Jul 2020	30 Jun 2026	5
Carla Bates	Wellington	1 Jul 2022	30 Jun 2025	3
Asher Wilson-Goldman	Paraparaumu	1 Jul 2022	30 Jun 2025	3
Pam Crisp	Lower Hutt	1 Jul 2023	30 Jun 2025	2
Anahera Nin	Wellington	1 Jul 2023	30 Jun 2026	1
Sonia Wansbrough	Wairarapa	1 July 2023	31 October 2024	1 yr 4 months
Ashley Webby	Wairarapa	1 November 2024	30 Jun 2027	7 months
Ross Browne	Wellington	1 November 2024	30 Jun 2027	7 months
Sally Lee	Feilding	1 November 2024	30 Jun 2027	7 months

Member profiles

Asher Wilson-Goldman of Paraparaumu (Co-Chair)

Asher has strong community engagement and governance skills at a local Government and national level and in the recreation sector. He offers knowledge of the machinery of government, and provides extensive experience in communications, planning and supporting outdoor recreation.

Carla Bates of Wellington (Co-Chair)

Carla has varied experience in the environmental field, including consultancy work with oil industry and environmental compliance roles on road and rail construction projects. She is skilled in collaboration and consensus building, whilst providing knowledge of sustainability and adaptability to the Board and has a strong understanding of environmental strategy, including action plan coordination.

Manaaki Barrett of Ōtaki (Term ended 31 October 2024)

Manaaki is of Te Ati Awa ki Whakarongotai, Ngāti Raukawa, and Ngāti Toa descent and the Operations Manager for Kāpiti Island Nature Tours, providing 10' years' experience in whanau-owned ecotourism business. He brings extensive knowledge of Kāpiti Island and the surrounding marine reserve to the Board.

Nicole McCrossin of Wellington

Nicole is a principal advisor in the Māori Agribusiness Directorate at the Ministry for Primary Industries. Her studies and career have been centred on the relationship between the Treaty of Waitangi and environmental management, with a background in the negotiation and implementation of natural resources redress in Treaty settlements. Outside of work, she spends as much time as possible outdoors, particularly tramping in the Tararua.

Nicole is also a student of raranga, having recently completed two years study at Te Wānanga o Aotearoa in Porirua, furthering her desire to learn about history, use, and protection of New Zealand's plants. She is also a Crown representative on the Matiu/Somes Kaitiaki Board.

Sara Arhaim of Wellington

Sara is a Strategic Operations Director with a background in law and accounting. She is a risk and compliance expert, able to analyse proposals from a risk perspective, and has extensive work experience in government agencies.

Pamela (Pam) Crisp of Lower Hutt

Pam is co-director of the Nature Through Arts Collective Trust – lives in Lower Hutt. She previously worked for DOC for 25 years in the community engagement space. Pam brings extensive knowledge and experience in nature conservation, community engagement and governance.

Anahera Nin of Porirua

Anahera is Policy and Engagement Advisor for Te Rūnanga o Toa Rangatira – lives in Porirua and whakapapa's to Ngāti Toa Rangatira, Ngāti Raukawa, Tauranga Moana and Ngāti Tūwharetoa. She is Te Whanganui-ā-Tara Representative to Papa Pounamu – NZ Planning Institute. Anahera brings strong knowledge and experience in nature conservation, community engagement, governance, planning and kaitiakitanga and has been appointed for a term of 3 years.

Sonia Wansbrough of Martinborough (Term ended 31 October 2024)

Sonia is a self-employed public policy contractor living in Martinborough. She has lead work on environmental policies and programmes at the Department of Conservation, the Ministry for the Environment, and the Ministry for Primary Industries. She brings extensive knowledge and experience in developing strategy, policy and legislation, and has qualifications in terrestrial ecology, environmental law, and science communication.

Ashley Webby of Masterton (Term started 1 November 2024)

Ashley is a Senior Biodiversity Advisor with the Greater Wellington Regional Council (GWRC), where she leads the fish passage improvement project. Ashley is experienced in fostering strong relationships with mana whenua and communities to ensure their perspectives and knowledge are integrated into her work, particularly in relation to freshwater ecosystems. In previous roles, she led regional ecology and water quality programs.

With a deep commitment to biodiversity and freshwater ecology, as well as strong relationship-building skills, Ashley continues to play a pivotal role in the preservation and restoration of aquatic ecosystems in the Wellington region.

Ross Browne of Lower Hutt (Term started 1 November 2024)

Ross is a Wellington-based company director and consultant. His professional experience includes managing infrastructure projects in ecologically sensitive environments, and training and development in the search and rescue sector.

His recreation interests include tramping, hunting and mountain biking. He has volunteered with various environmental and outdoor education groups in Wellington, Horowhenua and Central Hawke's Bay. Ross also volunteers in the search and rescue sector.

Sally Lee of Palmerston North (Term started 1 November 2024)

With over 20 years in the agribusiness sector, Sally has played pivotal roles in environmental restoration and community collaboration. In Hawke's Bay, she contributed to the Pekapeka Swamp plan, working with DOC, Fish and Game, iwi, and the community. Sally also developed the Esplanade Strip under the RMA, focusing on riparian management and coastal dune protection. More recently, she has worked with the Waihi Estuary in the Bay of Plenty to promote sustainable farming practices. As a former farmer, she understands landowners' perspectives and has actively participated in native planting initiatives. An avid tramper, she has enjoyed exploring the Ruahine and Tararua Ranges.

Board meetings

The Board held six meetings during the reporting period. Venues for the meetings vary each year to ensure a wide coverage and enable members of the public in the district to attend meetings and access the Board.

Table 2: Board meeting dates and location

Board meeting date	Meeting location and venue
9 & 10 August 2024	Palmerston North – 28 North Street
4 October 2024	Teams – Online
15 & 16 November 2024	Kenepuru – 13b Wall Place
28 Feb & 1 March 2025	Palmerston North – 28 North Street
9 & 10 April 2025	Kenepuru – 13b Wall Place
6 & 7 June 2025	Masterton – 220 South Road

Attendance

The table below summarises the number of Board meetings attended by members out of the total number of meetings held during the year.

Members attended other meetings and events in their role as Board members, including subcommittee meetings and representative roles.

Table 3: Board meetings attended by members.

Board members & Meeting Dates	9 & 10 Aug 24	4 Oct 24	15 & 16 Nov 24	28 Feb 25 1 Mar 25	9 & 10 Apr 25	6 & 7 Jun 25
Anahera Nin	<input checked="" type="checkbox"/>	<input checked="" type="checkbox"/>	<input checked="" type="checkbox"/>	<input checked="" type="checkbox"/>	<input checked="" type="checkbox"/>	<input checked="" type="checkbox"/>
Asher Wilson-Goldman	<input checked="" type="checkbox"/>	<input checked="" type="checkbox"/>	<input checked="" type="checkbox"/>	<input type="checkbox"/>	<input checked="" type="checkbox"/>	<input type="checkbox"/>
Ashley Webby	<input type="checkbox"/>	<input type="checkbox"/>	<input type="checkbox"/>	<input checked="" type="checkbox"/>	<input checked="" type="checkbox"/>	<input checked="" type="checkbox"/>
Carla Bates	<input checked="" type="checkbox"/>	<input checked="" type="checkbox"/>	<input checked="" type="checkbox"/>	<input checked="" type="checkbox"/>	<input checked="" type="checkbox"/>	<input checked="" type="checkbox"/>
Manaaki Barrett	<input type="checkbox"/>	<input type="checkbox"/>	<input type="checkbox"/>	<input type="checkbox"/>	<input type="checkbox"/>	<input type="checkbox"/>
Nicole McCrossin	<input checked="" type="checkbox"/>	<input type="checkbox"/>	<input checked="" type="checkbox"/>	<input checked="" type="checkbox"/>	<input type="checkbox"/>	<input checked="" type="checkbox"/>
Pam Crisp	<input checked="" type="checkbox"/>	<input checked="" type="checkbox"/>	<input checked="" type="checkbox"/>	<input checked="" type="checkbox"/>	<input checked="" type="checkbox"/>	<input checked="" type="checkbox"/>
Ross Browne	<input type="checkbox"/>	<input type="checkbox"/>	<input checked="" type="checkbox"/>	<input checked="" type="checkbox"/>	<input type="checkbox"/>	<input checked="" type="checkbox"/>
Sally Lee	<input type="checkbox"/>	<input type="checkbox"/>	<input type="checkbox"/>	<input checked="" type="checkbox"/>	<input checked="" type="checkbox"/>	<input checked="" type="checkbox"/>
Sara Arhaim	<input type="checkbox"/>	<input checked="" type="checkbox"/>	<input type="checkbox"/>	<input checked="" type="checkbox"/>	<input type="checkbox"/>	<input checked="" type="checkbox"/>
Sonia Wansbrough	<input checked="" type="checkbox"/>	<input type="checkbox"/>	<input type="checkbox"/>	<input type="checkbox"/>	<input type="checkbox"/>	<input type="checkbox"/>

Field trips and site inspections

Field trips are an excellent opportunity for Board members to become more aware of conservation issues within their region and to meet with community members undertaking conservation activities.

Table 4: Field trips and site inspections

Field trip date	Field trip destination and purpose
9 August 2024	Papaitonga Scenic Reserve – Manawatū
15 November 2024	Paraparaumu Scenic Reserve – Kāpiti Wellington
28 February 2025	Foxton Beach Estuary – Manawatū
9 April 2025	Matiu / Somes Island – Wellington
6 June 2025	Ocean Beach – Wairarapa

Papaitonga Scenic Reserve – 9 August 2024



Figure 2

Paraparaumu Scenic Reserve – 15 November 2024



Figure 3

Manawatu Estuary – 28 February 2025



Figure 4

Matiu / Somes Island – 9 April 2025



Figure 5

Ocean Beach- 6 June 2025



Figure 6



Figure 7

Training for members

In addition to the regular updates on the Department's activities provided in the status report, which is considered at each meeting, the following was also covered this year.

- Sara Arhaim attended Te Pukenga Atawhai

Department involvement in Board meetings

DOC Staff who regularly attending our meetings include:

- Alice Heather, Regional Director, LNI.
- Rachael Mora, Statutory Manager, LNI.
- Angus Hulme-Moir, Operations Manager (Kāpiti/Wellington)
- Kathy Houkamau, Operations Manager (Wairarapa)
- Moana Smith-Dunlop, Operations Manager (Manawatu).
- Claire Jacobs, Board Support Officer, LNI.

In addition to the above the following DOC Staff also attended meetings to present to the board on various topics:

- Karen Binnie, Robert Ash, Breanna Hindmarsh, Melvin Thomas, Sara Bell, Shane Geange, Carl Walrond, Monique Oomen, Jenny Nelson-Smith, Tane Karepa, Mike Oates, Michael Harbrow, Chris Wooten, Mike Perry and Charlotte Parker.

Public Forum Attendance at Board Meetings:

- 16 November 2024- Sam Ferguson and Fiona Gordon of Horizons Regional Council regarding Foxton Beach Estuary and Ruahine Ranges.
- 28 February 2025- Anthony Davies, Jonathan Ravens, and Quentin Duthie representatives of the Friends of Belmont Regional Park and John Livingstone regarding Totara Reserve and Predator Free Initiatives.

Annual work plan

Please refer to Appendix 2 for the full Board Annual Work Programme and progress commentary.

Statutory activity

Wellington Conservation Management Strategy (CMS)

The CMS has now been operative for 6.5 years.

The Board receives verbal updates from Operations Managers intermittently at board meetings.

Management plans

Apart from ongoing work with the development of the Kāpiti Island conservation management plan, the Board has not undertaken any work involving management plans over the reporting period.

Advice and advocacy

All Board members have responsibility for liaising with other groups when opportunities arise, and some members have specific roles in liaison. The Board appointed various members to liaise with other groups and agencies.

Table 5: Board liaisons and representatives

Board members	Group/agency/organisation
Anahera Nin	KISAC
Asher Wilson-Goldman	Chairs Working Group /Taranaki Whanganui Board liaison/ East Coast Hawkes Bay Board liaison
Carla Bates	Chairs Working Group/Taranaki Whanganui Board liaison/ East Coast Hawkes Bay Board liaison
Nicole McCrossin	Wellington Harbour Islands Kaitiaki Board
Ross Browne	Ruahine Deer Advisory Group (Deer Management Plan)

Other Conservation Boards liaison

Niki McCartney is the East Coast Hawke's Bay Conservation Board member liaison to the Wellington Conservation Board.

Claire Dowsett is the Taranaki/Whanganui Conservation Board member liaison to the Wellington Conservation Board.

The Board also collaborated with other Conservation Boards on the Fast Track Approvals Bill, as well as currently sharing our draft submissions on Predator Free 2050 and Biodiversity Strategy Implementation 2025-2030 to seek joint signatures from other boards.

Authority liaison

Wendy Nelson is the NZCA member liaison with the Board. Wendy has attended most of the Board meetings during the year and updated the Board on the activities of the NZCA.

The Board received the agenda, papers and minutes of the NZCA meetings, and the Board Chair received regular communication from the NZCA. The Board also shared a field trip visit to Matiu

Somes Island on 9th April with the wider NZCA, which was an opportunity to discuss challenges and opportunities for conservation in our region.

Department advice

The Board provided advice to the Department on the following issues:

CMS milestone reporting – the Board provides ongoing advice to the Department in the design of milestone reporting and relevant content in order to track progress against the Wellington Conservation Management Strategy.

LNI Strategy and Action Plan- the Board has provided both verbal and written feedback on multiple versions of these documents, including through a workshop on priorities for our district and providing the Department with an overview of our CMS priority milestones to support this strategy formation.

The Board provided advice to the Director General (Penny Nelson) and the Minister of Conservation (Hon. Tama Potaka) in our observations on the effectiveness of the Board Chairs Working Group, and on the impact to the boards' effectiveness in late board nomination selections respectively.

Community advocacy and involvement

The Board believes that working with conservation organisations and members of the public is very important. Meetings were held in different parts of the Wellington Conservation Board's region and opportunities for the public to attend Board meetings were advertised.

Members of the public attended the Public Forum at several of the year's meetings and a range of issues were raised. The Board appreciated their input and efforts made to attend the meetings and responded by letter with a response to questions asked or concerns raised.

The Board also enjoyed meeting with conservation volunteers on their field trips and learning about their mahi for local conservation.

Community visibility

The Board maintains a presence on the Department's website. Updates from the Board were provided throughout the year on activities undertaken. The Board also provided contributions to the Conservation Boards email newsletter. A [Facebook page](#) has been set up to share public forum dates/times, relevant news from the Department for our region and sharing field trips experiences (with a particular focus on highlighting community and mana whenua conservation work).

Follower numbers are currently at 90 as of June 2025, since starting this page in August 2024. A number of community members have attended public forums as a direct response to notifications on this page, and we hope to see its following and reach grow. We have also started to share Wellington DOC specific Facebook posts, to celebrate conservation in our region.

Iwi liaison and advocacy

The Board has an informal relationship with iwi rūpū and through the district offices information relating to Board meetings are advised.

The Board also has members on KISAC and the Wellington Harbour Islands Kaitiaki Board which strengthens relationships with Ngāti Toa Rangatira and Taranaki Whānui respectively. With the development of moving toward a CMP for Kapiti Island the board will seek to support this work as needed from further discussion and direction from Ngāti Toa Rangatira.

Submissions

We have submitted on the following over this past year:

- Exploring and charging to access and modernising Conservation management.
- Fast Track approvals bill (joint board)
- Predator Free 2050 discussion document
- Biodiversity Strategy implementation plan 2025-30

Appendix 1:

Review of 2024/2025 Strategic Action Plan

2024/25 Plan action	Status	Commentary
Board Function		
Finalise Strategic Plan	Achieved. Finalised June 2024.	In place, but intended to be reviewed annually for changing conditions.
Produce Annual Plan	Achieved. Finalised June 2024.	In place, but 2025/2026 plan to be reviewed for currency in forward year planning.
Continue to attend DOC Chairs Working Group (CWG)	Achieved.	Forward year, look to DOC for update on focus and ongoing expectations of CWG
Utilise induction material for new members	Achieved.	New induction materials utilised and standard document suite used for new board members inductions by co-chairs
Finalise Communications Strategy	Achieved. Finalised April 2025	
Mana Whenua		
Build picture of Mana Whenua across our rohe	Partially Achieved. Ops teams have provided lists of engagements involving iwi we may request to attend in 2024.	With Jenny Nelson Smith (DOC) we have: -run a session in 2024 on how to lift engagement ability -Co-chairs created a suite of cultural goals for the board to improve our ability to engage (Jenny can provide great support in these). These goals need to be reviewed by the board however.
Invite Treaty ranger to present on our region	Achieved. Presentation in 2024 on the settlement process.	
Build basic engagement board sheet	Partially achieved.	Some documents and tools have been circulated by both the board and DOC staff, including waiata and karakia- however these need to be pulled together into one document.
Support the CMP for Kapiti	Achieved.	The boards delegate onto KISAC has kept the board up to date on the progress of the CMP until such time as it was ready to be progressed. Korero with KISAC is ongoing as to how we can best assist with the CMP.
Community		
Progress a list of key active groups in our region	Achieved.	Further work on this involves the finalisation of a board one pager (already in draft) and providing this with a standard email wording to ops managers to send to their community group mailing lists. We are already noticing increased

		engagement from these groups due to fast-track projects.
Local board members invite 1-2 local groups to each public forum	Achieved.	This has been occurring at each meeting via Facebook outreach, board member connection and ops manager assistance.
DOC and NZCA		
Be prepared for November DOC business planning by being clear on CMS milestones that cannot be dropped	Achieved.	The board ran 2 sessions over meetings to prioritise CMS milestones and provided these to DOC in the preparation of the LNI strategy.
Minister, Parliament and Councils		
Reach out to Horizons and GWRC for a presentation/update on key conservation issues and focuses for our region.	Achieved.	Horizons regional councillor came and presented at public forum in 2024 on Manawatu estuary and Foxton beach conservation values. GWRC Marine Scientist, alongside DOC, spoke to the board on marine values and pressures in the region in November 2024.
Continue to look for opportunities to advocate for conservation where political decisions impact it	Achieved.	The board has made a number of submissions, some joined up with other boards, on conservation-related discussion documents and legislative changes. The board has also written letters to the Department DG and The Minister for Conservation on matters that enable our function and its impact.

Appendix 2 –Annual Work Plan

Wellington Te Runanga Papa Atawhai o Te Upoko o te Ika Conservation Board

3 Year Strategic Plan June 2024 – June 2027

Text in **Blue** or blue boxes to be reviewed annually in June (at a minimum)

Draft for discussion_v1 6th June 2024

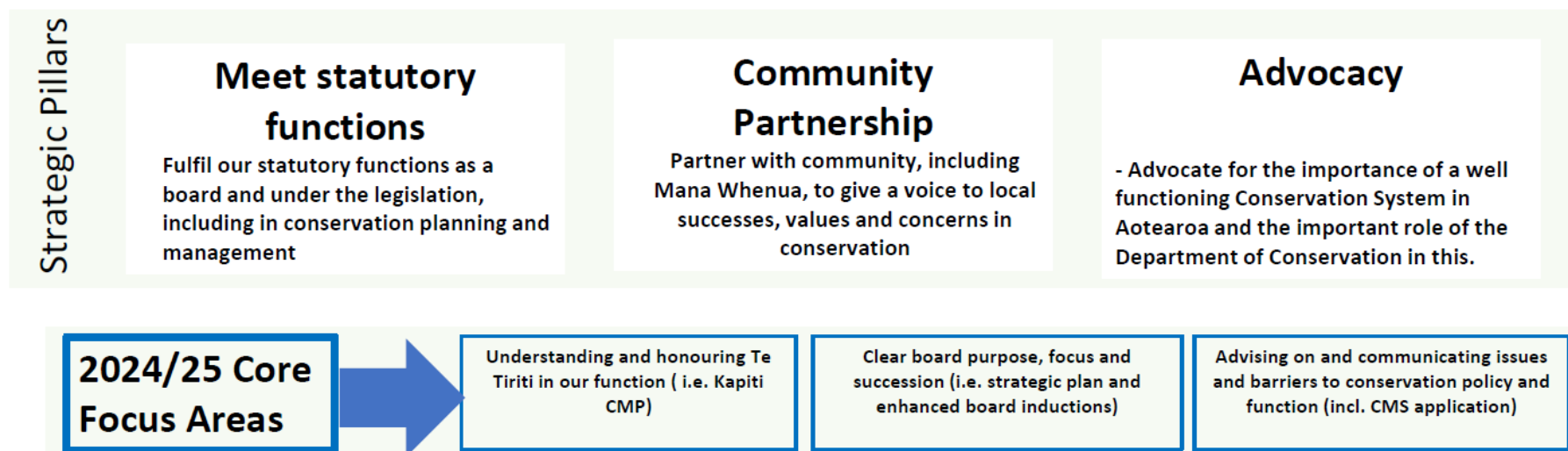


Wellington Te Runanga Papa Atawhai o Te Upoko o te Ika Conservation Board

Strategic Plan

Our Purpose:

Contribute a local voice to influence and improve conservation outcomes in the Wellington Region. Utilising our location we ensure political leadership is aware of key conservation issues.



Draft for discussion_v1 6th June 2024

Wellington Te Runanga Papa Atawhai o Te Upoko o te Ika Conservation Board

Current Statutory Actions

Current BAU Statutory Actions	3 Yearly	Annually	Every meeting	Ad Hoc.
	<p>Ensure representative on KISAC & Harbour Islands Board</p> <p>Advise on Board member selection based on skills, representation and rohe</p> <p>Input to DOC integrated planning process</p>	<p>Annual Report</p> <p>Annual Plan</p> <p>Board delegate attend annual chairs hui</p> <p>Onboarding new board members</p> <p>Voting of board chairs (with arrival of new members)</p>	<p>Public Forum advertised, inclusive of agenda & local groups contacted</p> <p>Connect with Conservation work or group (field trips) in region</p> <p>Connect with NZCA Rep and DOC leadership and operations</p> <p>Consider CMS impacts of operational updates</p> <p>Liaison reports from other regional/ inter-regional boards & our community connections</p>	<p>Identify & attend community functions in board capacity, reporting back on insights/connections</p> <p>Make submissions on relevant and important conservation & policy changes</p> <p>Provide feedback to DOC on policy changes which affect CMS</p> <p>Connect with community & other Conservation Boards on key issues, approaches & questions</p>

Draft for discussion_v1 6th June 2024

Wellington Te Runanga Papa Atawhai o Te Upoko o te Ika Conservation Board

2024 to 2027 Strategic Action Plan

	2024/25	2025/26	2026/27
Board Function	Finalise strategic plan Produce annual plan, looking year forward Continue attending delegate at DOC chairs Working Group Utilise induction material for new board members Finalise Communication Strategy	Develop annual plan for field trips Review Board to board liaison, refining at annual chairs hui Finalise our pitch to utilise for board engagement, launching off our strategic plan	
Mana Whenua	Build picture of Mana Whenua across our rohe, including settlement provisions Invite Treaty Ranger to present on our region Build basic engagement board sheet Support the CMP for Kapiti	Share key Iwi and Hapu engagement across board members /regions Enable board access to Pukenga Atawhai, either electronically or via DOC delivery or seek other resources with easy access for board	Reciprocal meetings to board meetings and other engagements with iwi/hapu including through DOC operations Build a picture/map of conservation interests and issues to inform the board in partnerships and keep updated
Community	Progress a list of key active groups in our region Local board members invite 1-2 local groups to attend/present at each meeting public forum	Set up a new FB page, if access cannot be restored and use it to promote public forums and other matters Seek invites from DOC operations on engaging with joint works with community groups	Build contact list each of the areas of the region, building in the DOC visibility Seek to nominate groups for awards and communicate funding for conservation
DOC & NZCA	Be prepared for Nov DOC business planning engagement by being clear on the CMS milestones that cannot be dropped	Create a template or process for updating other conservation boards on our work, insights, successes and issues Provide direction to DOC on WCS reporting on key CMS actions	Gather a list of important active groups in our region Draft out principles of partnership with NZCA and our board and share with other boards
Minister / Parliament/ Councils	Reach out to Horizons & GWRC for a presentation/update on key conservation issues and focuses for our region. Continue to look for opportunities to advocate for conservation where political decisions impact it (submissions/letters)	Reach out to district/city councils across our region and seek to understand their focus, funding and challenges in conservation.	Be prepared to understand potential conservation policies across all key parties with impending election process

Draft for discussion_v1 6th June 2024



Pimelea Actea - Himatangi Beach

This report is presented to the New Zealand Conservation Authority as required by the Conservation Act 1987 and distributed to interested parties. Members of the public are welcome to attend conservation board meetings. If you would like more information on the Wellington Conservation Board please see the website www.conservationboards.org.nz or contact the board support officer, at the Department of Conservation in Palmerston North (027) 417 5246 e-mail cljacobs@doc.govt.nz.