

East Coast Hawkes Bay  
Te Tairāwhiti ki Te Matau-a-Maui  
Conservation Board  
Annual Report 2024- 2025



*Shoreplover at Cape Sanctuary*

# East Coast Hawkes Bay Te Tairāwhiti ki Te Matau-a-Maui Conservation Board Annual Report 1 July 2024 to 30 June 2025

Presented to the New Zealand Conservation Authority  
pursuant to Section 6 (O) of the Conservation Act 1987

Published by  
East Coast Hawkes Bay Conservation Board  
c/o Department of Conservation  
28 North Street  
Palmerston North  
4410

ISSN 2463 3089 (print)  
ISSN 2463 3097 (online)

## **Photographs:**

**Front Cover:** Shore Plover at Cape Sanctuary by Doug Bailey

**Figure 2:** Department of Conservation GIS of ECHB CB Rohe

**Figures 3 to 5:** East Coast Hawke's Bay Conservation board on fields trips to Ahuriri & Ruatoria, photos by Claire Jacobs

**Back cover:** Rimu in the Raukumara Pae Maunga photo by Claire Jacobs

## CONTENTS

Co-Chair's Report.....	4
Introduction.....	7
Conservation Board Region / Rohe .....	7
Board functioning.....	9
Board functions under section 6m of the Conservation Act 1987 .....	9
Powers of the Board under section 6n of the Conservation Act 1987.....	9
Board membership.....	10
Members profiles.....	10
Board meetings. ....	12
Attendance.....	12
Field trips and site inspections .....	13
Department involvement in Board meetings.....	14
Visitors .....	14
Annual Work Plan.....	15
Statutory activity.....	15
East Coast Hawkes Bay Conservation Management Strategy (CMS) .....	15
Advice and advocacy.....	15
Other Conservation Boards liaison .....	15
Authority liaison.....	15
Department advice.....	15
Community visibility.....	15
Public Forum .....	16
Iwi liaison and advocacy .....	16
Submissions .....	16
Appendix I – 2024-2027 Strategic Plan.....	17
Appendix II – 2024-2025 Work Plan.....	18



## Co-Chair's Report



**Kia ora koutou,**

It is our privilege to present the Chairpersons' Report for the East Coast Hawke's Bay Conservation Board for the year ending 30 June 2025. This has been a year of meaningful progress, strengthened partnerships, and continued commitment to protecting and enhancing our region's unique natural and cultural heritage across our rohe.

### **Governance and Strategic Direction**

The Board has continued to uphold its statutory responsibilities under the Conservation Act 1987, while embracing a broader strategic vision that reflects the values of our communities and the principles of Te Tiriti o Waitangi. The implementation of a Co-Chair model has enabled more inclusive leadership and strengthened our ability to represent the diverse voices of our rohe.

Throughout the year, we have worked closely with the Department of Conservation (DOC), iwi and hapū, local authorities, and community groups to ensure that conservation efforts are collaborative, culturally grounded, and future focused. Our strategic priorities have included biodiversity protection, climate resilience, community engagement, and the integration of Te Ao Māori perspectives into conservation planning.

We have also contributed to DOC's regional integrated planning processes, ensuring that the Board's insights and local knowledge inform long-term conservation strategies. Our participation in national forums, including the NZCA Chairs Conference, has helped us stay connected to broader conservation priorities and share learnings from our region.

### **Key Achievements**

#### **1. Strengthening Te Tiriti Partnerships**

A cornerstone of our work this year has been the strengthening of relationships with iwi and hapū. We have engaged in a number of significant kaupapa that reflect a genuine commitment to partnership and co-governance, including:

- A field trip to Raukūmara Pae Maunga, where we witnessed the leadership of hapū in ecological restoration and cultural revitalisation.
- Support for Ngāti Kere in the crown reconciliation process and generational review for Te Angiangi Marine Reserve.
- Participation in the opening of Morere Hot Springs and White Pine Bush/Lake Opouahi, hosted by Maungaharuru-Tangitū Trust.
- Ongoing collaboration with Ngāti Hinepare at Balls Clearing and with the Taiao Team for Whangaokeno.

These engagements have deepened our understanding of the cultural significance of the whenua and moana and reinforced the importance of shared decision-making in conservation.

#### **2. Community Engagement and Visibility**

We have made significant strides in increasing the Board's visibility and accessibility to the public. This year, we launched a dedicated Facebook page to share updates, promote events,

and engage with our communities. We also developed a “Who We Are” presentation to introduce the Board to catchment groups and community organisations.

Our field trips to Ahuriri Estuary, Lake Opouahi, and Balls Clearing provided valuable opportunities to connect with local stakeholders, understand on-the-ground conservation challenges, and celebrate community-led initiatives. We also presented at the Hawke’s Bay Catchment Group Leads conference, further strengthening our regional networks.

### **3. Advocacy and Submissions**

The Board has actively engaged in policy advocacy and submissions on matters of national and regional importance. We submitted on:

- The proposal to charge for access to some public conservation land.
- The Modernising Conservation Land Management proposal.

We also contributed to DOC’s 5-year regional integrated strategies for both the Lower North Island and Eastern North Island, providing feedback that reflects the priorities and concerns of our communities.

In addition, we advocated for the prioritisation of McLean’s Bush Scenic Reserve and supported the Ōtātara Pa Virtual Fencing Grazing Pilot Project, which explores innovative approaches to land management and biodiversity protection.

### **4. Operational Collaboration**

Our relationship with DOC staff has been constructive and collaborative. We have appreciated the regular updates from Operations Managers, Statutory Managers, and Regional Directors, and we acknowledge the efforts of the Board Support Officer in ensuring the smooth running of our meetings and field trips.

Workshops on integrated planning and strategy development have helped align our efforts with DOC’s operational priorities, and we have maintained open lines of communication on key issues such as infrastructure reinstatement, wild animal management, and visitor network planning.

### **Challenges and Opportunities**

This year has presented a number of challenges, including the ongoing impacts of climate change, the need for infrastructure recovery following extreme weather events, and the resource constraints faced by both DOC and community groups.

Despite these challenges, we have seen opportunities for innovation and growth. The use of technology in conservation monitoring, the rise of community-led initiatives, and the increasing recognition of Te Ao Māori in environmental management all point to a more inclusive and resilient future.

We are particularly encouraged by the momentum behind projects like Raukūmara Pae Maunga, which exemplify the power of partnership and the potential for large-scale ecological restoration.

### **Acknowledgements**

We extend our sincere thanks to our fellow Board members for their dedication and leadership. Your diverse expertise and shared passion for conservation have been instrumental in our progress.

We also acknowledge the support of DOC staff, iwi and hapū partners, local government representatives, and the many volunteers and community members who contribute to conservation across our region. Your efforts are the foundation of our collective success.

### **Looking Ahead**

As we look to the year ahead, we remain committed to our vision of a thriving natural environment that is cherished, protected, and sustained by all. We will continue to advocate

for biodiversity, cultural heritage, and community wellbeing, and we will strive to ensure that conservation is embedded in the values and daily lives of our people.

**Ngā mihi nui,**

Co-Chairs

**John Menneer and Rena Kohere**

The image shows two handwritten signatures in blue ink. The first signature on the left is 'John Menneer' and the second signature on the right is 'Rena Kohere'. Both are written in a cursive, flowing style.

## Introduction

This is the Eleventh East Coast Hawkes Bay Conservation Board Annual Report. Section 6(O) of the Conservation Act requires conservation boards to provide the New Zealand Conservation Authority with an annual report as soon as practical after 30 June each year. In recognition of this requirement, the East Coast Hawkes Bay Conservation Board submits this annual report.

Conservation boards are appointed by the Minister of Conservation under section 6(P) of the Conservation Act 1987 (Act). Board functions are outlined in section 6(M) and the powers, which enable the conservation boards to carry out those functions, are under 6(N) of the Act.

Conservation boards are independent advisory bodies, established by statute. They represent the community and offer interaction between communities and the Department of Conservation, within their area of jurisdiction.

Conservation boards have several statutory roles under various Acts including:

- advising the Department and the Authority on how conservation management strategies and plans will be put into practice.
- the approval of Conservation Management Plans
- the recommendation of National Park Management plans to the Authority for approval
- advising the Department and Authority on conservation matters, and proposed changes to status of land of national and international significance
- liaising with the regional Fish and Game Council on conservation matters
- carrying out other powers delegated by the Minister of Conservation, the Conservation Act, or any other Act.

Conservation boards also have several functions under section 30 of the National Parks Act 1980. These functions include recommending the review or amendment of national park management plans and recommending approval of these plans by the Authority.

## Conservation Board Region / Rohe

The East Coast / Hawke's Bay Board's area of jurisdiction covers the area of 3,268,296 hectares.

The jurisdiction extends from Te Araroa (north of Gisborne) to Mangaorapa (Central Hawke's Bay) on the East coast of the North Island. The area also extends out to the 12-nautical mile limit with respect to coastal and marine issues, and out to the 200-nautical mile limit with respect to protected species.

Public conservation land and waters make up 5.47% of all the Board's total district.

This consists of:

- 175,894 hectares of Public Conservation Land
- 2,916 hectares of Marine Reserve

### Conservation features of the area

The main features of Public Conservation Land and Waters within the Board's boundaries are:

- Kaweka Forest Park - 61,457 ha
- Raukumara Conservation Park - 51,582 ha
- 91 Stewardship Areas - 47,290 ha
- 61 Scenic Reserves - 10,225 ha
- 155 Marginal Strips - 2,864 ha



- 10 Recreation Reserves - 83 ha
- 5 Historic Reserves - 1,553 ha
- 30 Other Reserves - 678 ha
- 2 Marine Reserves - 2,916 ha
- 1 Specially Protected Areas - 160 ha

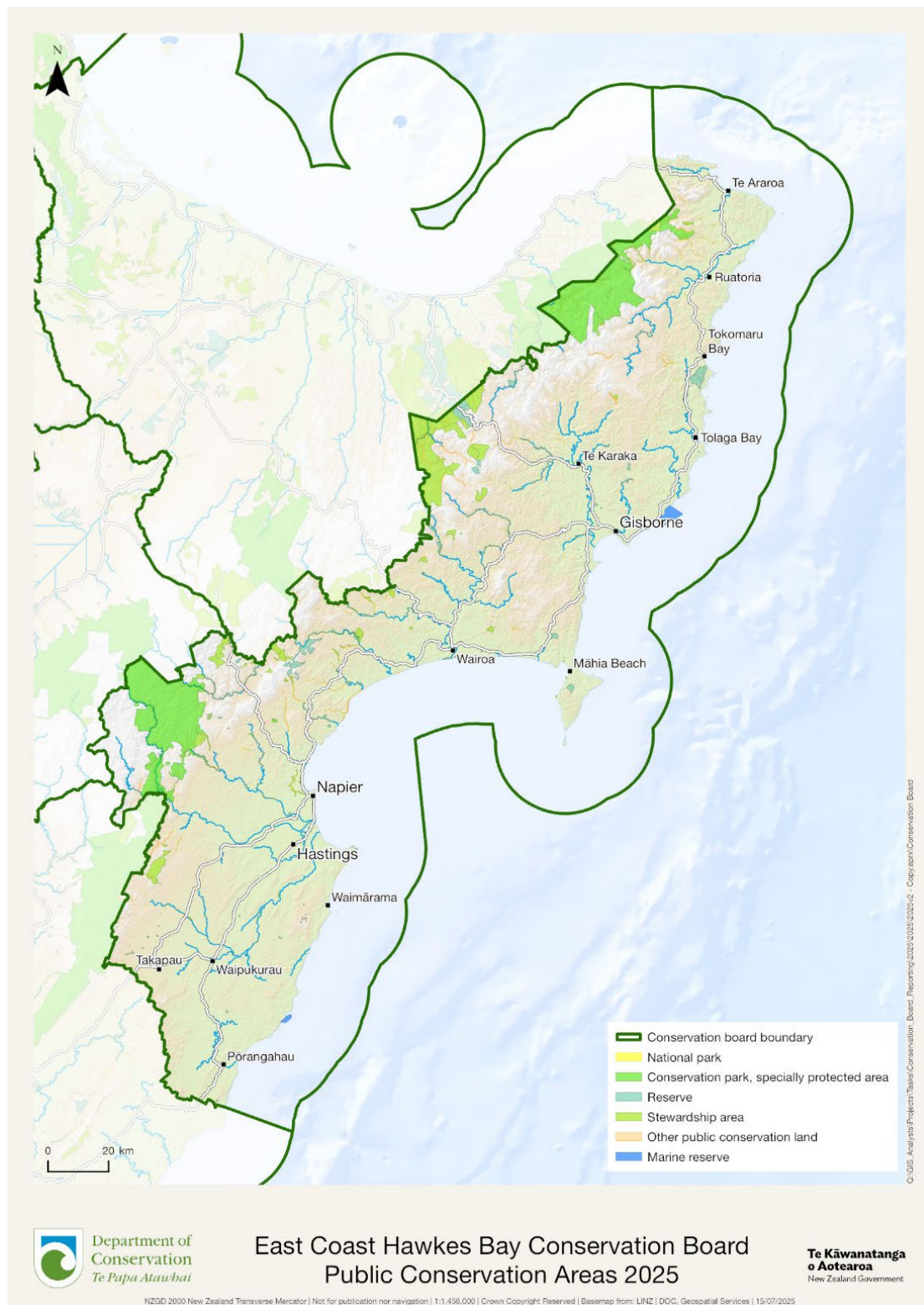


Figure 1 ECHB CB Rohe



## Board functioning.

### Board functions under section 6m of the Conservation Act 1987

The functions of the Board are:

1. To recommend the approval by the Authority of conservation management strategies, and the review and amendment of such strategies, under the relevant enactments
2. To approve conservation management plans, and the review and amendment of such plans, under the relevant enactments
3. To advise the Authority and the Director-General on the implementation of conservation management strategies and conservation management plans for the area within the jurisdiction of the Board
4. To advise the Authority or the Director-General:
  - a. On any proposed change of status or classification of any area of national or international importance; and
  - b. On any other conservation matter relating to any area with the jurisdiction of the Board
5. To liaise with any Fish and Game Council on matter within the jurisdiction of the Board
6. To exercise such powers and functions as may be delegated to it by the Minister under this Act or any other Act.

### Powers of the Board under section 6n of the Conservation Act 1987

1. Every conservation board shall have all such powers as are reasonably necessary or expedient to enable it to carry out its functions.
2. Without limiting the generality of subsection (1), each conservation board may –
  - a. Advocate its interests at any public forum or in any statutory planning process; and
  - b. Appoint committees of members and other suitable persons, and delegate to them functions and powers.
3. The power conferred by subsection (2)(a) shall include the right to appear before courts and tribunals in New Zealand and be heard on matters affecting or relating to the Board's functions.

## Board membership.

There were 7 Board members for the reporting year appointed by the Minister of Conservation. Rena Kohere and John Menneer were appointed as Co-Chairs.

The following table lists the membership of the Board between 1 July 2024 and 30 June 2025 and their term of office.

**Table 1: Board membership**

Board member	Area	Term start	Term end	Years served
Rena Kohere (Co-Chair)	Gisborne	01/07/2021	30/06/2027	4 years
John Menneer (Co-Chair)	Wairoa	01/07/2021	30/06/2025	4 years
Doug Bailey	Napier	01/07/2020	30/06/2026	5 years
Lois Easton	Gisborne	01/07/2023	30/06/2025	2 years
Niki McCartney	Gisborne	01/07/2021	30/06/2026	4 years
Keri Ropiha	Pōrangahau	01/07/2022	30/06/2025	3 years
Peter Simpson	Havelock North	01/11/2024	30/06/2027	7 months

## Members profiles

### Rena Kohere (Co-Chair)

Rena (Ngāti Porou, Rongowhakaata, Te Aitanga a Māhaki, and Ngāi Tahu) grew up on whānau land at the East Cape Lighthouse, Te Araroa. She was manager of Tairāwhiti Environment Centre for 5 years and is now working in Cyclone Recovery at Gisborne District Council. She has been involved in environmental kauapa across Tairāwhiti with a particular focus on hapū and community led projects, Jobs4Nature, and regional strategy/ governance. She has experience working with local and central government, iwi and hapū, and diverse community groups and is a member of the hapū led Taiao Team for Whangaokeno.

### Doug Bailey

Doug grew up in Southern Hawke's Bay and now lives at Napier where he is an MPI On Farm Support Regional Advisor. He is a former Chartered Accountant and holds a Certificate in Company Directing. Doug is involved in several environmental projects including project lead for the restoration of the 65ha Te Opoko Paoa / Wanstead Swamp, Wainui Rātā, and is a pre-European history researcher in Central Hawke's Bay District.

### John Menneer (Co-Chair)

John grew up in the Hawke's Bay region and, as an avid hunter and tramper, has exceptional knowledge of the region. He has experience as an environmental researcher providing the ability to analyse and interpret research data, and knowledge of NZ geology, landscapes, and ecology.

John has experience working in high-level strategic and project management positions. He has excellent leadership skills and has developed effective working relationships with iwi, local councils, contractors, and other stakeholders.

### Nicola McCartney

Niki is experienced in governance, strategic leadership, and executive management. She is a Marine Mammal Medic with Project Jonah and has developed strong connections to the local community and iwi. Ms. McCartney was nominated by former East Coast Hawke's Bay Conservation Board member Penny Shaw.

### Lois Easton

Lois is a self-employed environmental consultant at Kereru Consultants and the Secretary of the Waimatā Catchment Group in Tairāwhiti. Lois has an MSc in Environmental Science and Botany and has been working in environmental planning and resource management for over

25 years. She has a particular passion for riparian and stream restoration projects and a long track record of supporting community projects around this Kaupapa. She brings extensive experience in local government planning, nature conservation, terrestrial science and community engagement and is well connected in the local conservation community.

### **Keri Ropiha**

Keri is of Ngāti Kahungunu ki Tamatea, Ngāti Raukawa, and Ngāi Tahu descent and has strong governance experience at local and regional Government levels and is a member of various Iwi and community boards. She provides excellent engagement with the community and strong connections with hapū and iwi on local issues. Keri offers in-depth knowledge of applying mātauranga Māori and te ao Māori to strategic planning and policy and has expertise in applying the Treaty of Waitangi / Te Tiriti o Waitangi. She recently acquired a Master of Professional Practice to enhance her Bachelor of Applied Management (Distinction).

### **Peter Simpson**

Peter was raised in Hawke's Bay on a family sheep and beef farm maintained along the Tutaekuri River. His family are multi-generational trampers and amateur botanists with a passion for the conservation of Hawke's Bay's hardwood Podocarp forests. Peter studied engineering and geology and spent 19 years offshore in financial investing and trading. He is experienced in organisational strategy, governance, and risk management and is presently Head of Commercial Operations – Orchards for Mr Apple. He is also the independent financial advisor to the Eastern and Central Community Trust.

## Board meetings.

The Board held five out of six meetings during the reporting period due to insufficient numbers for a Quorum. Venues for the meetings vary each year to ensure wide coverage and enable members of the public in the district to attend meetings and access the Board.

**Table 2: Board meeting dates and location**

Board Meeting Dates	Meeting location and venue
5 July 2024	Online
18 October 2024	Gisborne
22 & 30 August	Cancelled – no quorum.
28 Nov & 6 Dec 2024	Online 28 November and Hawke’s Bay 6 December
7 & 8 March 2025	Ruatoria and Gisborne
1 & 9 May 2025	Online on 1 May and Hawke’s Bay 9 May

## Attendance

The table below summarises the number of Board meetings attended by members out of the total number of meetings held during the year.

Members attended other meetings and events in their role as Board members, including subcommittee meetings and representative roles.

**Table 3: Board meetings attended by members.**

Board members & Meeting Dates	5 Jul 24	18 Oct 24	28 Nov 24 6 Dec 24	7 & 8 Mar 25	1 & 9 May 25
Doug Bailey	1/1	1/1	2/2	2/2	2/2
John Menneer	1/1	1/1	2/2	2/2	2/2
Keri Ropiha	1/1	1/1	1/2	2/2	1/2
Lois Easton	0/1	1/1	2/2	2/2	0/2
Niki McCartney	1/1	1/1	2/2	2/2	2/2
Peter Simpson (appointed 1/11/24)	n/a	n/a	1/2	2/2	2/2
Rena Kohere	1/1	1/1	1/2	2/2	1/2

## Field trips and site inspections

Field trips are an excellent opportunity for Board members to become more aware of conservation issues within their region.

**Table 4: Field trips and site inspections**

Field trip date	Field trip destination
6 December 2024	Ahuriri Estuary Boardwalk – Napier
7 March 2025	Raukumara Pae Maunga – Ruatoria
9 May 2025	Balls Clearing – Hawke’s Bay

**6 December 2024 – Ahuriri Estuary Boardwalk – Napier**



*Figure 2*

**7 March 2025 Raukumara Pae Maunga – Ruatoria**



*Figure 3*



Figure 4

## Department involvement in Board meetings

Department staff attended throughout the year.

**Alice Heather** (LNI) and **Jade King-Hazel** (ENI), **David Hayes** (Acting ENI Director Ops) Regional Directors, attended meetings and provided Directors updates.

**Rachael Mora** (LNI), **Wihi Meelker-Ngatai** (ENI), and **Marion Nieuwland** (ENI) Statutory Managers, attended meetings and provided Statutory Managers’ updates.

**Grant Bennett** (Operations Manager – Hawkes Bay) and **Matt Tong** (Operations Manager – Gisborne) and **Lindsay Tallman** (LNI Senior Ranger Community in lieu of Operations Manager for Hawke’s Bay) attended meetings when they took place in their operational Districts to provide District Context and District Operations Reports. Meetings taking place outside of District were attended virtually via MS Teams.

**Administrative Support** is provided to the Board by the Board Support Officer (Claire Jacobs), who arranged, attended, and provided administration services to Board Meetings.

**Karen Binnie** (LNI Regional Planning and Performance Advisor) and **Don Heron** (LNI Regional Planner) held the LNI Integrated Planning Workshop with the board.

**Ario Rewi** (Communications and Engagement Manager) and **George Cooper** (Deer and Goat Manager) presented on Raukumara Pae Maunga for Te Tairāwhiti.

**Mike Oates**, (Principal Governance and Engagement Advisor) **Michael Harbrow** (Principal Strategy Implementation Advisor) presented on Te Mana o te Taiao.

**David Carlton** (Senior Wild Animals Advisor – National Programme) presented on HOSI – Wild Animals

**Carl Walrond** (Programme Manager Heritage and Visitor) and **Monica Oomen** (Senior Engagement Advisor – Strategic Communications and Engagement) presented on Future Visitor Network

**Raukumara Pae Maunga Restoration Project Team** – **Ario Rewi** – Communications and Engagement Manager Ngāti Porou, **Wattie Goldsmith** (WG) – RPM Operations Manager Ngāti Porou, **Heath Hovell** (HH) – RPM Operations Taiao Ranger, **Dave Morice** (DM) – RPM Operations Supervisor, **Lisa Beach** (LB) – RPM Community and Engagement Advisor, and **Raiha Blane** (RB) – RPM Raukumara Pae Maunga Biodiversity Ambassador

**Peter Roberton** (Senior Policy and Negotiations Advisor) presented on Treaty Settlements.

## Visitors

**Iain Maxwell** – Hawke’s Bay Regional Council – Integrated Catchment Management Group Manager

## Annual Work Plan

Please refer to Appendix II

## Statutory activity

### East Coast Hawkes Bay Conservation Management Strategy (CMS)

The Department of Conservation has advised that the current CMS is not a priority of theirs for review.

## Advice and advocacy

All Board members have responsibility for liaising with other groups when opportunities arise, and some members have specific roles in liaison. The Board appointed various members to liaise with other groups and agencies.

**Table 5: Board liaisons and representatives**

Board member	Group/agency/organisation
Doug Bailey	Hawkes Bay Regional Council, Te Angiangi Marine Reserve, Biodiversity Hawkes Bay
Lois Easton	Gisborne District Council Fish & Game Eastern Te Tapuwae o Rongokako Marine Reserve Forest and Bird

### Other Conservation Boards liaison

The Board allocates liaison roles with their immediate neighbouring Boards.

Rena Kohere – Bay of Plenty Conservation Board and National Board Chairs

John Menneer – Tongariro/Taupo Conservation Board

Niki McCartney – Chatham Islands Conservation Board and Wellington Conservation Board

### Authority liaison

Greg Duly served as the NZCA liaison to the Board for the first half of the financial year before stepping down from the role. He was succeeded by Aroha Te Pareake Mead, who was appointed as the new NZCA liaison to the East Coast Hawke's Bay Conservation Board.

The Board receives the agenda, papers, and minutes of the NZCA meetings, and the Board Chair receives regular communication from the NZCA.

### Department advice

The Board provided advice to the Department on the following issues:

- Ōtātara Pa Heritage Reserve Virtual Fencing Grazing Pilot Project
- LNI 5-Year Integrated Strategy Workshop Input
- ENI 5-Year Integrated Strategy Feedback

### Community visibility

The Board maintains a presence on the Department's website. Updates from the Board were provided throughout the year on activities undertaken. The Board now has a presence on Facebook, with their own Facebook page.



Presented to Hawke's Bay Catchment Group Leads conference.

## **Public Forum**

7 March 2025 Hui - **Nicki Davies** (Gisborne District Council – Programme Manager – Tairāwhiti Regional Biodiversity Strategy) presented to the board and **Wattie Goldsmith** (Raukumara Pae Maunga Project) attended as well.

## **Iwi liaison and advocacy**

In addition to Board meetings, board members work closely with iwi and hapū in the rohe. Refer to the Work Plan for further information.

## **Submissions**

The board submitted the following over this past year:

- Charging for access to some public conservation land
- Modernising Conservation Land Management proposal.

## Appendix I – 2024-2027 Strategic Plan

### East Coast Hawke's Bay Conservation Board 2024-2027 Strategic Plan

*To contribute a community voice that will influence and improve local conservation outcomes*



## Appendix II – 2024-2025 Work Plan

Keys:	Meaning:
	Action completed
	Action underway or ongoing
	Action overdue

KEY FOCUS AREAS	Actions 2024-25	STATUS	Progress commentary
<b>Statutory Functions</b>	The board embeds the principles of Te Tiriti o Waitangi in accordance with the obligations of section 4 of the Conservation Act in all aspects of work		<ul style="list-style-type: none"> <li>Board members improving their cultural capability</li> <li>Supported DOC in their engagement with Iwi/hapu</li> </ul>
	Board members actively liaise with specified groups		<ul style="list-style-type: none"> <li>Liaison reports from specified interest groups</li> </ul>
	Board chair attends NZCA		<ul style="list-style-type: none"> <li>Co-Chairs attended the Chair's Conference hosted by New Zealand Conservation Authority.</li> </ul>
	Noting that the CMS is on hold, review and contribute to DOC's 5-year regional plans		<ul style="list-style-type: none"> <li>Implemented Co-Chair model</li> <li>Contributed to policy development via submissions and advice</li> </ul>
<b>Te Tiriti Partnerships</b>	Relationships with Iwi/Hapu are improved		<ul style="list-style-type: none"> <li>Field trip to Raukūmara Pae Maunga (hapu in place owning project)</li> </ul>
	Iwi/Hapu are contributing to decision making through a partnering process		<ul style="list-style-type: none"> <li>Virtual fencing project at Ōtātara Pa</li> <li>Field trip to Lake Opouahi hosted by Maungaharuru-Tangitu Trust (cultural storytelling)</li> </ul>
	Board has effective working relationship with stakeholders in the Raukūmara Pae Maunga and Kaweka Forest Park		<ul style="list-style-type: none"> <li>Attended opening of White Pine Bush (Maungaharuru-Tangitu Trust)</li> <li>Updated Te Angiangi Marine Reserve report and supported Ngati Kere in a reconciliation process</li> <li>Attended opening of Morere Hot Springs</li> <li>Board appointment to Te Tapuwae o Rongokako committee</li> <li>Field trip to Balls Clearing hosted by Ngati Hinepare</li> </ul>

KEY FOCUS AREAS	Actions 2024-25	STATUS	Progress commentary
Community Engagement	Increase board engagement and networking with the community to understand and reflect their interests in the Board's work		<ul style="list-style-type: none"> <li>Field trip to Ahuriri Estuary</li> <li>Developed ECHBCB Facebook page with regular updates</li> <li>Board identified key community groups and liaised with these groups.</li> <li>Invited community to speak at board public forums</li> <li>Reviewed final draft of Te Angiangi Marine Reserve report and provided feedback</li> <li>Offered support for process of generational review of Te Tapuwae o Rongokako</li> <li>Successfully advocated for fencing of McLean's Bush Scenic Reserve</li> <li>Developing database of community stakeholders for public forum</li> <li>Developed 'Who we Are' slide presentation for community groups and catchment groups</li> <li>Advocated for the initiation of community meeting at Lake Tutira</li> <li>Presented to Hawke's Bay Catchment Group Leads conference</li> </ul>
	Complete generational review of Te Angiangi Marine reserve		
	Advocate support for timely generational review of Te Tapuwae o Rongokako		

KEY FOCUS AREAS	Actions 2024-25	STATUS	Progress commentary
Advocacy	Engage in relevant regulatory and policy submissions and other government proposals impacting conservation land		<ul style="list-style-type: none"> <li>Agreed process for reporting on strategic regional priorities to board.</li> <li>Collaborated in the development of the LNI 5-year Regional Integrated Workplan/Strategy</li> <li>Provided feedback to the ENI 5-year Regional Integrated Workplan/Strategy</li> <li>Engaged in the Fast-Tracking Bill knowledge sharing to understand and develop a response process.</li> <li>Identified risk, opportunities and successes and communicated these to DoC senior management and Regional Directors where appropriate</li> <li>Brought together key parties involving Ngati Pāroa for Ōtātara Reserve Virtual Fencing Grazing Pilot Project.</li> <li>Submitted on 'Modernising Conservation Land Management' proposal</li> <li>Submitted on 'Exploring charging for access to some Public Conservation Land'</li> <li>Advocated to raise priority status of McLean's Bush Scenic Reserve</li> </ul>
	Work collaboratively with DOC <b>Operations Directors</b> to understand their regional priorities and integrated strategy		
	Work collaboratively with <b>Statutory Managers</b> to understand their operational priorities and challenges		
	Advocate and prioritise for practical reinstatement of DoC sites and infrastructure for community, biodiversity, and heritage.		
	Advocate for biodiversity and heritage within regional climate adaptation planning with relevant agencies/stakeholders.		



*Rimu found in Raukumara Pae Maunga Ruatoria with Lisa, Niki and Rena.*

This report is presented to the New Zealand Conservation Authority as required by the Conservation Act 1987 and distributed to interested parties. Members of the public are welcome to attend conservation board meetings. If you would like more information on the East Coast Hawkes Bay Conservation Board, please see the website [www.conservationboards.org.nz](http://www.conservationboards.org.nz) or contact the Board Support Officer, at the Department of Conservation in Palmerston North phone 027 417 5246 or e-mail Claire Jacobs [cljacobs@doc.govt.nz](mailto:cljacobs@doc.govt.nz).