



*Te Rūnanga Whakauka o Kahurangi ki Kaikōura*  
**NELSON MARLBOROUGH CONSERVATION BOARD**

*Herea kia Kōtahi - Working Together*



# **Nelson Marlborough Conservation Board Annual Report 2023-2024**



# Annual Report of the Nelson Marlborough Conservation Board Te Rūnanga Whakauka o Kahurangi ki Kaikōura

For the period 1 July 2023 to 30 June 2024

*Presented to the New Zealand Conservation Authority / Te Pou Atawhai Taiao O  
Aotearoa pursuant to section 60 of the Conservation Act 1987*

Cover photo: *Nelson Marlborough Conservation Board members and DOC staff at Onetahua Marae  
- Golden Bay.*

*PHOTO: M Reihana*

*Published by*

Nelson Marlborough Conservation Board  
c/- Department of Conservation  
Private Bag 5  
Nelson

[www.conservationboards.org.nz](http://www.conservationboards.org.nz)  
[nelsonmarlboroughboard@doc.govt.nz](mailto:nelsonmarlboroughboard@doc.govt.nz)

ISSN 1176-7065 (print)

ISSN 1178-4113 (online)

July 2024

DOC-7612803

# LETTER FROM THE CHAIRS

---

Edward Ellison  
Chairperson, New Zealand Conservation Authority  
PO Box 10420  
Wellington 6143

23 August 2024

Tēnā rā koe Edward,

E te tutahi ngā mihi ki atu ngā mate kua ngaro i te pō, moe mai rā e te rangatira o Roger Gaskell, haere atu rā kua wheturangitia o Matariki e. Kia koutou ngā hunga ora, ngā iwi kaitiaki me ngā rangatira o ngā poari o te motu nei, tēnei te mihi kia koutou kātoa. E te minita tēnei te mihi kia koe, me ngā kaimahi o Te Papa Atawhai tēnā rā koutou kātoa, ā, mānawatia a Matariki. Kei te mihi mātou o te kaupapa hirahira, e tiaki ana mātou ki ngā taonga tuku iho o ngā tūpuna ki Te Taihū o te Waka a Māui e.

The board wants to acknowledge the passing of Roger Gaskell, late staff member from the Motueka Area office. He was a keen botanist and had worked for the department for a very long time and supported many flora projects in Te Taihū and a significant loss for our conservation community. The board also wants to acknowledge Roy Grose who was Regional Director who has recently retired. He made a significant contribution to our rohe and established strong relationships with our Te Taihū iwi and although at times he was in a rock and a hard place was well respected amongst our iwi and community leaders which was apparent at his poroporoaki. He also provided a strategic overview to our board which helped us to understand the department's position and priorities, we wish Roy the best in his next phase. We now welcome Martin Rodd as our new NSI director. Martin has worked in the rohe for a while and is well known. We look forward to building a good working relationship with Martin. The board also acknowledges Sally Gepp our CA liaison who has been appointed to the Kings Council, amazing achievement.

The Nelson Marlborough Conservation Board has continued to work with the newly adopted Tangata Tiriti co-chair model arrangement, with Aneika Young and Nick Eade fulfilling these roles. Our three new members appointed in 2023, Brian McGurk, Jen Skilton and Serean Adams, have all become valued members of the team over the past year. We also acknowledge Harvey Ruru who will see his term out and step down and we are yet to hear of new appointments and further departures for the 2024/25 year.

The Board continues to work with regional partners, providing input from local authorities and other agencies as appropriate. Specific board topics have been handled by Board committees focused on: Te Ao Māori (Iwi Komiti); Permissions; and Health & Safety; Tasman Environmental Trust with a Board representative, Molesworth and the local Biodiversity Strategies for NCC and TDC. The Board also continues the support of the community and the projects on the ground through site visits and the public forum updates. The Board liaison roles continue with the West

Coast Tai Poutini Conservation Board (WCTPB) and Canterbury Aoraki Conservation Board (CACB).

We continue to receive valuable knowledge and input from our Pou Tairangahau Barney Thomas and Treaty Settlement Ranger Aroha Gilling at meetings, including presentations on issues such as (s)4 and settlements, coupled with knowledge of Te Taihū iwi and the Department. The Board's Iwi Komiti continues to play a key role in the commitment to Te Tiriti o Waitangi and lead the Board on iwi relevant issues and kaupapa, Te Ao Māori capability of iwi history, marae kawa, tikanga, engagement and iwi DOC related relations as well as supporting board tikanga and ngā uara. Meetings are held on marae or in iwi spaces with a focus on the region we meet in, and iwi are invited to present their kaupapa and/or to sit in our hui if they are interested. This year we have had a noho marae at Onetāhua Marae with Manawhenua ki Mohua (Te Ātiawa, Ngāti Rārua, Ngāti Tama) and we also held our hui at Te Hora Marae with Ngāti Kuia. We are working through two management plans in the spirit of Te Tiriti Co-Management Plan "Te Pokohiwi Wairau Bar" and the Molesworth Management Plan, and we continue to work with our iwi across our rohe.

The board continues to advocate for the remuneration for iwi involvement on the board, sub-committees and whānau, hapū and iwi members who are engaging with DOC on the ground who need to be appropriately resourced. As a result, the iwi Komiti have discussed where the relationship sits with iwi? On the Board, at the iwi GM, CEO level, with whānau, hapū on the ground? How should this happen for the Department? We have iwi members on our Board and the appointment process sits with the Minister for their roles e.g. 'waka approach' to gain adequate representation across our rohe as well as the Kai Tahu Statutory roles on the board. The board acknowledges the role of iwi on these Boards, and we encourage further support and resourcing for iwi across all levels of the Department.

The Board has been concerned at some of the conservation and environmental direction of the new Coalition government and has submitted on two Bills before parliament - the Fast Track Approvals Bill and the Resource Management (Extended Duration for Coastal Permits for Marine Farms) Amendment Bill. Both Aneika Young and Nick Eade appeared before the relevant Select Committees to speak to these submissions. NMCB opposed the Fast Track Bill as it erodes democratic decision-making, manawhenua rights and interests, through the reduction of iwi consultation and community participation impacting the role of environmental and conservation groups such as this conservation board. NMCB opposed the Resource Management (Extended Duration of Coastal Permits for Marine Farms) Amendment Bill, which is another alarming piece of legislation coming from this government and has major implications around a range of conservation issues relating to marine farms in the region and surrounding ecosystems. In addition, the Bill overrides the Crown's obligation to honour Te Tiriti o Waitangi and recognise the role of manawhenua hapū and iwi with respect to decision-making and management of the coastal environment.

Several board members attended the West Coast Tai Poutini and Aoraki Canterbury Joint Board Hui (20<sup>th</sup> – 21<sup>st</sup> February 2024) in Moana, Lake Brunner (Kotuku Whakaoho). Day One included field trips with both boards WCTP and CACB members at Ivetagh Bay where we were briefed on local response from landowner to water quality issue in Lake Brunner and Predator Free Proposal at Te Kinga. We also had an workshop updating all on Aoraki/Westland NP Management Plan, a briefing from NZCA board member for WCTPCB Metiria Turei and finally a presentation from Barry Ward (WCTPCB member) on the Wellington Biodiversity Framework, a method of enabling different groups and projects to identify areas of operations and methodologies. We have another joint board hui with the WCTPB next month. These

hui have been valuable for all boards to make connections and to work together on shared DOC kaupapa.

Minister Tama Potaka came to our rohe in May we welcomed him to Te Āwhina Marae where he had an audience with manawhenua before he went out to the Abel Tasman National Park. Iwi made recommendations – Re Name of National Park, more Māori recruitment in DOC, support the Pou Takawaenga roles, Māori Wards and to support those, cultural significance of Abel Tasman and Kaiteretera where he was visiting. There was also patai around the protection of our wāhi tapu Te Puna Wai o Riuwaka (Riuwaka Resurgence) and the Sams Creek from mining which is part of the Te Waikoropūpū catchment. The Abel Tasman Visit was an opportunity for the minister to understand our local taonga in place. We were able to provide tikanga from our manawhenua iwi while in the park, there was a focus on DOC operations, visitor levies and financial opportunities to support DOC funds, Kotahitanga with iwi, DOC and conservation initiatives e.g. Project Janszoon, Abel Tasman Birdsong Trust.

The National DoC Pūkenga was also held in our rohe at Te Āwhina Marae this year. Some of our board members took part and manawhenua supported staff. Ngā mihi to Barney and Aroha on hosting and the national team of Pou Tairangahau who were running the Pūkenga.

A significant priority for the Board is the on-going concerns about our current outdated CMS, which is one of the oldest in the country and aware of the new planning review and re-prioritisation that is in progress. We are hoping that planning teams and boards will get a resource injection to initiate this work, and we look forward to seeing the progress with the West Coast Tai Poutini Board CMS process and other boards from around the motu. We acknowledge the importance of working through these plans with manawhenua iwi and we look forward to seeing how this can eventuate in the NSI.

Our board have a culture that has been built on the backs of those who have been before us and is guided by our 'Tikanga mō te Poari' document and values. We acknowledge the support provided to the Board by our whānau, hapū and iwi, communities, the Department, specifically by the Pou Tairangahau, Treaty Ranger, Operations Director, Statutory Manager and Board Support Officer. We will continue to be a voice and provide a kaitiaki role on behalf of our communities to enhance the mauri of our taiao and taonga in the spirit of Te Tiriti o Waitangi.

Nō reira tēnā rā koutou kātoa.

E kii ana te Whakatauki:

“Toitū te marae a Tāne-Mahuta, Toitū te marae a Tangaroa, Toitū te tangata”  
*If the land is well and the sea is well and the people will thrive.*



Nick Eade

Aneika Young and Nick Eade  
Chairperson and Deputy (Co-Chairs)  
Nelson Marlborough Conservation Board



# CONTENTS

## Table of Contents

1.	INTRODUCTION .....	9
2.	ROHE .....	9
	2.1. Tangata whenua .....	10
	2.2. Conservation features of the area .....	10
	2.3. Conservation issues in the area .....	10
3.	FUNCTIONS .....	12
	3.1. Board functions under section 6M of the Conservation Act 1987 .....	12
	3.2. Board powers under section 6N of the Conservation Act 1987 .....	12
	3.3. Board functions under section 30 of the National Parks Act 1980 .....	12
4.	MEMBERSHIP .....	13
	4.1. Members' profiles .....	14
5.	MEETINGS AND FIELD TRIPS .....	16
	5.1. Agendas .....	16
	5.2. Members' attendance .....	17
6.	MAHI .....	18
	6.1. Standing Committees .....	18
	6.2. Representatives and Board appointees .....	18
	6.3. Liaison roles .....	18
	6.4. Other events and training .....	19
7.	STATUTORY ACTIVITY .....	19
	7.1. Annual Work Plan .....	19
	7.2. Nelson Marlborough Conservation Management Strategy (CMS) .....	19
	7.3. Management Plans .....	20
8.	ADVICE AND ADVOCACY .....	20
	8.1. Advice to the Department .....	20
	8.2. Submissions .....	17
	8.3. Community advocacy and involvement .....	20
	8.4. Community visibility .....	21
	8.5. District and regional council advocacy and advice .....	21
	8.6. Iwi liaison .....	21
9.	FEES AND ALLOWANCES .....	22



## 1. INTRODUCTION

---

Section 6(O) of the Conservation Act requires conservation boards to provide the New Zealand Conservation Authority (**Authority**) with an annual report as soon as practical after 30 June each year. In recognition of this requirement the Nelson Marlborough Conservation Board (**Board**) submits this annual report.

Conservation boards are independent advisory bodies, established by statute. They represent the community and offer interaction between communities and the Department of Conservation (**Department**), within their area of jurisdiction.

Conservation board members are appointed by the Minister of Conservation under section 6(P) of the Conservation Act 1987 (**Act**). Board functions are outlined in section 6(M) and the powers, which enable the conservation boards to carry out those functions, are under 6(N) of the Act. The Board has several statutory roles under various Acts, including:

- the recommendation of the Nelson Marlborough Conservation Management Strategy (CMS) to the Authority for approval
- advising the Department and the Authority on how conservation management strategies and plans will be put into practice.
- reporting on the implementation of the CMS
- the recommendation of national park management plans to the Authority for approval
- advising the Department and Authority on conservation matters, and proposed changes to status of land of national and international significance
- liaising with the regional Fish and Game Council on conservation matters
- carrying out other powers delegated by the Minister of Conservation, the Conservation Act, or any other Act.

Conservation boards also have several functions under section 30 of the National Parks Act 1980. These functions include recommending the review or amendment of national park management plans and recommending approval of these plans by the Authority.

## 2. ROHE

---

The Nelson / Marlborough Conservation Board's area of jurisdiction covers the area of 3,964,158.66 hectares. This area covers all of Nelson and Marlborough, with oversight of the whole of Kahurangi National Park. This also includes Abel Tasman and Nelson Lakes National Parks, Mt Richmond Forest Park, Molesworth Recreation Reserve, and important nature reserves such as Takapourewa (Stephens Island) and Farewell Spit.

The area also extends out to the 12-nautical mile limit with respect to coastal and marine issues, and out to the 200-nautical mile limit with respect to protected species.

Public conservation land and waters make up 45.5% of all the Board's total district. This consists of:

- 1,470,202.67 hectares of Public Conservation Land
- 321,492.73 hectares of Sanctuaries to Protect Marine Mammals
- 14,377.90 hectares of Marine Reserves

These areas constitute approximately 12.5% of all public conservation areas in New Zealand.

### 2.1. Tangata whenua

The Board area includes the rohe of the eight iwi of Te Taihū - Te Ātiawa, Ngāti Rārua, Ngāti Koata, Ngāti Kuia, Rangitāne, Ngāti Toa Rangatira, Ngāti Apa ki te Rā Tō, and Ngāti Tama - and Ngāti Kuri and Ngāti Waewae (Rūnanga of Ngāi Tahu). There are 11 Marae within the Board area.

### 2.2. Conservation features of the area

The main features of Public Conservation Land and Waters within the Board's boundaries are:

- Abel Tasman National Park – 23,502.06 ha
- Kahurangi National Park – 516,846.85 ha
- Nelson Lakes National Park – 101,188.86 ha
- Ka Whata Tu o Rākohia Conservation Park – 87,877.84 ha
- Molesworth Recreation Reserve – 180,787 ha
- Mount Richmond Forest Park – 165,603.19 ha
- North West Nelson Forest Park – 32,604.54 ha
- 223 Scenic Reserves – 88,860.42 ha
- 11 Historic Reserves – 1,414.99 ha
- 66 Recreation Reserves – 180,067.48 ha
- 208 Stewardship Areas – 241,431.66 ha
- 234 Marginal Strips – 4,415.22 ha
- 18 Specially Protected Area – 6,156.79 ha
- 6 Marine Reserves – 14,377.90 ha
- 4 Sanctuaries to protect Marine Mammals – 321,492.73 ha.

There are about 750 heritage and cultural sites, both Māori and European, including archaeological sites, historic backcountry huts, a whaling station and cob cottages.

Species protection programmes in the area cover Hector's dolphin, tuatara, endemic frogs, Powelliphanta snails, great spotted kiwi, takahē, Hutton's shearwater, tītī/Hutton's shearwater, weka, kākā, black fronted tern and whio (blue duck) and include a 'mainland island' at Nelson Lakes, the Rotoiti Nature Recovery Project.

The Board's area also covers some of New Zealand's best-known and most-loved visitor sites, including Kaikōura Peninsula, Abel Tasman Coast Track, Heaphy Track, Wharariki Beach and Queen Charlotte Track. There are over 300 other walks and tracks totalling more than 1,950 kilometres.

### 2.3. Conservation issues in the area

The issues that are of key interest to the Board include:

- Ecosystem management and management of plant and animal species
- Management of recreational facilities
- Management of historic sites
- Concession activities including those relating to recreation and tourism activities, grazing, industrial use, baches, filming, gravel extraction.
- Marine protection

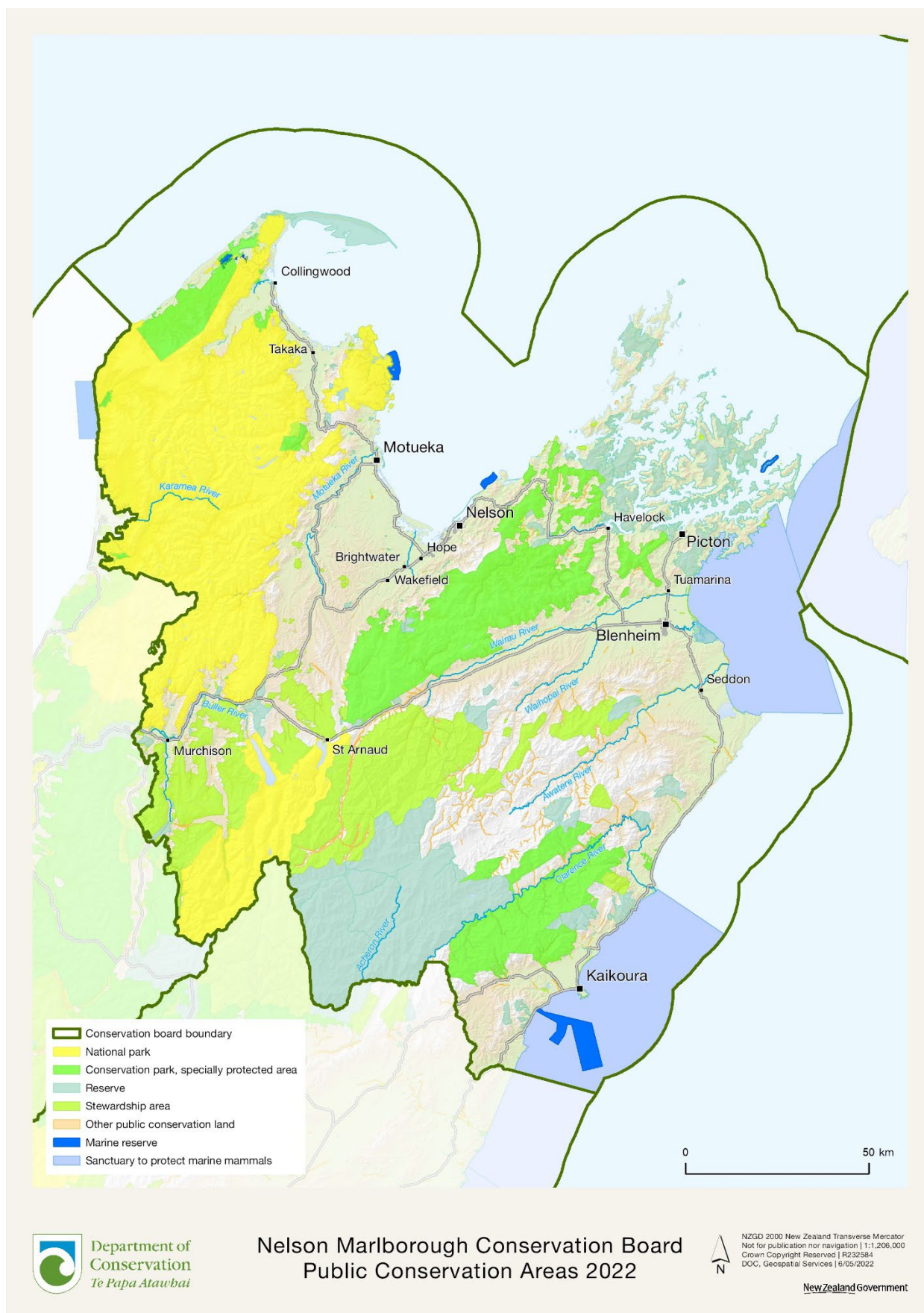


Figure 1: The Nelson Marlborough Conservation Board area of jurisdiction mostly aligns with the DOC Northern South Island region, above, with the addition of policy and planning responsibility for all Kahurangi National Park.

### 3. FUNCTIONS

---

#### 3.1. Board functions under section 6M of the Conservation Act 1987

The functions of the Board are:

- 1) To recommend the approval by the Authority of conservation management strategies, and the review and amendment of such strategies, under the relevant enactments
- 2) To approve conservation management plans, and the review and amendment of such plans, under the relevant enactments
- 3) To advise the Authority and the Director-General on the implementation of conservation management strategies and conservation management plans for the area within the jurisdiction of the Board
- 4) To advise the Authority or the Director-General on any proposed change of status or classification of any area of national or international importance
- 5) To advise the Authority or the Director-General on any other conservation matter relating to any area within the jurisdiction of the Board
- 6) To liaise with any Fish and Game Council on matters within the jurisdiction of the Board
- 7) To exercise such powers and functions as may be delegated to it by the Minister under this Act or any other Act.

#### 3.2. Board powers under section 6N of the Conservation Act 1987

- 1) Every conservation board shall have all such powers as are reasonably necessary or expedient to enable it to carry out its functions.
- 2) Without limiting the generality of subsection (1), each conservation board may –
  - i. Advocate its interests at any public forum or in any statutory planning process; and
  - ii. Appoint committees of members and other suitable persons, and delegate to them functions and powers.
- 3) The power conferred by subsection (2)(a) shall include the right to appear before courts and tribunals in New Zealand and be heard on matters affecting or relating to the Board's functions.

#### 3.3. Board functions under section 30 of the National Parks Act 1980

- 1) to recommend management plans, and the review or amendment of such plans, for parks within the jurisdiction of the Board in accordance with sections 45 to 47:
- 2) to consider and determine priorities for the implementation of management plans for national parks:
- 3) to make recommendations to the Minister for the appointment of honorary rangers under section 40:
- 4) to review and report to the Director-General or the Authority, as appropriate, on the effectiveness of the administration of the general policies for national parks within the jurisdiction of the Board:
- 5) to give advice to the Director-General or the Authority—
  - i. on the interpretation of any management plan for a park; and

- ii. on any proposal for the addition of land to any national park or the establishment of a new national park; and
- iii. on any other matter relating to any national park, within the jurisdiction of the Board.

#### 4. MEMBERSHIP

The Minister of Conservation appoints Board members under section 6P of the Conservation Act 1987. The process of appointment ensures that a range of perspectives, life experiences, and knowledge contribute to the advice provided and decisions made by the Board.

Under Section 6P of the Conservation Act, a Board whose area of jurisdiction is partly within the Ngāi Tahu claim area must consist of no more than 12 persons, with at least one person appointed on the nomination of Te Rūnanga o Ngāi Tahu. The Nelson Marlborough Conservation Board currently has two members who were appointed on the nomination of Te Rūnanga o Ngāi Tahu.

Board members are appointed for three-year terms unless they are appointed in replacement of a prior member's term and may be re-appointed. There were eleven Board members for the reporting year. Aneika Young was re-elected Chairperson and Nick Eade was re-confirmed as Deputy Chairperson. Three new Board members were appointed: Brian McGurk replaced Raymond Smith with a term ending 30 June 2025; Jen Skilton and Serean Adams were appointed for three-year terms ending 30 June 2026.

Board Member	Area	Term start	Term end
<b>Aneika Young (Chair)</b>	Nelson	01/07/2021	30/06/2024
<b>Brian McGurk</b>	Nelson	01/07/2023	30/06/2025
<b>Clint McConchie</b> (Ngāi Tahu nominee)	Kaikōura	01/07/2021	30/06/2024
<b>Harvey Ruru</b>	Nelson	01/07/2021	30/06/2024
<b>Ian Alach</b>	Takaka	01/07/2021	30/06/2024
<b>Dr Jen Skilton</b>	Nelson	01/07/2023	30/06/2026
<b>Lorraine Hawke</b> (Ngāi Tahu nominee)	Kaikōura	01/07/2022	30/06/2025
<b>Nick Eade (Co-Chair)</b>	Pelorus Sound	01/07/2023	30/06/2026
<b>Rima Piggott</b>	Motueka	01/07/2022	30/06/2025
<b>Scott Burnett</b>	Nelson	01/07/2022	30/06/2025
<b>Dr Serean Adams</b>	Nelson	01/07/2023	30/06/2026



## Members' profiles



**Aneika Aranga Young** has whakapapa to Ngāti Rārua and Te Ātiawa ki Motueka, Ngāti Ruanui and Ngāti Koroki Kahukura. She has an MSc in Environmental Studies and Māori Resource Management. Currently the Poutohutohu Ao Māori for The Nature Conservancy (TNC) NZ and Kotahitanga mō te Taiao Alliance Project. Her former roles included Māori Cultural Advisor and Environmental Scientist at the Cawthron Institute and Poutohutohu Taiao at Te Rūnanga o Ngāti Rārua. Aneika, is now a Board member for Te Rūnanga o Ngāti Rārua, Director for Project Janszoon, Board member for the Kaiteretere Recreation Board, Iwi rep for NRSBU and a Trustee on the Te Āwhina Marae Board.



**Brian McGurk** has strong governance and planning experience after three terms as a Nelson City Councillor. He is a qualified RMA Commissioner. He holds strong community connections and was involved in the governance of a number of the Council's biodiversity projects.



**Clint McConchie** is of Ngāi Tahu and Ngāti Kurī descent and was nominated by Te Rūnanga o Ngāi Tahu. He is a Natural Resource Manager and has formerly had roles in farm management. He brings experience in, and knowledge of, RMA, land and environmental management, sustainable practices, and biodiversity to the board.



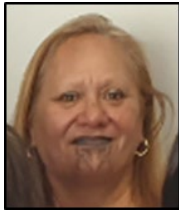
**Archdeacon Emeritus TeHawe (Harvey) Ruru** QSM of Nelson is affiliated to Te Ātiawa, Ngāti Tama, Ngāti Mutunga, Ngāti Maru, Ngāti Toa Rangatira, Kati Mamoe and Moriori. Harvey is a Trustee of Te Ātiawa o te Waka a Māui Trust and has had a long involvement as a claim's negotiator in the Waitangi Tribunal Claims settlement process. In 2016 he retired after 14 years as NZ Police Iwi Liaison Officer and Coordinator. Harvey is also an Anglican priest. He has wide ranging governance experience.



**Ian Alach** is a self-employed small farmer and conservation consultant. He has extensive experience supervising contractor projects on conservation land. He has been carrying out wilding conifer control voluntarily on Molesworth and at Beeby's Knob in Mt Richmond Forest Park for many years. He is a member of the Golden Bay Alpine Tramping Club, secretary of the Takaka Dog Trial Club and co-president of the Takaka Badminton Club.



**Dr Jennifer (Jen) Skilton** (Te Ātiawa) has a PhD in ecology, with specific expertise in aquatic and restoration ecology. She works across the Nelson, Tasman, and Marlborough regions as Pou Taiao for Ngāti Apa ki te Rā Tō. Jen is driven by the desire to implement effective management strategies to sustain and protect New Zealand's natural assets for future generations.



**Lorraine Hawke** (of Ngāi Tahu o Ngāti Kurī me Ngāi Tuahuriri, Ngāti Waewae, Ngāti Irakehu, Ngāti Mamoe me Waitaha, Rangitāne) is nominated by Te Rūnanga o Ngāi Tahu. Lorraine is a former Māori Response Counsellor with a strong interest in Māori workforce development and Māori health. Lorraine has a background in governance, policy, and whānau development. Her interests are varied; however she is particularly drawn to kaupapa relating to cultural creative arts, rongoā, writing and composition.



**Nick Eade** of Marlborough Sounds currently combines guiding work in Taranui/Queen Charlotte Sound, with work on several conservation and restoration projects. She previously worked as an Environmental Scientist with a focus on biodiversity and land management. She has significant experience in consultation, advocacy, research and publication, and cultural awareness. She has a Masters in Resource Management.



**Rima Piggott** of Motueka is affiliated to Ngāti Rārua, Te Ātiawa, Ngāti Toa Rangitira, Ngāti Ranginui, Ngāiterangi and Ngāti Tūwharetoa. Rima is a home health support worker and has a certificate in Horticultural Management. Rima has broad community involvement and is a Trustee for Te Rūnanga o Ngāti Rārua and a member of the Manawhenua ki Mohua Trust. She enjoys tramping, fishing, hunting, diving, gardening and gathering ai moana.



**Scott Burnett** of Nelson has a business and governance background related to volunteering and conservation. He has a Masters degree focused on the relationships of eco-sanctuaries with Māori. Scott remains active and committed to conservation efforts in the Marlborough Sounds.



**Dr Serean Adams** brings marine science and aquaculture experience, with a PhD in Marine Science and experience working with iwi on aquaculture matters. Dr Adams has led research programmes, strategy and business development for Cawthron Institute. She was previously involved with the DOC Kakapo Recovery Programme carrying out cryopreservation research.

## 5. MEETINGS AND FIELD TRIPS

The Board held six meetings during the reporting period. Venues for the meetings vary each year to ensure a wide coverage and enable members of the public in the region to attend meetings and access the Board.

Meeting date	Location/Venue	Field Trip
8th August 2023	Motueka	
4 <sup>th</sup> & 5th October 2023	Picton/ Waikawa	Field Trip to Victoria Domain, Momorangi Bay and Outward Bound at Anakiwa
30 <sup>th</sup> November 2023	Rotoiti – St Arnaud	
2 <sup>nd</sup> February 2023	Whakatū – Nelson DOC Office	
18 <sup>th</sup> & 19 <sup>th</sup> March 2023	Onetahaua Marae, Mohua – Golden Bay	Field trip to Anaweka Waka, Te Waikoropupū Springs and Pūponga Farm Park
6 <sup>th</sup> June 2023	Te Hora Marae, Canvastown	

### 5.1. Agendas

The Operations Director provides a strategic update at each meeting. District updates are provided by Operations Managers at most meetings.

The Board receives regular reports from the Department at each meeting, including on operational work in the region, statutory management planning and RMA advocacy work.

Te Ao Māori is a focus for the Board and meetings are held at marae when possible. Tangata whenua iwi are invited to meetings to talk to the Board.

The agendas and minutes from all Board meetings can be found on the Board's webpage: <https://www.doc.govt.nz/about-us/statutory-and-advisory-bodies/conservation-boards/nelson-marlborough/>

### 5.2. Field trips and site inspections

Field trips are an excellent opportunity for Board members to become more aware of and understand conservation issues within their region.

October 5<sup>th</sup>, 2023, the Board visited the trapping lines in the Victoria Domain managed by Picton Dawn Chorus. Lee Crosswell spoke to the Board on site of the progress made by a community of volunteers. At the lookout above Kaipupu Sanctuary the Board saw the impressive fence line around the sanctuary. The next stop was a visit to Momorangi Campground for a discussion with DOC staff about managing the campground. The last stop on the journey home was at Anakiwa for an overview of the different courses provided and conservation initiatives of Outward Bound.





*Nelson Marlborough Conservation Board members and DOC staff at Te Waikoropūpū Springs and Cape Farewell. PHOTO: M Reihana*

Golden Bay's trip in March 2024 consisted of a very special visit to see the Anaweka waka that had been found on the West Coast near the Anaweka river. Since its discovery it has been stored in a secure humidity-controlled building and monitored by the Auckland Museum. The Board carried on to Waikoropūpū Springs to learn of its history and progress in its protection. Iwi members shared pūrakau and tikanga significant to local hapū. The Board carried on to Farewell Spit and visited an old Pā site which is now vested in iwi as Historic Reserve. The Board talked to the farm manager of Pūponga Farm Park and then visited Health Post Nature Trust's eco-sanctuary at Cape Farewell.

### 5.3. Members' attendance

Board Member	Meetings (total #)	Fieldtrips (total #)
Aneika Young	5	1
Brian McGurk	6	2
Clint McConchie	4	1
Harvey Ruru	4	0
Ian Alach	6	2
Jen Skilton	6	2
Lorraine Hawke	2	0
Nick Eade	6	2
Rima Piggott	6	2
Scott Burnett	6	2
Serean Adams	4	1

## 6. MAHI

---

### 6.1. Committees

The Conservation Act 1987 enables the Board to establish committees to carry out functions or tasks delegated by the Board. Committees that were active during the reporting period, and members involved in those committees included:

**Permissions Committee** – To advise the Department on policy matters associated with concessions and enable feedback on concession applications within the limited timeframes allowed for Board input. The committee is only formally involved in the concessions process when one of the agreed trigger points is activated, most often being a new type of activity.

- Members: Ian Alach (convenor), Brian McGurk, Clint McConchie

**Iwi Komiti** – To progress and advise on iwi matters and/or relationships

- Members: Aneika Young (convenor), Clint McConchie, Rima Piggott, Harvey Ruru, Lorraine Hawke and Jen Skilton

**Stewardship Land Reclassification Committee** – To advise the Department on matters relating to stewardship land reclassification

- Members: Harvey Ruru, Aneika Young, Ian Alach

**Molesworth Management Plan Review Committee** – To advise the Department on matters relating to the Molesworth Management plan review and provide input into the development of the draft plan.

- Members: Scott Burnett, Nick Eade, Ian Alach

**Health, Safety and Wellbeing Committee** – To monitor and review health and safety matters including the Board's Health and Safety Policy

- Members: Harvey Ruru, Serean Adams

### 6.2. Representatives and Board appointees

The Board is represented on two entities in the region:

- Molesworth Steering Committee – Nick Eade (Ministerial appointment)
- Tasman Environmental Trust – Scott Burnett

### 6.3. Liaison roles

Sally Gepp is the NZCA liaison person for the Board. Copies of all agendas and minutes are exchanged between the Board and NZCA. Sally regularly attends Board meetings and updates the Board on the NZCA's work.

Board members were also appointed to liaise with adjoining conservation boards. The Board also exchanges copies of all agendas and minutes with these neighbouring boards.

- West Coast Tai Poutini Conservation Board liaison – Harvey Ruru/Brian McGurk
- Canterbury Aoraki Conservation Board liaison – Scott Burnett

Harvey Ruru attended the August 2023 meeting of the West Coast Tai Poutini Conservation Board.

Chair Aneika Young, Brian McGurk and Scott Burnett attended the joint meeting between Canterbury Aoraki Conservation Board and West Coast Tai Poutini Conservation Board

at Lake Brunner in February as this was a valuable opportunity to connect strategically with both boards.

#### **6.4. Other events and training**

Board Chairs' conference – Aneika Young and Nick Eade attended the Chairs Conference in August 2023 held at Waitangi as Co-Chairs.

Board member Scott Burnett attended the department's Te Pukenga Atawhai at Te Awhina Marae in May.

## **7. STATUTORY ACTIVITY**

---

### **7.1. Annual Work Plan**

After receiving its Letter of Expectation from the Minister of Conservation, the Board sets out its work plan for the upcoming year. An end-of-year report on the Work Plan is provided to the NZCA.

### **7.2. Nelson Marlborough Conservation Management Strategy (CMS)**

The Board continued to be disappointed and frustrated that the CMS review has not been initiated. The CMS is critical to strategically guiding the work of the Department in the region and the current CMS, which was approved in 1996, is long overdue for review.

Board members Scott Burnett and Ian Alach provided advice to the department on their review of the CMS implementation report presented by DOC last year. They noted the report records a significant amount of work carried out by Department of Conservation staff and acknowledged the hard work and the dedication of DOC staff over the extended life of this CMS.

The CMS is 27 years old, and it is now badly outdated and in urgent need of review, particularly given:

- The Departments' deepening relationships with Iwi,
- Increasing knowledge of ecosystems, species, and pressures they face,
- A changed legislative environment from 27 years ago,
- Increasing community involvement in conservation and restoration,
- Overall declining ecosystem and species trends due to browsing, predation, invasive species, pollution, sedimentation, etc.
- And critically, the increasing impact of climate change and the need to take adaptation actions now in anticipation of climatic changes, increased intensity weather events, and sea level rise.

A few things stood out:

- There has been good progress made on recreation facility provision and upkeep.
- There has been a lack of progress on many heritage assessment actions.
- There has been a lack of progress on access issues. Many of the access issues identified as priorities in 1996, remain so today. Should there be a renewed focus upon resolving some of these?

- Over much of the term of this CMS, ungulate management has been under-prioritised and there is a need today for renewed focus on many of the ungulate management priority actions.
- The marine environment has received comparatively little attention, and the 10% marine protected area goal is a long way from being achieved.

### 7.3. Management Plans

#### **Rangitahi/Molesworth Recreation Reserve**

The Board has been kept informed about the work DOC and Ngāti Kurī are doing to review the management plan for Molesworth Recreation Reserve. The Board established a committee to provide the Board's input into this review. The committee has had regular meetings with the Department throughout the year to provide input into the draft plan. The Board hopes to see the draft plan publicly notified next year.

#### **Implementation monitoring**

The Board considered the implementation report on the Molesworth Recreation Reserve Conservation Management Plan in March. Feedback was provided that protection of aquatic life seemed light and heritage assets did not seem to be getting the required focus. Board member Ian Alach said through his wilding conifer control work in Molesworth over the last 20 years he has seen the re-cloaking of Papatūānuku in Molesworth; it is hard to notice the change annually but over time you can see the progress.

## 8. ADVICE AND ADVOCACY

---

The Board provides advice and advocacy within the region and nationally.

### 8.1. Advice to the Department

The Board receives operational updates from the Department at Board meetings as well as a strategic overview of work in the region. There is good discussion at each meeting in response to these updates.

The Board was asked to provide advice on a proposal to prohibit freedom camping on conservation land (classified as stewardship land) north of the Wairau River mouth to Rarangi. The Board supported the proposal.

The Board has a Permissions Committee which provided advice on two applications, baches on the Boulder Bank near Nelson and an application from Rangitāne o Wairau for eel harvest from Lake Rotoiti. The committee reviewed the Board's triggers for consultation on permission applications in June.

In November the Board had a discussion with departmental national advisers working on climate change and DOC's climate change adaptation action plan. Board members discussed vulnerable sites in the region such as the Abel Tasman coastline and the likelihood of having to move some huts and camps in the future. There was also discussion about emission reduction projects underway within the region.

### 8.2. Community advocacy and involvement

Meetings were held in different parts of the Nelson Marlborough region and opportunities for the public to attend Board meetings were advertised.

Individual Board members are involved in community groups and spoke to the Board about their work. Scott Burnett is the Board's representative on Tasman Environmental Trust and updates the Board at each meeting on the Trust's work.

Representatives of several community groups talked to the Board throughout the year.

In August Sky Davies from Tasman Environmental Trust and Brian Alder from Pest Free Onetahua talked about the work of the Trust which supported 30 projects across the region, including Pest Free Onetahua. The Board discussed the proposed predator free fence at Onetahua/Farewell Spit and the project's aim to rid the protected zone of pigs, possums, rats and stoats.

In October the Board heard from Anna Polson and Zoey Aitchison of Kaipupu Sanctuary and Picton Dawn Chorus. The main challenges facing the groups were funding and recruiting new members to volunteer.

Marlborough District Council staff spoke to the Board about the East Coast Beach Vehicle Bylaw which was implemented to manage the effects of vehicles on the coast since earthquake uplift in 2016. Council's focus is on implementation and monitoring, with an initial emphasis on education before undertaking more formal enforcement.

In November, the Board heard from Ngāti Apa about their structure and work, and an update on the annual tuna monitoring carried out by Ngāti Apa at Lake Rotorua in Nelson Lakes National Park.

In February the Board heard about Kotahitanga mō te Taiao's work in Te Taihū. The objective is to maximise impact through ensuring investment is at the right level and through collaboration with funders and research agencies.

Graeme Ferrier, President of the Nelson Tramping Club, raised concerns about the closure of access easements into Mount Richmond Forest Park by forestry company OneFortyOne. The Board has asked the department for information so that it can better understand the situation.

The Board appreciates the efforts of the public and community groups to attend meetings and always responds by letter with a response to questions asked or concerns raised.

### **8.3. Community visibility**

The Board maintains a presence on the Department's website and via the quarterly Conservation Board Newsletter.

Individual board members attended regional Biodiversity Forums and a range of events including bird translocations and are active in range of community trapping, weeding and planting activities.

### **8.4. Other advocacy and advice**

The Board submitted on the Fast Track Approvals Bill in April and Chair Aneika Young presented the Board's submission to the Select Committee in May.

The Board submitted on the Resource Management (Extended Duration of Coastal Permits for Marine Farms) Amendment Bill in June and Nick Eade presented the Board's submission to the Select Committee.

### **8.5. Iwi liaison**

The Iwi Komiti takes the lead on developing the cultural capability of Board members and upskilling Board members in Te Reo and tikanga. There are iwi representatives on all Board committees.

A focus on Te Ao Māori is integral to Board meetings and the Board's Tikanga mō te Poari.

The Board considers iwi perspectives in its discussion and factors iwi views into its advice.

## 9. FEES AND ALLOWANCES

---

Fees and allowances are paid in accordance with the Fees and Travelling Allowances Act 1951. The chairperson receives a daily meeting fee of \$330, and other Authority members receive a daily meeting fee of \$250.

Conservation Board of Nelson Marlborough

This report is presented to the New Zealand Conservation Authority as required by the Conservation Act 1987 and distributed to interested parties. Members of the public are welcome to attend conservation board meetings.

If you would like more information on the Nelson Marlborough Conservation Board please see the website [www.conservationboards.org.nz](http://www.conservationboards.org.nz), or e-mail [nelsonmarlboroughboard@doc.govt.nz](mailto:nelsonmarlboroughboard@doc.govt.nz)