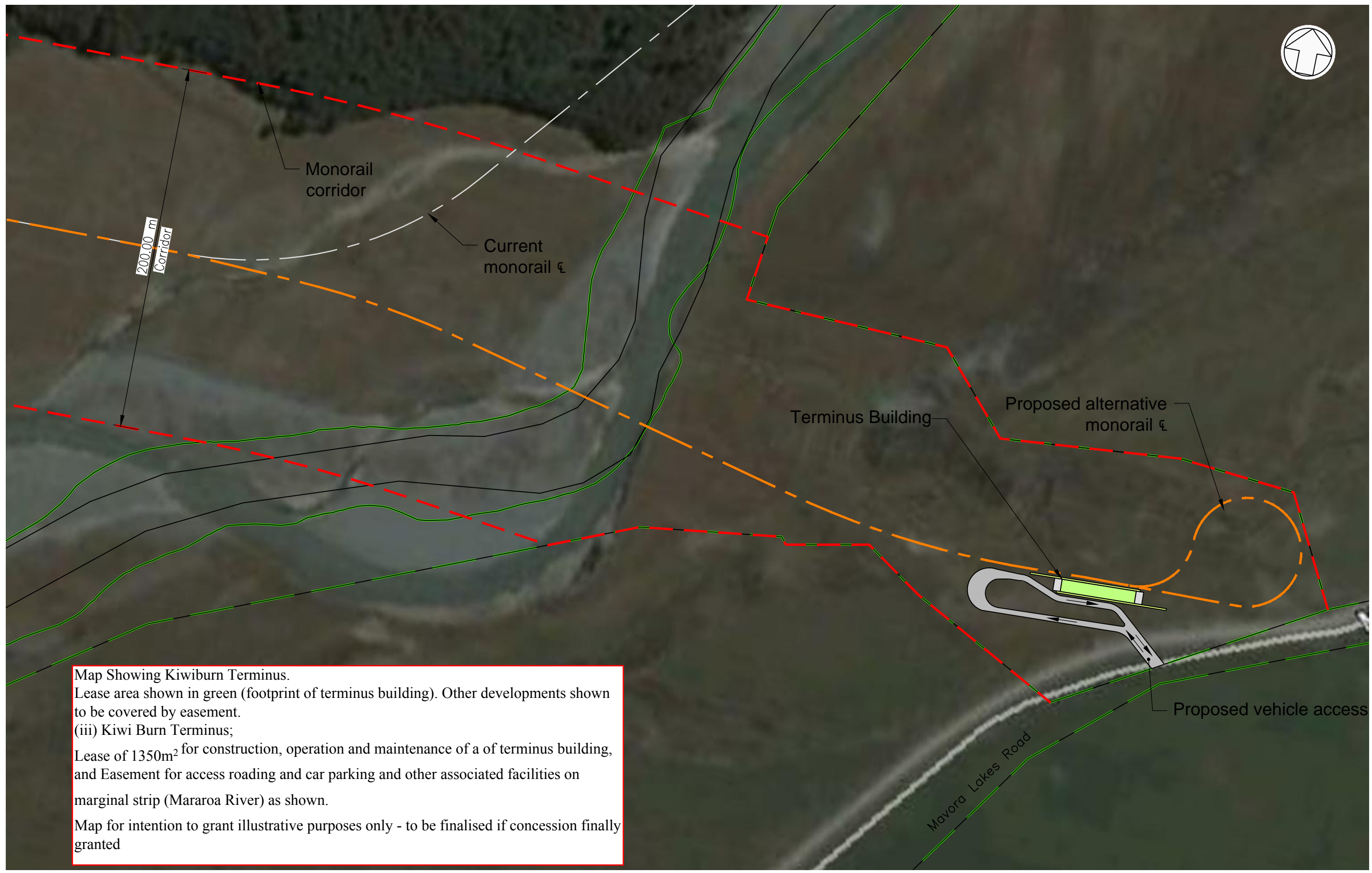


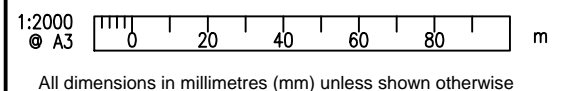


200 mm  
100  
50  
10 mm  
0



Map Showing Kiwiburn Terminus.  
 Lease area shown in green (footprint of terminus building). Other developments shown to be covered by easement.  
 (iii) Kiwi Burn Terminus;  
 Lease of 1350m<sup>2</sup> for construction, operation and maintenance of a of terminus building, and Easement for access roading and car parking and other associated facilities on marginal strip (Mararoa River) as shown.  
 Map for intention to grant illustrative purposes only - to be finalised if concession finally granted

Contains data sourced from Land Information New Zealand. Land Information New Zealand gives no warranty in relation to the data (including accuracy, reliability, completeness or suitability) and accepts no liability (including, without limitation, liability in negligence) for any loss, damage or costs relating to any use of the data. Crown Copyright Reserved.



			BY	CHECKED	DATE
			RHL	WP	22/12/2010
			CY	WP	22/12/2010
			APPROVED		
			W PARKER		27/01/11
R2	Access Road & Rail Alignment Amended	WP	27/01/11		
R1	Access Road Amended	JD	23/12/10		
	AMENDMENT	APP'D	DATE		

*This drawing and its contents are the property of Opus International Consultants Limited. Any unauthorised employment or reproduction, in full or in part, is forbidden.*

**Riverstone Holdings Ltd**

**Christchurch Civil Engineering**  
 PO Box 1482  
 Christchurch, New Zealand  
 Tel: +64 3 363 5400  
 Fax: +64 3 365 7858

TITLE		FILE	
FIORDLAND LINK EXPERIENCE MONORAIL		6DP038.00	
ALTERNATIVE KIWIBURN TERMINUS INDICATIVE SITE PLAN			
STATUS	PRELIMINARY	FEATURE IDENTIFIER	CODE
SCALE	PLOT DATE	SHEET	REVISION
1:2000 @ A3	27/01/11 @ 12:18	7/5460/1	5604 50 R2