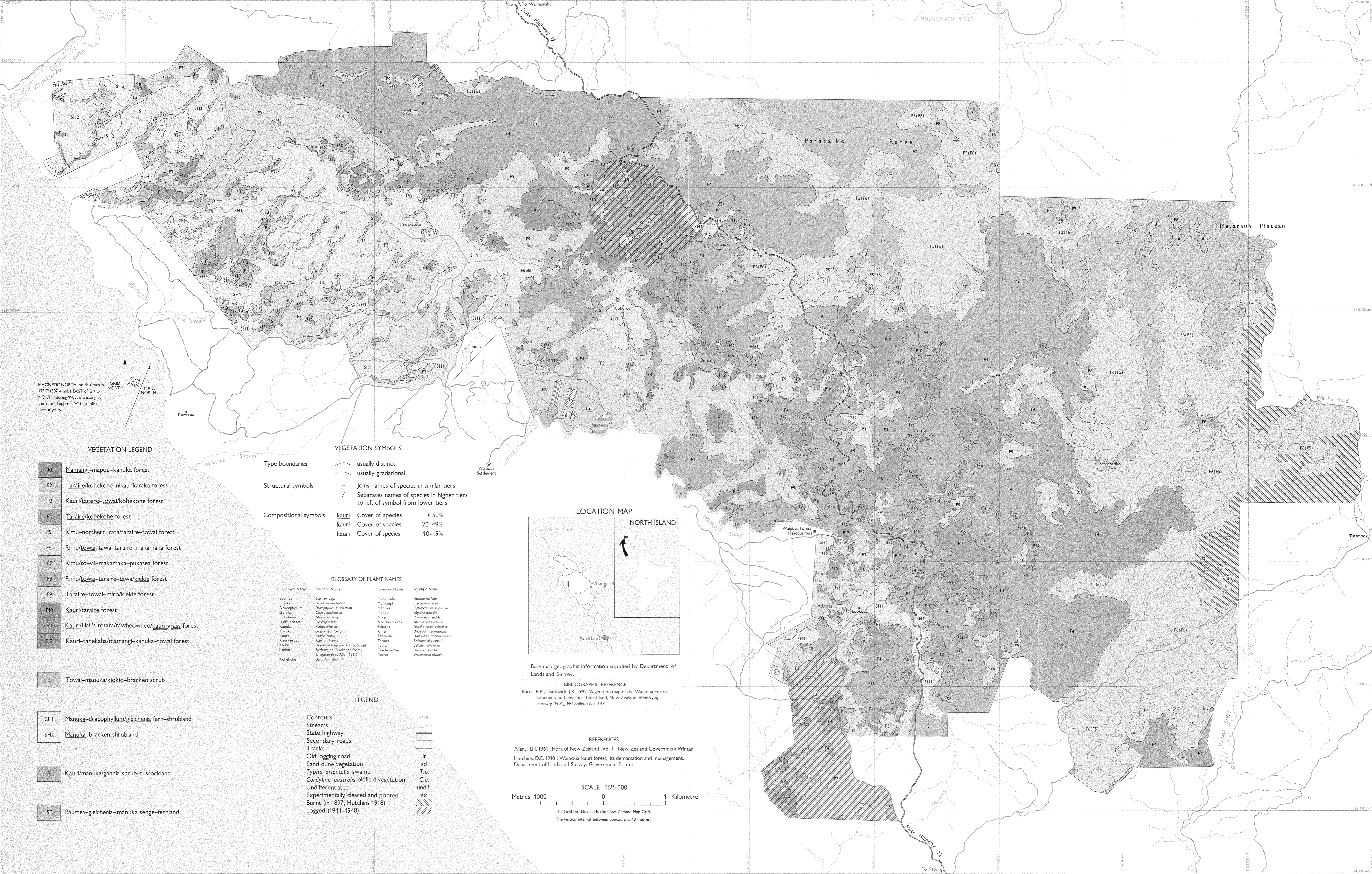


VEGETATION MAP OF THE WAIPOUA FOREST SANCTUARY AND ENVIRONS



MAGNETIC NORTH on this map is 17°17' (307.4 miles) EAST of GRID NORTH during 1988, increasing at the rate of approx. 1/6" (5 miles) over 6 years.

VEGETATION LEGEND

- F1 Mamangi-mapou-kanuka forest
- F2 Taraire/kohekohe-nikau-kanuka forest
- F3 Kauri/taraire-towai/kohekohe forest
- F4 Taraire/kohekohe forest
- F5 Rimu-northern rata/taraire-towai forest
- F6 Rimu/towai-tawa-taraire-makamaka forest
- F7 Rimu/towai-makamaka-pukatea forest
- F8 Rimu/towai-taraire-tawa/kielie forest
- F9 Taraire-towai-miro/kielie forest
- F10 Kauri/taraire forest
- F11 Kauri/Hall's totara/tawheowheo/kauri grass forest
- F12 Kauri-tanekaha/mamangi-kanuka-towai forest

- S Towai-manuka/kielie-bracken scrub

- SH1 Manuka-dracophyllum/gleichenia fern-shrubland
- SH2 Manuka-bracken shrubland

- T Kauri/manuka/gahnia shrub-tussockland

- SF Baumea-gleichenia-manuka sedge-fernlund

VEGETATION SYMBOLS

- Type boundaries
- usually distinct
 - - usually gradational
- Structural symbols
- Joins names of species in similar tiers
 - / Separates names of species in higher tiers to left of symbol from lower tiers
- Compositional symbols
- kauri Cover of species ≥ 50%
 - kauri Cover of species 20-49%
 - kauri Cover of species 10-19%

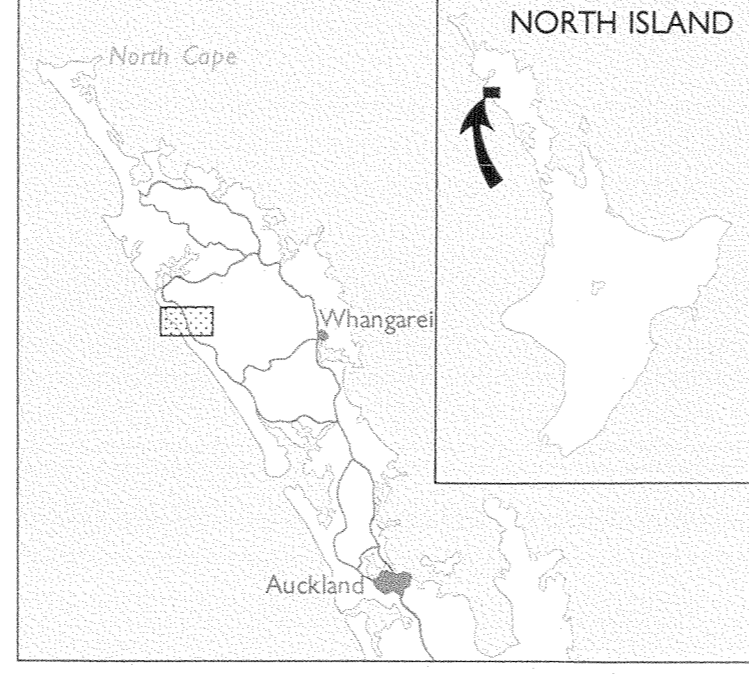
GLOSSARY OF PLANT NAMES

Common Name	Scientific Name	Common Name	Scientific Name
Baumea	Baumea spp.	Makamaka	Adiantum repens
Bracken	Pteridium esculentum	Mamangi	Coprosma orbosa
Dracophyllum	Dracophyllum lescurianum	Manuka	Leptospermum scoparium
Gleichenia	Gleichenia antarctica	Mapou	Mitrasacme australis
Gleichenia	Gleichenia dicarpa	Nikau	Rhopileta sapida
Hall's totara	Podocarpus hallii	Northern rata	Metrosideros robusta
Kanuka	Canax montana	Pukatea	Larrea new-zealandae
Karakia	Corynocarpus laevis	Rimu	Dryoderm aprinum
Kauri	Agathis australis	Tanekaha	Phyllocladus trichomanoides
Kauri grass	Astilbe crinita	Taraire	Betulaledia tarairi
Kielie	Fragaria basoniana subsp. baskinii	Tawa	Bellismedia tawa
Kiokio	Blechnum sp. (Blackstone form)	Tawheowheo	Quercus tarairi
Kohekohe	B. apense sensu Allan (1961)	Towai	Weinmannia silvatica
	Dryasium spec. 1/16		

LEGEND

- Contours
- 240
- Streams
-
- State highway
-
- Secondary roads
-
- Tracks
-
- Old logging road
-
- Sand dune vegetation
-
- Typha orientalis swamp
-
- Cordyline australis oldfield vegetation
-
- Undifferentiated
-
- Experimentally cleared and planted
-
- Burnt (in 1897, Hutchins 1918)
-
- Logged (1944-1948)
-

LOCATION MAP



Base map geographic information supplied by Department of Lands and Survey.

BIBLIOGRAPHIC REFERENCE

Burns, B.R.; Leathwick, J.R. 1992: Vegetation map of the Waipoua Forest sanctuary and environs, Northland, New Zealand. Ministry of Forestry (N.Z.), FRI Bulletin No. 143.

REFERENCES

Allan, H.H. 1961: Flora of New Zealand. Vol. I. New Zealand Government Printer
 Hutchins, D.E. 1918: Waipoua kauri forest, its demarcation and management. Department of Lands and Survey, Government Printer.

SCALE 1:25 000

Metres 1000 0 1 Kilometre

The Grid on this map is the New Zealand Map Grid. The vertical interval between contours is 40 metres.