



PREDATOR FREE 2050
TUIA TE TAIAO

Me auaha mō tētahi ao kaikonihi-kore mō Aotearoa New Zealand

Rautaki Kaikonihi-Kore 2050 (2026–2030)



Te matakite mō Kaikonihi-Kore 2050

Whakahokia mai ngā reo karanga

o te pepeke,
o te pekapeka,
o te ngārara
o te manu
ki ngā ngahere,
ki ngā whenua pāmu,
ki ngā tāone iti,
ki ngā tāone nui me
ngā takutai.

Te uwhi: Te whakanoho mai i tētahi pūrere urutau tūtei ki tētahi kāmera ara hikoi i Mou Tapu, i Wānaka. *Whakaahua: Blake Hornblow*
Whārangi kiko o roto: Te mahi haepapa i Maunga Te Kinga, hei wāhanga o te kaupapa Predator Free Te Kinga. *Whakaahua: Shelley Crawford*

E noho pūmau ana te manatārua o ngā atahanga katoa ki te Papa Atawhai, hāunga ērā he rerekē te kōrero i te taha.

Me auaha mō tētahi ao kaikonihī-kore mō Aotearoa New Zealand: Rautaki Kaikonihī-Kore 2050 (2026–2030)

Manatārua Karauna © Māehe 2026

ISBN 978-1-0671131-6-2 (tuihono)

He mea whakaputa nā:

Te Papa Atawhai Department of Conservation
Pouaka Poutāpeta 10420, Te Whanganui-a-Tara 6140
Aotearoa

Te takatā me te hoahoa:

Te Rōpū Ratonga Auaha, Creative Services

Tauākī tūmataiti

E herea ana ngā tāpaetanga katoa i raro i Te Ture mō ngā Mōhiotanga Whai Mana 1982, ā, ka taea te whakawātea ki te ao, ki te tonoa mai i raro i taua Ture. Mō ētahi atu kōrero, me āta titiro ki te tauākī tūmataiti o Te Papa Atawhai (doc.govt.nz/footer-links/privacy-and-security).

Whakakāhoretanga

Ahakoia i mahi nui mātou kia pono ngā mōhiotanga i tēnei whakaputanga, kāore Te Papa Atawhai e noho haepapa ahakoia pēhea, kāore hoki e noho nama mō tētahi hē meka, hapa rānei, whakamārama tikanga rānei, whakaaro whaiaro rānei ka noho i roto, waihoki ngā tūponotanga ka hua i muri i ngā whakatau i takea mai i ēnei mōhiotanga.

Ka uru ki tēnei pūrongo ētahi māramatanga mai i tētahi whakaaro tūmatanui i huaina i te whakamahinga o Microsoft Copilot 365, tētahi taputapu hanga kōrero atamai hangahanga. Ka pānuitia e mātou ngā tāpaetanga ahurei katoa, i tohungia e mātou ngā tākupu e pā ana ki ngā tāhuhu i roto, i tautohu hoki i ngā māramatanga taketake i runga anō i te toro whakaaro ki te iwi, ā, i whakamahia te Copilot hei tuhi i ētahi whakarāpopototanga poto. I āta arotakea ngā kiko nā te atamai hangahanga i hua e mātou, me te manatoko mai a te rōpū nāna te rautaki i whakatakoto.



He mea raihana ēnei mahi i raro i te Raihana ā-ao Creative Commons Attribution 4.0. Hei tiro ki tētahi tārua o tēnei raihana peka atu ki creativecommons.org/licenses/by/4.0.



Ngā kiko

Te kupu takamua a te Minita	6
Kupu whakataki me te horopaki	9
Te tū o te kaupapa i tēnei wā	12
Te whakahāngaitanga ki <i>Te Mana o te Taiao – Aotearoa New Zealand Biodiversity Strategy 2020</i>	14
Te hira o te ārai kaikonihī	15
Ngā pānga o ngā ara ārai kaikonihī ki ngā momo koiōra māori me te taiao	16
Mā tini, mā mano hei kawē i Kaikonihī-Kore 2050	18
Ngā tikanga mahi	19
Rautaki	21
Ko ngā painga e tūmanakotia ana mō Kaikonihī-Kore 2050 me te hāngaitanga ANZBS	22
Ngā ekenga taumata o mua (2016-2025)	24
Te rautaki o nāianei (2026-2030)	27
Te ara ki tētahi Aotearoa kaikonihī-kore (2030-2050)	32
Piri mai ki a mātou kia kaikonihī-kore a Aotearoa	36
Tāpiritanga	38
Tāpiritanga 1: Kuputaka	38
Tāpiritanga 2: Rārangi momo ūnga	39
Tāpiritanga 3: Ngā ngeru mohoao	40
Tāpiritanga 4: Me mōhio ki te rerekētanga	41
Tāpiritanga 5: Rārangi rangahau	42

Te kupu takamua a te Minita

Kua uaua te noho o te tini o ngā momo kararehe, manu māori ahurei e kitea ana i Aotearoa. I takea mai rātou i i tētahi mekamoutere taratahi i roto i ngā mano tau tini ngerongerō o mua, ā, ko ngā kaikonihī aruaru i a rātou i whai i a rātou mā te koi o ō rātou whatu, ā, ko te whakautu tauārai ki aua kaikonihī he tū mārika, he whakatūmatapō hoki me ngā wawao pērā. He tino roa te noho o ēnei momo koiōra i te ao nei, he pōrori te tupu, ā, he parirau kore ētahi – nā ēnei mea katoa i te tino whakaraerae tō rātou noho i te kawenga mai o ngā kaikonihī hou e te tangata. Nā konei kua tino heke te taupori o ēnei momo.

Kei Aotearoa nei ētahi o ngā pāpātanga korehāhā tiketike rawa huri noa i te ao. Kei Aotearoa nei hoki tētahi o ngā ōwehenga tiketike rawa o ngā momo mōrea, whakamōrea rānei i te ao – neke atu i te 75% o ngā momo ngārara, manu, pekapeka māori, ika wai māori katoa. Ki te kore tātou e aro wawe atu, ka ngaro rawa pea ētahi o ngā momo whakamōrea rawa o ēnei momo i roto i ngā whakaturanga tangata e rua noa iho pea kei mua i te aroaro.¹

Ko Kaikonihī-kore 2050 te urupare māia a Aotearoa ki te hekenga kanorau koiōra o ōna momo ake, nā ōna kaikonihī. Ko te whāinga o te hōtaka he ārai i te hurihanga mutunga kore o te ārai kaikonihī,

me te haepapa i ēnei kararehe i Aotearoa me ōna moutere moana i mua i te tau 2050.

Mai i tōna whakarewanga i te tau 2016, i aronui a Kaikonihī-Kore 2050 ki te whakaoho i ngā tāngata o Aotearoa kia whai wāhi ki ōna kitenga, kia hāpainga hoki ā rātou mahi i ō rātou hapori ake. Nā ngā rangahau i whakakite kua tahuri ngā tāngata o Aotearoa ki te awhi i te kōkiri kaikonihī-kore – 39% o ngā tāngata o Aotearoa kua rongo kōrero mō te kaupapa, ā, 29% kua hopu i ētahi kaikonihī i kawea mai i tāwāhi ki ēnei moutere.²

I te tau 2020 i whakatakotoria te mānuka kia hangaia ētahi rohe kaikonihī-kore i te tuawhenua o Aotearoa. Kua puta kē mai ngā hua o tēnei whāinga matawhānui – i ēnei rā ka kitea e te whatunga kāmera mamao a Predator Free South Westland i te tini o ngā rowi, he maha kē atu aua rowi i te maha o ngā kiore (ko te rowi te kiwi onge rawa o Aotearoa) i te tonga o Ōkārīto.³

Kua kite ā-kanohi au i ngā hua o ngā kaupapa tāone nui pēnei i Kaikonihī-Kore, Te Whanga-nui-a-Tara, i tangohia ai ngā kaikonihī i Te Motu Kairangi/ Miramar Peninsula, me te aha he 136% te pikinga ake o te maha o ngā manu māori.⁴

1 stats.govt.nz/indicators/extinction-threat-to-indigenous-species

2 Predator Free New Zealand Trust. 2024. Measuring the perceptions of Predator Free 2050 since 2022 benchmark study: Final debrief June 2024. Te Whanga-nui-a-Tara: Predator Free New Zealand Trust. predatorfreenz.org/wp-content/uploads/2024/06/PFNZ_Final-debrief_2024.pdf

3 pfs.org.nz/more-rowi-than-rats-an-exciting-milestone-in-south-okarito

4 pfw.org.nz/our-project/news/miramar-peninsulas-bird-numbers-flying-high



Nā ngā rangahau i whakakite kua tahuri ngā tāngata o Aotearoa ki te awahi i te kōkiri kaikonihi-kore – 39% o ngā tāngata o Aotearoa kua rongō kōrero mō te kaupapa, ā, 29% kua hopu i ētahi kaikonihi i kawea mai i tāwāhi ki ēnei moutere.

He nui kē atu ngā mahi ārai kaikonihi o ēnei rā i ō mua mahi, ka kapi ināiane ngā heketea 1.8 miriona whenua tautiaki tūmatanui, tae atu ki ngā punanga kaunihera me ngā whenua tūmataiti. Nā ēnei mahi i tautiaki ngā momo koirora whakamōrea, i aukati hoki ētahi atu pānga me te mōhio kei te pai haere ngā hangarau haepapa e hangaia ana e te ao. E aro nui ana ngā iwi me ngā kāwanatanga o te ao ki Aotearoa mō ngā ahunga whakamua o ngā hangarau haepapa kīrearea e mahia nei e tātou – he whanaketanga ēnei ka tupu hei ahumahi hou, ka tuku taonga ki te ao, arā, hei ahumahi hou mō tēnei motu.

Kāore anō kia mutu te ako mō ēnei āhutatanga. I roto i ngā tau i mua i 2030, ko te aronga nui he tautoko i ngā mahi whakamiharo e kawea nei i tēnei wā, me te āki i ngā mahi auaha mō ngā taputapu, mō ngā tikanga mahi me te tuituinga mai i te hapori, hei kaupare i ngā tātaramoa e whakapōrearea nei i te whakawhānuitanga o te kaupapa ki te motu katoa.

Ko te aronga tae mai ki tēnei wā, kua hāngai ki te kiore, ki te paihamu, ki te whānau toriura (te toriura, te whereti, me te wīhara), engari kia mārama te tangata ki te pānga kino o ētahi atu

kaikonihi ki ō tātou koirora māori. Tā tēnei rautaki he tāpiri i ngā ngeru mohoa momo hei haepapa ki te rārangi momo ūnga, he tāpiri hoki i ngā mauhi me ngā tuatete ki te rārangi rangahau, i runga i te mōhio he pai ake me tino mārama ki ngā tauwhitinga ki ngā pūnaha rauropi māori e tutuki ai te matakite mō Kaikonihi-Kore 2025.

Ka nui taku hari mō te āhua o ngā tau e 5 o te hōtaka, i a tātou e kōkiri nei i te auaha, e whakaoho ana i ngā tāngata o Aotearoa kia kōkiri mahi mō te taiao, kia puta ai he Aotearoa kaikonihi-kore i te mutunga.

E mihi ana ki a koutou katoa mō te wāhi ki a koutou i roto i ēnei mahi.

A handwritten signature in black ink that reads "Honore Tama Pōtaka". The signature is stylized and written in a cursive-like font.

Hōnore Tama Pōtaka

Minita mō Te Papa Atawhai

Kupu whakataki me te horopaki

He whāinga tiketike tonu tō Kaikonihi-Kore 2050, arā, kia haepapatia ētahi kaikonihi whāngote pakupaku i āta kōwhiria, puta noa i Aotearoa i mua i te tau 2050 kia piki ai te ora o te taiao me ō tātou hapori.

Ko ngā kaikonihi i kawea mai i tāwāhi pēnei i te kiore, i te whānau toriura, i te paihamu, me ngā ngeru mohoaō tētahi o ngā take matua o te hekenga kanorau koiōra i Aotearoa, ā, he pānga nui tō ēnei momo ki ngā koiōra, ki te ōhanga me te ahurea i konei. Ko te whāinga o Kaikonihi-Kore 2050 kia hangaia he ao e pakari ai ngā pūnaha rauropi, ka noho hei mea ngahau mō ngā whakatupuranga kei te ara ake.⁵

I hangaia he rārangi momo ūnga i te tau 2016, kei reira hoki e whitu ngā momo, mai i ngā momo kaikonihi whāngote tekau kei Aotearoa – te paihamu, te hinamoki (ship rats), te pouhawaiki (Norway rats), te kiore māori, te wihara me te whereti. I kōwhiria ēnei momo nā te mea i whakaarotia ko rātou he kaha kē atu ki te tūkinō i ētahi atu momo, ā, ka taea tonutia ērā te haepapa i mua i te tau 2050.

Tā tēnei rautaki he tāpiri i ngā ngeru mohoaō ki te rārangi momo hei haepapa, arā, ka meatia rātou hei ūnga haepapa ā-motu i mua i 2050. Tā tēnei panonitanga he whakaae ki te pānga tino nui o ēnei ki ngā koiōra māori, me te tautoko a te iwi nui tonu mō te whakatika i tēnei take.

Kua tāpiritia hoki ngā mauhi me ngā tuatete ki te rārangi rangahau, kia mārama ake ai tātou ki tō rātou pānga ki ngā koiōra māori, tae atu ki tō rātou urupare ki te mukunga atu o ērā atu kaikonihi. Mā tēnei mōhiotanga ka piki te haumi rawa ki te whakawhanaketanga taputapu patu atawhai me ngā tikanga tōtika hei whakahaere i ēnei taputapu hou.

Ko Te Papa Atawhai (DOC) te tari ārahi rautaki i te whāinga mō Kaikonihi-Kore 2050, engari ka kawea tahitia e ngā riu me ngā raorao, me ngā hapori katoa o Aotearoa – koia e kīa nei, ko 'tātou' ā, ko 'tā tātou' hoki, i roto i tēnei rautaki.

⁵ Te Papa Atawhai. 2020. Biodiversity in Aotearoa: an overview of state, trends and pressures. Te Whanga-nui-a-Tara: Te Papa Atawhai. doc.govt.nz/globalassets/documents/conservation/biodiversity/anzbs-2020-biodiversity-report.pdf



He rātā tai tonga e ngawhā mai ana i muri i ngā mahi haepapa kaikonihī mō te kaupapa Predator Free Te Tai Poutini ki te Tonga. *Whakaahua: Jase Blair*



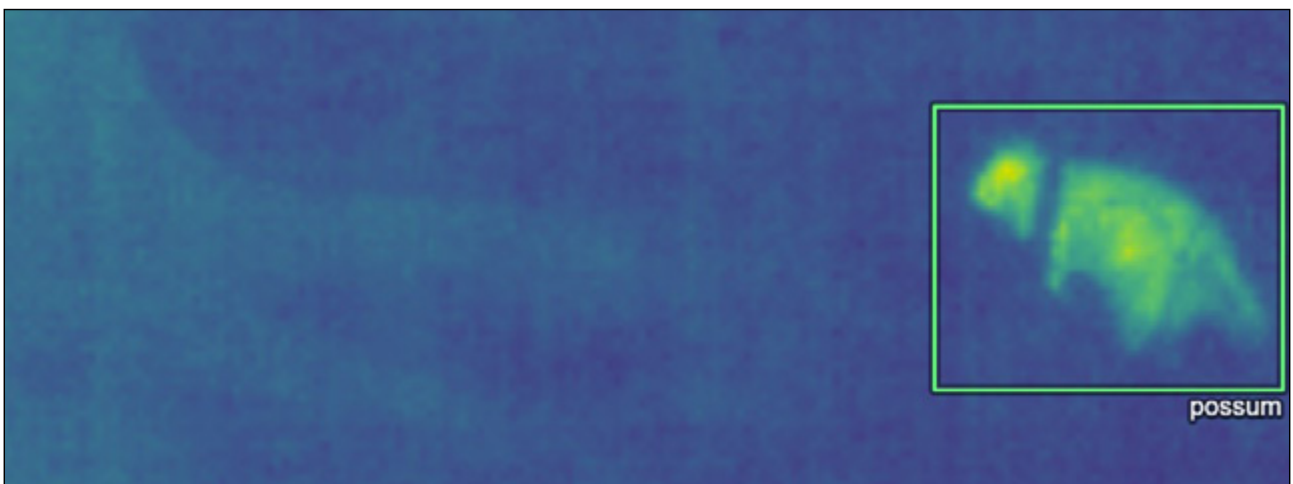
Te tū o te kaupapa i tēnei wā

Kua ngoto te kaupapa Kaikonihi-Kore 2050 ki te ngākau me te hinengaro o Aotearoa, kāore he tatanga mai o ētahi atu kōkiri tautiaki taiao, mai rā anō. Kua noho hei aronga nui mō ngā mahi a te tangata, kua tupu ngā haumitanga moni, kua whānui kē atu te tuituinga me te rangahau. I roto i ngā tau e 9 mai i te puakitanga o te whāinga Kaikonihi-Kore 2050, kua tino koke whakamua a Aotearoa, ā, kua pūranga mai he painga, kua ako i ngā mea maha mō ngā mahi e tutuki ai te whāinga.

Mā roto i tētahi mahi ā-motu nui whakaharahara i āta rurukutia, a ngā tāngata takitahi, a ngā Iwi, a ngā Hapū, a ngā Iwi, a ngā kaupapa whakakore kaikonihi rahi tonu, a ngā hāpori, ngā kaipūtaiao, a ngā mahi a Te Papa Atawhai, a ngā rōpū o waho o te Kāwanatanga (NGO), a ngā kaunihera ā-rohe me te hunga atawhai, kua whakakitea e tātou ki te ao kua tata kē mai tētahi ao kaikonihi-kore. Inā ētahi tauira o ēnei riaka nui:

- te whakawhanake i tētahi taunakitanga ariā mō te whakakorenga i roto i ngā taiao tāone, tuawhenua, aotūroa anō hoki – kua puta ētahi hua tuatahi tino pai, pēnei i Te Motu Kairangi/Miramar Peninsula i Te Whanga-nui-a-Tara, (horanuku tāone nui) me te tonga o Te Tai Poutini (he takiwā tuawhenua, tiaki taiao)
- te hanga hangarau hou, pēnei i ngā māunu tāoke, ngā taputapu atamai hangahanga me ngā whanaketanga māhanga atamai, kua tino piki nei te kitenga, te mukunga me te ārainga kaikonihi.
- te whakawhanake māramatanga ki ngā tauira whakahaere me ngā pūnaha tautoko hāpori e taea ai te whakakorenga puta noa i te motu
- te whai i tētahi māramatanga ki ngā auahatanga me ngā ritenga pūtaiao e taea ai te huri i te taunakitanga ariā ki ētahi ara ngāwari kē atu te utu, ka taea te whakarahi ki ngā whenua nui tonu, ka taea hoki te tautiaki kei ekengia anō e te kaikonihi urutomo.

He mea hira ēnei tutukitanga, ā, hei whakatata mai ēnei i te ao kaikonihi-kore.



Te pūhara tukatuka atahanga. *Whakaahua: The Cacophony Project*

Inā ngā pīkauranga nui kei mua:



- te whakakī i ngā āputa mātauranga hei whakanoho i Kaikonihi-Kore 2050 ki tōna kahupapa tika e taea ai ngā mahi te whakawhānui.



- te whakawhanake ara mārama mō te whakakorenga i ngā horanuku tāone, tuawhenua, tautiaki taiao hoki.



- te whakapakari i ngā pūtake taunakitanga mō ngā painga ā-taiao, ā-ōhanga hoki o Kaikonihi-Kore 2050.



- te whakapiki i te māramatanga o te iwi nui tonu me te tautoko mō te kaupapa.

Ki te puta he painga i te aronga ki te rangahau, ki te whanaketanga me te auaha i roto i ngā tau e 5 e tū mai nei, ka āhei a Aotearoa ki te whakaaro mō te whakawhānuitanga o ngā mahi i te ahunga ki 2050.

Ko tā te wātaka hei te whārangi 32–34 he whakatakoto i te ahunga o ngā painga, o ngā putanga me ngā tohu huarahi e whāia nei e mātou mō te tau 2050.

Mauī whakarunga: He māunu kaikonihi Proterma™ kei roto nei te 1080, kua reri mō ngā whakamātautau e hāngai ana ki ngā ngeru mohoa me ngā toriura. *Whakaahua: Finlay Cox*

Matau whakarunga: Ko Conor tētahi o ngā tāngata neke atu i te 1,000 kua whai wāhi ki te tohu o Predator Free Ōtepoti. *Whakaahua: Predator Free Dunedin*

Mauī whakararo: Te kawē haere i tētahi tīti ki tōna kāinga hou ki Rēkohu/Wharekauri.

Matau whakararo: Ko Elizabeth, tētahi rēnetia o Predator Free Te Whanga-nui-a-Tara, e whakaatu ana i tētahi kāinga mokopāpā ki ngā tamariki ririki. *Whakaahua: Peninsula Early Learning*

Te whakahāngaitanga ki *Te Mana o te Taiao – Aotearoa New Zealand Biodiversity Strategy 2020*

E noho ana a Kaikonihi-Kore 2050 hei wāhanga mō tētahi urupare whānui kē atu mō te whakatinanatanga o Te Mana o te Taiao – Aotearoa New Zealand Biodiversity Strategy 2020 (ANZBS), e whakatakoto atu nei i te ahunga rautaki mō te tautiaki, mō te whakaora me te whakamahi toitū i ngā kanorau koiora o Aotearoa.⁶ Ka tautohutia e te rautaki ko ngā momo koiora urutomo tētahi o ngā pēhanga e rima ki ngā kanorau koiora māori o Aotearoa.

Ko ngā momo e whakakekotia nei i roto i Kaikonihi-Kore 2050 ētahi o ngā kaikonihi urutomo tūkinō kaha rawa i te kanorau koiora māori o te motu.⁷ Hei te whakawhānuitanga o Kaikonihi-Kore 2050 ki te motu katoa he mea hira kia rurukutia ngā mahi ki ērā atu kaupapa ā-motu e ārai nei i ētahi tau tūkinga, pēhanga pūnaha hauropi pērā i ngā kaikatikati rau rākau, pēnei i te tia, me te nanekoti kia tino eke ai ngā painga kanorau koiora ka taea i muri i aua haumitanga me aua kōkiri, ki te taumata tiketike rawa ka taea.



Tāne Mahuta, Te Ngahere o Waipoua, Te Tai Tokerau. *Whakaahua: Natalia Volna, itravelNZ*

⁶ doc.govt.nz/anzbs-2020

⁷ doc.govt.nz/predator-free-2050

Te hira o te ārai kaikonihī

Ko te wawata kia haepapatia kia kaupapa hārō ngā kaikonihī o te tuawhenua hei te hira ngahuru tau rā anō ka tutuki. Mō nāianei, he wāhi nui tonu tō te ārai kaikonihī i roto i Kaikonihī-Kore 2050.

Mō te hira tau, kua uru mai te huhua o ngā tāngata takitahi, ngā rōpū me ngā hinonga tautiaki taiao ki ngā māhi ārai kaikonihī puta noa i Aotearoa hei whakaheke i te maha o ngā kaikonihī, kia mōhio hoki kāore he wāhi haumarū mō ngā momo kōiora whakamōrea. Nā ēnei mahi taketake kua heke te maha o ngā kaikonihī ki ngā taumata pāpaku, i hua ake ai he oranga taupua, he oranga i matea nuitia hoki mō ngā kōiora māori, mō te tini o rātou, nā ēnei mahi i oraiti ai rātou ki te ao nei.

Kei te āta āraia tēnei mea te kaikonihī puta noa i te motu, he maha atu ēnei mahi i ō mua mahi, mai rā anō – engari e haere tonu ana te mahi, kia mārō tonu. He kokinga te Kaikonihī-Kore 2050 i te huarahi, arā, kua tahuri kē i te ārainga noa ki tētahi ao haepapa rawa tūturu i te kaikonihī. Mā tēnei ka hua ake ētahi painga pūnaha hauropi, ōhanga, pāpori, ahurea hoki, te tini o ēnei kei te kitea i ēnei wā, ka whakamāmātia hoki ngā pīkauranga o ngā mahi me te utu e pā ana ki te ārainga kaikonihī mutunga-kore, e taea ai te āwhina i ētahi atu whakaarotau ā-motu.⁸

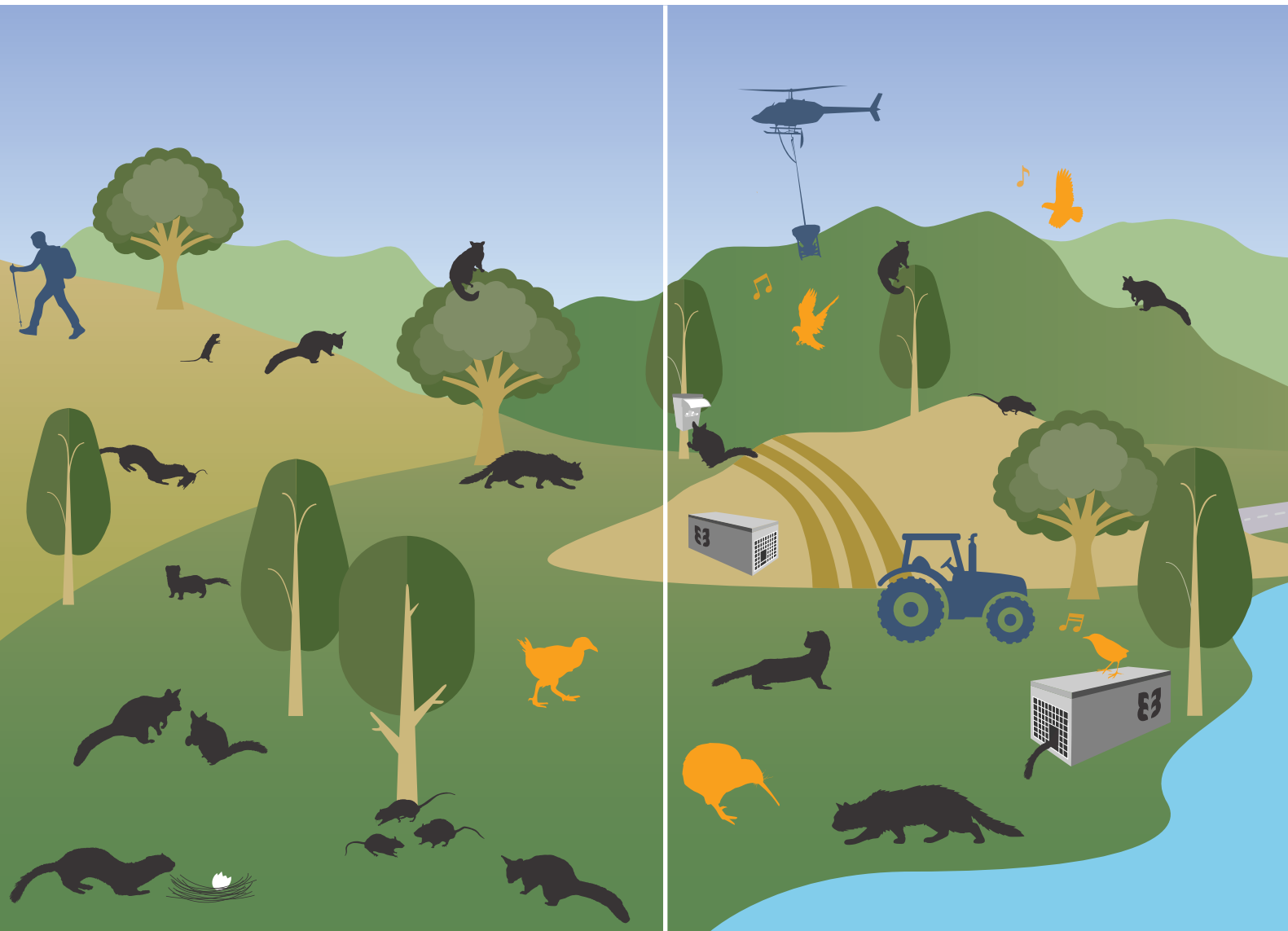
Ko tā tēnei rautaki he whiri tahi i ngā momo whakahaere kaikonihī katoa me te aro nui ki:

- te kawē whakamua i te whakakorenga o ngā momo kōiora maha ina taea, ina whai hua, ina taea te mahi kia toitū me te whai kia whakawhānuitia ngā putanga hua kanorau kōiora mā te whakatika i ngā mōrea ā-rohe
- te whakamātau i te whakakorenga i roto i ngā kaupapa horanuku hei whakamahine i ngā utauta me ngā tikanga mahi mō ētahi kaupapa whānui kē atu
- te ārai kaikonihī kia mau ai ngā taupori kōiora mohoa o ēnei wā i a tātou.

Ko tā te pikitia i raro iho nei he waitohu he pēhea e whakapikia ai te hokinga mai ki te ora o ētahi momo māori, i raro i ēnei ara ārai konihī rerekē (hei tauira, te kiwi, te pīwakawaka, te tūi) ahakoa e ora tonu ētahi kaikonihī torutoru i te taha. Tēnā ko tēnei, e whakawhirinaki ana ētahi atu momo (hei tauira, te tieke, te hihi, te kākāpō me te tini o ngā manu moana) ki ngā punanga kōiora, me ngā moutere kaikonihī-kore kua oti ngā momo kōiora maha te haepapa.

⁸ Reeves K. 2025. Beyond the numbers: the hidden impact of Predator Free Wellington – Most Significant Change Evaluation Report. Te Whanga-nui-a-Tara: Predator Free Wellington. reports.pfw.org.nz/site/assets/files/2522/msc_report_august_2025.pdf

Ngā pānga o ngā ara ārai kaikonihī ki ngā momo koiora māori me te taiao



Kāore he whakahaere kaikonihī

- Ka kai haere tonu ngā kaikonihī tauhou i ngā tupu me ngā kīrehe taketake, ā, he maha hoki ngā kararehe ka korehāhā, ko ētahi i roto i ngā whakaturanga tangata e rua noa iho.
- Ka raru ngā hononga o ngā tāngata o Aotearoa ki te aotūroa, ki te toiora, ki te rēhia, ki te mahi tāpoi me te ōhanga.

Te ārai kaikonihī

- He maha ngā taupori koiora ka mutu te heke, ka whakaritorito anō, ā, ahakoa kāore e ngaro ngā kaikonihī i Aotearoa i tēnei, mā konei ka heke te maha o ngā kaikonihī mō ētahi marama, mō ētehi tau anō hoki.
- He nui te utu o te tāmi i ngā tauranga kaikonihī, hoki atu, hoki atu, ā, ka whai pānga mō ētahi rohe ruarua noa o Aotearoa.



Te haepapa kaikonihi

- Nā ngā utuauta me ngā hangarau auaha, ka tino mukua ngā kaikonihi i ngā rohe rahi tonu o te tuawhenua, kāre kau he taiepa i whakamahia.
- Ko ngā kaikonihi ka hoki anō ki roto i ngā rohe i haepapatia tō rātou momo, ka kitea inamata, ka mukua kētia atu i mua i te whakaputa uri me te noho mai anō o ētahi taupori hou.
- Ka matomato anō te āhua o ngā tupu nō konei ake, waihoki ngā kīrehe, i roto i ēnei rohe.

Te haepapa kaikonihi

- Kua mukua katoatia ngā kaikonihi, ā, kāore e taea te hoki mai ki ngā rohe kua oti tō rātou momo te muku.
- He maha ngā moutere moana kua oti te haepapa, me te iti o te āhei o te kaikonihi kia whakaeke anō i aua moutere, nā ngā taupā moana, me ngā pūnaha wawao, urupare hoki.
- Kua hōhonu kē atu te ngahau o te aotūroa ki ngā tangata o Aotearoa, nā te matomato o ngā koiora me tētahi ōhanga pakari kē atu.



Te kawe kiwi ki tētahi kāinga hou ki Te Moutere o Waiheke. Whakaahua: Te Korowai o Waiheke

Mā tini, mā mano hei kawē i Kaikonihi-Kore 2050

E kore Kaikonihi-Kore 2050 e tutuki i te rōpū kotahi anake – mā ngā mahi a te katoa ka puta te ihu. He mea āta hoahoa tēnei rautaki hei arataki i ngā mahi a ngā hapori, a ngā Iwi, a ngā Hapū, a ngā Imi, nā ngā kaupapa whakakore kaikonihi rahi tonu, a ngā rōpū o waho o te Kāwanatanga (NGO), a te hunga atawhai, a ngā kaipūtaiao, a ngā kaiuaha, o ngā punanga i whakataiepatia, a ngā kura, a ngā rangatira pupuru whenua, a ngā kaunihera ā-motu, ā-rohe, ā-takiwā hoki me ētahi atu. He wāhi taketake tonu tō tēnā, tō tēnā, tō tēnā hei whakatinana i te kitenga o tētahi Aotearoa kaikonihi-kore.

Ko tā ngā painga pea ka kitea e tātou i muri i Kaikonihi-Kore 2050 he whakahihiri i te wairua mahi tahi o ā tātou mahi – kia whakatūria tikatia tō tātou piri ki te taiao, kia tautiakina te kanorau koiora, kia whakapakaritia te toiora hapori, kia whakapikia hoki te hauora o te iwi, o te taiao me te ōhanga.

Nā te wairua mahi tōpū o Kaikonihi-Kore 2050 kua whakarārangitia e mātou i raro iho nei ētahi tikanga mahi taketake hei ārahi i ā tātou mahi, i ā tātou whakatau, pāhekohekotanga hoki puta noa i te kaupapa – mā te ako, mā te auaha me te hao i te katoa.



He wānanga kei te Kura Reo o te Taiao, Rotorua. *Whakaahua: Rawhitiroa Photography*

Ngā tikanga mahi

Te hanga hononga Tiriti houkura

Ko Te Tiriti o Waitangi | the Treaty of Waitangi hei arataki i ō tātou hononga, whakatau, mahi anō hoki. E whai ana mātou kia noho ko ngā uara, ko ngā tika me te mātauranga Māori hei paiaka mō te kaupapa i ngā taumata katoa.

Te noho hei pou arataki mō te motu, me te penapena i ngā kaihautū ā-rohe

Ahako e kawe tahi ana tātou i tētahi whāinga ā-motu, he mea taketake ngā kaihautū ā-rohe, me tautoko mārika, kia whakaatatia ngā pūnaha hauropi ahurei o tēnā hapori, o tēnā hapori, me ō rātou wheako.

Me whakaū te urungi hao i te katoa

Mā ngā reo matahuhua hei ahua te ahunga o Kaikonihi-Kore 2050. E tutuki ai te whāinga o Kaikonihi-Kore 2050 me mātua mahi ngātahi ngā lwi, ngā Hapū, ngā lmi, ngā kaunihera ā-motu, ā-rohe, ā-takiwā hoki, ngā kaupūtaiao, ngā ahumahi me ngā hapori – kia mōhio ai tātou e whakaatatia ana ā rātou tirohanga i roto i ā tātou mahi.

Me ako ngātahi

Ko tā te kaupapa he hora taputapu, aratohu, me te tautoko hei ine i ngā mea hira rawa atu – ngā pūnaha hauropi hauora, ngā hapori tupu me ngā kōtuitanga Tiriti motuhenga. He rite tonu tā mātou tiri i ngā māramatanga, i ngā utauta me ngā akoranga puta noa i te hunga whai wāhi mai, mai i ērā e mahi ana mō te toiora haumarutanga moutere iti, ki te whakakore ā-horanuku whānui, me ngā mahi haepapa. Mā ngā whakawhitinga mōhiotanga pūataata, wātea hoki, ka pai ake tā tātou whakaako i a tātou anō.

Te whakawhiti kōrero me te tuitui tāngata kia whai hua

E tō ana mātou i ngā tāngata o Aotearoa ki ngā whakataunga me te ahunga o Kaikonihi-Kore 2050 nā te mea ki a mātou ko ngā rongoā pai rawa, tūmau rawa ki ngā wero tuatini ka hua ake i te mātauranga me ngā wheako o tēnā hapori, o tēnā hapori. E tiri ana anō hoki ki ngā tāngata katoa o Aotearoa he pēhea tātou i ahu whakamua ai ki te whāinga Kaikonihi-Kore 2050, me te pāho i ā rātou pūrākau mō te whāinga wāhi ki roto.



Toroa pango / light-mantled sooty albatross, Te Moutere o Adams.
Whakaahua: Mat Goodman

Rautaki

Ko tā te noho kaikonihī kore he panoni mārika i ngā ngahere, i ngā tāone nui, i ngā tāone iti me ngā pāmu o Aotearoa kia noho hei wāhi e ora ai ngā tupu me ngā kararehe māori o tēnei whenua. Mā konei hoki ka tautokona, ka whakatinanatia hoki *Te Mana o te Taiao – Aotearoa New Zealand Biodiversity Strategy (ANZBS)*. Engari kei tua noa atu te pānga te whakatutukitanga o Kaikonihī-Kore 2050 i te oranga kanorau koiora anake – ko te tūmanako ka kite ngā tāngata katoa o Aotearoa, ngā hāpori, me te ōhanga i ōna painga whakaumu, ahakoa ā-kiko, ahakoa ā-wairua. Ā, ehara i te mea me tatari tātou ki 2050 rā anō kia kitea ai aua painga – kei te mōhio tātou kei te kitea e te tini o ngā tāngata o Aotearoa i ngā painga o ngā kōkiri kaikonihī-kore i roto i tō rātou ao ia rā.



Ētahi tamariki i Te Motu Kairangi e whakatika ana, e tautiaki ana i te tomo aroturuki.
Whakaahua: Peninsula Early Learning

Ko ngā painga e tūmanakotia ana mō Kaikonihi-Kore 2050 me te hāngaitanga ki ANZBS

Ngā huaputa hapori

Huaputa 3 ANZBS

E ranea ana ngā oranga tangata nā te hono ki te taiao

Huaputa 4 ANZBS

E ora ana ngā hoa Tiriti, ngā whānau, ngā hapū me ngā iwi nā tō rātou noho tika hei rangatira, hei kaitiaki

Ngā painga hapori

- Ka whakaorangia e te tangata whenua ngā tikanga mahi kai tuku iho, pēnei me te rongoā, te mahinga kai me te reo, ngā tikanga, me te tukunga iho o te mātauranga Māori ki ngā reanga hou
- Ka piki te whakahī o ngā tāngata o Aotearoa mō ngā hua i muri i te takoha i tō rātou wā, me te mahi tahi me ētahi atu mō tētahi kaupapa e paingia ana e te katoa
- Ka piki ngā porotūtakitanga o ia rā mō ngā tāngata nui atu o Aotearoa ki ngā koiora o te taiao, e piki ake ai te tuakiri ā-motu, me te tūhono i ngā reanga o mua, o nāianei, o āpōpō anō hoki
- Kua piki te hauora tinana, me te hauora hinengaro o ngā tāngata o Aotearoa
- Ka rangona anō te korihi o ngā manu tangi ata e ngā tāngata o Aotearoa ia rā
- Kua tukua ki te whānau te whāinga wāhi kia mahi i tō rātou whenua, kia tūhono anō hoki ki te taiao
- Kua hoatu ki ngā taiohi o Aotearoa te mātauranga, ngā pūkenga me ngā uara ā-taiao e hiahiatia ana hei whai i ngā aramahi o te ao pūtaiao, tautiaki taiao anō hoki



Ngā huaputa kanorau koiora

Huaputa 1 ANZBS

E hauora ana ngā pūnaha hauropi mai i ngā tihi maunga ki te rire o te moana

Huaputa 2 ANZBS

E hauora ana ngā momo koiora māori me ō rātou ripoiinga puta noa i Aotearoa, ki tua atu hoki



Ngā painga ōhanga

- He iti iho ngā paunga moni a Aotearoa mō te whakahaere kararehe kīrearea wā roa, me te wāteatanga ake o ngā moni mō ētahi atu whakaarotau, me ētahi atu raruraru haumarutanga koiora
- E tupu tonu ana te ahumahi hangarau kīrearea o Aotearoa, i te kāinga, i tāwāhi anō hoki
- Kua heke ngā tūkinotanga ki ngā tūāhanga tūmatanui, tūmataiti hoki
- E tupu tonu ana ngā rohe, ngā tāone nui, ngā tāone iti me ngā rohe taratahi nā te pikinga o te maha o te hunga tāpoi, nā ngā whakapaunga moni, ēnei katoa i takea mai i te pikinga ake o te ātaahua ki te tāpoi
- Kua heke te torotoro o te toxoplasmosis me te leptospirosis, me te pikinga ake o ngā pānga pai ki te ōhanga, ki te tangata me ngā kararehe pāmu
- He pūkenga hangarau hōhonu me ngā rawa hinengaro ārai kīrearea / haepapa hoki ka noho hei mea uara nui ki ngā māketete o te ao, ka taea hoki te kawē ki roto i ētahi atu tohe mō te taiao
- He iti iho ngā whakapaunga moni o te hapori ahuwahenua mō te ārai tahumaero

Ngā huaputa ōhanga

Huaputa 5 ANZBS

E paiheretia taketakitia ana te whāinga rawa ki te kanorau koiora hihiri

Rere whaka-te-karaka mai i te taha mauī: I muri i ētahi tau maha o te ārai kaikonihī nā te rōpū tūao o Tamahunga Trappers, e hoki ana te kiwi ki ngā ngahere o Tamahunga. *Whakaahua: Tamahunga Trappers*; He rātā tai tonga. *Whakaahua: Jase Blair*; He pūrere EzyLure. *Whakaahua: Itch Photography*

Ngā ekenga taumata o mua (2016-2025)

I roto i ngā tau 2016-2025 ka kitea te taunakitanga ariā mō tētahi Aotearoa Kaikonihi-Kore 2050, ā, ka whakatairangatia hoki ngā painga me te uara ka horaina e Kaikonihi-Kore 2025 mō Aotearoa. I horaina ngā mea ātaahua o taua wā nā ētahi kaupapa whakakore kaikonihi arowhānui me ētahi atu mahi:

Te kanorau matomato

- I ngawhā mai ngā pua whero o te rātā i te ngahere o te tonga o Te Tai Poutini i te raumati o 2024, tētahi wāhi o ngā pūtake o te pērātanga ko te whāinga kia whakakorea te paihamu i ngā heketea neke atu i te 100,000 o te rohe, e Predator Free South Westland.⁹
- Kua tata ake a Maukahuka / Auckland Island, he moutere i Tiritiri o Te Moana kia tohua hei rohe punanga e Antarctic World Heritage, te noho kore kīrearea tauhou, nā te wāhanga takatū o te kaupapa Restoring Maukahuka/ Auckland Island. Ko tēnei mahi i runga i ōna heketea 46,000 te kaupapa haepapa moutere moana rahi rawa, matatini rawa kua timataria e Aotearoa, mai rā anō.¹⁰
- Kua tata iti atu ngā kākāpō te hoki atu ki Rakiura, arā, kua timata ngā mahi tuatahi hei whakamātau i te āhei, i te whakaae o ōna tāngata, me ōna tikanga mahi mā roto i te kaupapa Predator Free Rakiura. 186,000 heketea te whānui o te moutere, nā reira, ki te haere te kaupapa, koia rā te kaupapa haepapa rahi rawa o Aotearoa mai rā anō.¹¹
- Kua piki te pāpātanga pikinga ki te pakeketanga o ngā pīpi tokoeka o Te Whakatakaka-o-kā-kārehu-o-Tamatea (Fiordland) ki te 60%, he pikinga mai i 0%, me whakamoemiti rā te Kaupapa National Predator Control.¹²
- E noho ana te hunga i Te Moutere o Waiheke i waenga i ngā manu māori, 76% te nuinga ake i tō 2020, otirā, 388% te pikinga ake o ngāi-kākā, me whakamoemiti rā ngā mahi a te hāpori me Te Korowai o Waiheke.¹³

⁹ Te Papa Atawhai. 2023. Predator Free 2050 biennial progress report – June 2023. Te Whanga-nui-a-Tara: Te Papa Atawhai. doc.govt.nz/globalassets/documents/our-work/predator-free-2050/predator-free-2050-progress-report-2021-2023.pdf

¹⁰ doc.govt.nz/our-work/maukahuka

¹¹ blog.doc.govt.nz/kakapo-raise-predator-free-stakes

¹² Te Papa Atawhai. 2025. Predator response: protecting native species 2025/26. Te Whanga-nui-a-Tara: Te Papa Atawhai. doc.govt.nz/globalassets/documents/our-work/national-predator-control-programme/predator-response-booklet.pdf

¹³ Te Korowai o Waiheke. 2024. Impact Report Pūrongo Kawekawe: Hūrae 2023– Hune 2024. Waiheke Island: Te Korowai o Waiheke. static1.squarespace.com/static/66caff957fd0481a3ecd846f/t/67a06797349ca5244483a68e/1738565542257/IMPACTREPORTTKOW_for%2Bonline%2Bsingle%2Bpages%2B2024-10-31.pdf



He tāngata e ako ana i te hōhonutanga atu o ngā mahi hopu, i tētahi akoranga hopu kaikonihī i Taumarunui.

He hapori pai ake ōna hononga, he hapori pakari kē atu

- E noho tahi ana ngā hapori puta noa i Aotearoa i te taha o ngā momo māori nui atu, nā ngā kōkiri a PF2050:
 - » He kiwi kei ngā iāri o ngā hapori o Whangārei-te-rerenga-parāoa, nā ngā mahi nui whakarahara, i haere mō te hia tau, a ngā rōpū hapori me Kaikonihī-Kore Whangārei.¹⁴
 - » Ko te nuinga o te hunga o Pōneke kei te tūpono ināiane ki ngā koiora mohoa nā te hua o ngā mahi a Predator Free Wellington, a te Capital Kiwi Project me Te Māra a Tāne Zealandia. Kua piki ngā taupori kōtare/kingfisher mā te ono whakareanga, ā, e whā whakareanga te pikinga o ngā taupori piwakawaka.¹⁵
- **Ko te tino rangatiratanga kei ngā iwi tonu, ko rātou tonu kei te arataki i ngā kaupapa horanuku whakakore kaikonihī arowhānui.** E whā ngā kaupapa nā ngā lwi me ngā Hapū i hautū kei te whakaora i ō rātou whenua tuku iho mā te muku atu i ngā kaikonihī me te whakauru auahatanga i takea mai i te mātauranga Māori.
- **29% o ngā tāngata o Aotearoa kua whai wāhi ki te hanga māhanga ā-hapori, ā-iāri kāinga noho rānei.**¹⁶

¹⁴ backyardkiwi.org.nz

¹⁵ reports.pfw.org.nz/2024-25-impact-report

¹⁶ predatorfreenz.org/wp-content/uploads/2024/06/PFNZ_Final-debrief_2024.pdf



Te pūtahi rangahau Zero Invasive Predators, i Ōtautahi. *Whakaahua: Itch Photography*

Te auaha me te houkura ōhanga

- Kua whakatupungia e te hunga auaha me ngā kaiwhakawhanake o Aotearoa tētahi mākete i te motu nei mō ngā hangarau kirearea, e matapaetia nei tōna uara he neke atu i te \$15 miriona, me te pikinga ake o ngā hokonga ki tāwāhi.¹⁷
- He pitomata tō te haumitanga i roto i ngā utauta ira pitomata me te atamai hangahanga kia whakakamakamatia ake a Kaikonihi-Kore 2050, kia heke iho hoki te utu hei ngā rā e tū mai nei.
- Kua āta tauria e Predator Free Wellington ngā painga pāpori, ōhanga, taiao hoki o tana kaupapa whakakore, arā, i tōna Wāhanga 1 (Te Motu Kairangi/ Miramar Peninsula) i hoki mai \$1.29 te painga mō ia tāra i haumitia, ā, i te wāhanga 2 i piki ki te \$2.49 mō ia tāra, i te toronga o te kaupapa ki Pōneke katoa.¹⁸
- Ko te kaupapa Tū Mai Taonga, Bringing whānau home, tētahi kaupapa whakakore kaikonihi arowhānui, ko te iwi te kaiārahi, i Aotea/ Great Barrier Island, te kaituku mahi rahi rawa i te moutere.¹⁹
- Kua kawea kētia te kaupapa Zero Possum a Predator Free Taranaki i te paihamu i ngā heketea e hia mano o ngā whenua pāmu, i heke iho ai te mōrearea o te bovine tuberculosis mō ngā kaiahuwhenua.²⁰
- Neke atu i 9,000 ngā kōkiri tāmi kaikonihi ā-hapori kei te tautoko i te oranga pūmau o te tini o ngā momo koiora māori, me te hora whāinga wāhi mō te pikinga pāpori, e piki ai te toiora tangata.²¹

¹⁷ Predator Free 2050 Limited. 2024. Predator Free 2050 Limited Annual Report 2024. Te Whanga-nui-a-Tara: Predator Free 2050 Limited. doc.govt.nz/globalassets/documents/conservation/threats-and-impacts/pf2050/papers-and-reports/pf2050-limited-fy2024-annual-report.pdf

¹⁸ pfw.org.nz/trapping/our-trapping-guides/research/return-on-investment-2025

¹⁹ ourauckland.aucklandcouncil.govt.nz/news/2023/11/tu-mai-taonga

²⁰ trc.govt.nz/environment/working-together/towards-predator-free-taranaki/restore-kaitake-zero-possum-project, ospri.co.nz/tb-and-pest-control/controlling-possum-population

²¹ trap.nz

Te rautaki o nāianeī (2026-2030)

Ko Kaikōnihi-Kore 2050 tētahi whāinga tai nui, inati hoki e tika ana kia āta rurukutia ōna wāhanga maha. He mea taketake ngā tau e 5 e whai ake nei i a tātou e kōkiri nei i te auahatanga e hiahiatia ana mō te haepapatanga ka taea te whakarahi, whai hua mō ngā pūtea ka whakapaungia, ka taea hoki te kawē ki mua i te iwi nui tonu hei kaupapa pai. Me haere tonu tō tātou ahunga whakamua tae mai ki tēnei wā, me te whakahihiri i te tini o te tangata kia whai wāhi mai – nā te mea e mōhio ana rātou ki ngā painga whaiaro, ā-hapori hoki o tētahi ao kaikōnihi-kore.

Kua oti ētahi whāinga tūtohu taketake e rima mō ngā tau e 5 kei mua i te aroaro hei aroturuki, hei whakapūrongo hoki ia tau mō te ahunga whakamua. Hei whakaata ēnei whāinga i ā mātou whakahekenga werawera mutunga kore, i a tātou e hanga nei i ngā utauta me ngā tikanga mahi – mā te auaha me te rangahau – e tautokona ai tātou ki tērā o ngā wāhanga o Kaikōnihi-Kore 2050.

Me karapinepine ā tātou mahi ā-motu, ngā mahi ā-hapori, te auaha hangarau hoki me te tautoko i ō tātou hoa kōtui kia mārāma ki ō rātou tūranga, ki te aroturuki i te ahunga whakamua me te āwhina pū i te ekenga o tētahi Aotearoa kaikōnihi-kore hei te taenga ki 2050.

He kākā i te moutere
o Waiheke. *Whakaahua:*
Al MacDiarmid



WĀHANGA AROTAHI 1

Takatū ki te mahi

Me whakahihi, me whakamana hoki i ngā tāngata o Aotearoa kia mahia ngā mahi mō te whakatinanatanga o Kaikonihi-Kore 2050.

NGĀ MAHI MATUA

- Me haere tonu ngā mahi whakahihi i ngā tāngata o Aotearoa mō te ao kaikonihi-kore 2050 kei mua – me haere ngā whakawhitinga pūrākau ā-rohe, ā-Imi, ā-lwi, ā-hapū mō ngā mahi kaikonihi-kore hei āwhina i te mārama, hei whakapiki i te tautoko, hei whakamanawa hoki i te tangata kia whakapono ka taea te Kaikonihi-Kore 2025, ka whai painga nui hoki.
- Me whakamana i ngā tāngata o Aotearoa kia hāpainga ngā mahi mō te aotūroa kia tautoko hoki i Kaikonihi-Kore 2050, me te tāpae i ētahi ara, rauemi huhua mō aua mahi.

NGĀ WHĀINGA TŪTOHU

WHĀINGA POTO 1

Kotahi i roto i te rua tāngata o Aotearoa kua rongu kōrero mō te kaupapa Kaikonihi-kore 2025

- 89% o ngā tāngata o Aotearoa e whakapono ana kei te matomato te aotūroa, engari he rerekē te āhua pono. He mea taketake kia ākona rātou kia mārama ki tēnei āhua, mā konei ka piki te māramatanga ki ngā mōrearea kaikonihi me te whāinga wāhi i raro i Kaikonihi-Kore 2050 ki te whakaora i te kanorau koiora.
- Mā te māramatanga o te iwi whānui ki Kaikonihi-Kore 2050 ka taea te kawē i te ngākau o ngā tāngata o Aotearoa kia tautoko – mō te urunga ki ngā whenua, te tautuku ki ngā mahi whakahaumarū koiora me te whakaaetanga utauta haepapa.

WHĀINGA POTO 2

E tautoko pū ana ngā kaupapa Kaikonihi-Kore 2050 arowhānui i ngā moemoeā o ngā Imi, o ngā lwi me ngā Hapū

- He whāinga wāhi kei Kaikonihi-Kore 2050 mō te whakapakari pātuitanga ki te iwi Moriori, ki a ngāi Māori me te kāwanatanga kia mahi tahi kia puta ai he taiao houkura. E tino tika ai te tautoko i ngā moemoeā o ngā Imi, o ngā lwi me ngā Hapū i ō rātou rohe, me hanga whāinga wāhi ngā kaupapa arowhānui katoa mō te urunga ki roto, me te hautū i ngā mahi.
- Ka noho ko ngā whakaaro, ngā ritenga me ngā pūrākau Māori hei mea taketake mō te kaupapa Kaikonihi-Kore 2050, ā, ka whirinaki tonu te ekenga taumata o te horanga ā-motu ā tōna wā ki te tautoko o te hia rau iwi, hapū hoki, puta noa i te motu.



WĀHANGA AROTAHI 2

Me tautiaki i ngā hua

Me tautiaki ngā rohe kaikonihī-kore, me haere tonu hoki ngā mahi ārai hei tautiaki i ngā momo whakamōrea, me te tautoko tonu i ngā hapori nā te hapori i ārahi ki te kawē tonu i ā rātou mahi.

NGĀ MAHI MATUA

- Me whakapūmau i ngā taumata ārai kaikonihī mā te Kaupapa Ārai Kaikonihī ā-Motu.
- Me tautoko i ngā kaupapa ārai kaikonihī nā te hapori i ārahi, mā te whakapikinga ake o ngā whāngainga rauemi, o ngā pūnaha me ngā utauta kia tūhono ai te whāinga wāhi o te hapori, kia whai painga hoki.
- Me whakapiki te haumarū koiora hei whakaheke i te mōrea me te utu o ngā urutomonga ki ngā moutere kore kaikonihī whāngote me ngā punanga whai taiepa.
- Me whakatupu, me tiri hoki i te mōhiotanga o ngā tāngata e mahi nei ki te whakaora i te taiao.

NGĀ WHĀINGA TŪTOHU

WHĀINGA POTO 3

E tautiaki ana ngā taupori i ngā momo koiora mōrea, ka whakarahia hoki, mā te ārai kaikonihī

- I te whakawhanaketanga tonutanga o ngā ara hou mō te whakarahi i te whakakore ā ngā rā e tū mai nei, ka haere tonu te mahi wawao a Kaikonihī-Kore 2050 i ngā momo whakamōrea mā te ārai kaikonihī.
- Ka kawea tēnei mahi waiwai e ngā rōpū hapori me ngā tūao, ka tino tautokona i te taha o te Kaupapa Ārai Kaikonihī ā-Motu a ngā kaunihera me Te Papa Atawhai, e tautiaki nei i te 20% o ngā whenua tautiaki taiao tūmatanui, e noho nei hoki hei pou matua mō te whakarauora momo whakamōrea.



WĀHANGA AROTAHI 3

Me auaha mō te haepapa

Me kawe whakamua i ngā utauta ngāwari te utu, atawhai i te kararehe, pai ki te iwi mō ngā mahere ka taea te whakaurutau mō te whakakorenga kaikonihī ahuwhānui puta noa i ngā horanuku matahuhua.

NGĀ MAHI MATUA

- Me haere he rangahau whakaarotau nui hei whakakī i ngā āputa mōhiotanga matua.
- Me whakawhanake ētahi utauta, hangarau hou, pai ake hoki mō te kite, te muku me te wawao, me te tūhura tonu i ngā rongoā mō āpōpō, pēnei i ngā hangarau ira.
- Me whakamātau, me auaha hoki ngā kaupapa whakakore arowhānui, momo koiora maha, puta noa i ngā horanuku huhua.
- Me poipoi tētahi ahurea mahi e taea ai e ngā kaipūtaiao, ngā kaiwhakawhanake utauta me ngā mātanga te tuitui i ō rātou pūkenga, tēnā momo, tēnā momo, ōna tirohanga, ōna tirohanga, ki te whakatutuki i ngā pīkauranga nui rawa o Kaikonihī-Kore 2050.

NGĀ WHĀINGA TŪTOHU

WHĀINGA POTO 4

He hohoro kē atu te āheinga ki te wawao i ngā rohe kaikonihī-kore kei urutomongia anō, he ngāwari kē atu hoki te utu

- Kia tutuki rā anō te haepapa ā-motu, ka aroturuki tonu mātou me te whakahaere i te urutomonga anō o ngā kaikonihī ki ngā takiwā kaikonihī-kore.
- E taea ai te kaupapa te whakawhānui ki te motu katoa, me whiwhi painga ake tātou o ngā hangarau hei whakapiki i te wawao taupā, hei whakapiki hoki i te māia ka taea ngā pokanga, te ārai i runga i te hohoro, me te ārai i te urutomonga anō, i te whakaputanga uri rānei.



WĀHANGA AROTAHI 4

Me takatū mō te whakahohoro

Me whakapakari ngā pou hei whakawhānui i te kaupapa mai i te whakakore ā-rohe ki te whakakore ā-motu, kia mārama ngā mahi e mahia ana, ngā utu me ngā painga, me te takatū o te hāpori.

NGĀ MAHI MATUA

- Me ine te kī mā te neke i te ārai pū i te kaikonihī ki te haepapa ā-motu e puta ai he painga pūnaha hauropi, pāpori, ōhanga hoki.
- Me whakawhanake tētahi mahere mārama e uru mai ai ētahi aromatawai utu, utunga hoki mō ngā kitenga whakaputa kōrero ā-ao, e aromātai nei i te takatū o te hāpori, e whakaaro nui nei ki ngā hononga Tiriti, e whakahou nei hoki i ngā rekureihana e tika ana, tae atu ki te whakahaere ngeru mohoao.
- Me whakapakari i te ohu kaimahi mā ngā ara whakawhanake aramahi, tohu mātauranga i āta hangaia, i āta rurukutia hoki.
- Me whakawhanake i te huhua o ngā kōtuitanga wā-roa hei āwhina ā-pūtea i Kaikonihī-Kore 2050.
- Me kawē whakamua te mahi haepapa i ngā moutere whakaaarotau.

NGĀ WHĀINGA TŪTOHU

WHĀINGA POTO 5

Kei te noho kaikonihī-kore tētahi tāone nui o Aotearoa

- He uaua kē atu te whakatutuki i te whakakorenga i ngā rohe tāone tēnā i ngā taiao o te aotūroa. Me mātua tautoko mārika te nuinga o te hāpori, me noho mai he tikanga mahi i āta whakamahinetia, me ētahi utauta me ētahi tikanga mahi pai ki te pāpori.
- Ehara i te mea e pā ana tēnei ki te tāone kotahi anake. E tutuki ai te kaupapa nei, me mātua whai mahere whakakore ngāwari te utu mō ngā painga ka puta, ka taea hoki te urupare mō ētahi atu rohe tāone. Mā tēnei hoki e whakahoki mai te kanorau koiora ki ngā wāhi e noho nei te nuinga o ngā tāngata o Aotearoa, e taea ai e rātou te noho ki roto i ngā painga o tētahi taiao kaikonihī-kore.

Te ara ki tētahi Aotearoa kaikonihī-kore (2030-2050)

Ka urutau te ara ki tētahi Aotearoa kaikonihī-kore i roto i ngā tau, mā te āhua o hihiri o te hikoi, mā ō tātou akoranga i te ara e tārei.

Mā te tutukitanga o ngā whāinga o 2030 – pēnei i te whakanui i ngā painga o ngā mahi a te hapori, te whakaū i te ārainga, te whakawhānui i te kete utauta mā te auahatanga me te hanga takatūtanga haumitanga – e whakamārō te kahupapa hei whakapiki ake i te ahunga whakamua i roto i ngā tau 20 kei mua. Ko tā te atahanga i raro iho nei he whakarārangi i tētahi ara ka taea pea atu i 2030 ki 2050, e kitea ai ka pēhea pea ngā tutukitanga e whāia nei e tātou mō 2030 e wewete ētahi putanga, painga pae tawhiti kē atu i roto i ngā ngahuru tau ka whai i muri i mua i te taenga ki te ao kaikonihī-kore hei te tau 2050.

Hei te tau 2030

Takatū ki te mahi

- Kei te mārama te nuinga o ngā tāngata o Aotearoa, tae atu ki ngā Iwi, ki ngā Hapū me ngā Imi ki Kaikonihī-Kore 2050, ā, kei te tupu te maha o rātou e kawē ana i ētahi mahi hei tautoko i te kitenga.

Me tautiaki i ngā hua

- E tautiaki ana ngā taupori momo koirora mōrea, ka whakarahia hoki, mā te ārai kaikonihī.
- E tautokona ana ngā rōpū hapori me ngā kaupapa ki te tiri i ngā akoranga, kia tomo hoki ki ngā mōhiotanga hou hei whakapiki i ngā putanga.

Me auaha mō te haepapa

- Mā ngā hangarau hou ka puta ake ētahi painga ā-utu kia whakarahia, kia wawaotia hoki ngā taupā o ngā takiwā kaikonihī-kore puta noa i ngā momo whenua maha.
- Kua whakawhanaketia e te iwi Māori ētahi tikanga ārai kaikonihī i takea mai i te mātauranga tuku iho mō ā rātou mahi.
- Mā ngā māunu tāoke rēhita hou ka nui kē atu ngā whakakorenga me ngā haepapatanga ka taea.

Me takatū mō te whakahohoro

- Kua oti ētahi mahere utu ngāwari mō ngā painga ka puta, ka taea hoki te whakaurutau mō te whakakorenga, mō ngā taiao tāone me ngā taiao tuawhenua.
- Ko tā tētahi āhuatanga pakihi kei te kawē i te haumitanga mai i ngā puna huhua, e taea ai ngā āhuatanga nei te whakahohoro puta noa i te motu.
- He kakama, he haratau hoki ngā whakaritenga ture mō Kaikonihī-Kore 2025

Hei te tau 2035

- Kei te kite te nuinga o ngā tāngata o Aotearoa i ngā painga o tētahi taiāo kaikonihī-kore ā-takiwā me te whakaponō ka taea te Kaikonihī-Kore 2050 te whakatinana.

- Ka taea e ngā rōpū hapori me ngā kaupapa ā rātou mahi te whakatūturu, me te aroturuki / tūhono hoki i ngā painga ki Kaikonihī-Kore 2050.

- E tautoko ana tētahi ara auaha i te whakawhanaketanga me te whakamahinetanga o ngā utauta hou, pai ake hoki mō te whakakorenga.

- Kua tino wātea te rohe puiaki o Tiritiri o Te Tonga i ngā kirearea whāngote, nā te tutukinga o Pest Free Maukahuka Auckland Island.
- Kua rite ngā pūmanawa me te raukaha o te ohu kaimahi mō te horanga ki te motu katoa.

Hei te tau 2040

- Kua awahi mai ngā umanga i Kaikonihī-Kore 2050, me te whakaae ki ngā whāinga wāhi ōhanga kei roto.
- Kua whakakorikoringia e Kaikonihī-Kore 2050 te haumitanga ā-motu, ā-ao anō hoki.

- E wawaotia ana ngā rohe i whakakorea, i haepapatia hoki tēnei mea te kaikonihī mā te whakamahi i ngā paerewa haumarutanga koiora mō ngā tikanga mahi pai rawa.

- Nā te whakamahinetanga tonutanga me ngā hua o te mahi matararahi kua tino heke ngā utu o Kaikonihī-Kore 2050.

- Kua rite te pūnaha ture ki te whakawātea i te whakawhānuitanga puta noa i ngā momo purutanga whenua katoa.
- Kāore i iti iho i 5 miriona heketēa o ngā whenua taratahi o Aotearoa (o ngā whenua āhua 8.5 miriona) kua whakakorea, kua haepapatia ōna kaikonihī.
- Kua oti ngā toriura te haepapa i te Moutere o Waiheke, hei whakapūmau i te taunakitanga ariā mō te whakakorenga toriura ā-tāone, ā-tuawhenua hoki, e kore ai e taea te titaritari māunu mai i te rangi.
- Kāore i iti iho i 15 miriona heketēa o ngā whenua tuawhenua me ngā tāone kua whakakorea, kua haepapatia ōna kaikonihī, me te tautoko me te whakaae hoki o aua kaipupuru whenua.

Hei te tau 2045

- Kua whai wāhi te nuinga o ngā tāngata o Aotearoa ki Kaikonihi-Kore 2050.
- E tautoko ana te whakaoranga taiao i te reo, i ngā tikanga me te tukunga iho o te mātauranga Māori me te totohungananga Moriori.
- Ka nuku kē ngā haumitanga ā-Kāwanatanga, o waho hoki i te kāwanatanga mai i te ārai kaikonihi ki te haumarutanga koiora me te kanorau koiora puta noa i te motu.
- Kua tahuri ngā tāngata o Aotearoa ki te kōrero mō te pātai mō te whakamahi i ngā utauta whakahaere ā-ira i tēnei mea te kaikonihi.
- Kei te tuawhiti tonu ngā taupori kākāpō i Rakiura me te tuawhenua anō hoki.
- Kua eke te haepapa kaikonihi i ngā moutere o Aotearoa.
- Kua haepapatia te kaikonihi i ngā heketea 8.5 miriona o ngā whenua taratahi o Aotearoa.
- He huhua ngā tāone nui kei te kaikonihi-kore, me te whai mai anō o ētahi.

Hei te tau 2050

- Kua whānau mai he reanga 'haumarutanga koiora', ahakoa kāore i te matatau ki tēnei mea te kiore, te whānau toriura, te paihamu rānei, engari i a rātou te mōhiotanga me ngā pūkenga hei tautiaki, hei whakahou hoki i te taiao.
- Kei te puāwai ngā mahi tāpoi, me te taetae tonu mai o te manuhiri ki Aotearoa hei whenua kua tū ā-korekore kaikonihi.
- Kua matomato anō ngā ngahere i te itinga o ngā kararehe honihoni rau, kua noho mai anō te mauri i roto, me te hokinga mai o ngā mahi ahurea pēnei i ngā mahinga kai me ngā rongoā, me te pakari anō o te hononga i waenga i ngā pūnaha hauropi me te tangata hauora.
- E noho ana a Aotearoa hei mātāmua mō te whakahaere kaikonihi, ā, he mākete nui tōna mō te hora utauta, tohutohu hoki ki te ao.
- E arotahi ana te nuinga o ngā haumitanga ki te horanga o ngā rohe haepapa puta noa i te tuawhenua o te motu katoa.
- Kua hua ake he whāinga wāhi mō te mahi mā te tangata whenua i roto i te whiwhinga mahi toitū i ngā rohe tuawhenua, tāone hoki, e mahi ai rātou i ngā rāngai pēnei i te haumarutanga koiora me ngā tautiakitanga taonga i tō rātou rohe.
- Kua tata te mahi haepapa ā-tāone whakamutunga i te tāone nui rawa te taupori te whakaoti.
- He nui atu ngā haepapatanga ka tutuki i tēnei wāhanga tēnā i ētahi katoa atu o ngā wāhanga o mua.



He pekapeka e kai ana i te nehu, i te waihonga rānei o Te Pua o Te Rēinga
(*Dactylanthus taylorii*). Whakaahua: © David Mudge, Ngā Manu



PREDATOR FREE 2050
TUIA TE TAIAO

Piri mai ki a mātou kia kaikonihi-kore a Aotearoa

**Tā tēnei rautaki he whakamau noa iho i te ihu
o te waka – engari anō te tutukitanga, mā te hunga
pēnā me koe tērā hei whakakorikori.**

Arā ngā ara mō te katoa kia whai wāhi mai: Peka atu
ki ngā rauemi e whai ake nei kia ako koe me pēhea tō
tautoko i te kaupapa:

- predatorfreenz.org/get-involved
- doc.govt.nz/predator-free-2050

Ka taea e tātou tahi te hanga i tētahi Aotearoa āta tupu,
kaikonihi-kore.



Tāpiritanga

Tāpiritanga 1: Kuputaka

Te whakakorenga

Kua oti katoa ngā kīrearea takitahi o tētahi momo urutomo e noho ana i tētahi wāhi te muku rawa, ā, arā anō ētahi kīrearea e ngana ana ki te hoki ki taua wāhi, engari kāore i te whakaputa uri (arā, 'kāore anō kia whakaputa paiaka').²²

Te haepapa

Kua oti katoa ngā mea takitahi o tētahi hapori o tētahi momo urutomo te muku i tētahi tauwāhi matawhenua i āta tautuhitia mō tētahi wā mōkito i āta tautuhitia.²³

Ngā kaupapa whakakore kaikonihī rahi tonu

He kaupapa e mahi nei ki te hanga taunakitanga ariā mō te whakakore kaikonihī rahi tonu, mō te tini he maha ngā tikanga me ngā hapori pupuru whenua. Ka kapi i te taunakitanga ariā ngā āhuetanga mahi me ngā āhuetanga pāpori o te horanga, kia ako ai a Aotearoa me pēhea te whakakore i te tini o ngā kaikonihī, me te kore e whakamahi taiepa.

Ka taea ēnei kaupapa te ārahi e ngā hapori, e ngā kaunihēra, e ngā lwi, e ngā Hapū me ngā lmi, ā, ka whāngaia ēnei e ngā ratonga kāwanatanga ā-motu, me ētahi atu puna. Ko te tino rerekētanga o ēnei i ngā kaupapa ārai kaikonihī nā te hapori i ārahi ko te aronga o ēnei ki te haepapatanga taketake o ngā kaikonihī, me te hiahia kia whakamātauria ngā ara me ngā taputapu hou e taea ai.

Ngā moutere moana

He moutere ēnei ko te tawhiti poto rawa mai i tētahi tauwāhi o te moutere ki tētahi tauwāhi i te tuawhenua, ki tētahi atu moutere rahi, whai taupori tangata hoki, he neke atu i te 500 mita.

Te ārai kaikonihī

Ko te ārai kaikonihī ko te whakahekenga o ngā taupori kaikonihī ki ngā taumata pāpaku rawa, hei tautiaki i ngā koiora me ngā pūnaha hauropi engari ehara i te haepapa tūturu. I ētahi wā ka kīa tēnei ko te whakatina kaikonihī.

²² Russell JC. 2025. Invasive species eradication standards. Trends in Ecology & Evolution. 40(11):1051–1053. doi.org/10.1016/j.tree.2025.09.002

²³ doi.org/10.1016/j.tree.2025.09.002

Tāpiritanga 2: Rārangi momo ūnga

Kei te rārangi momo ūnga te rārangi o ngā kaikonihī e hiahia ana mātou ki te haepapa atu i Aotearoa hei te 2050. Ko te aronga taea noatia te tau 2030 he whakawhanake i ngā tikanga whakakore, haepapa hoki mō ngā momo maha puta noa i ngā momo whenua maha, kia tutuki ai.

Kei te rārangi momo ūnga ko ngā kiore (te pouhawaiki, te hinamoki me te kiore māori), ngā paihamu me te whānau tori, (te whereti, te toriura, me te wihara), ā, kua whakawhānuitia i roto i tēnei rautaki kia uru mai ngā ngeru mohoa ki te rārangi. I takea mai tēnei panonitanga i te māramatanga he pānga nui tō ēnei momo ki ngā momo koiora māori, me te tautoko o te iwi nui tonu mō tēnei take.

Ko tā te rārangi momo ūnga he whakatakoto aronga mō te hunga e mahi nei ki te whakatika i ngā momo kīrearea urutomo, ā, hei āwhina hoki i te whāinga taputapu hou, tikanga mai hou, hei whakahaere i ngā kaikonihī urutomo i roto i ngā horopaki maha. Hei ārahi hoki tēnei rārangi i te haumitanga ki ngā kaupapa kaikonihī kore e whakamātau nei i ngā ara hou mō te haepapa kaikonihī.

Mā roto i ngā kaupapa Kaikonihī-Kore 2050 (ahakoa nā te hapori, nā te Iwi, nā te Kāwanatanga rānei i ārahi) ka taea te tahuri wawe ki te whakahāngai i ngā mahi ki te kaikonihī, ki ngā momo kaikonihī hāngai ki tō rātou pūnaha hauropi ā-rohe.

Mā ngā haepapa i ngā moutere moana ka tino wātea te whakahāngai i ngā mahi ki ētahi kīrearea whāngote hāngai ki te tutukitanga o ngā pikinga kanorau koiora e hiahiatia ana mō taua moutere – me te mōhio he ngāwari kē atu te muku i te maha kē atu o ngā momo koiora i ngā moutere tēnā i te muku i te whenua katoa.

Tāpiritanga 3: Ngā ngeru mohoa

He tino kaikonihī ngā ngeru mohoa i Aotearoa, arā, he nui tō rātou pānga ki ngā manu māori, ki ngā pekapeka, ki ngā tuaiwi-kore me te whānau mokomoko.²⁴ He kaikawe hoki rātou mō te pirinoa toxoplasmosis (*toxoplasma gondii*), e mōhiotia nei hei take mate rawa mō ngā tūpoupou me ngā popoto, mō ētahi atu koiora māori, me ngā kararehe pāmu.²⁵

Kua riro kē i Te Papa Atawhai Department of Conservation. te whakahaere mō ngā ngeru mohoa i ngā wāhi maha, pēnei i ngā whenua tauraki o te takiwā o Waitaki, hei tautiaki i ngā moko me ngā manu takutai e whakatupu pī nei i ngā wāhi hanga kōhanga o te tahatika. He wāhi nui tonu tō ngā kaunihera ā-rohe i roto i ngā mahi whakatina i te ngeru mohoa. Kua haepapatia te ngeru mohoa i ētahi moutere moana, tae atu ki te moutere o Rangitāhua me Rangitoto.

E tupu tonu ana te tautoko o Aotearoa mō te whakamārō i te whakahaere o te ngeru mohoa.²⁶ He waipuke tonu te tautoko o ngā urupare tūmatanui mō te ngeru mohoa i roto i Kaikonihī-Kore 2050, ā, tērā ētahi petihana kua tae ki te Whare Pāremata mō tēnei take.²⁷

Mā te tāpiri i ngā ngeru mohoa i Aotearoa ki te rārangi momo ūnga ka whakawhanaketia ētahi taputapu, tikanga hou mō te āta whakahaere i tēnei momo i runga i te atawhai, me te hua nui i te mutunga. E whakaū ana anō hoki i te whānuitanga o ngā taunakitanga mō te pānga o te ngeru mohoa ki tō tātou kanorau koiora, me te mōhio ki te kore rātou e whakahāngaitia ka kore ake pea he painga o te muku i ētahi atu momo kaikonihī.

Kia taea ai te ngeru mohoa te whakakore tūturu, me noho mai he tikanga hei ārai i te karoretanga o te ngeru noho kāinga, o te ngeru tipu whenua hoki kei tahuri rātou ki te whakaputa taupori hou. Ka uru ki tēnei te whakawhanaketanga o ētahi ture ā-motu mō te whakahaere ngeru me te whakapiki i te māramatanga o te iwi nui tonu mō ngā tikanga pupuru ngeru whai whakaaro.

²⁴ doc.govt.nz/feral-cats

²⁵ nzncmg.com/toxoplasmosis

²⁶ predatorfreenz.org/wp-content/uploads/2024/06/PFNZ_Final-debrief_2024.pdf

²⁷ www3.parliament.nz/en/pb/sc/submissions-and-advice/document/53SCEN_EVI_102570_EN10039/erica-rowlands, www3.parliament.nz/en/pb/sc/submissions-and-advice/document/54SCPETI_EVI_44dd1ef9-10fc-44b7-1453-08db737e0fe6_PETI2126/jaeger-sims#RelatedAnchor

Tāpiritanga 4: Me mōhio ki te rerekētanga

E toru ngā momo ngeru i Aotearoa – te ngeru noho kāinga, te ngeru tipi whenua me te ngeru mohoa. Ko ngā rerekētanga o ēnei momo ko te wāhi e noho nei aua ngeru me tō rātou piri ki tēnei mea te tangata (e kitea ana i te pikitia i raro iho nei).

He nui tonu te wā ki ngā kaipupuru ngeru whai whakaaro, atawhai ngeru hoki mō te whakatutukitanga i te ao kaikonihikore o āpōpō, e tino tiakina ai ngā ngeru noho kāinga. E tino aroha nuitia ana ngā ngeru noho kāinga mō te 40% ōrau o ngā kāinga noho o Aotearoa, ā, e kore e noho hei ūnga mō ngā mahi kaikonihikore.

Ka taea e ngā kaipupuru ngeru te hāpai i te wāhi ki a rātou kia whakahekea ngā pānga ki ngā koiora māori, mā te tipoka i ō rātou ngeru, te hoatu mōtete iti ki roto, te pupuru haumarua hoki i te kāinga i tētahi 'catio', arā, i tētahi wāhi o waho kua oti te whakataiepa mō te ngeru.

Mā konei ka kore te ngeru noho kāinga kāore i te hiahiatia e noho hei ara rerenga mō ētahi atu taupori ngeru tipihenua, ngeru mohoa hoki ā ngā rā kei mua.

Know the Difference - Companion, Stray & Feral Cats

There are three types of cats in New Zealand - companion, stray, and feral. The difference between these types of cats is based on where they live and their relationship with people.



AVOIDS PEOPLE

FERAL CATS
Do not live among people and do not rely on them for their welfare needs.

LIVES WITH PEOPLE

COMPANION CATS
Are owned, have a home with people, and depend on people for their welfare needs.

LIVES NEAR OR AMONGST PEOPLE

STRAY CATS
Live near or sometimes amongst humans but are not owned. They vary in how much they depend on people for their welfare needs. Some are friendly, some are not.

For more information, go to: <https://www.spcanewzealand.org.nz/advice-and-welfare/article/know-the-difference-companion-stray-and-feral-cats>

Pikitia: SPCA New Zealand

Tāpiritanga 5: Rārangi rangahau

Ko ngā mauhi me ngā tuatete ngā kaikonihī whāngote iti i kawea mai i tāwāhi e rua anake e toe ana,, kāore i te rārangi momo ūnga o Kaikonihī-Kore 2050, engari he pānga nui ō ēnei ki ngā koiora māori, otirā he tino mōrearea ki ngā taupori whānau mokomoko, tuaiwi-kore hoki mōrea, tae atu ki te wētā. E noho tonu ana ngā āwangawanga ki te noho tonu ēnei i te taiao ka tino heke pea ngā kokenga whakamua kua tutuki i roto i te Kaikonihī-Kore 2050, inarā i muri i te mukunga o ētahi atu momo koiora.²⁸ Nā reira me āta titiro ki te whakahaerenga o ēnei momo koiora hei wāhi o Kaikonihī-Kore 2050.

Me ako tātou i ētahi atu mea mō ēnei kaikonihī e rua, he pēhea hoki tō rāua tauwhiti ki ētahi atu momo koiora – inarā kia oti katoa ētahi atu kaikonihī o tō rātou pūnaha hauropi te muku atu. Mā te whakanoho mai i ngā mauhi me ngā tuatete hei wāhanga o te rārangi rangahau mō Kaikonihī-Kore 2050 ka mārara kē atu tātou ki tō rātou pānga ki ngā momo koiora māori, me tō rātou urupare ki te mukunga o ētahi atu kaikonihī, ka taea hoki tā tātou whakawhanake utauta, tikanga hoki mō te whakahaere i ēnei momo i runga i te atawhai, me te whai hua hoki o ngā mahi, me te whakahaere whakatau ā ngā rā kei mua mō te tāpiri ki te rārangi momo ūnga.

²⁸ Norbury G et al. 2024. Insights paper: analysis of the target pest species for Predator Free 2050. Contract Report: LC4544. He mea taka mā Te Papa Atawhai. Te Whanga-nui-a-Tara: Manaaki Whenua – Landcare Research. doc.govt.nz/globalassets/documents/conservation/threats-and-impacts/pf2050/insights-paper-analysis-of-the-target-pest-species-for-predator-free-2050.pdf



**Te Kāwanatanga
o Aotearoa**
New Zealand Government