



Clown nudibranch (*Ceratosoma amoenum*). Photo: Vincent Zintzen

## Why we have marine reserves

In the same way that national parks protect species and habitats on land, marine reserves protect coastal and marine species and habitats. As these are 'no take' areas, plant and animal communities can flourish, and these precious taonga (treasures) are protected for all to enjoy now and in the future. Te Paepae o Aotea is a small but important piece in a network of marine reserves. It is part of a national goal of increasing the amount of New Zealand's marine environment that is under some type of formal protection.

## Looking after the marine reserve

The Department of Conservation manages Te Paepae o Aotea (Volkner Rocks) Marine Reserve. To uphold the values of the marine reserve surveillance and enforcement is undertaken by DOC with the assistance of others. Failure to comply with the Marine Reserves Act, 1971 may result in prosecution.



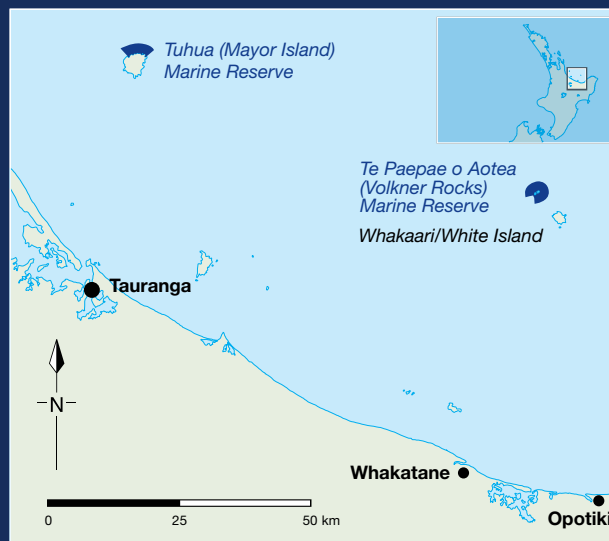
Cushion star (*Patiriella regularis*). Photo: Vincent Zintzen

## How to get there

Te Paepae o Aotea (Volkner Rocks) Marine Reserve is located 55 km offshore from Whakatane.

For many people the most convenient and ready access to the marine reserve may be by charter boat.

Diving or sightseeing excursions can be arranged through a number of operators.



## Further information

Department of Conservation  
Whakatane Office  
1/100 Valley Road  
Whakatane 3120

Phone: (07) 307 2770

Email: [opotiki@doc.govt.nz](mailto:opotiki@doc.govt.nz)

**DOC HOTline**  
**0800 362 468**

Report any safety hazards  
or conservation emergencies  
For Fire and Search and Rescue Call 111

Cover image:

Te Paepae o Aotea stack. Photo: White Island Tours

Published by:

Department of Conservation, Whakatane Office  
1/100 Valley Road, Whakatane 3120, New Zealand

April 2015

Editing and design:

Publishing Team, DOC National Office

This publication is produced using paper sourced from well-managed, renewable and legally logged forests.

# Te Paepae o Aotea (Volkner Rocks) Marine Reserve

BAY OF PLENTY



New Zealand Government

Department of  
Conservation  
Te Papa Atawhai



Blue-eyed triplefin (*Notoclinops segmentatus*). Photo: Vincent Zintzen

## Te Paepae o Aotea Marine Reserve

Te Paepae o Aotea (Volkner Rocks) Marine Reserve was established in October 2006, and is 55 km offshore from Whakatane. The 1267 ha reserve possesses outstanding natural and ecological features of international significance.

### Why this area is important

The rock pinnacles rise from the sea floor 400 m below, creating a wide range of habitats.

The reserve is affected by oceanic, deepwater influences. It lies in the path of the warm east Auckland current that sweeps down from subtropical regions north of New Zealand. This combined with clear water provides unique conditions that support a wide range of marine diversity, including the rare fire brick starfish, diadema urchin, Spanish lobster and packhorse crayfish.

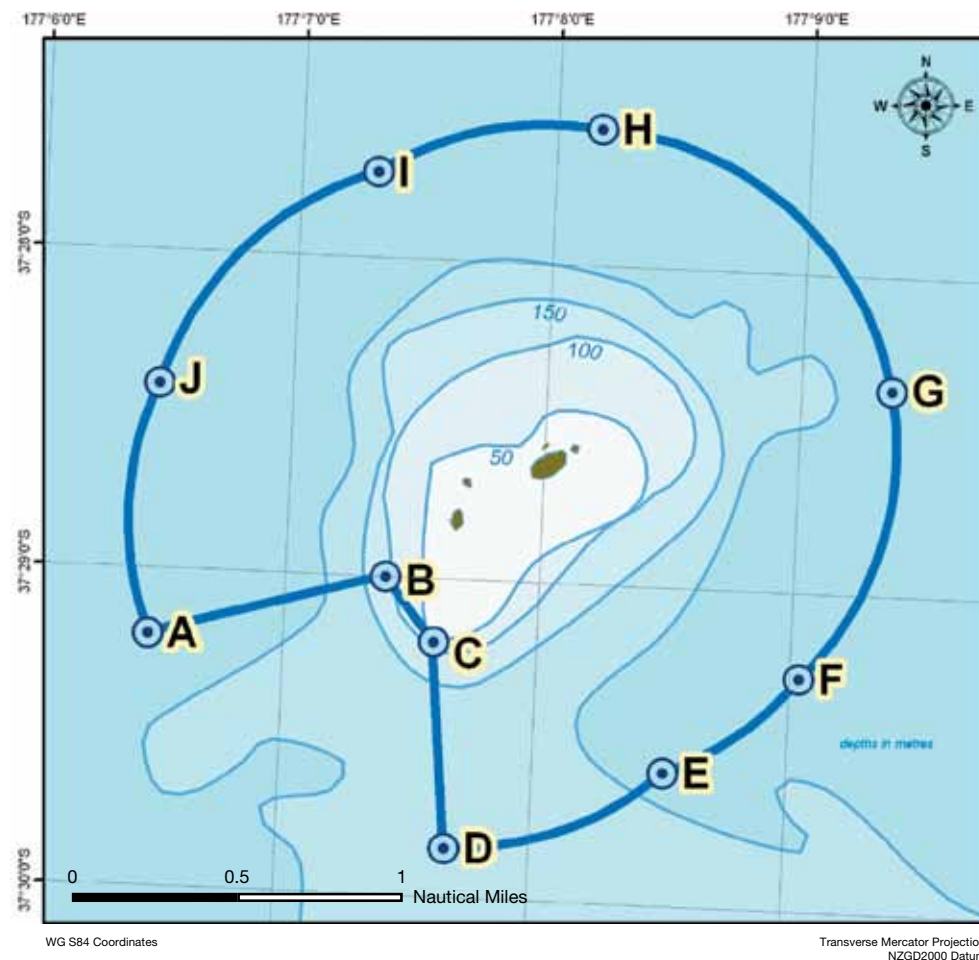
### A significant place for tangata whenua

Te Paepae o Aotea is a place of great significance to Ngāti Āwa and other iwi of the Mātaatua waka. It is the departure place for the spirits of all people from Mātaatua iwi. Spirits linger here, leaving the physical world and reuniting with the souls of the departed. A long time ago Polynesian travellers used this landmark as a guide to show the land they sought was close. Te Paepae o Aotea is an important part of local heritage.

### Te Paepae o Aotea (Volkner Rocks) Marine Reserve boundaries

	LATITUDE	LONGITUDE
A	37 29.208 S	177 06.475 E
B	37 29.000 S	177 07.400 E
C	37 29.200 S	177 07.600 E
D	37 29.845 S	177 07.675 E
E	37 29.580 S	177 08.524 E
F	37 29.268 S	177 09.045 E
G	37 28.356 S	177 09.362 E
H	37 27.568 S	177 08.180 E
I	37 27.732 S	177 07.305 E
J	37 28.420 S	177 06.480 E

Note: This map is for information only, it has not been prepared for legal, engineering or surveying purposes. Users of this information should review or consult the primary data and information sources to ascertain the usability of the information.



In the marine reserve you are invited to enjoy diving and snorkeling, sailing, and power boating. You are entitled to anchor your boat within the reserve.



The following restrictions apply in the marine reserve: no fishing, netting or taking of marine life.



NEW ZEALAND  
**water**  
CARE CODE  
*Toitū te marae ā Tāne*  
*Toitū te marae ā Tangaroa*

Find out first

Take care of your gear

Remove rubbish

Dispose of toilet waste properly

Be careful with chemicals

Respect our cultural heritage

Consider plants and animals

Consider other people