

Figure 6a: Scaled length frequencies of fish caught during R.V. Kaharoa trawl surveys within the survey area, 1982-2000. n, number of fish measured.

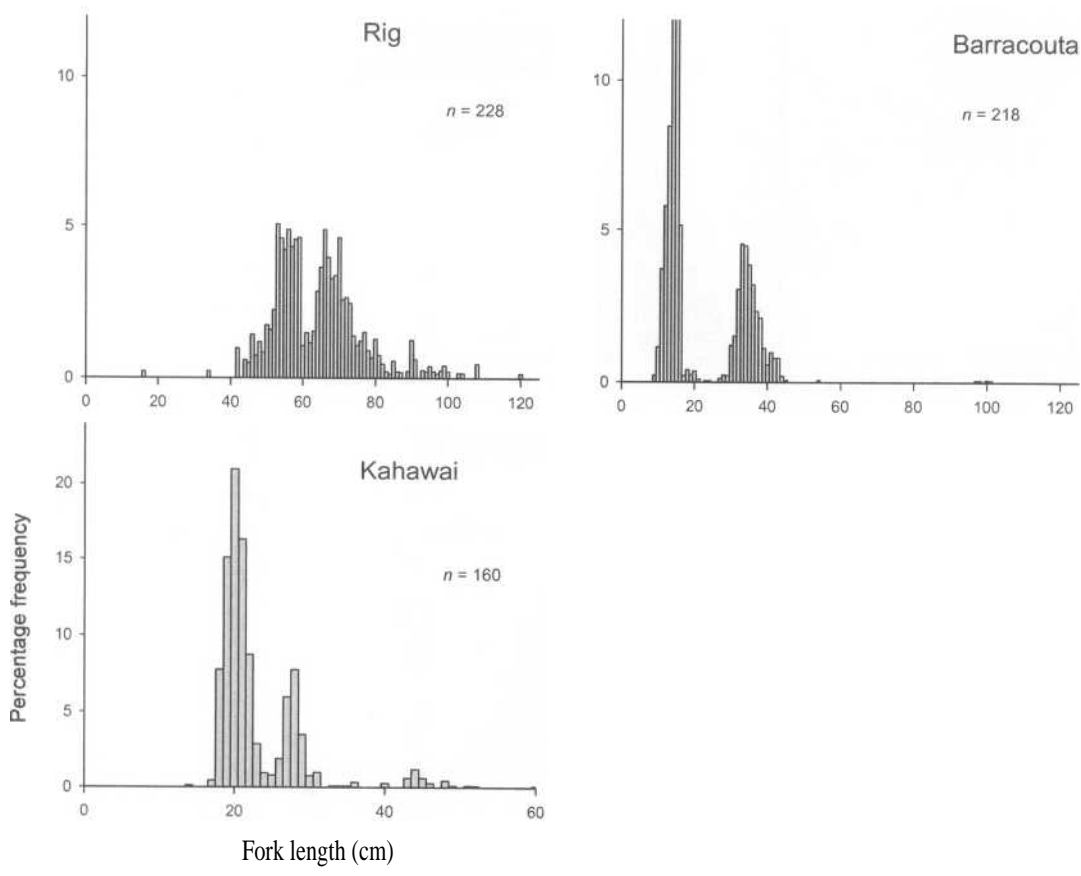


Figure 66 continued.

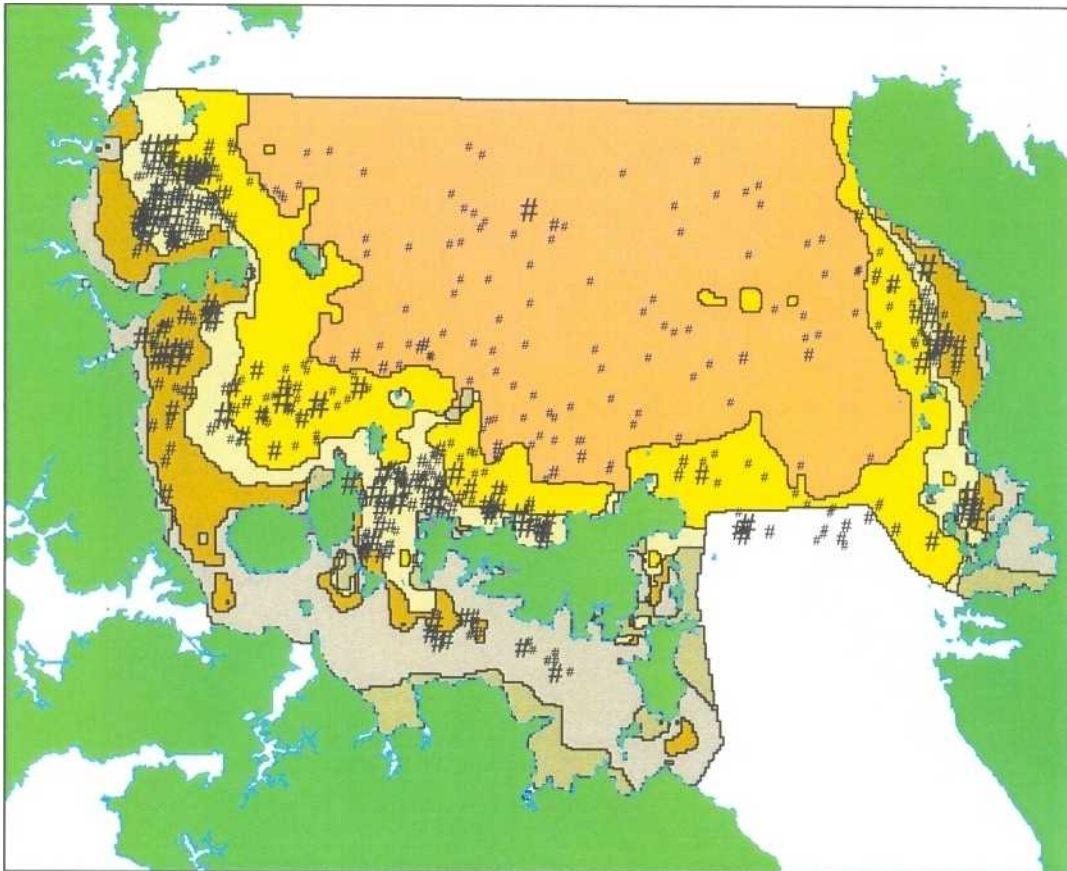


Figure 7: Snapper trawl survey abundance, 1982 - 2000, overlaid on acoustic class background

Fish per km2	
·	0
#	1 - 4 999
#	5 000 - 9 999
#	10 000 - 19 999
#	20 000 - 29 999
#	> 30 000

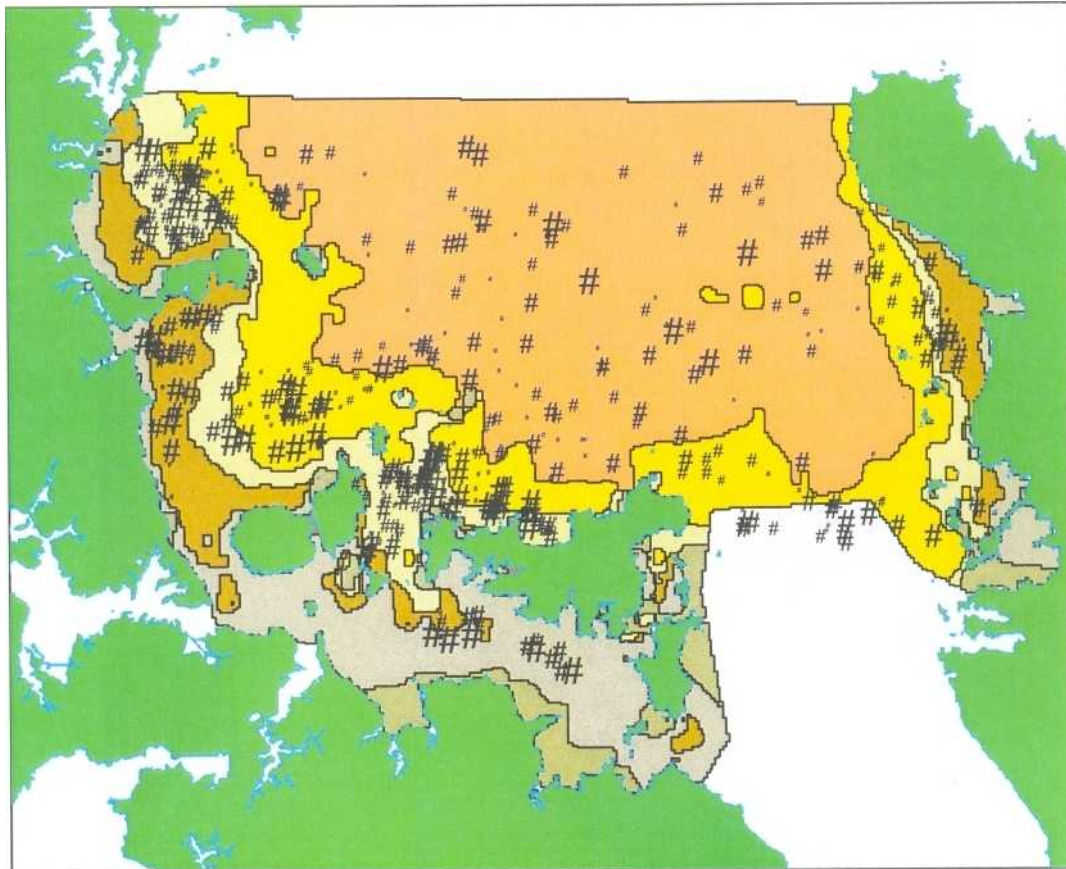


Figure 8: Jack mackerel trawl survey abundance, 1982 - 2000, overlaid on acoustic class background

Fish per km <sup>2</sup>	
·	0
#	1 - 99
#	100 - 999
#	1 000 - 4 999
#	5 000 - 9 999
#	> 10 000

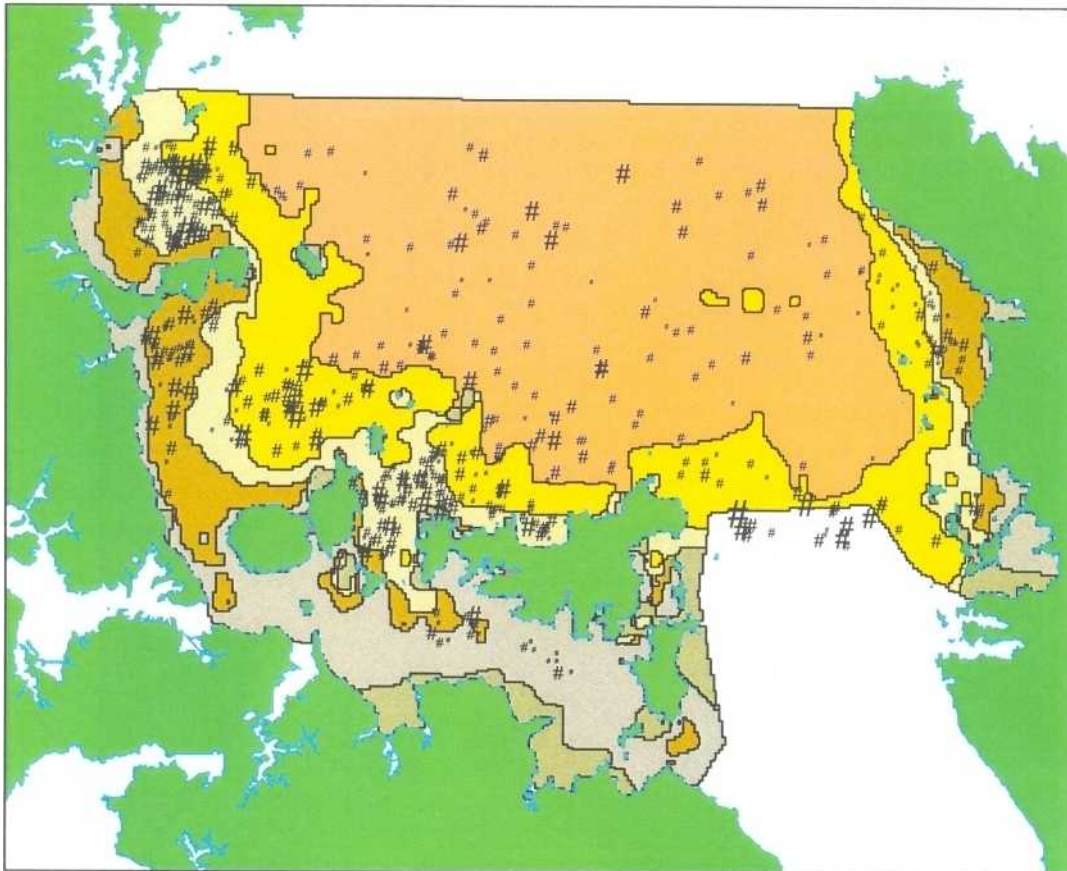


Figure 9: John dory trawl survey abundance, 1982 - 2000, overlaid on acoustic class background.

Fish per km <sup>2</sup>	
·	0
#	1 - 49
##	50 - 99
###	100 - 249
####	250 - 499
#####	> 500

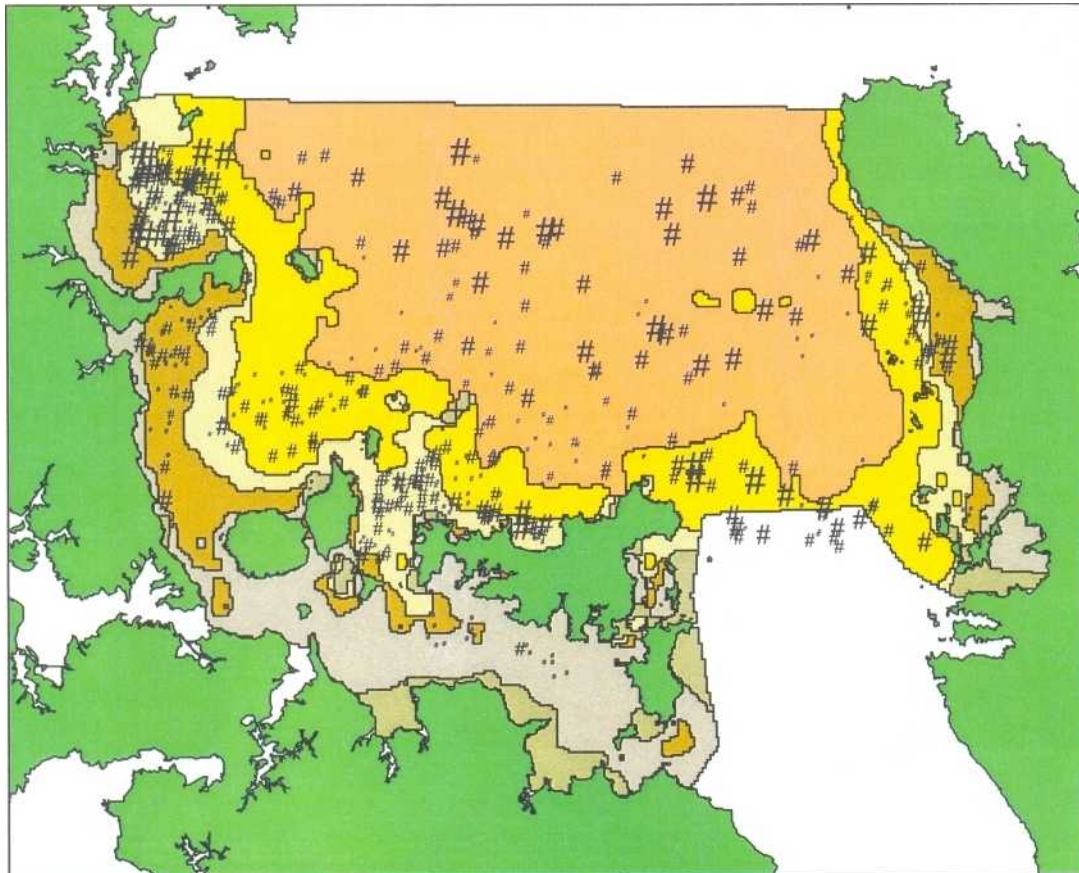


Figure 10: Red gurnard trawl survey abundance, 1982 - 2000, overlaid on acoustic class background

Fish per km2	
.	0
#	1 - 9
##	10 - 99
###	100 - 199
####	200 - 499
#####	> 500