

# Identifying New Zealand Mollymawks

## SMALLER ALBATROSSES

The *Thalassarche* albatrosses, sometimes known as mollymawks, are considerably smaller than the great albatrosses. The following guide is to help you identify any mollymawks you may encounter.



Blue/grey bill  
with yellow tip



New Zealand  
white-capped  
albatross

XWM

### Distinguishing characteristics

- Larger-sized
- White head

### Wingspan

180 – 256 cm

Yellow/grey bill  
with dark tip



Salvin's  
albatross

XSA

### Distinguishing characteristics

- Larger-sized
- Mid-grey head and white crown

### Wingspan

256 cm

Chrome yellow bill  
with dark tip



Chatham Island  
albatross

XCI

### Distinguishing characteristics

- Medium-sized
- Darker grey head
- Most common around the Chatham Rise

### Wingspan

220 cm



## Yellow/orange bill (XKM)

Yellow eyes



Image: Scott Brooks

Black eyes



Image: © M. P. Pierre

### Campbell albatross

XCM

#### Distinguishing characteristics

- Larger-sized
- White head with black eyebrows
- More common in summer

#### Wingspan

250 cm



Image: Tui De Roy, Roving Tortoise Photos

### Southern black-browed albatross

XSM

#### Distinguishing characteristics

- Larger-sized
- White head with black patch around eye
- More common in winter

#### Wingspan

210 – 250 cm



Image: Lea McQuillan

## Black and yellow bill

Yellow stripe is broad at base of bill



Image: Traveller MG

### Southern and Northern Buller's (Pacific) albatross

XPB

#### Distinguishing characteristics

- Medium-sized
- Grey head and neck with white-ish crown

#### Wingspan

213 cm



Image: Harold Stiver

Yellow stripe tapers at base of bill

RARE



Image: Paul Sagar

### Grey-headed albatross

XGM

#### Distinguishing characteristics

- Medium-sized
- Grey head and neck

#### Wingspan

220 cm

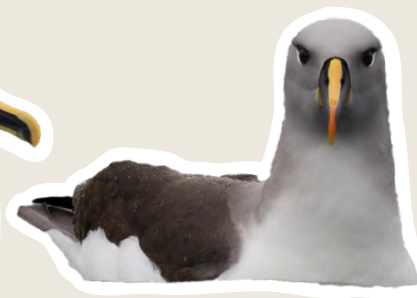


Image: © Ric Else

## Dark bill with pale blue stripe

RARE



Image: Agami Photo Agency

### Light-mantled sooty albatross

XLM

#### Distinguishing characteristics

- Medium-sized
- Dark brown body and head with greyish neck and back
- White eye ring

#### Wingspan

220 cm



Image: Ian Parker