

Campbell Island Seabirds

Operation Endurance March 2020

Claudia Mischler

BCBC2019-03

25 June 2020



Department of
Conservation
Te Papa Atawhai

New Zealand Government

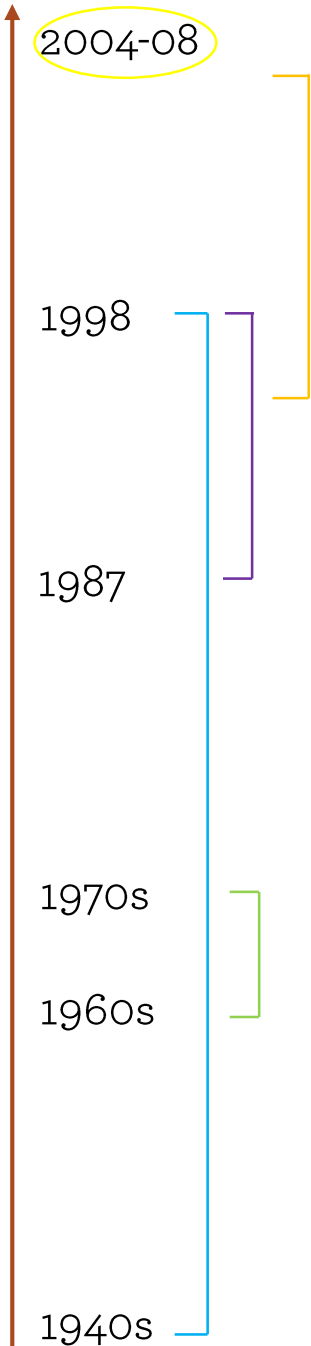
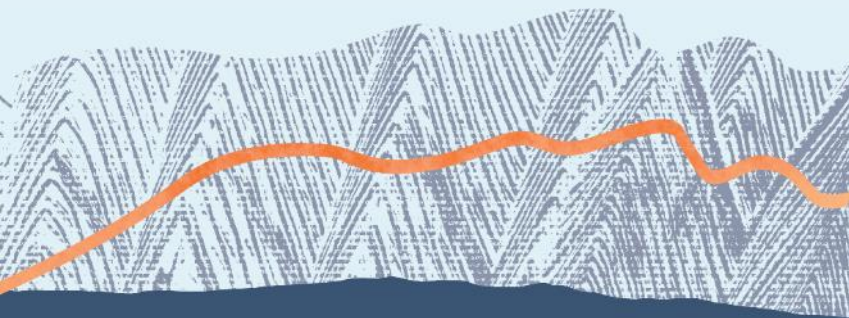


Trip Duration and Objectives

- Total trip 11 days – less than 5 full days on the island
- Southern royal albatross:
 - Resight banded birds and scan for PIT tags
 - Recovery of GLS devices from Col study area
 - Assess population trend through updated study and index area counts (Col study area and Honey index area)
- Assess Campbell and grey-headed albatross breeding success
- Assess abundance and distribution of burrowing petrels with sound recorders



Southern royal albatross – banding history



> 35,000 birds banded

Most of banding

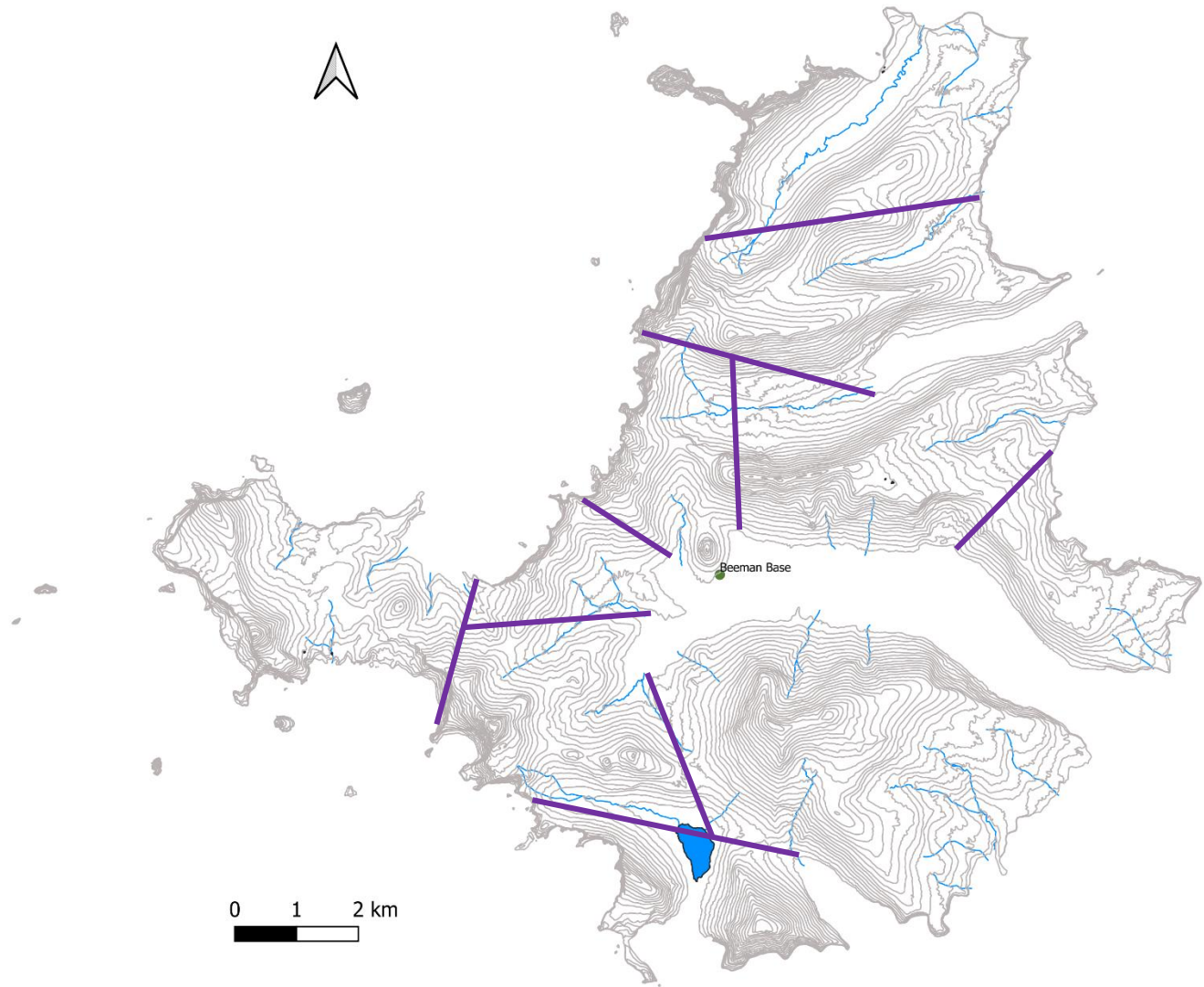
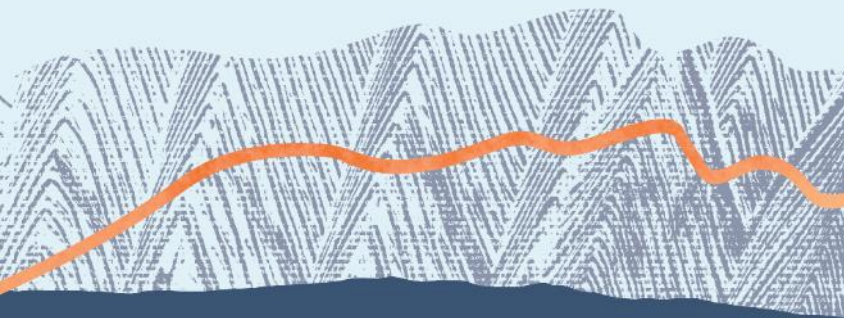
Banding restricted to two study areas

Injuries noted

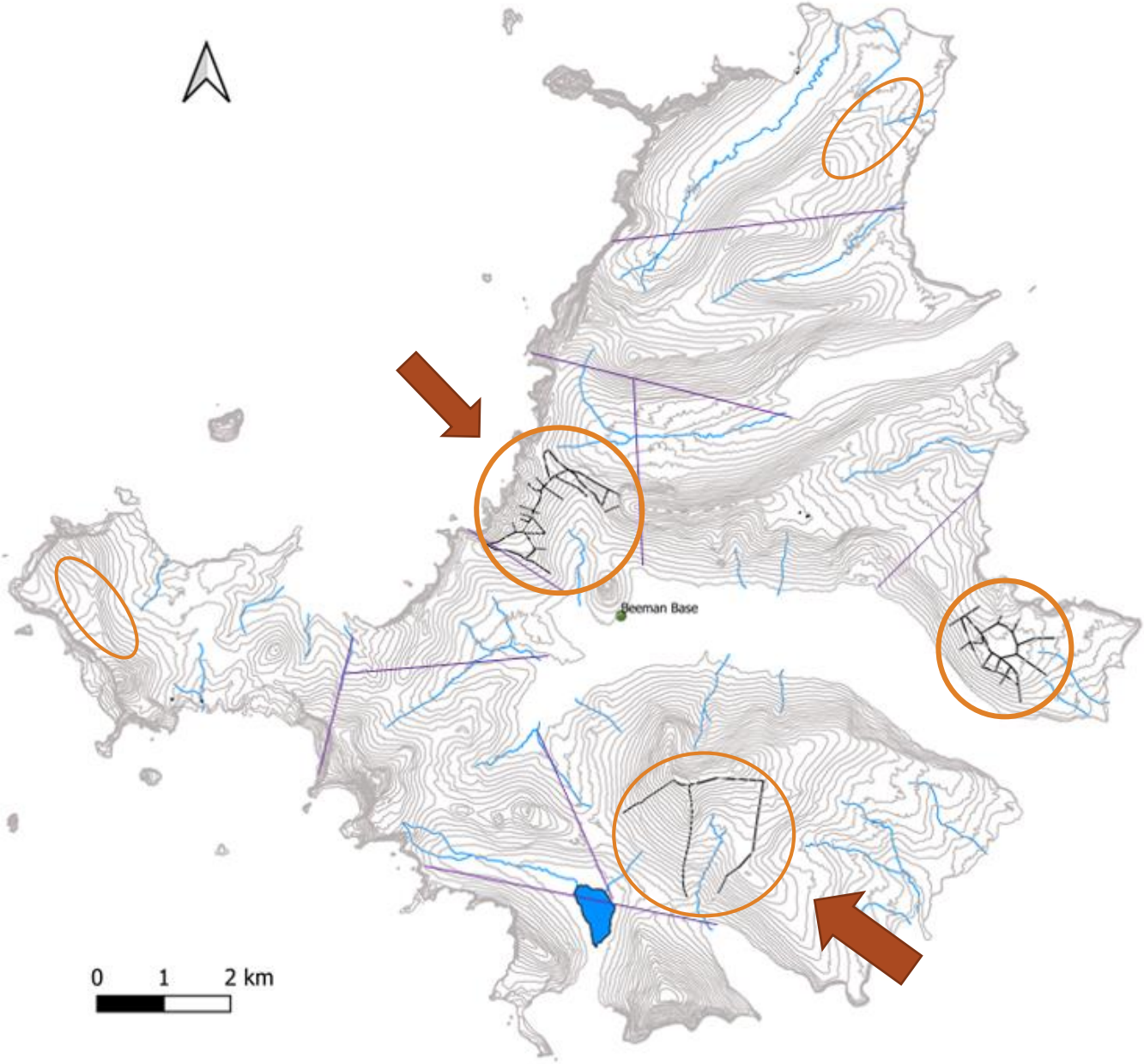
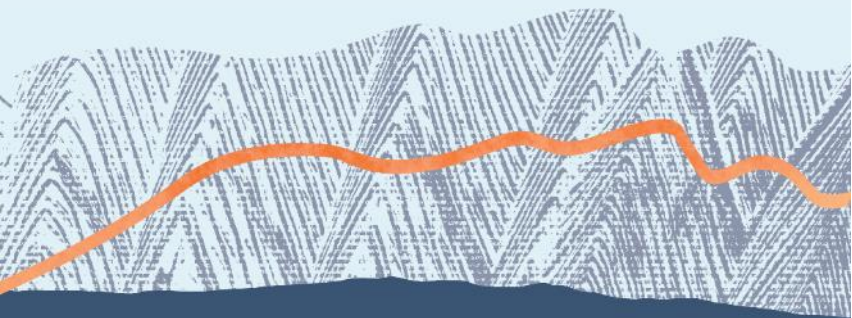
Band removal and census



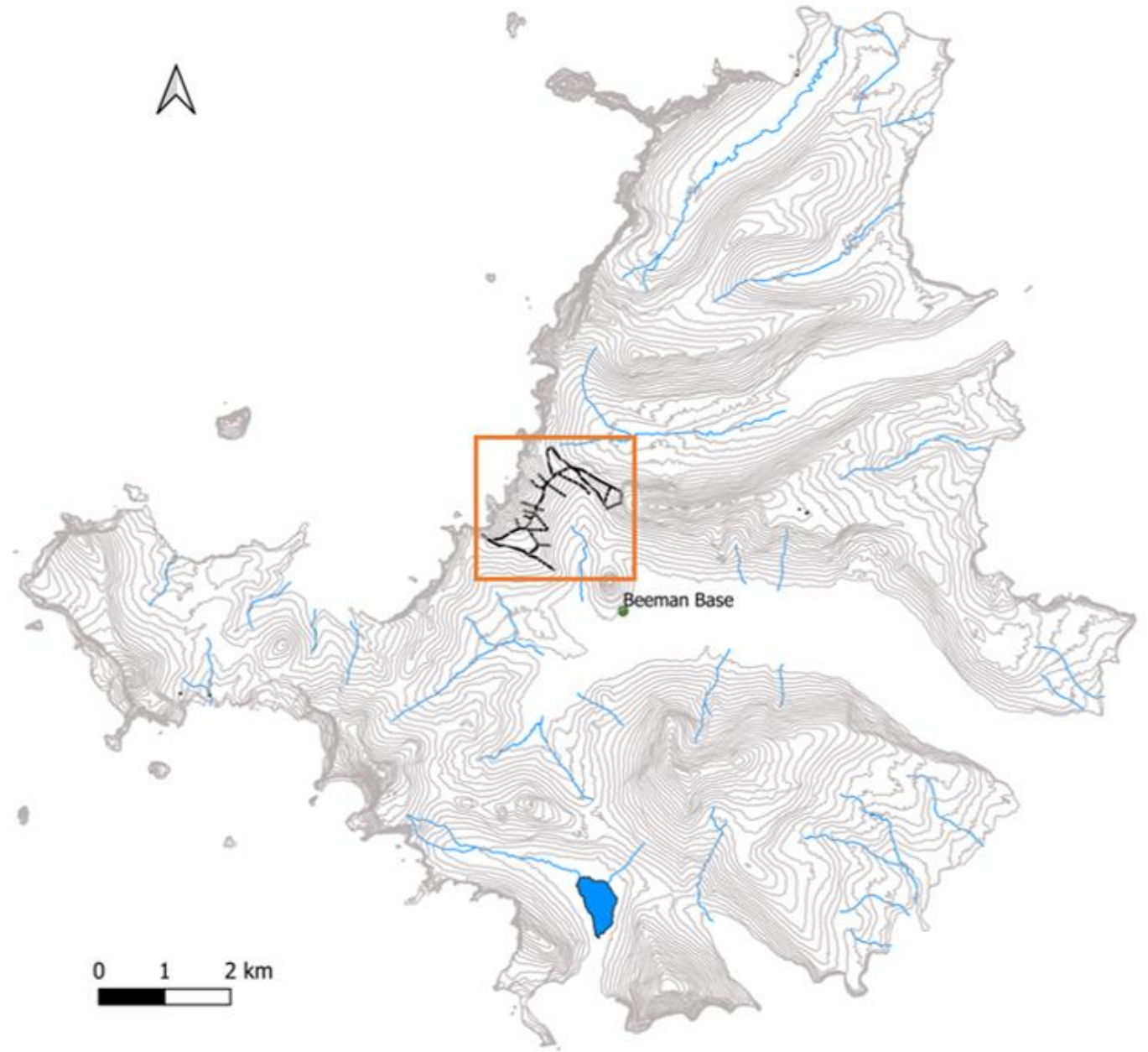
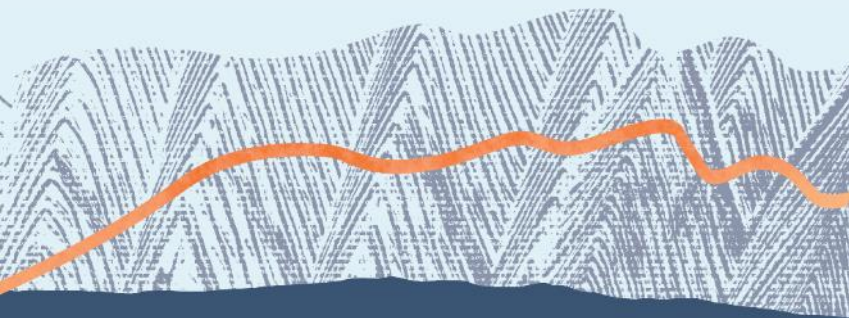
Southern royal albatross – count history



Southern royal albatross - history

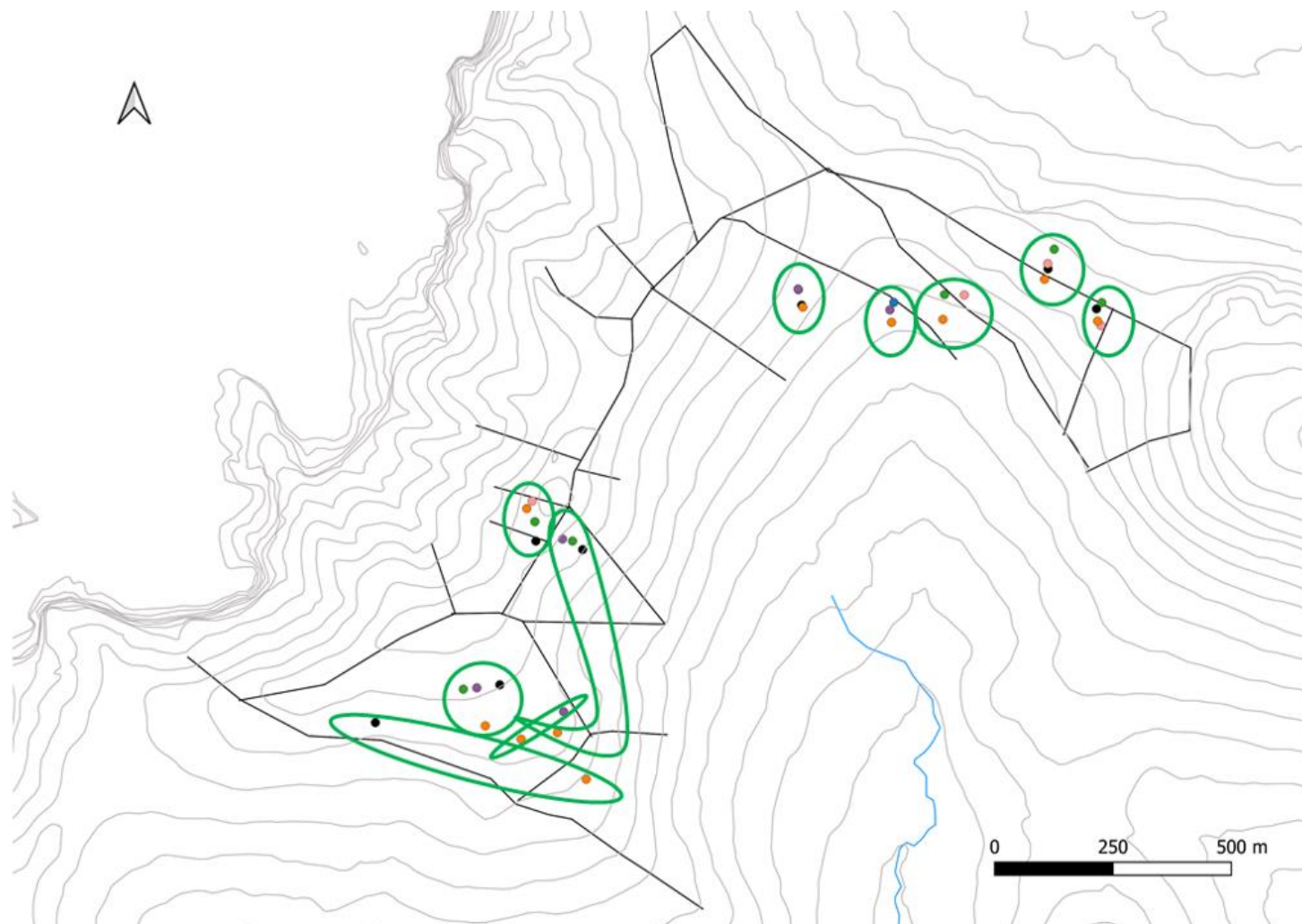


Southern royal albatross – Col study area

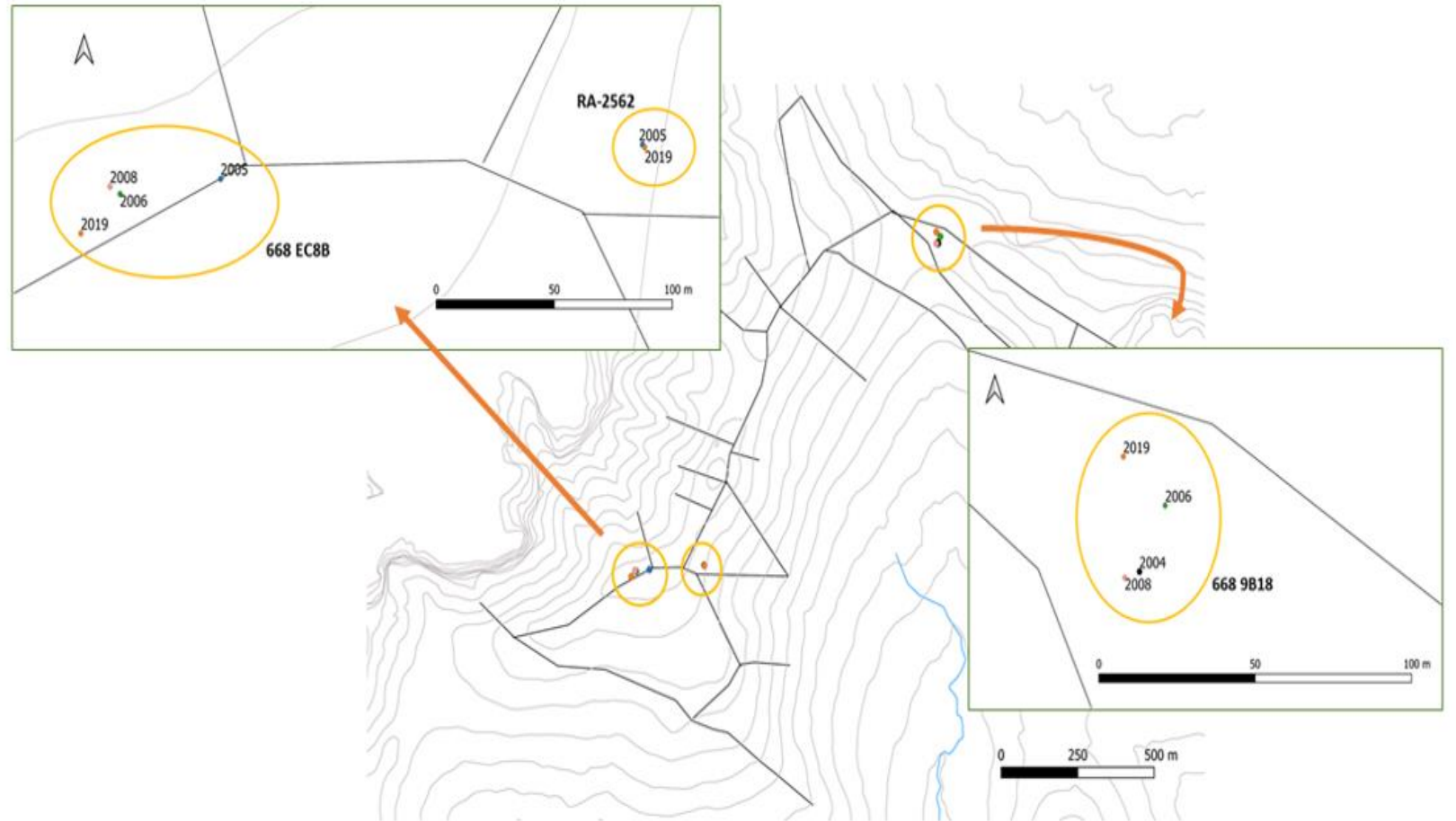


Southern royal albatross – band resights, PIT tags, and GLS retrieval

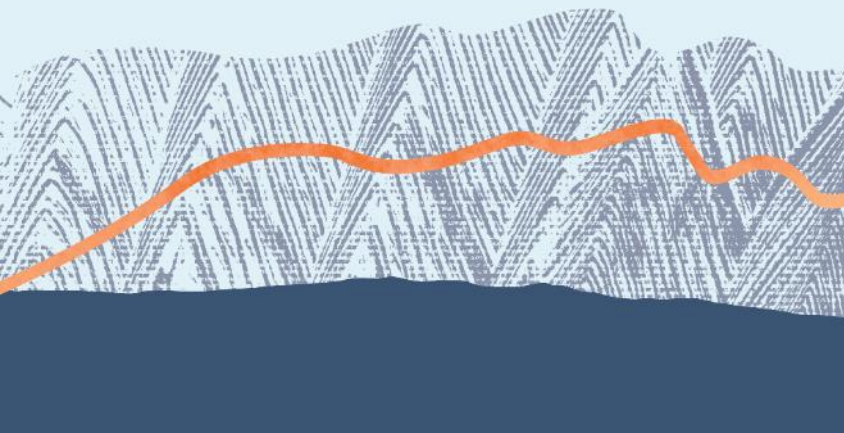
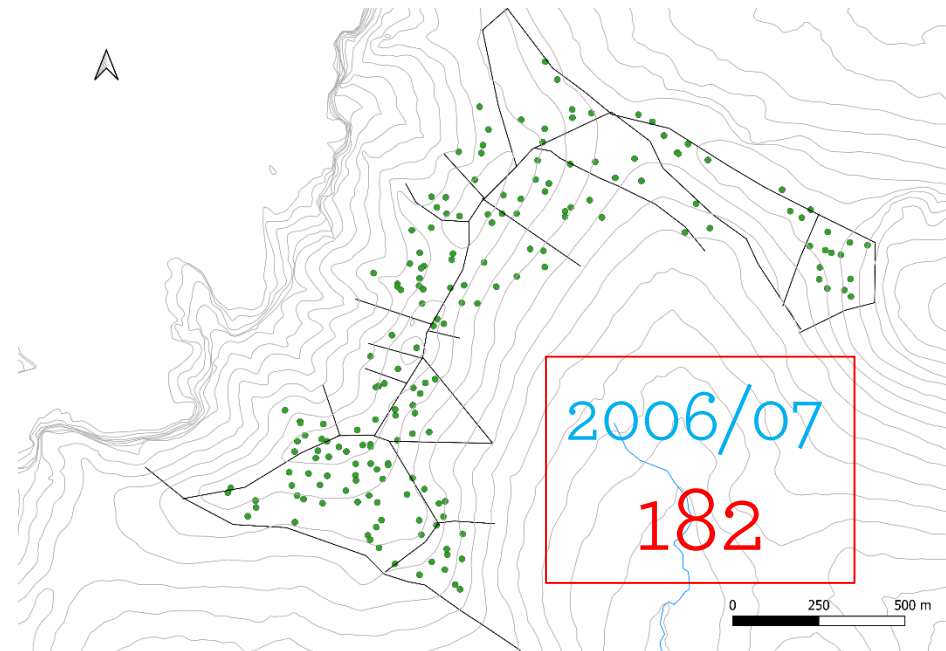
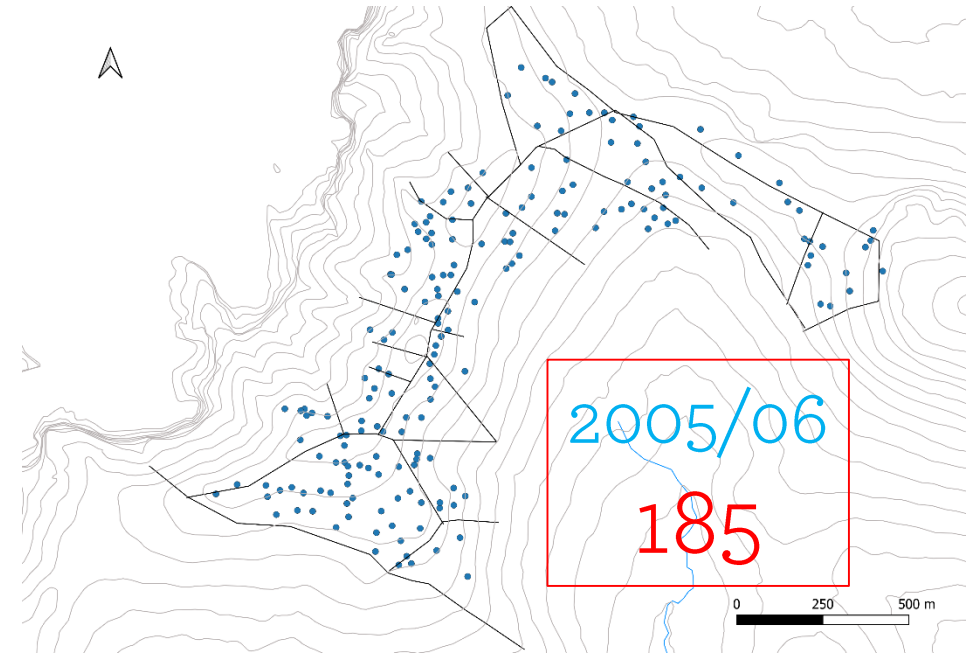
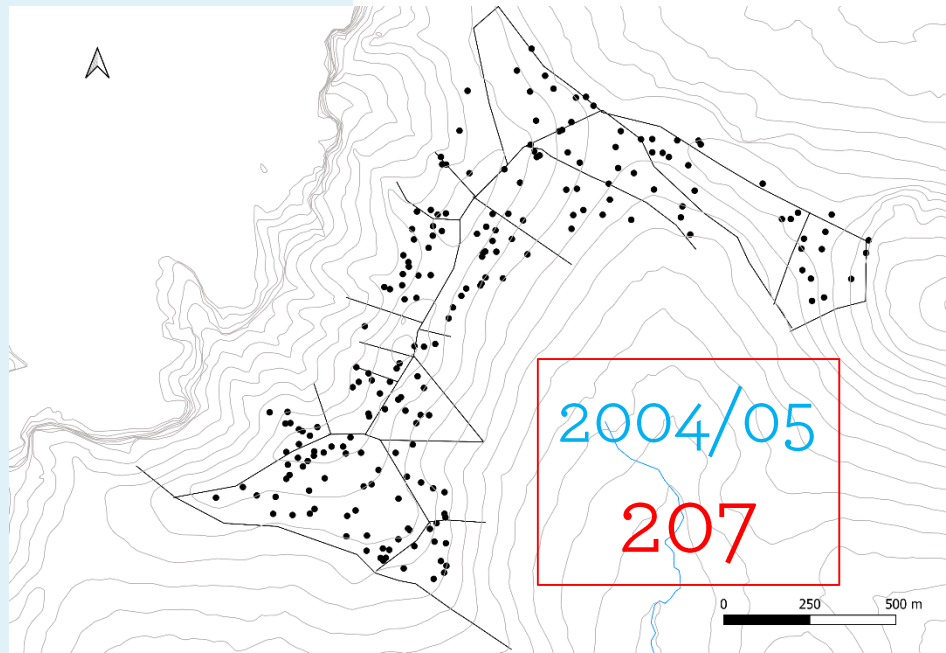
- 13 total banded birds (2 males, 11 females)
- 2 PIT tagged males
- One GLS



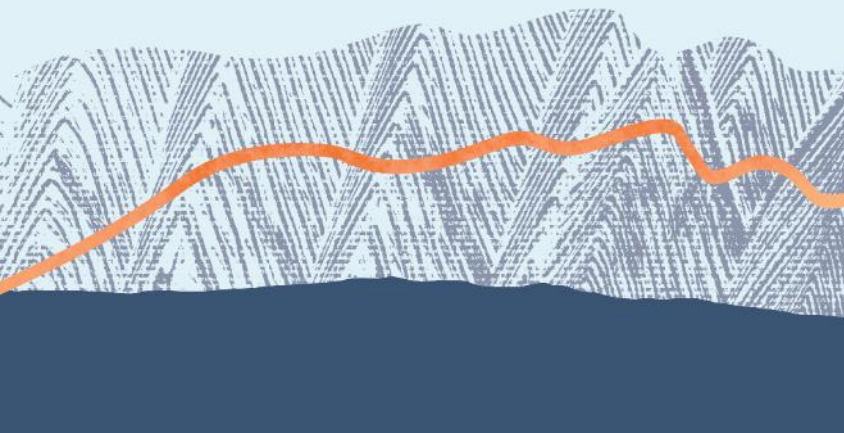
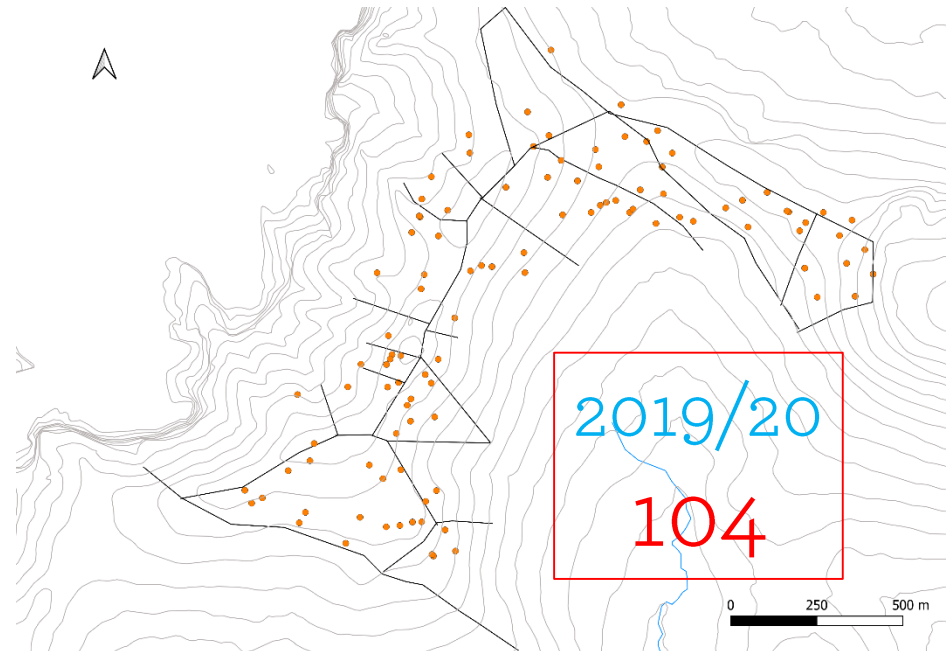
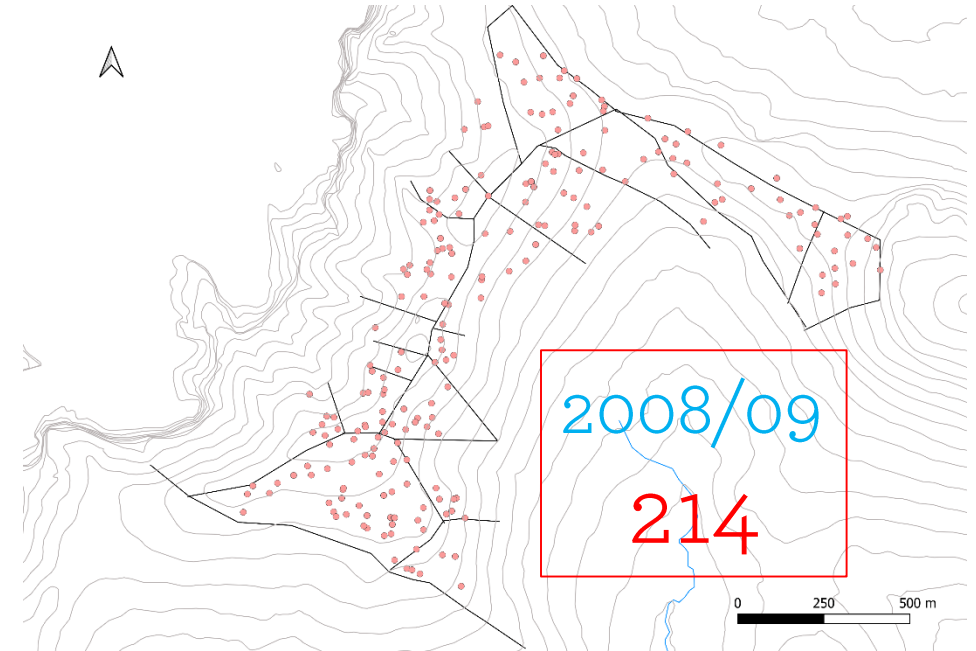
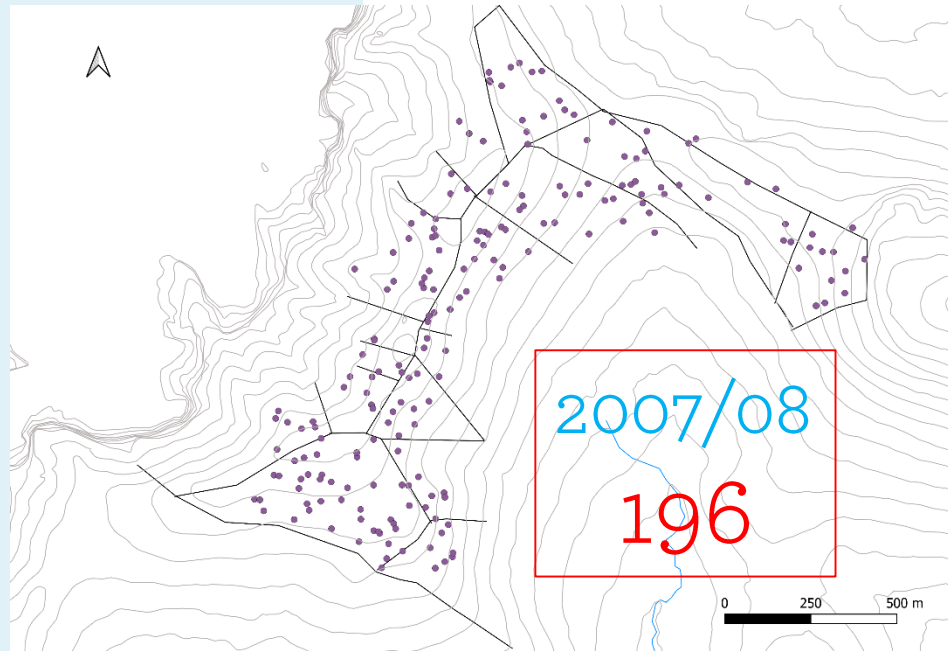
Southern royal albatross – band resights, PIT tags, and GLS retrieval



Southern royal albatross – Col nest counts



Southern royal albatross – Col nest counts



Southern royal albatross – Col hatching success

Season	Hatch Success	Mean ± S.D.
1964/65	78.4%	76.4 ± 4.2
1966/67	71.0%	
1969/70	79.8%	
1988/89	76.6%	70.9 ± 4.3
2004/05	73.1%	
2005/06	74.5%	
2006/07	71.1%	
2007/08	64.8%	
Overall	Range 64.8-79.8%	Mean 73.7 ± 4.8

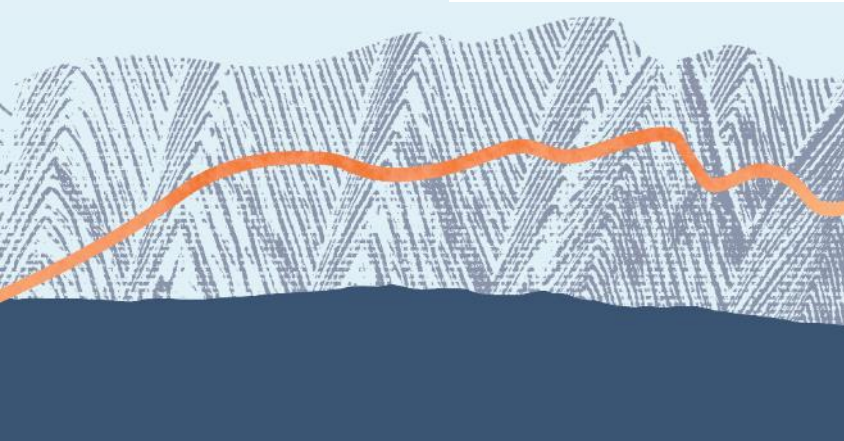
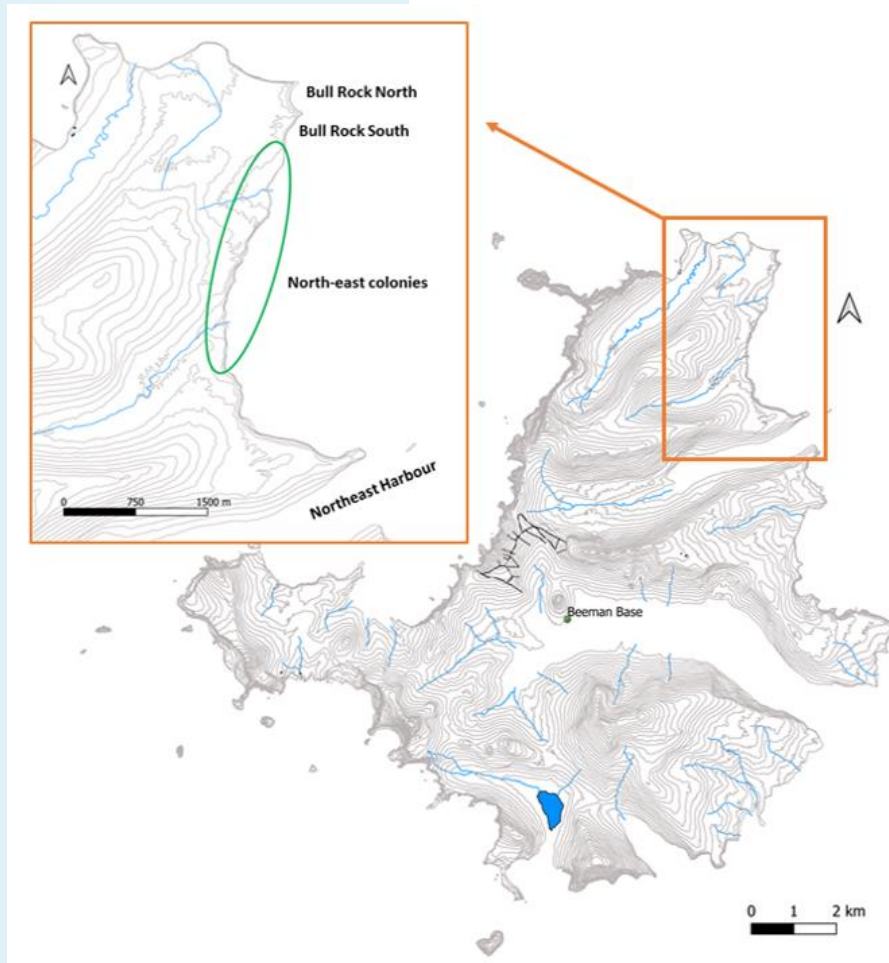
104 counted nests – estimated 141 nests

Southern royal albatross – priorities

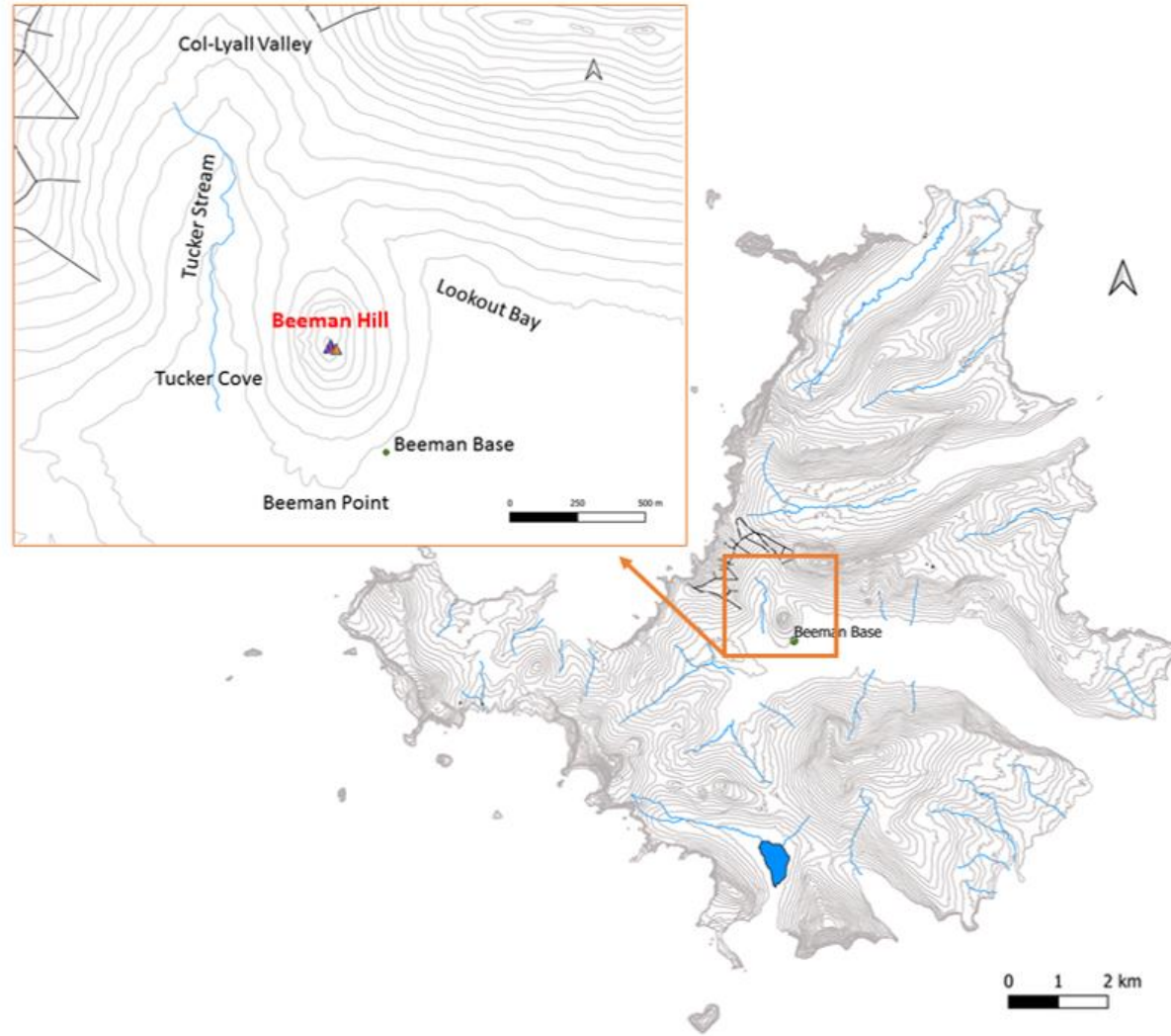
- Increase monitoring and counts
- Identify problem areas



Campbell and grey-headed albatross - breeding success



Burrowing petrel abundance and distribution



Dave Boyle

Acknowledgements

- HMNZS *Canterbury* and staff
- DOC Marine Species and Threats Funding
- Igor Debski, Graeme Taylor, Kalinka Rexer-Huber, Graham Parker, DOC Invercargill, Sharon Trainor, and James Ware for pre- and post-trip support
- Chris Page, Mark Symons, Phil Clerke for field assistance
- Robbie Miller and Dale Chittenden for support during trip
- Zach Taylor and Dillon Anderson for mollymawk photos

