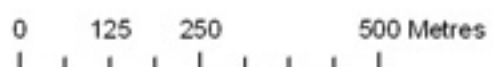
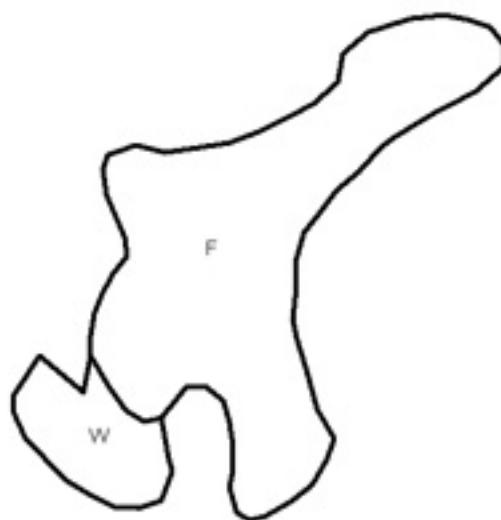
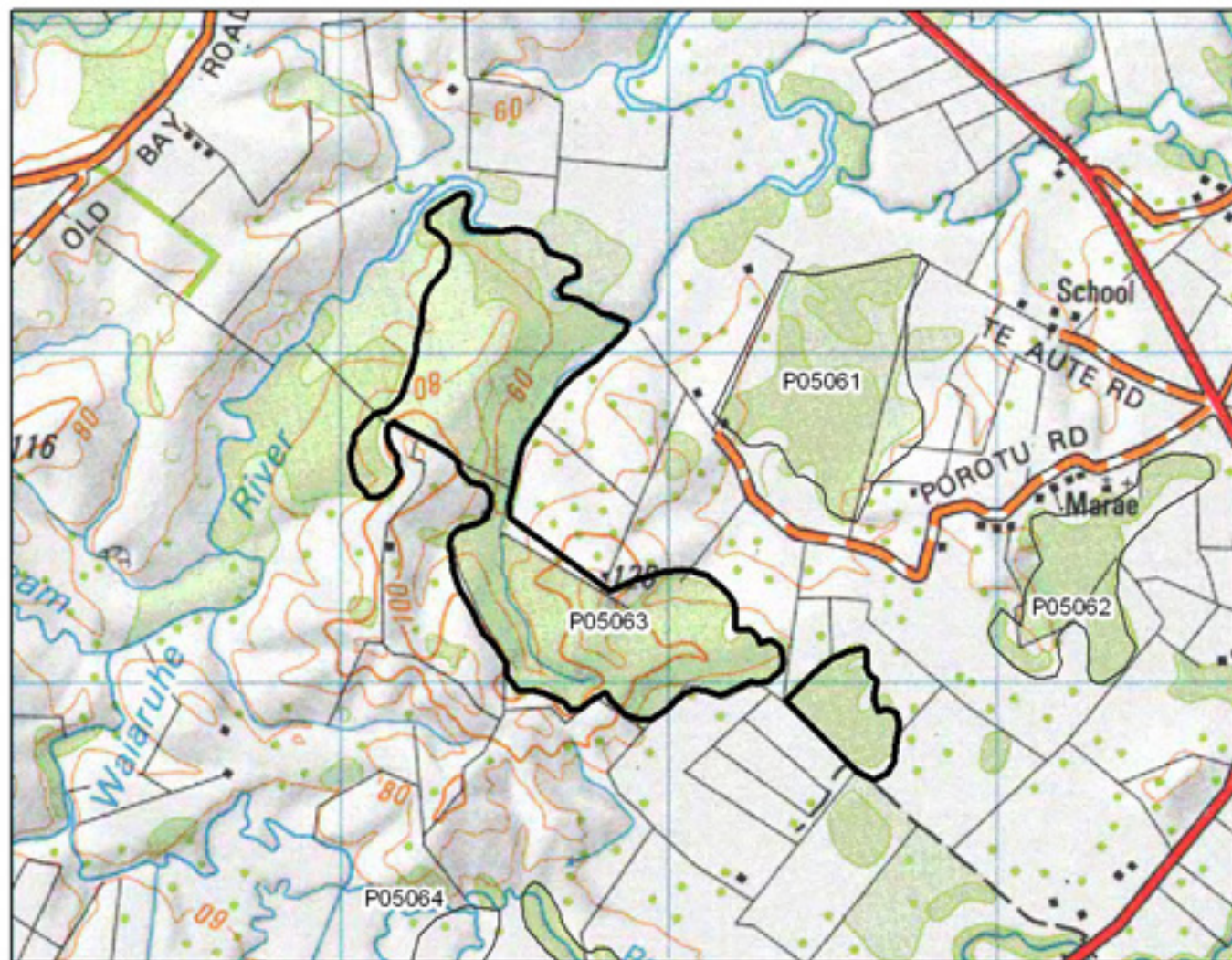


P05062 Porotu Road Swamp and Environs

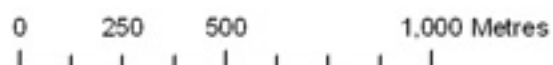


- S= Shrubland
- F= Forest
- W= Wetland
- E= Estuarine

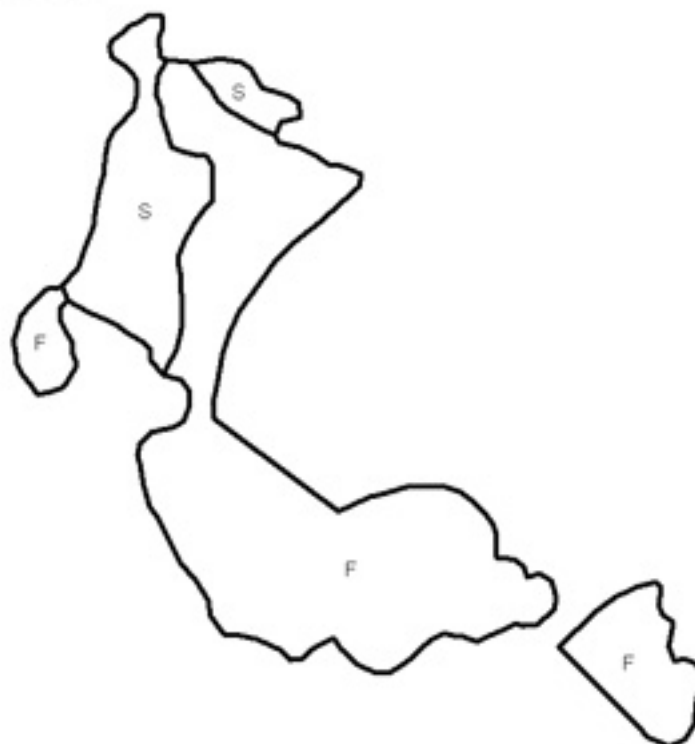


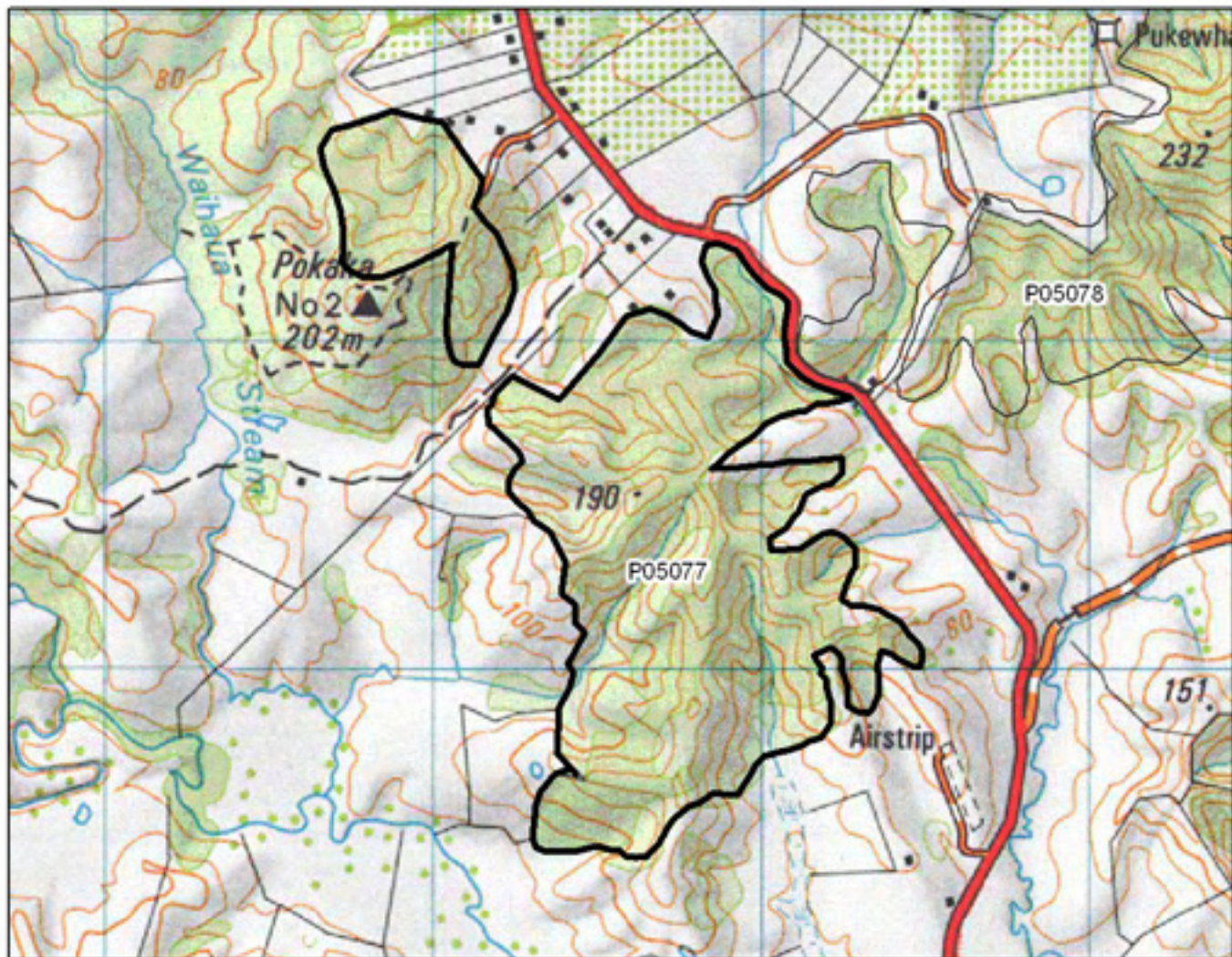


P05063 Oromahoe Bush



- S= Shrubland
- F= Forest
- W= Wetland
- E= Estuarine



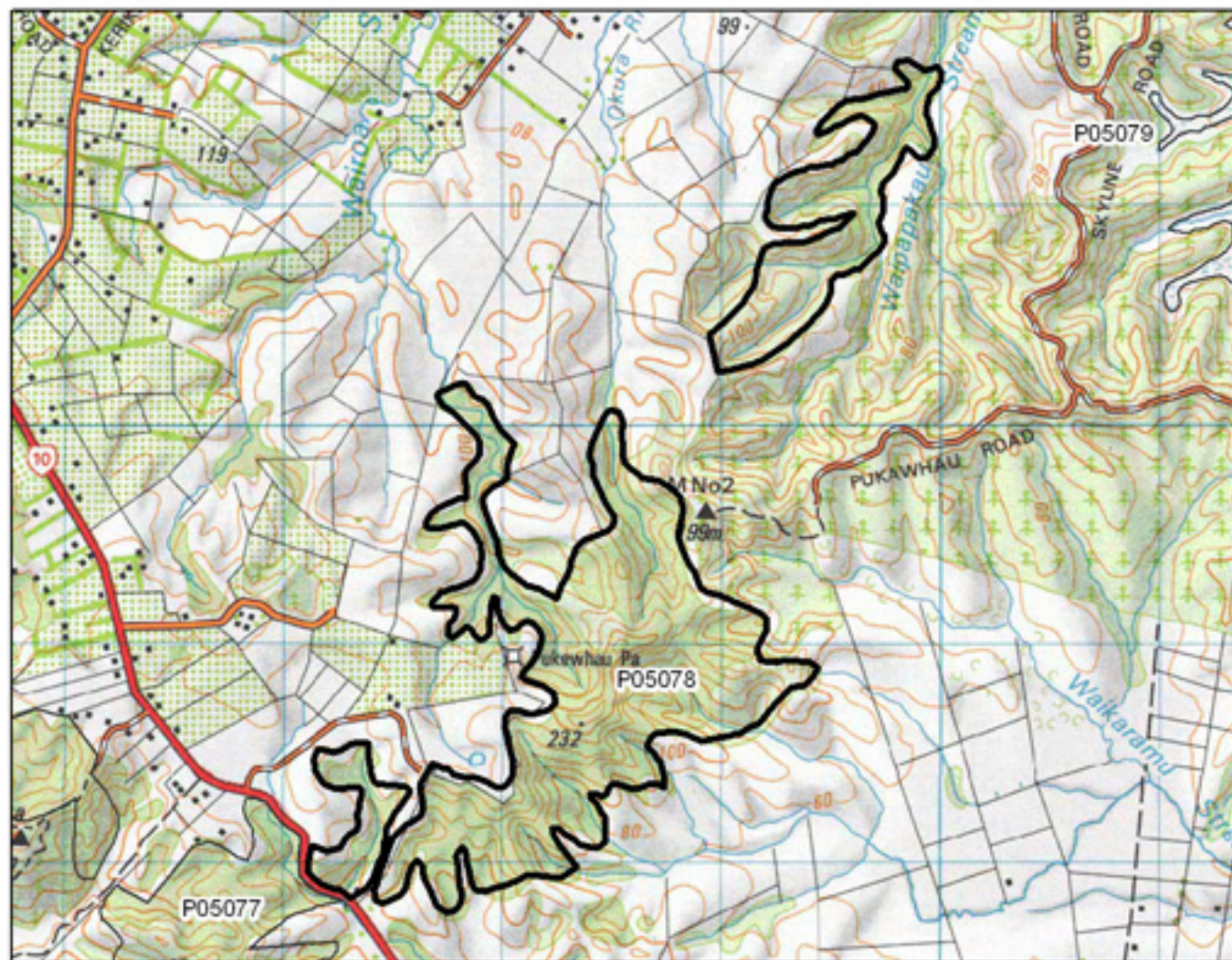


P05077 Puketona Reserve



- S= Shrubland
- F= Forest
- W= Wetland
- E= Estuarine



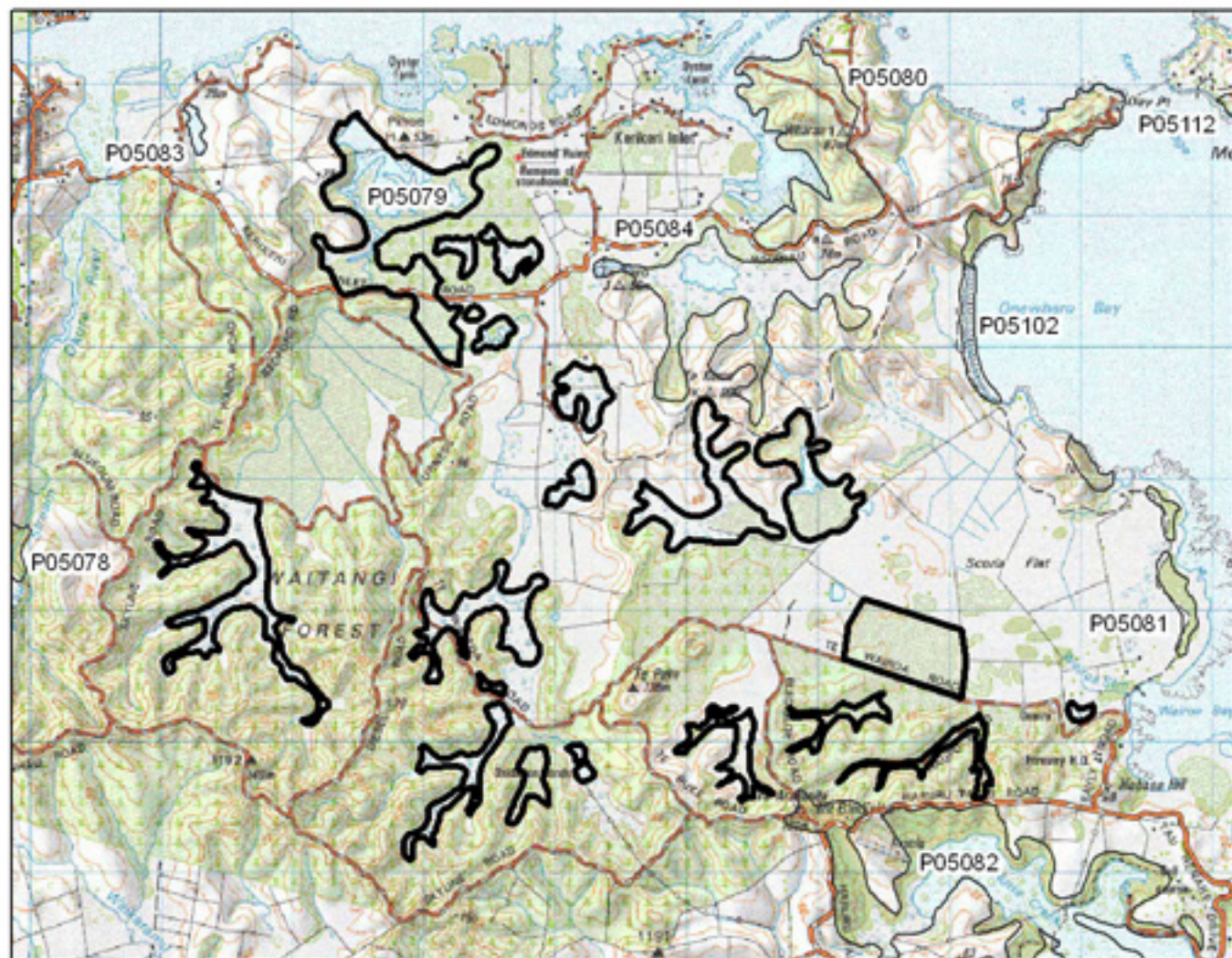


P05078 Pukewhau

0 375 750 1,500 Metres

S= Shrubland
 F= Forest
 W= Wetland
 E= Estuarine



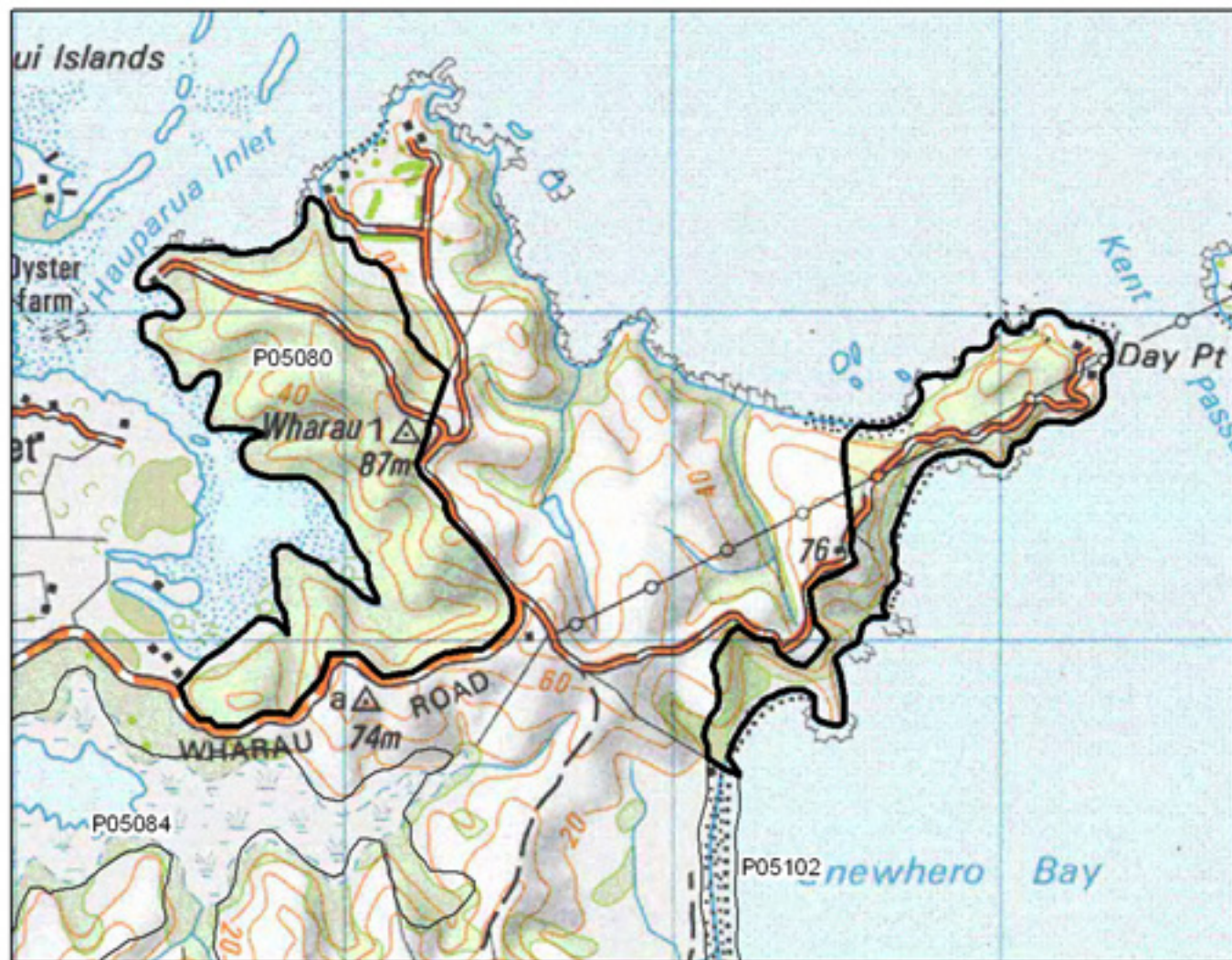


P05079 Waitangi Wetlands and Environs

0 500 1,000 2,000 Metres

S= Shrubland
 F= Forest
 W= Wetland
 E= Estuarine





P05080 Day Point and Wharau Shrublands

0 250 500 1,000 Metres

S= Shrubland
 F= Forest
 W= Wetland
 E= Estuarine

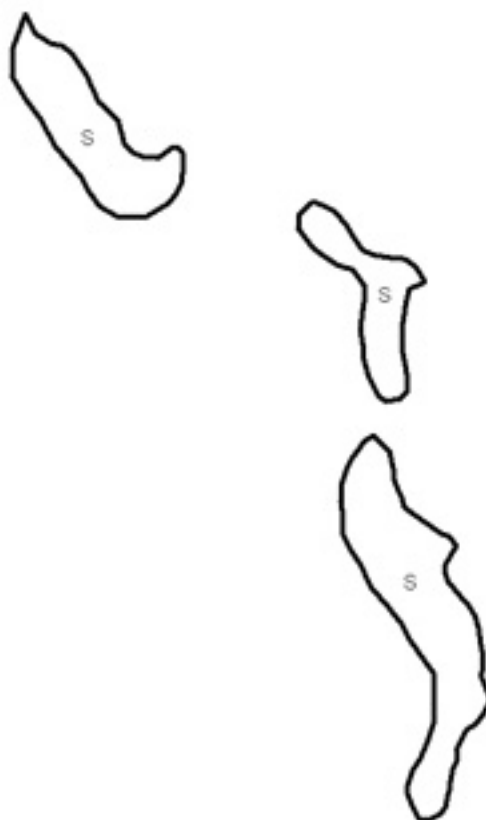


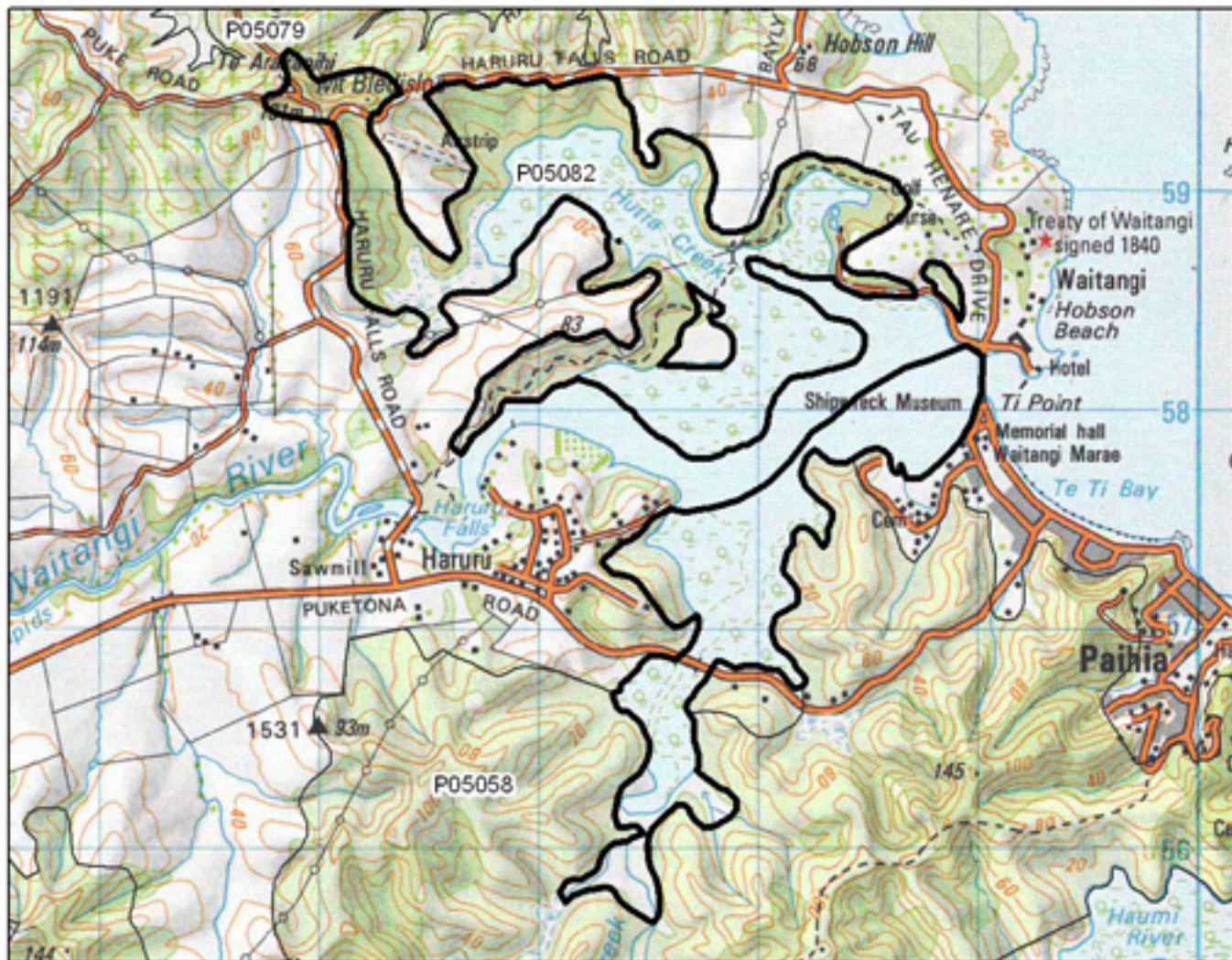


P05081 Brampton Shoal Bush

0 187.5 375 750 Metres

S= Shrubland
 F= Forest
 W= Wetland
 E= Estuarine



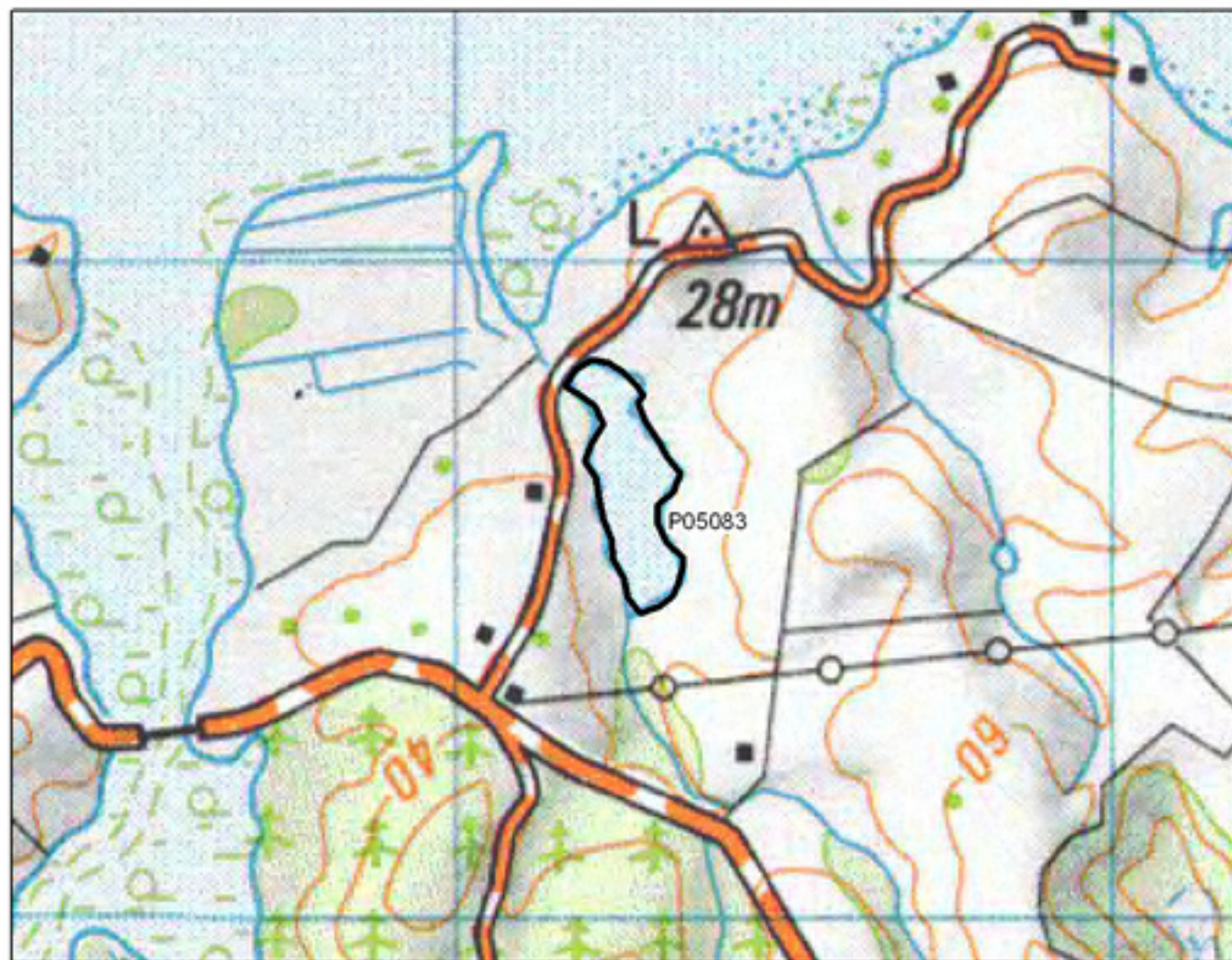


P05082 Hutia Creek Coastal Shrublands

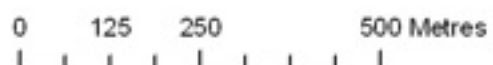
0 375 750 1,500 Metres

S= Shrubland
 F= Forest
 W= Wetland
 E= Estuarine



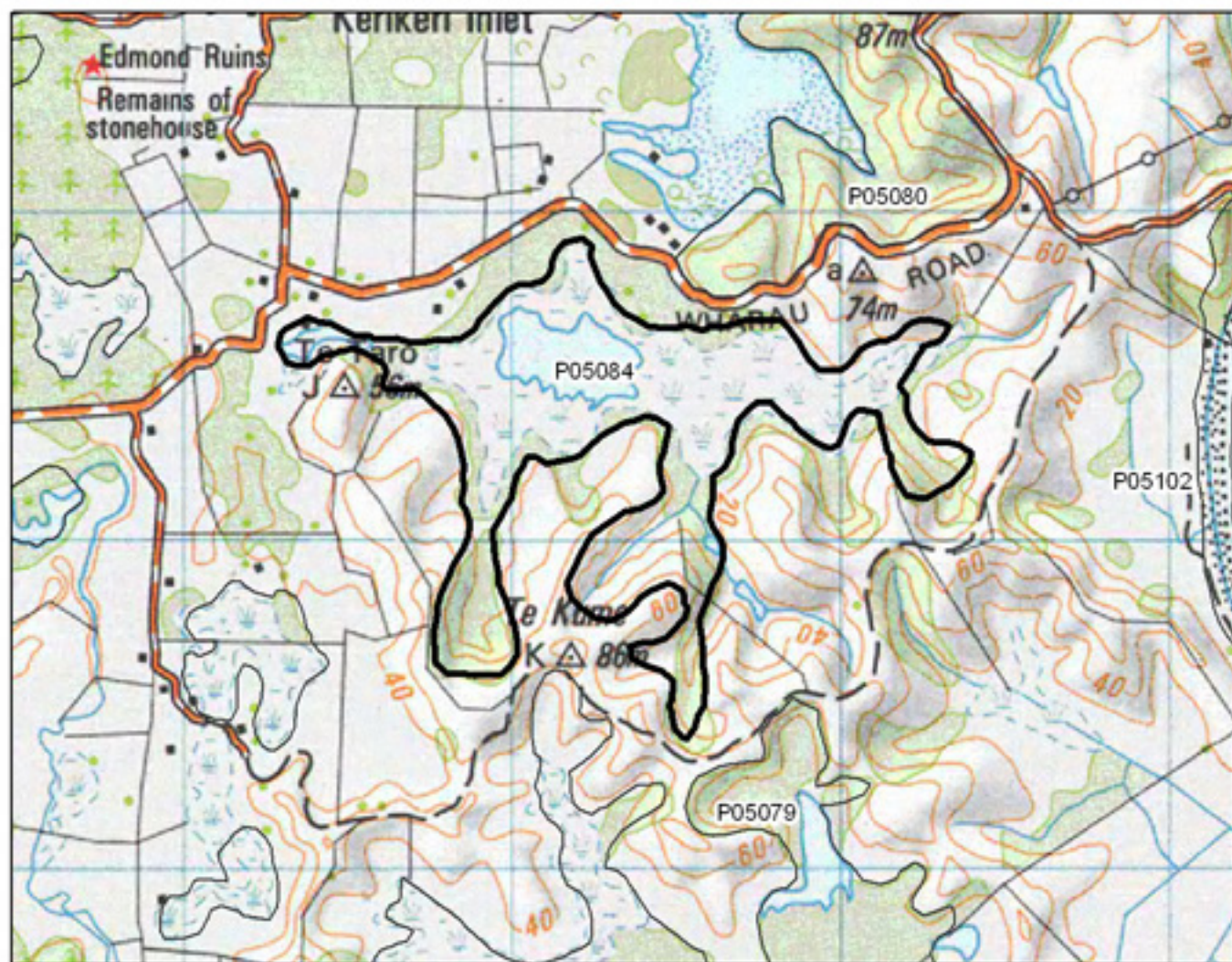


P05083 Kerikeri Inlet Road Pond

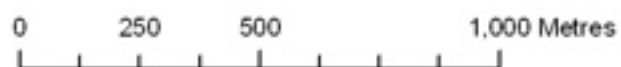


- S= Shrubland
- F= Forest
- W= Wetland
- E= Estuarine





P05084 Te Taro Pond



- S= Shrubland
- F= Forest
- W= Wetland
- E= Estuarine

