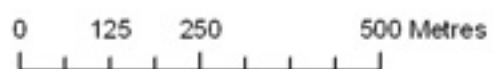
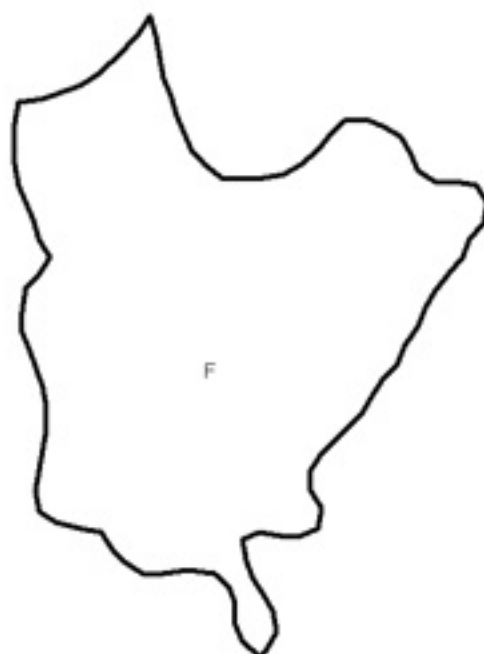
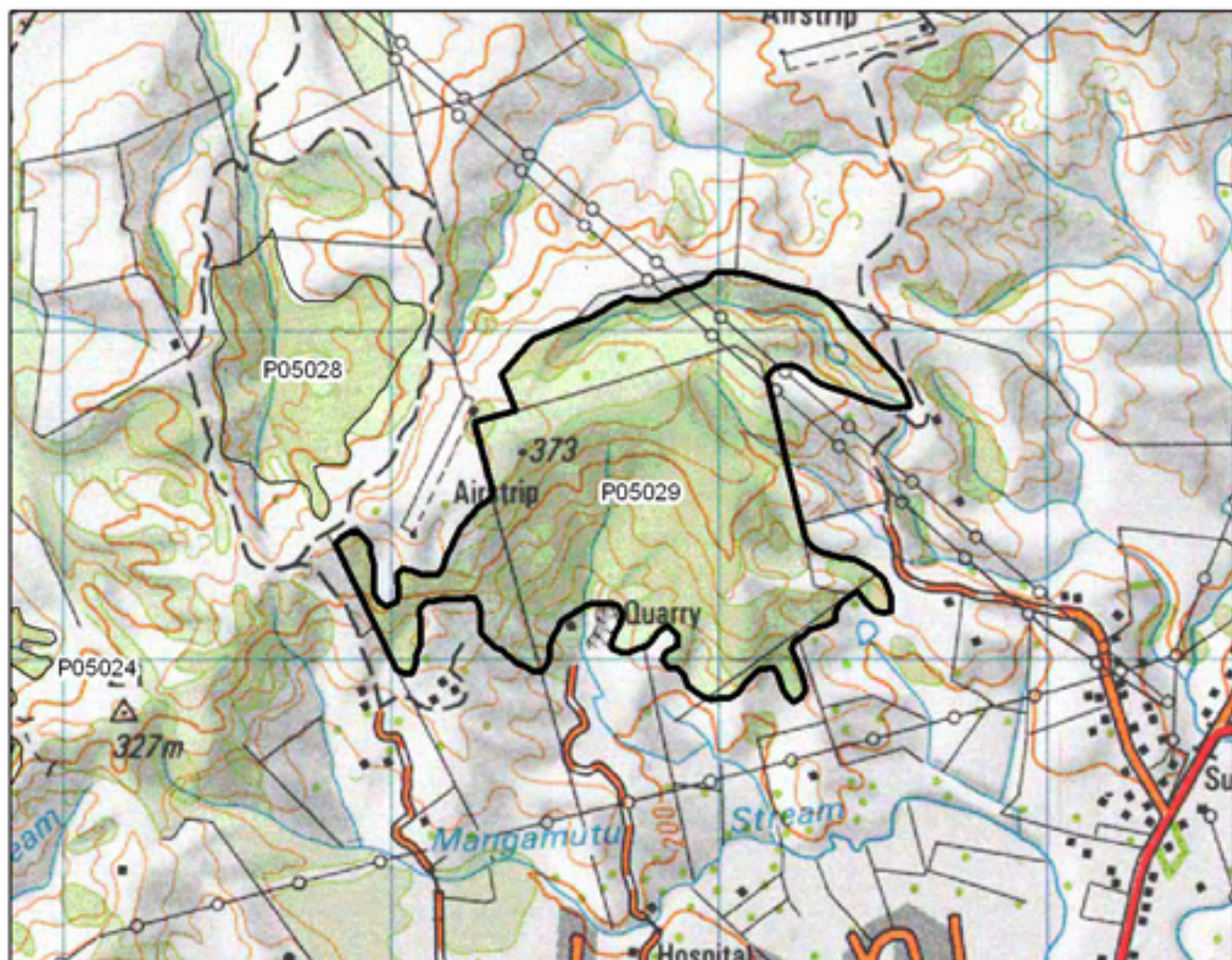


## P05028 Waihoanga Road Bush

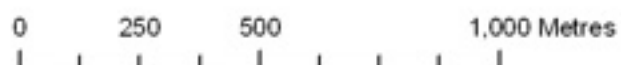


S= Shrubland  
F= Forest  
W= Wetland  
E= Estuarine

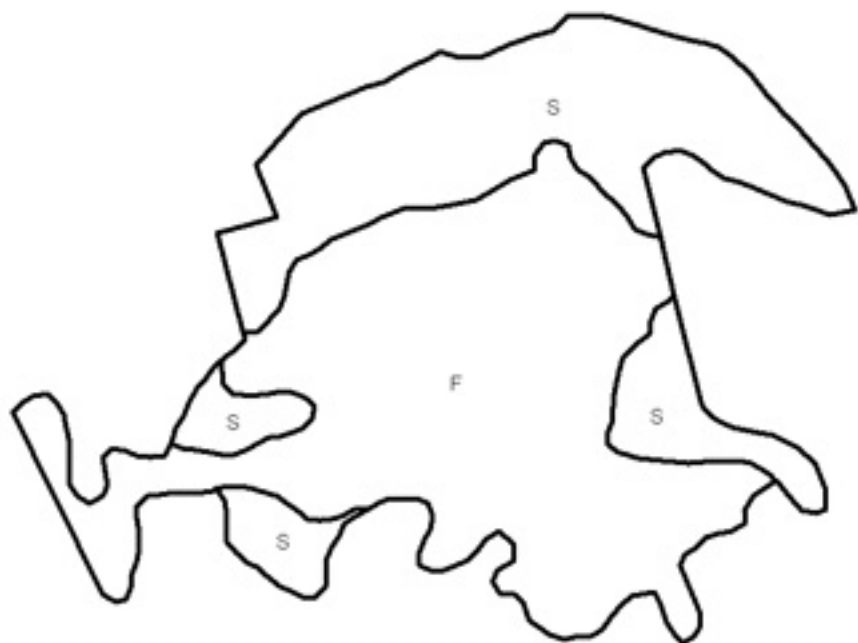




**P05029 Reservoir Bush**

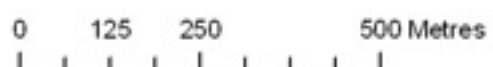


- S= Shrubland
- F= Forest
- W= Wetland
- E= Estuarine

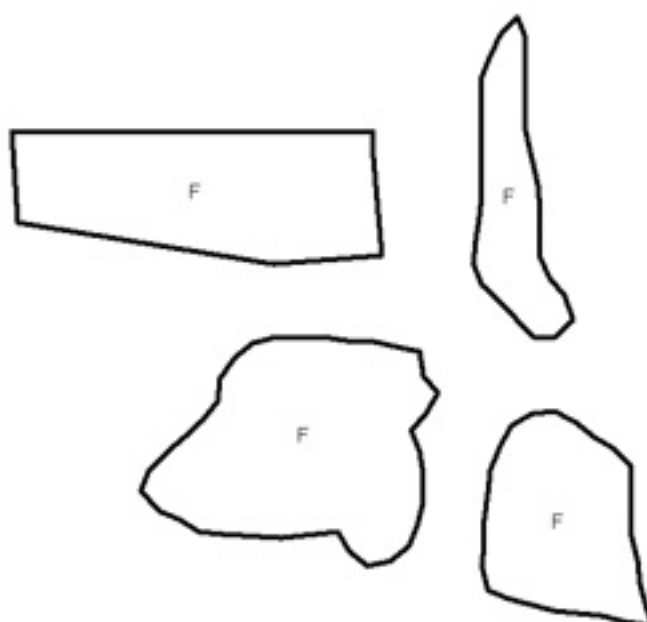


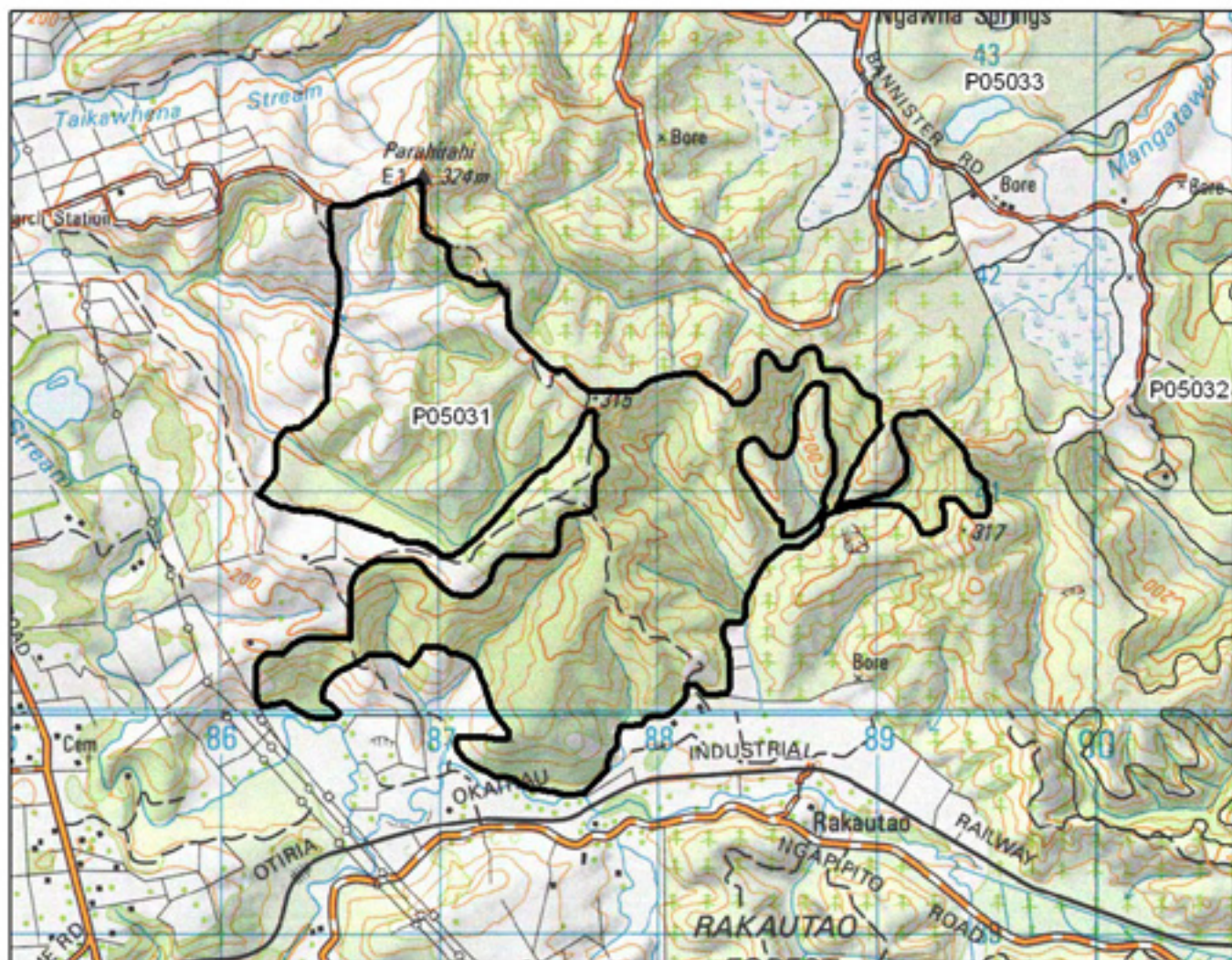


**P05030 How Road Bush**



- S= Shrubland
- F= Forest
- W= Wetland
- E= Estuarine



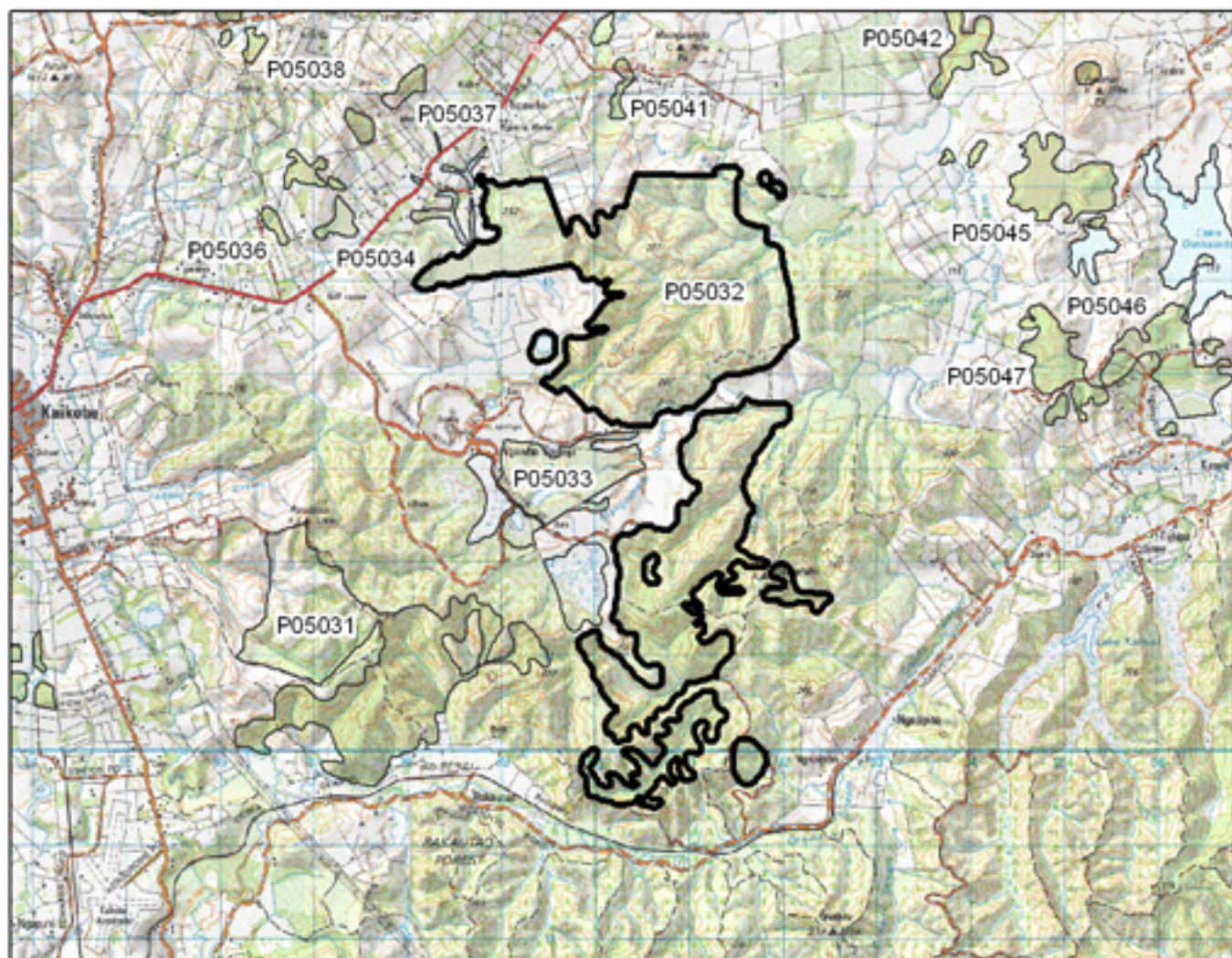


## P05031 Rakautao Bush

0 375 750 1,500 Metres

S= Shrubland  
 F= Forest  
 W= Wetland  
 E= Estuarine



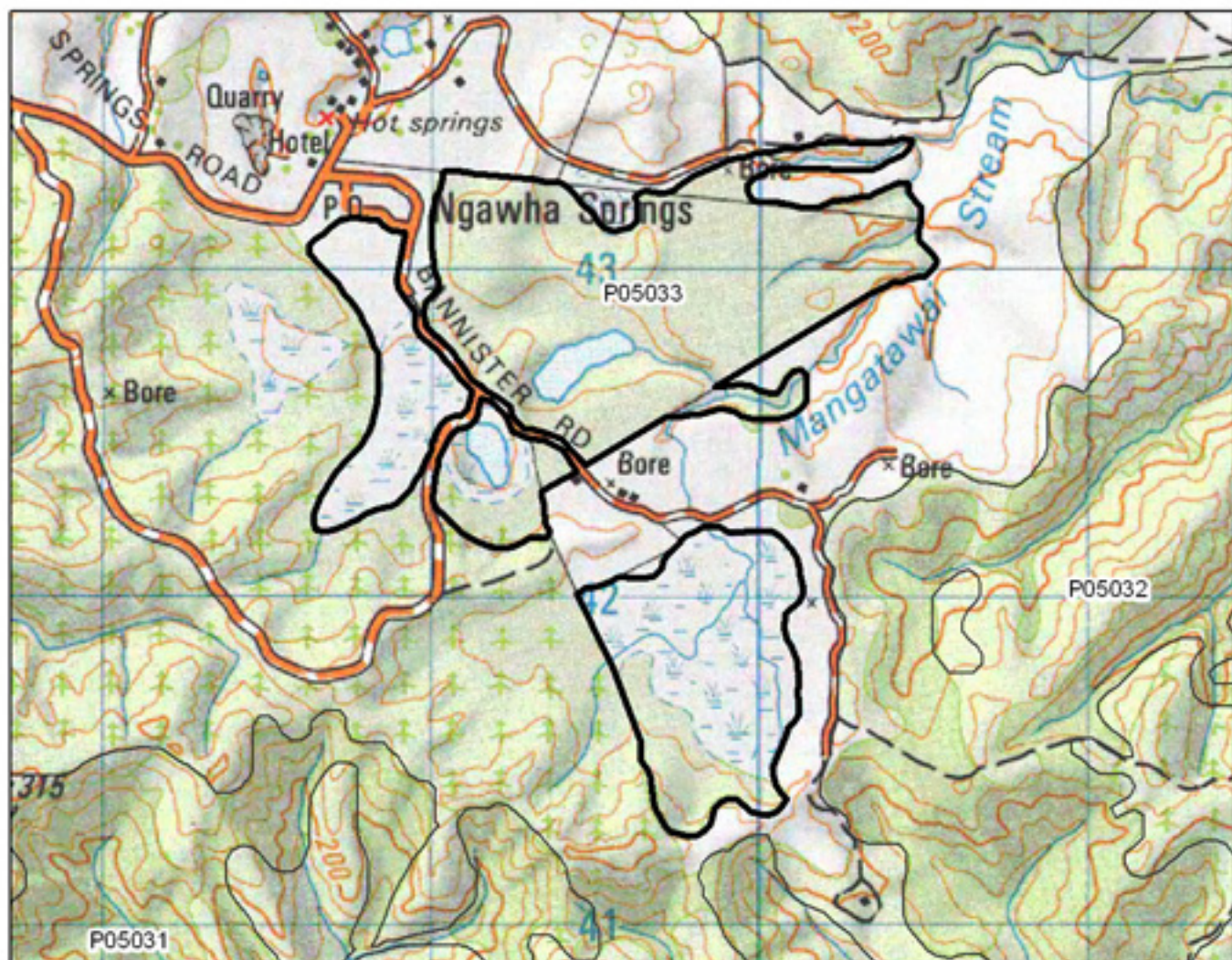


## P05032 Titihuatahi

0 625 1,250 2,500 Metres

S= Shrubland  
 F= Forest  
 W= Wetland  
 E= Estuarine

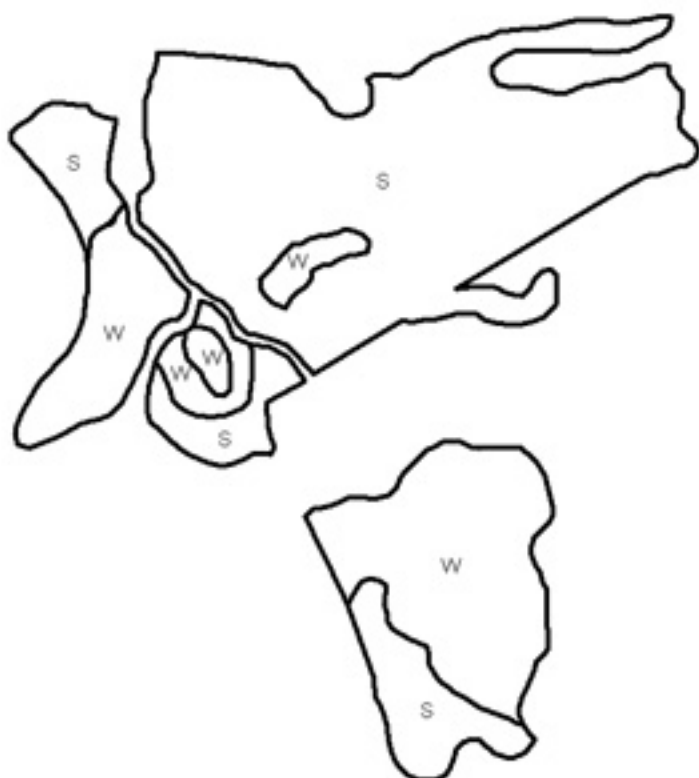


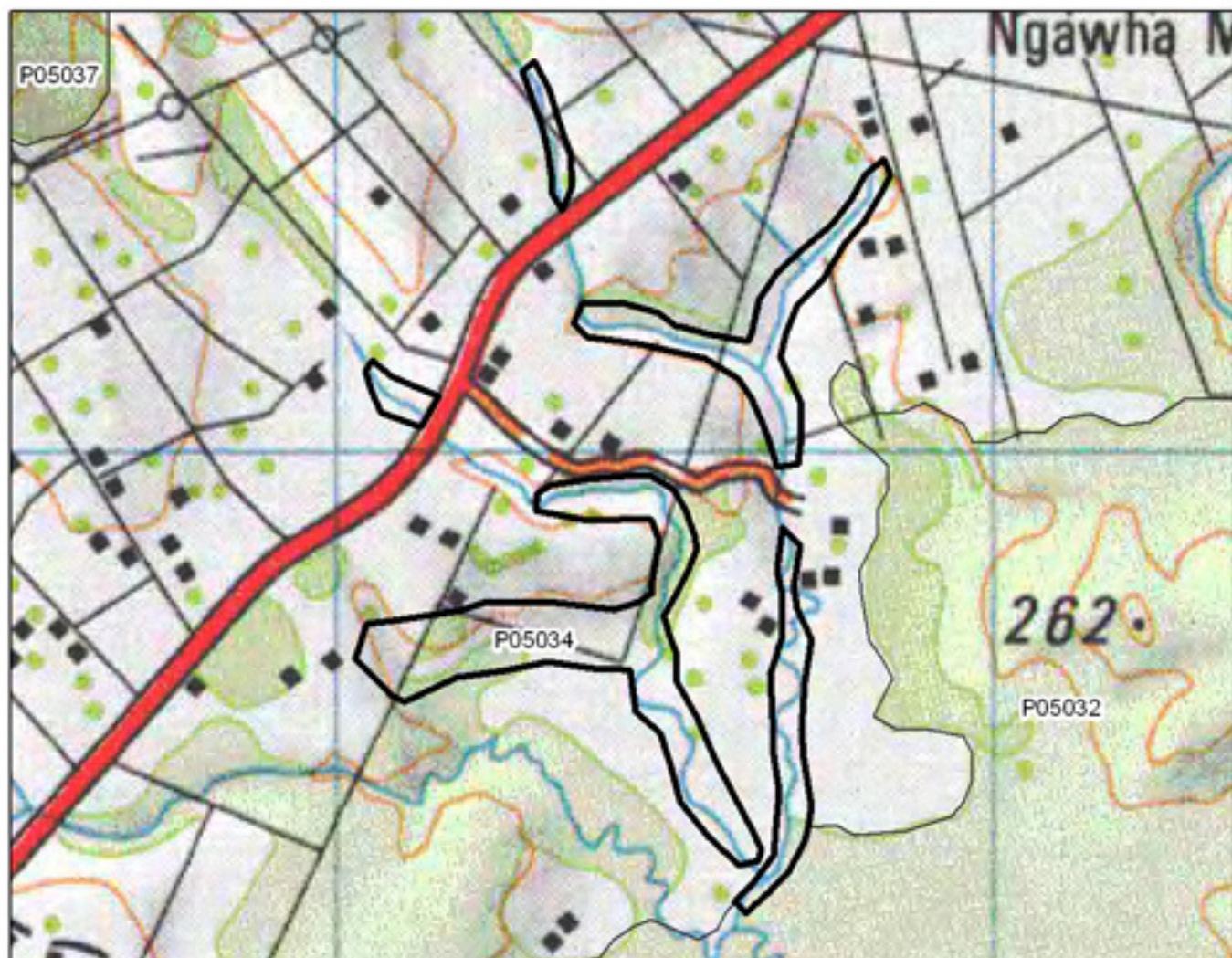


### P05033 Ngawha Geothermal Field

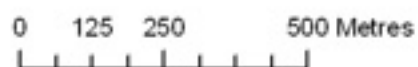


- S= Shrubland
- F= Forest
- W= Wetland
- E= Estuarine





## P05034 Ngawha Swamps

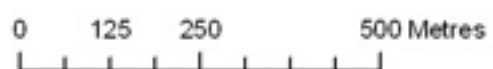


S= Shrubland  
 F= Forest  
 W= Wetland  
 E= Estuarine

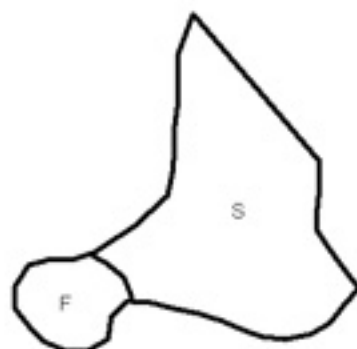




**P05035 Youngs Kahikatea Remnant**



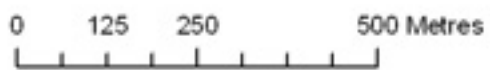
- S= Shrubland
- F= Forest
- W= Wetland
- E= Estuarine



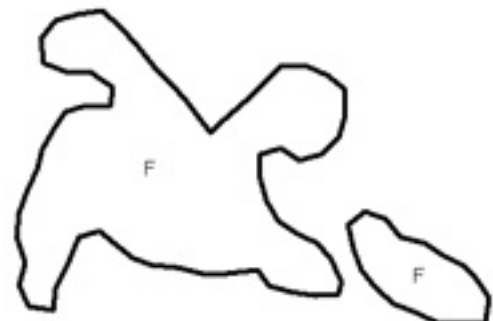


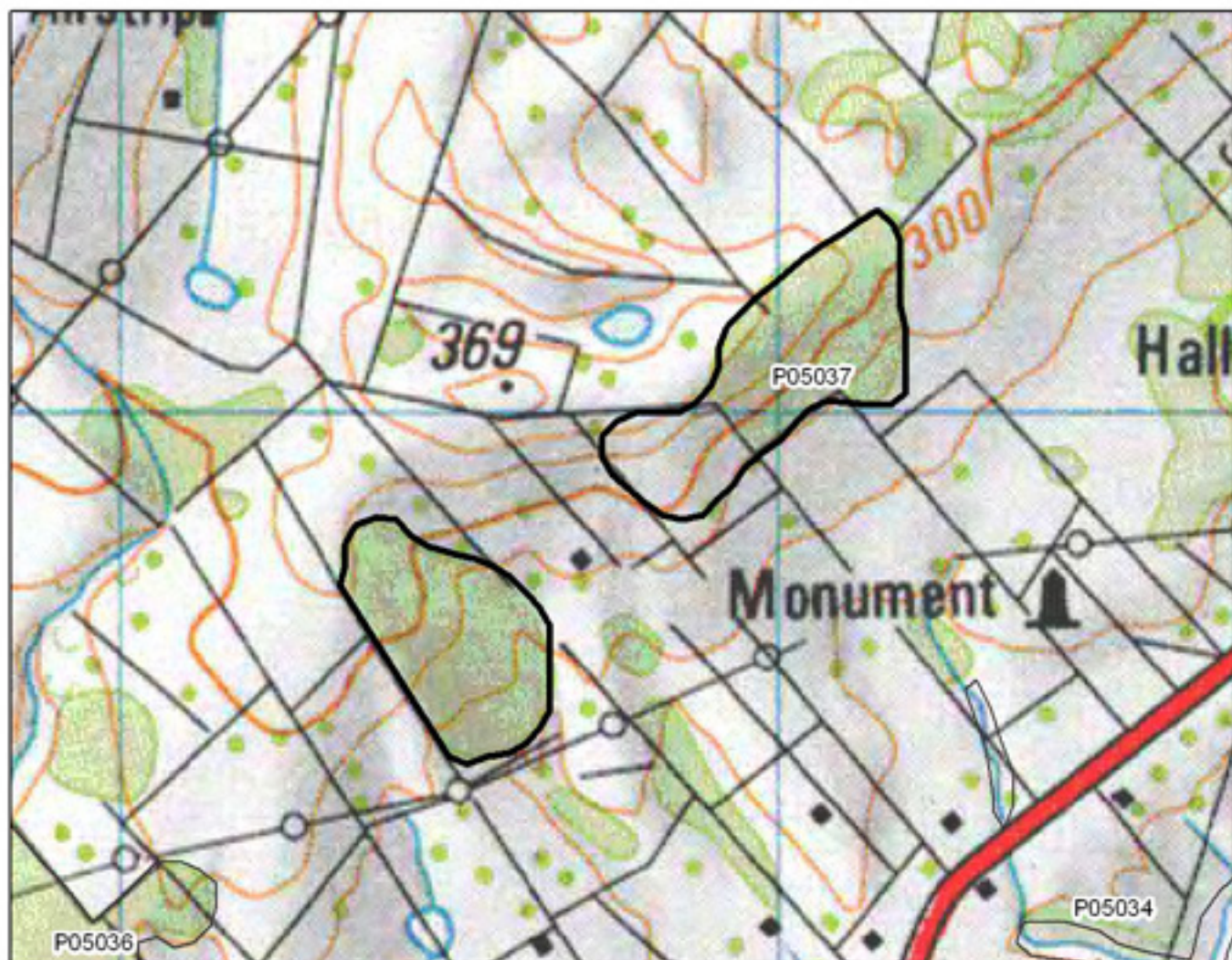


**P05036 Kopenui Stream Remnants**

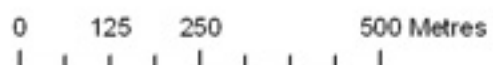


- S= Shrubland
- F= Forest
- W= Wetland
- E= Estuarine





**P05037 Ngawha Bush**



- S= Shrubland
- F= Forest
- W= Wetland
- E= Estuarine

