

**AUTHORITY TO UNDERTAKE MINIMUM IMPACT ACTIVITIES ON PUBLIC
CONSERVATION LAND UNDER EXPLORATION PERMIT 60321**

Pursuant to section 49 of the Crown Minerals Act 1991:

Authority Holders Name: **Bathurst Coal Limited**
Address: **Level 12, 1 Willeston Street
Wellington, 6011
New Zealand**

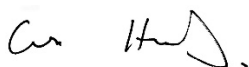
BATHURST COAL LIMITED is authorised to enter that portion of public conservation land managed by the Department of Conservation, being approximately 839.065 hectares specified in Exploration Permit 60321, to conduct minimum impact activities in accordance with the Crown Minerals Act and the MIA application received 22 July 2023, for a period from **1 November 2023 to 06 October 2025**, subject to the following conditions.

Conditions:

1. This Authority will expire on 06 October 2025 or upon expiry of Exploration Permit 60321, whichever occurs first.
2. On receipt of the extended EP 60321 the Authority holder will supply the Department with a copy including any appended maps that reduce the area of public conservation land within the extended permit.
3. The Authority holder will, at least 7 days prior, inform the Buller District Office of the dates, duration and location of the activity prior to entering Public Conservation Land within the MIA area in their district. Office contact details can be found on the department's website at <https://www.doc.govt.nz/footer-links/contact-us/office-by-name/>
4. The Authority Holder must be aware of unusual hazards such as unmarked mine shafts.
5. The Department must be advised, as soon as practicable, of any unsafe hazards of any nature on the Land.
6. The Authority Holder must ensure there is no disturbance or clearing of vegetation and no track cutting.
7. All rock samples will be obtained through hand-held, non-mechanical methods only.
8. The Authority Holder will ensure that no sampling activity is conducted at the sides of formed tracks and all sampling activity sites are restored to a condition consistent with the surrounding environment (so as not to leave an obvious mark on the land).
9. All holes and trenches must be hand dug and immediately backfilled on sampling/recording.
10. No fires are to be lit on Public Conservation Land.
11. All rubbish or materials taken onto Public Conservation Land will be removed at the end of each work period.
12. There are to be no campsites.

13. Vehicles are to remain on formed roads and tracks only.
14. The Authority Holder must be aware of 29 recorded archaeological sites shown in Appendix 2 and avoid ground disturbance within the associated 200m buffer zone.
15. No pounamu is to be taken and any found reported to Te Rūnanga o Ngāi Tahu, Christchurch, ph 0800 Kai Tahu (0800 524 8248).
16. Historic Artefacts or Sites found must be left intact and undisturbed and their existence must be brought to the attention of the District and Heritage New Zealand Pouhere Taonga.
17. The Authority Holder must ensure, if kōiwi (human skeletal remains), waahi taoka (resource or object of importance including greenstone/ pounamu), waahi tapu (place or feature of special significance) or other artefact materials are discovered work must stop, allowing for a site inspection by the appropriate Runanga and their advisors and the Heritage New Zealand Regional Archaeologist. In the case of kōiwi, the New Zealand Police must also be advised. These people will determine if the discovery is likely to be extensive and whether a thorough site investigation will be required. Materials discovered should be handled and removed by tangata whenua who possess knowledge of tikanga (protocol) appropriate removal or preservation and an appointed qualified archaeologist. (All Māori archaeological sites are protected under the Heritage New Zealand Pouhere Taonga Act 2014.) g
18. The Authority holder will adhere to all relevant Health and Safety legislation and regulations, and any instructions/requirements of the Minister of Labour and/or Ministry of Business, Innovation and Employment and/or the High Hazards Unit and/or WorkSafe New Zealand.
19. In order to prevent weed spread, all field staff must ensure that all footwear, gaiters, packs and all other equipment is cleaned so that they are free of any weed seeds, plant fragments and mud, prior to entering Public Conservation Land.
20. All persons undertaking the activity comply with all guidelines and notices put out by Biosecurity New Zealand regarding measures to avoid spreading the pest organism *Didymosphenia geminata* (refer to www.biosecurity.govt.nz and appendix 3).
21. The Environmental Care Code and Water Care Code must be adhered to at all times (see appendix 4).
22. The Authority Holder must ensure that prior to any ground disturbance as part of minimum impact activities a thorough survey is completed to check for the presence of the following species: *Powelliphanta augusta* and *Powelliphanta patrickensis* (Large land snails). *Naultinus tuberculatus* (West Coast Green Gecko) and *Mokopiriakau granulatus* (Forest Gecko). Should any presence of any of these species be discovered minimum impact activities shall cease at that location and a new sampling site identified. The Buller District office must be notified of the find including providing GPS co-ordinates NZTM50 of the species find location within 7 working days of the date of discovery. Please Contact: 03 788 8008 paparoavc@doc.govt.nz
23. The Authority Holder must check for the presence of *Apteryx maxima*, Great-spotted Kiwi/Rorua prior to minimum impact activities commencing; and minimum impact activities must cease at that sample site and a new sampling site be identified. Greymouth District office must be notified of the find including providing GPS co-ordinates NZTM50 of the location within 7 working days of the encounter. Contact: 03 788 8008 paparoavc@doc.govt.nz

Dated this 10th day of November 2023



Chris Hickford
Operations Manager, Greymouth District

RELEASED UNDER THE OFFICIAL INFORMATION ACT

Table 1- PCL and Status

Legal Description	Instrument of title	Ownership of non-statute minerals
Sec 67 SO 4539	Conservation Area - Mount Rochfort, Stewardship Area - s.25 Conservation Act 1987	Crown
Sec 77 SO 4539	Conservation Area - Mount Rochfort, Stewardship Area - s.25 Conservation Act 1987	Crown
Sec 58 SO 4539	Conservation Area - Mount Rochfort, Stewardship Area - s.25 Conservation Act 1987	Crown
Sec 1 SO 15088	NL11A/1123	Crown
Sec 94 SO 4539	Conservation Area - Mount Rochfort, Stewardship Area - s.25 Conservation Act 1987	Crown
Sec 45 Blk VI Kawatiri SD	NZ Gazette 1979 p700, Denniston Scenic Reserve, Scenic Reserve - s.19(1)(a) Rese	Crown
Sec 102 SO 4539	Conservation Area - Mount Rochfort, Stewardship Area - s.25 Conservation Act 1987	Crown
Sec 37 SO 4539	Conservation Area - Mount Rochfort, Stewardship Area - s.25 Conservation Act 1987	Crown
Sec 3 SO 4539	Conservation Area - Mount Rochfort, Stewardship Area - s.25 Conservation Act 1987	Crown
Sec 9 SO 4539	Conservation Area - Mount Rochfort, Stewardship Area - s.25 Conservation Act 1987	Crown

Sec 49 SO 4539	Conservation Area - Mount Rochfort, Stewardship Area - s.25 Conservation Act 1987	Crown
Sec 97 SO 4539	Conservation Area - Mount Rochfort, Stewardship Area - s.25 Conservation Act 1987	Crown
Sec 28 SO 4539	Conservation Area - Mount Rochfort, Stewardship Area - s.25 Conservation Act 1987	Crown
Sec 64 SO 4539	Conservation Area - Mount Rochfort, Stewardship Area - s.25 Conservation Act 1987	Crown
Sec 45 SO 4539	Conservation Area - Mount Rochfort, Stewardship Area - s.25 Conservation Act 1987	Crown
Sec 51 SO 4539	Conservation Area - Mount Rochfort, Stewardship Area - s.25 Conservation Act 1987	Crown
Sec 13 Blk VI Kawatiri SD	Conservation Area - Mount Rochfort, Stewardship Area - s.25 Conservation Act 1987	Crown
Sec 72 SO 4539	Conservation Area - Mount Rochfort, Stewardship Area - s.25 Conservation Act 1987	Crown
Sec 11 Blk VI Kawatiri SD	NL55/139	Private
Sec 88 SO 4539	Conservation Area - Mount Rochfort, Stewardship Area - s.25 Conservation Act 1987	Crown
Sec 16 SO 4539	Conservation Area - Mount Rochfort, Stewardship Area - s.25 Conservation Act 1987	Crown
Sec 80 SO 4539	Conservation Area - Mount Rochfort, Stewardship Area - s.25 Conservation Act 1987	Crown
Sec 87 SO 4539	Conservation Area - Mount Rochfort, Stewardship Area - s.25 Conservation Act 1987	Crown
Sec 22 SO 4539	Conservation Area - Mount Rochfort, Stewardship Area - s.25 Conservation Act 1987	Crown
Sec 84 SO 4539	Conservation Area - Mount Rochfort, Stewardship Area - s.25 Conservation Act 1987	Crown
Sec 5 SO 4539	Conservation Area - Mount Rochfort, Stewardship Area - s.25 Conservation Act 1987	Crown
Sec 33 SO 4539	Conservation Area - Mount Rochfort, Stewardship Area - s.25 Conservation Act 1987	Crown

Sec 49 SO 4539	Conservation Area - Mount Rochfort, Stewardship Area - s.25 Conservation Act 1987	Crown
Sec 97 SO 4539	Conservation Area - Mount Rochfort, Stewardship Area - s.25 Conservation Act 1987	Crown
Sec 28 SO 4539	Conservation Area - Mount Rochfort, Stewardship Area - s.25 Conservation Act 1987	Crown
Sec 64 SO 4539	Conservation Area - Mount Rochfort, Stewardship Area - s.25 Conservation Act 1987	Crown
Sec 45 SO 4539	Conservation Area - Mount Rochfort, Stewardship Area - s.25 Conservation Act 1987	Crown
Sec 51 SO 4539	Conservation Area - Mount Rochfort, Stewardship Area - s.25 Conservation Act 1987	Crown
Sec 13 Blk VI Kawatiri SD	Conservation Area - Mount Rochfort, Stewardship Area - s.25 Conservation Act 1987	Crown
Sec 72 SO 4539	Conservation Area - Mount Rochfort, Stewardship Area - s.25 Conservation Act 1987	Crown
Sec 11 Blk VI Kawatiri SD	NL55/139	Private
Sec 88 SO 4539	Conservation Area - Mount Rochfort, Stewardship Area - s.25 Conservation Act 1987	Crown
Sec 16 SO 4539	Conservation Area - Mount Rochfort, Stewardship Area - s.25 Conservation Act 1987	Crown
Sec 80 SO 4539	Conservation Area - Mount Rochfort, Stewardship Area - s.25 Conservation Act 1987	Crown
Sec 87 SO 4539	Conservation Area - Mount Rochfort, Stewardship Area - s.25 Conservation Act 1987	Crown
Sec 22 SO 4539	Conservation Area - Mount Rochfort, Stewardship Area - s.25 Conservation Act 1987	Crown
Sec 84 SO 4539	Conservation Area - Mount Rochfort, Stewardship Area - s.25 Conservation Act 1987	Crown
Sec 5 SO 4539	Conservation Area - Mount Rochfort, Stewardship Area - s.25 Conservation Act 1987	Crown
Sec 33 SO 4539	Conservation Area - Mount Rochfort, Stewardship Area - s.25 Conservation Act 1987	Crown

Sec 75 SO 4539	Conservation Area - Mount Rochfort, Stewardship Area - s.25 Conservation Act 1987	Crown
Sec 95 SO 4539	Conservation Area - Mount Rochfort, Stewardship Area - s.25 Conservation Act 1987	Crown
Sec 79 SO 4539	Conservation Area - Mount Rochfort, Stewardship Area - s.25 Conservation Act 1987	Crown
Sec 63 SO 4539	Conservation Area - Mount Rochfort, Stewardship Area - s.25 Conservation Act 1987	Crown
Pt Sec 6 Blk VI Kawatiri SD	Conservation Area - Mount Rochfort, Stewardship Area - s.25 Conservation Act 1987	Crown
Sec 36 SO 4539	Conservation Area - Mount Rochfort, Stewardship Area - s.25 Conservation Act 1987	Crown
Sec 7 SO 4539	Conservation Area - Mount Rochfort, Stewardship Area - s.25 Conservation Act 1987	Crown
Sec 42 SO 4539	Conservation Area - Mount Rochfort, Stewardship Area - s.25 Conservation Act 1987	Crown
Sec 71 SO 4539	Conservation Area - Mount Rochfort, Stewardship Area - s.25 Conservation Act 1987	Crown
Sec 30 SO 4539	Conservation Area - Mount Rochfort, Stewardship Area - s.25 Conservation Act 1987	Crown
Pt Sec 6 Blk VI Kawatiri SD	Conservation Area - Mount Rochfort, Stewardship Area - s.25 Conservation Act 1987	Crown
Sec 4 SO 14864	NL10A/574	Crown
Sec 109 SO 4539	Conservation Area - Mount Rochfort, Stewardship Area - s.25 Conservation Act 1987	Crown
Sec 101 SO 4539	Conservation Area - Mount Rochfort, Stewardship Area - s.25 Conservation Act 1987	Crown
Sec 10 SO 4539	Conservation Area - Mount Rochfort, Stewardship Area - s.25 Conservation Act 1987	Crown
Sec 5 Blk VI Kawatiri SD	Conservation Area - Mount Rochfort, Stewardship Area - s.25 Conservation Act 1987	Crown
Sec 47 SO 4539	Conservation Area - Mount Rochfort, Stewardship Area - s.25 Conservation Act 1987	Crown

Sec 46 SO 4539	Conservation Area - Mount Rochfort, Stewardship Area - s.25 Conservation Act 1987	Crown
Sec 15 SO 4539	Conservation Area - Mount Rochfort, Stewardship Area - s.25 Conservation Act 1987	Crown
Sec 104 SO 4539	Conservation Area - Mount Rochfort, Stewardship Area - s.25 Conservation Act 1987	Crown
Sec 18 SO 4539	Conservation Area - Mount Rochfort, Stewardship Area - s.25 Conservation Act 1987	Crown
Sec 93 SO 4539	Conservation Area - Mount Rochfort, Stewardship Area - s.25 Conservation Act 1987	Crown
Sec 55 SO 4539	Conservation Area - Mount Rochfort, Stewardship Area - s.25 Conservation Act 1987	Crown
Pt Sec 9 Blk VI Kawatiri SD	Conservation Area - Mount Rochfort, Stewardship Area - s.25 Conservation Act 1987	Crown
Sec 29 SO 4539	Conservation Area - Mount Rochfort, Stewardship Area - s.25 Conservation Act 1987	Crown
Sec 34 SO 4539	Conservation Area - Mount Rochfort, Stewardship Area - s.25 Conservation Act 1987	Crown
Sec 85 SO 4539	Conservation Area - Mount Rochfort, Stewardship Area - s.25 Conservation Act 1987	Crown
Sec 59 SO 4539	Conservation Area - Mount Rochfort, Stewardship Area - s.25 Conservation Act 1987	Crown
Sec 76 SO 4539	Conservation Area - Mount Rochfort, Stewardship Area - s.25 Conservation Act 1987	Crown
Sec 44 SO 4539	Conservation Area - Mount Rochfort, Stewardship Area - s.25 Conservation Act 1987	Crown
Sec 23 SO 4539	Conservation Area - Mount Rochfort, Stewardship Area - s.25 Conservation Act 1987	Crown
Sec 1 SO 4539	Conservation Area - Mount Rochfort, Stewardship Area - s.25 Conservation Act 1987	Crown
Sec 12 SO 4539	Conservation Area - Mount Rochfort, Stewardship Area - s.25 Conservation Act 1987	Crown

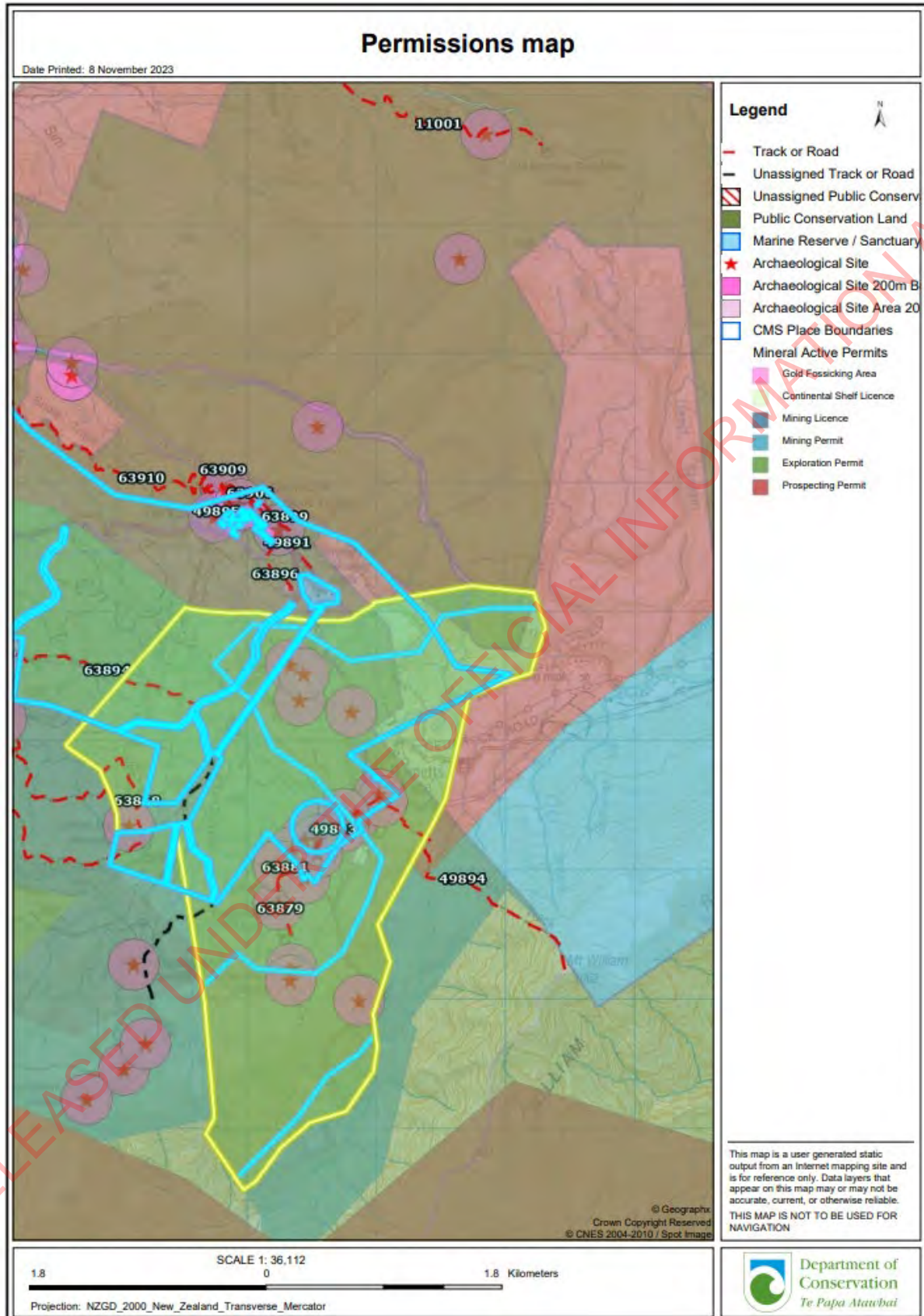
Sec 41 SO 4539	Conservation Area - Mount Rochfort, Stewardship Area - s.25 Conservation Act 1987	Crown
Sec 68 SO 4539	Conservation Area - Mount Rochfort, Stewardship Area - s.25 Conservation Act 1987	Crown
Sec 81 SO 4539	Conservation Area - Mount Rochfort, Stewardship Area - s.25 Conservation Act 1987	Crown
Sec 89 SO 4539	Conservation Area - Mount Rochfort, Stewardship Area - s.25 Conservation Act 1987	Crown
Sec 98 SO 4539	Conservation Area - Mount Rochfort, Stewardship Area - s.25 Conservation Act 1987	Crown
Sec 107 SO 4539	Conservation Area - Mount Rochfort, Stewardship Area - s.25 Conservation Act 1987	Crown
Sec 66 SO 4539	Conservation Area - Mount Rochfort, Stewardship Area - s.25 Conservation Act 1987	Crown
Sec 4 SO 4539	Conservation Area - Mount Rochfort, Stewardship Area - s.25 Conservation Act 1987	Crown
Sec 6 SO 4539	Conservation Area - Mount Rochfort, Stewardship Area - s.25 Conservation Act 1987	Crown
Sec 48 SO 4539	Conservation Area - Mount Rochfort, Stewardship Area - s.25 Conservation Act 1987	Crown
Crown Land Block X (under action) Kawatiri Survey District	Conservation Area - Mount Rochfort, Stewardship Area - s.25 Conservation Act 1987	Crown
Sec 92 SO 4539	Conservation Area - Mount Rochfort, Stewardship Area - s.25 Conservation Act 1987	Crown
Sec 54 SO 4539	Conservation Area - Mount Rochfort, Stewardship Area - s.25 Conservation Act 1987	Crown
Sec 17 SO 4539	Conservation Area - Mount Rochfort, Stewardship Area - s.25 Conservation Act 1987	Crown
Sec 78 SO 4539	Conservation Area - Mount Rochfort, Stewardship Area - s.25 Conservation Act 1987	Crown
Sec 70 SO 4539	Conservation Area - Mount Rochfort, Stewardship Area - s.25 Conservation Act 1987	Crown

Sec 65 SO 4539	Conservation Area - Mount Rochfort, Stewardship Area - s.25 Conservation Act 1987	Crown
Sec 11 SO 4539	Conservation Area - Mount Rochfort, Stewardship Area - s.25 Conservation Act 1987	Crown
Sec 74 SO 4539	Conservation Area - Mount Rochfort, Stewardship Area - s.25 Conservation Act 1987	Crown
Sec 3 SO 14864	NL10A/573	Crown
Sec 43 SO 4539	Conservation Area - Mount Rochfort, Stewardship Area - s.25 Conservation Act 1987	Crown
Sec 24 SO 4539	Conservation Area - Mount Rochfort, Stewardship Area - s.25 Conservation Act 1987	Crown
Sec 8 SO 4539	Conservation Area - Mount Rochfort, Stewardship Area - s.25 Conservation Act 1987	Crown
Sec 61 SO 4539	Conservation Area - Mount Rochfort, Stewardship Area - s.25 Conservation Act 1987	Crown
Sec 21 SO 4539	Conservation Area - Mount Rochfort, Stewardship Area - s.25 Conservation Act 1987	Crown
Sec 100 SO 4539	Conservation Area - Mount Rochfort, Stewardship Area - s.25 Conservation Act 1987	Crown
Sec 40 SO 4539	Conservation Area - Mount Rochfort, Stewardship Area - s.25 Conservation Act 1987	Crown
Sec 108 SO 4539	Conservation Area - Mount Rochfort, Stewardship Area - s.25 Conservation Act 1987	Crown
Sec 105 SO 4539	Conservation Area - Mount Rochfort, Stewardship Area - s.25 Conservation Act 1987	Crown
Sec 99 SO 4539	Conservation Area - Mount Rochfort, Stewardship Area - s.25 Conservation Act 1987	Crown
Sec 32 SO 4539	Conservation Area - Mount Rochfort, Stewardship Area - s.25 Conservation Act 1987	Crown
Crown Land (under action) SO Plan 161	Conservation Area - Mount Rochfort, Stewardship Area - s.25 Conservation Act 1987	Crown
Sec 103 SO 4539	Conservation Area - Mount Rochfort, Stewardship Area - s.25 Conservation Act 1987	Crown

Sec 56 SO 4539	Conservation Area - Mount Rochfort, Stewardship Area - s.25 Conservation Act 1987	Crown
Sec 52 SO 4539	Conservation Area - Mount Rochfort, Stewardship Area - s.25 Conservation Act 1987	Crown
Sec 86 SO 4539	Conservation Area - Mount Rochfort, Stewardship Area - s.25 Conservation Act 1987	Crown
Pt Sec 9 Blk VI Kawatiri SD	Conservation Area - Mount Rochfort, Stewardship Area - s.25 Conservation Act 1987	Crown
Sec 82 SO 4539	Conservation Area - Mount Rochfort, Stewardship Area - s.25 Conservation Act 1987	Crown
Sec 90 SO 4539	Conservation Area - Mount Rochfort, Stewardship Area - s.25 Conservation Act 1987	Crown
Sec 69 SO 4539	Conservation Area - Mount Rochfort, Stewardship Area - s.25 Conservation Act 1987	Crown
Sec 60 SO 4539	Conservation Area - Mount Rochfort, Stewardship Area - s.25 Conservation Act 1987	Crown
Sec 26 SO 4539	Conservation Area - Mount Rochfort, Stewardship Area - s.25 Conservation Act 1987	Crown
Sec 14 SO 4539	Conservation Area - Mount Rochfort, Stewardship Area - s.25 Conservation Act 1987	Crown
Sec 96 SO 4539	Conservation Area - Mount Rochfort, Stewardship Area - s.25 Conservation Act 1987	Crown
Sec 31 SO 4539	Conservation Area - Mount Rochfort, Stewardship Area - s.25 Conservation Act 1987	Crown
Sec 19 SO 4539	Conservation Area - Mount Rochfort, Stewardship Area - s.25 Conservation Act 1987	Crown
Sec 35 SO 4539	Conservation Area - Mount Rochfort, Stewardship Area - s.25 Conservation Act 1987	Crown
Sec 73 SO 4539	Conservation Area - Mount Rochfort, Stewardship Area - s.25 Conservation Act 1987	Crown
Crown Land (under action) Survey Office Plan 9821	Conservation Area - Waimangaroa-Granity, Stewardship Area - s.25 Conservation Act 1987	Crown

Sec 62 SO 4539	Conservation Area - Mount Rochfort, Stewardship Area - s.25 Conservation Act 1987	Crown
Sec 27 SO 4539	Conservation Area - Mount Rochfort, Stewardship Area - s.25 Conservation Act 1987	Crown
Crown Land Block VI (under action) Kawatiri SD	Conservation Area - Mount Rochfort, Stewardship Area - s.25 Conservation Act 1987	Crown

APPENDIX 2



Sites recorded

Heritage New Zealand Listed Category 1 historic place (List # 7049). Extent runs from the base of the incline to the centre of activities at the brakehead and then continues along the route to major mining areas at Burnett's Face and Coalbrookdale.

29 recorded archaeological sites:

K29/57 Denniston town	L29/88 miners' track	L29/90 water supply for hospital
L29/87 quarry and associated features	L29/89 house site	L29/93 drystone bridge abutments

Page 6 of 8

L29/25 house site	L29/26 terrace	L29/29 hotel site
L29/39 Burnetts Face settlement	L29/36 house terrace	L29/24 Coalbrookdale rope road
L29/30 three terrace house sites	L29/27 house terrace	L29/31 house terrace
L29/32 Geordie Settlement terraces	L29/28 house terrace	L29/33 house terrace
L29/34 three small house terraces	L29/35 house terrace	K29/77 remains of Lake Rochfort power scheme
L29/86 Cascade Fanhouse	L29/48 benched track	L29/49 earth cored dam
K29/72 Whareatea Extended Mine	K29/73 Plateau Mine	K29/74 Crawford Party coal mine
K29/75 Escarpment Mine	L29/37 Coalbrookdale building foundations, tramways, fan house, dams	
K29/98 Sullivan Mine	K29/99 Sullivan West Mine	

Actively conserved heritage places:

Denniston aerial tensioner (Equipment ID: 100040003)	Denniston bowling green (Equipment ID: 100030175)
McGlenns Dam (Equipment ID: 100039780)	Roperoad (Equipment ID: 100038732)
Whareatea aerial tower (Equipment ID: 100088493)	Whareatea drive and steps (Equipment ID: 100039109)
Coalbrookdale and Cascade Mines (Functional location: DS-34-105-2022)	

APPENDIX 3 - Didymosphenia geminata – Didymo

Didymo is an algae made up of cells that cannot be seen with the naked eye until large colonies form. It only takes one of these cells to survive and be transported to a nearby waterway for Didymo to spread. Didymo cells thrive in freshwater and if you are cleaning with freshwater you are helping to keep them alive.

Didymo is an unwanted organism under the Biosecurity Act 1993. Under the Act those knowingly spreading an unwanted organism can be liable for up to five years imprisonment and/or a \$100,000.00 fine.

To ensure you do not spread Didymo, wherever possible restrict equipment, boats, clothing and other items for exclusive use in a single waterway.

If you are moving between waterways, you must:

1. Check: Before leaving the river, remove all obvious clumps of algae and look for hidden clumps. Leave them at the affected site. If you find any later, do not wash them down drains. Treat them with the approved cleaning method below, dry them and put them in a rubbish bin.
2. Clean: Soak or scrub all items for at least one minute in either, hot (60°C) water, a two percent solution of household bleach or a five percent solution of salt, nappy cleaner, antiseptic hand cleaner or dishwashing detergent. A two percent solution is 200 ml, a five percent solution is 500 ml (two large cups), with water added to make 10 litres.
3. Dry: If cleaning is not practical (i.e., livestock), after the items are completely dry to touch, wait an additional 48 hours before contact or use in any other waterway.

Fish, plants, rocks and other river items should not be moved between waterways.

If you require more information please visit: www.biosecurity.govt.nz/didymo

To report a suspected, find of Didymo, please call 0800 80 99 66

APPENDIX 4 - Environmental and Water Care Codes

Environmental Care Code	Water Care Code
<p>Protect Plants and Animals Treat New Zealand's Forest and birds with care and respect. They are unique and often rare.</p> <p>Remove Rubbish Litter is unattractive, harmful to wildlife and can increase vermin and disease. Plan your visits to reduce rubbish, and carry out what you carry in.</p> <p>Bury Toilet Waste In areas without toilet facilities, bury your toilet waste in a shallow hole well away from waterways, tracks, campsites, and huts.</p> <p>Keep Streams and Lakes Clean When cleaning and washing, take the water and wash well away from the water source. Because soaps and detergents are harmful to water life, drain used water into the soil to allow it to be filtered. If you suspect the water may be contaminated, either boil it for at least three minutes, or filter it, or chemically treat it.</p> <p>Take Care with Fires. Portable fuel stoves are less harmful to the environment and are more efficient than fires. If you do use a fire, keep it small, use only dead wood and make sure it is out by dousing it with water and checking the ashes before leaving.</p> <p>Camp Carefully When camping, leave no trace of your visit.</p> <p>Keep to the Track By keeping to the track, where one exists, you lessen the chance of damaging fragile plants.</p> <p>Consider Others People visit the back-country and rural areas for many reasons. Be considerate of other visitors who also have a right to enjoy</p>	<p>Find Out First Find out and follow the regulations governing recreational use of waterways and access. They are designed to minimise conflict between users and protect everyone's health and safety.</p> <p>Stay on Established Tracks and Use Existing Facilities By using existing facilities, where these are provided, you run less chance of disturbing wildlife and damaging riverbanks and foreshores.</p> <p>Take Care of Your Gear Careless use of equipment can harm wildlife and other users.</p> <p>Remove Rubbish Litter is unattractive, harmful to wildlife and pollutes water. Plan your visit to reduce rubbish, and carry out what you carry in.</p> <p>Dispose of Toilet Waste Properly Improper disposal of toilet waste can contaminate water, damage the environment and is culturally offensive. Use disposal facilities where provided or bury waste in a shallow hole at least 50 metres away from waterways.</p> <p>Be Careful with Chemicals Use chemicals sparingly, and refuel with care. Dispose of cooking or washing water well away from the source.</p> <p>Respect Our Cultural Heritage Many New Zealand waterways have special cultural, spiritual, or historical values. Treat these places with consideration and respect.</p> <p>Take Only the Food You Need When taking food from the sea or freshwater, don't overdo it. Sustain life in our waterways by taking only what you need and no more than the legal limit.</p>