



NZTF South Westland District Tahr Management Plan 2025/26

SIGNED by:

Operations Manager South Westland  
On behalf of the Department of Conservation

SIGNED by:

Chairperson  
On behalf of the Tahr Foundation

## Contents

1.1	Executive Summary.....	3
1.2	Background .....	3
1.3	Core activities planned for 2025/26 .....	4&5
1.3.2	Management Targets.....	6
1.3.3	Tahr / Vegetation Monitoring Activities .....	7
1.3.4	Kea Conservation Trust .....	7
1.4	Publicity.....	7
1.5	Health & Safety .....	8
1.6	Animal Management Plan Approvals .....	8
1.6.1	Project Management .....	8
1.6.2	Plan Objectives.....	9
1.6.3	Methods.....	9
1.6.4	Outcomes .....	10
1.6.5	End of year review .....	10
1.6.6	Recreational hunting.....	10
1.6.7	Funding.....	11
1.6.8	Documentation quoted.....	11
A.1	Map of proposed managed areas and landing sites – Makawhio / Jacobs Valley MU6 – Upper site.....	13
A.2	Map of proposed managed areas and landing sites – Makawhio / Jacobs Valley MU6 – Lower site.....	13
A.3	Map of proposed managed areas and landing sites – Mahitahi Valley MU6.....	14
A.4	Map of proposed managed areas and estimated landing site – Troyte Valley MU4a .....	14
A.5	Map of proposed managed areas and estimated landing site – Otoko Valley MU6.....	15
A.6	Map of proposed managed area and estimated landing site - Paringa / McCullaugh MU6....	15

## 1.1 Executive Summary

The New Zealand Tahr Foundation (NZTF) and the Department of Conservation (DOC) entered into a new 5-year Community Agreement in December 2024 (DOCCM-7886168). As a requirement of the Community Agreement the NZTF will continue to consult with DOC South Westland District staff and provide to the Director General an annual Tahr Management Plan (TMP). NZTF and DOC representatives met in Hokitika on November 14, 2024, to discuss the results of successful NZTF-led tahr population management work just completed in the Makawhio/Jacobs and Troyte Valleys and to discuss plans for the year or so ahead. This plan is to cover three planned hunting periods over the next 18 months. Thereafter plans will be annual to coincide with DOC's annual financial planning year. This plan covers NZTF-led tahr population management revisits where further tahr work is required in the Mahitahi, Makawhio / Jacobs Valleys and the Troyte (in WNP) as well as extending to 2 new sites in the Otoko Valley headwaters and the Paringa/McCullaugh HW, if funding, volunteer hunter availability and weather conditions permit.

## 1.2 Background

The New Zealand Tahr Foundation (NZTF) is a not-for profit organisation established in 2016 with the purposes: education, co-ordination among stakeholders, to manage Himalayan Tahr and acquire "Herd of special interest" (HOSI) status for the Tahr herd via the Game Animal Council Act 2013. A "HOSI" designation enables the management of game animal populations, subject to adequate environmental protection, for the purposes of hunting. However, the NZTF's key undertaking since 2018 has been to minimise the adverse impacts on the hunting sector of DOC's Tahr population reduction efforts, by advocating for effort to be directed and coordinated so that cultural and recreational values are maintained as far as possible. To achieve this goal and to reduce pressures on biodiversity, as outlined by the Te Mana o te Taiao Aotearoa Biodiversity Strategy 2020, effective tahr population management tools must be applied based on landscape attributes, animal behaviors and resource values at place.

A significant number of tahr have been removed from the feral range and exclusion zones over the past 6 years as a result of a directive of the Minister of Conservation to reduce tahr numbers closer to the intervention densities outlined in the "Himalayan Tahr Control Plan 1993" (HTCP). However, this has largely been undertaken by helicopter search & destroy which is not effective in scrub and bush areas, a significant component of tahr habitat in South Westland. Furthermore, sustained long term helicopter pressure from Search & Destroy, Aerial Assisted Trophy Hunting & Commercial carcass recovery & live capture may increase tahr occupation of bush & scrub habitat, increasing the

tahr impacts on biodiversity in these areas. It is apparent that management of tahr populations to reduce impacts on bush, scrub & fringe alpine vegetation requires ground-based hunting effort.

In January 2021, the NZTF identified pockets within the HTCP Management Unit 6 - Landsborough, specifically the Makawhio / Jacobs Valley, West Coast, where tahr browse impacts to thick vegetation and high female tahr densities were observable. The NZTF undertook a successful female tahr population management operation, "targeted harvest trial," during March 2022 and again in March 2023. In addition, the trial was extended to the upper Mahitahi valley in late February 2023. Hunts in both catchments were again targeted in 2024 and while some reinfestation from outside the targeted areas is a factor, adult female numbers taken seem to be reducing with some isolated areas of vegetation recovery. In addition, a new site in the Troyte in Westland national Park (WNP) was targeted for female reduction as it is a valued summer grazing area for trophy bulls from all the neighboring catchments and the alpine vegetation in the Troyte is still in great condition.

This plan aims to build on past successful "targeted harvest trials" by continuing hunter-led tahr population management within the South Westland district in the upper regions of the Makawhio / Jacobs, Mahitahi and Troyte Valleys as well as trial 2 new site in the Otoko and Paringa river headwaters where it is believed early intervention will help sustain both a viable hunting resource as well as maintenance of biodiversity values.

#### **Core activities planned for 2025/26**

Ground-based hunts 3-4 days will be undertaken at each of the sites listed below. Nanny group sizes and distribution will be recorded, and vegetation status subjectively assessed at each site. Tahr populations observed and vegetation recovery will inform if further population management is required in the years following at targeted sites.

#### **MAHITAHĪ (map - A3)**

One 3-4 day operation - observations indicate the lower tahr numbers and vegetation impacts suggest a quicker recovery to vegetation and trophy quality may be achievable in this valley with hunter-led population management. As there is quite a lot of bush to hunt a 3 person party is recommended.

Timing: March 2025, subject to volunteer availability and weather, otherwise Spring (Oct/Nov 2025).

- o Lower camp site – 3 hunters (1 helicopter flight in & out).



### **MAKAWHIO /JACOBS (map - A1 & A2)**

One 3-4 day operation at each site (upper and lower landing sites). The lower site is a more challenging place to hunt, due to the amount of bush cover. The upper site is less challenging to observe and engage animals but covers a much larger area and thus potentially suitable for more hunters. A new drop site has been identified to allow better coverage at dawn and dusk in the headwater.

Timing: **March 2025** for the upper basin: 2 Hunters for 3-4 days (1 helicopter flight in & out)

Again in late Feb to late **March 2026** for both the usual sites subject to hunter feedback.

- o Upper site – 2 x 2 hunter teams (1 team in the top basin, 1 at the upper landing site).
  - o Lower site – 2 hunters
- (2 helicopter flights in and out)

Subject to volunteer availability and weather

### **TROYTE (map - A4)**

The valley was identified as a bull stronghold and an important recreational hunting area, albeit difficult to access, but nanny populations need to be kept low to maintain good alpine vegetation to sustain a viable mature bull hunting resource which will continue to encourage recreational hunting in all the surrounding valleys.

Timing: Late October to late Mid November **2025** noting Operations Manager Franz Josef permission is required for this work in WNP.

- o Single site – 2 hunters (1 helicopter flight in and out). 3-4 days

### **OTOKO (map - A5)**

A proposed trial to reduce nanny numbers as they have been building at this site and it is proposed to provide intervention to prevent vegetation degradation while maintaining a viable and sustainable hunting resource.

Timing: March **2025** and likely again in March **2026**, subject to volunteer availability and weather.

- Ballot camp site – 2 or 3 hunters (1 helicopter flight in and out).

### **Paringa/McCullaugh (map - A6)**

A proposed trial to reduce the build up of nanny thar observed by NZTF members traversing the area over recent summers.

Timing: March **2025** subject to volunteer availability and weather.

- Landing / camp site outside the wilderness area by the saddle possible pick up in McCullaugh creek if approved – 2 hunters (1 helicopter flight in and out).

### 1.2.2 Management Targets

As per the NZTF Standard Operating Procedures it is preferred that only identifiable nannies and very small Kids unlikely to survive or thrive are to be shot.

To achieve the management targets experienced hunters will make up at least 2 of each 3-person party. 2-person parties will be experienced hunters only.

#### Seasonal milestones:

- Reduce adult female tahr populations in the Makawhio / Jacobs valley (as per A1 & A2 maps) and Mahitahi valley (as per A3 Map) as far as possible, acknowledging the bush clad environment and difficulty hunting these areas.
- Reduce adult female tahr populations in the Troyte valley to encourage improved bull habitat to support local recreational hunting values.
- Reduce adult female tahr populations in the Upper Otoko valley to encourage improved bull habitat to support recreational hunting values.

*Note: the window for late summer - autumn management is short. Seasonal milestones are to be met by the end of March leaving April free for hunters and residual tahr populations time to settle before the recreational rut ballots begin and commercial activities are permitted. Likewise Spring harvest conditions and timing are also short due to spring snow melt, river and avalanche risk and then kid drop. Spring opportunities maybe taken when conditions and hunter availability permit.*

#### Ground-based management criteria 2025/26

- Mature nannies and very late born/small kids only to be shot
- Good shot placement
- Non-toxic (lead free) ammunition
- Track logs to be recorded during hunting or drawn on map after each hunt should equipment failure occur.
- Record locations and numbers of tahr harvested onto the NZTF App or GPS
- Photograph kills able to be accessed without risk or significant time wasting
- Record numbers and approx. age /sex of observed of non-target animals
- Vegetation assessments to be conducted using the NZTF App or Camera.
- Volunteers are encouraged to salvage meat where possible and sensible and where it does not impact significantly on hunting efficiency.

### **1.2.3 Tahr / Vegetation Monitoring Activities**

Vegetation monitoring in both alpine and forest habitats is the responsibility of DOC. However, the NZTF hunters on site for management operations will take notes and photographs of vegetation status and establish and record any agreed photo monitoring points. Further collaboration between NZTF and DOC for improved environmental monitoring is anticipated. DOC have established a photo point in the head of the Jacobs NZTF will take photos at this site when visiting if the location is shared.

(DOC will make available any relevant vegetation or tahr monitoring results to NZTF annually)

#### **Photo point monitoring**

Objective: Establish fixed sites and direction in selected locations within operational areas to monitor vegetation response to management activities.

Outcomes: Data and images gathered to be made available to NZTF membership and DOC South Westland District Staff. Analysis of this information used to help develop future tahr management plans.

### **1.2.4 Kea Conservation Trust**

As part of the ongoing collaboration between the NZTF, the Kea Conservation Trust and the Game Animal Council, hunters operating under this plan will be required to record kea observations on the NZTF App or via surveys provided by DOC. The Project manager will enter data onto the KCT site following each seasons site visits.

## **1.3 Publicity**

The NZTF will from time to time gather material from activities associated with this management plan in the form of still and motion pictures to promote the relationship between the NZTF and DOC, and encourage recreational hunters to become engaged with tahr management.

Specific details of individual animals and locations will not be made available but reports and more general findings may be made public from time to time.

Where publicity relevant to management activities within the context of this plan mentions DOC specifically, an opportunity to provide comment on publications prior to release will be afforded to DOC. Equally, an opportunity to provide comment will be afforded to the NZTF for any publicity to be released by DOC relevant to management activities within the context of this plan.

## 1.4 Health & Safety

All volunteers will be given a health and safety briefing before departure as per the Community Agreement DOC approved Health & Safety plan. Once on site the team will have a toolbox talk to identify and discuss any on site issues identified. In addition, hunters will abide by the following:

- Each hunter will be required to carry a 1st aid kit and each party hold a more comprehensive 1st aid kit at the tent base camp.
- Each morning the teams will confirm where they are going to hunt and expected routes of travel and return.
- Each hunter will be required to carry either a Personal Locator beacon or an In-Reach device.
- Each party will have at least 1 in- Reach device so they can communicate with the NZTF Operational Lead as required or pilot directly if necessary.
- Each hunter will be required to wear at least one hi-vis piece of clothing when hunting and away from camp.
- Immediately after returning from each trip volunteers are required to report to the NZTF Operational Lead, confirm their safe return and report any incidents.
- The Operational Lead will then advise DOC that everyone has safely returned or of any incidents.

## 1.5 Animal Management Plan Approvals

The Community Agreement between DOC and NZTF is made pursuant to section 53(2) (i) of the Conservation Act 1987 and grants approval for NZTF to undertake a Community Group Animal Management Programme, using experienced recreational ground hunters, to manage the environmental impacts of tahr through the removal of excessive numbers of adult nannies.

Schedule 1 of the agreement required NZTF to submit an annual plan for approval (sect. B) and if approved an approval for a specific helicopter operator to undertake to drop off and pick up flights (sect. A).

This Tahr Management Plan shall be approved by the Department of Conservation and may include conditions or restrictions on activities and, monitoring and recording.

This Plan provides details of the program's key operational objectives, methods and outcomes.

### 1.5.1 Project Management

Project team for this Tahr Management Plan for the NZTF:

- s.9(2)(a), Operational Lead

- s.9(2)(a), Hunter Liaison (Field teams Contact)
- s.9(2)(a) Project Manager

Key contacts for this Tahr Management Plan within DOC South Westland District Office:

- Gary Scott, Supervisor, Operations
- Wayne Costello, South Westland Operations Manager
- Damien Bromwich Operations Lead - Wild Animals
- Tom Brookman, Programme Lead, Tahr

### 1.5.2 Plan Objectives

The primary aim of this Plan is to facilitate volunteer hunter-led management of tahr populations in areas with high recreational value and where aerial control of tahr is ineffective or detrimental, or / and unacceptable tahr impacts are observable and tahr populations are considered too high.

This Tahr Management Plan reflects the requirements of the Management Agreement and is a formal plan prepared for tahr population management within localized areas with the aim to reduce pressures on biodiversity and support a sustainable hunting resource.

### 1.5.3 Methods

Ground-based hunting using experienced hunters, tent or fly camping from established sites using non-toxic ammunition with predominantly .223 rifles. Short magnum or equivalent calibers with copper projectiles may also be used for any identified sites requiring longer range shooting.

Positioning flights will be made at the direction of the Project Manager using landing sites approved in this plan and approved DOC Helicopter operators.

Tahr will be targeted primarily in forest, scrub slips and open creek bed zones, but also at bush / scrub margins with alpine vegetation. Some recovery of meat will be undertaken where practical.

Photographs of shot animals will be taken where possible but this will be only where it is safe to do so and not detrimental to shooting more animals (i.e. time wasting or scenting up areas).

Locations of all animals seen & shot will be recorded on the NZTF App, with age of oldest animals noted, either in real time or in the evening upon returning to camp using GPS points, whichever matches the hunters' technical skills and equipment.

#### **1.5.4 Outcomes**

The average number of nannies shot per hunter hour will be used as a means of monitoring progress along with comparison of previous years efforts and observations. Ideally the number of nannies shot will reduce at each site following recurrent management operations and then stabilize. Indications of a positive vegetation response would also be ideal, though this may take several years to become apparent due to the slow recovery and growth of some preferred species.

As this programme becomes more established, measuring change in browse impacts of established vegetation monitoring sites could be used to assess whether the aim of reducing pressure on biodiversity is being achieved or not. Similarly, monitoring recreational and commercial hunter harvest, e.g. quality and quantity of bulls seen &/or harvested, could be used to assess whether the aim of maintaining recreational values is being achieved or not.

Field records and observations collected will be included within the annual report aimed to be submitted to DOC South Westland District Office by the end of August 2026.

#### **1.5.5 End of year review**

Results will be documented in a report aimed to be prepared for NZTF committee review by July 31, 2026. The report will cover:

- Seasonal weather conditions during each cull
- Hunter effort
- Changes in the number of tahr shot per hour from previous year (Jacobs)
- The number and location of nannies taken during the cull
- Numbers of tahr observed but not shot (sex, approx. age, group size)
- Non-target animals observed
- Vegetation observations and any relevant photographs
- Kea & Whio observations
- Other biodiversity Observations

#### **1.6.6 Recreational Hunting**

Objective: Continue to provide quality recreational tahr hunting opportunities in New Zealand mountains as it has no equal in the world.

- Encourage recreational hunters to hunt tahr and contribute to population management using best practice guidelines.

- Encourage recreational hunters to complete kill/observation returns via the Tahr Foundation App to collate a record of all tahr harvested (as far as possible) and monitor tahr population trends. These figures will be considered in the development of future tahr management activities.
- Support improved management of the annual Tahr Wilderness Ballot for maximising the benefits it provides to both biodiversity and recreational hunting values.

Method: Recreational hunting permits for the annual Tahr Wilderness Ballot are issued by DOC. However, the NZTF has expressed an interest in supporting future ballots with the objective of improving outcomes for recreational and biodiversity. Specifically by being involved in the decisions on use of net revenue, minimising operating costs to increase net revenue and maximising the value of the tahr resource for increased and sustained net revenue.

None of the areas to be hunted in this plan are proposed to be closed to hunting permits, as apart from the Troyte, it is accepted they are largely inaccessible outside of the Wilderness access ballot.

Note: The Karangarua is an important recreational hunting area as Christmas Flat has recreational helicopter access (one of only 2 approved in the current Westland National Park management plan). As the Troyte is accessible, albeit with some difficulty from the Karangarua, we suggest a notice of the operation is put in the Christmas Flat hut, and that the operation is notified through DOC's Permitting web site under hunter information for the Karangarua valley. Also, that the DOC contact person advises V.C. staff at Franz and Fox in case of hunter enquiry. Noting that James Scott will be aware of the NZTF intentions should he be flying any parties into Christmas Flat.

#### **1.6.7 Funding**

As discussed at the Annual Planning meeting with DOC, funding has been an issue for the NZTF to undertake these management hunts

While some funding sources are in sight, NZTF may seek some support still from DOC for specific hunts if funds at the time of planned operations are insufficient. DOC will continue to provide non-toxic ammunition in common calibers or access to ammunition components for NZTF handloading.

#### **1.5.8 Documentation quoted**

- Annual planning meeting notes of the NZTF & DOC (Hokitika) 14/11/2024
- Draft Community Agreement December 2024 between the New Zealand Tahr Foundation and the Director General of Conservation (DOC)
- Himalayan Thar Control Plan 1993
- NZTF Health and Safety Plan Approved by DOC

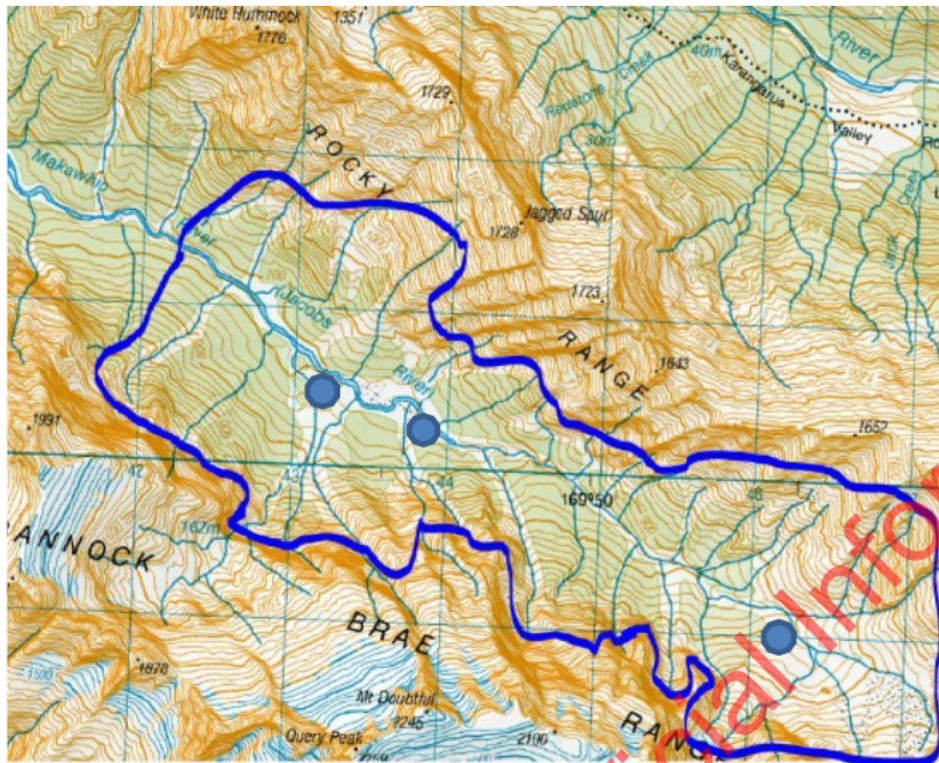
- NZTF Target Harvest Trial Report 2024
- NZTF Standard Operation Procedures
- Te Mana o te Taiao Aotearoa New Zealand Biodiversity Strategy 2020

**Maps Below**

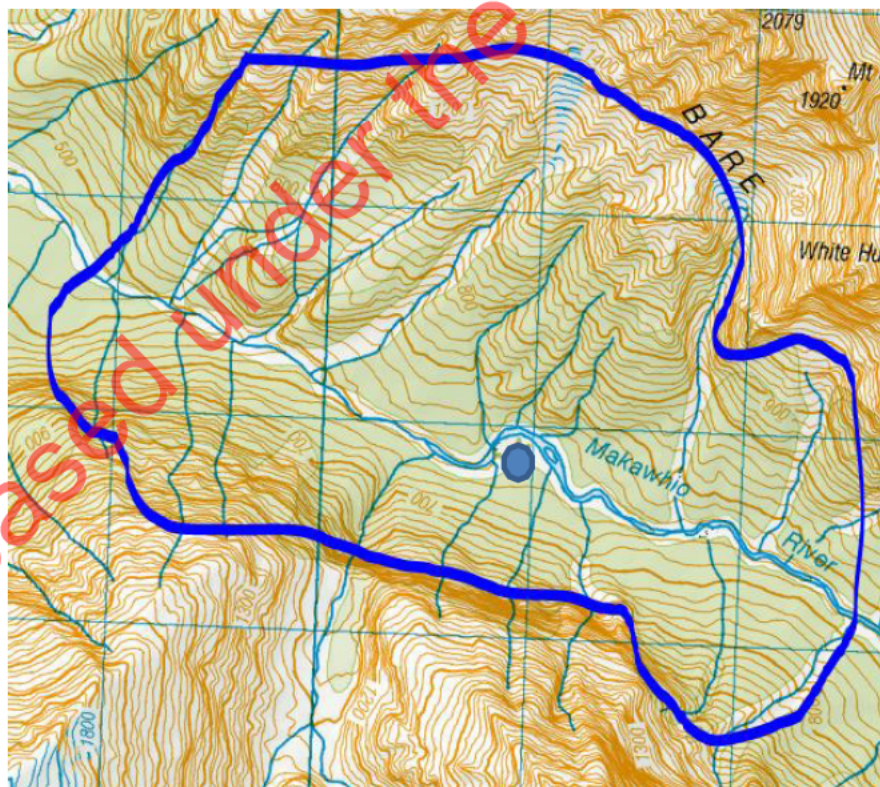
Released under the Official Information Act



**A.1 Map of proposed managed areas and landing sites – Makawhio / Jacobs Valley MU6 – Upper site**

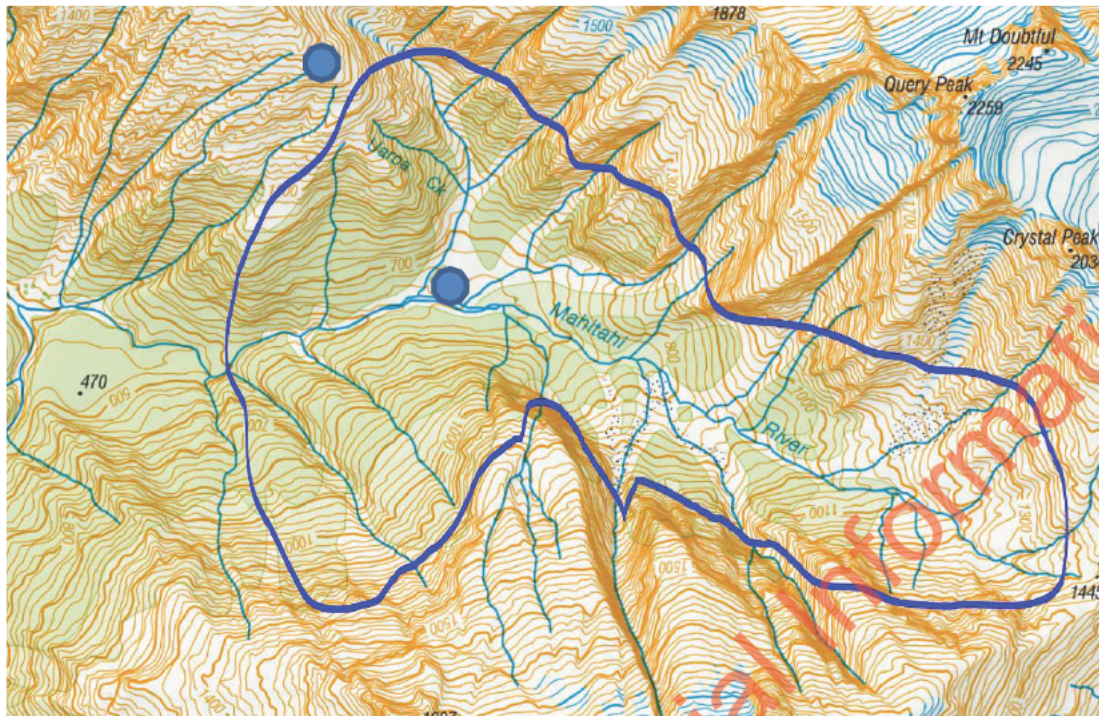


**A.2 Map of proposed managed areas and landing sites – Makawhio / Jacobs Valley MU6 – Lower site**

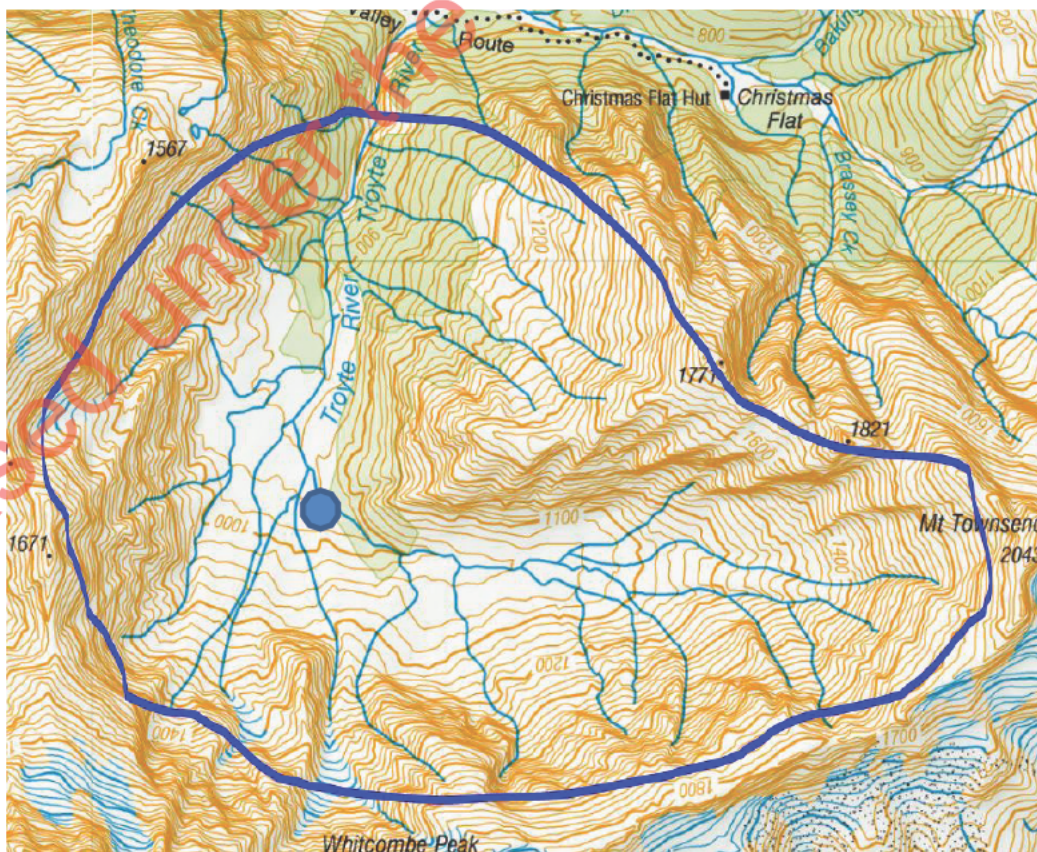




**A.3 Map of proposed managed areas and landing sites – Mahitahi Valley MU6**

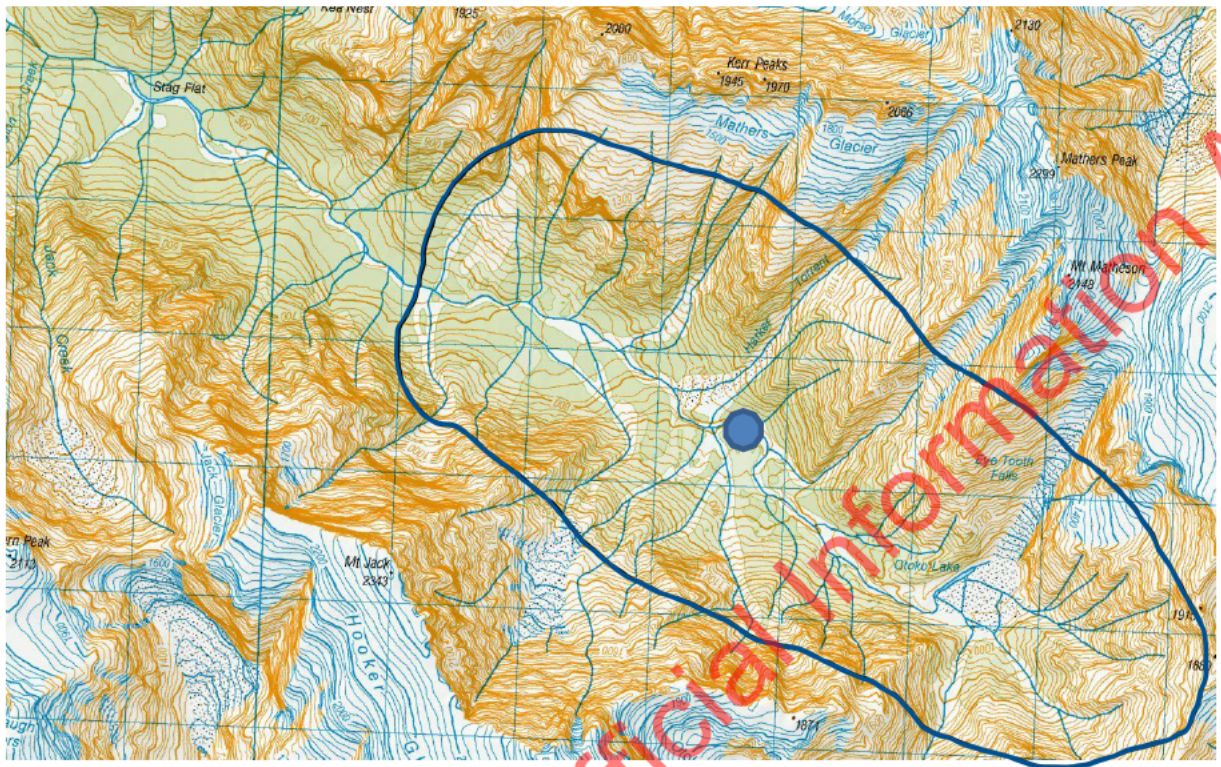


**A.4 Map of proposed managed areas and estimated landing site – Troyte Valley MU4a**





## A.5 Map of proposed managed areas and estimated landing site – Otoko Valley MU6



## A.6 Map of proposed managed areas and estimated landing site – McCullaugh/Paringa

