

DOC National office
18 Manners Street
Wellington 6011
www.doc.govt.nz
Ref: OIAD-4921

Tēnā koe

Thank you for your request to the Department of Conservation, received on 17 February 2025, in which you asked for:

1. *A regional breakdown of how many DOC staff are trained as fire crews.*
2. *National and Northland-specific organisational charts for fire suppression roles.*
3. *Uniform guidelines for DOC fire crews, if these guidelines exist.*
4. *Rank guidelines for DOC fire crews, if these guidelines exist.*
5. *Northland register of DOC vehicles and equipment available for fire suppression duties.*

We have considered your request under the Official Information Act 1982.

Your questions and our responses are listed below:

1. *A regional breakdown of how many DOC staff are trained as fire crews.*

We do not specifically identify crews, as the number of fire fighters and crew leaders vary depending on the resources required. We can, however, provide the number of staff trained at various levels in the organisation. A table is set out as Appendix1 and refers to:

- TS1 (Trained for fireground entry)
- TS2 (Trained Fire Fighter)
- TS2A (Trained Pump operator)
- TS3 (Trained Crew Leader)

2. *National and Northland-specific organisational charts for fire suppression roles.*

There is no Northland-specific organisational chart for fire suppression roles. There is one national organisational chart which is based on the New Zealand Co-ordinated Incident Management System. A graphic of this organisational structure is attached as Appendix 2. Appointment to these positions is made by the Incident Controller as required.

3. *Uniform guidelines for DOC fire crews, if these guidelines exist.*

DOC uniform guidelines are attached as Appendix 3. These guidelines do not include the NZ/AUS or EU standards which define the uniform manufacturing requirements.

4. *Rank guidelines for DOC fire crews, if these guidelines exist.*

The Department of Conservation does not use a “rank” system. Positions are as structured and defined in the answer to question 2, set out in Appendix 2.

5. *Northland register of DOC vehicles and equipment available for fire suppression duties.*

- The register of Northland vehicles available for fire suppression duties is set out in Appendix 4.
- The Department of Conservation does not hold a register of equipment, other than those vehicles referenced above, for fire suppression duties as all Department of Conservation Fire Fighting assets were transferred to Fire and Emergency NZ (FENZ) under agreement on 10 May 2019. FENZ are the fire authority for all public conservation land, and the Department supports FENZ in this function. Any fires that start or develop on public conservation land will be controlled by FENZ under their authority, and DOC will support them with FENZ supplying equipment for DOC crews to utilise. I am therefore refusing this part of your request under section 18(e) of the Official Information Act 1982, as the document containing the information does not exist.

You are entitled to seek an investigation and review of my decision by writing to an Ombudsman as provided by section 28(3) of the Official Information Act.

Please note that this letter (with your personal details removed) and attached documents may be published on the Department’s website.

Nāku noa, nā

Alastair Johnstone
Director National Operations
Department of Conservation
Te Papa Atawhai

Appendix 1

Position	Totals	North	South	AKL	CNI	ENI	ESI	HWT	LNI	NNI	NSI	SSI	WSI
TS1	90	40	50	10	6	0	24	6	10	8	5	18	3
TS2	210	96	114	8	17	20	39	14	23	14	19	48	8
TS2A	90	52	38	4	8	12	5	14	10	4	6	16	11
TS3	82	41	41	4	9	9	17	8	6	5	10	12	2

“Totals” column is a national total

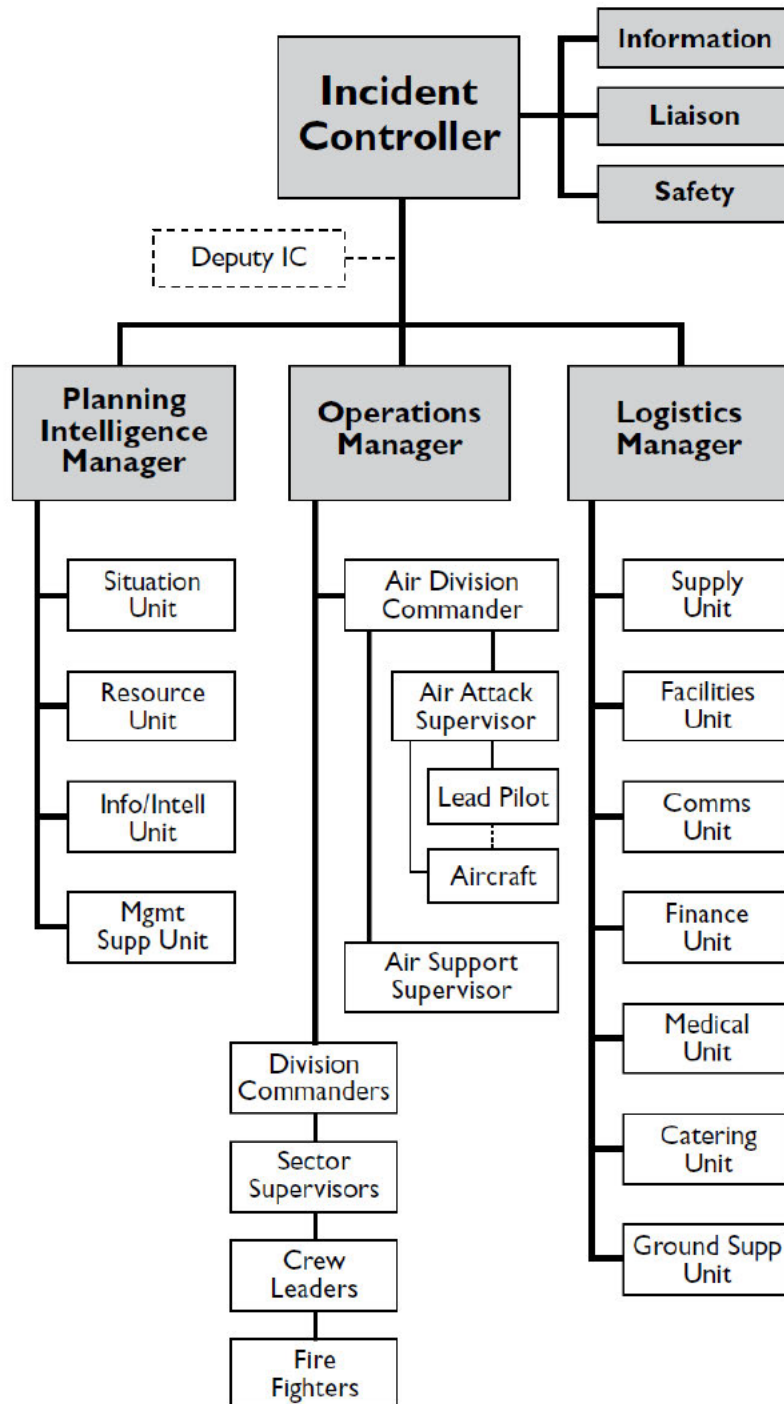
“North” column represents the North Island Only

“South” column represents the South Island Only




The regional references in the above table refer:

- *Auckland Region – AKL*
- *Central North Island Region – CNI*
- *Eastern North Island Region - ENI*
- *Eastern South Island Region - ESI*
- *Hauraki Waikato Taranaki Region - HWT*
- *Lower North Island Region - LNI*
- *Northern North Island Region - NNI*
- *Northern South Island Region - NSI*
- *Southern South Island Region - SSI*
- *Western South Island Region - WSI*

Appendix 2



Appendix 3

FIRE WORK PPE MATRIX				
		MANDATORY TO WEAR	MANDATORY TO CARRY	OPTIONAL USE
FIRELINE TASKS Including all wildfires, prescribed burning and fire training 		General Fire Line Duties <ol style="list-style-type: none"> 1. Fire-fighter Overalls 2. Protective Helmet c/w neck flap 3. Fire-fighter Boots 4. L5 Hearing protection (pump operators) Chainsaw Operators <ol style="list-style-type: none"> 1. Safety Chaps 2. Protective Helmet 3. Face Visor (protective helmet accessory) 4. Hearing Protections 5. Fire-fighter Overall 6. Steel toe safety work boots 	+	General Fire Line Duties <ol style="list-style-type: none"> 1. Smoke Goggles 2. FR (ARC) Mask 3. Gloves 4. Drink Bottle 5. Laminated Pink Card 6. Personal First Aid Kit
FIRE SUPPORT TASKS 		Bucket Filling Crew <ol style="list-style-type: none"> 1. Wet weather gear 2. Helmet with chinstrap to be worn 3. Fire-fighter Boots or Approved rubber boots 4. Hearing Protection (L5) 	+	Bucket Filling Crew <ol style="list-style-type: none"> 1. Protective Gloves/Goggles (mandatory if chemicals in use)
FIRE SUPPORT TASKS 		Retardant Mixing Crew <ol style="list-style-type: none"> 1. Disposable Overalls or Fire-fighter overalls 2. Fire-fighter Boots for powdered retardant or Approved Rubber Boots for liquids 3. Gloves and goggles 	+	Retardant Mixing Crew <ol style="list-style-type: none"> 1. Protective Helmet
				General Fire Line Duties <ol style="list-style-type: none"> 1. Sunscreen 2. Torch 3. Green Book (mandatory for response team leader) 4. Portable radio harness
				Bucket Filling Crew <ol style="list-style-type: none"> 1. Safety Sunglasses 2. Barrier Cream 3. Sunscreen 4. Spare overalls / socks / clothing.
				Retardant Mixing Crew <ol style="list-style-type: none"> 1. Safety Sunglasses 2. Broad-brimmed sun hat 3. Sunscreen

Appendix 4

Office	Year	Vehicle Type	Powertrain
NNI_Bay_of_Islands	2011	Ute	ICE
NNI_Bay_of_Islands	2012	Ute	ICE
NNI_Whangarei	2013	Ute	ICE
NNI_Bay_of_Islands	2014	Ute	ICE
NNI_Whangarei	2015	Ute	ICE
NNI_Whangarei	2015	Ute	ICE
NNI_Kaitaia	2018	Ute	ICE
NNI_Bay_of_Islands	2018	Ute	ICE
NNI_Kaitaia	2018	Ute	ICE
NNI_Kaitaia	2018	Ute	ICE
NNI_Kaitaia	2018	Ute	ICE
NNI_Kaitaia	2018	Ute	ICE
NNI_Whangarei	2018	Ute	ICE
NNI_Whangarei	2018	Ute	ICE
NNI_Kauri_Coast	2022	Ute	ICE
NNI_Kauri_Coast	2022	Ute	ICE
NNI_Kauri_Coast	2022	Ute	ICE
NNI_Whangarei	2022	Ute	ICE
NNI_Whangarei	2022	Ute	ICE
NNI_Bay_of_Islands	2022	Ute	ICE
NNI_Kaitaia	2022	Ute	ICE
NNI_Kauri_Coast	2023	Ute	ICE
NNI_Kauri_Coast	2023	Ute	ICE
NNI_Bay_of_Islands	2020	Car	Plugin Hybrid
NNI_Kaitaia	2020	Car	Non-Plugin Hybrid
NNI_Kauri_Coast	2021	Car	EV
NNI_Whangarei	2021	Car	EV
NNI_Whangarei	2021	Car	EV
NNI_Whangarei	2021	Car	EV
NNI_Whangarei	2021	Car	EV
NNI_Whangarei	2021	Car	EV
NNI_Kauri_Coast	2021	Car	EV
NNI_Bay_of_Islands	2021	Car	EV
NNI_Kaitaia	2021	Car	EV
NNI_Bay_of_Islands	2021	Car	EV

