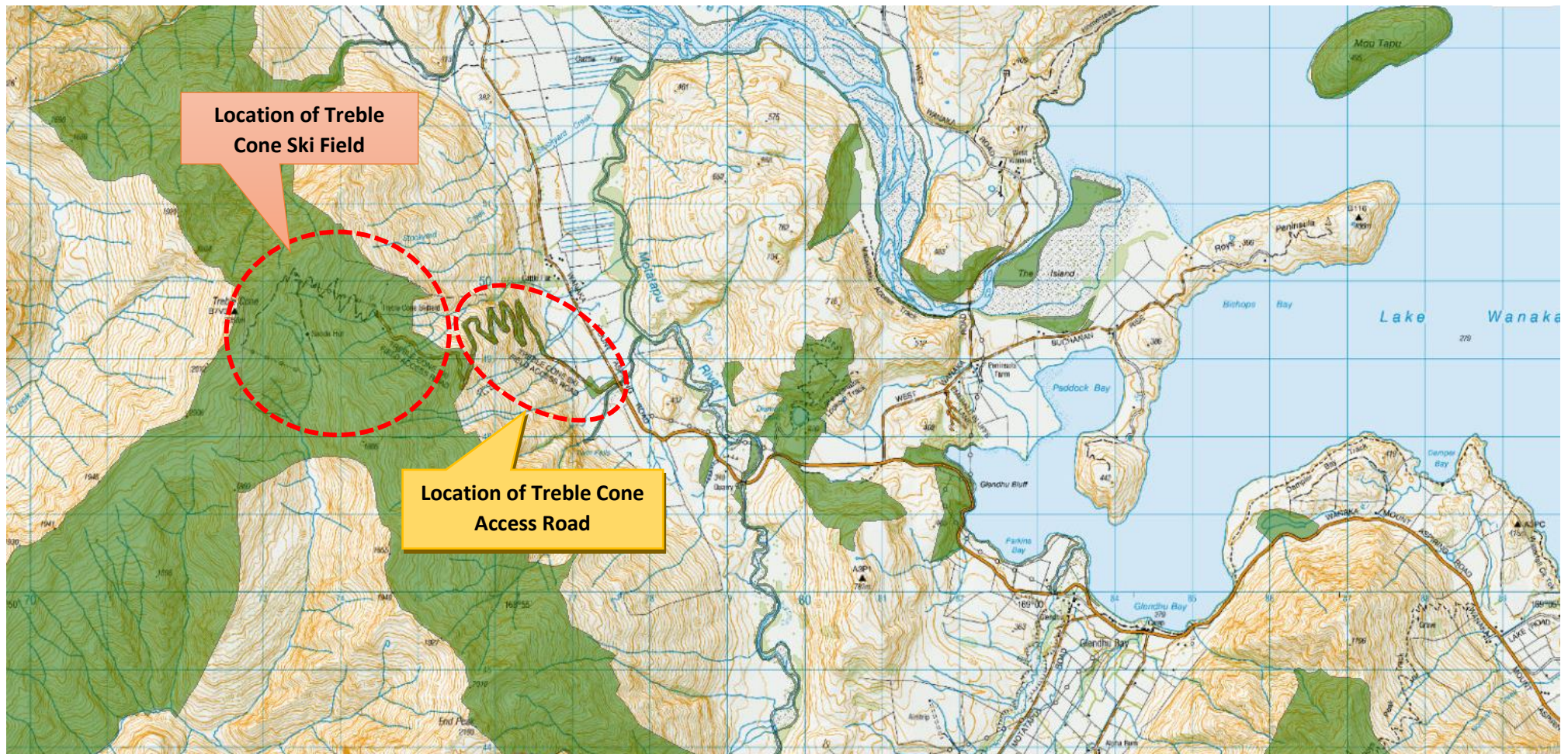


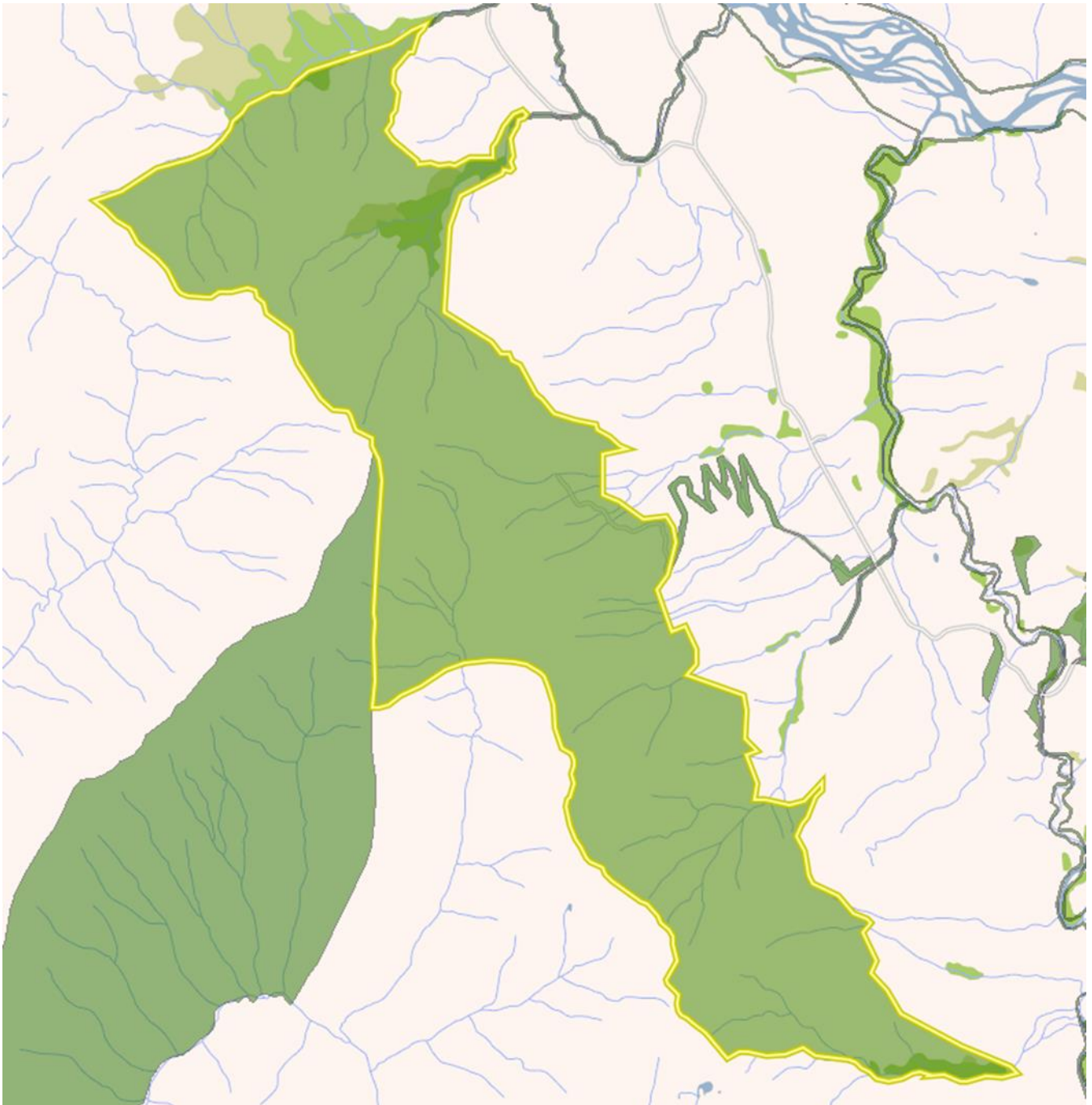
Appendix IV - Treble Cone Concession Applications – Maps and Diagrams

Figure 1: Site Map



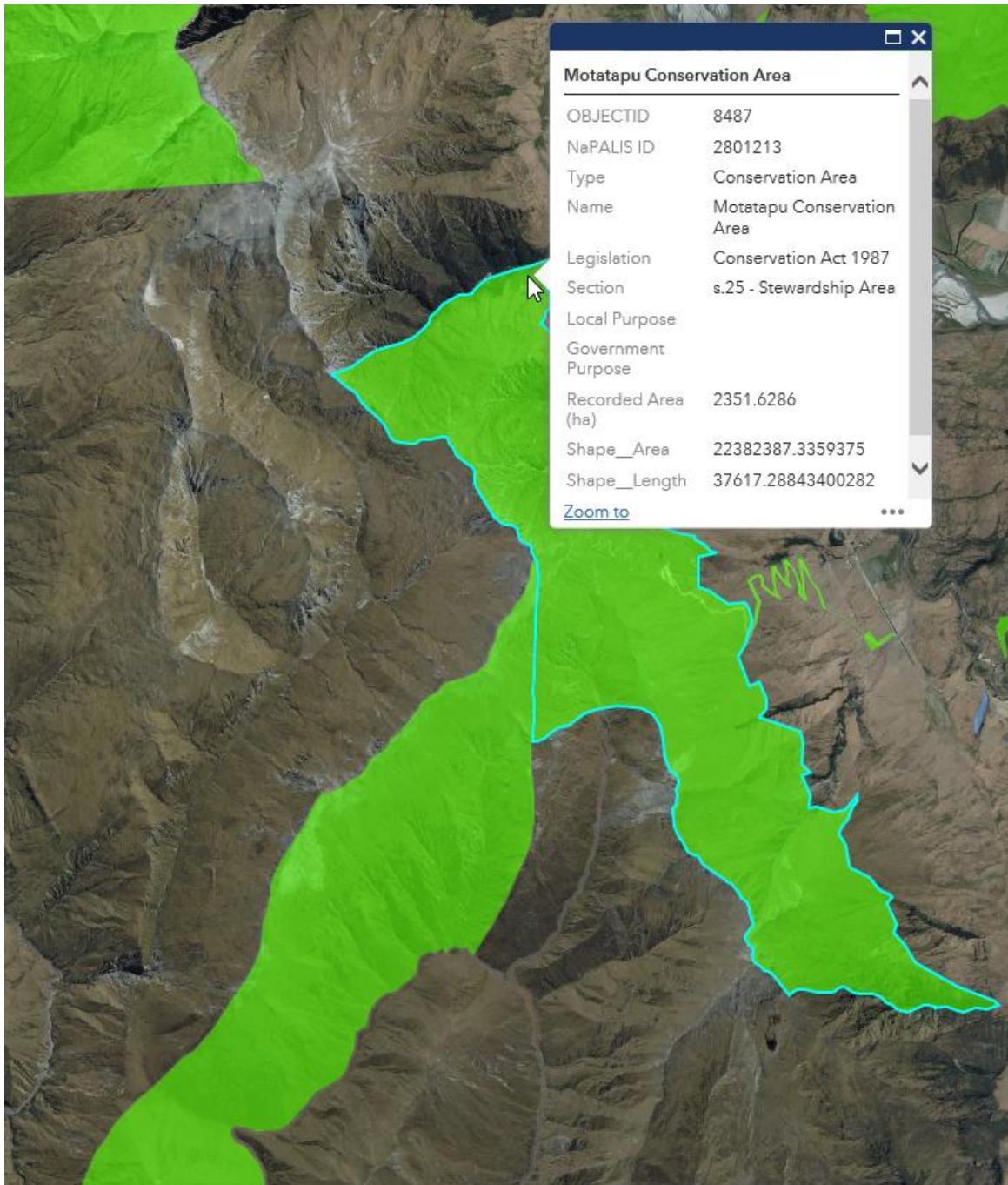
<http://maps.doc.govt.nz/mapviewer/>

Figure 2: Motatapu Conservation Area – where most of Treble Cone Ski Field is located



<http://maps.doc.govt.nz/mapviewer/>

Figure 3: Motatapu Conservation Area – where most of the Treble Cone Ski Field is located



<http://qldc.maps.arcgis.com/apps/webappviewer/index.html?id=fe81f015fb1f44c48837f29b5f8a887c>

Figure 4: North Motatapu Conservation Area – where top of Quad Lift is located

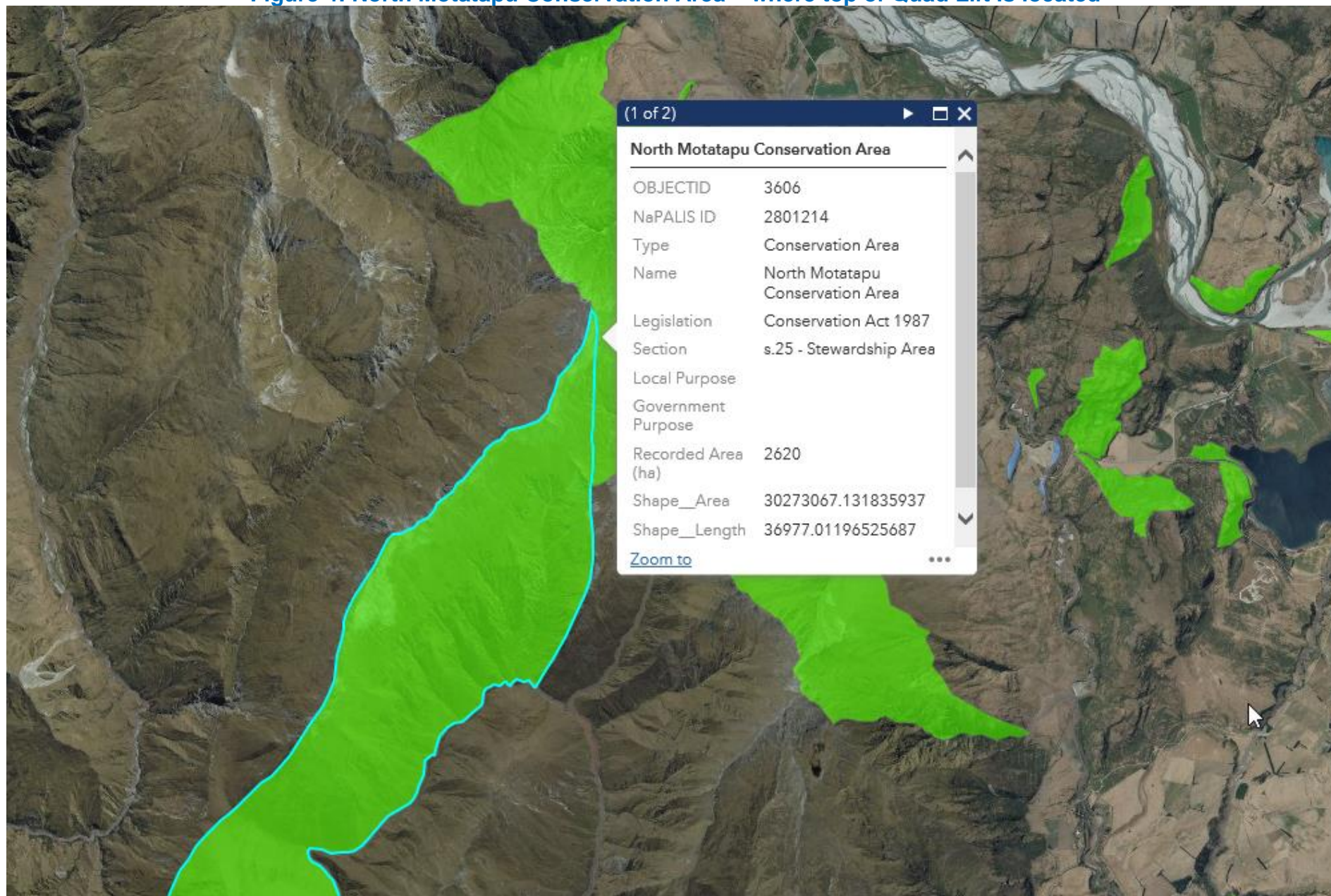


Figure 5: North Motatapu Conservation Area incl location of the top of the quad lift

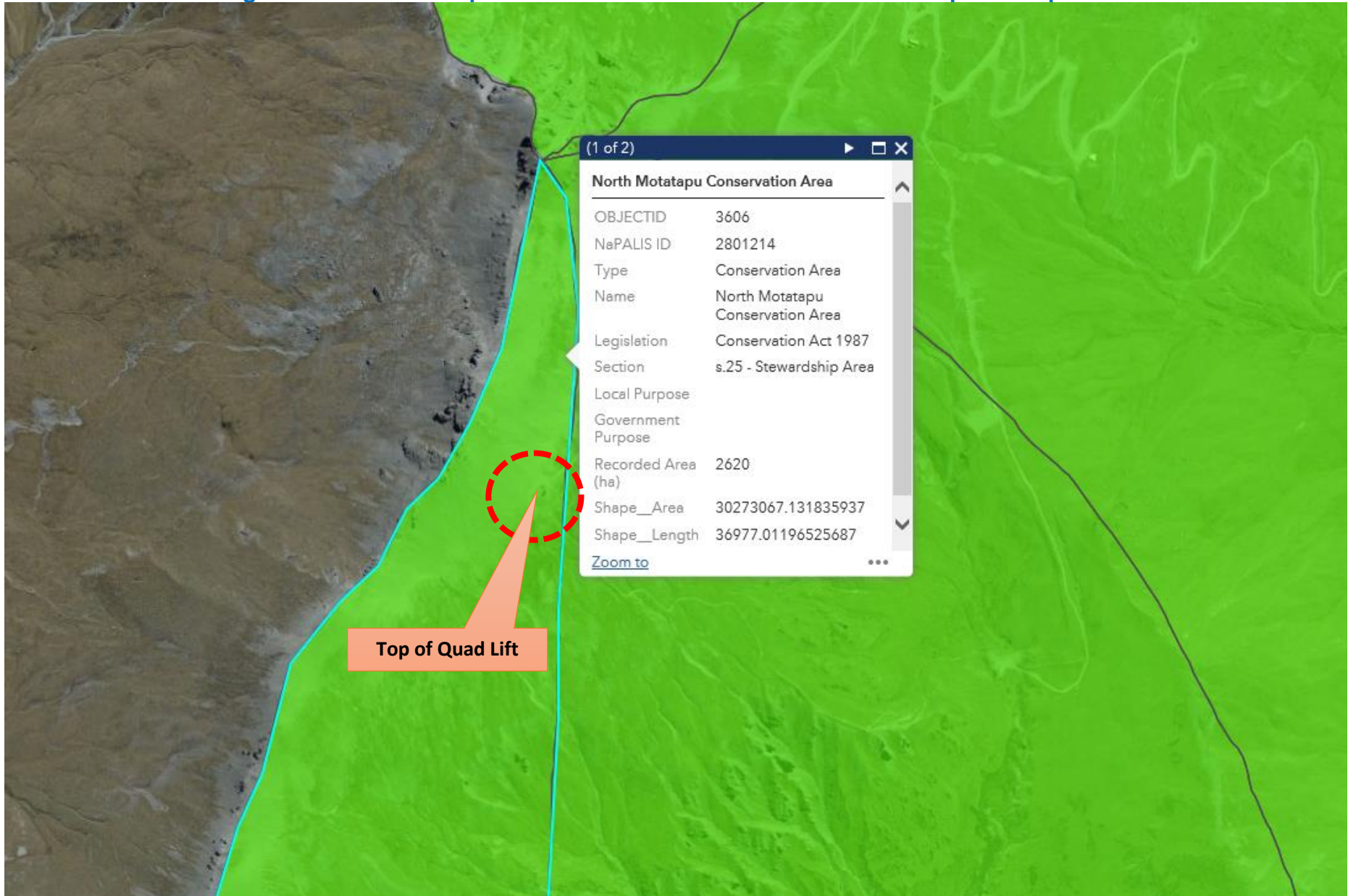
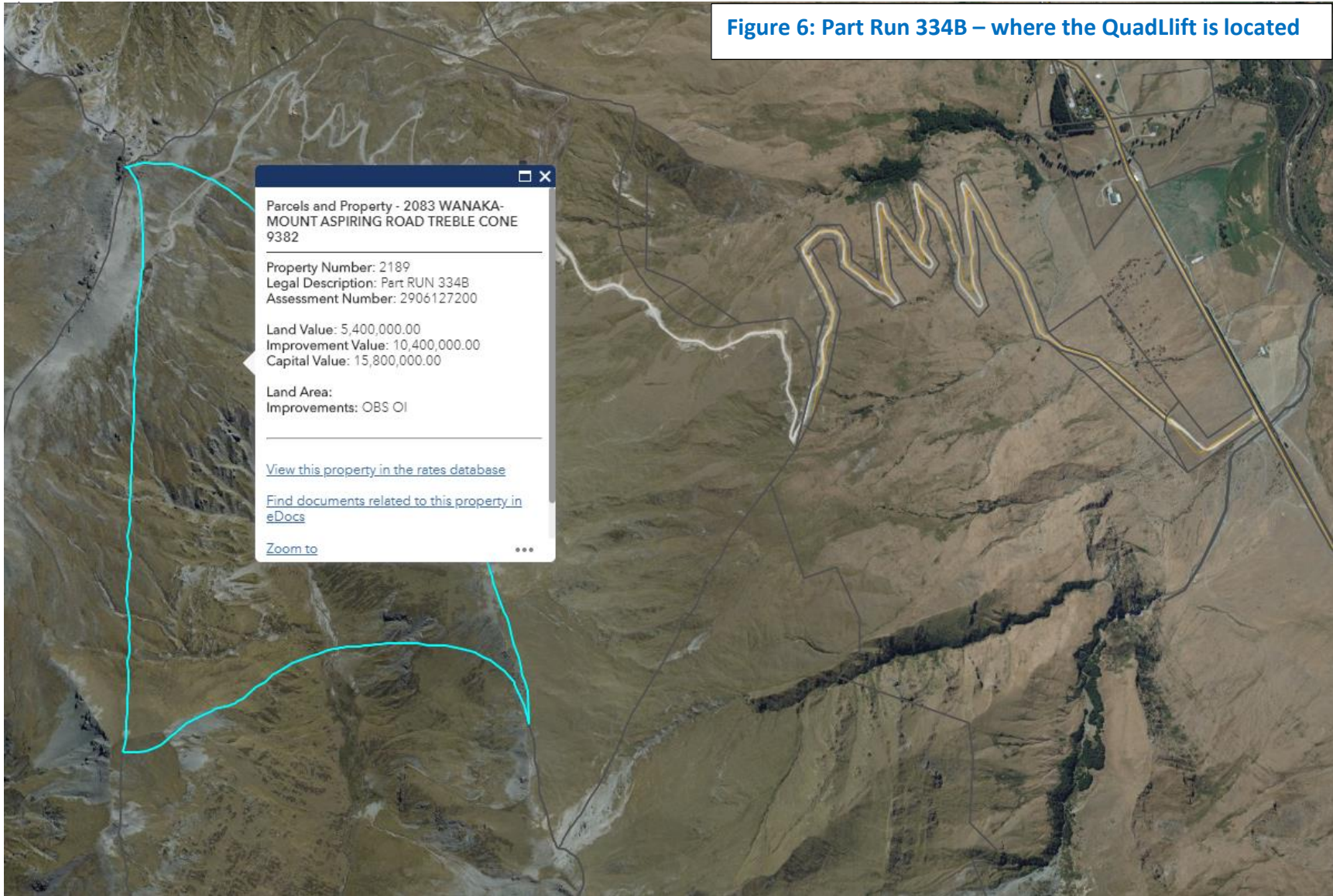


Figure 6: Part Run 334B – where the QuadLift is located



<http://qldc.maps.arcgis.com/apps/webappviewer/index.html?id=a421fcd415994785b1614390aa8d34e6>

Figure 7: Part Run 333A – where the Home Basin the Express Lift is located

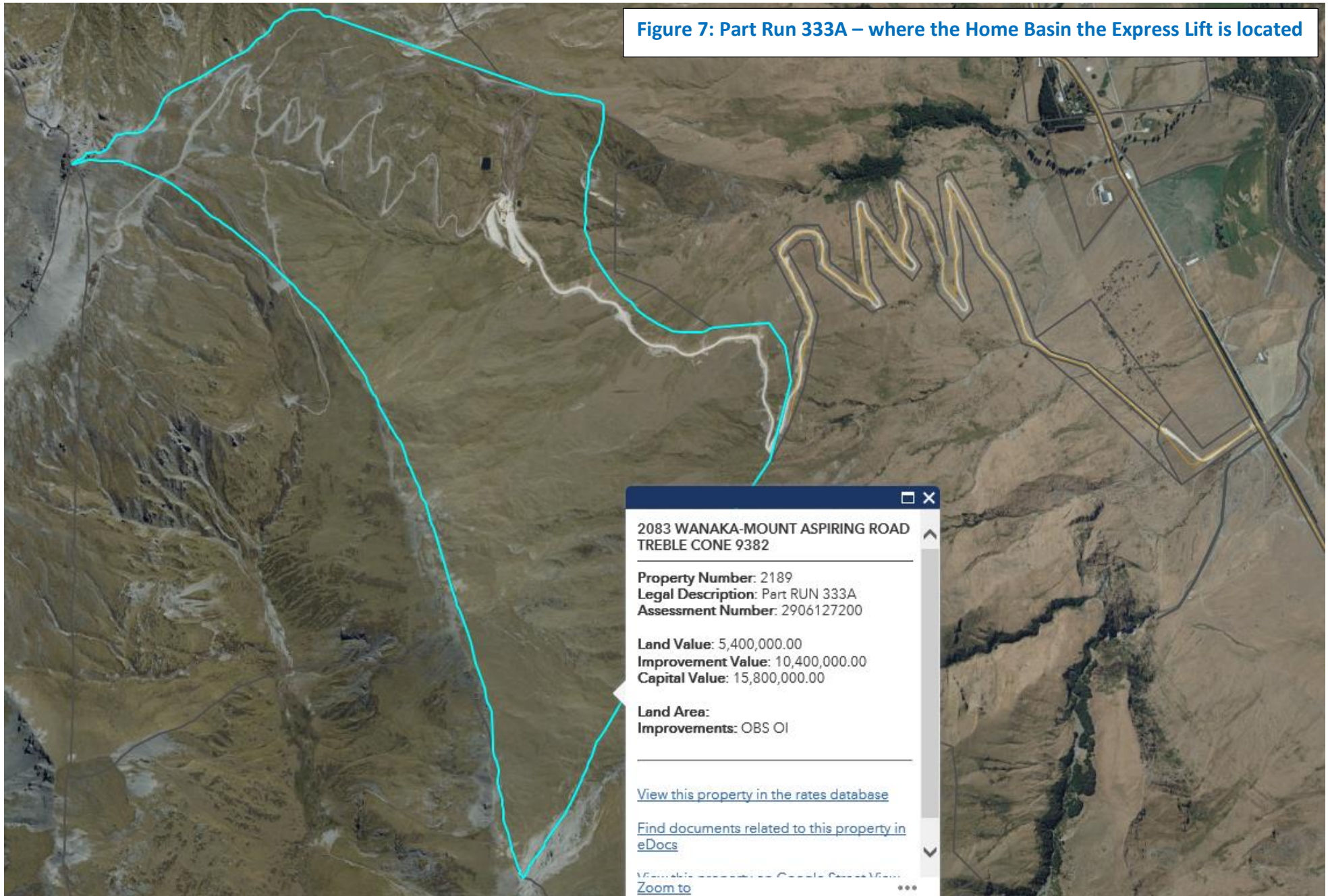


Figure 8: Section 12 SO 367599 – the mid section of the access road

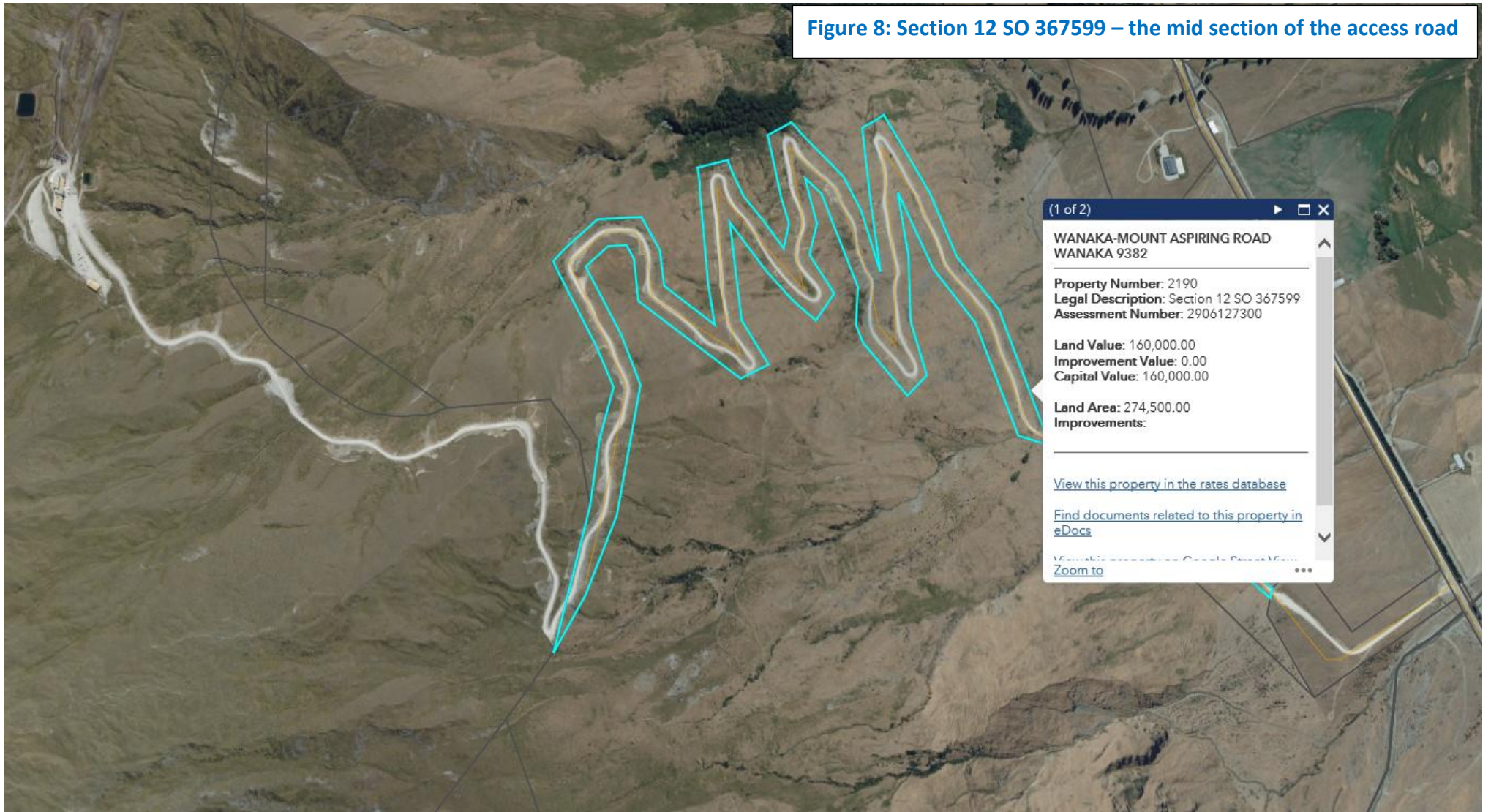
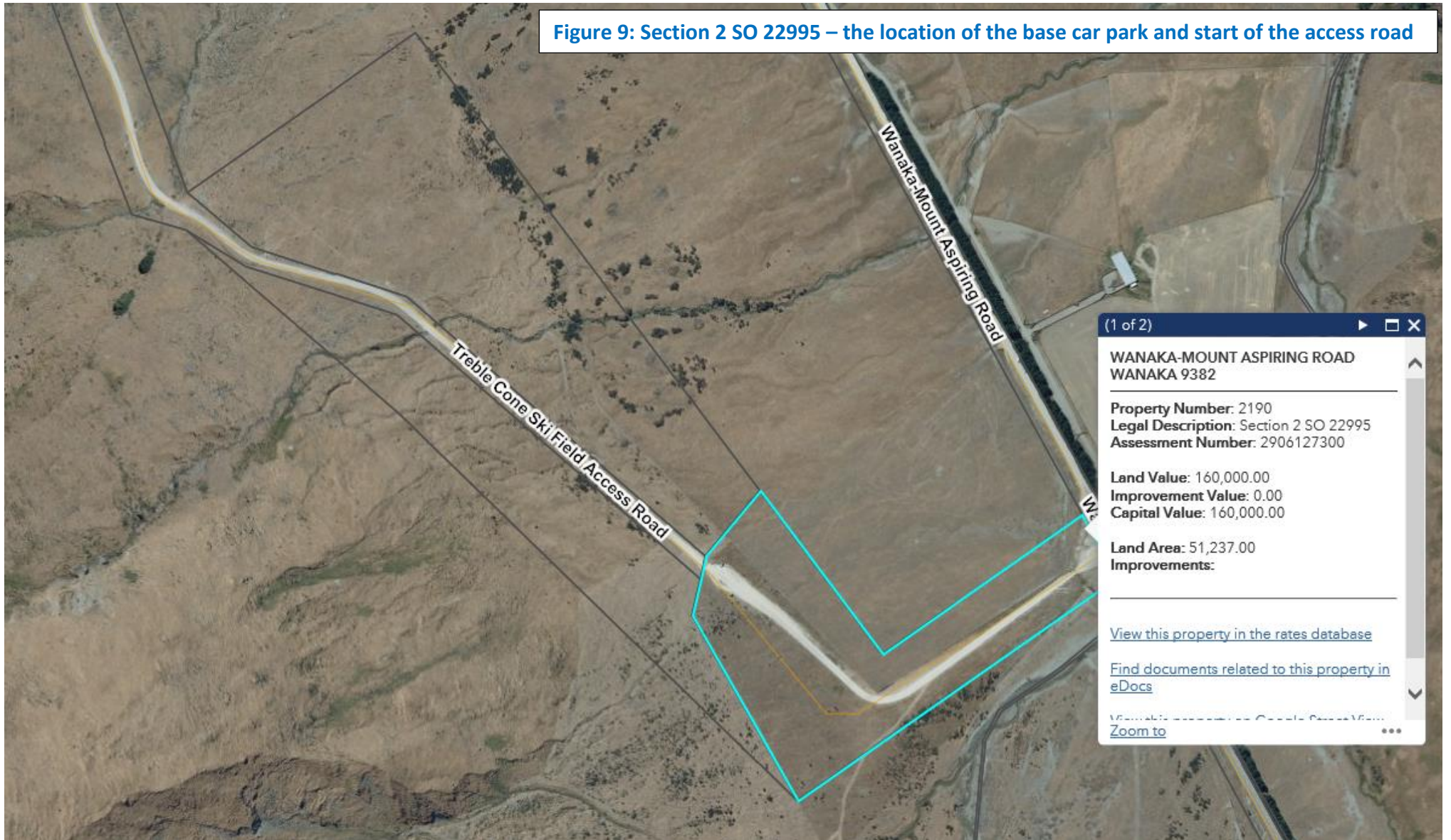


Figure 9: Section 2 SO 22995 – the location of the base car park and start of the access road



<http://qldc.maps.arcgis.com/apps/webappviewer/index.html?id=a421fcd415994785b1614390aa8d34e6>

Figure 10: Main Ski Field Current Lease Area

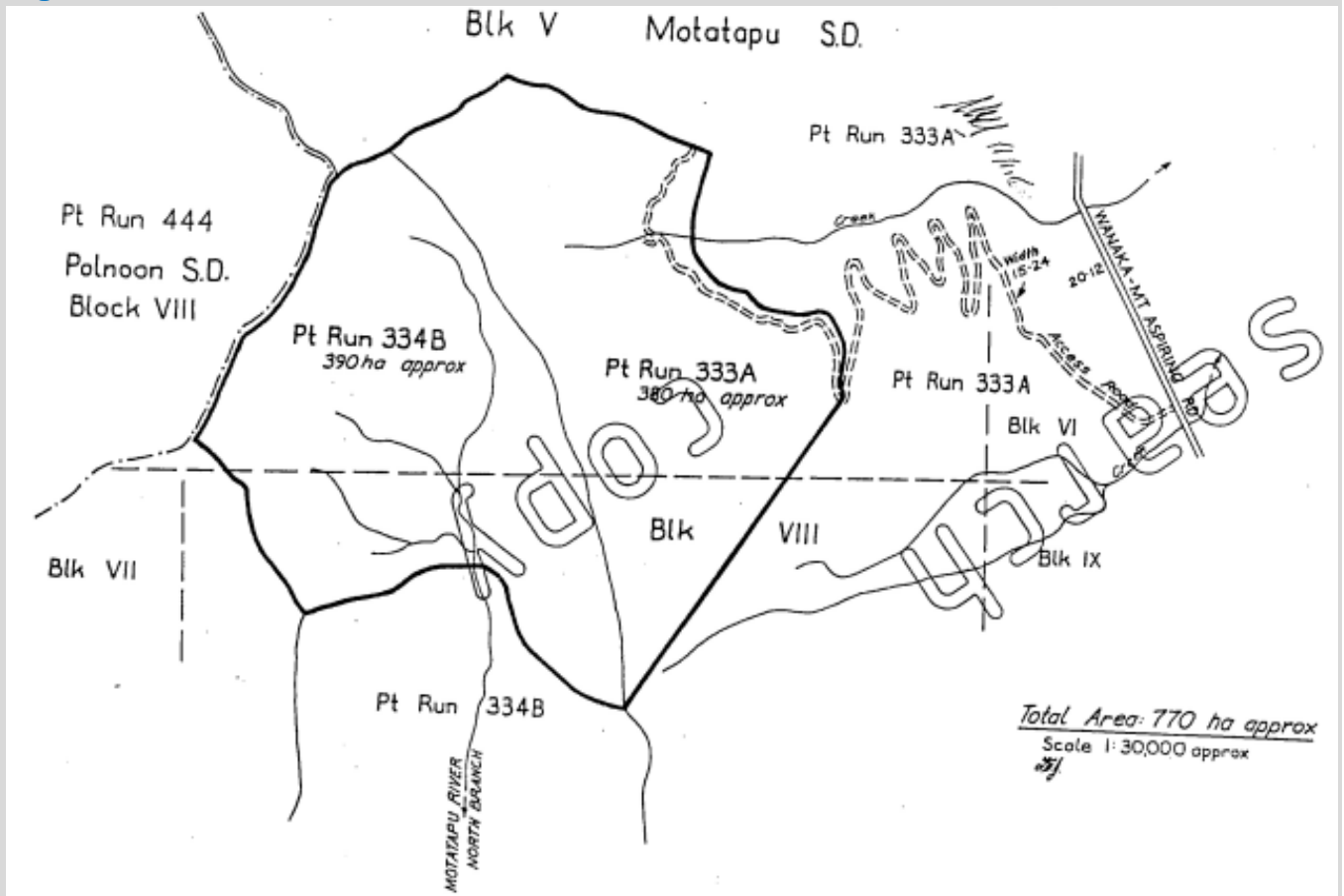
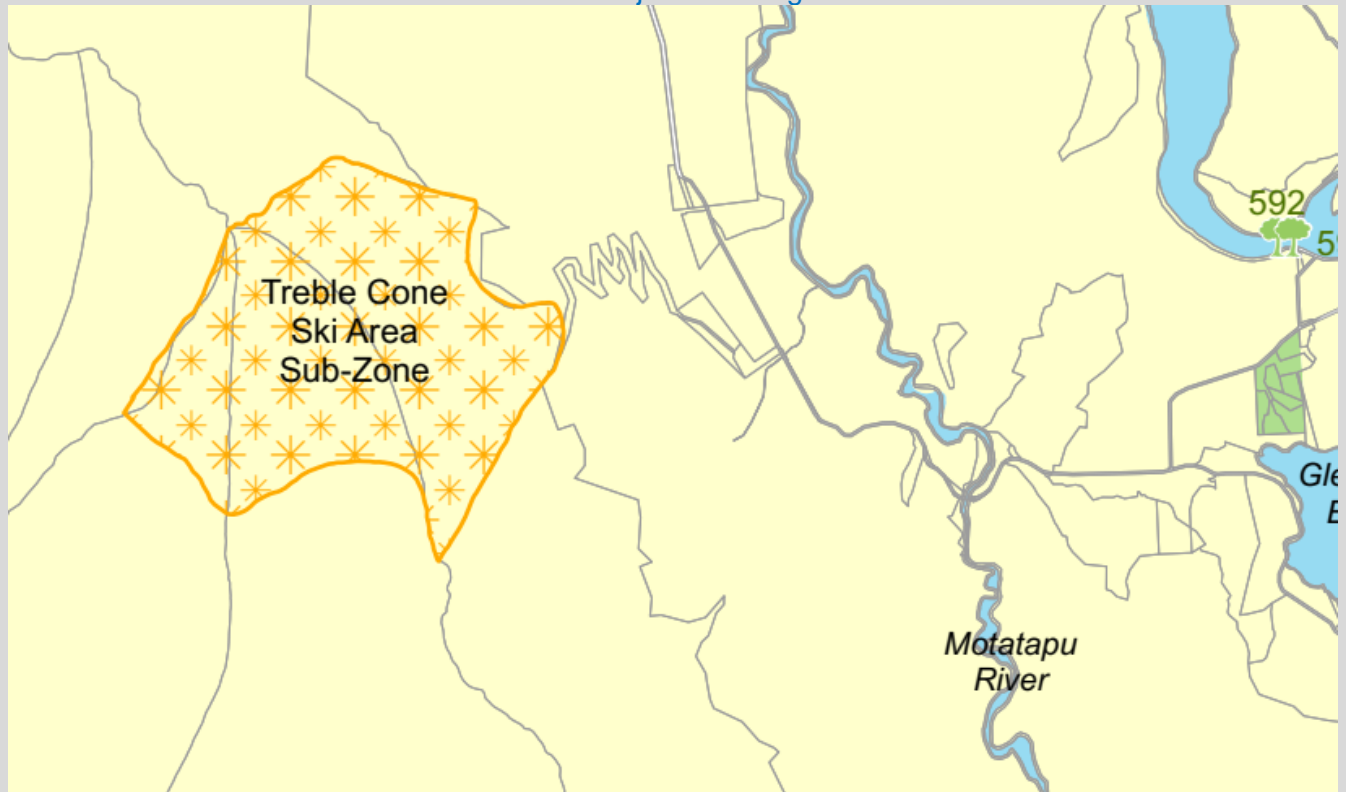
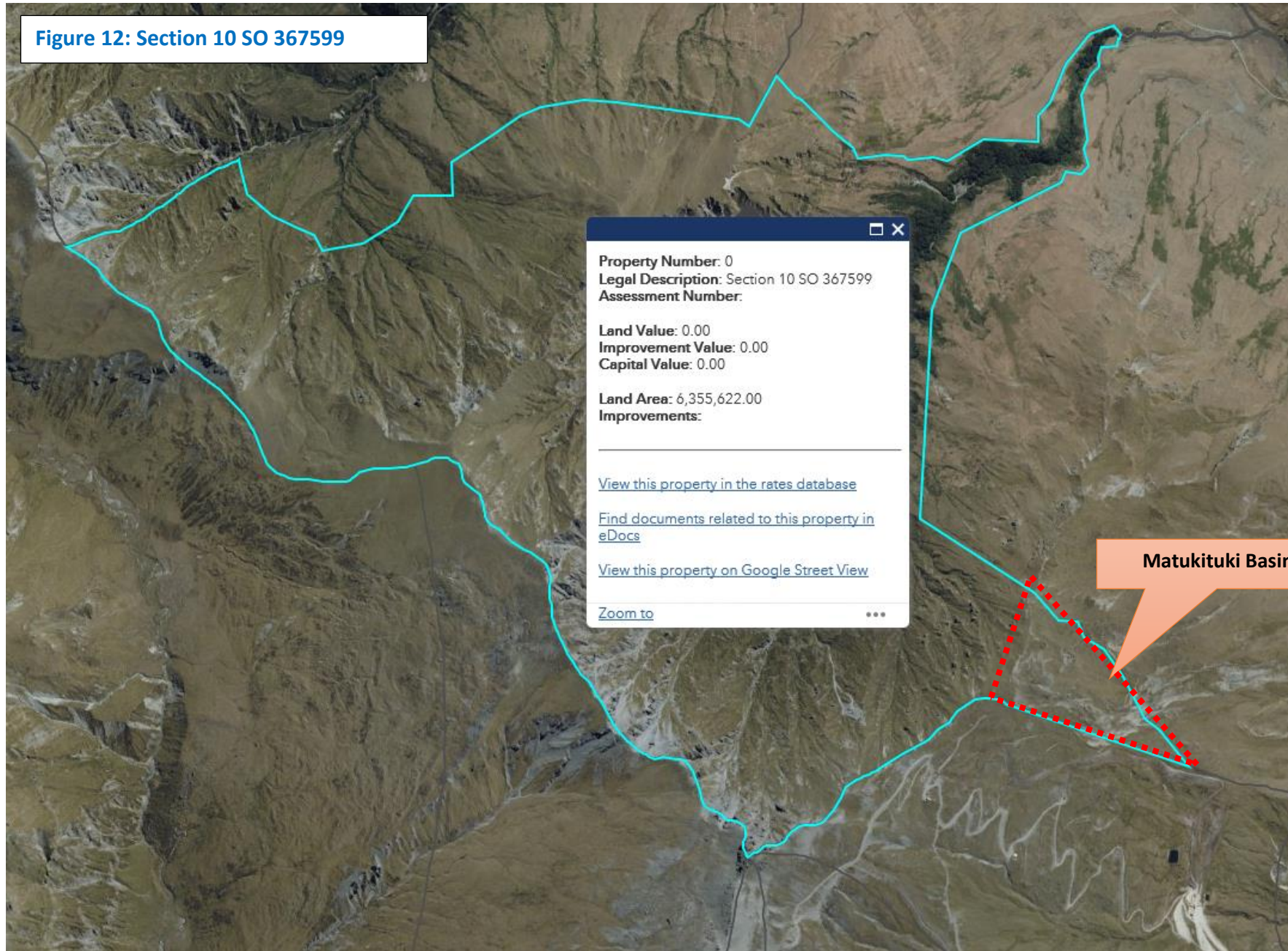


Figure 11: Current Treble Cone Ski Area Sub-Zone— however going through QLDC proposed District Plan review so Ski Area Sub-Zone is subject to change



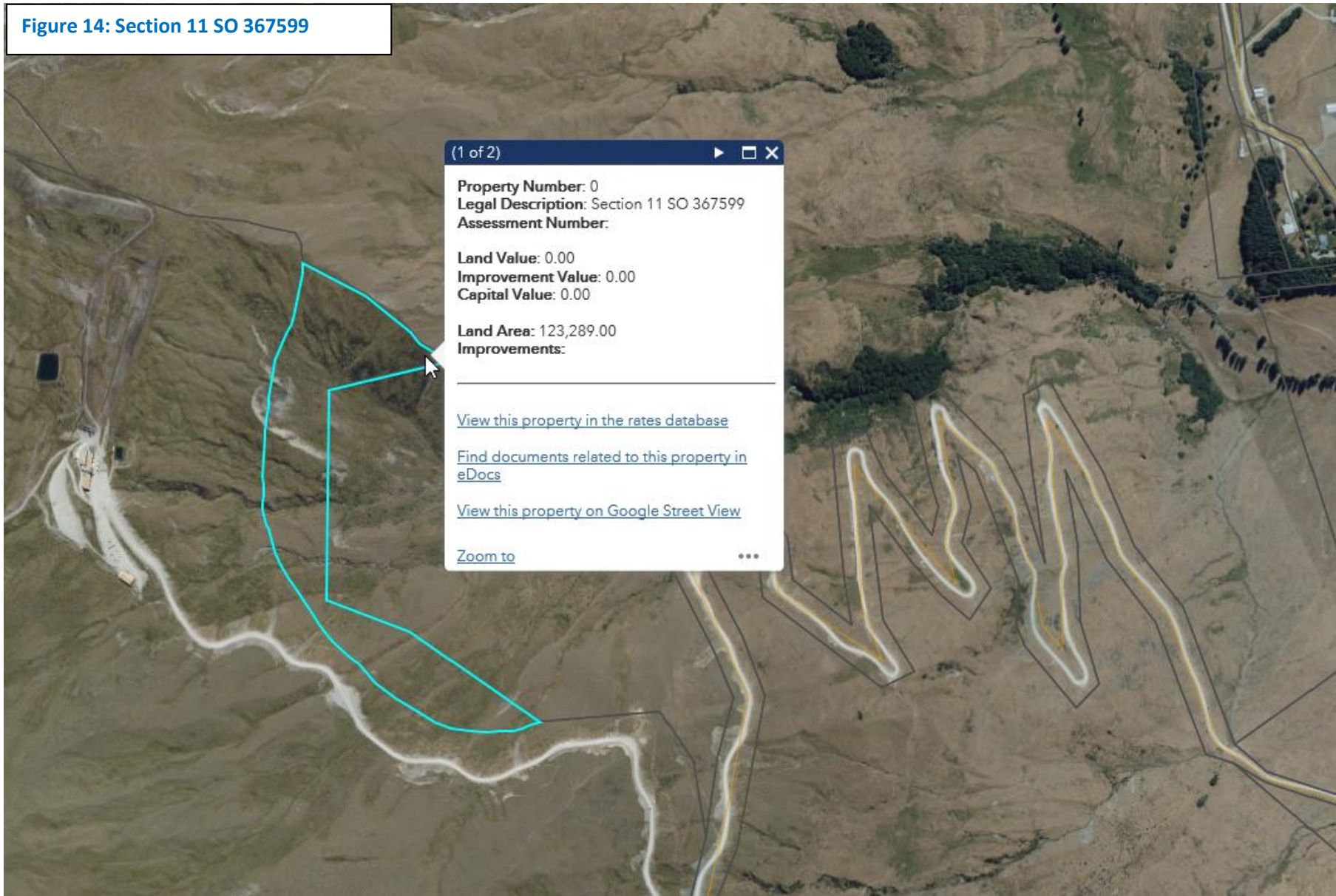
<https://www.qldc.govt.nz/your-council/district-plan/proposed-district-plan-maps>

Figure 12: Section 10 SO 367599



Matukituki Basin Area

Figure 14: Section 11 SO 367599



(1 of 2) ▶ □ ×

Property Number: 0
Legal Description: Section 11 SO 367599
Assessment Number:

Land Value: 0.00
Improvement Value: 0.00
Capital Value: 0.00

Land Area: 123,289.00
Improvements:

[View this property in the rates database](#)

[Find documents related to this property in eDocs](#)

[View this property on Google Street View](#)

[Zoom to](#) ...

Figure 15: Map of Treble Cone Ski Field Access Road

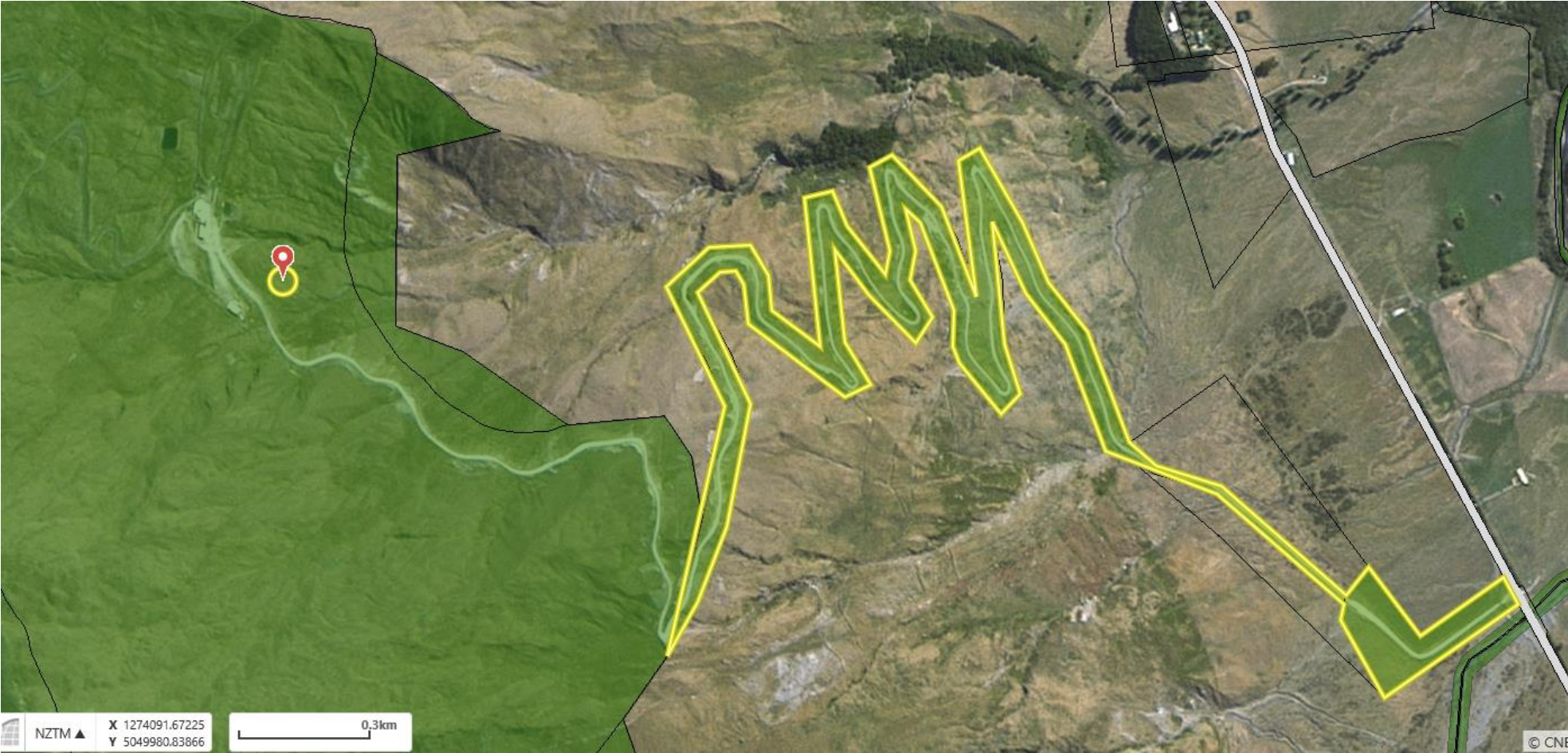
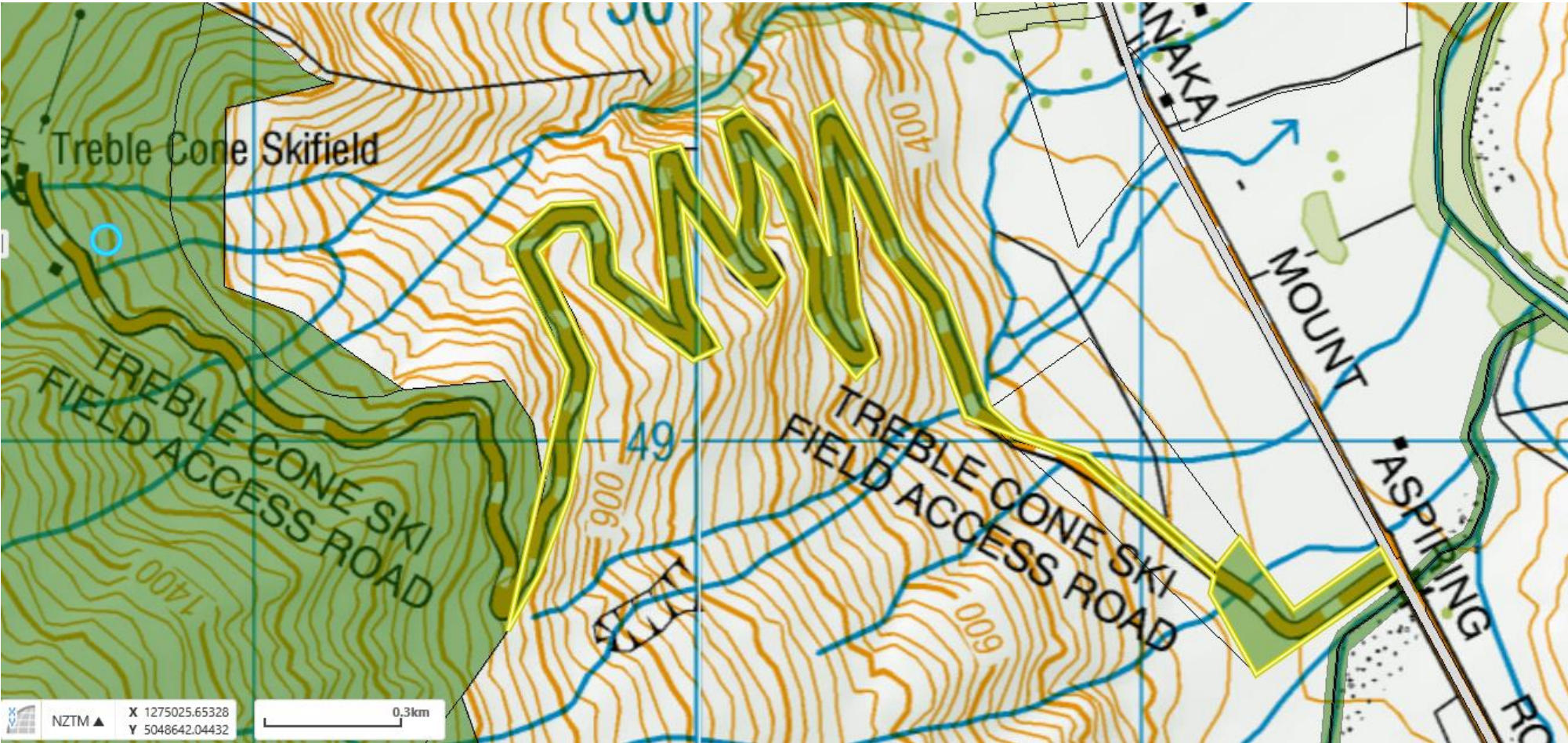


Figure 16: Map of Treble Cone Ski Field Access Road



<https://maps.doc.govt.nz/mapviewer/>

Figure 17: Overview of where Gravel Hopper is located on Treble Cone Ski Field Access Road



Figure 18: Location of Gravel Hopper incl access track



<http://qldc.maps.arcgis.com/apps/webappviewer/index.html?id=a421fcd415994785b1614390aa8d34e6>

Figure 19

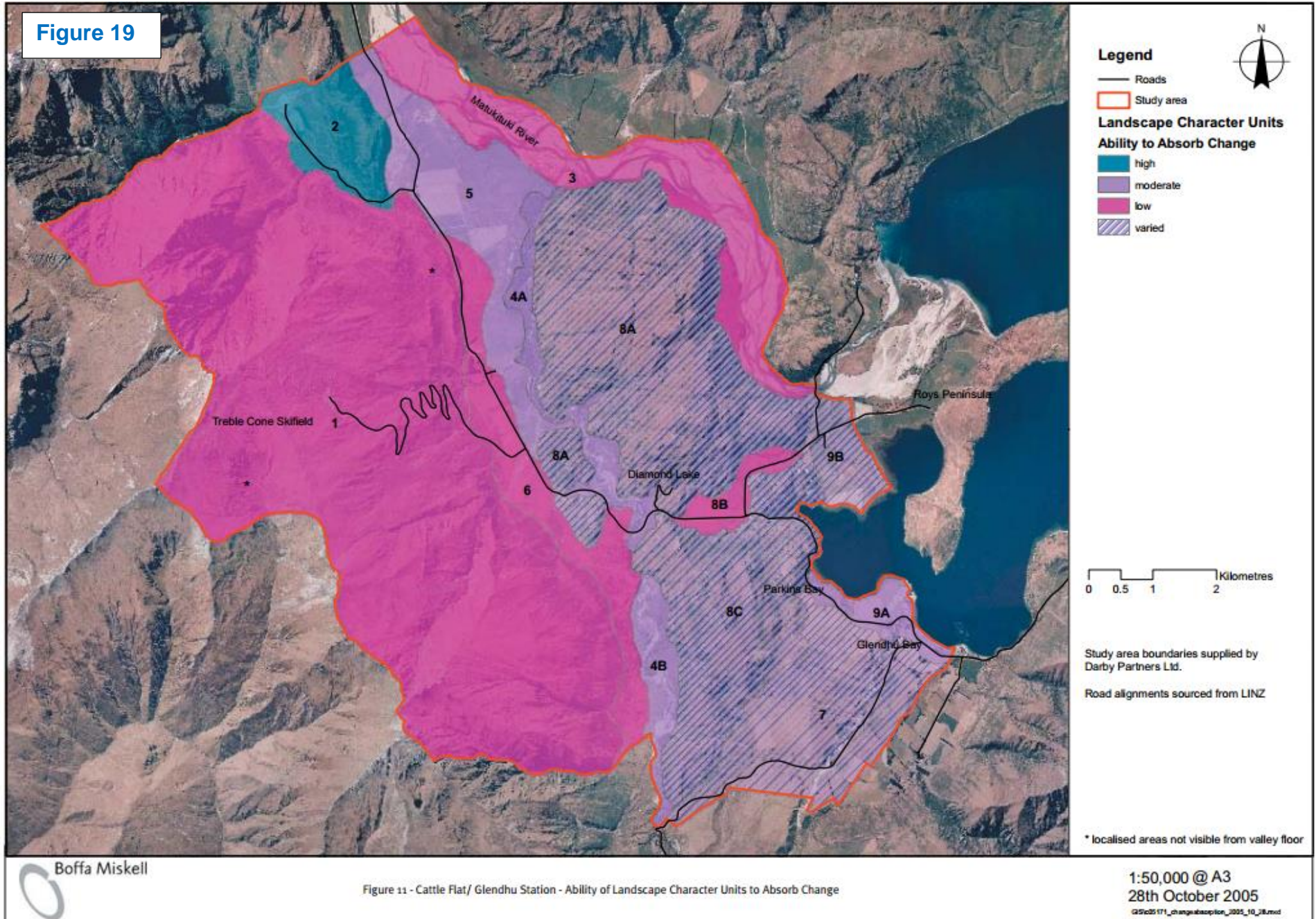
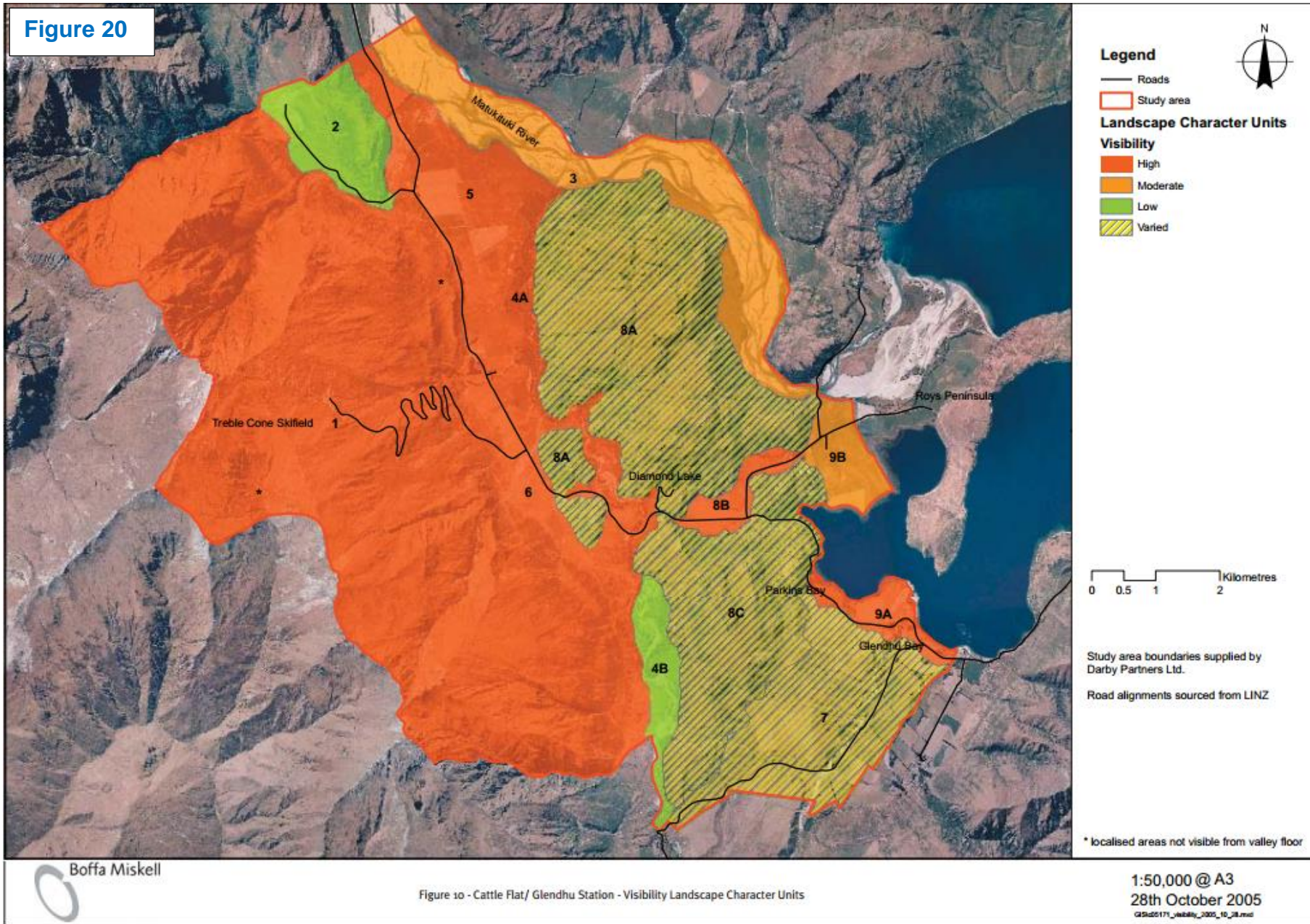


Figure 20



¹ <https://www.qldc.govt.nz/media/z3fc1esj/s0583-glendhubaytrustees-t12-fergusonc-supplementaryevidence.pdf>