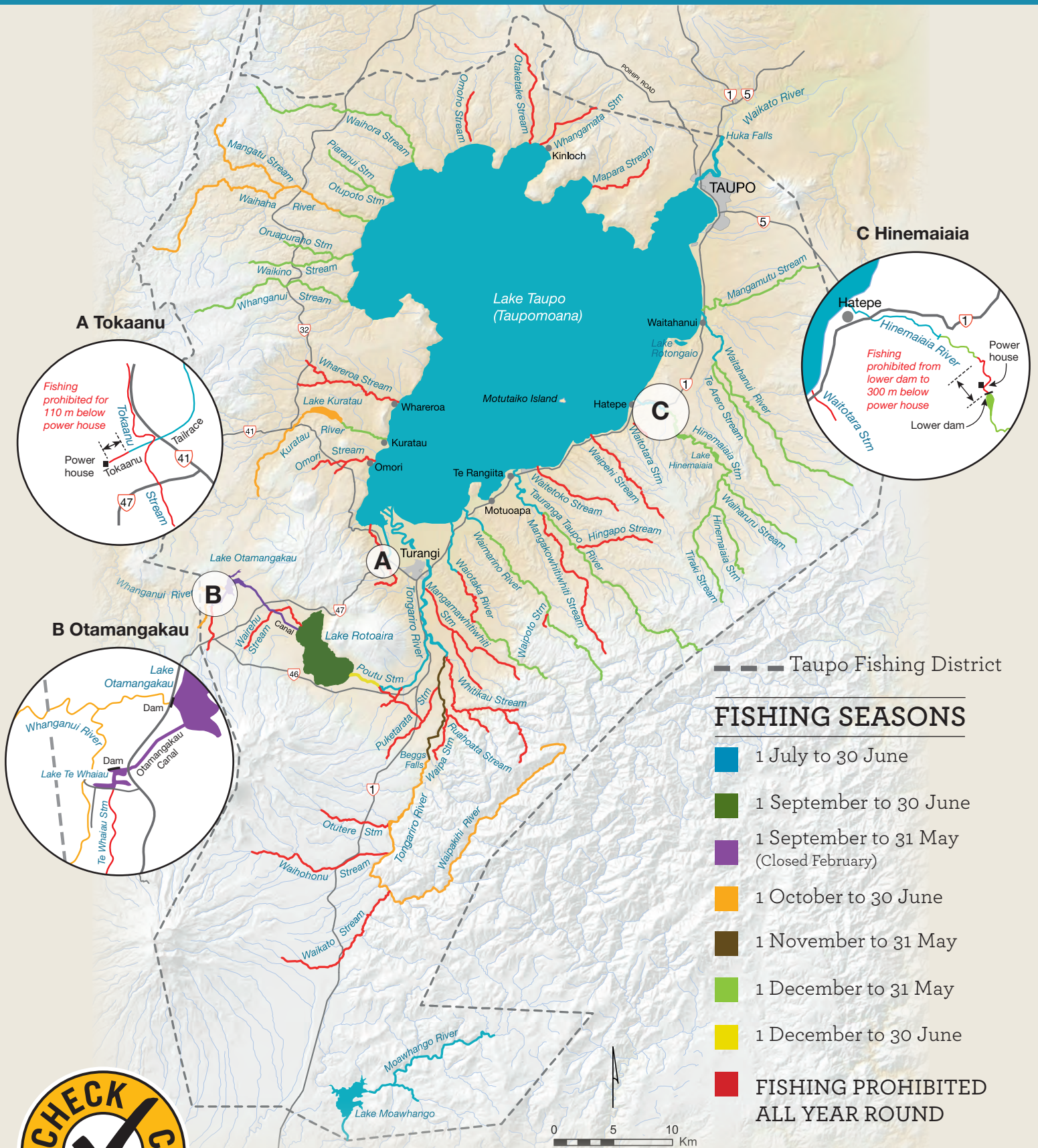


# TAUPO FISHING DISTRICT

A Taupō Fishing District Licence allows the primary licence holder access on foot over the designated lakeshore and riverbank rights of way. It does not permit access or fishing rights to Lake Rotoaira, or access over any other private land including Motutaiko Island.



BETWEEN WATERWAYS



[www.facebook.com/FishTaupo](https://www.facebook.com/FishTaupo)



Department of Conservation  
Te Papa Atawhai

# Summary of the Taupō Fishery regulations

## IMPORTANT INFORMATION

This summary of the Taupō District fishing regulations is provided as a **guide only**. For details, please refer to the full regulations. If you spot illegal fishing activity, contact the fishery duty officer - 027 290 7758

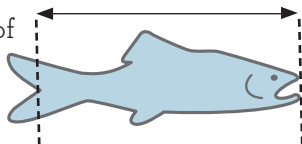
**1. Regulations** – A full copy of the Taupō Fishery Regulations 2004 and the Anglers Notice for Taupō District is available for viewing at all licence agents, and copies are available from the Department of Conservation Turangi Office, Private Bag 2, Turangi 3353, phone 07 384 7106 or the DOC website at [www.doc.govt.nz](http://www.doc.govt.nz).

**2. Lake Rotoaira** – This lake is managed by the Lake Rotoaira Trust, so the Taupō Fishery Regulations and Anglers Notice do not apply. Lake Rotoaira licences can be purchased through the Taupō fishery 'online licence store' or through selected outlets.

### 3. Size limits –

Note: size is measured from tip of the snout to the fork of the tail.

Minimum size is **35cm** except:



- Waipakihi River upstream of Rangipo Dam, Lake Moawhango and Lake Otamangakau: no minimum size
- Lake Kuratau and the river upstream of the lake: minimum size is 30cm

Maximum size of 55cm applies at Lake Otamangakau.

### 4. Daily bag limit

- On any day, you must stop fishing once you have kept the daily bag limit of trout.
- Lakes Kuratau and Moawhango and the Waipakihi River upstream of the Rangipo Dam: no daily bag limit.
- Lake Otamangakau fishery: 2 trout per day regardless of species
- All other waters in the Taupo Fishing District, 6 trout per day regardless of species.

**5. Fishing hours** – You may fish between 5.00 am and 12.00 midnight on any day.

**6. Fishing seasons** – there are a number of waters where fishing is prohibited at all times, and others where defined open seasons apply, as shown on the map of this summary.

### 7. Fishing methods

*In all cases:*

- You can only fish with one rod at any time, but you may have other assembled rods with you.
- You may use up to three flies or lures on your line.
- Only single-point hooks may be used, and a lure (including flies) may not have more than one hook attached.
- There is no weight restriction on flies and lures but the maximum allowable hook size is one that has a 14 mm gap between point and shank.
- The use of baits is not permitted and only artificial flies or lures may be used for trolling, jigging and spinning.

### Trolling and jigging

- On Lake Taupō, you must not troll or jig within 200 m of the landmark post or posts situated at the mouth or mouths of tributary rivers and streams (these landmark posts are marked with white, black and yellow rings) as these areas are restricted to fly-fishing only.
- You may put the rod in a rod holder, but only a licensed angler can fish with it.
- A person must not use any fish-attracting electronic devices.

### Fly fishing

- Most of the rivers in the Taupō Fishing District are restricted to fly fishing only. The exceptions are the Tongariro upstream of Waikato Falls and including the Waipakihi River, the Kuratau River upstream of the Kuratau hydro-electric dam, the Hinemaiaia River upstream of the HB dam, and the Waikato River from the lake outlet to Huka Falls.
- In fly-fishing-only waters you may attach weight such as a splitshot to the line to facilitate the sinking of the fly and a yarn indicator. You must use a fly rod, fly reel, fly line, leader and artificial fly, and you must not use a float or attach weight to facilitate casting.
- Artificial fly means any lure of feather, fur, wool or other material used in the making of artificial flies
- Fishing from a boat within fly-fishing-only waters is allowed at the mouths of the Tongariro and Tauranga-Taupō rivers, and the lower Tongariro River downstream of Downs Pool, but in all these cases the boat must be securely anchored. Boats include float tubes and canoes.

### Spin fishing

- Spin fishing is permitted in Lake Taupō outside of the fly-fishing-only areas (see Trolling and jigging above), in the Tokaanu Tailrace and in those exceptions to the river fly-fishing-only restriction listed under Fly fishing.
- Spin fishing is also permitted in lakes Te Whaiiau, Otamangakau, and Kuratau, the Otamangakau and Wairehu canals, and in the Hinemaiaia River upstream of the lower dam.

**8. Sale of trout** – It is illegal to sell or purchase trout.

**9. Indigenous fish** – The taking of koura and other fish indigenous to Lake Taupō is permitted only for members of the Ngāti Tūwharetoa tribe.

**10. Footwear** – The wearing of felt-soled boots is not permitted when fishing for trout.

Details of the Taupō District fishing regulations can be found online:



[www.doc.govt.nz/fishingregs](http://www.doc.govt.nz/fishingregs)

Published by Department of Conservation, Taupō Office, PO Box 528, Taupō 3351. June 2024