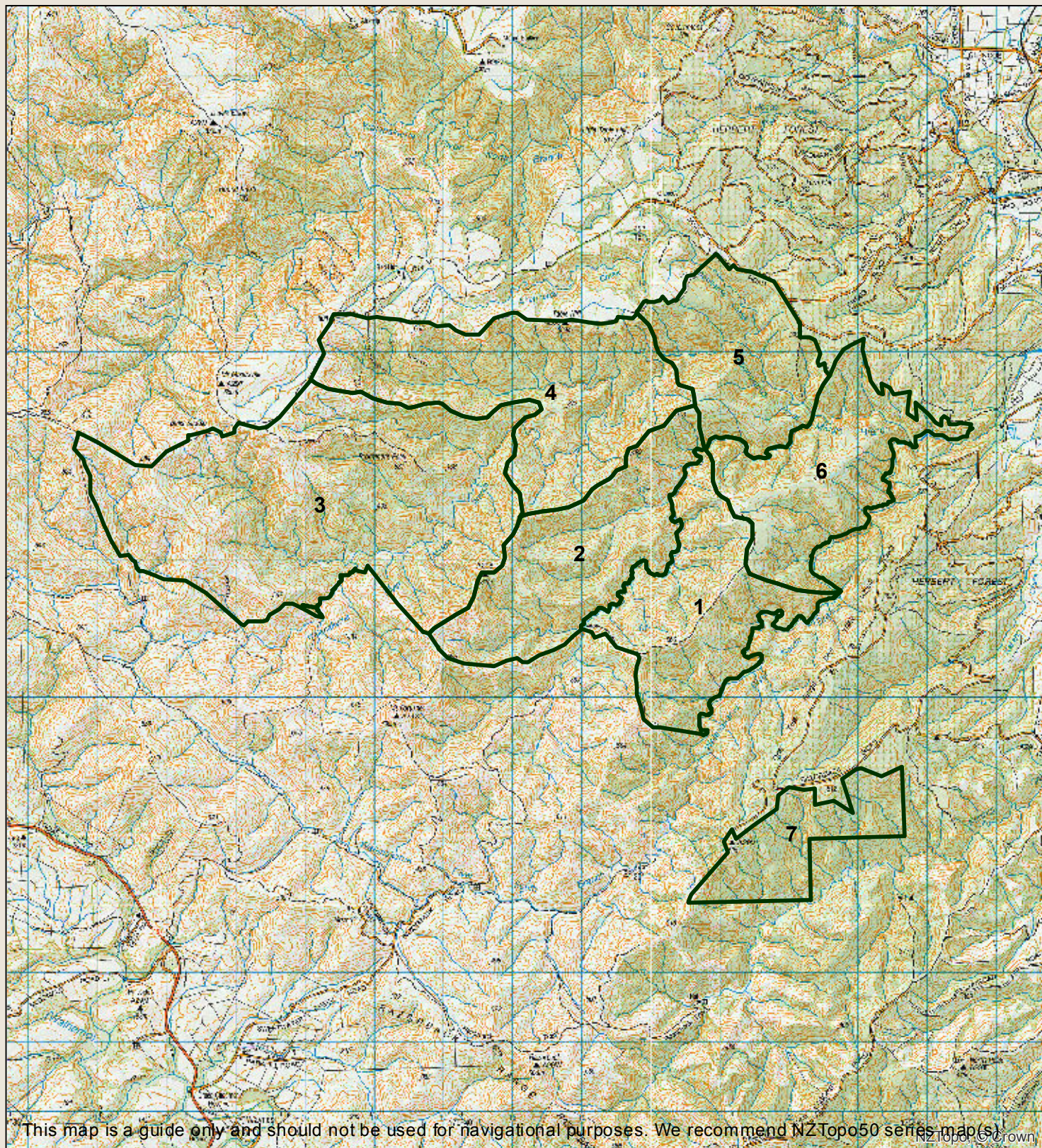


Waianakarua Roar Hunting Blocks



Department of
Conservation
Te Papa Atawhai



This map is a guide only.

We recommend the purchase of NZTopo 50. Available from any map selling agency.

Permission to cross private land must be obtained from the owner or occupier.

Spotlighting prohibited.

Where access to hunting areas is via forestry roads, they may be closed at times of high fire risk or logging operation. Please protect native birds and vegetation.

For any restricted hunting area, special permission to hunt must be obtained from the nearest DOC office or field centre.

Note that current permits are not valid for some hunting areas during the Roar Period (20th March to 20th April)