

Study site information

7: NZAC Ski Lodge

Notes for schools and educators



Ruapehu NZAC Ski Lodge and study site. Photo: NZ Alpine Club

Key information

Unmodified (by human activity) site in an alpine environment

This 20 x 20 m plot is an unmodified location within an alpine environment. The area is directly in front of a ski hut.

NOTE: This area is at high altitude and access is via difficult terrain. It must be completed ONLY by students with mountain tramping experience.

For an overview of study sites see [Section 4](#), page 7.

More information on the Round the Mountain Track

www.mtruapehu.com/winter/whakapapa

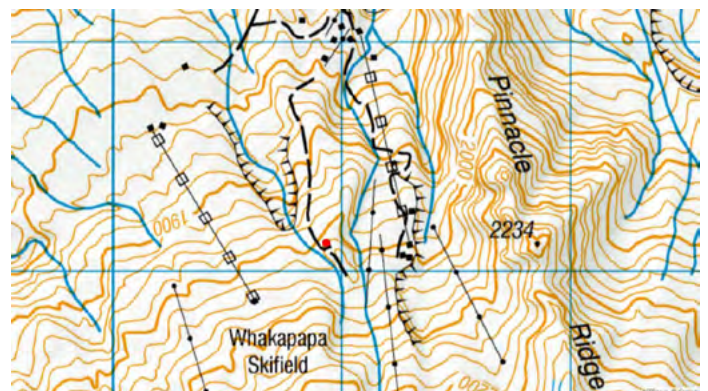
[Topographic map of New Zealand](#)

Getting to site

Take SH47 towards Whakapapa Village. Continue through the village and along Bruce Road towards Whakapapa ski field. Drive to the top of the road and park before the barriers into the ski field.

On foot, head through the barriers and follow the road through the ski village to the chairlift on right (Rangatira Express). Take this chairlift to the top. Follow signs for the NZAC Ruapehu Ski Hut.

The red dot on the map indicates the location of the study site.



Department of
Conservation
Te Papa Atawhai

New Zealand Government

Visitor facilities and parking

The car park is large enough for coaches and minibuses. There are toilets and a café in the Whakapapa ski field village.

Recommended activities

- ▶ For pre- and post-field-trip learning activities see [Section 2](#).
 - ▶ For information on NCEA assessment resources that could be linked to fieldwork at this site see [Section 3: Year 11–13 NCEA assessment resources](#).
 - ▶ For ideas on practical learning activities across Tongariro National Park, see [Section 4](#):
 - Observation activity – page 9
 - Ideas for using study sites – page 10
 - Geology activity ideas – page 11
 - Human impact activities – pages 12 and 13.
 - ▶ Using a measured transect or quadrat (1 x 1 m) you can investigate:
 - vegetation (eg tussock, vegetable sheep)
 - invertebrates (eg alpine grasshopper)
 - geology (eg rock types, erosion and origin).
 - ▶ 5-minute bird count (eg pipit/pīhoihoi) – see [Experiencing Birds in your green space](#), page 10.
 - ▶ Geology activity information in [Section 2](#), page 10. Geology activity sheets in [Section 7](#), pages 9–14.
-

Comparison sites

- For an overview of study sites see [Section 4](#), page 7.
- ▶ *Mead's Wall site* for comparison with a lower altitude environment on same side of mountain.
 - ▶ *Whakapapanui Walk site* for comparison with a non-alpine forested environment.
 - ▶ *Ohakune Mountain Road site* for comparison with an alpine environment on the opposite side of the mountain.
-

Health and safety

For general health and safety considerations see [Section 4](#), pages 8–9.

- ▶ High-altitude environment – be aware.
 - ▶ Difficult mountainous terrain – experienced students only.
 - ▶ Uneven rocky surface, off track. Be careful of trip hazards.
 - ▶ Weather – this site is exposed to the elements, and weather can change quickly. Make sure all students are prepared.
 - ▶ Volcanically active area – make sure your group is aware of emergency warning and evacuation procedures. See www.doc.govt.nz/volcanicrisk.
 - ▶ NZAC Ruapehu Hut is often in use, so respect hut users' privacy and don't go up to windows.
-

Education providers working here

Hillary Outdoors:
www.hillaryoutdoors.co.nz/portfolio/opc-tongariro-2

Other education experiences in the area

For further information on activities in this area, see:
[Whakapapa Village area information](#)
[Tongariro National Park information](#)
[Central North Island information](#)

