

# Study site information

## 1: Mangatepopo

Notes for schools and educators



Mangatepopo field site. Photo: Benjamin Moorhouse

### Key information

**Unmodified (by human activity) site in an alpine environment**

This 20 x 20 m plot is in an unmodified location next to a modified area with hut, toilets and campground. The site is in a low/medium-altitude alpine environment.

For an overview of study sites see Section 4, page 7.

**More information on the Mangatepopo Track:**

[Mangatepopo Hut](#)

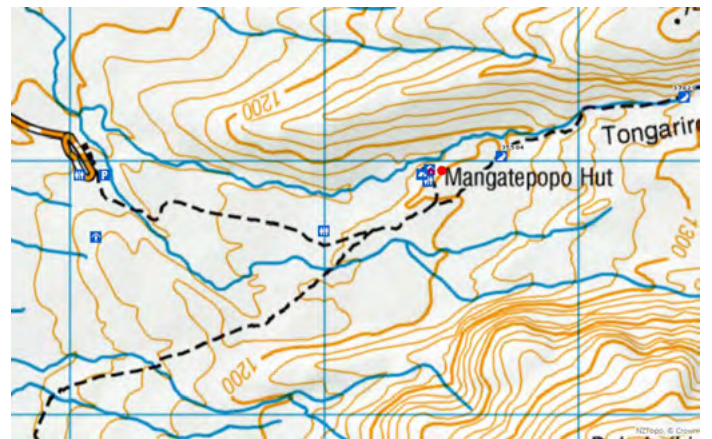
[Topographic map of New Zealand](#)

### Getting to site

Follow SH47 north past the Whakapapa village turn-off (SH48). Turn onto Mangatepopo Road after 5 km. Drive all the way to the large but busy car park at the end of the road (see parking notes).

The track to the study site is the start of the Tongariro Alpine Crossing. When facing the mountain, turn left, walk past a shelter and information board and onto the track. You will follow the track for about 20 min until you see a sign on the left indicating the path to Mangatepopo Hut. The study site is immediately in front of the hut on top of a small mound.

**The red dot on the map indicates the location of the study site.**



### Visitor facilities and parking

The car park gets very busy – the maximum parking time is 4 hours. Coupons for longer parking times are available for school groups at the Whakapapa Visitor Centre.

There are toilets at the car park, on the track and at the hut. Speak to the DOC ranger at the hut before using the facilities and study site.



Department of  
Conservation  
*Te Papa Atawhai*

New Zealand Government

## Recommended activities

- ▶ For learning activities before and after the field trip, see [Section 2](#).
- ▶ For information on NCEA assessment resources that could be linked to fieldwork at this site, see [Section 3: Year 11–13 NCEA assessment resources](#).
- ▶ For ideas on practical learning activities across Tongariro National Park see [Section 4](#).
  - Observation activity – page 9
  - Ideas for using study transects – page 10
  - Geology activity ideas – page 11
  - Human impact activities – pages 12 and 13
- ▶ Using a measured transect or quadrat (1 x 1 m), you can investigate:
  - vegetation (eg tussock, vegetable sheep)
  - invertebrates (eg alpine grasshopper)
  - geology (eg rock types, erosion and origin).
- ▶ 5-minute bird count (eg pipit/pīhoihoi) – see [Experiencing Birds in your green space, page 10](#).
- ▶ Side trip to nearby volcanic cliffs for geology discussion.
  - Geology activity information in [Section 2](#), page 10 and [Section 4](#), page 11
  - Geology activity sheets in [Section 7](#), pages 9–14

## Comparison sites

For an overview of study sites, see [Section 4](#), page 7.

- ▶ *Manawatu Ski Lodge site* for comparison with a higher altitude environment.
- ▶ *Whakapapanui Walk* for comparison with a non-alpine forested environment.
- ▶ *SH1 to Tukino Ski field site* for comparison with a similar altitude on the southern side of the mountain.

## Health and safety

For general health and safety considerations see [Section 4](#), pages 8–9.

- ▶ Uneven surface, off track. Be careful of trip hazards.
- ▶ Weather – this site is exposed to the elements, and weather can change quickly. Make sure students are prepared.
- ▶ Volcanically active area – make sure your group knows the emergency warning and evacuation procedures. See [www.doc.govt.nz/volcanicrisk](http://www.doc.govt.nz/volcanicrisk)

## Education providers working here

Hillary Outdoors:

[www.hillaryoutdoors.co.nz/portfolio/opc-tongariro-2/](http://www.hillaryoutdoors.co.nz/portfolio/opc-tongariro-2/)

## Other education experiences in the area

For further information on activities in this area, see:

[Whakapapa Village Area information](#)

[Tongariro National Park information](#)

[Central North Island information](#)

