



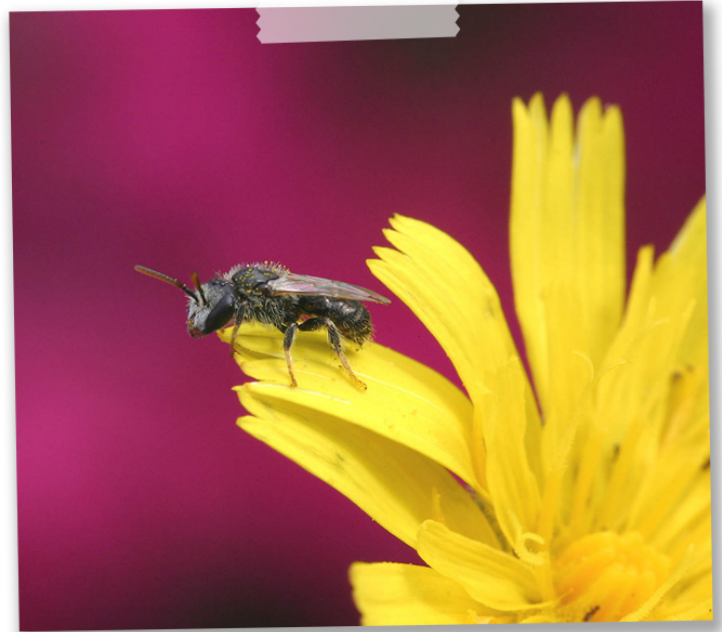
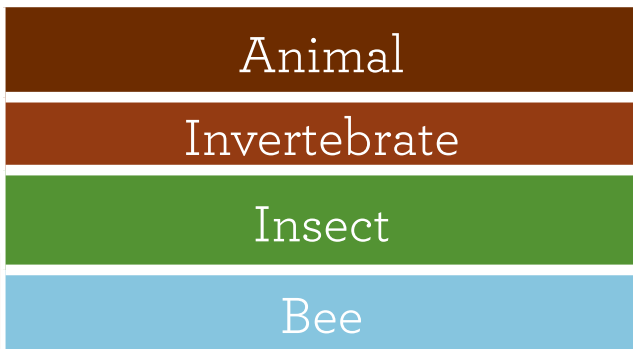
Native New Zealand bees

NZ bee facts

- Native bees are smaller than introduced bees and do not have a sting
- There are 28 types of native bee in New Zealand
- Bees are important pollinators of native plants (they move pollen and help plants make new plants)

Bee classification

- Bees are **insects**. They are in this group because they have: 6 legs, 2 antennae, and a 3-part body.



Habitat

- Native bees live in a variety of habitats
- They nest alone in small holes in the ground or in trees- not in hives

Diet

- Bees eat pollen and nectar from flowers.

