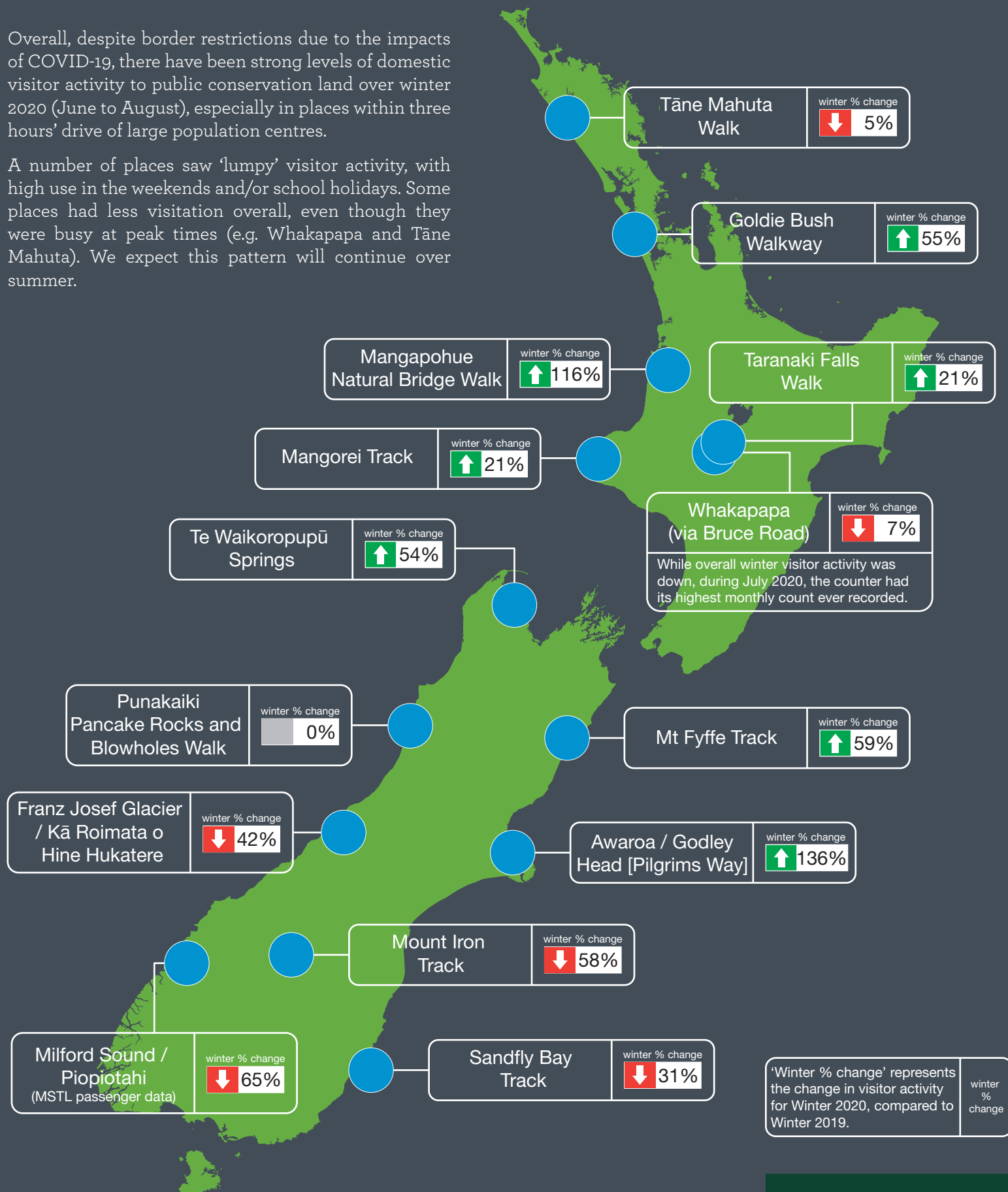


# Winter 2020 visitor activity

Comparing visitor activity in Winter 2020 (1 June 2020 to 31 August 2020) to Winter 2019 (1 June 2019 to 31 August 2019) at selected sites on public conservation land.

Overall, despite border restrictions due to the impacts of COVID-19, there have been strong levels of domestic visitor activity to public conservation land over winter 2020 (June to August), especially in places within three hours' drive of large population centres.

A number of places saw 'lumpy' visitor activity, with high use in the weekends and/or school holidays. Some places had less visitation overall, even though they were busy at peak times (e.g. Whakapapa and Tāne Mahuta). We expect this pattern will continue over summer.



About the data: The majority of this information is generated from DOC's activity counter system. Visitor activity at places fluctuates depending on multiple factors including the significant decrease in international visitors as a result of COVID-19 restrictions and weather impacts. Weather is a significant driver in visitation to public conservation lands and winter 2020 was New Zealand's warmest winter on record. Winter 2020 includes a period where New Zealand moved from Alert Level 2 to Alert Level 1 (8 June), Auckland moved to Alert Level 3 (12 August), New Zealand moved to Alert Level 2 (12 August) and Auckland moved to Alert Level 2.5 (30 August).