

Consultation and notification summary Hollyford operation 2018-19

This document provides a summary of the consultation and notification process undertaken by the Department of Conservation (“DOC”) and its contractor, EcoFX Ltd (“EcoFX”), in respect of the planned pest control operation in Hollyford. This operation is still in the planning stages and therefore, this document only captures the consultations and notifications that will have taken place as at 13 September 2019.

Consultation on possible pest control methods and effects

DOC and EcoFX consulted with the following groups of stakeholders regarding the proposed method of pest control and/or the effects of the operation:

- Iwi
- Landowners /occupiers
- Hunting and fishing groups
- Concessionaires
- Aviation companies
- Local government and statutory bodies
- Police
- Recreation groups
- Sponsors and partners
- Road management groups

The following table shows the number of each type of stakeholder consulted:

Type of stakeholder	Number consulted	Consultant	Reason for consultation	Method of consultation
Iwi	5	DOC	Consultation on the effects of the operation on Rūnanga relative to cultural values	In-person visits, phone conversations and email correspondence
Landowners / occupiers	36	DOC & EcoFX	To seek consent to carry out the operation on land owned and/or occupied by each respective landowner/occupier	In-person visits
Hunting and fishing groups	17	DOC & EcoFX	Consultation on effects of the operation and support from hunting and fishing groups	In-person visits, phone conversations and email correspondence
Concessionaires	20	DOC & EcoFX	Consultation on effects of the operation and support from concessionaires	In-person visits, phone conversations and email correspondence

Aviation companies	20	DOC & EcoFX	Consultation on effects of the operation	In-person visits, phone conversations and email correspondence
Local government and statutory bodies	4	DOC	Assessment of environmental effects, potential impacts of the operation and conditions of DHB consent	In-person visits, phone conversations and email correspondence
Police	2	DOC	Presentation on <i>Tiakina Nga Manu</i> programme and briefing of the operation	In-person visits and email correspondence
Recreation groups	4	DOC	Potential impact on recreational activities and support from recreation groups	Phone conversations, email correspondence and letters
Sponsors and partners	7	DOC	Consultation on effects of the operation and support from sponsors and partners	In-person visits
Road management groups	1	DOC	Consultation on effects of the operation and support from road management group	Phone conversation and email correspondence

Consultation outcomes

Iwi

Three of the iwi groups that were consulted were very supportive of the operation and another group noted that they did not have any concerns regarding the operation.

The fifth group, however, advised that its Rūnanga was opposed to the use of 1080 and the proposed operation. After careful consideration of that feedback, DOC made the decision to proceed with the Hollyford operation on the basis that,

- 1) trapping is proven to be ineffective protect wildlife from declines and localised extinctions through a mass seeding year;
- 2) multiple long-term datasets clearly show the benefit of 1080 to birdlife;
- 3) by-kill during these 1080 operations is uncommon, and when recorded, it is easily offset by the alarmingly high losses to wildlife from predators that will otherwise thrive without pest control;
- 4) data from a trial of auto-resetting traps and the bait station treatment area in the lower Hollyford / Whakatipu Ka Tuka is showing that these methods are not effective at controlling rats sufficiently in a mast year;

- 5) initial results of a DOC-supported research in the Hollyford/ Whakatipu Ka Tuka operational area study show the highest density of rats yet recorded anywhere in a New Zealand forest and the Tiakina Nga Manu operation is critical to this research;
- 6) recent rat tracking tunnel data shows rats tracking at an alarming >50% average with some sites in the Arthur Valley tracking at 100, and if these operations were to not go ahead the significant gains that have been made with the likes of the Whio programme in the Arthur and Cleddau Valleys could be wiped out through predation by rats and stoats;
- 7) DOC has a high level of confidence in the ability of its staff and contractors to deliver this operation within the high quality standards required; and
- 8) DOC provides transparent weekly updates on the progress of the operation to that iwi group.

The decision to proceed with the operation was made on the condition that DOC would send regular updates to that iwi group to ensure that they are informed of the progress of the operation.

Landowners

As at 10 September 2019, 11 landowners/occupiers have provided consent for DOC and EcoFX to carry out pest control operations on or near their properties. Seven landowners and occupiers have confirmed that they do not wish to have pest control operations carried out on their land and therefore, have not provided consent.

7 other landowners have informed EcoFX that they have no concerns regarding the operation.

One landowner raised concerns regarding the risk of 1080 bait pellets landing on their roof and spouting. EcoFX advised the landowner that they will check the roof following the application of bait to ensure that any bait that might have landed on the roof or spouting is removed.

One landowner noted that the rodent and possum populations in the area were very low, and queried whether pest control was necessary within the proposed treatment block. EcoFX provided this landowner with pest monitoring data which suggested that pest numbers within the proposed treatment area were higher than what the landowner thought them to be. The landowner then acknowledged that they had relied on possum numbers within a much smaller area, and confirmed they were happy for the operation to proceed.

Hunting and fishing groups

None of the consulted parties raised any concerns regarding the proposed operation. One of the groups raised concerns regarding the potential impact on high profile fishing sites in Waikaia, Eyre Mountains, Kepler and Clinton. DOC explained that none of those sites were near the proposed treatment area for the Hollyford operation, and therefore those sites were not likely to be affected by this operation.

Concessionaires

Two of the concessionaires that were consulted expressed their support for the operation, and none raised any concerns. One individual did, however, note that they did not personally **support the operation but understood DOC's position.**

Local government and statutory bodies

Three of the four groups that were consulted expressed their support for the operation and none raised any concerns.

Recreational groups

None of the parties that were consulted raised any concerns and one party noted that they were strongly in support of the operation.

Aviation companies

None of the parties that were consulted raised any concerns regarding the operation.

Sponsors and partners

None of the sponsors and partners that were consulted raised any concerns regarding operation. One partner noted that they would like to see the operation completed before October 2019.

Notification

Various parties were notified of the operation and provided with progress updates. Copies of the documents that were provided as a part of that notification process are listed below (and attached as appendices to this summary):

1. Notification email regarding operations in Fiordland (attached as Appendix 1);
2. **Tiakina Ngā Manu** – Fiordland National Park factsheet (attached as Appendix 2);
3. **Tiakina Ngā Manu** – Hollyford factsheet (attached as Appendix 3);
4. **Tiakina Ngā Manu** – Predator Response factsheet (attached as Appendix 4);
5. Notification letter to iwi (attached as Appendix 5);
6. Notification letter to landowners (attached as Appendix 6);
7. Notification letter to concessionaires (attached as Appendix 7);
8. Notification letter to service providers (attached as Appendix 8);
9. Notification letter to sponsors, partners and stakeholders (attached as Appendix 9);
10. Public notice published in local newspapers (attached as Appendix 10); and
11. **Tiakina Ngā Manu** – update on progress of operation (attached as Appendix 11).

The following table identifies the various groups that received notifications prior to the commencement of the operation:

Type of stakeholder	Number notified	Notifier	Reason for notification
Iwi	5	DOC & EcoFX	Update on progress of operation
Landowners / occupiers	42	DOC & EcoFX	Potential impact
Hunting and fishing groups, WARO concessionaires and possum recovery groups	35	DOC & EcoFX	Potential impact

Concessionaires	28	DOC & EcoFX	Potential impact
DOC Visitor Centres	2	EcoFX	Potential impact
Local government and statutory bodies	4	DOC & EcoFX	Potential impact
Police	3	EcoFX	Potential security or protest issues
Schools	2	EcoFX	Potential impact
Healthcare providers	6	EcoFX	Information to respond to possible poisoning
Animal care providers	3	EcoFX	Information to respond to possible poisoning
Recreational groups	5	DOC & EcoFX	Potential impact
Aviation companies	22	DOC & EcoFX	Potential impact
Sponsors / partners	8	DOC & EcoFX	Providing information regarding operation
Road management groups	1	EcoFX	Potential impact

Released under the Official Information Act

Appendix 1: notification email from DOC

Kia ora [name]

I am writing to inform you of the Department of Conservation's planned Tiakina Ngā Manu - Battle for our Birds response to the predicted predator irruption this year, which is a major threat to native species. Beech seed predictions have confirmed a major mast event throughout Fiordland, and over much of the South Island beech forests for the current year. Without targeted pest control, this mast would result in plague proportions of rodents and stoats.

As a result, we are planning for six aerial 1080 operations across Fiordland in Spring of 2019, including the Arthur-Cleddau, Eglinton-Clinton and Hollyford (encompassing the Lower and Upper Hollyford). However, the operations will only go ahead if rodent tracking and seedfall results from these sites meet threshold levels (as determined by Autumn monitoring data to be collected in April-May). Once we have a clearer picture of the results, we will confirm whether the operation is to go ahead or not. You will be kept informed throughout the various stages of the process.

Attached is some useful information outlining the planned 2019 operations. The information herein is a broad overview of all of the Fiordland sites, as well as some specific information in relation to Northern Fiordland areas. If you would like any information on other areas not included herein, I am happy to send these through separately.

The Operations will follow a similar process to that of the 2016 Operations, in that contractors will be delivering the work on behalf of the Department. The Department will be having initial conversations with key stakeholders about the operation, as is the purpose of this communication. The contractors, CWAC and EcoFX, will be conducting the bulk of the remaining consultation and all notifications throughout various phases of each operation.

We are confident that the operation will enhance the work DOC and its partners are already doing in protecting native flora and fauna in Fiordland. We trust that this operation will receive your support.

If you have any immediate concerns or questions, please feel free to give me a call or send me an email.

See you soon,

s 9(2)(a),
9(2)(g)(ii)

DOC Site-lead, Hollyford Aerial Operation

Conservation for prosperity Tiakina te taiao, kia puawai

www.doc.govt.nz



Protect our species in Fiordland National Park



Pest control to protect native species from widespread predator plagues

A heavy seeding (mast) will occur in many forests this year. This natural event, that should benefit native species, will be hijacked by introduced predators as rodent and stoat numbers will skyrocket. Seedfall and rodent levels will be monitored at sites where rare and endangered native species are under greatest threat. When rodent numbers meet critical levels, that will trigger predator control. Without predator control some species such as yellowhead/mohua, kākā, orange-fronted parakeet/kākāriki karaka, rock wren/pīwauwau and bats/pekapeka will suffer heavy losses.

Predicting increased rodent populations – 2014 and 2016

A widespread heavy seedfall in South Island beech forests in early 2014 and again in 2016 led to escalating rat and mice numbers. Two events of such magnitude in quick succession was thought to be unusual. DOC, with the help of NIWA, is getting better at predicting these mast events.

Pest control works

DOC carried out aerial 1080 pest control in the winters following the prolific forest flowering over more than 600,000 hectares each season. Monitoring showed an average rat kill of about 95%, which reduced rodents to undetectable levels at most sites and stoat plagues were avoided.

Outcomes

Intensive species monitoring showed the nesting success of rock wren, mohua, robin and rifleman was significantly higher within pest control areas than outside. Go to doc.govt.nz/our-work/battle-for-our-birds.

2019 – the battle continues

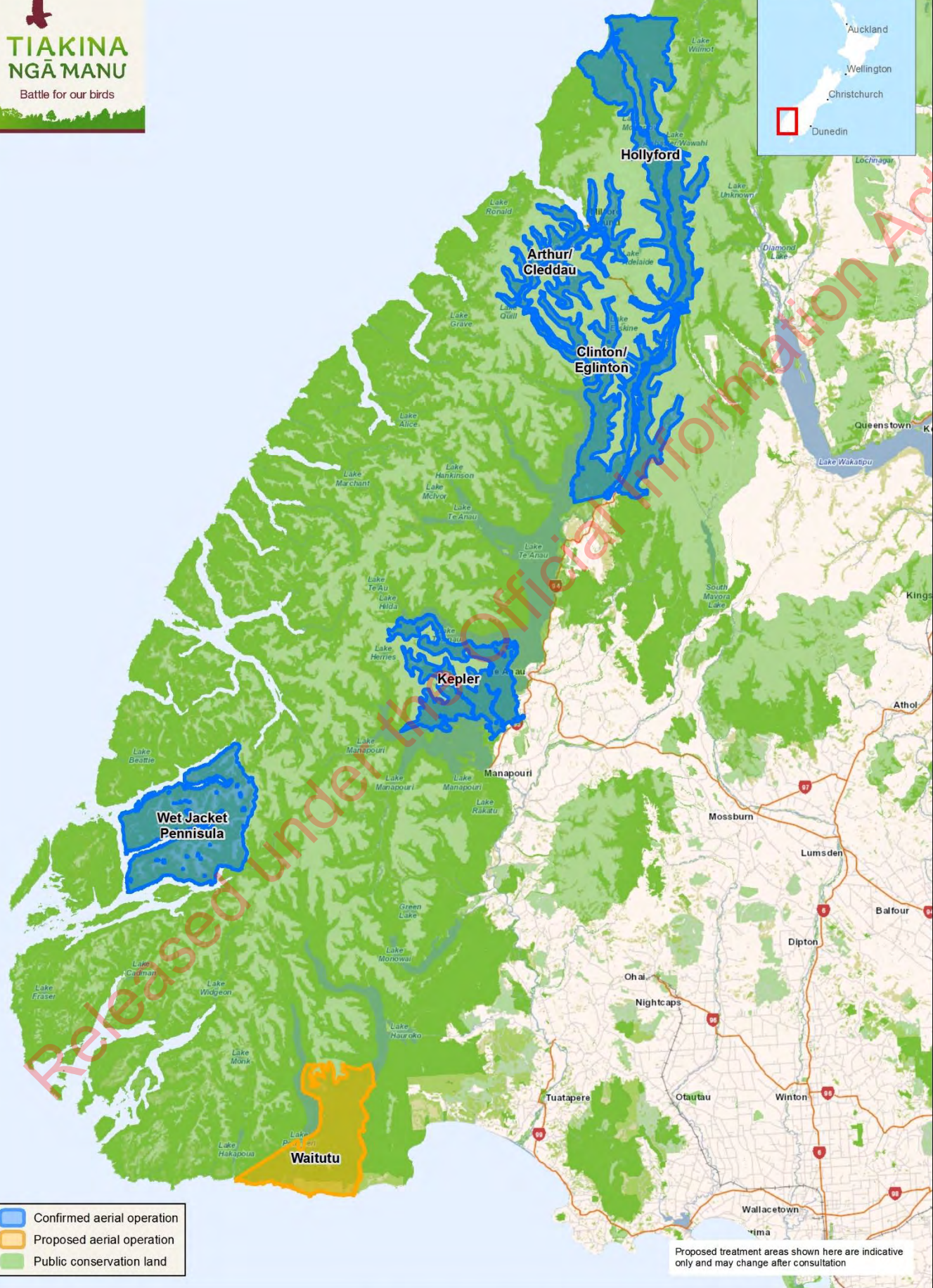
Extensive seeding is occurring again in 2019 but on an even larger scale. This is likely to be the biggest mast in decades. We will have a major pest problem on our hands.



Mohua/yellowhead. Photo: Sabine Barnert



Short-tailed bat/pekapeka. Photo: Colin O'Donnell DOC



- Confirmed aerial operation
- Proposed aerial operation
- Public conservation land

Proposed treatment areas shown here are indicative only and may change after consultation

1:50,000
NZGD 2000 New Zealand Transverse Mercator
Not for navigation
Crown Copyright Reserved
Base map: LINZ Topo50/250
DOC Geospatial Services
26/03/2019
File: Fiordland_FaithfulMap_Update.mxd
Q:\GIS_Analyst\Projects\Task\BFO\BFI\hollyford

Fiordland National Park
Aerial Predator Control 2019/20
Treatment areas



Fiordland National Park: sites and values

Where heavy seedfall occurs, we can expect predator numbers to soar. To be ready to protect native species at risk, DOC is planning predator control at the following sites:

Arthur/Cleddau/Sinbad

- 17,924 ha in the Arthur, Sinbad and Cleddau valleys to protect whio (blue duck) and pateke (brown teal)
- Part of northern Fiordland whio security site, one of only two sites for re-introduction of pateke in the South Island.
- Proposed timing: From Aug 1st 2019

Eglinton/Clinton

- Protection of mohua, southern tokoeka/kiwi, whio/blue duck as well as short-tailed and long-tailed bats
- 35,625 ha comprising the Eglinton and Clinton valleys along with the adjoining lake side forest
- Proposed timing: From Aug 1st 2019

Hollyford

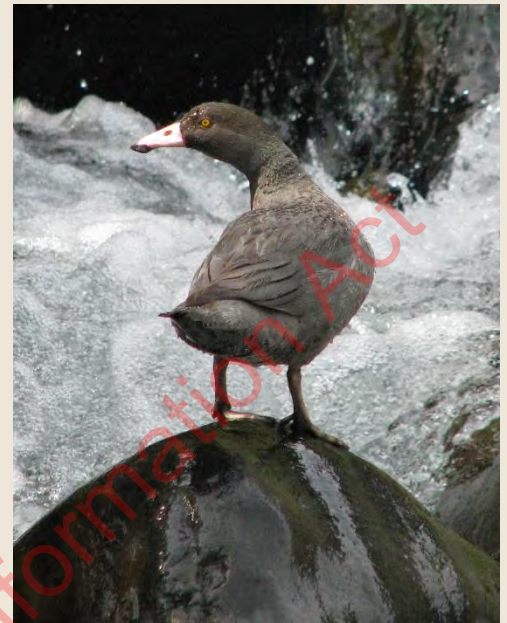
- Protection of many forest species including kaka, falcon, yellow crowned parakeets, mohua (yellowhead) and kea, as well as fernbirds and whio (blue duck) and
- 40,585 ha covering the upper and lower valley, from Martins Bay up to the Milford Highway
- Proposed timing: From Aug 1st 2019

Kepler

- Protection of pekapeka (long-tailed bats) and whio (blue duck) alongside other native forest flora & fauna
- 24,168 ha plus a 200m buffer strip of bait stations along the Kepler track/edge of Lake Te Anau
- Proposed timing: From Aug 1st 2019

Wet Jacket

- Planned aerial 1080 operation aims to reverse the decline in the Fiordland tokoeka (kiwi) population by protecting vulnerable kiwi chicks from predation
- The planned operation should also benefit kākā, kea, rock wren/pīwauwau and native vegetation vulnerable to possum browse such as rata and mistletoes
- 39,707 ha to be treated between May 2019 – April 2020



Whio. Photo: Herb Christophers



Fiordland tokoeka Photo: James Reardon

A range of pest control methods will be used including traps and toxins

Aerial application of 1080 baits is the most cost-effective predator control method over large areas. It is the only viable method in remote or rugged terrain. In more accessible areas, traps or bait stations will be laid, depending on the density of pest populations. High predator numbers can overwhelm trapping networks in some areas. In those cases, aerial 1080 pest control will supplement existing trapping.

Aerial 1080 pest control will target rats, but stoats will also be killed through eating poisoned rodent carcasses. Operations begin with an aerial pre-feed of non-toxic baits to encourage rats to eat the 1080 baits that are applied later.

Time frame

Operations will be triggered as rodent populations reach monitored thresholds. Operations, which are weather dependent, will take place when they are most effective between May and November. Dates will vary between sites and will be confirmed closer to operations taking place.

Planning

DOC is working closely with iwi and consulting with key stakeholders before finalising details. Before operations begin, DOC will contact affected neighbours, put up warning signs and advertise in local newspapers. Use of 1080 requires the consent of the Environmental Protection Authority, and permission from the Ministry of Health. The process includes an assessment of environmental effects (AEE) to safeguard the public and the environment.

What you need to know

The Department of Conservation complies with all relevant regulations and takes a precautionary approach to the aerial application of pesticides.

- *The 1080 cereal baits are about 2 cm long, cylinder-shaped and are dyed green.*
- *Non-toxic pre-feed cereal pellets are about 2 cm long, cylinder-shaped but are fawn-coloured (not dyed).*

Managing risk

Dogs, in particular, are highly susceptible to 1080. The risk to dogs from poisoned carcasses will remain until they have completely rotted, perhaps for more than 6 months.

Precautionary approach

Risks can be eliminated by following these simple rules:

- **DO NOT touch bait**
- **WATCH CHILDREN at all times**
- **DO NOT EAT animals from this area**
- **Poison baits or carcasses are DEADLY to DOGS**

Observe these rules whenever you see warning signs about pesticides. Warning signs indicate pesticide residues may still be present in baits or animals. When signs are removed, this means you can resume normal activities in the area. Please report suspected vandalism or unauthorised removal of signs. If in doubt, check with your local DOC office.

More information

s 9(2)(a), 9(2)(g)(i)

Operations Manager
Department of Conservation Te Anau
Lakefront Drive, Te Anau 9600
Phone: 03 249 0200

What to do if you suspect poisoning

Contact emergency services: 111

National Poisons Centre: 0800 764 766

15/03/19

Also see doc.govt.nz/battleforourbirds



Department of
Conservation
Te Papa Atawhai

Protect our species in the Hollyford, Fiordland National Park



Pest control to protect native species from widespread predator plagues

A heavy seeding (mast) will occur in many forests this year. This natural event, that should benefit native species, will be hijacked by introduced predators as rodent and stoat numbers will skyrocket. Seedfall and rodent levels will be monitored at sites where rare and endangered native species are under greatest threat. When rodent numbers meet critical levels, that will trigger predator control. Without predator control some species such as yellowhead/mōhua, kākā, orange-fronted parakeet/kākāriki karaka, rock wren/pīwauwau and bats/pekapeka will suffer heavy losses.

Predicting increased rodent populations – 2014 and 2016

A widespread heavy seedfall in South Island beech forests in early 2014 and again in 2016 led to escalating rat and mice numbers. Two events of such magnitude in quick succession was thought to be unusual. DOC, with the help of NIWA, is getting better at predicting these mast events.

Pest control works

DOC carried out aerial 1080 pest control in the winters following the prolific forest flowering over more than 600,000 hectares, each season. Monitoring showed an average rat kill of about 95%, which reduced rodents to undetectable levels at most sites and stoat plagues were avoided.

Outcomes

Intensive species monitoring showed the nesting success of rock wren, mōhua, robin and rifleman was significantly higher within pest control areas than outside. Go to doc.govt.nz/our-work/battle-for-our-birds.

2019 – the battle continues

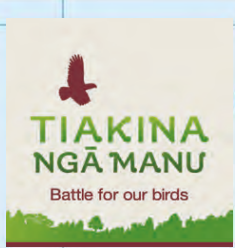
Extensive seeding is occurring again in 2019 but on an even larger scale. This is likely to be the biggest mast in decades. We will have a major pest problem on our hands.



Mōhua perching on a branch. Photo: James Reardon



Rockwren sunning itself on a rock. Photo: James Reardon



1:155,000
 NZGD 2000 New Zealand Transverse Mercator
 Not for navigation
 Crown Copyright Reserved
 Base map: LINZ Topo50/250
 DOC Conceptual Services
 26/03/2019
 Hollyford_Factsheet_Map.mxd
 QGIS_Analysis/Project/Tools/BFCB/Hollyford

Hollyford

1080 Aerial Predator Control 2019-20
 Proposed aerial application area: 40538.4 ha



New Zealand Government

Hollyford sites and values

Where heavy seedfall occurs, we can expect predator numbers to soar. To be ready to protect native species at risk, DOC is planning predator control at the following sites:

Lower Hollyford

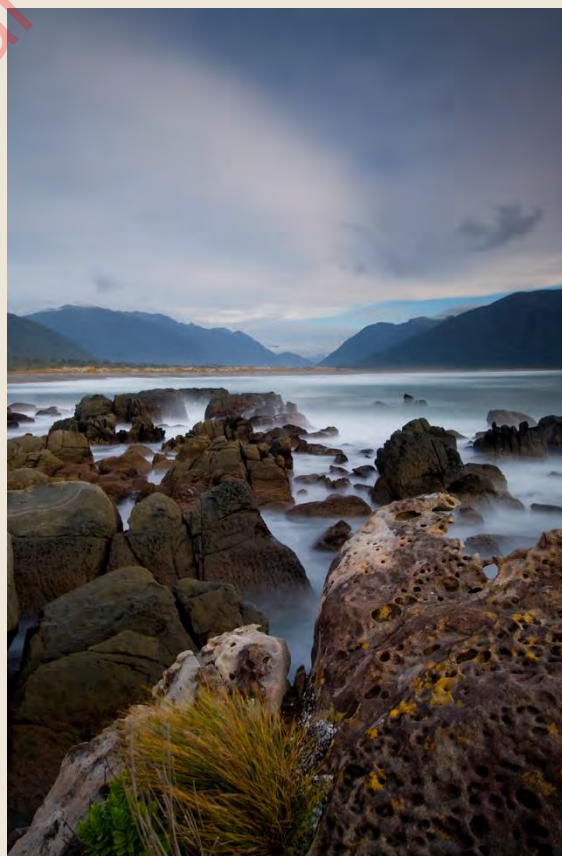
- The lower Hollyford valley contains a rich mix of podocarp, beech and broadleaf canopies
- Predator levels are higher in this environment than in the pure beech ecosystems in the upper valley
- Predators threaten native species in the area: special species such as fernbird, kaka, falcon, parakeets and kea all live and breed in the lower valley
- A successful community pest control programme is run by the Hollyford Conservation Trust, with very good results. But trapping is insufficient to control predators in most years, when very high predator numbers are recorded
- Aerial 1080 provides a way to control very high rat numbers during rodent plagues, in a way other methods cannot
- Aerial 1080 also controls possums to protect forest ecosystems and canopy health

Upper Hollyford

- The upper Hollyford is a beech dominated ecosystem, surrounded by mountainous peaks 1800-2000 metres above sea level
- High predator numbers threaten native species such as whio, kaka, mōhua, kea, fuchsia and mistletoe (*Ileostylus* species)
- There is a successful trapping partnership in place with Air New Zealand and local volunteer groups, as part of the Great Walks initiative. However, trapping is insufficient in most years when predators reach very high numbers
- Aerial 1080 provides a way to control very high rat numbers during rodent plagues, in a way other methods cannot
- Aerial 1080 also controls possums to protect forest ecosystems and canopy health



Looking across the mountain tops in the Upper Hollyford (Routeburn track). Photo: DOC



Martins Bay, at the mouth of the Hollyford river. Photo: DOC



A range of pest control methods will be used including traps and toxins

Aerial application of 1080 baits is the most cost-effective predator control method over large areas. It is the only viable method in remote or rugged terrain. In more accessible areas, traps or bait stations will be laid, depending on the density of pest populations. High predator numbers can overwhelm trapping networks in some areas. In those cases, aerial 1080 pest control will supplement existing trapping.

Aerial 1080 pest control will target rats, but stoats will also be killed through eating poisoned rodent carcasses. Operations begin with an aerial pre-feed of non-toxic baits to encourage rats to eat the 1080 baits that are applied later.

Time frame

Operations will be triggered as rodent populations reach monitored thresholds. Operations, which are weather dependent, will take place when they are most effective between June and November. Dates will vary between sites and will be confirmed closer to operations taking place.

Planning

DOC is working closely with iwi and consulting with key stakeholders before finalising details. Before operations begin, DOC will contact affected neighbours, put up warning signs and advertise in local newspapers. Use of 1080 requires the consent of the Environmental Protection Authority, and permission from the Ministry of Health. The process includes an assessment of environmental effects (AEE) to safeguard the public and the environment.

What you need to know

The Department of Conservation complies with all relevant regulations and takes a precautionary approach to the aerial application of pesticides.

- The 1080 cereal baits are about 2 cm long, cylinder-shaped and are dyed **green**.
- Non-toxic pre-feed cereal pellets are about 2 cm long, cylinder-shaped but are **fawn-coloured** (not dyed).

Managing risk

Dogs, in particular, are highly susceptible to 1080. The risk to dogs from poisoned carcasses will remain until they have completely rotted, perhaps for more than 6 months.

Precautionary approach

Risks can be eliminated by following these simple rules:

- **DO NOT touch bait**
- **WATCH CHILDREN at all times**
- **DO NOT EAT animals from this area**
- **Poison baits or carcasses are DEADLY to DOGS**

Observe these rules whenever you see warning signs about pesticides. Warning signs indicate pesticide residues may still be present in baits or animals. When signs are removed, this means you can resume normal activities in the area. Please report suspected vandalism or unauthorised removal of signs. If in doubt, check with your local DOC office.

More information

s 9(2)(a), 9(2)(g)(ii)

Operations Manager *Pou Matarautaki*
DOC Te Anau
03 249 0200

What to do if you suspect poisoning

Contact emergency services: **111**

National Poisons Centre: 0800 764 766

March 2019

Also see doc.govt.nz/battleforourbirds



Department of
Conservation
Te Papa Atawhai



TIAKINA
NGĀ MANU

Battle for our birds

Predator RESPONSE

2019



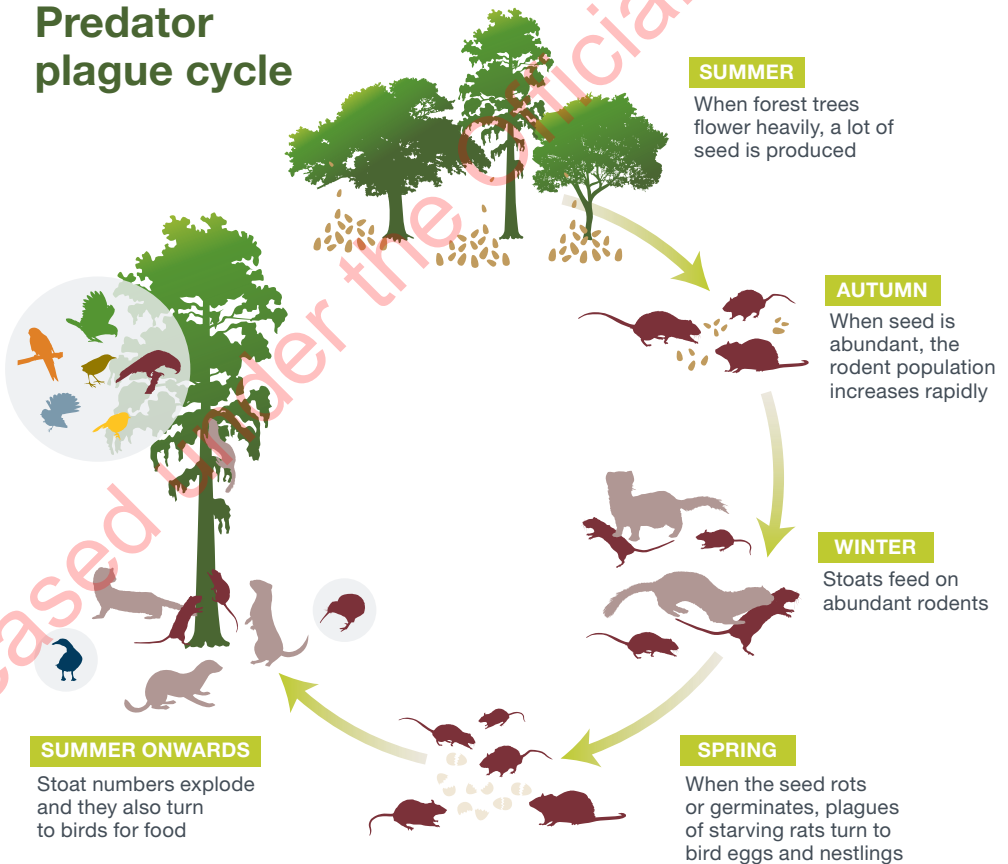
Department of
Conservation
Te Papa Atawhai

25 million native birds are killed by predators like possums, stoats and rats each year¹

Heavy seeding of trees in our native forests will drive rodent and stoat numbers higher than normal this year and those pests will prey on threatened species including birds, bats and invertebrates.

The Department of Conservation will prioritise its predator control response in key ecosystems to protect New Zealand's native wildlife.

Predator plague cycle



¹ John Innes. Landcare Research



Degrees of control

In forests in years when there is no heavy seeding or mast, many native birds can tolerate the low levels of rats and stoats present and little or no pest control is necessary.

During years when mast events occur at just a few sites, localised pest control traps and bait stations will do the trick.

When heavy seedfall is more widespread, as it is this year, rats and stoats have to be controlled over very large areas.

Who/blue duck

Status: In serious trouble (Nationally Vulnerable)

Population: More than 1000 breeding pairs

Distribution: In good numbers where conservation efforts protect populations.

Who duckling survival rates at the Tongariro Forest Security Site

Before pest control (2004)



For every 3 breeding pairs of who, 2 ducklings made it to fledging

After aerial 1080 and trapping (2011)



For every 3 breeding pairs of who, 6 ducklings made it to fledging



Photo: Alan Reith

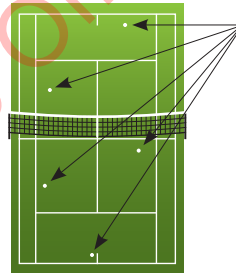
Controlling predators

The Department of Conservation uses a range of pest control tools to suit the particular need. Trapping and other ground-based predator control methods play an important part in ongoing control but cannot be easily scaled up to respond rapidly to immediate pest threats.

Biodegradable 1080 is applied by air over large areas of rugged terrain to knock down rats, stoats and possums.

Aerial 1080

1080 is biodegradable, breaks down quickly in the environment and does not leave permanent residues in water, soil, plants or animals. The active component occurs naturally in many plants found in Australia, South America and Africa as a defence against browsing animals.



4–6 baits are dropped in an area the size of a tennis court.

Approximately **12% of public conservation land** is to be treated with 1080 during this year's pest control operations.

Ground control

Conventional and re-setting traps and bait stations are used for **longer term** and **localised suppression** of pest populations.



Conventional traps



Bait stations



North Island brown kiwi

Status: In some trouble (Declining)

Population: 25,000

Distribution: Patchy throughout the northern North Island.

Without predator control:



Only **5%** of kiwi chicks hatched in the wild will make it until they are old enough to breed – their 4th birthday.

With predator control:



Up to **60%** of kiwi chicks hatched in the wild will survive to breeding age.



More than 583 kiwi have been monitored throughout 1080 operations since 1990. Over that time, not one has died as a result of 1080 poisoning.



Re-setting traps

Photo: Neil Hutton



Populations under threat


Widespread forest seeding this year will lead to an increase in rats and stoats, putting our native wildlife at risk. The highlighted areas are home to some of our most vulnerable species and have been targeted as the areas most in need of predator control.

Significant seedfall 2019

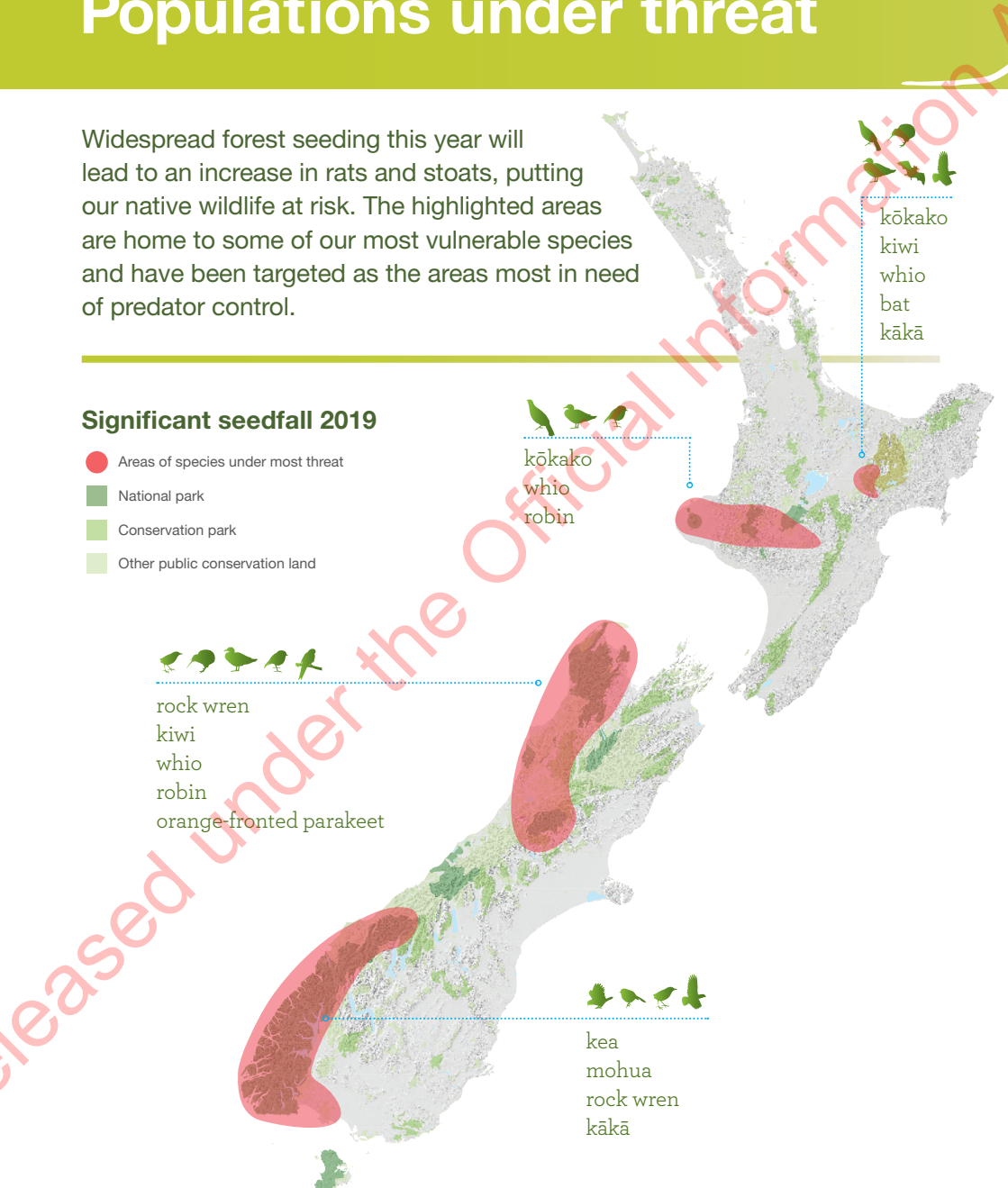
- Areas of species under most threat
- National park
- Conservation park
- Other public conservation land

- 
- rock wren
 - kiwi
 - whio
 - robin
 - orange-fronted parakeet

- 
- kōkako
 - whio
 - robin

- 
- kōkako
 - kiwi
 - whio
 - bat
 - kākā

- 
- kea
 - mohua
 - rock wren
 - kākā



Great spotted kiwi



Photo: Rod Morris

Status: In serious trouble (Nationally Vulnerable)

Population: 15,000

Distribution: Confined to three discrete populations, in northwestern Nelson, Paparoa Range and Lewis Pass to Arthur's Pass.

Powelliphanta snails



Photo: Kath Walker

Status: In serious trouble

Population: Declining

Distribution: Widely but sparsely spread throughout western South Island and lower North Island.

Rock wren



Photo: Andrew Walmsley

Status: In serious trouble (Nationally Endangered)

Population: Unknown

Distribution: Widely but patchily distributed through alpine and sub-alpine areas of the South Island, most commonly in Fiordland, South Westland, Mt Aspiring and Aoraki/Mt Cook National Parks. Transferred successfully to Secretary Island in Fiordland.

Orange-fronted parakeet



Photo: Sabine Bernert

Status: In serious trouble (Nationally Critical)

Population: Fewer than 100 mature parakeets on mainland, and perhaps 200–300 on islands

Distribution: Restricted to South Island beech forest valleys: the Hawdon, Andrews and Poulter valleys in Arthur's Pass National Park and the south branch of the Hurunui valley in Lake Sumner Forest Park.

Mohua



Photo: James Reardon

Status: In some trouble (Recovering)

Population: Approx 5,000

Distribution: Strongholds where pest control is carried out. In good numbers on some offshore islands.

Whio



Photo: Herb Christophers

Status: In serious trouble (Nationally Vulnerable)

Population: Breeding population unlikely to be more than 1000 pairs

Distribution: Forested headwater catchments along the ranges of both islands.



Long-term monitoring

Doubling native bird numbers in the Landsborough valley

For 20 years our ‘bird counters’ have been going to the remote Landsborough valley in South Westland to monitor the effects of sustained predator control on bird life.

Native bird numbers have doubled since pest control began. Most of the 13 different native bird species increased.

One of the most threatened birds in the monitoring area, mohua (yellowhead), has increased in number 24-fold from 14 to 338 birds.

Monitoring outcomes is important. Standardised ‘5-minute bird counts’ have been carried out by the same

people for the past 20 years which has ensured consistency.

The results of this painstaking monitoring are impressive and highlight that where we control pests consistently over whole valleys and forests, we can turn around the fortunes of native species.

This outcome bodes well for efforts towards Predator Free 2050 as the long term goal.



Grey warbler. Photo: Janice McKenna



Rifleman/titipounamu. Photo: DOC



Tomtit/miromiro. Photo: Leon Berard

The Department of Conservation is planning to manage pests in response to a predicted predator plague this year. For more information visit www.doc.govt.nz/battleforourbirds


This publication is produced using paper sourced from well-managed, renewable and legally logged forests.

Front cover: A whio pair. Photo: Matt Binns

Published by: Department of Conservation, PO Box 10420, Wellington 6143

Editing and design: Creative Services, Conservation House, Wellington
January 2019

Appendix 5: notification letter to iwi

Archived: Monday, 23 September 2019 10:46:20 AM
From: admin
Sent: Sun, 9 Jun 2019 23:29:08 +0000Authentication
To: admin
Subject: Tiakina Nga Manu (Battle For Our Birds) Consultation
Sensitivity: Normal
Attachments: 
Iwi_Hollyford_Tiakina Nga Manu.pdf;

Good Morning

Please find attached a letter regarding upcoming pest control operation/s we are undertaking in Fiordland this Winter/Spring as part of the Tiakina Nga Manu programme (formally Battle for our Birds), on behalf of the Department of Conservation.

If we have your current postal address in our database then you should have received an information pack in the mail last week. If you have not received one, could you please confirm your current postal address. Otherwise, all of the information can be found here: <http://www.ecofx.co.nz/tiakina-nga-manu/>

If you have any questions please contact us using the details provided in the letter.

Kind Regards,

Office Administrator
EcoFX Ltd
32 Huiputea Drive
PO Box 248
Otorohanga

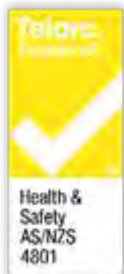
Phone 07 873 8130
Fax 07 873 6904

EcoFX, "Protecting Your Natural Heritage"

WARNING This email contains information which is CONFIDENTIAL and may be subject to LEGAL PRIVILEGE. If you are not the intended recipient, you must not peruse, use, disseminate, distribute or copy this email or attachments. If you have received this in error, please notify us immediately by return email, facsimile or telephone (call us collect) and delete this email. Thank you.

ECOFX LIMITED ACCEPTS NO RESPONSIBILITY FOR CHANGES MADE TO THIS EMAIL OR TO ANY ATTACHMENTS AFTER TRANSMISSION FROM ECOFX LIMITED.

 Please consider the environment before printing this e-mail



Released under the Official Information Act



31 May 2019

Group
Name
Address

Kia Ora Name

Hollyford: Tiakina Ngā Manu Programme Consultation

EcoFX has been contracted by the Department of Conservation to undertake large scale aerial 1080 operations in the Clinton-Eglinton, Kepler and Upper and Lower Hollyford Valleys as part of the Department of Conservation Tiakina Ngā Manu (formerly Battle for our birds- BFOB) programme.

EcoFX has previously delivered "Battle for our birds" programmes in the Clinton-Eglinton and Hollyford Valley. We have attached Department of Conservation Tiakina Ngā Manu fact sheets of the programme/s for your information. They also have operational maps included, with more detailed maps available on request. We have also supplied a comprehensive information pack with key operational information.

The Tiakina Ngā Manu programme is being undertaken as part of a larger nationwide aerial predator control programme due to a 2019 "Mega Mast" beech and podocarp seeding event. Its purpose is to protect at risk native species in the programme areas from predation from rats and other key predators such as stoats, weasels and possums. At risk species include: southern tokoeka/kiwi, whio/blue duck, yellow-crowned kākārīki, rock wren, mohua, short and long tailed bats, Fiordland crested penguin, kea and South Island kākā.

You have been identified as being an Iwi Partner for Biodiversity Programme/s to the Department of Conservation in the Hollyford operational area. Part of the initial process of consultation involves contact with interested parties. This could involve a number of forms of contact such as meetings, letters, email, e-text or phone contact. You may have received initial stakeholder communication or correspondence from the Department of Conservation Te Anau Office about these programmes.

The programme is intended to be undertaken from late July early August to mid-September 2019, but may occur as late as October if the weather is unfavourable. It is intended that the order that programmes will be delivered is Clinton-Eglinton, Kepler and Hollyford, although this is dependant on local weather conditions and the priority of programmes being delivered by other contractors.

32 Huiputea Drive
PO Box 248
Otorohanga 3940
NEW ZEALAND

Telephone: 07 873 8130

Facsimile: 07 873 6904

E-mail: admin@ecofx.co.nz

EcoFX - Protecting Your Natural Heritage

Phases for the programme are as follows:

- Non-toxic prefeed cereal baits will be sown over the treatment blocks at a rate of 1.5 kg per ha.
- Approximately 7 days later toxic baits will be sown over the treatment area at a rate of 1.5 kg/ha.
- Both phases are weather dependant requiring 2-3 fine nights with minimal rainfall.

As part of public notification, EcoFX will be placing advertisements in local and regional papers circulating in the wider area to inform the public of the operation and the risks.

EcoFX will also be obtaining requisite consents under the Environmental Protection Agency requirements from Public Health South.

We will be contacting you by email, e-text or phone contact prior to each phase of the Hollyford programme commencing.

In addition, EcoFX will be erecting signage throughout the operational areas at key points such as camping grounds, huts, tracks, jetties and public access areas.

If you wish to receive ongoing regular updates about the programmes throughout their delivery, including more specific detail on the timing of the operations, please email admin@ecofx.co.nz.

If you require further information in the meantime, please contact s 9(2)(a) or s 9(2)(a) or our office on (07) 873 8130.


Kind regards

s 9(2)(a)

s 9(2)(a)

Operational Controller's

Appendix 6: notification letter to landowners

Archived: Monday, 23 September 2019 10:46:11 AM
From: [admin](#)
Sent: Sun, 9 Jun 2019 23:31:16 +0000Authentication
To: [admin](#)
Subject: Tiakina Nga Manu (Battle For Our Birds) Consultation
Sensitivity: Normal
Attachments: 
[andowners_Hollyford_Tiakina Nga Manu.pdf](#)

Good Morning

Please find attached a letter regarding upcoming pest control operation/s we are undertaking in Fiordland this Winter/Spring as part of the Tiakina Nga Manu programme (formally Battle for our Birds), on behalf of the Department of Conservation.

If we have your current postal address in our database then you should have received an information pack in the mail last week. If you have not received one, could you please confirm your current postal address. Otherwise, all of the information can be found here: <http://www.ecofx.co.nz/tiakina-nga-manu/>

If you have any questions please contact us using the details provided in the letter.

Kind Regards,

Office Administrator
EcoFX Ltd
32 Huiputea Drive
PO Box 248
Otorohanga

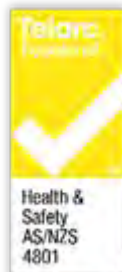
Phone 07 873 8130
Fax 07 873 6904


EcoFX, "Protecting Your Natural Heritage"

WARNING This email contains information which is CONFIDENTIAL and may be subject to LEGAL PRIVILEGE. If you are not the intended recipient, you must not peruse, use, disseminate, distribute or copy this email or attachments. If you have received this in error, please notify us immediately by return email, facsimile or telephone (call us collect) and delete this email. Thank you.

ECOFX LIMITED ACCEPTS NO RESPONSIBILITY FOR CHANGES MADE TO THIS EMAIL OR TO ANY ATTACHMENTS AFTER TRANSMISSION FROM ECOFX LIMITED.

 Please consider the environment before printing this e-mail



Archived: Monday, 23 September 2019 10:46:40 AM
From: admin
Sent: Sun, 9 Jun 2019 23:31:28 +0000Authentication
To: admin
Subject: Tiakina Nga Manu (Battle For Our Birds) Consultation
Sensitivity: Normal
Attachments: 
[andowners_Big Bay_Hollyford_Tiakina Nga Manu.pdf](#)

Good Morning

Please find attached a letter regarding upcoming pest control operation/s we are undertaking in Fiordland this Winter/Spring as part of the Tiakina Nga Manu programme (formally Battle for our Birds), on behalf of the Department of Conservation.

If we have your current postal address in our database then you should have received an information pack in the mail last week. If you have not received one, could you please confirm your current postal address. Otherwise, all of the information can be found here: <http://www.ecofx.co.nz/tiakina-nga-manu/>

If you have any questions please contact us using the details provided in the letter.

Kind Regards,

Office Administrator
EcoFX Ltd
32 Huiputea Drive
PO Box 248
Otorohanga

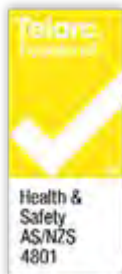
Phone 07 873 8130
Fax 07 873 6904

EcoFX, "Protecting Your Natural Heritage"

WARNING This email contains information which is CONFIDENTIAL and may be subject to LEGAL PRIVILEGE. If you are not the intended recipient, you must not peruse, use, disseminate, distribute or copy this email or attachments. If you have received this in error, please notify us immediately by return email, facsimile or telephone (call us collect) and delete this email. Thank you.

ECOFX LIMITED ACCEPTS NO RESPONSIBILITY FOR CHANGES MADE TO THIS EMAIL OR TO ANY ATTACHMENTS AFTER TRANSMISSION FROM ECOFX LIMITED.

 Please consider the environment before printing this e-mail





31 May 2019

Group
Name
Address

Dear Name

Hollyford Tiakina Ngā Manu Operation Consultation

EcoFX has been contracted by the Department of Conservation to undertake a large scale aerial 1080 operation in the Upper and Lower Hollyford Valleys as part of the Department of Conservation Tiakina Ngā Manu (formerly Battle for our Birds- BFOB) programme.

EcoFX last delivered the BFOB programme in the Hollyford in September 2017. I have attached a Hollyford Tiakina Ngā Manu fact sheet for your information. We have also supplied a comprehensive information pack with key operational information.

The Tiakina Ngā Manu Hollyford programme is being undertaken as part of a larger nationwide aerial predator control programme due to a 2019 "Mega Mast" beech and podocarp seeding event. Its purpose is to protect at risk native species in the programme areas from predation from rats and other key predators such as stoats, weasels and possums. At risk species include: whio /blue duck, yellow-crowned kākārīki, rock wren, mohua, short and long tailed bats, Fiordland crested penguin, kea and South Island kākā.

You have a property located within the operational area. Part of the initial process of consultation involves personal contact with affected parties. This could involve a number of forms of contact such as meetings, letters, email, e-text or phone contact. A representative from EcoFX will be in contacting you in the near future.

Specifically, EcoFX will be seeking your written permission to treat all or some of your land as part of the larger operation. Any untreated areas increase the chance of pests surviving, allowing for re-infestation.

Part of the process of obtaining your permission is agreeing to aerial buffers around cribs, lodges, houses and huts if required. This will also include the management of and mitigation for any water supplies used for human consumption i.e. roof or stream water.

The programme is intended to be undertaken from late July early August to mid-September 2019, but may occur as late as October if the weather is unfavourable. It is intended that the order that programmes will be delivered is Clinton-Eglinton, Kepler and Hollyford, although this is dependent on local weather conditions and the priority of programmes being delivered by other contractors.

32 Huipurea Drive
PO Box 248
Otorohanga 3940
NEW ZEALAND

Telephone: 07 873 8130

Facsimile: 07 873 6904

E-mail: admin@ecofx.co.nz

EcoFX - Protecting Your Natural Heritage

Phases for the programme are as follows:

- Non-toxic prefeed cereal baits will be sown over the treatment blocks at a rate of 1.5 kg per ha.
- Approximately 7 days later toxic baits will be sown over the treatment area at a rate of 1.5 kg/ha.
- Both phases are weather dependant requiring 2-3 fine nights with minimal rainfall.

EcoFX will also be obtaining requisite consents under the Environmental Protection Agency requirements from Public Health South.

As part of public notification, EcoFX will be placing advertisements in local and regional papers circulating in the wider area to inform the public of the operation and the risks.

We will be contacting you by email, e-text or phone contact prior to each phase of the Hollyford programme commencing.

In addition, EcoFX will be erecting signage throughout the Hollyford Valley at key points such as tracks, jetties and public access areas.

If you require further information in the meantime, please contact s 9(2)(a) or s 9(2)(a) or our office on (07) 873 8130.


Kind regards

s 9(2)(a)

s 9(2)(a)

Operational Controller's

Appendix 7: notification letter to concessionaires

Archived: Monday, 23 September 2019 10:46:32 AM
From: admin
Sent: Sun, 9 Jun 2019 23:29:39 +0000Authentication
To: admin
Subject: Tiakina Nga Manu (Battle For Our Birds) Consultation
Sensitivity: Normal
Attachments: 
[Concessionaires_Hollyford_Tiakina Nga Manu.pdf](#)

Good Morning

Please find attached a letter regarding upcoming pest control operation/s we are undertaking in Fiordland this Winter/Spring as part of the Tiakina Nga Manu programme (formally Battle for our Birds), on behalf of the Department of Conservation.

If we have your current postal address in our database then you should have received an information pack in the mail last week. If you have not received one, could you please confirm your current postal address. Otherwise, all of the information can be found here: <http://www.ecofx.co.nz/tiakina-nga-manu/>

If you have any questions please contact us using the details provided in the letter.

Kind Regards,

Office Administrator
EcoFX Ltd
32 Huiputea Drive
PO Box 248
Otorohanga

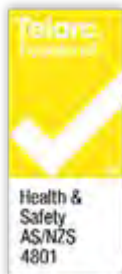
Phone 07 873 8130
Fax 07 873 6904

EcoFX, "Protecting Your Natural Heritage"

WARNING This email contains information which is CONFIDENTIAL and may be subject to LEGAL PRIVILEGE. If you are not the intended recipient, you must not peruse, use, disseminate, distribute or copy this email or attachments. If you have received this in error, please notify us immediately by return email, facsimile or telephone (call us collect) and delete this email. Thank you.

ECOFX LIMITED ACCEPTS NO RESPONSIBILITY FOR CHANGES MADE TO THIS EMAIL OR TO ANY ATTACHMENTS AFTER TRANSMISSION FROM ECOFX LIMITED.

 Please consider the environment before printing this e-mail





31 May 2019

Group
Name
Address

Dear Name

Hollyford: Tiakina Ngā Manu Programme Consultation

EcoFX has been contracted by the Department of Conservation to undertake large scale aerial 1080 operations in the Clinton- Eglinton, Kepler and Upper and Lower Hollyford Valleys as part of the Department of Conservation Tiakina Ngā Manu (formerly Battle for our Birds- BFOB) programme.

EcoFX has previously delivered "Battle for our Birds" programmes in the Clinton-Eglinton and Hollyford Valley. We have attached a Department of Conservation Tiakina Ngā Manu fact sheet of the programme/s for your information. They also have operational maps included, with more detailed maps available on request. We have also supplied a comprehensive information pack with key operational information.

The Tiakina Ngā Manu programme is being undertaken as part of a larger nationwide aerial predator control programme due to a 2019 "Mega Mast" beech and podocarp seeding event. Its purpose is to protect at risk native species in the programme areas from predation from rats and other key predators such as stoats, weasels and possums. At risk species include: southern tokoeka/kiwi, whio/blue duck, yellow-crowned kākāriki, rock wren, mohua, short and long tailed bats, Fiordland crested penguin, kea and South Island kākā.

You have been identified as having an interest in the Hollyford operational area either as a concessionaire to the Department of Conservation or as an interested party. Part of the initial process of consultation involves personal contact with affected parties. This could involve a number of forms of contact such as meetings, letters, email, e-text or phone contact. You may have received initial communication or correspondence from the Department of Conservation Te Anau Office about these programmes.

The programme is intended to be undertaken from late July early August to mid-September 2019, but may occur as late as October if the weather is unfavourable. It is intended that the order that the programmes will be delivered is Clinton-Eglinton, Kepler and Hollyford, although this is dependent on local weather conditions and the priority of programmes being delivered by other contractors.

32 Huiputea Drive
PO Box 248
Otorohanga 3940
NEW ZEALAND

Telephone: 07 873 8130

Facsimile: 07 873 6904

E-mail: admin@ecofx.co.nz

EcoFX - Protecting Your Natural Heritage

Phases for the programme are as follows:

- Non-toxic prefeed cereal baits will be sown over the treatment blocks at a rate of 1.5 kg per ha.
- Approximately 7 days later toxic baits will be sown over the treatment area at a rate of 1.5 kg/ha.
- Both phases are weather dependant requiring 2-3 fine nights with minimal rainfall.

As part of public notification, EcoFX will be placing advertisements in local and regional papers circulating in the wider area to inform the public of the operation and the risks.

EcoFX will also be obtaining requisite consents under the Environmental Protection Agency requirements from Public Health South.

We will be contacting you by email, e-text or phone contact prior to each phase of the Hollyford programme commencing.

In addition, EcoFX will be erecting signage throughout the operational areas at key points such as camping grounds, huts, tracks, jetties and public access areas.


If you wish to receive ongoing regular updates about the programme throughout the delivery, including more specific detail on the timing of the operation, please email admin@ecofx.co.nz.

If you require further information in the meantime, please contact s 9(2)(a) or s 9(2)(a) or our office on (07) 873 8130.

Kind regards

s 9(2)(a)

s 9(2)(a)
Operational Controller's

Archived: Monday, 23 September 2019 10:4 : 9 AM
From: admin
Sent: Sun, 9 Jun 2019 23:2 :13 +0000Authentication
To: admin
Subject: Tiakina Nga Manu (Battle For Our Birds) Consultation
Sensitivity: Normal
Attachments: 
Ser ice ro iders_Hollyford_Tiakina Nga Manu.pdf;

Good Morning

Please find attached a letter regarding upcoming pest control operation/s we are undertaking in Fiordland this Winter/Spring as part of the Tiakina Nga Manu programme (formally Battle for our Birds), on behalf of the Department of Conservation.

If we have your current postal address in our database then you should have received an information pack in the mail last week. If you have not received one, could you please confirm your current postal address. Otherwise, all of the information can be found here: <http://www.ecofx.co.nz/tiakina-nga-manu/>

If you have any questions please contact us using the details provided in the letter.

Kind Regards,

Office Administrator
EcoFX Ltd
32 Huiputea Drive
PO Box 248
Otorohanga

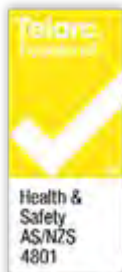
Phone 07 873 8130
Fax 07 873 6904

EcoFX, "Protecting Your Natural Heritage"

WARNING This email contains information which is CONFIDENTIAL and may be subject to LEGAL PRIVILEGE. If you are not the intended recipient, you must not peruse, use, disseminate, distribute or copy this email or attachments. If you have received this in error, please notify us immediately by return email, facsimile or telephone (call us collect) and delete this email. Thank you.

ECOFX LIMITED ACCEPTS NO RESPONSIBILITY FOR CHANGES MADE TO THIS EMAIL OR TO ANY ATTACHMENTS AFTER TRANSMISSION FROM ECOFX LIMITED.

 Please consider the environment before printing this e-mail





31 May 2019

Group
Name
Address

Dear Name

Hollyford: Tiakina Ngā Manu Programme Consultation

EcoFX has been contracted by the Department of Conservation to undertake large scale aerial 1080 operations in the Clinton- Eglinton, Kepler and Upper and Lower Hollyford Valleys as part of the Department of Conservation Tiakina Ngā Manu (formerly Battle for our Birds- BFOB) programme.

EcoFX has previously delivered "Battle for our Birds" programmes in the Clinton-Eglinton and Hollyford Valley. We have attached Department of Conservation Tiakina Ngā Manu fact sheets of the programme/s for your information. They also have operational maps included, with more detailed maps available on request. We have also supplied a comprehensive information pack with key operational information.

The Tiakina Ngā Manu programme is being undertaken as part of a larger nationwide aerial predator control programme due to a 2019 "Mega Mast" beech and podocarp seeding event. Its purpose is to protect at risk native species in the programme areas from predation from rats and other key predators such as stoats, weasels and possums. At risk species include: southern tokoeka/kiwi, whio/blue duck, yellow-crowned kākārīki, rock wren, mohua, short and long tailed bats, Fiordland crested penguin, kea and South Island kāka.

You have been identified as an interested party or a service provider for the Hollyford operational area. Part of the initial process of consultation involves contact with interested parties. This could involve a number of forms of contact such as meetings, letters, email, e-text or phone contact. You may have received initial communication or correspondence from the Department of Conservation Te Anau Office about these programmes.

The programme is intended to be undertaken from late July early August to mid-September 2019, but may occur as late as October if the weather is unfavourable. It is intended that the order that programmes will be delivered is Clinton-Eglinton, Kepler and Hollyford, although this is dependent on local weather conditions and the priority of programmes being delivered by other contractors.

32 Huiputea Drive
PO Box 248
Otorohanga 3940
NEW ZEALAND

Telephone: 07 873 8130

Facsimile: 07 873 6904

E-mail: admin@ecofx.co.nz

EcoFX - Protecting Your Natural Heritage

Phases for the programme are as follows:

- Non-toxic prefeed cereal baits will be sown over the treatment blocks at a rate of 1.5 kg per ha.
- Approximately 7 days later toxic baits will be sown over the treatment area at a rate of 1.5 kg/ha.
- Both phases are weather dependant requiring 2-3 fine nights with minimal rainfall.

As part of public notification, EcoFX will be placing advertisements in local and regional papers circulating in the wider area to inform the public of the operation and the risks.

EcoFX will also be obtaining requisite consents under the Environmental Protection Agency requirements from Public Health South.

We will be contacting you by email, e-text or phone contact prior to each phase of the Hollyford programme commencing.

In addition, EcoFX will be erecting signage throughout the operational areas at key points such as camping grounds, huts, tracks, jetties and public access areas to warn the public of the presence of toxins. While these signs are in place, please remember the following rules:

- Do not handle bait
- Children should not be left unattended

If you wish to receive ongoing regular updates about the programmes throughout their delivery, including more specific detail on the timing of the operations, please email admin@ecofx.co.nz.

If you require further information in the meantime, please contact s 9(2)(a) or s 9(2)(a) or our office on (07) 873 8130.


Kind regards

s 9(2)(a)

s 9(2)(a)

Operational Controller's

Appendix 9: notification letter to sponsors, partners and stakeholders

Archived: Monday, 23 September 2019 10:4 :08 AM
From: admin
Sent: Sun, 9 Jun 2019 23:30:09 +0000Authentication
To: admin
Subject: Tiakina Nga Manu (Battle For Our Birds) Consultation
Sensitivity: Normal
Attachments: 
[Stakeholders and Sponsors_Hollyford Operations_Tiakina Nga Manu.pdf](#)

Good Morning

Please find attached a letter regarding upcoming pest control operation/s we are undertaking in Fiordland this Winter/Spring as part of the Tiakina Nga Manu programme (formally Battle for our Birds), on behalf of the Department of Conservation.

If we have your current postal address in our database then you should have received an information pack in the mail last week. If you have not received one, could you please confirm your current postal address. Otherwise, all of the information can be found here: <http://www.ecofx.co.nz/tiakina-nga-manu/>

If you have any questions please contact us using the details provided in the letter.

Kind Regards,

Office Administrator
EcoFX Ltd
32 Huiputea Drive
PO Box 248
Otorohanga

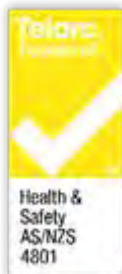
Phone 07 873 8130
Fax 07 873 6904

EcoFX, "Protecting Your Natural Heritage"

WARNING This email contains information which is CONFIDENTIAL and may be subject to LEGAL PRIVILEGE. If you are not the intended recipient, you must not peruse, use, disseminate, distribute or copy this email or attachments. If you have received this in error, please notify us immediately by return email, facsimile or telephone (call us collect) and delete this email. Thank you.

ECOFX LIMITED ACCEPTS NO RESPONSIBILITY FOR CHANGES MADE TO THIS EMAIL OR TO ANY ATTACHMENTS AFTER TRANSMISSION FROM ECOFX LIMITED.

 Please consider the environment before printing this e-mail





31 May 2019

Group
Name
Address

Dear Name

Hollyford: Tiakina Ngā Manu Programme Consultation

EcoFX has been contracted by the Department of Conservation to undertake large scale aerial 1080 operations in the Clinton- Eglinton, Kepler and Upper and Lower Hollyford Valleys as part of the Department of Conservation Tiakina Ngā Manu (formerly Battle for our Birds- BFOB) programme.

EcoFX has previously delivered "Battle for our Birds" programmes in the Clinton-Eglinton and Hollyford Valley. We have attached a Department of Conservation Tiakina Ngā Manu fact sheet of the programme/s for your information. They also have operational maps included, with more detailed maps available on request. We have also supplied a comprehensive information pack with key operational information.

The Tiakina Ngā Manu programme is being undertaken as part of a larger nationwide aerial predator control programme due to a 2019 "Mega Mast" beech and podocarp seeding event. Its purpose is to protect at risk native species in the programme areas from predation from rats and other key predators such as stoats, weasels and possums. At risk species include: southern tokoeka/kiwi, whio/blue duck, yellow-crowned kākārīki, rock wren, mohua, short and long tailed bats, Fiordland crested penguin, kea and South Island kākā.

You have been identified as being a Partner, Sponsor or Stakeholder for Biodiversity Programme/s in the Hollyford operational area to the Department of Conservation. Part of the initial process of consultation involves contact with interested parties. This could involve a number of forms of contact such as meetings, letters, email, e-text or phone contact. You may have received initial stakeholder communication or correspondence from the Department of Conservation Te Anau Office about these programmes.

The programme is intended to be undertaken from late July early August to mid-September 2019, but may occur as late as October if the weather is unfavourable. It is intended that the order that the programmes will be delivered is Clinton-Eglinton, Kepler and Hollyford, although this is dependent on local weather conditions and the priority of programmes being delivered by other contractors.

32 Huiputea Drive
PO Box 248
Otorohanga 3940
NEW ZEALAND

Telephone: 07 873 8130

Facsimile: 07 873 6904

E-mail: admin@ecofx.co.nz

EcoFX - Protecting Your Natural Heritage

Phases for the programme are as follows:

- Non-toxic prefeed cereal baits will be sown over the treatment blocks at a rate of 1.5 kg per ha.
- Approximately 7 days later toxic baits will be sown over the treatment area at a rate of 1.5 kg/ha.
- Both phases are weather dependant requiring 2-3 fine nights with minimal rainfall.

As part of public notification, EcoFX will be placing advertisements in local and regional papers circulating in the wider area to inform the public of the operation and the risks.

EcoFX will also be obtaining requisite consents under the Environmental Protection Agency requirements from Public Health South.

We will be contacting you by email, e-text or phone contact prior to each phase of the Hollyford programme commencing.

In addition, EcoFX will be erecting signage throughout the operational areas at key points such as camping grounds, huts, tracks, jetties and public access areas.

If you wish to receive ongoing regular updates about the programmes throughout their delivery, including more specific detail on the timing of the operations, please email admin@ecofx.co.nz.

If you require further information in the meantime, please contact s 9(2)(a) or s 9(2)(a) or our office on (07) 873 8130.

Kind regards

s 9(2)(a)

s 9(2)(a)
Operational Controller's

Appendix 10: public notice published in local newspapers



Department of
Conservation
Te Papa Atawhai



Upper & Lower Hollyford Valley Fiordland National Park Tiakina Nga Manu Battle for our Birds Pest Control

EcoFX Ltd wishes to advise the public of its intention to aerially apply cereal baits containing the toxin Sodium Fluoroacetate (1080) on the Upper and Lower Valley on or after the 1 August 2019. The actual date of the operation will be dependent on suitable weather.

This work is being conducted as part of the Department of Conservation's Tiakina Nga Manu, Battle for our Birds Programme, to protect native species from rats, stoats and possums.

Description of the Control Area:

Up to 43,000 ha of public conservation land and some privately owned land in the Upper and Lower Hollyford areas of Fiordland National Park and Pyke Forest. The operation includes the whole Hollyford catchment up to the treeline, and as far upstream as east of Monkey Creek and as far downstream as Martins Bay. The treatment area includes parts of the Kaipo and Pyke/Big Bay catchments. The treatment area includes the Hollyford Track and parts of the Routeburn Track.

Method of Control:

Cereal baits containing the pesticide 1080 will be distributed by helicopter over the described area. The 1080 baits are cylindrical pellets approximately 2-3 cm long, cinnamon lured and dyed green.

The 1080 operation will be preceded by an application of non-toxic prefeed baits. The non-toxic prefeed baits are 2 cm long and not dyed.

Always remember when in the area:

- **DO NOT** touch bait or animal carcasses
- **WATCH CHILDREN** at all times
- **DO NOT** eat animals from this area
- **DO NOT** allow **DOGS** access to this area

Observe these rules whenever you see warning signs placed at public access points to treatment areas.

Please call the National Poisons Centre for details regarding sodium fluoroacetate (1080) – ph, 0800 764766.

A detailed map of the treatment area can be viewed at the Department of Conservation Te Anau Visitor Centre 8:30am - 4:00pm. For any further information contact Operational Controller Upper & Lower Hollyford EcoFX: phone. 07 873 8130, EcoFX Ltd, PO Box 248, Otorohanga 3940.

Archived: Monday, 23 September 2019 11:24: 0 AM
From: admin
Sent: Thu, 29 Aug 2019 23:33:39 +0000Authentication
To: admin
Subject: Tiakina Nga Manu Battle for Our Birds coF td pdate
Sensitivity: Normal

Kia Ora,
Tiakina Nga Manu – Battle for Our Birds – EcoFX Ltd Update

As you will already be aware, EcoFX Limited is undertaking three aerial 1080 pest control operations in Fiordland this Winter/Spring on behalf of the Department of Conservation. These are:

- Clinton-Eglinton Aerial
- Kepler Aerial
- Hollyford Aerial

You are receiving this notification as you are listed as either a Service Provider, Concessionaire, Private Landowner, Recreational User, Iwi Partner or Sponsor for at least one (or more) of these three operations.

On the 18th and 19th of August, the Clinton-Eglinton pre-feed was successfully completed. We are now waiting on a fine weather window to undertake the toxic phase of this operation.

The Kepler operation will likely follow once both phases of the Clinton-Eglinton operation is completed, however if there is a more suitable weather window for the Kepler pre-feed, then this will take place first.

The Hollyford operation will follow the Kepler.

A reminder to please check for signage if you are in the area. And

- **DO NOT TOUCH** poison bait
- **WATCH CHILDREN** at all times
- **DO NOT EAT** animals from the area
- Poison bait or carcasses are **DEADLY to DOGS**

We will keep you updated throughout the delivery of these programmes.

Nga Mihi,
Administrative Support
EcoFX Limited
PO Box 248 Otorohanga
EcoFX, "Protecting Your Natural Heritage"

WARNING This email contains information which is CONFIDENTIAL and may be subject to LEGAL PRIVILEGE. If you are not the intended recipient, you must not peruse, use, disseminate, distribute or copy this email or attachments. If you have received this in error, please notify us immediately by return email, facsimile or telephone (call us collect) and delete this email. Thank you.

Phone + 64 7 8738130
Fax + 64 7 8736904

ECOFX LIMITED ACCEPTS NO RESPONSIBILITY FOR CHANGES MADE TO THIS EMAIL OR TO ANY ATTACHMENTS AFTER TRANSMISSION FROM ECOFX LIMITED.

 Please consider the environment before printing this e-mail

