

How to find Haurangi Hut

Grid Ref: NZTopo50 BQ32 671 229
NZMS260 R27 772 845



From Turere Bridge via Orongorongo River

Approx 50 minutes

Follow the Orongorongo River upstream past Big Bend, crossing the river as required.

Continue past the large shingle fan of Goat stream which enters on the true left.

Approximately 1km further up stream, the entrance to Haurangi Hut is marked with a sign and a large orange and red triangle on the true right.

At this point you rejoin the Big Bend Track. Follow the red triangles for another 50 m to a turn off and climb up to Haurangi Hut.

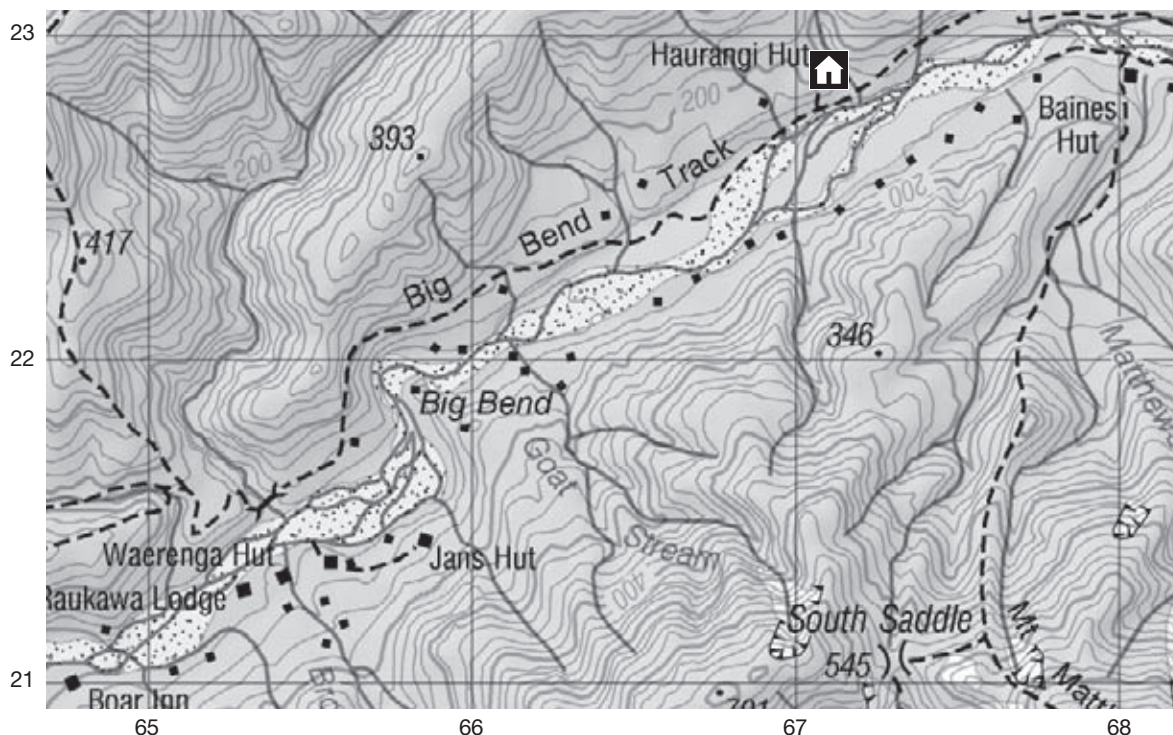
From Turere Bridge via Big Bend Track

Approx 1 hour

The Big Bend Track from Turere Bridge avoids the river crossings and should be used at times of high river flow.

Follow the track upstream for approximately 1hr till you reach the sign for Haurangi Hut (10 metres before the bridge over Haurangi Stream).

A track to the left is marked with red triangles and the hut is visible through the trees.



Do not use the river route when the river is in flood or when there has been sustained rainfall in the area. Use the Big Bend Track instead.

True right and true left of the river are the right and left side when viewed facing downstream.

Published by: Department of Conservation, Kapiti Wellington Area, P.O. Box 5086, Wellington. September 2011.

New Zealand Government

Department of Conservation
Te Papa Atawhai

