

Kina / sea urchin

Evechinus chloroticus

Kina is found throughout New Zealand. It spends the day wedged in the rocks and comes out to graze on algae at night. It can live for over 20 years. For many New Zealanders, harvesting and eating these delicacies is part of everyday life. Demand for kina is increasing overseas and it is becoming a valuable commercial fishery.

In New Zealand increased fishing pressure on both pāua and kina stocks has led fisheries managers to look for ways to enhance production in the existing fishing areas. The aim is to avoid overfishing which could lead to the collapse of a fishery altogether.

There seem to be fewer kina inside Kapiti Marine Reserve than outside the reserve. This can be explained by the fact that numbers of kina predators, such as blue cod and rock lobster have increased in the reserve. Outside marine reserves there are fewer predators and kina numbers appear to have increased. Where there are dense kina populations (or kina barrens), pāua and seaweed do not tend to grow.

Other resources

CD: NZ's Coastal Creatures

New Zealand Geographic magazine #39 July–Sept '98 Passionate about Pāua

www.fish.govt.nz > recreational > pāua > rules

www.forestandbird.org.nz > bestfishguide > species > kina



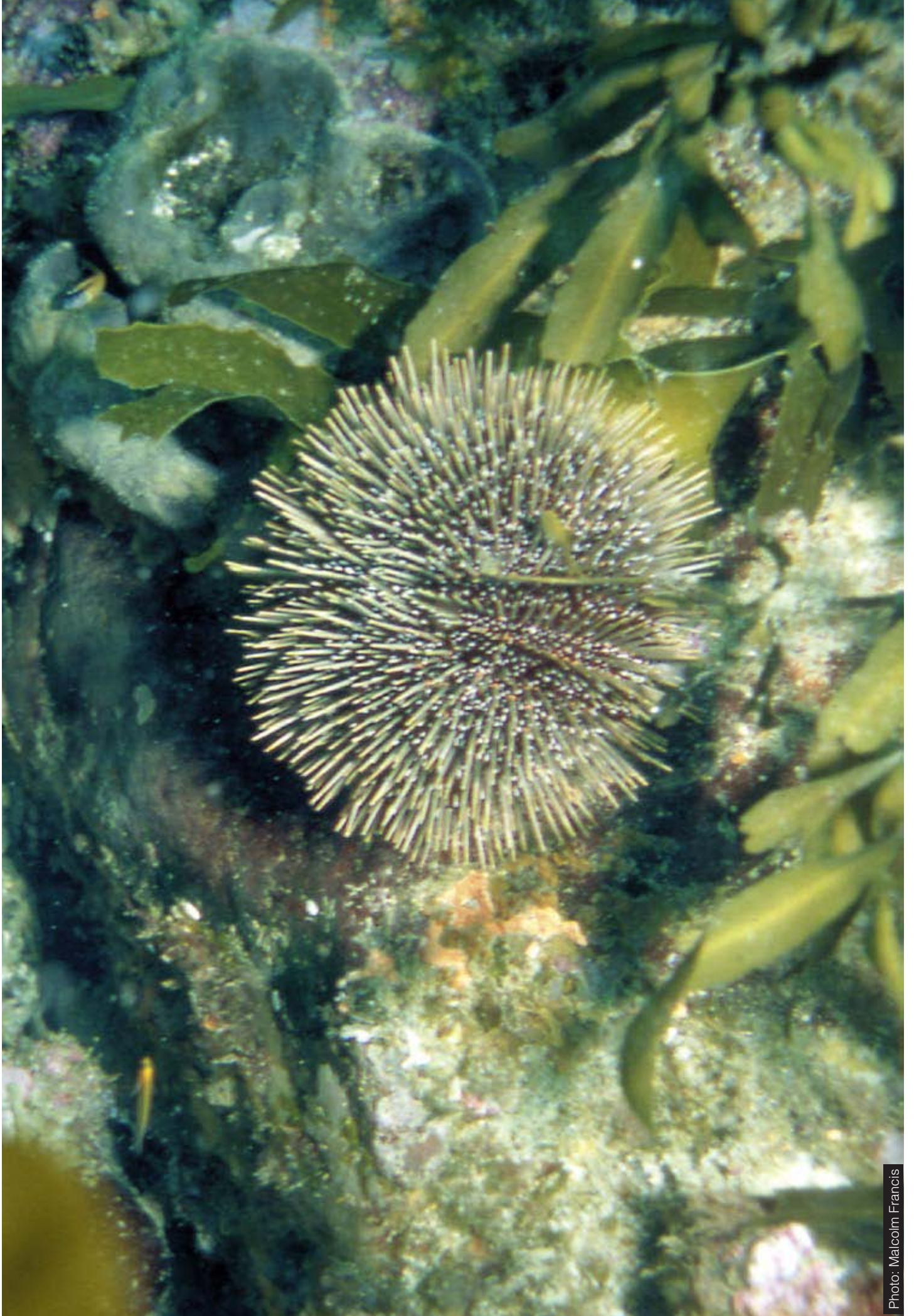


Photo: Malcolm Francis