



Bay of Plenty Conservancy

Draft Conservation Management Strategy

2008 - 2018



Department of Conservation
Te Papa Atawhai

Published by
Department of Conservation
Te Papa Atawhai
Bay of Plenty
PO Box 1146
Rotorua 3040

10 March 2008

Text: The team of Bay of Plenty Conservancy 2007-2008 and the Bay of Plenty Conservation Board

Photos: Various

Cover Photo: Rotomahana with Mount Tarawera in the background. Photo: DOC

Photos in document by DOC staff.

© Copyright 2008, New Zealand Department of Conservation

ISBN 978-0-478-14368-3

In the interest of forest conservation, DOC Science Publishing supports paperless electronic publishing.
When printing, recycled paper is used wherever possible.

CONTENTS

Foreword	5
Structure of the Conservation Management Strategy	6
Introduction	9
Part One Management Objectives and Policies	11
1.1 Treaty of Waitangi responsibilities	11
1.2 Public participation in conservation management	12
1.3 Conservation of natural resources	13
1.3.1 Terrestrial and freshwater ecosystems, habitats and species	13
1.3.2 Biosecurity and management of threats to indigenous ecosystems, habitats and species	22
1.3.3 Fire management	24
1.3.4 Marine ecosystems, habitats and species	25
1.3.5 Geological features, landforms and landscapes	28
1.3.6 Ecosystem services	30
1.4 Historical and cultural heritage	31
1.5 People's benefit and enjoyment	33
1.5.1 Planning and management for people's benefit and enjoyment	33
1.5.2 Vehicles (including aircraft)	35
1.5.3 Dogs	36
1.5.4 Animals (including pets)	37
1.5.5 Marine mammal viewing	38
1.6 Private accommodation	38
1.7 Activities requiring specific authorisation	39
1.7.1 Concessions	39
1.7.2 Sand and shingle extraction	40
1.7.3 Commercial eeling	41
Part Two Places	43
2.1 Whirinaki	45
2.2 Kaimai-Mamaku Forest Park	53
2.3 Freshwater wetlands	61
2.4 Islands	69
2.5 Marine reserves	77
2.6 Volcanic and geothermal environments	83
Part Three Implementation, Monitoring, Reporting, Review and Milestones	91

Part Four	Appendix	99
Part Five	Glossary	101
Part Six	Index	113
Maps		
	Bay of Plenty Conservancy	8
	Whirinaki Forest Park	44
	Kaimai-Mamaku Forest Park	52
	Freshwater Wetlands	60
	Islands	68
	Marine Reserves	76
	Volcanic and Geothermal Environments	82

Foreword

Thrust from the floor of a primordial ocean, the Bay of Plenty Conservancy spans the ‘line of fire’ from beyond Whakaari (White Island) to the central North Island volcanoes. It is a landscape moulded by volcano and earthquake, and blessed by a gentle climate and warm coastal currents.

Once this was Gondwanaland, but today the impacts of human activity have left only fragments, which continue to be threatened by pest animals and plant pests and the pressures of a rapidly increasing population.

Securing these taonga of our ancient heritage is a challenge beyond the ability of any one person, agency or community. All New Zealanders need to embrace conservation as a vital component of creating a sustainable social and economic future and a healthy community.

Successful conservation here will come from us all working together, sharing the skills and wisdom we can each contribute as tangata whenua, public servants, communities, businesses or simply citizens of the region.

The land we administer is highly valued, not only for its ecological significance, but also for cultural, economic, recreation and tourism reasons. This strategy describes how we can recognise these sometimes competing values and achieve integrated conservation outcomes that acknowledge the relationships between people and place. As such it sets management objectives that will remain relevant for the next 10 years.

We see the conservation management strategy as a ‘handshake with the community’ - a document that reflects the input and aspirations of the wider community and charts our course to significantly advance conservation in the Bay of Plenty.

E raka te mauī, e raka te katau

(A community can use all the skills of its people)

Henry Weston

Conservator

Bay of Plenty Conservancy

STRUCTURE OF THE CONSERVATION MANAGEMENT STRATEGY

The conservation management strategy describes the conservation values present in Bay of Plenty Conservancy, provides context for the Department of Conservation's work, and outlines the rationale behind the outcomes, objectives and policies provided for the conservancy.

The strategy includes two volumes. In this volume:

Part One contains management objectives and policies which apply to the whole area covered by the conservation management strategy.

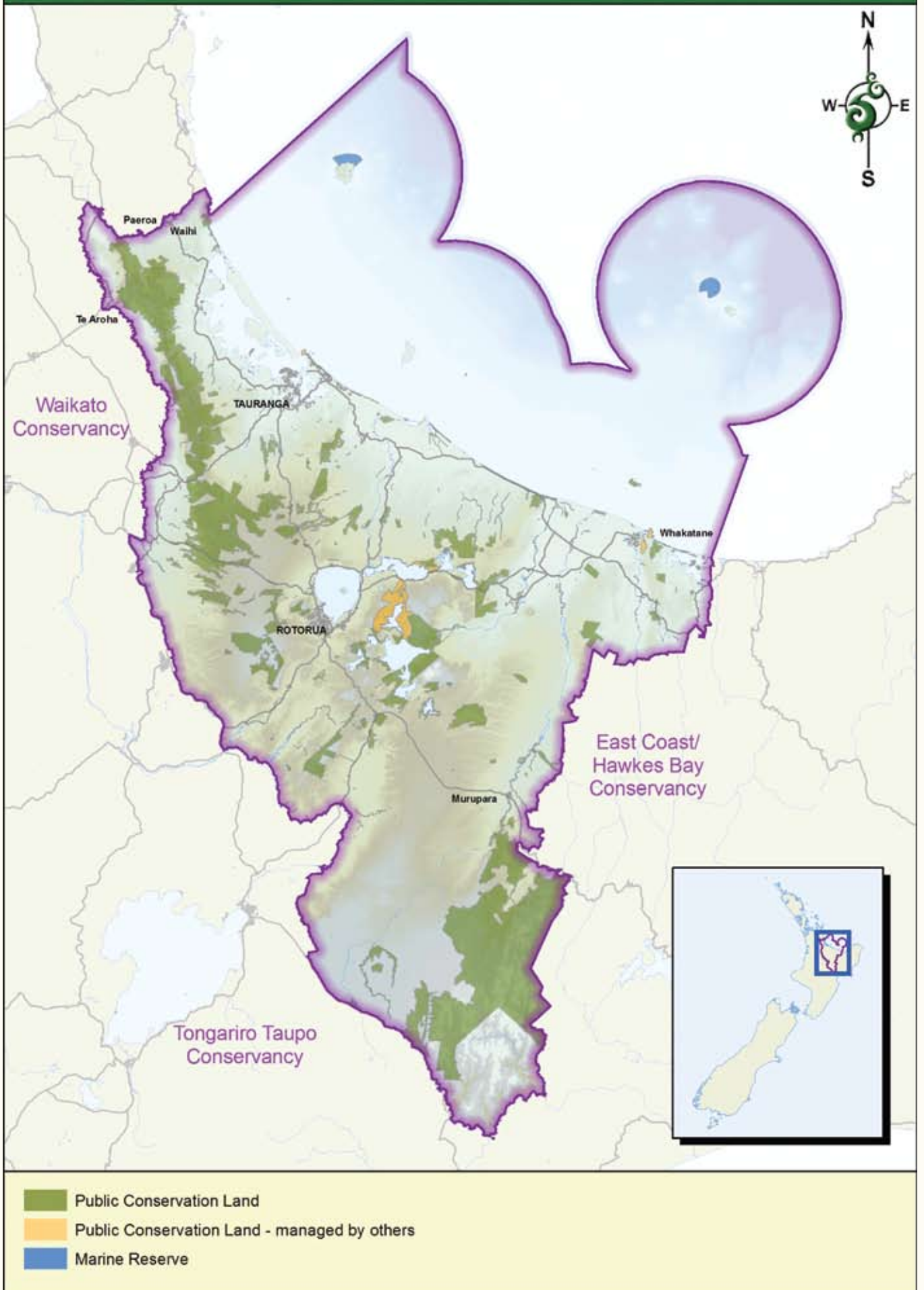
Part Two contains specific provisions for identified 'places'. The provisions include outcomes, objectives and policies which apply only to the specified places. Not all of the conservancy is addressed as discrete places.

Part Three contains information on implementation, monitoring, reporting and milestones.

Parts Four, Five and Six contain the appendices, glossary and index.



Bay of Plenty Conservancy



INTRODUCTION

The purpose of a conservation management strategy (CMS) is to implement general policies, including Conservation General Policy 2005. Conservation General Policy 2005 applies to all lands, waters and resources administered by the Department of Conservation (excluding national parks) and should be read in conjunction with this conservation management strategy.

All public conservation lands and waters must be managed in accordance with the legislation under which they are held. All operative provisions of this conservation management strategy must be interpreted and applied in line with that legislation: the strategy cannot be considered in isolation from that legislation.

The conservation management strategy establishes objectives for the integrated management of natural and historic resources, recreation, tourism and other conservation purposes (section 17D, Conservation Act 1987). The strategy is a key conservation management tool, a conduit through which the department implements legal, policy and strategic goals.

Each conservation management strategy is prepared with public participation.

The term of the Bay of Plenty Conservation Management Strategy is from July 2008 to June 2018.

The Bay of Plenty Conservation Management Strategy has statutory recognition under the Resource Management Act 1991. Its content is considered when plans are developed under that Act.

