

Why we have marine reserves

In the same way that national parks protect species and habitats on land, marine reserves protect representative coastal and marine species and habitats. As these are 'no take' areas, plant and animal communities flourish—precious taonga protected now and in the future for all to enjoy.

Te Paepae o Aotea is a small but important piece in a network of marine reserves. It is part of a national goal of having 10 per cent of New Zealand's marine environment being protected by 2010.

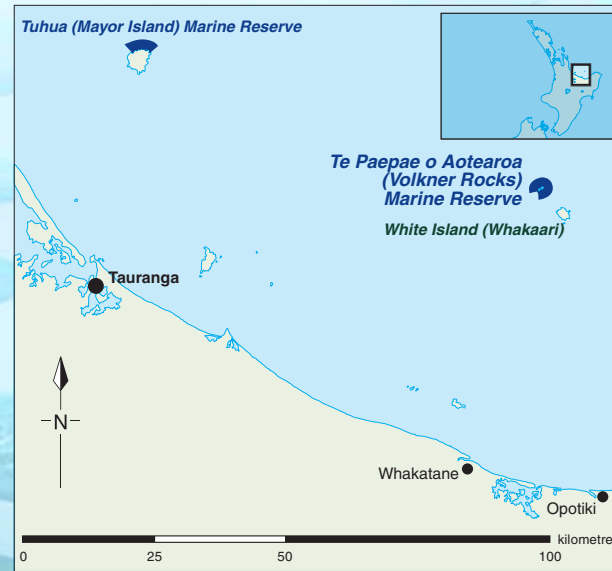
Looking after the marine reserve

The Department of Conservation, Rangitaiki Area Office manages Te Paepae o Aotea (Volkner Rocks) Marine Reserve.

To uphold the values of the marine reserve surveillance and enforcement is undertaken by the Department with the assistance of others. Failure to comply with the Marine Reserves Act, 1971 may result in prosecution.

How to get there

Te Paepae o Aotea (Volkner Rocks) Marine Reserve is located 55 km offshore from Whakatane.



For many people the most convenient and ready access to the marine reserve may be by charter boat. Diving or sightseeing excursions can be arranged through a number of operators.

Further information

Contact the Department of Conservation, Visitor Centre, Main Road, Murupara
Tel: 07 3661080.

If you think there is a safety hazard in a conservation area, call DOC HOTline or the nearest DOC office.

DOC HOTline
0800 362 468
Report any safety hazards or conservation emergencies
For fire and search and rescue call 111

For further information about recreation activities and conservation visit: www.doc.govt.nz

Published by
Department of Conservation
Rangitaiki Area.
P.O. Box 114, Murupara 3062
2006.

Te Paepae o Aotea (Volkner Rocks) Marine Reserve



OCTOBER 2006



Department of Conservation
Te Papa Atawhai

Te Paepae o Aotea (Volkner Rocks) Marine Reserve

Te Paepae o Aotea (Volkner Rocks) Marine Reserve was established in October 2006, and is 55 km off shore from Whakatane. The 1267-ha reserve possesses outstanding natural and ecological features of international significance.



Why this area is important

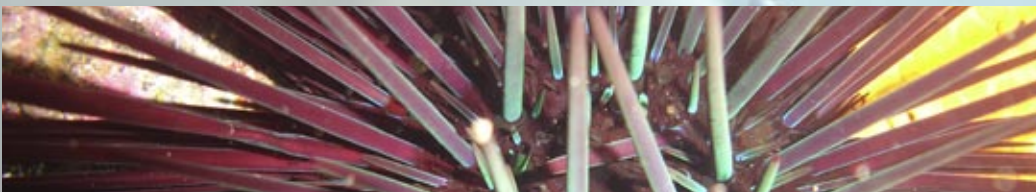
The protruding rock pinnacles that the reserve is often identified with, rise from the sea floor 400m below and create a wide range of habitats. The area is affected by oceanic, deepwater influences. It lies in the path of the warm east Auckland current that sweeps down



from subtropical regions north of New Zealand. This unique combination with clear water supports a wide range of marine diversity which includes the rare fire brick starfish, diadema urchin, Spanish lobster and packhorse crayfish.

A significant place for tangata whenua

Te Paepae o Aotea is a place of great significance to Ngati Awa and other iwi of the Mataatua waka. It is the departure place for the spirits of all people from Mataatua iwi. Spirits linger here, leaving the physical world and reuniting with the souls of the departed. A long time ago Polynesian travellers used this landmark as a guide and knew the land they sought was close. Te Paepae o Aotea is an important part of local heritage.



- Find out first
 - Take care of your gear
 - Remove rubbish
 - Dispose of toilet waste properly
 - Be careful with chemicals
 - Respect our cultural heritage
 - Consider plants and animals
 - Consider other people
- Toitu te marae a tane*
Toitu te marae a tangaroa

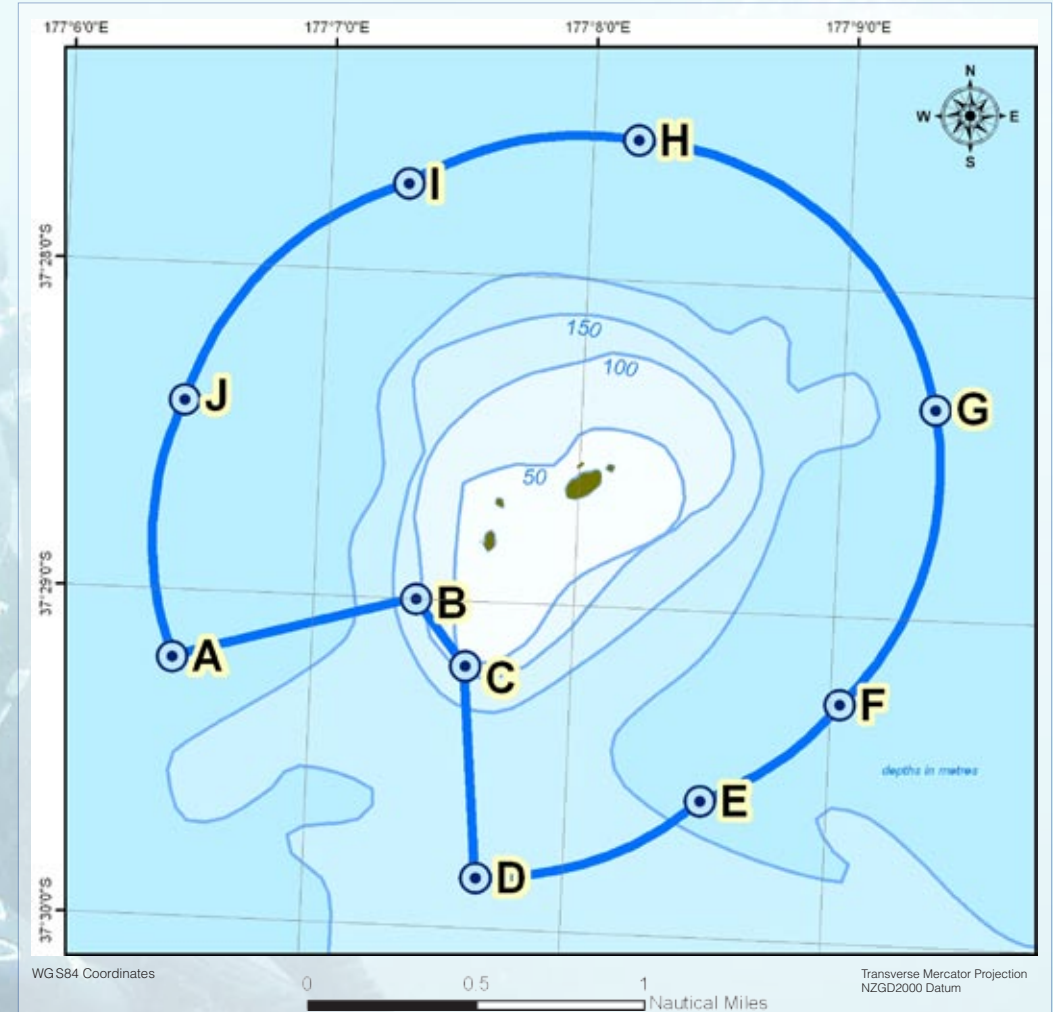
In the marine reserve, you are invited to enjoy diving and snorkeling, swimming, sailing, and power boating. You are entitled to anchor your boat within the reserve.



The following restrictions apply: no fishing, netting or taking of marine life.



Te Paepae o Aotea (Volkner Rocks) Marine Reserve



Established boundary coordinates

POINT	LATITUDE	LONGITUDE	POINT	LATITUDE	LONGITUDE
A	37 29.208 S	177 06.475 E	F	37 29.268 S	177 09.045 E
B	37 29.000 S	177 07.400 E	G	37 28.356 S	177 09.362 E
C	37 29.200 S	177 07.600 E	H	37 27.568 S	177 08.180 E
D	37 29.845 S	177 07.675 E	I	37 27.732 S	177 07.305 E
E	37 29.580 S	177 08.524 E	J	37 28.420 S	177 06.480 E

This map is for informational purposes and may not have been prepared for, or be suitable for legal, engineering or surveying purposes. Users of this information should review or consult the primary data and information sources to ascertain the usability of the information.