

Annual Report of the

# Canterbury Aoraki Conservation Board

Te Rūnanga Papa Atawhai o Waitaha me Aoraki

FOR THE PERIOD 1 JULY 2021 TO 30 JUNE 2022



# Canterbury Aoraki Conservation Board

## Te Rūnanga Papa Atawhai o Waitaha me Aoraki

For the period 1 July 2021 to 30 June 2022

*Presented to the New Zealand Conservation Authority  
Pursuant to Section 6 (O) of the Conservation Act 1987*

Photograph Front Cover:  
Koru (*Image: M-L Grandiek*)

*Published by:*  
Canterbury Aoraki Conservation Board  
c/- Department of Conservation  
Private Bag 4715  
Christchurch Mail Centre  
CHRISTCHURCH 8140  
canterburyaorakiboard@doc.govt.nz

ISSN 1179-2469 (print)  
DOC-7029391

## CONTENTS

<b>1.</b>	<b>Chairperson's report</b>
<b>2.</b>	<b>Introduction</b>
<b>3.</b>	<b>Conservation board region</b> 3.1 Conservation features of the area
<b>4.</b>	<b>Board functioning</b> 4.1 Board functions under Section 6M of the Conservation Act 1987 4.2 Powers of the Board under Section 6N of the Conservation Act 1987 4.3 Board functions under Section 30 of the National Parks Act 1980 4.4 Board memberships 4.5 Members profiles 4.6 Board meetings 4.7 Attendance 4.8 Field trips and site inspections 4.9 Workshops 4.10 Board committees 4.11 Department involvement in Board meetings 4.12 Special events 4.13 Annual Work Plan
<b>5.</b>	<b>Statutory activity</b> 5.1 Canterbury (Waitaha) 2016 Conservation Management Strategy (CMS) 5.2 Management Plans
<b>6.</b>	<b>Advice and advocacy</b> 6.1 Other Conservation Boards liaison 6.2 New Zealand Conservation Authority liaison 6.3 Department of Conservation advice 6.4 Community advocacy and involvement 6.5 Community visibility 6.6 Sustainability
<b>7.</b>	<b>Appendix I – Annual Work Plan 2021/2022</b>
<b>8.</b>	<b>Appendix II – Minister of Conservation Letter of Expectation</b>

## 1. Chairperson's Report

### Eila (Isla) Gendig

Kia ora koutou

Trying to summarise the past 12 months, since July 2021, could easily turn into a novel - there are a myriad of topics and projects which the Canterbury Aoraki Conservation Board Te Rūnanga Papa Atawhai o Waitaha me Aoraki (CACB), has led, provided input into, been consulted on or otherwise been in touch with. Definitely too many to list them all.



But first of all, I would like to thank all the very engaged, smart, dedicated, very knowledgeable, passionate, and overall fabulous people, which the Board has met along the way, our Board members themselves, as well as Department of Conservation (DOC) staff. All this work would not have been possible without you! Similarly, I would like to recognise and sincerely thank two valued Board members whose term on the board has finished this year.

Thank you, Paula Smith, for your 6 years on the CACB, the last 2 years as Chair of the Board. Your time, wisdom, valuable opinions, insights into dryland ecosystems, botany, processes for protecting valuable ecosystems, local history and culture and overall tremendous efforts to improve conservation in the Canterbury Aoraki rohe will be sorely missed.

And thank you, Moana Robb, for your effort and insights into hunting and browsing pressures and being a strong advocate in this space.

The region also farewelled DOC's Eastern South Island Operations Director, Nicola Toki, who moved on to Forest & Bird. Jo Macpherson has recently stepped into this role. Welcome to the Eastern South Island, Jo.

#### **GRAZING ON PUBLIC CONSERVATION LAND (PCL)**

Especially on the Canterbury Plains, grazed and irrigated paddocks are a very common sight. It is astounding to see the overall number of parcels of land leased for grazing in the CACB's rohe. In many instances, the public cannot identify these plots of land as PCL, the PCL boundaries are not aligned with paddock fencing, infrastructure on the land (e.g., irrigation) and grazing have, over time, decimated the block's natural values, with only a lonely cabbage tree (or less) remaining in a sea of perennial grasses and clover.

Hence, this has been a long-standing concern for the CACB, and in the past year, the Board has continued to advocate for more recognition of conservation values in the management (including issuing leases and permissions to graze) of these areas, including working towards reinstating improved conservation where they had and have been degraded.

It is heartening to see progress on this kaupapa in that there is acknowledgement of this being an issue and that this will bring about difficult conversations, as well as immediate measures being implemented to drastically reduce the timeframes for some of these leases.

## **IRRIGATION AND WATER PRESSURES ON REMNANT DRYLAND ECOSYSTEMS**

When some Board members went on an excursion to investigate the area for a permissions application, the impact of irrigation and irrigation overspray on remnant dryland ecosystems was very apparent when driving past Medbury Scientific Reserve. Flat, free-draining land on the Canterbury plains has mostly been modified to pasture. Only few remnant patches with indigenous dryland ecosystem vegetation - old-growth kanuka trees, moss fields and associated vegetation - remain. These remaining areas are all bordering on pastureland and are threatened by irrigation and associated edge effects.

At Medbury Scientific Reserve, the impact of irrigation overspray from neighbouring land uses has already altered the vegetation communities, with dense exotic grasses prevailing at the reserve's edges. Considering the level of loss on this ecosystem type (and hence high ecological value of what remains), the Board is interested in addressing and mitigating these impacts on DOC dryland reserves. Noting that this is an issue that sits outside the scope of DOC, the Board has written to the Regional Council (ECan) on this specific issue and will continue to address it to seek a resolution that has positive conservation outcomes.

## **PERMISSIONS/CONCESSIONS**

It has been an interesting process in the past year, seeing the extent of applications for concessions by external stakeholders - permissions have covered a wide range: from extension of guided tours to proposals of new accommodation on PCL to disturbance and potential threat to threatened species. It is clear to the Board, that our role in the process is to provide the general public's opinion to the decision-makers. As such, the Board has had insightful discussions between its members and provided a CACB view to departmental decision-makers.

## **AORAKI/MT COOK NATIONAL PARK MANAGEMENT PLAN REVIEW**

What a mouth-full of a name.... I would like to acknowledge the hard and tedious work that DOC staff have put into the re-development and review of the Aoraki/Mt Cook National Park Management Plan (APNPMP), and that progressing the review was not an easy task (for a multitude of reasons) in the past 12 months. The Board is hopeful that the inclusion of planners from Ngāi Tahu on the review project team will provide an avenue for integration of a cultural perspective on all aspects of management for the overall National Park.

DOC have provided the Board with progress update meetings on individual chapters (e.g., White Horse Hill campground) of the APNPMP. And from my perspective, Board members have provided a broad spectrum of ideas, suggestions, questions, concerns, and overall community input for consideration in the review in these sessions. It may have looked like a slow and at times frustrating process for all involved. Not least so, because technology, COVID, domestic and international tourism, etc. are changing drastically and progressing at a rapid pace and there is a real need to develop a plan that will be fit for purpose for the future, is inclusive of tāngata whenua needs and enables cultural practices, is easy to understand for all stakeholders, and most importantly provides direction to maintain - if not improve - conservation outcomes in the park. These are difficult requirements to satisfy.

Going forward, the Board is aware that it needs to develop an understanding of its own goals and ambitions for the park to be able to support DOC in developing meaningful milestones. Similarly, the Board is very keen to continue to work with and support the planning team on any upcoming complex, yet critical, topics (e.g., aviation) in the plan itself, to hear how the planning team will bridge the existing gap and misalignment between funding for conservation work and plan outcomes and to finally see the plan come together as one integrated and logical document in the near future.

## **AWARDS**

In October 2021, the Board and guests had a fantastic evening at the Board's annual Conservation Awards Celebration. The Board had received close to 20 applications for the awards. Applicants ranged from primary schools to trusts working on conservation issues and covered a wide range of really awesome conservation work: planting of indigenous vegetation, establishing nursery activities, predator control, track building, fantastic education, and school engagement projects. It was difficult to determine overall winners from this group of exceptional conservation projects. Thank you to the sponsors of the Awards for enabling this opportunity to shine a light on voluntary conservation work all across the CACB's rohe. And thank you to those Board members, who spent many, many hours on planning this event. It was a well organised celebration of conservation efforts because of your extraordinary organisation skills!

## **COMMUNITY ENGAGEMENT**

### **ARTHUR'S PASS VISITOR CENTRE**

It has been extremely valuable to invite the public to Board meetings and hear about the issues and concerns they have in relation to management of PCL, conservation, and recreation. One of the topics that was brought to the Board (by members of the public) is the uncertainty around the Arthur's Pass National Park Visitor Centre.

For years, the Visitor Centre has been off-site, operating out of a container, located at the end of the public car park. That this scenario is not ideal - especially for such a prominent location such as Arthur's Pass, is evident. And that locals are seeking another solution, and confirmation on next steps, is understandable.

### **KAITUNA VALLEY STOCKHOLDING**

Similarly, opportunities for engagement with the public came about on our field trips, such as to Te Waihora/Lake Ellesmere and Kaitorete Spit. On this occasion, the Board was approached by a member of the public, who had concerns about a proposal for development of large-scale stockholding areas in Kaituna Valley, which would have negative impacts on water quality in the valley itself, as well as further downstream (i.e., Te Waihora/Lake Ellesmere).

With the lake already severely impacted by sedimentation and hyper-trophication, this proposed development is in no way facilitating improvements to water quality. The Board is conscious about the flow-on impacts on recreation, cultural harvesting, (threatened) species and ecosystem health. Yet, this kaupapa seems to be outside the scope for this Board. But we will continue to keep an eye on it and raise it with relevant stakeholders should a chance arise for this.

## **FIELD TRIPS**

The CACB is often aligning field trips and its Board meetings, as these provide a great opportunity to understand local issues, hear from local DOC staff and members of the public, and get a sense of the diversity of PCL, DOC's work, and conservation values across the Board's rohe.

In the past year, several field trips were cancelled due to COVID implications. However, the Board visited the following localities:

- Rangitata and Geraldine (August 2021)  
Understanding *Jobs for Nature (J4N)* work, especially re-vegetation efforts along the Rangitata.  
Exploring "Local Treasure" PCL when visiting Kakahu Bush and the nearby historic limestone kilns.

- Te Waihora/Lake Ellesmere and Kaitorete Spit (October 2021)  
Meeting local farmers and their efforts to improve road-side drains as a win-win for farmers and conservation, as less \$ input is needed for maintenance, and tuna and koura are starting to thrive.  
Willow control and re-vegetation at the southern end of Te Waihora/Lake Ellesmere through J4N.  
Chat with coordinators of the Pest-free Banks Peninsula project and understanding the social licence to operate on private lands.  
Impacts of climate change and, unfortunately, also moronic human behaviors, on sand dune ecosystems, esp. habitat for Katipō spiders.  
Introduction to a novel way of collaborating between the Crown and Iwi to establish an innovative, cutting-edge technology venture.
- Kaikoura (cancelled) (December 2021)
- Twizel and Mackenzie Basin (cancelled) (February 2022)
- Banks Peninsula, Wairewa Marae and Akaroa (June 2022)  
Culturally appropriate introduction to the Peninsula, by starting the field trip with a powhiri at Wairewa Marae. A sincere thanks for the support that we received from Wairewa Rūnanga and tāngata whenua of Ngāti Irakehu. And thank you to our Board member Puawai Swindells-Wallace, for ensuring we stop at the marae and for coordinating with the appropriate kaumatua beforehand.  
Introduction to goat eradication across a range of land tenures on the Peninsula.  
Importance of ensuring the buy-in from locals and having to earn the “social licence” to achieve conservation outcomes in a landscape where PCL is not dominant - but highly valuable.  
Strategic measures and adoption of technology for compliance monitoring of marine reserves (no take zones).

Overall, the Board’s activities over the past year have been shaped by interruptions due to COVID, cancelled field trips and last minute re-scheduled accommodation. And I would like to acknowledge the level-headedness and organisational power of the Board Support Officer and Statutory Manager who have excelled in answering questions, resolving concerns, and gathered further information, and perfectly coordinated the Board’s activities. Thank you, Marie-Louise Grandiek, Janine Sidery and Lionel Solly.

I hope that the Board’s activities in the coming year will be more according to plan and that the Board and the Department can leverage their relationship to make big steps forward on conservation priorities in the Canterbury Aoraki rohe.

Nāku noa, nā  
Isla



Date: 4 August 2022



## 2. Introduction

This is the 24<sup>th</sup> Canterbury Aoraki Conservation Board Annual Report. Section 6(O) of the Conservation Act requires Conservation Boards to provide the New Zealand Conservation Authority (the Authority) with an annual report as soon as practical after 30 June each year. In recognition of this requirement, the Canterbury Aoraki Conservation Board submits this annual report.

Conservation Boards are appointed by the Minister of Conservation under Section 6(P) of the Conservation Act 1987. Board functions are outlined in Section 6(M) and the powers, which enable the Conservation Boards to carry out these functions, are under Section 6(N) of the Act.

Conservation Boards are independent advisory bodies, established by statute. They represent the community and offer interaction between communities and the Department of Conservation (the Department), within their area of jurisdiction.

Conservation Boards have several statutory roles under various Acts including:

- the recommendation of the Canterbury (Waitaha) Conservation Management Strategy (CMS) to the Authority for approval
- advising the Department and the Authority on how conservation management strategies and plans will be put into practice
- reporting on the implementation of the CMS
- the approval of conservation management plans
- the recommendation of national park management plans to the Authority for approval
- advising the Department and the Authority on conservation matters, and proposed changes to status of land of national and international significance
- liaising with the regional Fish & Game Council on conservation matters
- carrying out other powers delegated by the Minister of Conservation, the Conservation Act, or any other Act.

Conservation Boards also have several functions under Section 30 of the National Parks Act 1980. These functions include recommending the review or amendment of national park management plans and recommending approval of these plans by the Authority.



### 3. Conservation Board region

The Canterbury Aoraki Conservation Board's area of jurisdiction covers the area of 5,201,723.07 hectares.

The jurisdiction extends from the Conway and Clarence Rivers in the north and west to the main divide, including all of Arthur's Pass and Aoraki Mount Cook National Parks. The southern boundary is the catchment of the Waitaki River at Kurow, along the river to the east coast. The area also extends out to the 12-nautical mile limit with respect to coastal and marine issues, and out to the 200-nautical mile limit with respect to protected species.

Approximately 14.6% of New Zealand's public conservation land and area lie within Canterbury Aoraki's jurisdiction.

Public conservation land and areas make up 40.48% of all land in Canterbury Aoraki. This consists of:

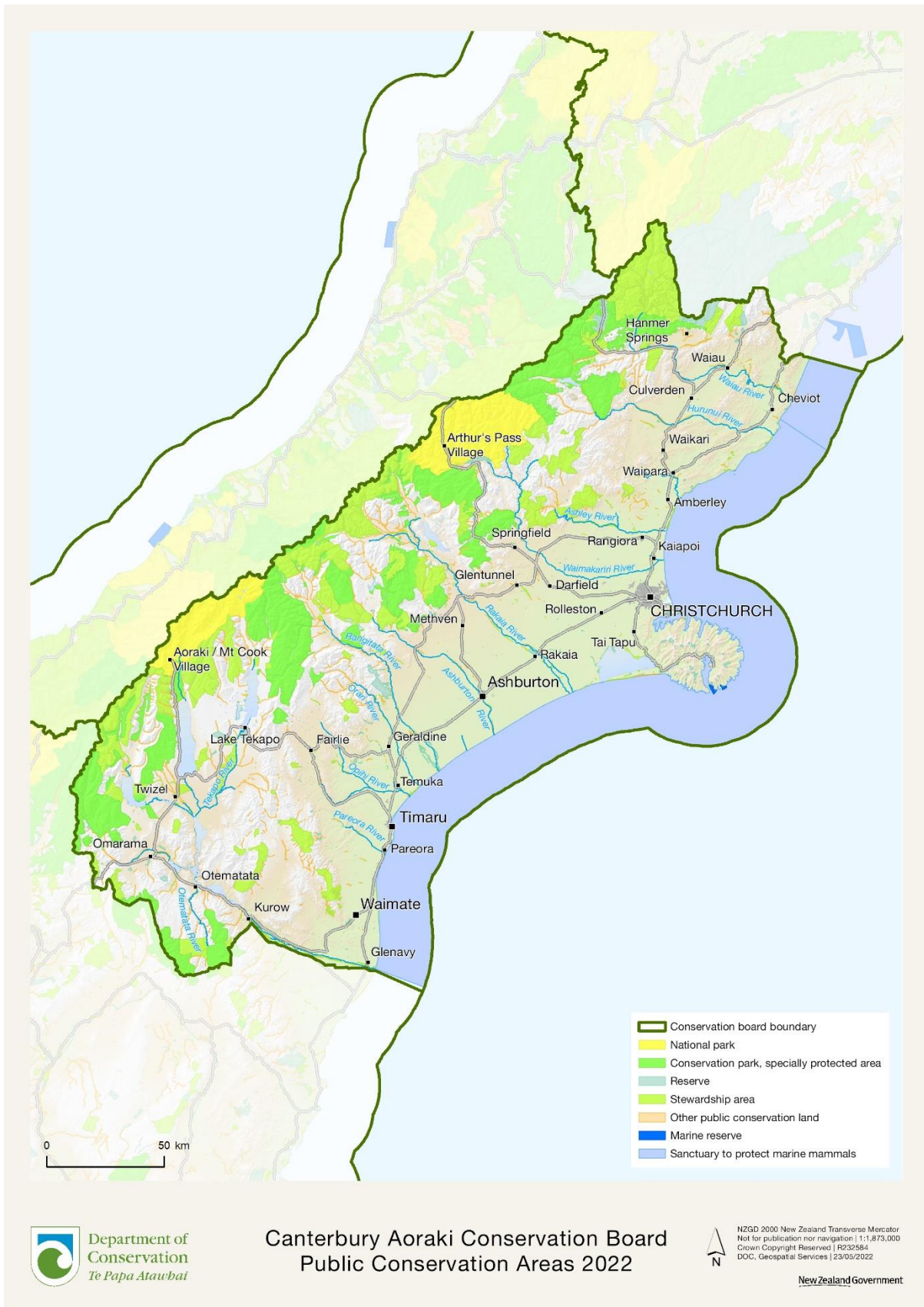
- 1,153,494.95 hectares of Public Conservation Land
- 951,420.13 hectares of Sanctuaries to Protect Marine Mammals
- 746.35 hectares of Marine Reserves

#### 3.1 Conservation features of the area

The main features of Public Conservation Land and Waters within the Board's boundaries are:

- Arthur's Pass National Park – 118,522.21 ha
- Aoraki/Mount Cook National Park – 72,147.90 ha
- Nelson Lakes National Park – 6.53 ha
- Ahuriri Conservation Park – 47,887.36 ha
- Craigieburn Forest Park – 44,683.03 ha
- Hakatere Conservation Park – 59,582.41 ha
- Hanmer Forest Park – 11,777.03 ha
- Hawea Conservation Park – 1,704.99 ha
- Ka Whata Tu o Rakihouia Conservation Park – 41.84 ha
- Korowai/Torlesse Tussocklands Park – 23,991.15 ha
- Lake Sumner (Hoka Kura) Forest Park – 105,029.06 ha
- Oteake Conservation Park – 33,757.70 ha
- Ruataniwha Conservation Park – 37,094.69 ha
- Te Kahui Kaupeka Conservation Park – 93,081.71 ha
  
- 105 Scenic Reserves – 22,908.42ha
- 9 Historic Reserves – 21.58 ha
- 36 Recreation Reserves – 5,930.55 ha
- 437 Stewardship Areas – 443,879.82 ha
- 583 Marginal Strips – 9,368.07 ha
- 4 Specially Protected Areas – 6,588.37 ha
- 2 Wilderness Areas – 7,171.25 ha
- 2 Sanctuaries to protect Marine Mammals – 951,420.13 ha
- 2 Marine Reserves - 746.35 ha

Figure 1: Canterbury Aoraki Conservation Board Jurisdiction



## 4. Board functioning

The Canterbury Aoraki Conservation Board has a statutory obligation to fulfil Section 4 of the Conservation Act 1987 viz: *“This Act shall so be interpreted and administered to give effect to the principles of the Treaty of Waitangi”*.

- Section 4 is a powerful and fundamental provision, requiring more than procedural steps and must be considered in light of other extrinsic aids.
- Other statutory objectives must be achieved to the extent they are consistent with Section 4.

### 4.1 Board functions under Section 6M of the Conservation Act 1987

The functions of the Board are:

- 1) To recommend the approval by the Authority of conservation management strategies, and the review and amendment of such strategies, under the relevant enactments
- 2) To approve conservation management plans, and the review and amendment of such plans, under the relevant enactments
- 3) To advise the Authority and the Director-General on the implementation of conservation management strategies and conservation management plans for the area within the jurisdiction of the Board
- 4) To advise the Authority or the Director-General:
  - a) On any proposed change of status or classification of any area of national or international importance; and
  - b) On any other conservation matter relating to any area within the jurisdiction of the Board
- 5) To liaise with any Fish & Game Council on matters within the jurisdiction of the Board
- 6) To exercise such powers and functions as may be delegated to it by the Minister under this Act or any other Act.

### 4.2 Powers of the Board under Section 6N of the Conservation Act 1987

- 1) Every conservation board shall have all such powers as are reasonably necessary or expedient to enable it to carry out its functions.
- 2) Without limiting the generality of subsection (1), each conservation board may:
  - a) Advocate its interests at any public forum or in any statutory planning process; and
  - b) Appoint committees of members and other suitable persons, and delegate to them functions and powers
- 3) The power conferred by subsection (2)(a) shall include the right to appear before courts and tribunals in New Zealand and be heard on matters affecting or relating to the Board’s functions.

### 4.3 Board functions under Section 30 of the National Parks Act 1980

- 1) To recommend management plans, and the review of amendment of such plans, for parks within the jurisdiction of the Board in accordance with Sections 45 to 46
- 2) To consider and determine priorities for the implementation of management plans for national parks
- 3) To make recommendations to the Minister for the appointment of honorary rangers under Section 40

- 4) To review and report to the Director-General or the Authority, as appropriate, on the effectiveness of the administration of the general polices for national parks within the jurisdiction of the Board
- 5) To give advice to the Director-General or the Authority:
  - i. on the interpretation of any management plan for a park; and
  - ii. on any proposal for the addition of land to any national park or the establishment of a new national park; and
  - iii. on any other matter relating to any national park, within the jurisdiction of the Board.

#### 4.4 Board membership

There were 12 Board members for the reporting year appointed by the Minister of Conservation. Eila Gendig was elected Chairperson and Michael McMillan was elected Deputy Chairperson.

The following table lists the members of the Board between 1 July 2021 and 30 June 2022 and their term of office.

*Table 1: Board membership*

Board member	Area	Term Start	Term End
Euan Brook	Christchurch	01/07/20	30/06/23
Jane Demeter	Christchurch	01/07/20	30/06/23
Eila Gendig	Christchurch	01/07/20	30/06/23
Joseph Hullen*	Kaiapoi	01/09/07	30/06/22
Distinguished Professor Philip Hulme	Lincoln	01/07/21	30/06/24
Michael McMillan*	Temuka	01/07/20	30/06/23
Josh Neville	Christchurch	01/07/19	30/06/22
Dr Heather Purdie	Canterbury	01/07/18	30/06/24
Moana Robb	Twizel	01/07/21	30/06/22
Rachel Robilliard*	Cheviot	01/07/19	30/06/22
Paula Smith	Banks Peninsula	01/05/14	20/06/22
Puawai Swindells-Wallace*	Christchurch	01/07/21	30/06/24

\*Te Rūnanga o Ngāi Tahu appointee

#### 4.5 Members profiles

##### Eila (Isla) Gendig (Chairperson)

Isla has been working on environmental and natural resource management topics for most of her career. She has extensive experience with conservation issues and government processes. She has an academic background in molecular biology, natural resources management and soil conservation.

In her spare time, Isla loves to spend time outdoors with her family.

### [Michael McMillan \(Deputy Chairperson\)](#)

Mr McMillan (of Te Rapuwai, Hawea, Waitaha, Ngāti Māmoe, Ngāi Tahu, Ngāti Huirapa and Te Ruahikihiki) is nominated by Te Rūnanga o Ngāi Tahu. He is a cultural consultant with a background in construction.

Michael has knowledge of the RMA, resource consents, conservation legislation, district plan reviews, iwi management plan development, cultural impact assessments, farm auditing and restoration projects. He has excellent communication skills, consulting with both private and government agencies.

### [Euan Brook](#)

Mr Brook holds a BEng (Hons) in Chemical Process Engineering from Canterbury University and is a qualified project manager working for Goodman Fielder Meadow Fresh in Christchurch.

Euan is an outdoor enthusiast, devoting any free time from his young family to backcountry tramping, hunting, diving, and photography. He is currently following a passion and undertaking research on geckos in the central Canterbury High Country.

### [Jane Demeter](#)

Ms Demeter has been involved in resource management in Canterbury at both governance, education, and community representation levels, with a current focus on land and water management. Her experience in offshore healthcare software development has given her a broad business background.

Jane's involvement in community groups currently focuses on environmental awareness, advocacy, education, and predator trapping.

### [Joseph Hullen](#)

Mr Hullen is a nominee of Te Rūnanga o Ngāi Tahu. He has skills in environmental management and advocacy, is a mahinga kai practitioner and provides strong cultural awareness. Joseph is currently employed as a whakapapa researcher for Te Rūnanga o Ngāi Tahu.

### [Distinguished Professor Philip Hulme](#)

Distinguished Professor Hulme is an experienced biosecurity academic. He has served on Biosecurity Advisory Committees for the UK and New Zealand governments, as well as Environment Canterbury.

Philip has an excellent understanding of data and statistics, the ability to make evidence-based decisions, knowledge of the research landscape that supports conservation activities in New Zealand, and a sound understanding of governance best practice.

### [Josh Neville](#)

Mr Neville works in local government as an urban regeneration planner. He holds a Bachelor of Science and Masters' degree in Geography – having completed his thesis on Land Value Taxation. Josh has a strong interest in sustainable management and environmental systems.

### [Dr Heather Purdie](#)

Dr Purdie is an Associate Professor at the University of Canterbury, who specialises in Physical Geography and Glaciology. Heather has 14 years' experience in conducting research into New Zealand glaciers and their response to climate change, and the implications of environmental change to commercial tourism concessions and recreational activities on conservation land. She is a scientific advisor for the DOC Learning Experiences Outside the Classroom (LEOTC) programme at Aoraki Mount Cook.

### [Moana Robb](#)

Ms Robb (of Ngāti Ranginui, Ngāti Awa) is a very keen hunter, as well as an active conservationist who is passionate about the New Zealand environment.

Moana has previously worked for the Department of Conservation in the National Biodiversity team providing knowledge of pest plants and animals and control methods.

### [Rachel Robilliard](#)

Miss Robilliard (of Ngāi Tahu, Ngāi Te Ruahikihiki and Te Taumutu Rūnanga) is nominated by Te Rūnanga o Ngāi Tahu.

Rachel has a legal background with a focus on environmental, planning, and natural resources law. She has experience advising on legal and compliance requirements for a range of environmental and resource management matters. Rachel is also a member of the Kaitiakitanga Portfolio for Te Taumutu Rūnanga.

### [Paula Smith](#)

Ms Smith has extensive governance experience and is a member on several boards and committees. She also has experience in reserve management planning, landscape assessment, design, and planning, and is familiar with RMA and National Parks Act 1980 processes.

Paula holds a Bachelor of Science in Botany and a Post Graduate Diploma in Landscape Architecture.

### [Puawai Swindells-Wallace](#)

Ms Wallace (of Ngā Puhī, Ngāti Whātua ki Kaipara, Waikato-Tainui, Ngāti Kahungunu ki Wairarapa, Waitaha, Kāti Māmoe, and Ngāi Tahu) is nominated by Te Rūnanga o Ngāi Tahu.

Puawai has experience in conservation operations and is an active advocate and member of her hāpu and wider community. She has a high level of cultural awareness and is skilled in networking, advocacy, and bicultural communication.

## **4.6 Board meetings**

The Board held 5 meetings during the reporting period. Venues for the meetings vary each year to ensure a wide coverage and enable members of the public in the district to attend meetings and access the Board.

NB: The Board's meeting of 21 April 2022 was cancelled.



Table II: Board meeting dates and location

Board meeting date	Meeting location
12 August 2021	Timaru
21 October 2021	Rangiora
9 December 2021	Christchurch
10 February 2022	Meeting held via Microsoft Teams
21 April 2022	Christchurch ( <i>Cancelled</i> )
15 June 2022	Christchurch

#### 4.7 Attendance

The table below summarises the number of Board meetings attended by members out of the total number of meetings held during the year. Members attended other meetings and events in their role as Board members, including subcommittee meetings and representative roles.

Table III: Board member attendance

Board member	Board meetings	Field Trips	Workshops
Euan Brook	4/5	1/3	3/4
Jane Demeter	5/5	3/3	4/4
Eila Gendig	4/5	3/3	4/4
Joseph Hullen	3/5	1/2	2/4
Distinguished Professor Philip Hulme	5/5	3/3	3/4
Michael McMillan	4/5	2/3	3/4
Josh Neville	4/5	1/3	4/4
Dr Heather Purdie	5/5	2/3	4/4
*Moana Robb	1/5	1/3	2/4
Rachel Robilliard	5/5	3/3	3/4
Paula Smith	4/5	3/3	3/4
Puawai Swindells-Wallace	5/5	3/3	1/4

\*Resigned from the Board 23 April 2022

#### 4.8 Field trips and site inspections

Field trips are an excellent opportunity for Board members to become more aware of conservation issues within their region.

Table IV: Field trips and site inspections

Field trip date	Field trip destination
11 August 2021	Rangitata / South Canterbury
26 October 2021	Te Waihora/Lake Ellesmere and Kaitōrete
14 June 2022	Akaroa/Banks Peninsula



## Rangitata / South Canterbury

The focus for the field trip was the Department of Conservation's work on the 'Jobs for Nature' project on Ngā Awa – Lower Rangitata Waterway Restoration, and Kakahu Bush tracks, with the associated limestone features and joint management structure between the Department of Conservation and the South Canterbury Conservation Trust.

Issues discussed included:

- Conservation work on the braided fairway, berms next to the main river channels, wetlands, and intensively farmed riparian margins with the lower catchment of the Rangitata River
- Formation of limestone ecosystem in the Geraldine district and significance of Kakahu Bush Reserve, its history and gifting to the Department
- History and ongoing preservation of evidence of early Māori occupation, including rock drawings, shelters, ovens and refuse pits



**McKinnons Creek, Rangitata Island  
(Image: M-L Grandiek)**



**Kakahu Bush tracks – escarpment  
(Image: M-L Grandiek)**

## Te Waihora/Lake Ellesmere and Kaitōrete

The focus for the field trip was an understanding of the Department of Conservations' work on the margins of Te Waihora/Lake Ellesmere, and briefings on the issues arising from the complex natural and social relationships in relation to the area. Stakeholder and partnership briefings were an integral part of the field trip.

The Board discussed:

- Conservation Planting – One Billion Trees Project – Lakeside
- Lower Selwyn Huts – background and context re occupation of the Department of Conservation reserve adjacent to the mouth of the Selwyn River by fishing huts
- Powells Road waterway, Living Water: a partnership with Fonterra
- Kaitōrete: Project Tāwhaki (Aerospace Proposals), Predator Free Banks Peninsula
- Biodiversity: Katipō spide (*Lactrodectus katipo*), banded dotterel/tūturiwhatu and shrubby tororaro (*Muehlenbeckia astonii*).



**Banded dotterel/tūturiwhatu male (*Charadrius bicinctus*) in nest, Kaitōrete  
(Image: Peter Langland)**

#### [Akaroa/Banks Peninsula](#)

The focus for the field trip was to increase understanding of the Department's work in relation to marine compliance, marine monitoring, and marine mammal tourism industry management. In addition, the Board was briefed on the feral goat eradication work being undertaken on Banks Peninsula.



**Okuti Valley, Banks Peninsula  
(Image: L Solly)**

An integral part of the day was a powhiri and hui with Wairewa rūnanga at Wairewa Marae.

The Board discussed:

- Wairewa Marae  
The kōrero provided Board members a greater insight into the whakapapa and local tūpuna, the values and future aspirations of Ngāti Irakehu.
- Okuti Valley and Saddle Hill Scenic Reserve – goat eradication
- Akaroa Harbour and Department of Conservation Akaroa Base  
Long-term effects of tourism on Hector’s dolphins in Akaroa Harbour  
Marine Monitoring and Reporting Framework (MMRF)

## 4.9 Workshops

*Table V: Workshops*

Workshop Date	Focus of Workshop
24 September 2021	Induction/Annual Work Programme
26 November 2021	Aoraki/Mt Cook National Park - Management Plan Review
11 April 2022	Aoraki/Mt Cook National Park - Management Plan Review
3 May 2022	Aoraki/Mt Cook National Park – Management Plan Review CACB Conservation Awards Annual Work Programme Committee membership, workloads, Chairperson succession

## 4.10 Board committees

Configuration and membership of the Board’s committees was reviewed in September 2021.

*Table VI: Committees*

Committee name	Members
Aoraki Mount Cook National Park Management Plan Review	<b>Paula Smith (Chair)</b> Committee of the Whole (excluding members who have a conflict of interest)
Communications, Awards and Community Engagement	<b>Jane Demeter (Chair)</b> Joseph Hullen, Josh Neville, Puawai Swindells-Wallace
Permissions	<b>Eila Gendig (Chair)</b> Jane Demeter, Phil Hulme, Michael McMillan, Heather Purdie, Moana Robb
Iwi	<b>Rachel Robilliard (Chair)</b> Joseph Hullen, Michael McMillan, Puawai Swindells-Wallace
Land and Water	<b>Josh Neville (Chair)</b> Euan Brook, Joseph Hullen, Phil Hulme
CMS Milestones and Monitoring	<b>Josh Neville (Chair)</b> Eila Gendig, Heather Purdie, Rachel Robilliard

*NB: Eila Gendig (Chairperson) is ex-officio member of each Committee*



#### 4.11 Department involvement in Board meetings

Director Operations ESI, Acting Director Operations ESI, Statutory Manager ESI, Acting Statutory Manager ESI, Board Support Officer, Pou Tairangahau and Operations Managers and Acting Operations Managers from North Canterbury, Mahaanui, Geraldine, Twizel and Aoraki Mount Cook attended Board meetings.

Presentations at Board meetings were received from:

- Conservation Law Reform Team  
Targeted amendments to conservation management and processes  
Review of the Wildlife Act 1953

#### 4.12 Special events

##### Annual Conservation Awards Te Waka o Aoraki

The Canterbury Aoraki Conservation Board awards Te Waka o Aoraki annually, to recognise and encourage conservation efforts and achievements in Canterbury. The Canterbury Aoraki Conservation Board awards the 'Te Waka o Aoraki' trophy to a person or group of people who have nominated themselves to be considered for the award. The 2021 Awards were sponsored by The Isaac Wildlife and Conservation Trust. The 2021 winner was Predator Free Port Hills, a backyard and community trapping project which aims to eventually eradicate pest free predators from the Port Hills and Lyttelton Harbour/Whakaraupō areas to support and grow native biodiversity in the urban fringe.

Glentanner Park (Mt Cook) Ltd sponsored the 'Schools Award' for the best school-based conservation project. This was awarded to Hurunui College Nina Valley Restoration, an ongoing high school student project over the last 13 years, installing and maintaining extensive predator trapping lines for pest control in the Nina Valley.



Te Waka o Aoraki Winners 2020  
(Image: J Demeter)

#### 4.13 Annual Work Programme

Please refer to Appendix I for the full Board Annual Work Programme.

### 5. Statutory activity

#### 5.1 Canterbury (Waitaha) 2016 Conservation Management Strategy (CMS)

*Conservation General Policy requires the Department to report, at least annually, on the implementation of the CMS.*

##### Implementation Monitoring

At its bi-monthly meetings the Board received regular operations and planning reports which include information on the wide-ranging work undertaken by Department staff, much of which is consistent with achieving CMS objectives and policies. The Department reported to the Board in October 2021 on the CMS.

NB: The Board noted that the CMS does not contain a 'Canterbury Plains Place' and accordingly, are mindful that numerous sites throughout Canterbury (Waitaha), are not incorporated within the CMS.

#### 5.2 Management Plans

There are two National Parks within the Board's area of jurisdiction. Each National Park has a management plan which is reviewed at 10-year intervals.

##### Arthur's Pass National Park

The Arthur's Pass National Park Management Plan was approved by the New Zealand Conservation Authority in December 2007. It was due for review in 2017, but this has yet to be commenced by the Department. The Department presented an annual report to the Board on the existing Management Plan in October 2021.



**Poulter Valley, Arthur's Pass National Park  
(Image: J Mace)**

### [Aoraki Mount Cook National Park](#)

The process for reviewing the Aoraki/Mt Cook National Park Management Plan was paused while the Department and Ngāi Tahu worked through the wider implications of the Supreme Court's decision on the Ngāi Tai ki Tamaki case. Agreement has now been reached to start a new review of the Management Plan. The Board is currently working in consultation with Ngāi Tahu and the Department on reviewing the Management Plan and drafting a document to ensure the natural, cultural, heritage and recreational values of the National Park are protected for all. The Department presented an annual report to the Board on the existing Management Plan in October 2021.



**Mount Cook daisy (*Celmisia semicordata*) and Aoraki/Mount Cook  
(Image: D Stent, Department of Conservation)**

### [Te Waihora Joint Management Plan/Mahere Tukutahi o Te Waihora](#)

The Te Waihora Joint Management Plan (2005) is the first statutory joint management plan between the Crown and Iwi, and results from the settlement of Ngāi Tahu claims against the Crown and in particular, the loss of access to places where the tribe produced or procured food and other resources.

Reporting on the plan objectives will assist in plan implementation and review and will included annual reporting to the Canterbury Aoraki Conservation Board. However, no annual reporting has been received since the commencement of the Plan. The Board expressed its disappointment that annual reporting on the Plan has not been provided and reminded the Department that this is an annual requirement (*Te Waihora Joint Management Plan: Pg. 171, Part 4: Implementation and Review, 2.2 Reporting*).



## 6. Advocacy

All Board members have responsibility for liaising with other groups when opportunities arise, and some members have specific roles in liaison. The Board appointed various members to liaise with other groups and agencies.

*Table VII: Board Liaisons and Representatives*

Board Member	Group/Agency/Organisation
Moana Robb	Fish & Game Central South Island
Josh Neville/Paula Smith	Fish & Game North Canterbury
Moana Robb	Te Manahuna ki Uta
Dr Heather Purdie	Tahr Interest Group Himalayan Tahr Control Plan Implementation Group
Jane Demeter/Joseph Hullen	Social Media – Facebook and Twitter
Euan Brook	National Wallaby Management Programme

### 6.1 Other Conservation Boards Liaison

The Board's immediate neighbours are the Nelson Marlborough, Otago, and West Coast Tai Poutini Conservation Boards. The Board's respective liaisons monitor the minutes for issues of common interest and report back at each meeting.

### 6.2 New Zealand Conservation Authority Liaison

Tony Lepper is the New Zealand Conservation Authority liaison to the Board.

### 6.3 Department of Conservation Advice

The Board provided advice to the Department on the following issues:

#### Change of Status

The Board has requested that the Department provide an annual update (in May of each year), on the reclassification of stewardship lands. The Board resolved that any new proposed status for stewardship land reclassification should be discussed and agreed in partnership with papatipu rūnaka. In May 2021, the Government announced a two-part project to accelerate and review the reclassification of stewardship land. This work is ongoing.

#### Concessions

Recommendations were made to the Department on several Concessions applications within the following public conservation areas:

- Mt Somers, Hakatere Conservation Park
- Mt Dobson Ski Area, Te Kahui Kaupeka Conservation Park
- Craigieburn Forest Conservation Park
- Conservation Area Ashley/Rakahuri and Hurunui Rivers
- Mt Cheeseman, Southern Conservation Parks
- Kura Tāwhiti Conservation Area
- Hanmer Springs
- Lyttelton/Wharekaupō Harbour
- Aoraki Mount Cook National Park



#### **6.4 Community advocacy and involvement**

The Board believes that working with conservation organisations and members of the public is very important. Meetings were held in different parts of the Canterbury Aoraki region and opportunities for the public to attend Board meetings were advertised. Members of the public attended the Public Forum at several of the year's meetings and a range of issues were raised. The Board appreciates this input from the public.

The Board provided Public Submissions on the following:

- Hurunui District Council: Proposed 2021-2031 Long Term Plan
- Dolphin TMP Team, Fisheries New Zealand, and Ministry for Primary Industries: Fisheries measures to protect Hector's dolphins in the South Island, and wider roll out of on-board cameras
- Department of Conservation: Stewardship land in Aotearoa New Zealand – Options to streamline processes for reclassification and disposal

#### **6.5 Community Visibility**

The Board maintains a presence on the Department's website with updates provided throughout the year on activities undertaken. The Board also maintains a presence on both Twitter and Facebook.

#### **6.6 Sustainability**

To reduce carbon emissions and show leadership in climate change action, the Board adopted a 'Climate-Smart Operating Agreement' in June 2020. By agreeing to follow the nine recommendations, the Board will seek to calculate their carbon emissions with the aim of working towards establishing a means of offsetting these emissions via investment / participation in a local carbon offsetting scheme.



## 7. APPENDIX I – Annual Work Programme 2021/2022



Canterbury Aoraki Conservation Board  
Te Rūnanga Papa Atawhai o Waitaha me Aoraki

# ANNUAL WORK PROGRAMME 2021/2022



*Kākī release – Mt Gerald Station, Lake Takapō*

*(Image: E Gendig)*

## **Canterbury Aoraki Conservation Board/Te Rūnanga Papa Atawhai o Waitaha me Aoraki – Work Programme 2021/2022**

This work programme was developed in October 2021 by Canterbury Aoraki Conservation Board/Te Rūnanga Papa Atawhai o Waitaha me Aoraki (the Board) in response to the Minister of Conservation's annual Letter of Expectation to Conservation Boards, dated 7 October 2021.

It is designed to give effect to Board functions under Section 6M of the Conservation Act 1987 and other statutory requirements of conservation boards.

The Board has a statutory obligation to fulfil Section 4 of the Conservation Act 1987 viz: *"This Act shall so be interpreted and administered as to give effect to the principles of the Treaty of Waitangi"*.

- Section 4 is a powerful and fundamental provision, requiring more than procedural steps and must be considered in light of other extrinsic aids.
- Other statutory objectives must be achieved to the extent they are consistent with Section 4.

### ➤ **Board functions under Section 6M of the Conservation Act 1987**

The functions of the Board are:

- 7) To recommend the approval by the Authority of conservation management strategies, and the review and amendment of such strategies, under the relevant enactments
- 8) To approve conservation management plans, and the review and amendment of such plans, under the relevant enactments
- 9) To advise the Authority and the Director-General on the implementation of conservation management strategies and conservation management plans for the area within the jurisdiction of the Board
- 10) To advise the Authority or the Director-General:
  - c) On any proposed change of status or classification of any area of national or international importance; and
  - d) On any other conservation matter relating to any area within the jurisdiction of the Board
- 11) To liaise with any Fish & Game Council on matters within the jurisdiction of the Board
- 12) To exercise such powers and functions as may be delegated to it by the Minister under this Act or any other Act.

### ➤ **Powers of the Board under Section 6N of the Conservation Act 1987**

- 4) Every conservation board shall have all such powers as are reasonably necessary or expedient to enable it to carry out its functions.
- 5) Without limiting the generality of subsection (1), each conservation board may:
  - c) Advocate its interests at any public forum or in any statutory planning process; and
  - d) Appoint committees of members and other suitable persons, and delegate to them functions and powers
- 6) The power conferred by subsection (2)(a) shall include the right to appear before courts and tribunals in New Zealand and be heard on matters affecting or relating to the Board's functions.

➤ **Board functions under Section 30 of the National Parks Act 1980**

- 6) To recommend management plans, and the review of amendment of such plans, for parks within the jurisdiction of the Board in accordance with Sections 45 to 46
- 7) To consider and determine priorities for the implementation of management plans for national parks
- 8) To make recommendations to the Minister for the appointment of honorary rangers under Section 40
- 9) To review and report to the Director-General or the Authority, as appropriate, on the effectiveness of the administration of the general polices for national parks within the jurisdiction of the Board
- 10) To give advice to the Director-General or the Authority:
  - iv. on the interpretation of any management plan for a park; and
  - v. on any proposal for the addition of land to any national park or the establishment of a new national park; and
  - vi. on any other matter relating to any national park, within the jurisdiction of the Board.

This work programme was reviewed, concluded, and subsequently ratified by the Canterbury Aoraki Conservation Board on 15 June 2022.

**TASK 1:****Monitoring Conservation Management Strategy, Canterbury (Waitaha) 2016**

	Action	Status	Progress Commentary
1.1	The Board will receive an annual report on progress implementing the CMS milestones		CMS Implementation Monitoring Report was received by the Board at the meeting of 21 October 2021.
1.2	Of the CMS milestones at risk of not being achieved or not started within anticipated timeframes, the Board will prioritise ones of most concern and raise these with the Department		CMS Implementation Monitoring Report was received by the Board at the meeting of 21 October 2021.
1.3	The Board will receive regular updates on implementation of the CMS milestone relating to CMS Policies 2.3.6 - 2.3.10. This is in relation to private accommodation and structures at Loch Katrine Recreation Reserve.		Some updates were provided by the Department throughout the year, but this did not provide the Board clarity with how the milestone will be achieved.
1.4	The Board will report on progress on implementation of the CMS to the New Zealand Conservation Authority (NZCA) in its 'end-of-year' report.		Will be completed following the meeting of 15 June 2022
1.5	Board field trips will be planned to relate to CMS milestones of particular interest to the Board.		The Board has completed field trips in relevant areas however some were cancelled due to COVID restrictions.

**TASK 2:****Monitoring implementation of Te Waihora Joint Management Plan 2005**

	Action	Status	Progress Commentary
2.1	The Board will receive an annual monitoring report on implementation of Te Waihora Joint Management Plan 2005.		Update provided on current status. No monitoring report provided.
2.2	The Board will report on progress on the implementation of Te Waihora Joint Management Plan 2005 to the NZCA in its 'end-of-year' report.		The Chairperson will provide comment in her Annual Report.
2.3	The Board will develop an understanding of kaitiaki Rūnanga rights and interests as they relate to the Plan and establish partnership in plan monitoring processes.		A discussion has been had on the most appropriate approach and this will be undertaken next year.

**TASK 3:****Monitoring implementation of Arthur's Pass National Park Management Plan 2007**

	Action	Status	Progress Commentary
3.1	The Board will receive an annual monitoring report on implementation of the Arthur's Pass National Park Management Plan 2007.		Report was received by the Board at the meeting of 21 October 2021.
3.2	The Board will report on progress on the implementation of the Arthur's Pass National Park Management Plan 2007 to the NZCA in its 'end-of-year' report.		Will be completed following the meeting of 15 June 2022.
3.3	The Board will continue to advocate for integrated pest management along the road and rail corridors through Arthur's Pass National Park, and on neighbouring riverbeds.		The Board continues to advocate on this issue. The Board continues to receive on the Upper Waimakariri Integrated Weed Forum.
3.4	The Board notes the age of the Arthur's Pass National Park Management Plan and unlikelihood of a refresh or update in the near future. The Board in lieu of this occurring will raise issues related to the management framework of the Park and may advocate for interim plan changes to occur if necessary.		No recommended plan changes were proposed by the Board. The Board has taken an interest in the proposals within the Conservation Management and Processes Bill. The Board is aware of community issues regards to the future of the Arthur's Pass Visitor Centre.

**TASK 4:****Monitoring implementation of existing Aoraki/Mount Cook National Park Management Plan 2004**

	Action	Status	Progress Commentary
4.1	The Board will receive an annual monitoring report on implementation of the Aoraki/Mount Cook National Park Management Plan 2004.		Report was received by the Board at the meeting of 21 October 2021.
4.2	The Board will report on progress on the implementation of the Aoraki/Mount Cook National Park Management Plan 2004 to the NZCA in its 'end-of-year' report.		Will be completed following the meeting of 15 June 2022
4.3	When considering applications for permissions in Aoraki/Mount Cook National Park, the board will base its advice on the existing plan but will also be mindful of policy emerging with development of the new management plan.		The Board has considered this implication as it pertains to application commentary provided to the Department. The Board comments as appropriate on bi-monthly Permissions Reports.



**TASK 5:****Approval of a new Aoraki/Mount Cook National Park Management Plan**

	Action	Status	Progress Commentary
5.1	The Board will seek to ensure review of the management plan for Aoraki/Mount Cook National Park is progressed effectively. The Board will report on progress to the NZCA at the end of the year.		The Board has continued to participate in workshops to discuss the AMCNP management plan review and has expressed concern relation to the timeframes of the review, whilst noting circumstances. The report will be completed following the meeting of 15 June 2022.
5.2	The Board will seek to ensure review of the management plan for Aoraki/Mount Cook National Park promotes strong conservation outcomes.		Board continuing to advocate for strong conservation outcomes for the National Park.
5.3	The Board will seek to ensure the new management plan is co-designed with kaitiaki rūnaka and the document reflects full partnership with mana whenua, recognising and enabling Ngāi Tahu rights and interests.		The Board continues to advocate for this.
5.4	The Board will seek to ensure the new management plan strengthens climate change mitigation and includes workable adaptation initiatives.		The Board continues to advocate for this.
5.5	The Board will continue to acknowledge and advocate for the right of customary harvest and kaitiakitanga of with kaitiaki rūnaka		The Board continues to advocate for this and received response from Conservation Authority on this matter but will seek opportunities to raise this further.

**TASK 6:****Advocating for Conservation in Canterbury/Waitaha**

	Action	Status	Progress Commentary
6.1	The Board will take opportunities as they arise to make submissions in support of improving conservation outcomes for Canterbury/Waitaha.		The Board has several submissions 21/22.
6.2	The Board will be selective about which issues it submits on, using its particular influence to best advantage for conservation in Canterbury/Waitaha.		Ongoing use of previously agreed principles in place.
6.3	In all submissions, the Board will acknowledge Ngāi Tahu rights and interests.		The Board continues to recognise the need to acknowledge Ngāi Tahu rights and interests in submission making process.
6.4	Particular areas of focus for advocacy by the Board in the year ahead include the declining kea population, management of Bennett's wallabies, game animal management, and braided river management		The Board sought to advocate in these areas where opportunities arose.

6.5	The Board will continue to advocate for ecological survey of marine ecosystems off the coast of Canterbury/Waitaha, and for an integrated system of marine protection which is aligned with customary rights, and which acknowledges currently unrecognised rights.		Further advocacy needs planning. The Board has made submissions on: "Further measures to protect S I Hector's dolphins" document
6.6	The Board will continue to advocate for reclassification of stewardship lands in Canterbury/Waitaha, whilst recognising and enabling Ngāi Tahu rights and interests throughout this process. The Board will receive an annual update on progress from Te Papa Atawhai		The Board expects to contribute to the proposed new reclassification process and submitted on the reclassification consultation.
6.7	The Board will work strategically with other conservation boards and the NZCA where this makes advocacy more effective.		Opportunities are taken when available. A joint meeting with the Nelson Marlborough Conservation Board was cancelled due to COVID-19 protocols and it is hoped to reschedule this in April/May 2023.

#### TASK 7:

#### Providing advice and recommendations to Te Papa Atawhai on selected applications for permissions

	Action	Status	Progress Commentary
7.1	The Board will provide advice and recommendations on selected applications for permissions (concessions) to carry out activities on public conservations lands in Canterbury/Waitaha.		The Board continues to provide advice on permissions as they are received.
7.2	The Board will seek to ensure Te Papa Atawhai processes for the granting of permissions in Canterbury/Waitaha are responsive to kaitiakitanga, Papatipu rūnaka and iwi aspirations.		Ongoing discussions continue between the Board and the Department of Conservation.
7.3	The Board will maintain a 'trigger' list of areas of focus and notify the department of these. The Board will provide advice to the NZCA and Te Papa Atawhai on particular issues related to these.		Ongoing discussions continue between the Board and the Department of Conservation. Our trigger list was updated in 2021 and distributed to relevant Department of Conservation staff.

**TASK 8:****Supporting improvement and further development in the Treaty of Waitangi partnership between Te Papa Atawhai, iwi and Papatipu rūnaka in Canterbury/Waitaha**

	Action	Status	Progress Commentary
8.1	The Board will seek to ensure Te Papa Atawhai processes, including the granting of permissions (concessions), recognise and enable customary rights.		The Board continues to regularly raise this matter with the Department of Conservation and the New Zealand Conservation Authority.
8.2	The 'Iwi Committee' will report regularly to the whole Board.		Iwi Committee made up of the four appointed Ngāi Tahu representatives reports back to CACB regularly.
8.3	Kaitiaki rūnaka will be routinely advised when the Board is meeting in their rohe, and rūnaka members invited to participate in the Board's field trips.		Kaitiaki Rūnaka are routinely advised when the Board is meeting in their rohe. Limited opportunities have been available due to external circumstances for field trips.
8.4	A summary of Board meetings will be routinely provided to Kaitiaki rūnaka		Routinely provided to Papatipu rūnaka.
8.5	At least one CACB meeting a year will be held on a marae in Canterbury/Waitaha.		Scheduled meeting to be held at Arowhenua Marae was cancelled. A hui was undertaken at Wairewa marae, Little River.
8.6	Tikanga and ongoing learning will be incorporated into Board meetings and field trips.		Tikanga and ongoing learning are being incorporated into Board meetings and field trips.
8.7	If the opportunity is available, at least one Board member will attend a Pūkenga Atawhai course during the year.		No Board members have attended a Pūkenga Atawhai course due to cancellation due to COVID-19.

**TASK 9:****Implementation of *Te Mana o Te Taiao Aotearoa* New Zealand Biodiversity Strategy 2020**

	Action	Status	Progress Commentary
9.1	The Board will reflect <i>Te Mana o Te Taiao</i> into advice it provides on implementation and planning.		The Board has made a concerted effort to raise this where appropriate.
9.2	The Board will request appropriate progress reporting and measurement of biodiversity outcomes in line with <i>Te Mana o Te Taiao</i> implementation.		The Board has received correspondence from the Statutory Manager, Department of Conservation to give effect to this action.

**TASK 10:****Advising Te Papa Atawhai on strengthening its climate change mitigation and adaptation initiatives**

	Action	Status	Progress Commentary
10.1	The Board will continue to remind Te Papa Atawhai of the need to monitor future risks, particularly the risk of abandoned ski field infrastructure on public conservation land.		The Board continues to highlight this issue and take this into account when considering concession applications.
10.2	The Board will seek to ensure management planning acknowledges climate change risks, and the need for mitigation and/or resilient adaptation initiatives.		The Board have received advice about the impact of this for the AMCNP management plan review.

**TASK 11:****Engage and connect with local communities on conservation issues**

	Action	Status	Progress Commentary
11.1	All Board members will report regularly on participation in activities and events related to conservation in Canterbury/Waitaha. Interactions with other people and organisations will inform the Board's advice to Te Papa Atawhai.		Liaison reports continue to be supplied at each meeting.
11.2	The Board will continue liaison with North Canterbury and Central South Island Fish and Game Councils.		The Board has established relationships with Fish and Game Councils within their rohe and continue to note items of shared interest.
11.3	A 'Communication and Engagement Committee' will co-ordinate the Boards communications and activities, including a social media presence. Regular reports will be provided to the whole Board.		Reports continue to be supplied at most meetings.
11.4	The CACB Conservation Awards will be made in late 2021		The CACB Conservation Awards were presented at an awards evening on 19 October 2021.

**TASK 12:****Monitoring achievement of CACB Annual Work Programme 2021/2022**

	Action	Status	Progress Commentary
12.2	The Board will assess progress on actions in the Annual Work Programme at its first meeting in 2022 and again at the first meeting to be held after the end of the year in June 2022.		Completed – 15 June 2022



## 8. APPENDIX II – Minister of Conservation Letter of Expectation

### Hon Kiritapu Allan

MP for East Coast  
Minister of Conservation  
Minister for Emergency Management  
Associate Minister for Arts, Culture and Heritage  
Associate Minister for the Environment



Ref: 21-8-0331

Paula Smith

Canterbury Aoraki Conservation Board

[canterburyaorakiboard@doc.govt.nz](mailto:canterburyaorakiboard@doc.govt.nz)

Tena koe Paula

#### **Annual Letter of Expectations - Canterbury Aoraki Conservation Board 2021-22**

I would like to thank you and your board members for your ongoing efforts to serve the Canterbury Aoraki community and for continuing to be local conservation leaders.

The purpose of this letter is to confirm my expectations for your board. These expectations should inform the development of your board's planning process for the year. This letter also sets out a framework for successfully working with the Department of Conservation (the Department).

The basis for my expectations originates in the statutory functions set out in section 6M of the Conservation Act 1987 (the Act), section 30 of the National Parks Act 1980, and the Reserves Act 1977. As reflected in these statutes, the focus of conservation boards is policy issues, strategic direction, and planning, not the day-to-day operations of the Department.

#### **Government and ministerial priorities**

For the 2021-22 year, my priorities for conservation boards are to:

- Support the implementation of Te Mana o te Taiao - The Aotearoa New Zealand Biodiversity Strategy
- Contribute to any reviews of national park management plans and Conservation Management Strategies (CMSs) and support their progress effectively to promote strong conservation outcomes
- Embed the principles of the Treaty of Waitangi in accordance with the obligations of section 4 of the Act in all aspects of work
- Support the transition to a lower-carbon conservation delivery model, having regard to the Climate Change Response (Zero Carbon) Amendment Act 2019

#### **Board-specific priorities**

I have been informed by my officials that your priorities for the 2021-22 year to:

- Complete the Aoraki/Mount Cook National Park Management Plan
- See progress on classifying stewardship land in Canterbury, especially St James

Private Bag 18041, Parliament Buildings, Wellington 6160, New Zealand

+64 4 817 8732 |

k.allan@ministers.govt.nz |

beehive.govt.nz

- See change to grazing concessions to achieve better conservation outcomes for Canterbury
- Improve reporting on implementation of the Canterbury (Waitaha) CMS 2016
- Advocate for indigenous species and ecosystems in Canterbury including marine environments.

I expect these priorities to be reflected in your 2021-22 Strategic Annual Work Plan along with the Department's priorities in the Department's four-year plan<sup>1</sup>, and look forward to seeing the outcomes in your annual report.

### **Resources**

The Department services conservation boards in accordance with section 6V of the Act. This includes providing resources developed by the Department to help boards achieve the highest standards of conservation leadership. These may be published and updated as appropriate at [www.conservationboards.org.nz](http://www.conservationboards.org.nz).

### **Your community**

As board members, you represent the public interest in conservation. It is integral that you are active and visible in your communities, so that you bring a well-informed community voice to the table. New Zealand communities are becoming increasingly engaged with conservation and are increasingly aware of the importance of preserving and protecting our natural environment as guardians for future generations. I expect your board to continue to encourage, nurture and facilitate this interest.

### **Working with the Department of Conservation**

The Department is focused on the delivery of quality conservation work, which aligns with the conservation leadership role you play within your local communities. I expect you to work collaboratively with your Director Operations and Statutory Manager to maintain a strong working relationship with the Department. This relationship is important in providing advice to the Department on conservation matters within your rohe.

I expect you to report on what is working well for you, and areas that require improvement.

### **Working with other conservation boards and the NZCA**

Conservation is a nationwide challenge, and work on conservation matters, management strategies and plans frequently requires working across boundaries with other conservation boards. I encourage you to continue to develop effective ways of working together with other conservation boards to establish a consistent and efficient approach and avoid a duplication of efforts. The New Zealand Conservation Authority (NZCA) is a source of support for conservation boards to draw upon in relation to the national and policy context for conservation issues.

### **No surprises**

I expect to be informed well in advance of any material or significant events relating to the board, whether positive or negative. Examples of matters that could fall within the 'no surprises' policy could include, but are not limited to, imminent media coverage of any activities that could attract critical media comment, or any matters on which I could be asked to express a view.

---

<sup>1</sup> <https://www.doc.govt.nz/about-us/our-role/corporate-publications/four-year-plan/>



## **Understanding conservation boards' legal obligations**

I expect that all conservation board members fully understand their legal obligations under conservation law, including the hierarchy of priorities that should be taken into account when making decisions. Conservation boards' legal obligations are covered in section 5 of the Conservation Board Manual.<sup>2</sup>

## **Planning and reporting**

I expect you, with your Director Operations, would be finalising your work plan in the near future. Your work plan should align with your statutory obligations under the Act, the National Parks Act 1980, and the Reserves Act 1977. I expect that your finalised work plan would include measures and milestones, demonstration of what success will look like for each priority, and how your board will be able to support the Department's stretch goals.

I look forward to receiving a copy of your 2020-21 annual report, through the NZCA in the near future. I'm keen to get a greater understanding of the work in your role and encourage you to also provide me with a brief interim report on your activities mid-year. The Department will provide a template for you to use for this purpose.

I appreciate the effort and commitment of your board to conservation in your community and wish you a successful year.

Naku noa, na



Hon Kiritapu Allan

**Minister of Conservation**

---

<sup>2</sup><https://www.doc.govt.nz/about-us/statutory-and-advisory-bodies/conservation-boards/conservation-board-manual/conservation-board-statutory-functions-and-powers/>

## Annual Calendar of Common Conservation Board Activities 1 July 2021 to 30 June 2022

Timeframe	Event
1 July	New Board member appointment take effect
31 August	Annual report from previous year due with the NZCA
Mid -late September	Minister's letter of Expectation sent to Boards
Mid November	Board chairs send work programme to Minister, via DDG Conservation Partnerships
Early - mid December	Public notices calling for nominations called for next year's appointments (closing date of 28 days from date of first notice)
By mid - February	Departmental recommendations provided to SBU for collation and clearance with DG or delegate
Early May	Minister's proposed Board appointments considered by Appointment and Honours Committee then Cabinet
Mid May	Board appointments made by Minister of Conservation
Late May	Press released issued
Late June	Board pages updated on DOC website



Kaitorete (Image: R George)