



Te Rūnanga Papa Atawhai o Waitaha me Aoraki

Annual Report

July 2016 – June 2017



Cover photograph:

Members of the Canterbury Aoraki Conservation Board at Hanmer Springs Ski Area, Mount Saint Patrick, St James Conservation Area
(Photo: M-L Grandiek 2017)

BACK L-R: Robert Wynn-Williams, Te Awhina Arahanga, Teoti Jardine, Helen Ivey, Kingsley Timpson (DOC), Sam Newton

FRONT L-R: Paula Smith, Joy Paterson, Sue McKenzie, Bruce Rule

Canterbury Aoraki Conservation Board

Te Rūnanga Papa Atawhai o Waitaha me Aoraki

Annual Report for the year ending 30 June 2017

Presented to the New Zealand Conservation Authority
Pursuant to Section 6(O) of the Conservation Act 1987



Mt Sefton, Aoraki Mount Cook National Park
(Photo: J Collaud, 2017)

ISSN: 1179-2469 (Online)

Serviced by:

Department of Conservation

Private Bag 4715

Christchurch Mail Centre

Christchurch 8140



Department of Conservation
Te Papa Atawhai



Contents

Chairperson’s Report – The Year in Review	5
Introduction	7
Annual Work Plan	9
Canterbury Aoraki Conservation Board Current Area of Jurisdiction	10
Membership	12
Conservation Board Meetings	13
Members Attendance	13
Field Trips	14
<ul style="list-style-type: none">• Rock Art and Biodiversity in an Urban Environment, South Canterbury• The Isaac Conservation and Wildlife Trust, Waimakariri• Glenfalloch Station, Upper Rakaia, Canterbury (Cancelled)• St James Conservation Area	
Community and DOC Involvement in Board Meetings	17
Workshops	18
Subcommittees and Subcommittee Structure as at June 2017	20
Board Functions Under Section 6M of the Conservation Act 1987	21
<ul style="list-style-type: none">• Conservation Management Strategies• Conservation Management Plans• Change of Status• Liaison with Fish and Game Councils• Delegated Functions• Other Functions	
Powers of the Board Under Section 6N of the Conservation Act 1987	26
Responsibilities of the Board under other Sections of the Conservation Act 1987	27
Board Functions under the National Parks Act 1980	28
Liaison	29
<ul style="list-style-type: none">• Liaison Persons• Other Conservation Boards• Community• District and Regional Councils• Iwi• Non-Government Organisations	
Appendix I – Annual Work Plan and Milestones	35

Chairperson's Report – The Year in Review



Kia Ora

It's been a very active year for the Canterbury Aoraki Conservation Board. Substantial progress has been made including the completion, and now implementation, of the Canterbury Waitaha Conservation Management Strategy. The Department of Conservation has implemented an annual traffic light reporting system to monitor progress on achieving milestones, and which can be found within this report.

Other positive outcomes include:

- Commencing the review of the St James and Poplars stewardship land status
- Implementing a strategic planning and reporting process for tenure review lands in our region
- Hosting a successful Awards function to recognise the efforts of people and groups making a difference to conservation in Canterbury.

Our priority focus areas:

1. The successful review of the Aoraki Mount Cook National Park Management Plan. This work, undertaken together with DOC and Ngāi Tahu, has been making strong progress, with the Board signalling a series of key points that it wishes to be incorporated into the final draft being released in the first half of 2018. This includes ensuring effective soundscape management, spatial planning of the main use areas, and managing recreation and tourism use in ways that ensure the underlying ecological and conservation values are not adversely impacted.
2. Identifying ways, the upper Tasman and Godley riverbeds can be protected and managed, so their globally unique character is never compromised. We continue to urge that they shift from their unallocated crown land status within LINZ to a robust conservation status according the Conservation Action 1987, including management by the Department of Conservation.
3. It is clear that conservation needs greater resources to ensure biodiversity is better protected. There is a sense that much more is needed to be done if we are to effectively fulfil our roles as kaitiaki and guardians of our precious places and all they contain.

Other priorities for the Board include:

- Halting the deteriorating numbers of other species like kea in our region
- Ensuring effective monitoring of biodiversity and species at risk including inanga/whitebait
- Increasing protection for all of Canterbury's braided rivers
- Supporting Ngāi Tahu and DOC's Te Ara Hononga Partnership Engagement Framework
- Supporting Predator Free 2050, Battle for our Birds and Wilding Conifer Eradication initiatives
- Maintaining the current level of huts, tracks, and other recreation facilities
- Managing the impacts of tourism, and identifying ways to harness additional benefits to conservation in the process
- Ensuring more resources for conservation in Canterbury

The Board acknowledges the work of its departing members:

- Bruce Rule, especially for his expertise in species recovery work, and his liaison role with Fish & Game
- Dr Benita Wakefield, for her contribution to the Board especially in engaging communities with conservation.

The Board is extremely grateful to the support given to it by the Department of Conservation. Our deep appreciation goes to all those in our community, and also in the Department of Conservation, for all that is being done to protect our regions most important places and treasures.

Nga mihinui



Dr Mick Abbott
Chairperson, Canterbury Aoraki Conservation Board

Introduction

This is the nineteenth annual report from the Canterbury Aoraki Conservation Board, as required under **Section 6 of the Conservation Act 1987**.

The Canterbury Aoraki Conservation Board is a twelve-member citizen body appointed by the Minister of Conservation under the terms of the **Conservation Act 1987, Part IIA and Section 6**.

This year there were two new appointments to the Board. One was a Ngāi Tahu appointee and the other, a general member. Both were appointed in July 2016. There were also three re-appointments, one of these was a Ngāi Tahu appointee, and two were general members.

The Board works within a partnership between the Department, the Minister of Conservation, and the public. As the public voice for community input into conservation, the Board is an independent trusted advisor to the Department and the New Zealand Conservation Authority.

The Board helps to achieve conservation outcomes for New Zealand and particularly the **Canterbury region** by:

- Contributing a strategic perspective to conservation planning, policy development and decision-making as a well-informed voice of the community;
- Exercising powers of recommendation and approval for statutory management planning documents;
- Advising on the implementation of statutory planning documents; and
- Advocating for conservation outcomes, including in public forums and through statutory planning processes.

The roles and functions of the Conservation Board are set out in the **Conservation Act 1987** as follows:

- To recommend the approval by the New Zealand Conservation Authority of conservation management strategies and the review and amendment of such strategies, under the relevant enactments (in particular the Canterbury Conservation Management Strategy, CMS);
- To approve conservation management plans, and the review and amendment of such plans, under the relevant enactments;
- To advise the New Zealand Conservation Authority and the Director-General on the implementation of conservation management strategies and conservation management plans for areas within the jurisdiction of the Board;

- To advise the New Zealand Conservation Authority or the Director-General on any proposed changes to the status or classification of any land areas of national or international significance;
- To advise the New Zealand Conservation Authority or the Director-General on any other conservation matter relating to any area within the jurisdiction of the Board;
- To liaise with Fish and Game Councils on conservation matters; and
- To exercise such powers and functions as may be delegated to it by the Minister of Conservation, the **Conservation Act 1987**, or any other act of parliament.

The roles and functions of the Conservation Board are set out in the **National Parks Act 1980 (Section 30)** as follows:

- To recommend management plans, and the review or amendment of such plans, for national parks within the jurisdiction of the Board (in particular Aoraki/Mount Cook and Arthur's Pass National Parks);
- To consider and determine priorities for the implementation of management plans for national parks (in particular Aoraki/Mount Cook and Arthur's Pass National Parks);
- To review and report to the New Zealand Conservation Authority or the Director-General as appropriate, on the effectiveness of the administration of the general policies for national parks within the jurisdiction of the Board; and
- To give advice to the New Zealand Conservation Authority or the Director-General on the interpretation of any management plan for a national park, and on any proposal for the addition of land to any national park, or the establishment of a national park, and on any other matter relating to any national park within the jurisdiction of the Board.
-

The Board is serviced by the Department of Conservation.

Section 60 of the Conservation Act 1987 requires that every Conservation Board provide the New Zealand Conservation Authority with an Annual Report as soon as practicable after 30 June each year. In recognition of this requirement, the Canterbury Aoraki Conservation Board submits its Annual Report for consideration.



Lake Poaka, Twizel (Photo: M-L Grandiek)

Annual Work Plan

The Board received a “Letter of Expectation” from the Associate Minister of Conservation, the Hon Nicky Wagner in August 2016. This letter set out what the Associate Minister required the Canterbury Aoraki Conservation Board to achieve for the 2016/17 year. She outlined six main areas that she wanted the Board to work on, and report via this document.

Working with the Department of Conservation

Government and Ministerial Priorities

Your Community

Working with adjoining Boards and the New Zealand Conservation Authority

Profile

Regional Work Programme and Monitoring

Summary

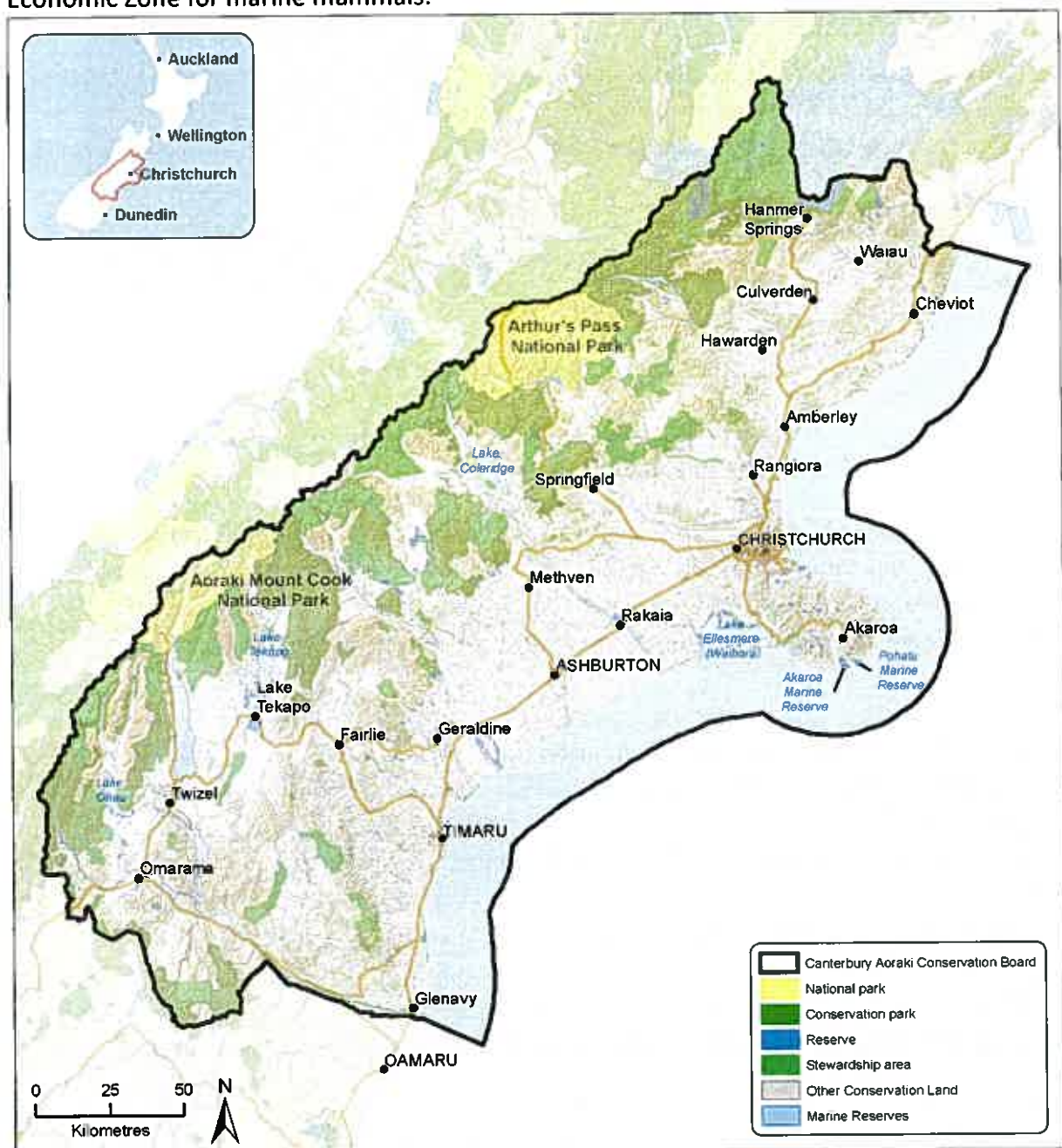
Please refer to **Appendix I** for a full report on the Board’s Annual Work Programme.

Canterbury Aoraki Conservation Board Current Area of Jurisdiction

The Board's area of jurisdiction extends from the Conway and Clarence Rivers in the north and west to the main divide, including all of Arthur's Pass and Aoraki Mount Cook National Parks.

The southern boundary is the catchment of the Waitaki River at Kurow, along the river to the east coast.

The coastal boundary is the twelve-mile limit for marine reserves and the Exclusive Economic Zone for marine mammals.



The main features of Public Conservation Land and Water within the Board's boundaries are:

- Two national parks – Aoraki Mount Cook and Arthur's Pass
- Part of one national reserve – Lewis Pass Scenic
- Eight conservation parks – Craigieburn, Lake Sumner, Hanmer, Ahuriri, Korowai/Torlesse Tussocklands Park, Ruataniwha, Hakatere and Te Kahui Kaupeka, part of Hawea and part of Oteake
- Hurunui, Hawdon and Poulter predator-controlled areas (formerly part of Operation Ark)
- Two marine reserves – Pōhatu and Akaroa
- One wilderness area – Adams – that is jointly managed between Canterbury and the West Coast
- A large number of scenic, historic, scientific, nature and other reserves and conservation areas including Stewardship areas. This includes in excess of 80,000ha of new Conservation Lands at St James providing a diverse range of recreation and special protected areas
- The DOC managed portion of Te Waihora/Lake Ellesmere

The Canterbury region directly administers 1,117,254 hectares including the 215ha Pōhatu Marine Reserve and the 512ha Akaroa Marine Reserve. In the past 12 months, 10,569 hectares of Public Conservation Land (PCL) and Covenant Land has been added to the region following the tenure review process: Irishman Creek, Kirkliston and Caberfeidh Stations.



St James Range (Photo: M-L Grandiek)

Membership

The Board comprises eight general members and four appointees of Te Rūnanga o Ngāi Tahu (*), in accordance with Section 273 of the **Ngāi Tahu Claims Settlement Act 1998**. Two new members were appointed in July 2016; Joy Paterson and Dr Benita Wakefield (Ngāi Tahu appointee). Joseph Hullen (Ngāi Tahu appointee), Sam Newton and Paula Smith were reappointed for a term of another three years. Dr Benita Wakefield (Ngāi Tahu appointee) resigned in December 2017. An appointee to the position for the remainder of the term (June 2019) is yet to be made.

Dr Mick Abbott (Chairperson)
 Te Awhina Arahanga*
 Joseph Hullen*
 Helen Ivey
 Teoti Jardine*
 Sue McKenzie
 Sam Newton
 Joy Paterson
 Bruce Rule
 Paula Smith
 Dr Benita Wakefield*
 Dr Robert Wynn-Williams

Banks Peninsula (Little River)
 Taumutu (Lake Ellesmere)
 Tuahuriri (Kaiapoi)
 Glentanner, Aoraki/Mount Cook
 Arowhenua (Christchurch)
 Charing Cross
 Christchurch
 Twizel
 Christchurch
 Diamond Harbour, Banks Peninsula
 Arowhenua (Christchurch)
 Christchurch



Conservation Board Meetings

The Canterbury Aoraki Conservation Board held five meetings during the reporting period. The venues for Board meetings each year are chosen to ensure as wide a coverage as possible, and to enable members of the public throughout their district to have access to the Board.

2 September 2016	Geraldine
25 November 2016	The Isaac Conservation and Wildlife Trust, Christchurch
17 February 2017 <i>(cancelled due to Port Hills fires)</i>	DOC Office, Rangiora
21 March 2017	DOC Office, Christchurch
12 April 2017	Hanmer Springs

Member's Attendance

Board Member	Area	Number of meetings attended
Dr Mick Abbott	Banks Peninsula (Little River)	5/5
Te Awhina Arahanga	Taumutu (Lake Ellesmere)	3/5
Joseph Hullen	Tuahuriri (Kaiapoi)	2/5
Helen Ivey	Glentanner, Mount Cook	4/5
Teoti Jardine	Arowhenua (Christchurch)	5/5
Sue McKenzie	Charing Cross	5/5
Sam Newton	Christchurch	3/5
Joy Paterson	Twizel	4/5
Bruce Rule	Christchurch	4/5
Paula Smith	Banks Peninsula (Diamond Harbour)	5/5
Dr Benita Wakefield	Arowhenua (Christchurch)	1/5
Dr Robert Wynn-Williams	Christchurch	4/5

Field Trips and Site Inspections

Three field trips were held during the year.

Rock Art and Biodiversity in an Urban Environment – South Canterbury,

- Inspect rock art at Raincliff Historic Reserve
- Guided tour of Taniwha rock art site
- Visited Washdyke Lagoon and discussed management issues and recent Zone Committee and Council initiatives to restore and improve the lagoon.
- Travelled to Caroline Bay. Discussion on Blue Penguin management e.g. pros/cons of the birds being in a busy port and urban environment



Raincliff Historic Reserve

The Isaac Conservation and Wildlife Trust, Waimakariri, 25 November 2016

The Board met at the McLean's Island property of Sir Neil and Lady Isaac, now under the guardianship of The Isaac Conservation and Wildlife Trust.

The Board visited the following sites accompanied by ICWT Operations Manager and Board member, Bruce Rule.

Peacock Springs

- Met with Anne Richardson, Wildlife Manager
- Viewed the breeding facilities
- Briefed on the captive breeding programmes for a number of endangered and endemic birds including Kākī (black stilt), Whio (blue duck), Orange-fronted parakeet, New Zealand Shore Plover, and the Brown Teal

All species housed at Peacock Springs are managed through recovery programmes in conjunction with the Department of Conservation and are purely bred and reared for release into the wild.



Kakī, or black stilt (*Himantopus novaezelandia*) (Photos: J Paterson)

Otukaikino Stream

- Met with Arthur Adcock, Parks Ranger, Christchurch City Council
- Viewed the Otukaikino Stream (south branch of the Waimakariri River)
- Briefed on installation of culverts, maintenance of bridge spanning stream and planting of 45,000 natives along the banks
- Briefed on progress of establishing a walking track which will be opened to the public, forming a link with the Waimakariri Recreational Reserve to The Groynes and Roto Kohatu



Bridge over Otukaikino Stream (Photo: B Rule)

Isaac Heritage Village

- Met with Rachel Brewer and Peter Jones, ICWT
- Viewed the Isaac Heritage Village
- Briefed on the historical significance of the buildings from c1860 to c1940 that have been rescued from demolition and brought to site to be restored.

Glenfalloch Station, Upper Rakaia, Canterbury, 16 February 2017
Cancelled due to the Port Hills fires in Christchurch

Field Trip to St James Conservation Area – April

Located on three mountain ranges, the St James Conservation Area encompasses exceptional natural features and recreation opportunities. Glaciated valleys, glacial moraine deposits, streams, wetlands, lakes, and high-altitude tarns all dominate the area. The St James Conservation Area covers 78,000ha of native beech/tawhai forests, alpine tussock lands, rivers, lakes, and mountains. It was a key route for Maori between the east and west coasts, travelling through the Clarence and Waiau valleys.

Briefed by DOC staff, we gained an understanding and appreciation of:

- The topical and sensitive issues that surround the St James Conservation Area
- The challenges in administering the St James Conservation Area such as public use and access, weed control and stewardship land

Outcomes of the field trip ensured we are more informed and are able to act more effectively in relation to matters involving the St James Conservation Area, particularly in relation to our role in providing interaction between the public (community interests) and the Department of Conservation.



Board Members on St James and Molesworth Field Trip (Photo: M-L Grandiek)

L – R: Joy Paterson, Helen Ivey, Te Awhina Arahanga, Robert Wynn-Williams, Paula Smith, Sue McKenzie, Sam Newton, Bruce Rule, Teoti Jardine, Kingsley Timpson (DOC)

Community and DOC involvement in Board meetings

Throughout 2016/17, the Board welcomed presentations at its meetings from members of the public and from Department of Conservation staff who were responding to requests from the Board for more information on topics, so that Board members could make informed decisions.

The Board concentrated on getting briefings that were relevant to their Annual Work Plan and the CMS implementation.

These topics included:

- **Jude Borchers, Management Planner, Policy and Regulatory Services, DOC**
Jude gave a presentation on the newly approved Canterbury (Waitaha), Otago and Southland Murihiku (CMS) which became operative on 1 September 2016. Jude updated the Board on how the CMS is used, the interpretation (policies guiding decision making) of the document and what the main issues were in relation to the implementation of the CMS.
- **Jeff Dalley, Technical Advisor Monitoring, Science and Policy Group, DOC**
Jeff provided the Board with a report on 'Managing Anthropogenic Noise on Public Conservation Lands & Waters: A System Review'. Jeff informed us that the primary challenge to preserving and conserving natural soundscapes on New Zealand's Public Conservation Lands and Waters (PCL&W) is the management of unwanted human-caused-sound. This is also known as 'anthropogenic noise'.
- **Growing Voices**
The group spoke to the Board outlining their vision statement – that as young New Zealanders, they are a voice for future generations, they are stakeholders in the future of Aotearoa and that they are taking responsibility for the future preservation of Aoraki Mount Cook National Park. Growing Voices also provided the Board with a summary on their draft submission to the National Park Management Plan Review.
- **Susan Goodfellow, Central Plains Water Enhancement Scheme**
Susan provided a presentation of the Scheme, outlining its utilisation of run-of-river water from the Rakaia and Waimakariri Rivers and stored water from Lake Coleridge. This was of particular interest to the Board given that one of our key positions is braided river protection.
- **Andrew Grant, Technical Advisor, Ecology – Ecosystems and Species, DOC**
Discussion on endangered species that are dependent on braided rivers to survive, and how the maintenance of the river flow is essential to the ecology of the ecosystem/lifeforce of the river.



Waitaki River Mouth (Photo: Google Earth)

Workshops

Aoraki Mount Cook National Park Management Plan Review

The Board held several workshops with the DOC Planning Team to discuss progress on the AMCNP Management Plan Review and confirm the Board's position on how the final draft plan will appear based on discussions to date. The Board resolved to have the AMCNP MPR as a standing item on their Agenda until completion of the review. This was ratified at the Board's April meeting.

Going forward, the Board will also hold further workshops (to be led by the Planning Team, DOC) prior to the October and December Board meetings. These meetings are to include updates on the AMCNP MPR and St James Reclassification.

Tenure Review

The Board met with the Tenure Review Team (DOC) and representatives from Land Information New Zealand (LINZ). The Board received a presentation providing a detailed description of the tenure review process, associated legislation and policies including the roles of each agency and their partnership with Ngāi Tahu. Discussion focused on current challenges facing the tenure review process such as public access including hunter access, marginal strips, stock access to waterways and land use change.

Going forward, the board discussed setting a strategic pathway for interactions with agencies responsible for tenure review and the Board's role in enhancing conservation outcomes from tenure review in the Canterbury Aoraki region.

Joint Workshop with Nelson Marlborough Conservation Board

The Board held a joint workshop with the Nelson Marlborough Conservation Board in April. Also in attendance was Lou Sanson, Director-General, Department of Conservation, the Director-Operations of both Northern and Eastern South Island Conservancies and supporting DOC staff. We received a presentation on Tenure Review and discussed topics around the Clarence River and ECan proposals. During the afternoon session, we examined:

- The future of Molesworth
- St James land reclassification
- Cross-boundary issues
- Increasing tourism pressures



Joint Workshop – Nelson Marlborough and Canterbury Aoraki Conservation Boards (Photo: K Inwood)

FRONT L-R:

Robert Wynn-Williams, Te Awhina Arahanga, Mairangi Reiher, Amelia Taylor, Katie McNabb, Helen Ivey, Bob Dickinson

MIDDLE L-R:

Paula Smith, Joy Paterson, Joy Shorrocks, Aat Vervoorn, Gina Solomon, Bev Doole, Lou Sanson, Bruce Rule, Sue McKenzie

BACK L-R:

Roy Grose, Andy Roberts, Noel Hyde, Murray Poulter, Sam Newton, Mick Abbott, Steve Knight, Teoti Jardine

Sub-Committees

Canterbury Aoraki Conservation Board Committee Structure as at June 2017

Committee	Function	Membership
Aoraki/Mount Cook National Park Management Plan Review	To review the National Park's Management Plan	Robert Wynn-Williams (Chair) Teoti Jardine Paula Smith Sam Newton *Mick Abbott
Awards, Marketing and Acknowledgement	To plan and deliver an event to present the Board award in October	Sue McKenzie (Chair) Joseph Hullen Teoti Jardine Bruce Rule *Mick Abbott
Concessions	To advise DOC on any concessions that meet the Board's triggers	Robert Wynn-Williams (Chair) Sam Newton Teoti Jardine Joy Paterson Helen Ivey *Mick Abbott
Iwi	To liaise between Ngāi Tahu and the Board To liaise with various runanga	Teoti Jardine (Chair) Te Awhina Arahanga Joseph Hullen Benita Wakefield *Mick Abbott
Land and Water	To present submissions on any relevant district plans and other statutory processes	Paula Smith (Chair) Sue McKenzie Bruce Rule Joseph Hullen *Mick Abbott
Tenure Review	To inspect and submit to LINZ on any properties that have a preliminary proposal advertised	Helen Ivey (Chair) Sam Newton Robert Wynn-Williams Paula Smith *Mick Abbott

*Note that Mick Abbott as Board Chairperson is ex-officio member of each committee

Board functions under Section 6M of the Conservation Act 1987

Conservation Management Strategies

To recommend the approval by the Conservation Authority of Conservation Management Strategies, and the review and amendment of such strategies under the relevant enactment 6M(1) (a)

The Canterbury (Waitaha) Management Strategy (CMS) was signed off by the New Zealand Conservation Authority in June 2016, was publicly released and became operative on 1 September 2016. The new CMS approach aims to provide a consistent format, a consistent policy approach, and reflect national priorities and outcomes at places.

Conservation Management Plans

To approve Conservation Management Plans, and the review and amendment of such Plans, under the relevant enactments 6M(1)(b)

No management plans were reviewed, amended, or approved during the 2016/2017 period.

Implementation

To advise the Conservation Authority and the Director General on the implementation of Conservation Management Strategy and Conservation Management Plans for areas within the jurisdiction of the Board 6M(1)(c)

As above – no management plans were reviewed, amended, or approved during the 2016/2017 period.

Change of Status

To advise the Conservation Authority or the Director General on any proposed change of status or classification of any area of national or international importance 6M(1)(d)(i)

The Board was asked to provide comment on reclassifying land in the following places:

- Kaitorete – Kaitorete is a mixed sand and gravel barrier that separates the Pacific Ocean and Te Waihora. It is approximately 27kms long. Kaitorete has outstanding scenic, ecological, and cultural values, and unusual geomorphologic features. The due ecosystem supports many endemic species of fauna and flora, along with species of national significance, including arguably New Zealand's best population of katipo spiders.



The areas involved in this proposal are bordered in red and numbered 1-5. These numbered areas are described in Table 1 below. The blue shaded areas are existing scientific reserves.



General location - the land involved in this proposal is bordered red

The Board supported the Department's proposal to declare the designated public areas at Kaitorete held for conservation purposes as a reserve and further classified as a scenic reserve.

- Reclassification of public conservation land (including stewardship land) – 5-year Plan. A draft plan and criteria was referred to the Board with a request to provide our top five candidates for reclassification. The criteria included such factors as location, size, values (i.e., ecological, species, recreation, historic), threats, benefits, and impacts as well as drawing on material within the databases of the Biological Management Units (BMU) and Land Environments of NZ (LENZ).

CANTERBURY AORAKI CONSERVATION BOARD			
RECOMMENDATIONS FOR STEWARDSHIP LAND RECLASSIFICATION			
Priority	Stewardship Land	Area (ha)	Proposed New Status
1=	The Poplars Conservation Area	4248	Conservation Park?
1=	St James Conservation Area	79429	Conservation Park?
1=	Conservation Area Nina Doubtful Rivers	3014	Conservation Park?
1=	Lower Doubtful/Boyle River Conservation Area	1557	Conservation Park?
2=	Central Southern Alps Wilberforce Conservation Area	7454.10	Add to Craigieburn Conservation Park?
2=	Rangitata/Rakaia Headwaters Conservation Area	53959	Add to Hakatere Conservation Park
3	Conservation Area Kaitorete Spit (3 parcels)	72.84	Scientific reserve?
4=	Conservation Area Waikewai Creek Taumutu (2 parcels)	2.83	Mahinga Kai Conservation Park
4=	Conservation Area -Lakeside	4.05	Mahinga Kai Conservation Park
4=	Conservation Area -Landing Yard Point	2.43	Mahinga Kai Conservation Park
4=	Conservation Area -Te Waihora Harts Creek	6.83	Mahinga Kai Conservation Park
4=	Conservation Area -Te Waihora Proposed Picnic Area	7.83	Mahinga Kai Conservation Park
4=	Conservation Area - Greenpark Sands Lower Selwyn Hut	1.9	Mahinga Kai Conservation Park
4=	Conservation Area - Lower Selwyn Huts	1.93	Mahinga Kai Conservation park
4=	Conservation Area - LII River Silverstream	0.60	Mahinga Kai Conservation Park
4=	Conservation Area - Greenpark Sands	1246.62	Mahinga Kai Conservation Park
4=	Conservation Area - Lakelands Wildlife Reserve	213.57	Mahinga Kai Conservation park
4=	Conservation Area - McQueens Lagoon (2 parcels)	24.39	Mahinga Kai Conservation Park
4=	Waiwera Conservation Area	651.73	Mahinga Kai Conservation Park?
5=	Ruataniwha Conservation Area	35800.77	Conservation Park additions
5=	CA-Castle Hill x2 (2 parcels)	8472.85	Conservation Park additions
5=	CA-Cass Valley	214.89	Conservation Park additions
5=	CA-Mt Horrible	439.36	Conservation Park additions
5=	Porter Heights CA	727.61	Conservation Park additions
5=	Ben More CA	29.66	Conservation Park additions
5=	Oxford Forest CA	13308.00	Conservation Park additions

- **St James Conservation Area**

The process to consider the reclassification of the St James Conservation Area and other adjoining and linked public conservation land, is underway. The 79,300 ha St James Conservation Area is the very large area of stewardship land that is the focus of the reclassification project. As an initial proposition, the status of the following other areas of public conservation lands will also be reviewed:

Hanmer Forest Park, Conservation Park	11,800ha
Woodbank Conservation Area, Stewardship Land	2,200ha
Lake Sumner Forest Park on the northern side of SH7, Conservation Park	15,300ha
The Poplars Conservation area on the north side of SH7, Stewardship Land	2,100ha
Total proposed area being investigated	110,700ha



Hanmer Forest Park (Photo: M-L Grandiek)

A review of the status of public conservation lands in this area is a priority because we know that the classifications of these areas does not necessarily reflect all of the conservation values present and this impacts on the protection, management and use of the areas. This is now a 'standing' agenda item for the Board until the reclassification project is completed.

Conservation Advice

*Any other conservation matter relating to any areas within the jurisdiction of the Board
6M(1)(d)(ii)*

Conservation matters the Board has given advice on to the Department or the New Zealand Conservation Authority or other government departments or bodies with an interest are:

- Tenure Review, including advice to the Department; advocacy to LINZ and submissions on Tenure Review properties when required. This included:
Glenfalloch Station - Pastoral Lease
Twin Peaks Station – Pastoral Lease
Omahau Hill Station – Pastoral Lease

- **Concessions.** With the review of the Aoraki Mount Cook National Park Management Plan, the Board requested that information on **ALL** concessions applied for within the National Park be referred to the Concessions Committee. Comments were made on:
 - Southern Alps Guiding – Aircraft Landings
 - Aoraki Mount Cook Guiding Company Ltd – Guided 4WD trips
 - Mount Cook Glacier Guiding Ltd – Aircraft Landings

- **Advice to Environment Canterbury (ECan)** through submissions on the following:
 - Lyttelton Port Company Harbour Reclamation
 - Canterbury Regional Pest Management Plan Review
 - Benmore Irrigation Scheme
 - Lyttelton Harbour Dredging

- **District Plan Review.** With a number of District Plans under review, the Board has requested the Department provide regular reports on the status of these reviews.
 - Hurunui District Plan Review
 - Mackenzie District Plan Review
 - Waitaki District Plan Review
 - Timaru District Plan Review
 - Selwyn District Plan Review

- **Other.** Game Animal Council – Submission on Export Levy

Liaison with Fish and Game Councils

To liaise with Fish and Game Councils on matters within the jurisdiction of the Board 6M(1)(f)

Bruce Rule as the Liaison appointed member of the Board, attended Fish & Game meetings, and met with the Chair, Fish & Game, North Canterbury in November 2016. Discussions were held on a variety of topics including the Fresh Water Trust. Also met with the Manager, Fish & Game, North Canterbury in March 2017. Discussions were held on a new lease agreement with the Isaac Conservation & Wildlife Trust to rear salmon and trout and the removal of Canadian Geese.

Delegated Functions

To exercise such powers and functions as may be delegated to it by the Minister under this Act or any other Act 6M(1)(g)

The Minister has not delegated powers or functions under this sub-section.

Other Functions

Every Board shall have such other functions as are conferred on it by or under this Act or any other Act 6M(2)

The Board ensures that its decisions and recommendations are consistent with the requirements of Section 4 and the Conservation Act 1987

Powers of the Board under Section 6N of the Conservation Act 1987

Section 6.1 Every Board shall have all such powers as are reasonably necessary or expedient to enable it to carry out its functions 6N(1)

The Board has focused its efforts during the year on:

- Tenure Review. See section on **Community and DOC Involvement**
- A concentrated effort by the Board to develop an understanding of the issues surrounding stewardship land which prompted the Board to request a report on Land Status Comparisons which provided tables comparing national park and conservation park statuses and the overlays that are available to be incorporated into those statuses.
- The Board has tried to focus on policy issues and became involved in management issues only when the Department requested comments or advice.
- A concentrated effort by the Board to develop an understanding and provide feedback on the Aoraki/Mount Cook National Park Management Plan Review. See section on **Board Functions Under the National Parks Act**.
- The Board has made several submissions to various organisations on areas that are of interest. See section on **Conservation Advice**.

Section 6.2 Without limiting the generality of sub-section (1) of this section each Board may under 6N(2):

- *Advocate its interest at any public forum or in any statutory planning process 6N(2)(a)*

There are 10 District Plans within the Board's area of jurisdiction.

The relevant committees monitor legislative changes, District Plan Reviews and Resource Consent Applications and take appropriate action where conservation values are threatened. See section on **Conservation Advice** for submissions that the Board has made.

- *Appoint committees from members and other suitable persons and delegate to them functions and powers 6N(2)(b)*

Each committee of the Board has the power to act on behalf of the Board in accordance with its delegation, and any decisions ratified at the following Board meeting.

Draft General Policies

The Conservation Authority may consult any Conservation Board about the draft of a general policy after receiving submissions on it 17b(3)(1)(ii)

The General Policy for National Parks and the Conservation General Policy were adopted in May 2005.

Freshwater Fisheries Management

Draft freshwater fisheries management plans are to be prepared by the Department in consultation with the Conservation Boards affected by them 17K(1)(a)

No such plans affecting the Board's district are in preparation at this time.

Reduction of width of, or exemption from, marginal strips

The Minister of Conservation shall consult the relevant Conservation Boards about any proposal made by a Crown Land disposal agency to reduce the width of, or provide an exemption from, a marginal strip, and on being satisfied that it is reasonable in the circumstances to do so, the relevant Conservation Board ... may request the Minister to publicly notify the proposal. 24BA

No consultations were made during the year.

Responsibilities under other Sections of the Conservation Act 1987

Co-opting Members of the Board 6Q(1)

No members were co-opted during the year.

Advice on Granting Lease of Licence in the Absence of a CMS or CMP

No advice was given during the year.

Board Functions under the National Parks Act 1980

The Board is responsible, in conjunction with the Department, for preparing draft reviews of management plans, for hearing and deciding on public submissions on any draft review and for recommending any review to the New Zealand Conservation Authority for approval Sections 30(a) and 45-47

There are two National Parks either wholly or partially within the Board's area of jurisdiction. Each National Park has a management plan which is reviewed at 10-year intervals.

- The Arthur's Pass National Park Management Plan has been reviewed and was approved by the New Zealand Conservation Authority on 13 December 2007.
- The Aoraki Mount Cook National Park Management Plan was approved by the New Zealand Conservation Authority on 14 April 2004. The Department advertised their intent to review the plan in June 2016.

The Board appointed a Committee to assist the Department in undertaking the review, and has expanded this to include all Board members save one (conflict of interest). The Board held a workshop in March with presentations from the Department's Planning Team who outlined the process for the Management Plan Review including the preparation of Topic (discussion) Papers and the proposed huis to obtain consultation and feedback from stakeholders. Presentations were also received from Ngāi Tahu outlining the Te Ao Māori Integration and the proposed "Rakatira concept" for the Park. A further workshop was held in June with the Board finalising its Table of Key Outcomes for the Management Plan Review.

Going forward, the Board moved to hold further workshops prior to their October and December 2017 meetings – these are to be led by the Department's Planning Team. The Planning Team is aiming to have the draft plan completed by early December 2017. The Management Plan Review will be a main area of work for the Board in the upcoming year.

Advise on any other matter relating to National Parks 30(f)(iii)

Aoraki/Mount Cook National Park

The Board continues to have an ongoing interest in the management of the Aoraki/Mount Cook National Park, and advised the Department where required on concessions and other matters. *See section on Board Functions – Conservation Management Plans.*

Arthur's Pass National Park

The Board continues to have an ongoing interest in the management of the Arthur's Pass National Park, and advises the Department where required on concessions and other matters. No amendments were made to the Arthur's Pass National Park Management Plan in the 2016/17 year.

Liaison

The Board has appointed various members to liaise with outside agencies as follows:

Liaison Person	Organisation
Mick Abbott	New Zealand Conservation Authority
Helen Ivey	Mackenzie District Council Mackenzie Country Trust Himalayan Tahr Control Plan Implementation Group Tahr Interest Group
Iwi Committee	Te Runanga O Ngāi Tahu and associated individual runanga
Teoti Jardine	Arowhenua runaka Avon Otakāro Group Volunteering Canterbury
Sam Newton	Recreation Groups
Paula Smith	Environment Canterbury & Territorial Authorities Banks Peninsula Water Management Zone Committee
Bruce Rule	Fish & Game Council – Canterbury region
Robert Wynn-Williams	South Island Conservation Boards Game Animal Council Deerstalkers Groups Christchurch/West Melton Water Zone Committee
Joy Paterson	Mackenzie District Council Territorial Authorities

Other Conservation Boards

The Board's immediate neighbours are the Otago, West Coast/Tai Poutini and Nelson/Marlborough Conservation Boards.

Robert Wynn-Williams as liaison person, monitors the minutes of the various Boards (and the New Zealand Conservation Authority) for issues of common interest, and reports back at each meeting on common themes from these minutes.

This year the Department continued with one regional meeting where the South Island Board Chairs met to discuss areas of common interests or concerns. There was also a national conference for Board Chairs in Wellington, where the various Board Chairs met with the Associate Minister of Conservation, the Director-General of the Department of Conservation, and the New Zealand Conservation Authority.

Community

The Board has continued to involve the community in its work. It holds meetings around the Canterbury area and the public are encouraged to participate in public forums at these meetings. This year few public attended the meetings, but the Board has been proactive in obtaining briefings on areas they have required information on. *See section on [Community and DOC Involvement in Board Meetings](#), for more information on who has been asked to present to the Board.*

The Board seeks to represent the public interest and continues to strive to learn the views of the public. It would like to encourage more people to attend meetings and take advantage of the opportunity to address the Board during the public forum.

Board members have been active in other areas where they are members of community committees or groups. This has included the likes of Water Zone Committees, Community Boards, recreation groups such as the New Zealand Alpine Club and some urban based groups that are associated with the Christchurch rebuild and earthquake recovery process. Board members are encouraged to attend community events and report back at each meeting.



Red mistletoe (*Peraxilla tetrapetala*) – Ruataniwha Conservation Park (Photo: M-L Grandiek)

The following is an example of community meetings and events that have been attended by Board members, although not necessarily as a representative of the Board:

Board Member	Community Group
Te Awhina Arahanga	Te Taumutu Runaka Natural Resources Portfolio Kaitiaktanga Te Repo Orariki Restoration Project Snake Creek Restoration Project TRoNT NZTA – Land Transport Programme Environment Canterbury – Flood Protection Work Christchurch City Council – Heritage Strategy Lincoln Agritech – National Science Challenge
Helen Ivey	The Mackenzie Trust Thar Liaison Group Wilding Conifer Strategy Mackenzie Basin Wilding Tree Charitable Trust
Teoti Jardine	Volunteering Canterbury Trust Board Whaka Inaka presentation, Canterbury University Growing Voices Kaupapa Arowhenua Runaka hui Avon-Ōtākaro Network Mahinga Kai Exemplar Project Sustainable Coastline Planning Environment Canterbury Canterbury Poets Collective Sustainable Coastlines New Brighton Clean Up Aoraki Environmental Consultancy Christchurch Men’s Prison Regenerate Christchurch
Joy Paterson	Mackenzie District Council - Plan Change 17, Mackenzie Agreement Trust, Freedom Camping Twizel Community Fire Meeting Aoraki Mackenzie International Dark Sky Reserve
Bruce Rule	Fish & Game, North Canterbury Lake Coleridge Fishing Competition Fresh Waters Trust
Paula Smith	Banks Peninsula Water Management Zone Committee Whakaraupo Lyttelton Harbour Environment Canterbury - Erosion and Sediment Control Banks Peninsula Conservation Trust, Lyttelton Road Cutting Stabilisation Trial, Lyttelton Port Company Reclamation Freshwater Fun Day, Okuiti Valley Christchurch City Council - Heritage Workshop
Robert Wynn-Williams	Christchurch/West Melton Water Management Zone Committee

Conservation Board Awards

The Board’s Awards, Marketing and Acknowledgements Committee revamped the awards process and format. This culminated in the annual Canterbury Aoraki Conservation Board Awards “Te Waka o Aoraki” being presented on 27 October 2016 at the Christchurch Art Gallery.

The winners were decided from over 30 entries and were awarded in three categories:

Recreation Award – 180 Degrees Trust
Southern Alps Traverse Expedition for 10 disadvantaged youth designed to educate and empower youngsters aged between 13-17 years.



(Photo: Giora Dan)

Biodiversity Award – The Arthur’s Pass Wildlife Trust
Predator Free Arthur’s Pass which aims to rid the area of introduced predators to enable the native wildlife to flourish and increase in numbers.



(Photo: Giora Dan)

Young New Zealanders Award – St Andrews School, Timaru
Working Waters Trust featuring the conservation of the mudfish’s natural habitat by Year 7 and 8 students, with the wetlands becoming an outdoor classroom for the children.



(Photo: Giora Dan)

District and Regional Councils

The Board has continued to develop a good relationship with councils. Councillors and district Mayors are invited to attend meetings and local issues often appear on the Board's agenda. Paula Smith was appointed as Liaison for Environment Canterbury (ECan) and Territorial Authorities and attended meetings, perused public notices and chaired the Land and Water Committee. This including the writing of a number of submissions for the Board on various plans, consents, and reviews. These included:

- "Clean Water: 90% of Rivers and Lakes Swimmable by 2040" and Proposed Amendments to the National Fresh Water Policy Statement
- Proposed Marine Protected Areas for the South-East Coast, South Island

Iwi

Ngāi Tahu nominates four members of the Board. They are individually selected by their Papatipu Rūnanga, and their status as representatives of local hapū is endorsed by Te Rūnanga o Ngāi Tahu.

Board minutes are circulated and conservation issues of concern feature regularly on meeting agenda of both organisations. Liaison representatives have been active in attending runanga meetings and updating runanga on the work of the Board.

The Ngāi Tahu nominated members of the Board have formally met with both Te Rūnanga o Ngāi Tahu and Departmental staff with regards to the Aoraki/Mount Cook National Park Management Plan Review. This has facilitated good discussion on appropriate content.

The Ngāi Tahu nominated members of the Board ensure a Ngāi Tahu perspective is considered before any final conclusions are reached.

Non-governmental organisations

The Board has continued to foster regular meetings with non-governmental organisations, when appropriate, and had a presentation from Central Plains Water Limited at their November meeting.

Community Conservation Partnership Fund

This is a fund set up by the Department to help fund community groups to do conservation work. Sam Newton and Teoti Jardine were the Canterbury representatives on the committee set up to select suitable recipients.

APPENDIX I – Canterbury Aoraki Conservation Board Annual Work Plan

Canterbury Aoraki Conservation Board Work Programme Report on Progress 1 July 2016 – 30 June 2017

Colour	Indicates
Green	Completed
Yellow	Started and is ongoing
Red	No started yet

Work Programme Overview

This Canterbury Aoraki Conservation Board work programme has been developed in response to the Letter of Expectation from the Associate Minister of Conservation dated 17 August 2016. It is structured in three parts, namely:

- Part A: Planned Board activities aimed at meeting the regional Work Programme contained in the letter:
 - Review/development/monitoring of statutory management plans including Conservation Management Strategies (CMS);
 - Advice relating to stewardship land;
 - Other statutory functions for the Board;
 - Advocacy; and
- Part B: Planned Board activities aimed at general expectations contained in the letter:
 - working with the Department;
 - taking account of the Ministerial priorities for the Department as contained in the Department's Four-year Plan;
 - working with adjoining Boards and the NZCA;
 - understanding the Board's contribution to giving effect to the principles of the Treaty of Waitangi;
 - general engagement with the community, including raising the profile of the Board; and
- Part C: risks/ issues from the Board's perspective, and opportunities for conservation growth that are not covered above.

PART A: REGIONAL WORK PROGRAMME

1 Review / development of statutory management plans including Conservation Management Strategies (CMS)

1.1 Board Objective:

The Board will actively work with Ngāi Tahu, DOC and submitters to ensure the effective and timely review of the Aoraki Mount Cook National Park Management Plan

Planned Board Activities, Success Measures and Key Milestones

Board members and its nominated subcommittee actively contribute to the process

A through participation in hui and public meetings

Progress:

The Board has been very active in its contribution to this process. We note the Department has undertaken a robust and committed approach to engaging stakeholders and also in its working with mana whenua to ensure the mana of Aoraki and the connection iwi have with the maunga and the place are at the core of the Plan. The Board has identified key areas that the Plan must effectively address including protecting biodiversity, conservation values of the Park's braided rivers and those that neighbour it, natural quiet, tourism encroachment, spatial planning, and ensure free and effective access for all New Zealanders. The Board looks forward to the Draft Plan being made available by March 2018 for comment and consultation.

B The Board works closely with relevant DOC directors, Ngāi Tahu managers, and the NZCA to identify and support the resolution of issues that may have a diversity of views and conflicting outcomes

Progress:

This year, Department of Conservation directors, Ngāi Tahu managers, New Zealand Conservation Authority nominees, and the Board Chair have undertaken to meet regularly to review progress on the Aoraki Mount Cook National Park Management Plan Review, and other conservation issues in the Canterbury Waitaha region. Such meetings (3 this year), are ongoing.

- C** The Board leads consideration of CMS policies related to the National Park Management Plan review including options to extend the boundary of the Park

Progress:

This is a high priority for the Board. DOC planners have indicated this falls outside of the scope of the park Plan Review process, and Ngāi Tahu note that due to resourcing and timing extensions to the park, might best be considered once the new management plan has been implemented. However, the Board considers that there is significant urgency given both the development and tourism pressures that are rapidly growing in the Mackenzie Basin. The Board notes that the previous Plan also indicated that such additions should have taken place within the life of the previous Plan. Given this, the Board remains keen that stakeholders keep focus on the importance of identifying relevant areas and in particular consider first the upper Tasman and Godley River beds and also the possibility of Lakes Tekapo and Pukaki. The Board is also concerned that management of lands and concessioned activities in the public conservation lands surrounding Aoraki Mount Cook National Park (including stewardship land) is undertaken in the context of increasing tourism pressures in Aoraki Mount Cook National Park. Hence, we recommend an assessment of the current CMS provisions to these lands once the draft Management Plan is issued for comment.

1.2 Board Objective:

In conjunction with the Department, the Board will determine priorities for implementation of the approved Canterbury CMS

Planned Board Activities, Success Measures and Key Milestones

- A** The Board will continue to bring focus to its list of CMS priorities where they can assist the Department of implement the Canterbury CMS once approved (Appendix A)

Progress:

Where possible the Department has incorporated Board priorities into its annual planning. The primary concern relates to a lack of scientific measures regarding the current status, including scientific monitoring of many threatened species in the region. A priority remains to implement a robust monitoring approach to the biodiversity assessment.

- B** The Board will work to ensure the Department implements a traffic light system of reporting back to the Board on progress on CMS delivery

Progress:

The Department of Conservation has implemented this, and we have received a full assessment of their current implementation status.

- C** The Department's official traffic light assessment of all CMS milestones to be presented to the Board by 1 June 2017

Progress:

As noted, this has now been implemented.

1.3 Board Objective:

In conjunction with the Department, the Board will seek to develop a Tenure Review strategy that works at a regional scale to effectively support the policies of the Canterbury CMS

Planned Board Activities, Success Measures and Key Milestones

- A** The Board will undertake a field trip that looks in detail at Tenure Review opportunities and challenges at both the farm and regional scale

Progress:

The Port Hills fires coincided with the field trip which was cancelled. This field trip is being rescheduled for 2018.

- B** The Board will develop a Tenure Review strategy document relevant to the Canterbury/Waitaha region

Progress:

A draft strategy has been developed and ratified.

2 Stewardship Land

2.1 Board Objective:

The Board will continue to provide the Minister and Department with advice on priorities for reclassification of stewardship areas that require increased protection because of their significant conservation values

Planned Board Activities, Success Measures and Key Milestones

- A** Respond to papers from the Department on reclassification of lands

Progress:

The Board responded to requests to prioritise the review of stewardship lands in its area. The number one priority region - the St James and Poplars Conservation Areas – are now under review.

- B** Work with the Department and Ngāi Tahu to commence the land status review for all public conservation lands and waters within the Northern High-Country Place, in support of the relevant Year 3 CMS milestone

Progress:

This is developing in the context of current reviews of the St James and Poplars Conservation Areas. The Board has identified it is imperative that the Department planners clearly articulate how Section 4 of the Conservation Act 1987 will be specifically expressed - for instance, values of mahinga kai, kaitiakitanga, enabling customary use etc; alongside specific provisions for other land categories including Conservation Park status.

- C** Ensure the Department and all stakeholders are aware of the high priority the Board has for reclassification of the St James Conservation Area from stewardship land to conservation park status

Progress:

The Department is to be commended for progressing this. This is important given that the St James Conservation Area represents fully 1% of the public conservation lands of Aotearoa New Zealand. However, comments noted in 2.1B (above), are highly relevant and must be expressly addressed in this review process.

- D** Invite the Director-General, Department of Conservation to tour St James Conservation Area

The Director-General, DOC attended a joint workshop between the Canterbury Aoraki and Nelson Marlborough Conservation Boards, held at Hanmer Springs in April 2017.

- E** Incorporate into field trips an overview of stewardship lands that would benefit from having their land status changed

Progress:

The April 2017 meeting included a field trip into the St James Conservation Area, presentation of the issues to the Director-General, DOC, and a shared discussion with the Nelson Marlborough Conservation Board on the need to review the St James region's conservation status.

- F** Champion the values of the CMS to stakeholders to support the McKenzie Trust's consideration of a Drylands Park

Progress:

The Board is very supportive of the intent of the Mackenzie Agreement and Trusts' work. The Board notes there are multiple land tenure issues and stakeholder expectations and ensuring effective outcomes in terms of securing important biodiversity protections requires much further work. The Board notes and commends the work of the Department's planners to engage with all relevant aspects of the Mackenzie District Council, LINZ, and ECan policy development and assessment work in the region.

3 Other statutory functions¹

3.1 Board Objective:

The Board will advise on proposed changes of status for nationally and internationally important areas, when sought by the Department

Planned Board Activities, Success Measures and Key Milestones

- A Work with the Department to achieve the CMS Milestone for Braided Rivers Place – a World Heritage Area of Wetland of International Importance achieved for at least one Canterbury braided river by Year 10

Progress:

This remains a high priority for the Board with its advocacy for more robust protections of the upper Tasman and Godley valleys forming part of this. We consider our efforts are best focused on ensuring greater and enduring protection for all braided Canterbury rivers both for biodiversity, water quality, and public access values. The Board will continue to request of the Department, a robust and feasible plan to ensure this objective is met in a measured and planned way over the coming 6 years.

- B Respond to requests and papers from the Department with advice on any proposed changes of status for nationally and internationally important areas

Progress:

The Board continues to respond to these requests and note ongoing concerns regarding the national and local status of inanga.

3.2 Board Objective:

The Board will nurture ongoing working relationships with Fish and Game Councils regarding issues of mutual interest within the region

Planned Board Activities, Success Measures and Key Milestones

- A Appoint a liaison person to actively engage with the local Fish and Game Councils in the region

Progress:

The Board notes its thanks to outgoing Board member Bruce Rule for his liaison work and welcomes Sam Newton's commencement in this role.

¹ This section should include Board functions relating to statutory functions under section 6M of the Conservation Act

- B** Report back to the Board on any issues of mutual interest that need to be explored

Progress:

No issues are currently noted.

4 Advocacy

4.1 Board Objective

The Board will pursue all reasonable opportunities to advocate at public forums and in any statutory planning processes

Planned Board Activities, Success Measures and Key Milestones

- A** The Board's Land and Water committee will actively work towards ensuring government agencies and planning processes receive relevant submissions from the Board

Progress:

The work of this Committee led by Paula Smith has ensured timely and effective submissions including tenure review proposals and marine mammal protection in Lyttelton Harbour.

- B** That representatives from this committee will advocate at public forums if required

Progress:

Paula Smith has represented the Board where and when required in an advocacy role.

- C** Work with the Department in developing submissions, so that they are aligned

Progress:

Departmental submissions have been made available to the Committee and liaison with DOC staff on submissions is ongoing.

- D** Work with the Department to receive a Planning report for each Board meeting, so that the committees can be informed on departmental submissions and work in the statutory planning process

Progress:

The Department's planning team has provided excellent updates at each Board meeting that provide clear briefings to the Board and the public who access these records. They both reveal the clarity of approach and the range of ways the Department planning team is working to ensure enduring outcomes for conservation in the Canterbury Waitaha region.

E Appoint liaison roles as appropriate

Progress:

Teoti Jardine has been working with the Growing Voices initiative to ensure the perspectives of young New Zealanders are being incorporated into the Aoraki Mount Cook National Park Management Plan Review.

PART B: GENERAL EXPECTATIONS

5 Working with the Department

Board Objective:

Board members will maintain good working relationships and open dialogue with Directors, Managers and Board Support Officers in order to engage strategically in conservation for the region

Planned Board Activities

- A** Board Chair will meet periodically with the Director Operations to ensure all are engaged to support conservation in the region

Progress:

This happens regularly by phone and meetings between formal Board meetings. The support provided by the Department's Statutory Manager has also provided very effective lines of communication with relevant Departmental staff.

- B** Board field trips will be aligned with the Annual Work Plan and any conservation topics that the Department considers the Board should be further briefed on

Progress:

The planning and organisational support provided by the Board Support Officer is highly effective in ensuring an ongoing strong alignment.

- C** The Board will work with the Department to ensure Board members are briefed on any areas where they require a better understanding of the departments work. This will involve briefings at Board meetings

Progress:

The Department is actively engaged in providing effective briefings.

- D** Board Chair and Board Support Officers to attend relevant Conservation Board Regional meetings where planned

Progress:

The Board Chair attend via teleconference, the Annual Regional Board Meeting of the four southern Board Chairs. The Board was honoured to host the New Zealand Conservation Authority over their February meeting which also included a field trip into the Craigieburn Forest Park and Arthur's Pass National Park regions. The Board Support Officer attended a hui for Board Support Officers from all the New Zealand Conservation Boards.

- E** Board Chair to attend where possible relevant NZCA and Conservation Board conferences and workshops

Progress:

The Board Chair attended the Annual Board Chair's meeting with the New Zealand Conservation Authority. NZCA member, Mark Christensen, continues to provide a strong ongoing liaison with the Board.

6 Taking account of Ministerial priorities for the Department²

Board Objective:

The Board will identify opportunities to support the relevant areas of work in the Canterbury rohe, as identified in the Ministers Letter of Expectation. These are:

- ***Streamlining tenure review process***
- ***Wilding Conifers***
- ***Engaging new groups and individuals with conservation values***
- ***Battle for the Birds***
- ***War on Weeds***
- ***Nature Watch***
- ***Heritage Landmarks and Icons***

Planned Board Activities

- A** Board to work with the Department in receiving updates on the above areas of work and key current operational issues including those that relate to biodiversity, recreational and management

Progress:

The Board has focused its work on the areas identified in the Ministers Letter of Expectation and this work is ongoing.

² This section could include where Boards are consulted on pest control operations

B Board to undertake a field trip to familiarise themselves with the Tenure Review process

Progress:

The Port Hills fires coincided with the field trip which was cancelled. The Board held a workshop on the Tenure Review process in association with members from the Departments Tenure Review Team and representatives from LINZ.

C Board to advocate where they can with interest groups on any of the above topics

Progress:

The Board continues to advocate where they can with interest groups.

7 Working with adjoining Boards and the NZCA

Board Objective:

Board members will liaise with neighbouring conservation boards in order to progress cross boundary CMS issues and other matters of mutual interest

Planned Board Activities

A The Board's liaison member for neighbouring Conservation Boards will continue to actively follow minutes and any identified common issues

Progress:

The Board's Deputy Chair actively follows the minutes for neighbouring Conservation Boards and reports back to each meeting on any shared issues.

B Board Chair to attend relevant regional meetings of Board Chairs so cross boundary CMS and other issues can be progressed

Progress:

The Board Chair attended the following:

- Regional meeting with the South Island Board Chairs
- National Conference for Board Chairs in Wellington

8 Understanding the Board's contribution to giving effect to the principles of the Treaty of Waitangi

Board Objective:

The Board will understand and support the Board's and Department's obligations under Treaty settlements as well as principles under Section 4 of the Conservation Act

Planned Board Activities, Success Measures and Key Milestones

- The Board will actively support Ngāi Tahu involvement in all facets of the Aoraki Mount Cook National Park Management Plan Review
- A** Cook National Park Management Plan Review

Progress:

Board members regularly attend workshops in conjunction with the Department's Operations staff, Te Runanga o Ngāi Tahu and the kaitiaki runanga to discuss the Aoraki Mount Cook National Park Management Plan Review.

- B** Iwi committee members to ensure TRONT and runaka are briefed and consulted on matters that the Board deem appropriate

Progress:

Iwi Committee members meet regularly with TRoNT.

- C** Iwi committee members to report back at each Board meeting on liaison and any issues that the Board should be aware of

Progress:

Iwi committee members report back to Board meetings on a regular basis.

- D** The Board will seek to have at least one meeting each year at a marae

Progress:

Meetings held at TRoNT office, Christchurch, and marae within the region.

9 Engaging with the community, including raising the profile of the Board

9.1 Board Objective

Board members will liaise regularly with other conservation entities, such as district and regional councils, NGOs, and community groups, in order to enhance the profile of the Board and pursue good working relationships on issues of mutual interest and concern

Planned Board Activities, Success Measures and Key Milestones

- A** Board members actively engage with district and regional councils, NGOs and community groups on matters that relate to the successful implementation of the CMS policies and also the review of the Aoraki Mount Cook National Park Management Plan

Progress:

Board members continue to engage with other conservation entities as per their liaison roles.

9.2 Board Objective:

Board members will take the initiative to meet with community groups and the general public to gauge community reaction to conservation initiatives planned or implemented by DOC

Planned Board Activities

- A** The Board will partner with the Department to again host a high profile annual event in November 2017 to acknowledge and celebrate efforts by conservation, recreation, school and industry groups to further conservation values and outcomes in the Canterbury Aoraki rohe

Progress:

The Board revamped its awards process and format, culminating in the annual Canterbury Aoraki Conservation Board Awards "Te Waka o Aoraki" being presented in October. Over 20 entries were received.

- B** Board members will participate in public consultation and public submission processes related to the review of the Aoraki Mount Cook National Park Management Plan

Progress:

Board members participated in public consultation in relation to the review of the Aoraki Mount Cook National Park Management Plan Review including public meetings in Twizel.

PART C: RISKS AND OPPORTUNITIES

10 Risks from the Board's perspective

- A** That the public in general does not yet have sufficient knowledge of what the role and activities of Conservation Boards are, and what they stand for

- B** That the Board and/or the department does not effectively prioritise its activities, outcomes, and resources

11 Opportunities for conservation growth

- A** The Board continues with its annual awards to acknowledge excellence, breadth, and range of conservation work, being done in conservation, education, and communities of interest in the Canterbury rohe

Progress:

The Board held their annual Canterbury Aoraki Conservation Board Awards “Te Waka o Aoraki” in October 2016.

- B** Board members to actively engage with recreational groups to encourage a greater sense of involvement of their rohe and encourage relevant groups to either adopt either a hut or track, or a particular area in which they can make a difference (e.g. trapping etc)

Progress:

Board members continue to actively engage with recreational groups through their liaison roles.

CANTERBURY AORAKI CONSERVATION BOARD 2016 FOCUS MILESTONES (FROM 2016-26 CMS)

1	1.4 Treaty partnership with Ngāi Tahu ❖ Agreed systems and processes to monitor and measure Treaty engagement and satisfaction of Ngāi Tahu with Department activities. (By Year 3)
2	1.5.1 Natural Heritage ❖ A baseline report assessing the condition of priority ecosystem units. (By Year 3)
3	1.5.1 Natural Heritage ❖ Sustained control of wilding trees within the high country in accordance with the New Zealand Wilding Conifer Management Strategy 2015-2030. (By Year 5)
4	1.5.2 Historic and Cultural Heritage ❖ A baseline report assessing the condition of actively conserved historic places listed in Appendix 10 that are stable and not deteriorating, and including the identification of relevant community partnerships. (By Year 3)
5	1.5.3 Recreation ❖ A baseline report assessing the number and condition of huts, tracks and other visitor facility structures, the numbers and the satisfaction of people using them, and the opportunities for recreational groups to assist in their management and retention. (By Year 3)
6	1.5.3 Recreation ❖ An increase in the number of huts and tracks that have recreational groups assisting in their management and retention. (By Year 5)
7	2.1 National Parks Place ❖ Completion of review of Aoraki/Mount Cook National Park Management Plan. (By Year 3)
8	2.3 Northern High-Country Place ❖ Land status review for all public conservation lands and waters within the Place, including the St James Conservation Area. (By Year 3)
9	2.3 Northern High-Country Place ❖ Resolution of the boundaries and statutory provisions for an area where recreational hunting will be given priority for wild animal control. (By Year 3)
10	2.4 High-Country Basins Place ❖ Monitoring results of visitor use and impacts on natural, historic and Ngāi Tahu cultural values at Kura Tāwhiti Scenic Reserve. (By Year 5)
11	2.6 Braided Rivers / Ki Uta Ki Tai Place ❖ World Heritage Area or Wetland of International Importance achieved for at least one Canterbury braided river. (By Year 10)



Office of Hon Nicky Wagner

MP for Christchurch Central
Minister of Customs
Minister for Disability Issues

Associate Minister supporting Greater Christchurch Regeneration
Associate Minister of Conservation

Board paper NOV 2016 - 8
For board meeting of 22/11/16

17 AUG 2016

Dr Mick Abbott
Chair, Canterbury Aoraki Conservation Board
PO Box 5
AORAKI/ MOUNT COOK 7946

Dear Mick

Annual Letter of Expectation: Canterbury Aoraki Conservation Board 2016/17

First of all I congratulate members of your Board who have been newly appointed or reappointed. I would also like to thank you and all your Board members for accepting the responsibility to be conservation leaders within your community. I look forward to the year ahead and working with you to make a difference for the conservation of our natural and historic heritage.

This is my third annual Letter of Expectation for Conservation Boards. The purpose of this letter is to be clear about my expectations of your Board and to set out a framework for success within which both the Department and your Board can operate.

As with my letter in 2015, the basis for my expectations originate in the statutory functions set out in Section 6M of the Conservation Act 1987, the National Parks Act 1980 and the Reserves Act 1977. As reflected in these statutes, the Board's focus is on policy issues, strategic direction and planning, not in the day to day operational details of the Department of Conservation.

Code of Practice for Conservation Boards

The Code of Practice for Conservation Boards is available online: www.conservationboards.org.nz under "Role of Conservation Boards". I encourage you and your Board to use the Code of Practice as a standard reference document for your meetings and activities. I also encourage you to pursue opportunities to get the most out of your Board through appropriate induction or training, to enable you to ensure that you can fulfil your statutory role.

Working with the Department of Conservation

The Department is focused on working with others to achieve more for conservation. This provides the opportunity to align with the conservation leadership role that you play within your local communities.

This focus provides clear opportunities and challenges for Boards. I expect the Operations Director for your region to maintain a strong working relationship with you so that your Board can provide strategic advice to the Department on conservation for your region. A measure of success for this relationship will be to have your Board operating at the level of advising on governance, which results in the Department receiving advice it could not get from any other stakeholder, advocacy group or external source. I hope that you will be able to report about what is working well for you and the Department and areas for improvement, so that we can share lessons and best practice across all Boards.

Private Bag 18041, Parliament Buildings, Wellington 6160, New Zealand. Telephone 64 4 817 6840 Facsimile 64 4 817 6540

Government and Ministerial Priorities

The Department of Conservation's Four-year Plan sets out Government and Ministerial priorities for the Department. The Department consulted with you in May to seek your views on your proposed priorities for your region. To help you identify those priorities, the Department asked you to consider the current priorities on page 17 of the Four-year Plan 2015, which can be found at <http://www.doc.govt.nz/Documents/about-doc/four-year-plan/doc-four-year-plan-2015.pdf>

The Department asked you to provide information about how your proposed priorities will contribute to delivering on the stretch goals or Board's statutory functions.

My expectation is that you will design your annual programme of work to reflect the priorities contained in the Four-year Plan and the additional priorities you identified for your region.

Your relevant Operations Director will discuss these priorities with you over the course of the year, as well as update you about any new or amended Government and Ministerial priorities that are established through the 2016 Four-year Plan, which is yet to be released.

Your Community

As Board members you will need to be active in your communities and bring a strong, well informed community voice to the table to meet your statutory obligations. It is likely that you have all been promoted onto your Board because of the individual role you have played with conservation stakeholders in your community. I encourage all of you to go beyond your traditional sectors of support and hear views across the range of communities in your region, so that as a Board you can offer a single representative voice on behalf of your community in regards to conservation. This includes understanding your contribution to giving effect to the Treaty of Waitangi under section 4 of the Conservation Act. You can count on the support of the Department and your iwi representatives to bring that commitment into your thinking as a Board.

The NZCA has advised that it would like to see the Boards become far more visible in the role they play in conservation in their regions and with their communities. The NZCA would endorse any priority that the Boards could place on connecting with the Department's communications and engagement work. I support this suggestion.

I also have a long-term goal to get youth more actively engaged in conservation and I would encourage you to think of new and innovative ways to connect with this section of your community.

Working with adjoining Boards and the NZCA

Working with conservation issues and management strategies will frequently involve working across boundaries with other Conservation Boards. I encourage you to continue to develop effective ways of working across boundaries to encourage consistency and avoid duplication.

The New Zealand Conservation Authority (NZCA) is a source of support for Conservation Boards to draw upon in relation to the national and policy context for conservation issues.

I look forward to hearing how these relationships are supporting you in your work and to receiving a copy of your Annual Report to the NZCA for the 2015/16 year ending 30 June.

Profile

I challenge both you and the Department to work towards raising the profile of the Board within your region and emphasising the role you play in achieving enhanced conservation outcomes for the benefit of your community.

Regional Work Programme and Monitoring

I have attached to this letter a suggested programme of work for your Board that includes the priorities you identified for your region. The Department presented the priorities identified by each Board to the NZCA at its meeting on 8 June and the Authority proposed additional priorities for Conservation Boards for the 2016/17 year. These priorities have been

incorporated in this letter and the suggested programme of work. I encourage you to discuss your priorities with your Board, your NZCA liaison representative and your regional Operations Director.

I would really appreciate you completing and returning a finalised work programme to me by ~~9th September~~ ^{9th September}. Please send this care of Mike Slater, Deputy Director-General Operations. The Department has developed a template for this work programme (attached) to help build a national picture of the programme of work to be led by Conservation Boards.

My expectation is that you, with your regional Operations Director, will settle performance indicators and develop systems and tools that will enable you to monitor and measure progress. I request that your finalised work programme include measures and milestones designed to demonstrate what success will look like for each priority and how your Board will be able to show progress against the relevant Departmental stretch goal. You will be able to draw upon the support of your regional Operations Director, new Statutory Manager and regionally aligned Pou Tairangahau to build these tools.

I expect your Board to report against these priority success measures and milestones in its annual report to the NZCA at the end of June 2017.

I look forward to hearing about the conservation outcomes that result.

Yours sincerely



Hon Nicky Wagner
Associate Minister of Conservation

