

---

# CANTERBURY AORAKI CONSERVATION BOARD

---

## Annual Report

1 July 2022 to 30 June 2023



*Presented to the New Zealand Conservation Authority / Te Pou Atawhai Taiao O Aotearoa  
pursuant to Section 60 of the Conservation Act 1987*

Annual Report of the  
Canterbury Aoraki Conservation Board  
Te Rūnanga Papa Atawhai o Waitaha me Aoraki

For the period 1 July 2022 – 30 June 2023

*Presented to the New Zealand Conservation Authority  
pursuant to Section 6(O) of the Conservation Act 1987*

*Cover photo: Kura Tāwhiti Conservation Area  
Image: (M-L Grandiek)*

*Published by*  
Canterbury Aoraki Conservation Board  
c/- Department of Conservation  
Private Bag 4715  
Christchurch Mail Centre  
Christchurch, 8140  
[canterburyaorakiboard@doc.govt.nz](mailto:canterburyaorakiboard@doc.govt.nz)

ISSN 1179-2469 (print)  
DOC-7397475

# CONTENTS

1.	<b>Chairperson’s Report</b>
2.	<b>Introduction</b>
3.	<b>Annual Work Plan 2022- 2023</b>
4.	<b>Rohe</b>
5.	<b>Board Functions</b> 5.1 Board Functions under Section 6M of the Conservation Act 1987 5.2 Powers of the Board under Section 6N of the Conservation Act 1987 5.3 Board Functions under the National Parks Act 1980 5.4 Membership 5.5 Members Profiles 5.6 Meetings 5.7 Attendance 5.8 Field Trips 5.9 Special Events 5.10 Department of Conservation Involvement - Board Meetings
6.	<b>Statutory Activity</b> 6.1 Canterbury (Waitaha) 2016 Conservation Management Strategy 6.2 Management Plans
7.	<b>Advocacy</b> 7.1 Board Liaisons 7.2 Advice to the Department of Conservation 7.3 Community Advocacy and Involvements 7.4 Community Visibility 7.5 Fees and Allowances
8.	<b>Appendix 1 – Minister of Conservation Letter Expectations</b>
9.	<b>Appendix 11 – Annual Work Plan 2022- 2023</b>



## 1) Chairperson's Report



### *Whakamihī/ Thanks*

The 2022-23 year has been another busy one for the Canterbury Aoraki Conservation Board/Te Rūnanga Papa Atawhai o Waitaha me Aoraki. But before reflecting on key achievements and challenges, I would like to start by acknowledging the passion and dedication of our team. We have a fantastic group of people, with a diverse range of skills, all of whom are focused on making a difference and improving conservation outcomes. Thank-you all for your enthusiasm and hard work. I also want to acknowledge Marie-Louise Grandiek, our Board Support Officer. The knowledge and expertise Marie-Louise holds enables our Board to work efficiently and effectively, so thank-you Marie-Louise for your guidance again this year. Ki Kopa Lee, tō mātou Pou, ngā mihi nui ki a koe mō tō mātauranga me tō ārahi. Thanks to Jo McPherson, Janine Sidery, Kingsley Timpson, all the Eastern South Island leadership team, and to the wider DOC whānau. By our collective hard-work and enthusiasm will we ensure Papatūānuku Thrives – ngā mihi nui ki a koutou.

The cyclic nature of Board member tenure also means that we once again had to say farewells to some awesome conservationists. To Eila Gendig, Jane Demeter and Euan Brook, we were sorry to see your terms come to an end, but truly valued your many and varied contributions to our Board. Eila, thanks for your leadership throughout the year. To Joshua Neville, you were a powerhouse of work, and it was with much regret that had to accept your resignation. This event highlighted the ongoing juggling act Board members have trying to balance jobs, families, and a vast array of other life commitments with the time-demands of being an effective Board member. We all do it because we care, but we need to remain mindful to also take care of ourselves and each other too.

At the start of this Board-year we had not long welcomed Hon. Poto Williams as Minister of Conservation, enjoying her company at our annual Board Awards in November 2022. In February, the Conservation portfolio was passed to Hon. Willow-Jean Williams. Our Board looks forward working with Willow-Jean in the year ahead.

### *Whakatutuki/Achievements*

It was another busy year on the permission/submission front, with our team providing feedback on a total of 19 applications, raising conservation issues on a diverse range of activities from gravel extraction to backcountry infrastructure. A particular highlight was the withdrawal of an application by Wongan Hills Limited to operate composting barns/feedlots in Kaituna Valley – a positive outcome for conservation, avoiding undesirable impacts to species and taonga.

Another successful year for DOC's captive breeding programmes was celebrated by Board members as more kākāriki karaka, whio and kakī were returned to the ngahere (forests) and awa (rivers) where they belong. The Isaac Conservation and Wildlife Trust is a key partner to these programmes and also a key sponsor of our Boards Annual Conservation Awards evening. Our Awards night is always a highlight, and this year was not exception, with over 100 attendees. Much effort goes in to hosting these awards, but they are an excellent portal for community connection. We take great pleasure learning about the many and diverse voluntary conservation efforts in our rohe. This year the winner of Te Waka o Aoraki Conservation Award was the Banks Peninsula Conservation Trust – ngā mihi nui.

This year our Board took positive steps towards our objective to *“Facilitate the involvement of mana whenua on field trips to enable mana whenua perspectives to be included in activities.”* Board members attended the opening Kura Tawhiti, noting how fantastic it was that the redevelopment of this site was led by Ngā Tūāhuriri and therefore centred on iwi aspirations and mātauranga Māori. Our February meeting was a joint meeting with our neighbours of the Nelson Marlborough Board in the spectacular location of Kaikōura. Our cultural tour of the Kaikōura coastline hosted by Ngāti Kuri was a real highlight, during which we learnt about the whakapapa and connections to ngā taonga me te whenua. In our own takiwā, we were hosted by Arowhenua Rūnanga, with a pōwhiri at the marae, visit to their commercial nursery, and a tour of a key rock-art site. Ensuring involvement of mana whenua on field trips truly enriches the experience, and we look forward to learning more this coming year.

#### *Taunahua/Challenges*

Perhaps the most significant frustration of our Board this year was our not be able to see substantial progress on a revised Aoraki Mount Cook National Park Plan. In February 2023 the Board moved to cease participation in any workshops in relation to the plan review due to concerns about the level of communication and consultation between Department staff and mana whenua. We know work is ongoing in this space and look forward to reengaging with the process when these issues have been resolved. Similar frustration was also encountered around the lack of progress on the development of a proposed Te Waihora Joint Management Plan and management of Te Waihora more generally.

On the biodiversity front, the loss of funding for DOC for operation activities is an ongoing concern of our Board. Our Board acknowledges the additional pressures that the string of extreme weather events has put on DOC staff nationwide. However, we are particularly concerned about the continual decrease in spending on weed control, especially wilding conifer control. Our Board expressed these concerns in a letter to the Minister, and we have also reached out to mana whenua and neighbouring Boards as we feel this issue is substantive and extends well beyond our own takiwā.

*Nau mai te tau ake / Looking forward...*

At the beginning of this year our Board undertook a reorganisation of our subcommittees with an aspiration that in addition to our statutory work, members also engaged in relevant (and current) issues with which they were passionate. These focus groups included: Iwi Vision for Public Conservation Land and Waters; Braided Rivers; Weed Management; Marine Protection; and Backcountry Recreation Assets and Access. We also unanimously agreed that Climate Change has implications to all aspects of conservation, and so work to consider this across all our work programmes. Looking ahead to the coming year, we as a Board look forward to learning, engaging, and helping to drive positive outcomes for conversation in Aotearoa.

Ngā mihi nui

A handwritten signature in black ink that reads "Heather Purdie". The signature is written in a cursive, flowing style.

Dr Heather Purdie  
Chairperson, Canterbury Aoraki Conservation Board

## 2) Introduction

This is the 25<sup>th</sup> Canterbury Aoraki Conservation Board Annual Report. Section 6(O) of the Conservation Act requires conservation boards to provide the New Zealand Conservation Authority (the Authority) with an annual report as soon as practical after 30 June each year. In recognition of this requirement the Canterbury Aoraki Conservation Board (the Board) submits this annual report.

Conservation Boards are appointed by the Minister of Conservation under section 6(P) of the Conservation Act 1987 (the Act). Board functions are outlined in Section 6(M) and the powers, which enable the Conservation Boards to carry out these functions, are under Section 6(N) of the Act.

The Canterbury Aoraki Conservation Board had 12 members for the 2022-2023 year appointed by the Minister of Conservation under the terms of the Conservation Act 1987. Of these 12 members, 1 resigned in March 2023.

Conservation boards are independent advisory bodies, established by statute. They represent the community and offer interaction between communities and the Department of Conservation (the Department), within their area of jurisdiction.

The Board has several statutory roles under various Acts, including:

- the recommendation of the Canterbury (Waitaha) Conservation Management Strategy (CMS) to the Authority for approval
- advising the Department and the Authority on how conservation management strategies and plans will be put into practice.
- reporting on the implementation of the CMS
- the approval of Conservation Management Plans
- the recommendation of National Park Management Plans to the Authority for approval
- advising the Department and Authority on conservation matters, and proposed changes to status of land of national and international significance
- liaising with the Fish and Game Council on conservation matters
- carrying out other powers delegated by the Minister of Conservation, the Conservation Act or any other Act.

Conservation boards also have several functions under section 30 of the National Parks Act 1980. These functions include recommending the review or amendment of National Park Management Plans and recommending approval of these plans by the Authority.

## 3) Annual Work Plan

Refer to Appendix II for the full Board Annual Work Programme.



## 4) Rohe

The Canterbury Aoraki Conservation Board's area of jurisdiction covers the area of 5,201,723.07 hectares.

The jurisdiction extends from the Conway and Clarence Rivers in the north and west to the main divide, including all of Arthur's Pass and Aoraki Mount Cook National Parks. The southern boundary is the catchment of the Waitaki River at Kurow, along the river to the east coast. The area also extends out to the 12-nautical mile limit with respect to coastal and marine issues, and out to the 200-nautical mile limit with respect to protected species.

Approximately 14.6% of New Zealand's public conservation land area lie within the Board's jurisdiction. Public conservation land and areas make up 48% of all land in Canterbury Aoraki. This consists of:

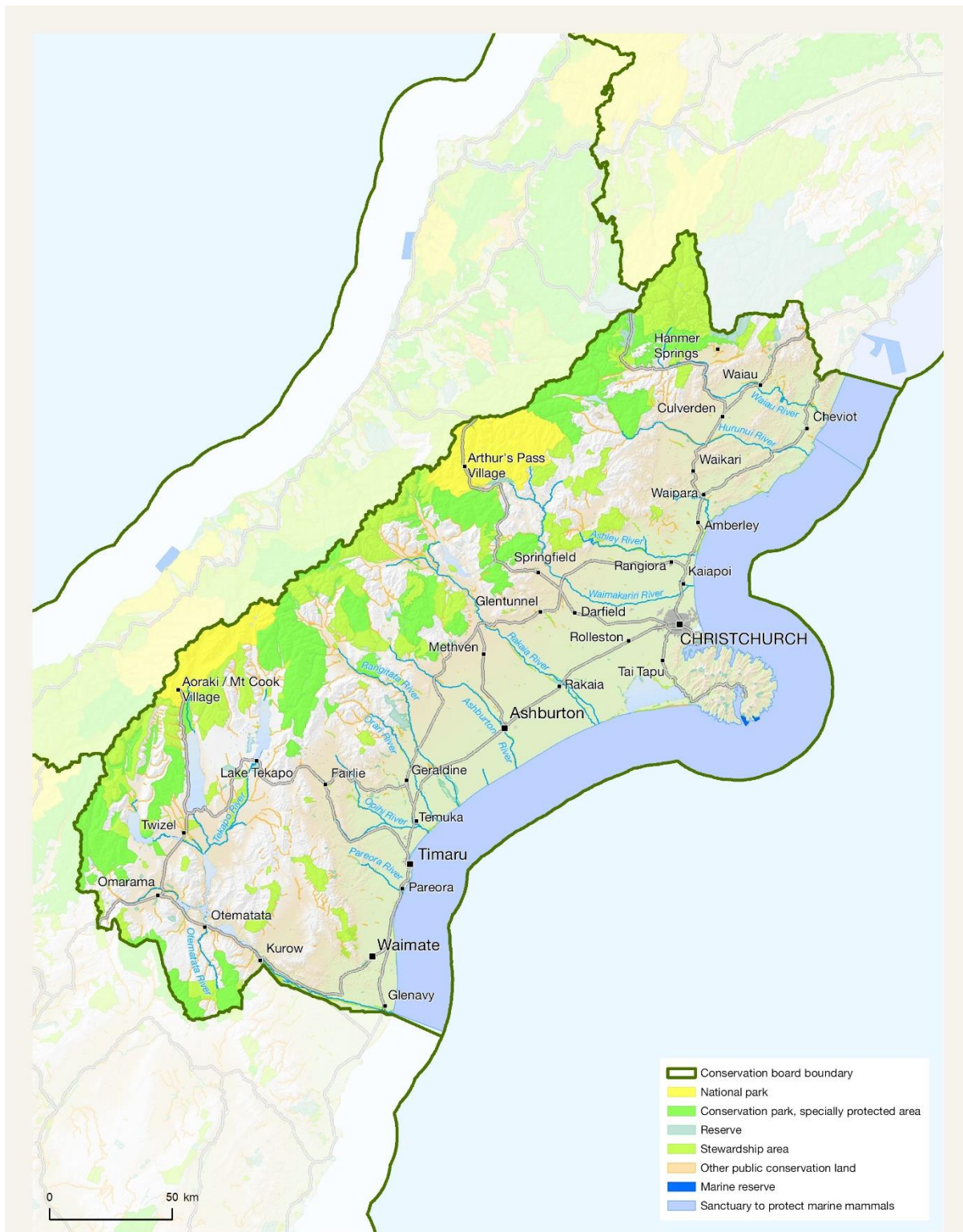
- 1,153,494.95 hectares of Public Conservation Land
- 951,420.13 hectares of Sanctuaries to Protect Marine Mammals
- 745.35 hectares of Marine Reserves

### Conservation features of the area

The main features of Public Conservation Land and Waters within the Board's boundaries are:

- Arthur's Pass National Park - 118,522.21 ha
- Aoraki/Mount Cook National Park - 72,147.90 ha.
- Nelson Lakes National Park - 6.53 ha
- Ahuriri Conservation Park - 47,887.36 ha
- Craigieburn Forest Park - 44,683.03 ha
- Hakatere Conservation Park - 59,582.41 ha
- Hanmer Forest Park - 11,777.03 ha
- Hawea Conservation Park - 1,704.99 ha
- Ka Whata Tu o Rakihouia Conservation Park - 41.84 ha
- Korowai/Torlesse Tussocklands Park - 23,991.15 ha
- Lake Sumner (Hoka Kura) Forest Park - 105,029.06 ha
- Oteake Conservation Park - 33,757.70 ha
- Ruataniwha Conservation Park - 37,094.69
- Te Kahui Kaupeka Conservation Park - 93,081.71 ha
  
- 105 Scenic Reserves - 22,908.42ha
- 9 Historic Reserves - 21.58 ha
- 36 Recreation Reserves - 5,930.55 ha
- 437 Stewardship Areas - 443,879.82 ha
- 583 Marginal Strips - 9,368.07 ha
- 4 Specially Protected Areas - 6,588.37 ha
- Wilderness Areas - 7,171.25 ha
- 2 Sanctuaries to protect Marine Mammals - 951,420.13 ha.
- 2 Marine Reserves - 746.35 ha

Figure 1: Canterbury Aoraki Conservation Board Jurisdiction



## 5) Board Functions

The Canterbury Aoraki Conservation Board has a statutory obligation to fulfil Section 4 of the Conservation Act 1987 viz: *“This Act shall so be interpreted and administered to give effect to the principles of the Treaty of Waitangi”*.

- Section 4 is a powerful and fundamental provision, requiring more than procedural steps and must be considered in light of other extrinsic aids.
- Other statutory objectives must be achieved to the extent they are consistent with Section 4.

### 5.1 Board functions under Section 6M of the Conservation Act 1987

The functions of the Board are:

- 1) To recommend the approval by the Authority of conservation management strategies, and the review and amendment of such strategies, under the relevant enactments
- 2) To approve conservation management plans, and the review and amendment of such plans, under the relevant enactments
- 3) To advise the Authority and the Director-General of the Department, on the implementation of conservation management strategies and conservation management plans for the area within the jurisdiction of the Board
- 4) To advise the Authority or the Director-General of the Department:
  - a) On any proposed change of status or classification of any area of national or international importance; and
  - b) On any other conservation matter relating to any area within the jurisdiction of the Board
- 5) To liaise with any Fish & Game Council on matters within the jurisdiction of the Board
- 6) To exercise such powers and functions as may be delegated to it by the Minister under this Act or any other Act.

### 5.2 Powers of the Board under Section 6N of the Conservation Act 1987

- 1) Every Conservation Board shall all such powers as are reasonably necessary or expedient to enable it to carry out its functions.
- 2) Without limited the generality of subsection (1), each Conservation Board may:
  - a) Advocate its interests at any public forum or in any statutory planning process; and
  - b) Appoint committees of members and other suitable persons, and delegate to them functions and powers.
- 3) The power conferred by subsection (2) a) shall include the right to appear before courts and tribunals in New Zealand and be heard on matters affecting or relating to the Board's functions.

### 5.3 Board functions under Section 30 of the National Parks Act 1980

There are two national parks within the Board's regional: Arthur's Pass National Park and Aoraki Mount Cook National Park. The Board's functions under the National Parks Act 1980 are:

- 1) To recommend management plans, and the review or amendment of such plans, for parks within the jurisdiction of the Board in accordance with Sections 45 to 47
- 2) To consider and determine priorities for the implementation of management plans for national parks.
- 3) To make recommendations to the Minister for the appointment of honorary rangers under Section 40
- 4) To review and report to the Director-General of the Department or the Authority, as appropriate, on the effectiveness of the administration of the General Policies for National Parks within the jurisdiction of the Board.
- 5) To give advice to the Director-General of the Department or the Authority:
  - i. on the interpretation of any management plan for a park, and
  - ii. on any proposal for the addition of land to any national park or the establishment of a new national park, and
  - iii. on any other matter relating to any national park, within the jurisdiction of the Board.

### 5.4 Membership

There were 12 Board members for the reporting year appointed by the Minister of Conservation. The following table lists the members of the Canterbury Aoraki Conservation Board between 1 July 2022 and 30 June 2023.

*Table I: Board membership*

Board Member	Area	Term Start	Term End
Courtney Bennett	Christchurch	01/07/22	30/06/25
Euan Brook	Christchurch	01/07/20	30/06/23
Jane Demeter	Christchurch	01/07/20	30/06/23
Eila Gendig	Christchurch	01/07/20	30/06/23
Joseph Hullen*	Kaiapoi	01/09/07	30/06/25
Distinguished Professor Philip Hulme	Lincoln	01/07/21	30/06/25
Michael McMillan*	Temuka	01/07/20	30/06/23
Josh Neville	Christchurch	01/07/18	30/06/24
Dr Heather Purdie	Canterbury	01/07/18	30/06/24
Rachel Robilliard*	Canterbury	01/07/19	30/06/25
Richard Suggate	Banks Peninsula	01/07/22	30/06/25
Puawai Swindells-Wallace*	Christchurch	01/07/21	30/06/24

\*Denotes Te Rūnanga o Ngāi Tahu appointee

## 5.5 Members profiles

### Dr Heather Purdie of Canterbury (Chairperson)

Dr Purdie is an Associate Professor at the University of Canterbury, who specialises in Physical Geography and Glaciology. Heather has 14 years' experience in conducting research into New Zealand glaciers and their response to climate change, and the implications of environmental change to commercial tourism concessions and recreational activities on conservation land. She is also a scientific advisor for the DOC Learning Experiences Outside the Classroom (LEOTC) programme at Aoraki Mount Cook.

### Michael McMillan of Temuka (Deputy Chairperson)

Michael is of Te Rapuwai, Hawea, Waitaha, Ngāti Māmoe, Ngāi Tahu, Ngāti Huirapa, and Te Ruahikihiki descent and was nominated by Te Rūnanga o Ngāi Tahu. He is a cultural consultant, with a background in construction. He has knowledge of RMA, resource consents, conservation acts, district plan reviews, iwi management plan development, cultural impact assessments, farm auditing, and restoration projects. He has excellent communication, consulting with both private and government agencies.

### Courtney Bennett of Christchurch

Courtney's background is in environmental and strategic planning. She runs a planning consultancy that specialises in policy and plan-writing, community engagement, and research; and has previously worked on national park-related projects in a technical capacity. Courtney has also published several academic articles focusing on best practice mana whenua engagement methodologies and incorporating Māori worldviews and mātauranga into planning processes.

### Euan Brook

Euan holds a BEng (Hons) in Chemical Process Engineering from Canterbury University and is a qualified project manager working for Goodman Fielder Meadow Fresh in Christchurch. He is an outdoor enthusiast, devoting any free time from his young family to backcountry tramping, hunting, diving and photography. Currently following a passion and undertaking research on geckos in the central Canterbury High Country.

### Jane Demeter

Jane has been involved in resource management in Canterbury at both governance, education, and community representation levels, with a current focus on land and water management. Her experience in offshore healthcare software development has given her a broad business background. Her involvement in community groups currently focuses on environmental awareness, advocacy, education, and predator trapping.

### **Eila Gendig**

Isla has been working on environmental and natural resource management topics for most of her career. She has extensive experience with conservation issues and government processes. She has an academic background in molecular biology, natural resources management and soil conservation. In her spare time, Isla loves to spend time outdoors with her family.

### **Joseph Hullen**

Joseph is of Ngāi Tahu descent and was nominated by Te Rūnanga o Ngāi Tahu. He has skills in environmental management and advocacy, is a mahinga kai practitioner and provides strong cultural awareness. He is currently employed as a whakapapa researcher for Te Rūnanga o Ngāi Tahu.

### **Distinguished Professor Philip Hulme**

Distinguished Professor Hulme is an experienced biosecurity academic. He has served on Biosecurity Advisory Committees for the UK and New Zealand governments, as well as Environment Canterbury. He has an excellent understanding of data and statistics, the ability to make evidence-based decisions, knowledge of the research landscape that supports conservation activities in New Zealand, and a sound understanding of governance best practice.

### **Rachel Robilliard**

Rachel is of Ngāi Tahu, Ngāi Te Ruahikihiki, and Te Taumutu Rūnanga descent and was nominated by Te Rūnanga o Ngāi Tahu. She has a legal background with a focus on environmental, planning and natural resources law. She has experience advising on legal and compliance requirements for a range of environmental and resource management matters. She is also a member of the Kaitiakitanga Portfolio for Te Taumutu Rūnanga.

### **Richard Suggate**

After a 30-year career working for Te Papa Atawhai (Department of Conservation) across Canterbury and other locations, Richard brings to the Board a wide understanding of biodiversity, recreation and conservation operations. During his career, he established relationships with Canterbury papatipu rūnanga and many local groups. Richard is currently a member of a number of conservation, recreation and community organisations including co-chairing the Rod Donald Banks Peninsula Trust.

### **Puawai Swindells-Wallace**

Puawai is of Ngā Puhi, Ngāti Whātua ki Kaipara, Waikato-Tainui, Ngāti Kahungunu ki Wairarapa, Waitaha, Kāti Mamoe, and Ngāi Tahu descent and was nominated by Te Rūnanga o Ngāi Tahu. She has experience in conservation operations, is an active advocate and member of her hapū and wider community, has a high level of cultural awareness, and is skilled in networking, advocacy, and bicultural communication.

### **Resignations during the year**

#### **Joshua Neville of Christchurch**

*Appointment Term: 1 July 2019 – 30 June 2025 (Resignation 15/03/23)*

## 5.6 Meetings

The Board held six Board meetings during the reporting period. Venues for the meetings vary each year to ensure a wide coverage and enable members of the public in the district to attend meetings and access the Board.

*Table II: Board meeting dates and locations*

Date	Area
4 August 2022	Rangiora
20 October 2022	Christchurch
8 December 2022	Christchurch
10 February 2023	Rangiora
5 April 2023	Kaikōura
30 May 2023	Twizel

## 5.7 Attendance

The table below summarises the Board meetings, workshops and field trips attended by members during the year. Members attended additional meetings and events, including subcommittee meetings, representative and liaison roles.

*Table III: Board member attendance*

Board Member	Board Meetings	Field Trips	Workshops
Courtney Bennett	3/6	2/3	6/7
Euan Brook	3/6	0/3	4/7
Jane Demeter	5/6	3/3	6/7
Eila Gendig	6/6	3/3	7/7
Joseph Hullen	2/6	1/3	2/7
Distinguished Professor Philip Hulme	6/6	2/3	6/7
Michael McMillan	5/6	3/3	7/7
Joshua Neville*	3/4	1/1	3/5
Dr Heather Purdie	5/6	2/3	4/7
Rachel Robilliard	6/6	3/3	4/7
Richard Suggate	6/6	2/3	6/7
Puawai Swindells-Wallace	4/6	3/3	4/7

\* Joshua Neville resigned from the Board effective 15 March 2023

## 5.8 Field Trips

Field trips are an excellent opportunity for Board members to become more aware of conservation issues within their region.

*Table IV: Field Trips*

Date	Field Trip Destination
19 October 2023	Kura Tāwhiti
4 April 2023	Kaikōura
29 May 2023	South Canterbury/Mackenzie Basin

### Kura Tāwhiti

Prior to the field trip, the Board received presentations from Departmental staff on the Upper Waimakariri River Weed Control Strategy and the Kea Recovery Programme.

The Board visited the Kura Tāwhiti Conservation Area and viewed the significant upgrading at site, including the installation of pou whenua, information panels, construction of a new loop track, native plantings, new shelters and new picnic tables.



Pou Whenua, Kura Tāwhiti  
(Image: C Bennett)



Castle Hill Buttercup (*Ranunculus paucifolius*)  
(Image: C Bennett)



The Board was briefed on the status of Kura Tāwhiti as Tōpuni – publicly recognising Ngāi Tahu mana and rangatiratanga over this culturally significant site on public conservation land, and ensuring that Ngāi Tahu values are recognised, acknowledged and provided for. The Lance McCaskill Nature Reserve was also visited by the Board – the first reserve in New Zealand established specifically to protect a plant – the Castle Hill buttercup (*Ranunculus paucifolius*). This reserve has important scientific value as the longest running plant-monitoring project in New Zealand.

## Kaikōura

The Board, in conjunction with the Nelson Marlborough Conservation Board, undertook a cultural tour of Kaikōura. Several pou sites were visited and the Board members were briefed throughout the tour on:

- Ngāti Kuri – hapu in the Kaikōura area, enabling the Board members to gain an understanding of the unique culture, history, occupation and traditions in the area.
- Kaikōura canyon, southern branch of the Hikurangi Trench – a biodiversity ‘hotspot’ with upwelling of currents from the deep ocean providing feeding grounds for a diverse range of seabirds and marine mammals.
- Hikurangi Marine Reserve, established in 2014, the largest and deepest marine reserve adjacent to any part of the mainland in New Zealand
- Kaikōura Whale Sanctuary, established in 2014, the Te Rohe o Te Whānau Puha Whale Sanctuary covers 4,686 kms and provided additional protection for marine mammals.
- Kaikōura earthquake. A 7.8 magnitude earthquake which struck on 14 November 2016, significantly altering the landscape.



Pou – north of Kaikōura  
(Image: M-L Grandiek)



Okiwi Bay, Kaikōura  
(Image: M-L Grandiek)

## South Canterbury/Mackenzie Basin

The focus of the field trip was to visit various sites within the Board's southern rohe, to confirm, recognise and korero the relationship between manawhenua, the Department and external stakeholders/partners.

An integral part of the day was the powhiri at Arowhenua marae in Temuka. Sites visited included:

- Arowhenua Native Nursery, Temuka
- Taniwha rock art site, Taniwha Gully (near Pleasant Point)
- Lake Tekapo/Takapō Regional Park
- Kakī Aviary, Twizel



Young kakī/black stilt (*Himantopus novaezelandiae*)  
(Image: M-L Grandiek)

## 5.9 Special Events

The Canterbury Aoraki Conservation Board awards are held annually to recognise and encourage conservation efforts and achievements in Canterbury. The Board awards the 'Te Waka o Aoraki' trophy to a person or group of people who have nominated themselves to be considered for the award. The 2022 Awards were sponsored by The Isaac Wildlife and Conservation Trust.

The 2022 winner was Banks Peninsula Conservation Trust. The work of the Trust and their 2050 Ecological Vision for Banks Peninsula (including the Port Hills), impressed on the Board the measurable difference the Trust has and will have on conservation outcomes for Canterbury. In particular, protecting the taonga of Te Pātaka o Rākaihautū (Banks Peninsula). The work of the Trust is underpinned by a community-led approach, effective collaboration between interested parties, and good science.

Glentanner Park (Mt Cook) Ltd sponsored the Schools Conservation Award, which was awarded to Te Kura o Matai Rangatira – Glentunnel School.

The ‘Spark a New Idea 2022’ Award went to Haere Mai ki Waho Nature Education.



Te Waka o Aoraki Winners 2022

Image: (J Neville)

#### 5.10 Department of Conservation Involvement – Board Meetings

The following Departmental staff were in attendance at some or all of the Board meetings throughout the reporting period:

- Operations Director, Eastern South Island
- Statutory Manager, Eastern South Island
- Acting Statutory Manager, Eastern South Island
- Board Support Officer, Canterbury Aoraki Conservation Board
- Pou Tairangahau
- Operations Managers – North Canterbury, Mahaanui, Geraldine, Aoraki Mount Cook and Twizel

Presentations from Departmental staff were received on a variety of topics including:

- Business Planning Process
- Te Mana o Te Taiao
- Nationwide partial CMS Reviews for Biking
- Kea Recovery Programme
- Upper Waimakariri River Weed Control Strategy
- DOC National Monitoring and Reporting System
- Aoraki Mount Cook National Park Management Plan Review
- Stewardship Land Reclassification Project
- Rangitahi/Molesworth CMP Review

## 6) Statutory Activity

### 6.1 Canterbury (Waitaha) 2016 Conservation Management Strategy (2016)

*Conservation General Policy requires the Department to report, at least annually, on the implementation of the CMS.*

#### Implementation Monitoring

At its bi-monthly meetings, the Board received regular operations and planning reports from the Department, which included information on the wide-ranging work undertaken by Department staff. These reports included and were aligned with engagement with mana whenua and references to the CMS Milestones.

NB: The Board has noted that the CMS does not contain a 'Canterbury Plains Place' and accordingly, are mindful that numerous sites throughout Canterbury (Waitaha), are not incorporated within the CMS.

### 6.2 Management Plans

There are two National Parks within the Board's area of jurisdiction. Each National Park has a management plan which is intended to be reviewed at 10-year intervals.

#### Aoraki Mount Cook National Park

The Aoraki Mount Cook National Park Management Plan was approved by the New Zealand Conservation Authority in 2004. The process for reviewing the Management Plan was paused while the Department and Ngāi Tahu worked through the wider implications of the Supreme Court's decision on the Ngāi Tai ki Tamaki case. Agreement has been reached to progress a new review of the Management Plan.

The Department presented an annual report to the Board on the existing Management Plan in October 2022.

The Board's involvement in plan making activities for the new Management Plan has been placed on hold until the Board is confident that the Department is engaging fully with mana whenua, and that the Board is satisfied that a framework is in place that will enable this process to comply with the Board's requirements that the new Management Plan is co-designed with Kaitiaki Rūnaka and is reflective of the Department's responsibility to 'give effect to the principles of the Treaty of Waitangi'.

### **Arthur's Pass National Park**

The Arthur's Pass National Park Management Plan was approved by the New Zealand Conservation Authority in December 2007. It was due for review in 2017, but this has yet to be commenced by the Department. The Department presented an annual report to the Board on the existing Management Plan in October 2022.



Arthur's Pass National Park  
*(Image: M-L Grandiek)*

## Te Waihora Joint Management Plan/Mahere Tukutahi o Te Waihora

The Te Waihora Joint Management Plan (2005) is the first statutory joint management plan between the Crown and Iwi, and results from the settlement of Ngāi Tahu claims against the Crown and in particular, the loss of access to places where the tribe produced or procured food and other resources. There has been no annual reporting to the Board since the commencement of the Plan. A process is yet to be created in partnership with Ngāi Tahu for the provision of monitoring reports for the Te Waihora Joint Management Plan.

## 7) Advocacy

All Board members have responsibility for liaising with other groups when opportunities arise, and some members have specific roles in liaison. The Board appointed various members to liaise with other groups and agencies.

*Table V: Board Liaisons and Representatives*

Board Member	Group/Agency/Organisation
Joshua Neville	Fish & Game
Dr Heather Purdie Michael McMillan	Tahr Interest Group Himalayan Tahr Control Plan Implementation Group
Euan Brook	National Wallaby Management Programme
Richard Suggate	Department of Conservation - Stewardship Land Reclassification Project
Jane Demeter Puawai Swindells-Wallace	Social Media - Facebook
Michael McMillan	DOC Community Fund

### 7.1 Board Liaisons

The Board's immediate neighbours are the Nelson Marlborough, West Coast Tai Poutini and Otago Conservation Boards. The Board's respective liaisons monitor the minutes for issues of common interest and report back at each meeting.

### 7.2 Advice to the Department of Conservation

The Board provided advice and recommendations to the Department on several Concessions applications within the following public conservation areas:

Lyttelton/Whakaraupō Harbour  
Arthur's Pass National Park  
Aoraki Mount Cook National Park  
Lake Middleton Recreation Reserve  
Rakahuri/Ashley River  
Stewardship land on south-eastern shore of Lake Pukaki

Mount Hutt Conservation Area  
Te Kahui Kaupeka Conservation Park  
Williams Wildlife Management Reserve  
Lake Ruataniwha Conservation Area  
Kowai River  
Oteake Conservation Park

### 7.3 Community Advocacy and Involvement

The Board believes that working with conservation organisations and members of the public is very important. Board meetings were held in different locations within the Board's rohe and opportunities for the public to attend Board meetings were advertised. Members of the public attended the Public Forum at several of the year's meetings, and a range of issues were raised. The Board appreciates this input from the public.

The Board provided submissions/comment on the following:

- Resource consent applications Kaituna Valley (Environment Canterbury)
- Western South Island Stewardship Land Review (Department of Conservation)
- National Wilding Conifer Control Programme (Minister of Conservation)

### 7.4 Community Visibility

The Board maintains a presence on the Department's website with updates provided throughout the year on activities undertaken. The Board also maintains a presence on social media via Twitter and Facebook.

### 7.5 Fees and Allowances

Fees and allowances are paid in accordance with the Fees and Travelling Allowances Act 1951. Fees for statutory boards are set in accordance with the Cabinet Fees Framework.

Any work undertaken by Board members other than preparing for or attending meetings, field trips or workshops, must either be approved at a meeting (and minuted), or pre-approved by the Chair in consultation with Department support staff.





## Appendix 1 – Minister of Conservation Letter Expectations

### Hon Poto Williams

MP for Christchurch East  
Minister of Conservation  
Minister for Disability Issues  
Associate Minister for Children



19 JUL 2022

Ref: 22-B-0196

Eila Gendig  
Canterbury Aoraki Conservation Board

Tēnā koe Ms Gendig

#### **Annual Letter of Expectations for 2022-23 – Canterbury Aoraki Conservation Board**

I would like to thank you and your board members for your ongoing efforts to serve the Canterbury Aoraki community and for continuing to be local conservation leaders.

The purpose of this letter is to confirm my expectations for your board. These expectations should inform the development of your board's planning process for the year. This letter also sets out a framework for successfully working with the Department of Conservation (the Department).

The basis for my expectations originates in the statutory functions set out in section 6M of the Conservation Act 1987 (the Act), section 30 of the National Parks Act 1980, and the Reserves Act 1977. As reflected in these statutes, the focus of conservation boards is policy issues, strategic direction, and planning, not the day-to-day operations of the Department.

#### **Government and ministerial priorities**

For the 2022-23 year, my priorities for conservation boards are to:

- Support the implementation of Te Mana o te Taiao – the Aotearoa New Zealand Biodiversity Strategy
- Contribute to any reviews of national park management plans and Conservation Management Strategies (CMSs) and support their progress effectively to promote strong conservation outcomes
- Embed the principles of the Treaty of Waitangi in accordance with the obligations of section 4 of the Act in all aspects of work
- Support the transition to a lower-carbon conservation delivery model, having regard to the Climate Change Response (Zero Carbon) Amendment Act 2019.

### **Board-specific priorities**

For the 2022-23 year, my priorities for the Canterbury Aoraki Conservation Board are to:

- Advocate for an ecological survey of marine ecosystems off the coast of Canterbury and for an integrated system of marine protection that is aligned with customary rights
- Advocate for improved management of braided river ecosystems.

I have been informed by my officials that your priorities for the 2022-23 year include:

- Support significant progress on the Aoraki Mt Cook National Park Management review
- Progress re-classification of stewardship land in Canterbury
- Take a different approach to grazing permissions on public conservation land to support better conservation outcomes
- Support the avoiding of abandoned infrastructure and other costly outcomes in the management of ski field permissions in Canterbury
- Progress on surveying Canterbury's marine ecosystems.

I expect these priorities to be reflected in your 2022-23 Strategic Annual Work Plan and that you will work with the Department on its priorities, and look forward to seeing the outcomes in your annual report.

### **Resources**

The Department services conservation boards in accordance with section 6V of the Act. This includes providing resources developed by the Department to help boards achieve the highest standards of conservation leadership. These are published and updated as appropriate at [www.conservationboards.org.nz](http://www.conservationboards.org.nz).

### **Your community**

As board members, you represent the public interest in conservation. It is integral that you are active and visible in your communities, so that you bring a well-informed community voice to the table. New Zealand communities are becoming increasingly engaged with conservation and are increasingly aware of the importance of preserving and protecting our natural environment as guardians for future generations. I expect your board to continue to encourage, nurture and facilitate this interest.

### **Working with the Department of Conservation**

The Department is focused on the delivery of quality conservation work, which aligns with the conservation leadership role you play within your local communities. I expect you to work collaboratively with your Operations Director and Statutory Manager to maintain a strong working relationship with the Department. This relationship is important in providing advice to the Department on conservation matters within your area.

I expect you to report on what is working well for you, and areas that require improvement.

### **Working with other conservation boards and the NZCA**

Conservation is a nationwide challenge, and work on conservation matters, management strategies and plans frequently requires working across boundaries with other conservation boards. I encourage you to continue to develop effective ways of working together with other conservation boards to establish a consistent and efficient approach and avoid a duplication of efforts. The New Zealand Conservation Authority (NZCA) is a source of support for conservation boards to draw upon in relation to the national and policy context for conservation issues.

### **No surprises**

I expect to be informed well in advance of any material or significant events relating to the board, whether positive or negative. Examples of matters that could fall within the 'no surprises' policy could include, but are not limited to, imminent media coverage of any activities that could attract critical media comment, or any matters on which I could be asked to express a view.

### **Understanding conservation boards' legal obligations**

I expect that all conservation board members fully understand their legal obligations under conservation law, including the hierarchy of priorities that should be taken into account when making decisions. Conservation boards' legal obligations are covered in section 5 of the Conservation Board Manual.<sup>1</sup>

### **Planning and reporting**

I expect you, with your Operations Director, will be finalising your work plan in the near future. Your work plan should align with your statutory obligations under the Act, the National Parks Act 1980, and the Reserves Act 1977. I expect that your finalised work plan would include measures and milestones, demonstration of what success will look like for each priority, and how your board will be able to support the Department's priorities.

I look forward to hearing about the work you have achieved in 2021-22 in your annual report through the NZCA in the coming months. I am also keen to get a greater understanding of the work in your area and encourage you to provide me with a brief interim report on your activities mid-year as you progress your 2022-23 workplan. The Department will provide a template for you to use for this purpose.

I appreciate the effort and commitment of your board to conservation in your community and wish you a successful year.

Nāku noa nā



Hon Poto Williams  
**Minister of Conservation**

---

<sup>1</sup> <https://www.doc.govt.nz/about-us/statutory-and-advisory-bodies/conservation-boards/conservation-board-manual/conservation-board-statutory-functions-and-powers/>



## **CANTERBURY AORAKI CONSERVATION BOARD TE RŪNANGA PAPA ATAWHAI O WAITAHA ME AORAKI WORK PROGRAMME 2022/2023**

---

### **WORK PROGRAMME OVERVIEW**

#### **PURPOSE**

This work programme was developed in October 2022 by the Canterbury Aoraki Conservation Board/Te Rūnanga Papa Atawhai o Waitaha me Aoraki (the Board), in response to the Minister of Conservation's annual Letter of Expectation to Conservation Boards, dated 19 July 2022.

It has been developed for the Board to give effect to its:

- Functions under Section 6M of the Conservation Act 1987
- Powers of the Board as prescribed under Section 6N of the Conservation Act 1987
- The role described in Section 30 of the National Parks Act 1980
- Other statutory requirements of conservation boards.

In performing its role, the Board has a statutory obligation to act in a manner that is consistent with Section 4 of the Conservation Act 1987:

*"This Act shall be sol interpreted and administered as to give effect to the principles of the Treaty of Waitangi".*

Section 4 is a powerful and fundamental provision, requiring more than procedural steps and must be considered in all actions and undertakings of the Board.

### **STRUCTURE**

#### **Part A: Management Planning**

Board activities aimed at the review/amendment/development/monitoring of statutory management plans including Conservation Management Strategies (CMS) and National Park Management Plans (NPMP).

#### **Part B: Meeting Expectations as a Board**

Board activities that are aimed at the statutory functions of the Board, the role the Board has in providing advice, the role the Board has to engage and connect with local communities on conservation issues, the wider relationships the Board must maintain and the Board fulfilling its obligations in respect to the Treaty of Waitangi.

#### **Part C: Furthering the Conservation Effort**

Board activities that arise from risks/issues/opportunities the Board sees that will further conservation. These are the key focus areas for the Board's advocacy efforts for the year.


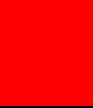



## PART A: MANAGEMENT PLANNING

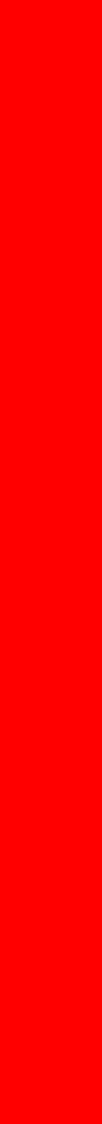
### Board objectives:

Ensure that statutory planning documents in the Canterbury Aoraki Conservation Board's rohe are:

- Effective as direction to guide the management of conservation lands and waters, plants, birds, wild animals, pest, marine mammals, and historic sites and cultural values.
- Giving effect to the principles of the Treaty of Waitangi, including reflecting any co-management objectives with Treaty Partners and giving effect to Treaty settlements.
- Usefully reported on, so the Board clearly understand the effectiveness in achieving conservation outcomes.

### PLANNED BOARD ACTIVITIES

MONITORING AND REPORTING	Progress Commentary	Status
1. The Board will receive annual reporting on the implements of Statutory Plans:  1.1 Canterbury Waitaha Conservation Management Strategy (2016)	The Department provided updates on the CMS milestones monitoring report in November 2022. The Board provided comments and then requested follow-up information from the Department. As of June 2023, the Board is still awaiting answers to its questions.	
1.2 Te Waihora Joint Management Plan (2005)	<b>A process is yet to be created in partnership with Ngāi Tahu for the provision of monitoring reports for the Te Waihora Joint Management Plan (2005).</b>	
1.3 Arthur's Pass National Park Management Plan (2007) 1.4 Aoraki Mount Cook National Park Management Plan (2004)	The Department provided monitoring reports for Arthur's Pass and Aoraki Mount Cook National Parks Management Plans in October 2022. The Board discussed the reports and its written responses at a meeting in October 2022.	
2. The Board will report on the progress on the implementation of each Statutory Plan to the New Zealand Conservation Authority (NZCA) and the Minister in the Board's 'end of year' report.	Completed in the 2022/2023 Annual Report.	
3. The Board will provide advice to the Department of Conservation on the implementation of management plans, including highlighting specific concerns.	The Department provided monitoring reports for Arthur's Pass and Aoraki Mount Cook National Parks Management Plans in October 2022. The Board discussed the reports and its written responses at a meeting in October 2022.	

PLAN MAKING	Progress Commentary	Status
<p>4. The Board will actively participate and make itself available for plan making activities in association with the development of a new Aoraki Mount Cook National Park Management Plan.</p> <p>5. In relation to development of a new Aoraki Mount Cook National Park Management plan, the Board will specifically:</p> <p>5.1 Ensure the new plan is:</p> <p>5.1.1 Co-designed with Kaitaki Rūnaka, and</p> <p>5.1.2 Reflective of the Department’s responsibility to “give effect to the principles of the Treaty of Waitangi”, and</p> <p>5.1.3 Proactively recognising and enabling Ngāi Tahu cultural values, rights, and interests in Aoraki Mount Cook National Park at both an outcomes and policy level.</p> <p>5.2 Continue to acknowledge and advocate for mana whenua rights to:</p> <p>5.2.1 Customary harvest, and</p> <p>5.2.2 Uphold their responsibilities as kaitiaki in line with their own tikanga and kawa.</p> <p>5.3 Promotes strong conversation outcomes.</p> <p>5.4 Advocate for inclusion of new and best practice management planning approaches to mitigate the increasing effects of climate change.</p>	<p><b>The Board’s involvement in plan making activities for the new AMCNPMP has been placed on hold until the Board is confident that the Department is engaging fully with mana whenua and that the Board is satisfied that a framework is in place that will enable this process to comply with the requirements in 5.1 and 5.2.</b></p>	

<p>6. In relation to the existing Arthur's Pass National Park Plan and Canterbury Waitaha Conservation Management Strategy, the Board will raise Plan management issues and potential partial review requirements, as and when necessary.</p>	<p>Ongoing – e.g., ski field infrastructure. Liaising with Arthur's Pass community on a number of issues including kea and the Visitor Centre.</p> <p>Liaise with the Kaikoura community on Hutton's shearwaters and a dark sky initiative.</p>	
<p>7. The Board will participate in processes relating to Conservation Management Planning reform.</p>	<p>The Board received planning updates from Departmental staff in relation to mountain biking and stewardship land reviews.</p> <p>Liaise with the NZCA to seek clarity on impacts to Conservation Boards resulting from Conservation Law reform.</p>	
<p>8. The Board will participate in neighbouring Board's management processes (and similar) where overlapping boundary responsibilities are present.</p>	<p>The Board participated in management processes with the Nelson Marlborough and West Coast Tai Poutini Conservation Boards in relation to Rangitahi Molesworth and the West Coast CMS Review.</p> <p>The Board provided comments to the Department on the Western South Island stewardship land review, with particular reference to parcels of land in the Otira Valley that were within the Board's rohe.</p>	



## PART B: MEETING EXPECTATIONS AS A BOARD

### Board objectives:

The Canterbury Aoraki Conservation Board works effectively as a Board by:

- Representing diverse community interests in conservation management.
- Liaising with relevant partners and stakeholders.
- Meeting its obligations in relation to Section 4 of the Conservation Act 1987 and conducting itself as a productive and genuine Treaty Partner.

PLANNED BOARD ACTIVITIES (LIAISON)	Progress Commentary	Status
9. The Board will nurture ongoing working relationships with Fish & Game Council regarding issues of mutual interest within the region.	A Board member acted as liaison to Fish & Game and attended meetings when possible. The Board engaged with Fish & Game re common issues on the Rakaia River.	
10. The Board will foster open and transparent relationships with Te Rūnanga o Ngāi Tahu and Papatipu Rūnanga within the Board's rohe.	Te Rūnanga staff and Papatipu Rūnanga receive regular email updates from the Board. Through the Te Rūnanga o Ngāi Tahu appointees, there is regular dialogue with Te Rūnanga and Papatipu Rūnanga regarding the Board's activities.	
11. The Board will work strategically with other Conservation Boards and the NZCA, and manage relationships through liaison, collaboration and frequent communication.	<p>Liaison undertaken with Otago and Southland Conservation Board Chairs. Frequent liaison and conservation with West Coast Tai Poutini Conservation Board Chair, including visits from said Chair to the February 2023 and April 2023 meetings of the Canterbury Aoraki Conservation Board.</p> <p>Joint meeting with Nelson Marlborough Conservation Board in April 2023.</p> <p>Liaison with NZCA, in particular around an anticipated Environment Court hearing on the Rakaia River Water Conservation Order implementation</p> <p>Board members attended the official opening of Kura Tāwhiti.</p> <p>Preparation in progress for hosting the NZCA (October 2023).</p> <p>The Board celebrated local conservation efforts by holding a Conservation Awards evening with approximately 100 guests, including the Minister of Conservation.</p>	

PLANNED BOARD ACTIVITIES (SUBMISSIONS)	Progress Commentary	Status
<p>12. The Board may take opportunities, where appropriate and as they arise, to make submissions in support of improving conservation outcomes for Canterbury/Waitaha.</p> <p>12.1 The Board will be selective about the submissions it makes to best target its influence for the best advantage to conservation in Canterbury/Waitaha.</p> <p>12.2 The Board will acknowledge Ngāi Tahu rights and interests in all submissions or make it explicit the view is only that of the Board.</p> <p>12.3 Where more efficient, the Board will consider supporting submissions by other Parties instead of lodging their own.</p>	<p>In February 2023, the Board made a submission to the Regional Council on the Wangan Hills Kaituna Valley feedlot resource consent applications. The submission opposed the construction of the feedlots as they represented a risk of flooding and release of effluent into Te Waihora/Lake Ellesmere. In June 2023, Wangan Hills withdrew their application.</p> <p>The Board developed the submission in collaboration with Wairewa rūnanga.</p> <p>The Board provided advice to the Department and met with staff/managers to discuss potential impacts of a concession application for marine mammal viewing in and around Whakaraupō/Lyttelton Harbour, using jet skis.</p>	
PLANNED BOARD ACTIVITIES (PERMISSIONS)	Progress Commentary	Status
<p>13. The Board will maintain and provide to the Department, a trigger list of particular areas of focus that it expects to be consulted upon for permission/concession applications.</p>	<p>Trigger list maintained and reviewed through the year. A number of permissions items have come to the Board's attention through this mechanism.</p>	
<p>14. The Board will review permissions applications (concessions), which meet the Board's trigger criteria, and provide the Department with advice and recommendations.</p>	<p>Numerous permissions applications were reviewed for 2022/23 and response provided to the Department.</p> <p>Topics included gravel extraction, marine mammal viewing, hut and building leases, tourism activities and many more.</p>	
<p>15. The Board will advocate for the rights, interests, and aspirations of mana whenua in Department-led permissions processes, including the importance of mana whenua presence, engagement, perspectives, and kaitiaki responsibilities in decision making.</p>	<p>The Board has requested that permissions reports from the Department include information about engagement with mana whenua, and has sought to support mana whenua rights, interests and aspirations where relevant in submissions on permissions applications. The Board continues to express their expectations to the Department to involve mana whenua in all applicable circumstances.</p>	

PLANNED BOARD ACTIVITIES (TREATY OF WAITANGI)	Progress Commentary	Status
16. The Board will advocate for Department and Board policies, processes and actions to recognise and enable mana whenua rights, interests and aspiration to be realised, and appropriate tikanga and kawa to be adhered to.	The Board continues to advocate when and where appropriated. This has included an amendment to the Department's Operations reporting to specifically identify (in a separate column), how Section 4 Conservation Act 1987 obligations have been met.	
17. Te Rūnanga o Ngāi Tahu and Papatipu Rūnanga within the rohe of the Board will be advised of the date and location of all Board meetings.	The Board Support Officer advises Te Rūnanga and Papatipu Rūnanga ahead of all Board meetings. This contact list has been updated to include Te Rūnanga o Kaikōura.	
18. A summary of key agenda items for each Board meeting are provided to all Rūnanga.	A summary has been provided alongside the full agenda for most (but not all) meetings.	
19. At least one Board meeting a year will be held on a marae in Canterbury/Waitaha.	The April 2020 meeting in Kaikōura was hosted by Ngāti Kura and was intended to be held on the marae. However, the marae was booked for another hui. Board members participated in a field visit including cultural narrative from mana whenua and the cultural concepts; whanaungatanga and manaakitanga. Board members engaged in the process of pōwhiri at Arowhenua marae during the May 2023 field trip.	
20. Cultural development opportunities will be incorporated into Board meetings and field trips, and where practical, through involvement in Pūkenga Atawhai courses.	Cultural development opportunities have been incorporated into Board meetings and field trips: <ul style="list-style-type: none"> <li>• Inclusion of Te Reo Māori and Tikanga Māori at Board meetings, including waiata</li> <li>• Kaikoura cultural tour</li> <li>• Te Ana Māori rock art field trip</li> <li>• Field trip to Kura Tāwhiti including introduction to cultural aspects of the redeveloped site.</li> </ul>	
21. The Board will actively consider ways to include mana whenua perspectives and knowledge into field trip activities.	Field trip to Kaikōura (April 2023) hosted by Ngāti Kuri, involving cultural narrative and visits to significant cultural sites.  Field trip (May 2023) included pōwhiri at Arowhenua marae and visit to historic rock art site and Papatipu rūnanga native nursery.  Cultural narrative from Ngāi Tūāhuriri on field trip to Kura Tāwhiti.	

## PART C: FURTHERING THE CONSERVATION EFFORT

### Board objectives:

The Board will undertake a range of activities to further conservation outcomes and respond to key areas of concern or opportunities. The aim is to effectively advance these causes in a meaningful way that reiterates the value of the Board and enables Board members to make a difference.

The intention is to address these matters via Focus Groups comprising of interested and active Board members.

Particular areas of focus for advocacy by the Board in the 2022/2023 year include braided rivers, weed management, slack/back country recreational access and assets, responding to the challenges of climate change, marine protection, and to champion an iwi vision for public conservation lands and waters.

### Climate Change:

The Board will consider the implications of climate change on conservation in all its work, including but not limited to focus groups, permissions and submissions.

### Focus Group – Braided Rivers

**Purpose:** Improved conservation outcomes for braided riverbeds, species and associated aquatic and terrestrial ecosystems.

PLANNED BOARD ACTIVITIES	Progress Commentary	Status
22. Work strategically with mana whenua, stakeholders, the Department of Conservation and other organisations such as ECAN, LINZ, District Councils and BRaid to promote and support protection of braided river habitat and native species.	Registered with Environment Canterbury (ECan) as a stakeholder to provide input to braided river policy in the development of a new integrated Regional Plan.  Visit to Twizel kakī aviary to understand the captive breeding and reintroduction programme, and ongoing threats to this endangered wading bird.  Presentation from Te Manahuna Aoraki Project on predator control, weed control, protection and monitoring of invasive species in the upper Mackenzie Basin.	

<p>23. Advocate for stronger protection of braided river habitats, water flows and species.</p>	<p>Via concession applications for activities on braided riverbeds and riparian areas.</p> <p>Board liaison with urgency, with NZCA, Freshwater Anglers of NZ, and Fish &amp; Game on a potential upcoming Environment Court hearing to seek direction on implementation of the Rakaia River Water Conservation Order.</p> <p>Advocating for protection of biodiversity and conservation values where vehicle use is or may be an issue e.g., permission for gravel extraction in braided river habitats and 4WD vehicles in braided rivers on 'Crate Day'.</p>	
-------------------------------------------------------------------------------------------------	-----------------------------------------------------------------------------------------------------------------------------------------------------------------------------------------------------------------------------------------------------------------------------------------------------------------------------------------------------------------------------------------------------------------------------------------------------------------------------------------------------------------------------------------------------------------	--

### Focus Group – Weed Management

**Purpose:** Advocate for Department of Conservation resourcing, monitoring, prioritisation, technical capacity, working with others, and data and systems for weed management.

PLANNED BOARD ACTIVITIES	Progress Commentary	Status
<p>24. Advocate for more effective weed management on conservation land in light of the recommendations made in the Parliamentary Commissioner for the Environment's report "Space Invaders: A review of how New Zealand manages weeds that threaten native ecosystems"&gt;</p>	<p>Regular review of weed management activity and effectiveness undertaken by the Board when discussing Department operations reports.</p> <p>Concerns raised with Department operations team regarding reduced budget for weed management in the region in the 2022-23 budget.</p> <p>Board members raised concerns with the Horomaka/Banks Peninsula community regarding weed problems and future risks on the Peninsula.</p>	
<p>25. Advocate for stronger inclusion of weed problems and weed management within the requirements of the Monitoring and Reporting Framework for Te Mana o Te Taiao/Aotearoa New Zealand Biodiversity Strategy.</p>	<p>Concerns raised with the Department regarding reduced support for wilding pine management at a national scale and its implications for the eastern South Island.</p> <p>Letter sent from the Board to the Minister of Conservation expressing the Board's concerns about the risks of reduced management of wilding pines.</p>	

**Focus Group – Backcountry Recreation Assets and Access**

**Purpose:** Maintenance and improvements of Canterbury backcountry access and infrastructure, and for this experience to be appropriate for the user group.

PLANNED BOARD ACTIVITIES	Progress Commentary	Status
26. Advocate for monitoring and reporting on the condition of a variety of assets each year.	Raised issues of concern about the declining condition of backcountry access at multiple times during the Board year, and in discussion with Departmental Operations Managers within the Board’s rohe.	
27. Encourage the maintenance of relevant backcountry assess and infrastructure by the Department.	<p>In relation to the Clough Cableway, the Board advocated to see the cableway maintained, with a successful outcome.</p> <p>Interest in community group activities to develop a new track in the Geraldine district.</p> <p>Inquired about Godley Head asbestos removal project regularly.</p> <p>Advocacy for walking access in Aoraki Mount Cook National Park, in particular the Hooker Swing Bridge and the Husky Flats wash-out.</p>	
28. Encourage policy, planning and strategy that enables the provision of low carbon access and hunting options to all public conservation lands, and other Crown estate used for recreation.	<p>Advocated for walking access (Tasman River outlet) during Aoraki Mount Cook National Park Management Plan review workshops.</p> <p>Advocated for sustainable transport options and increased capacity for planned EV charging stations at Aoraki Mount Cook Village.</p>	
29. As required, support other like-minded persons and community groups on access issues including over private land and paper roads.	<p>Engaged with tahr hunters at TPILG meetings around hunter access, in particular maintaining 4WD access in places it currently exists e.g., Hopkins and Dobson Valleys.</p> <p>Advocating for protection of biodiversity and conservation values where vehicle use is or may be an issue e.g., permission for gravel extraction in braided river habitats and 4WD vehicles in braided rivers on ‘Crate Day’.</p>	

<p>30. Encouraging discussion and thought leadership on future climate change impacts to access and infrastructure in the slack and backcountry, including ski fields.</p>	<p>A Board member attend a Departmental Senior Leadership Team Climate Change workshop at Aoraki Mount Cook, providing a presentation to managers on climate change, and engaged in discussion about implications and adaptation.</p> <p>Undertook survey and prepared report on condition of old Mt Potts ski field as example of possible future of ski field abandonment.</p> <p>Ongoing considerations of non-snow use of ski fields and ski field infrastructure.</p>	
----------------------------------------------------------------------------------------------------------------------------------------------------------------------------	----------------------------------------------------------------------------------------------------------------------------------------------------------------------------------------------------------------------------------------------------------------------------------------------------------------------------------------------------------------------------------------------------------------------------------------------------------------------------	--

### Focus Group – Iwi Vision for Public Conservation Land and Waters

**Purpose:** Provide leadership for internal processes that ensure the Board gives effect to the principles of the Treaty of Waitangi in its actions.

PLANNED BOARD ACTIVITIES	Progress Commentary	Status
<p>31. Facilitate the involvement of mana whenua on field trips to enable mana whenua perspectives to be included in activities.</p>	<p>The Kura Tāwhiti, Kaikōura and Arowhenua-Twizel field trips provided an opportunity for Board members to learn from mana whenua.</p>	
<p>32. Keep the Board informed of any developments following the <i>Ngāi Tai Ki Tāmaki Tribal Trust v Minister of Conservation</i> [2018] NZSC case (relating to Section 4 of the Conservation Act 1987).</p>	<p>Ongoing, there have been minimal developments that the Board is aware of in the last year.</p>	
<p>33. Provide insight into Ngāi Tahu perspectives around stewardship land reclassification and marine reserve proposals, and input into any Board submissions in respect of reclassification proposals.</p>	<p>The Board provided comments to the Department on the Western South Island stewardship land review, on the parcels of land in the Otira Valley that were within the Board’s rohe. The Board recommended that a small 0.34ha land parcel be added to Arthur’s Pass National Park, on the condition that Te Rūnanga o Ngāi Tahu no longer opposes additions of land to national parks in the Ngāi Tahu takiwā. The Board supported the recommendation that the Otira riverbed be added to the Tarahanga e Toru Historic Reserve.</p> <p>The Board has received a single briefing from the Department on the progress of the Northern South Island stewardship land review, which includes stewardship land between the Hurunui and Clarence Valleys.</p>	

34. Ensure that the Board understands and gives effect to mana whenua priorities for Aoraki Mount Cook National Park through the management plan review.	Due to the lack of engagement between the Department and mana whenua to date, the Board has not received any information about mana whenua priorities for the review. The Board has expressed a desire for joint workshop(s) with mana whenua once mana whenua and the Department have agreed to a framework for their engagement.	
35. Keep the Board informed of any developments relevant to the Te Waihora Joint Management Plan and management of Te Waihora more generally.	This has been discussed at a number of Board hui, however, there has been little in the way of developments to provide information on in the last year.	
36. Champion Board advocacy for the adoption of a framework that would enable cultural harvest/mahinga kai activities to occur legally on public conservation lands and waters.	The Board continues to pursue opportunities to advocate for cultural harvest wherever possible.	

### Focus Group – Marine Protection

**Purpose:** Progress advocacy for protection of marine ecosystems and species.

PLANNED BOARD ACTIVITIES	Progress Commentary	Status
37. Consider advocating for and protect marine mammals and threatened marine species (e.g., Hector’s dolphin), where opportunities arise.	<p>Provide advice to the Department and met with staff/managers to discuss potential impacts for marine mammal viewing in and around Whakaraupō/Lyttelton Harbour, using jet skis.</p> <p>Voiced concerns around SailGP and marine mammal protection strategy.</p> <p>The Board has received reports and updates from Department Operations staff regarding marine species mortality, including Hector’s dolphin throughout the year.</p>	
38. Respect and advocate for Ngāi Tahu rangatiratanga, customary rights and aspirations in the marine environment.	Limited opportunities but have advocated for rangatiratanga, customary rights and aspirations in the marine environment in relation to concessions applications.	





Rock art - Taniwha Gully, Pleasant Point  
(Image: E Gendig)

*This report is presented to the New Zealand Conservation Authority as required by the Conservation Act 1987 and distributed to interested parties. Members of the public are welcome to attend Conservation Board meetings.*

*If you would like more information on the Canterbury Aoraki Conservation Board, please see the website [www.conservationboards.org.nz](http://www.conservationboards.org.nz) or contact the Board Support Officer at the Department of Conservation in Christchurch, Phone: 027 5416663 or Email [canterburyaorakiboard@doc.govt.nz](mailto:canterburyaorakiboard@doc.govt.nz)*