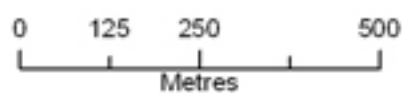
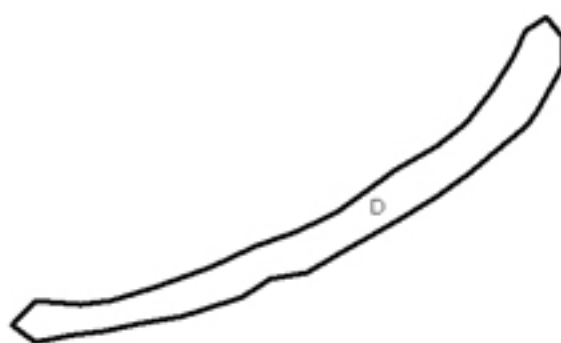
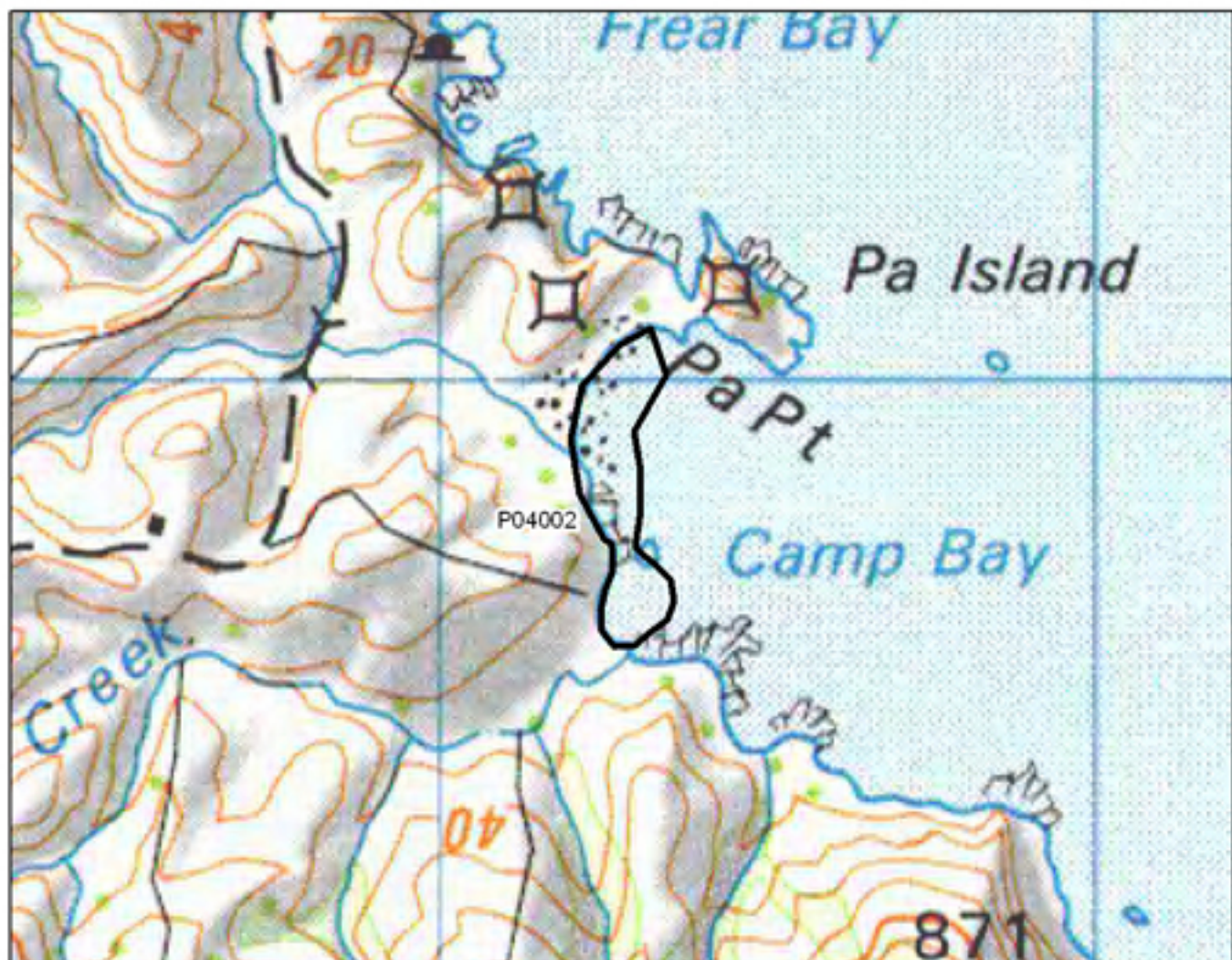


P04001 Tupou Bay

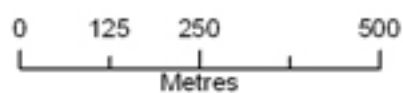


- S= Shrubland
- F= Forest
- W= Wetland
- E= Estuarine



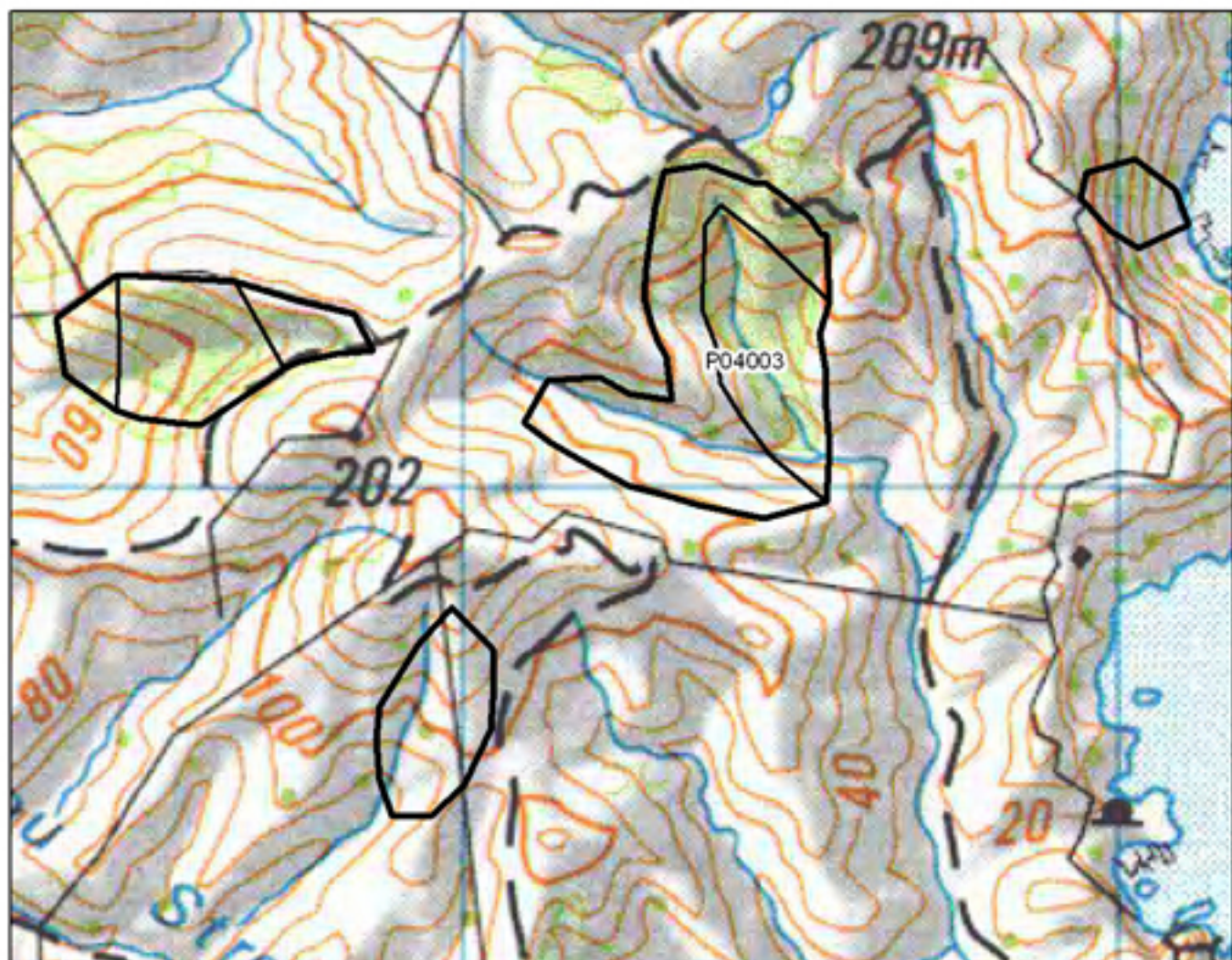


P04002 Camp Bay

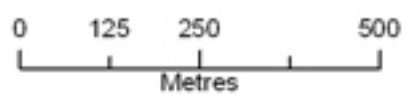


- S= Shrubland
- F= Forest
- W= Wetland
- E= Estuarine



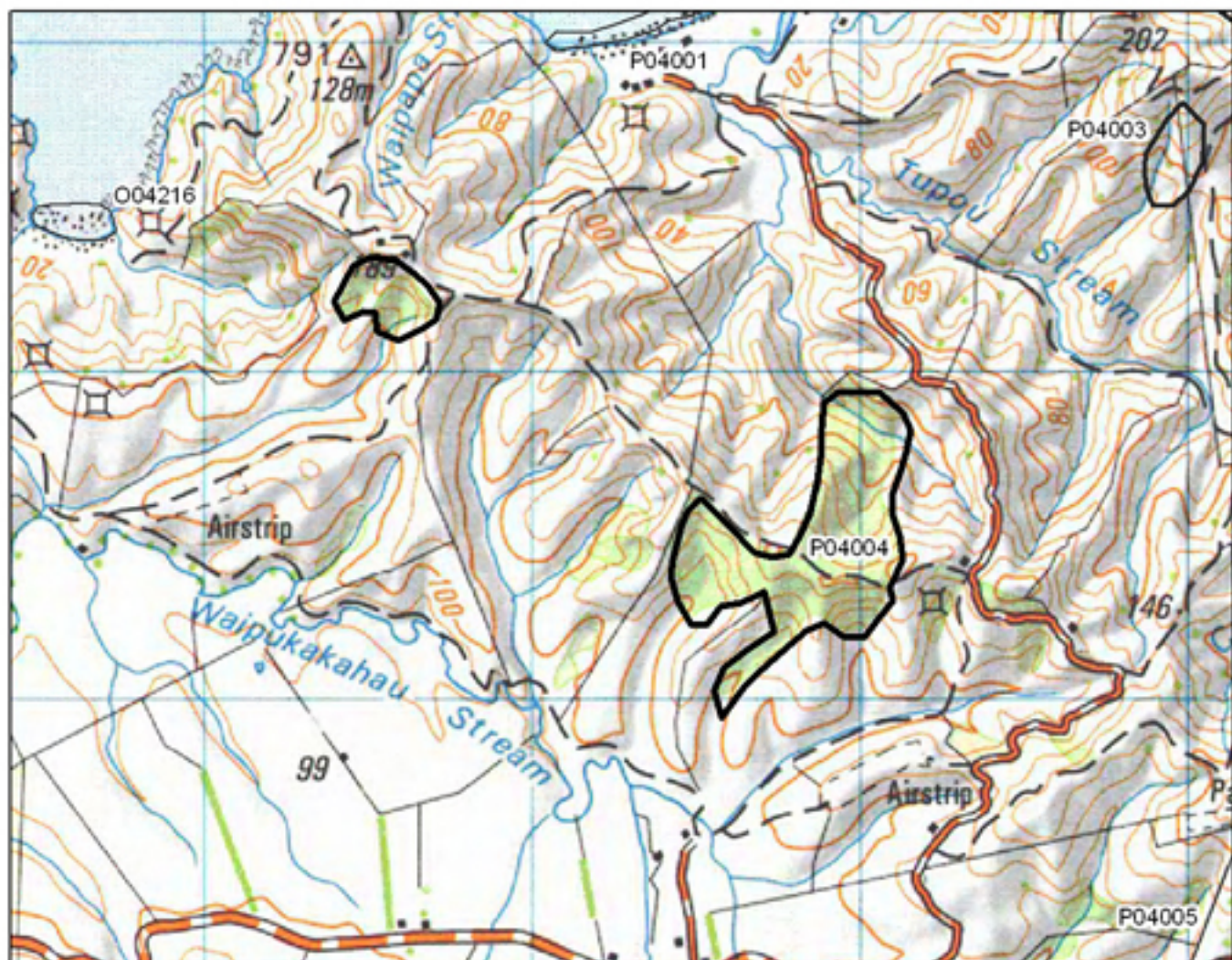


P04003 Te Umukukupa

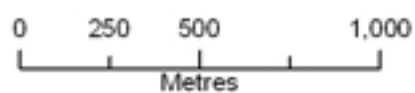


- S= Shrubland
- F= Forest
- W= Wetland
- E= Estuarine



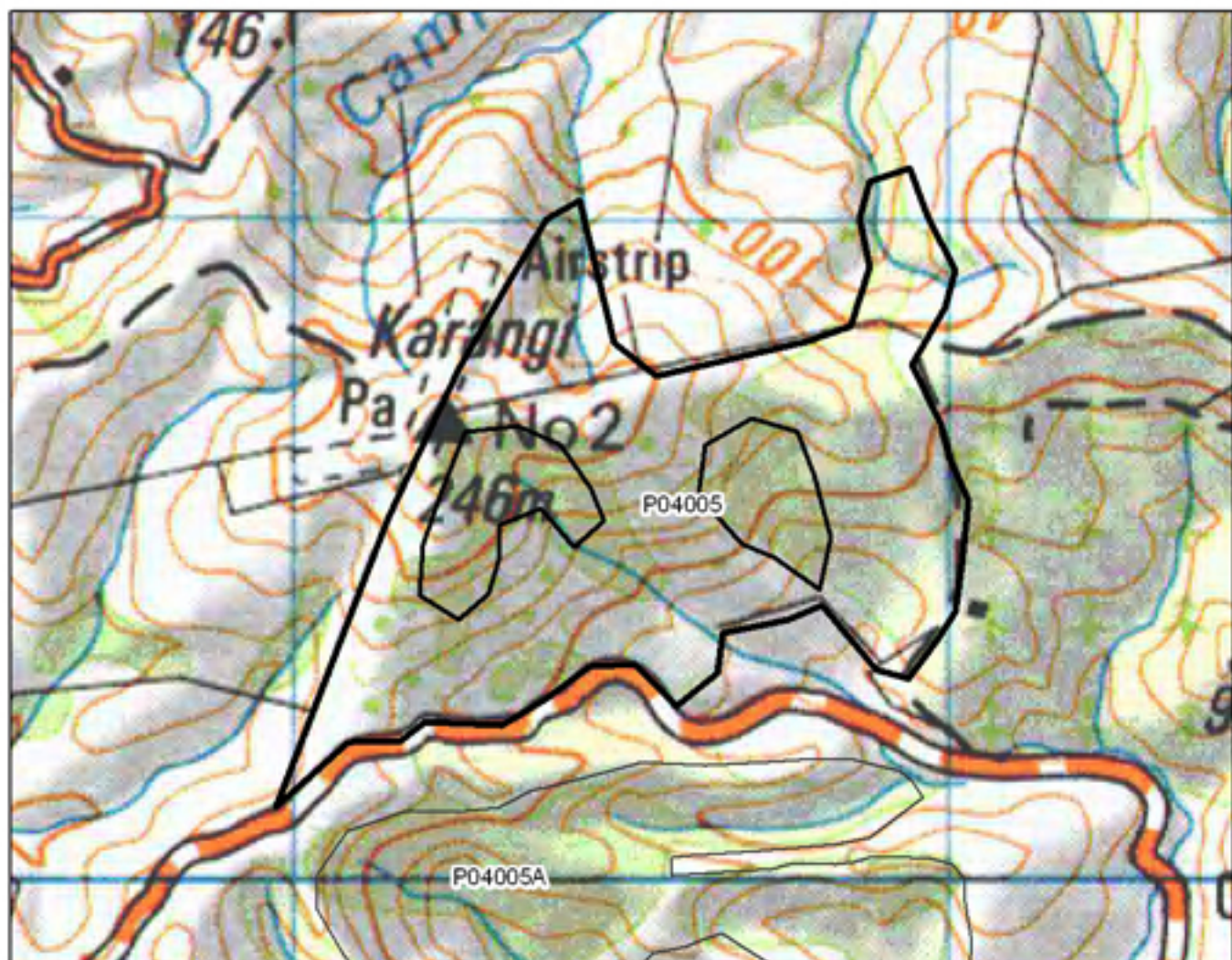


P04004 Tupou Bush

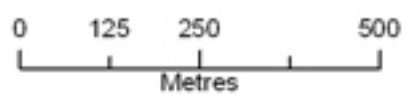


- S= Shrubland
- F= Forest
- W= Wetland
- E= Estuarine



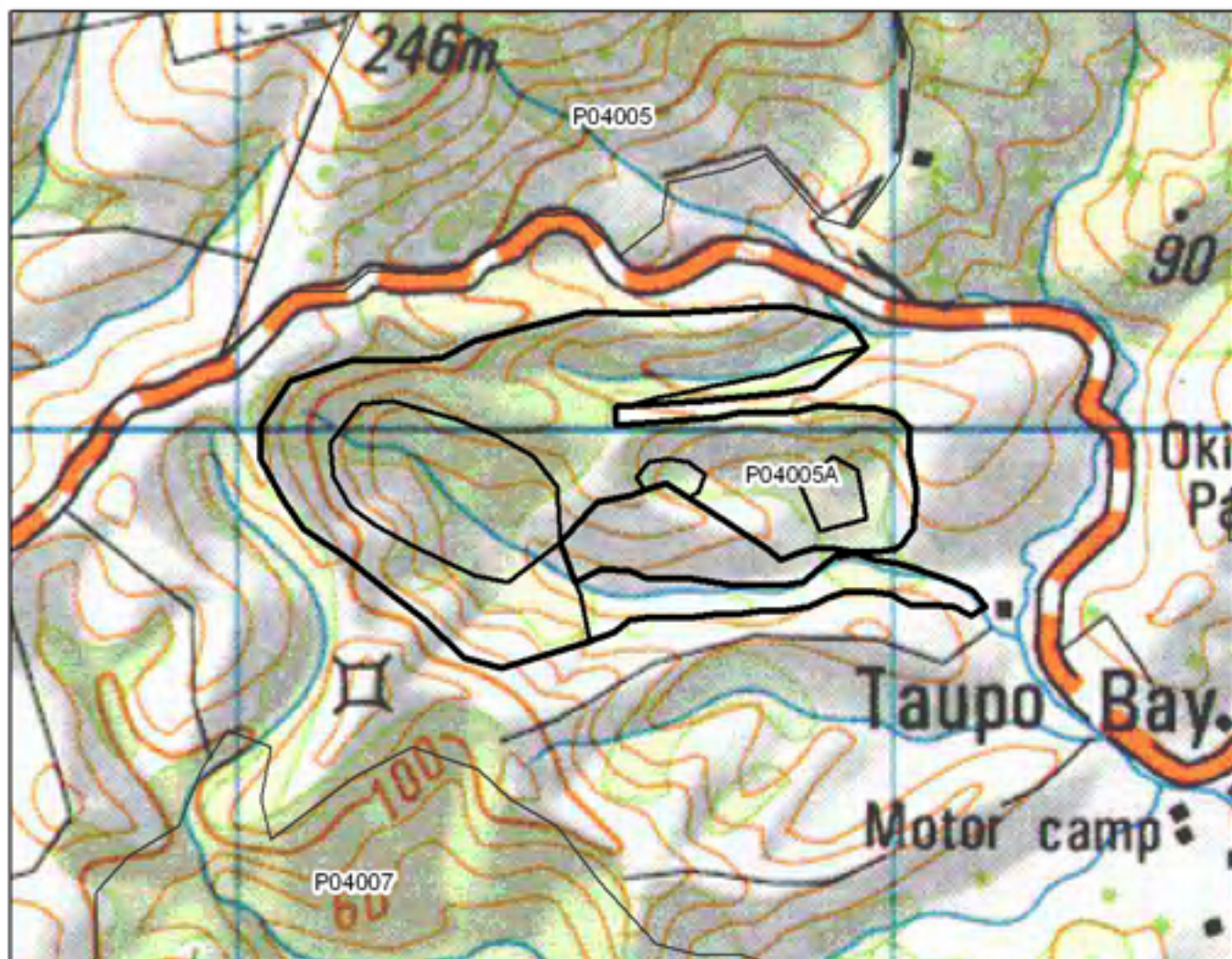


P04005 Karangí

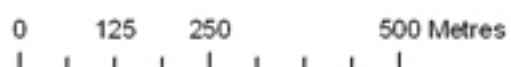


- S= Shrubland
- F= Forest
- W= Wetland
- E= Estuarine

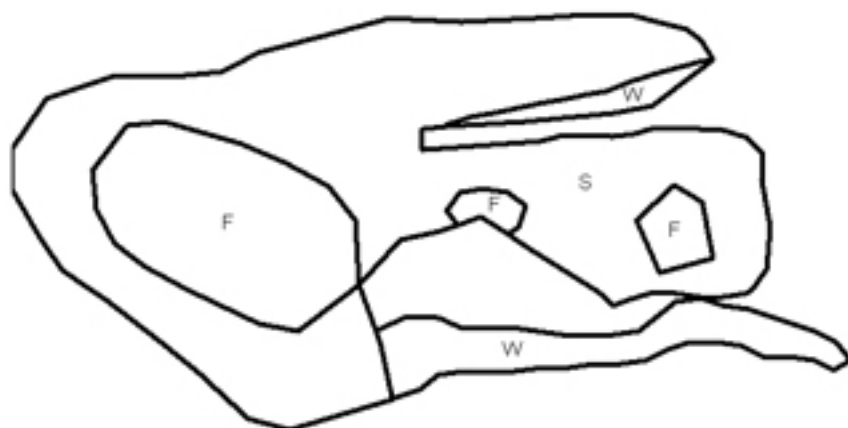


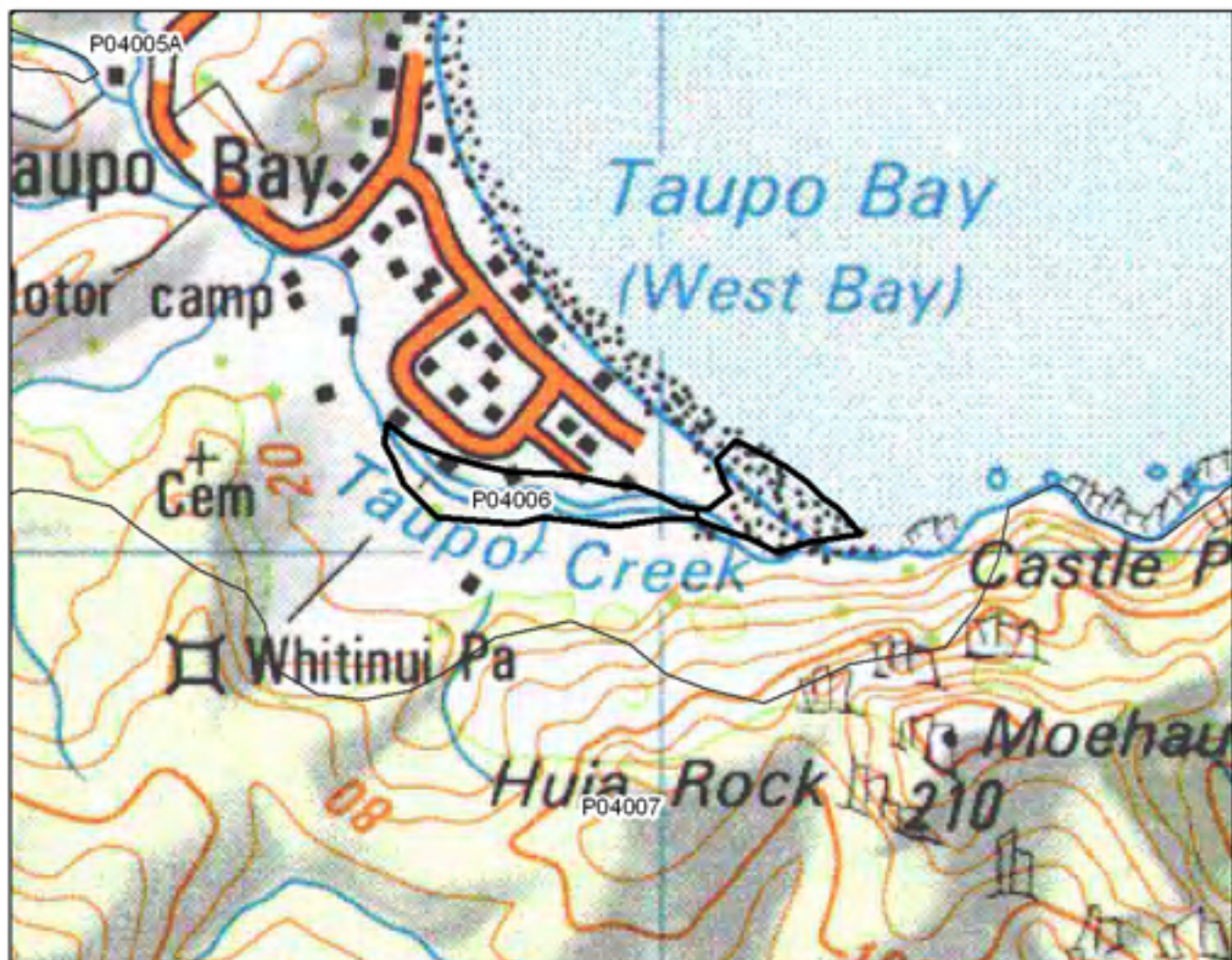


P04005A Taupo Bay Hill

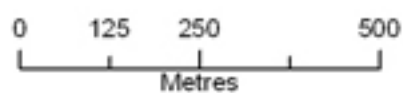


- S= Shrubland
- F= Forest
- W= Wetland
- E= Estuarine



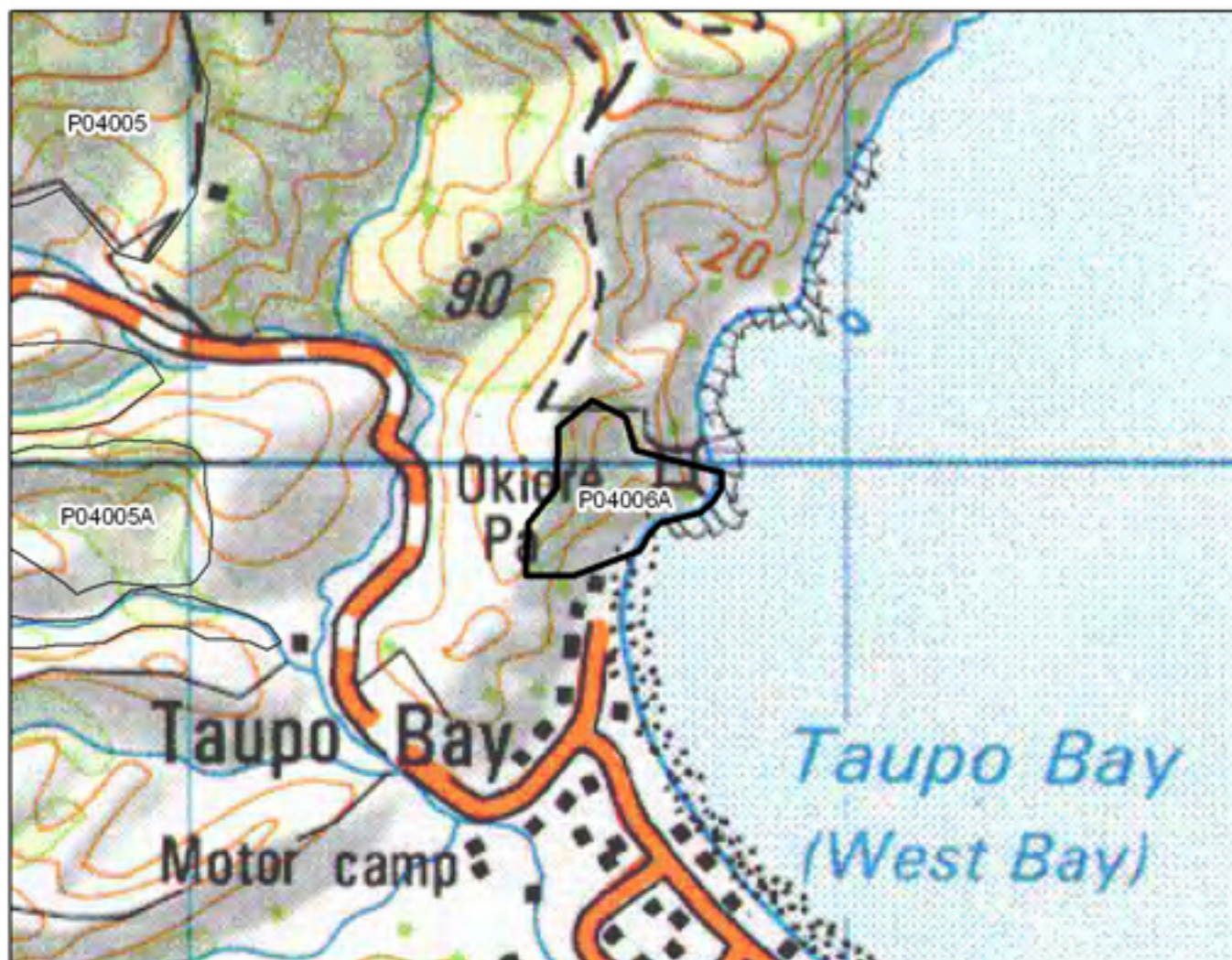


P04006 Taupo Bay Estuary

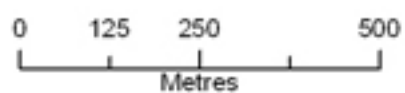


- S= Shrubland
- F= Forest
- W= Wetland
- E= Estuarine



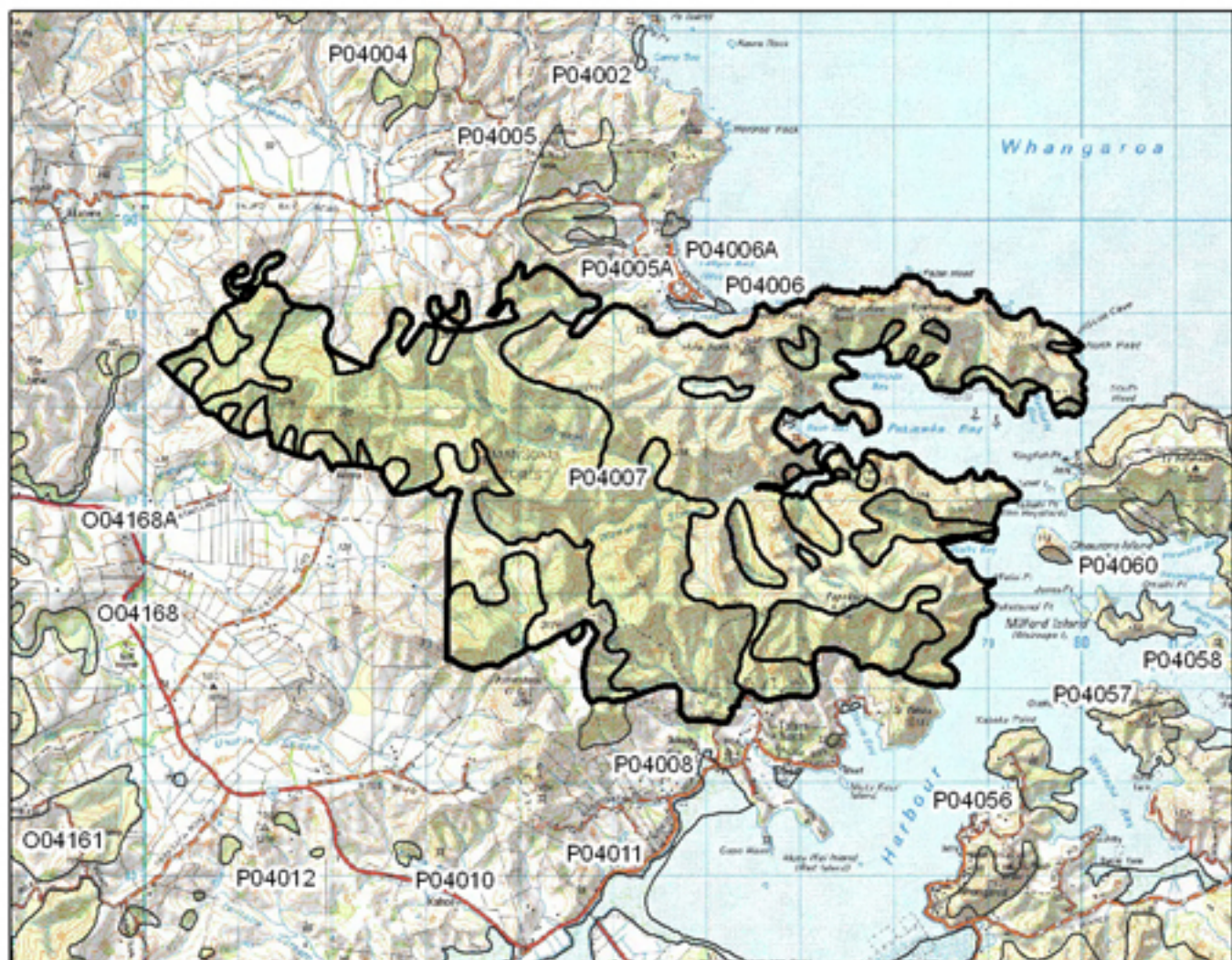


P04006A Taupo Bay Cliffs



- S= Shrubland
- F= Forest
- W= Wetland
- E= Estuarine



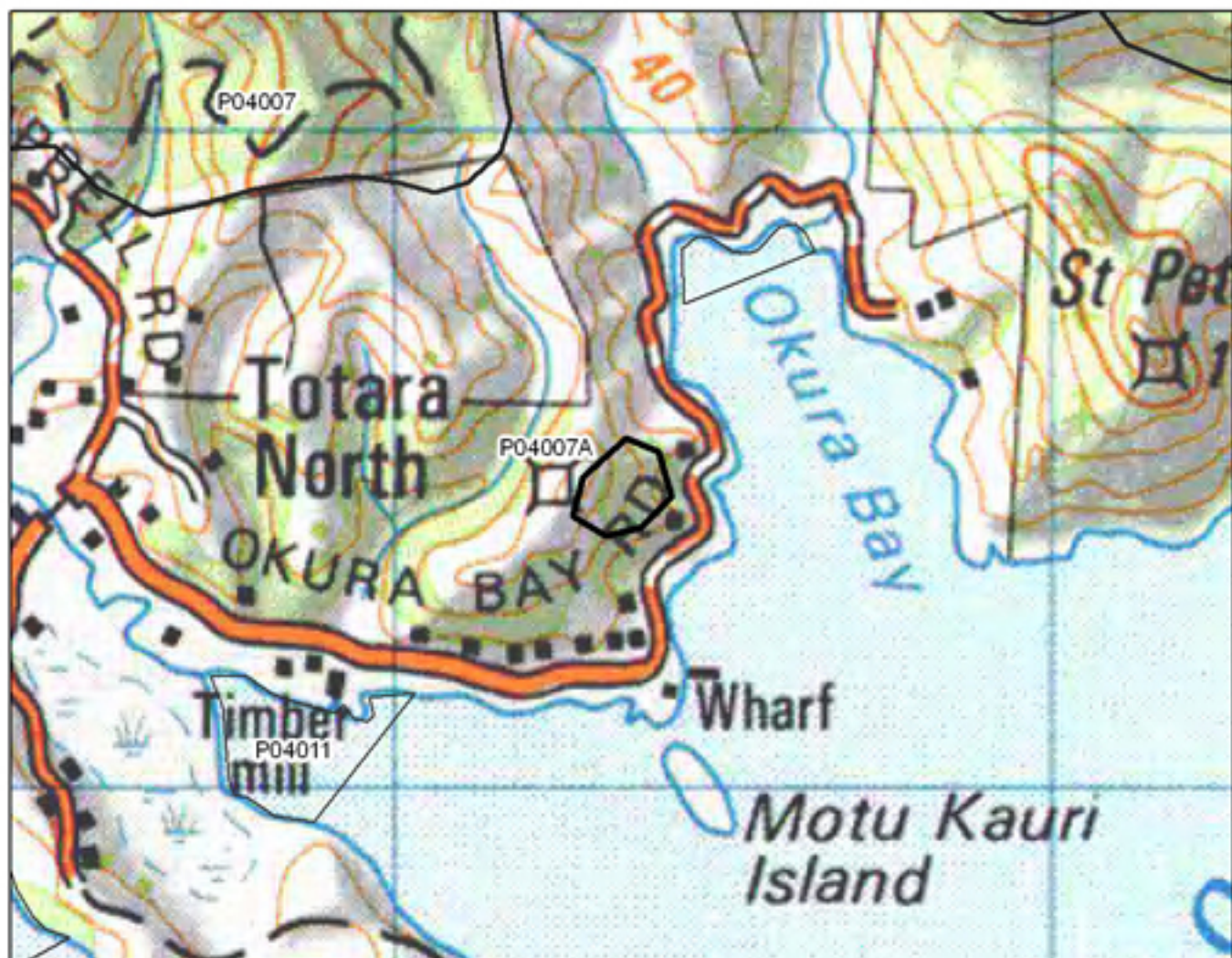


P04007 North Whangaroa

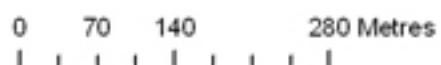
0 750 1,500 3,000 Metres

S= Shrubland
 F= Forest
 W= Wetland
 E= Estuarine





P04007A Okura Bay



- S= Shrubland
- F= Forest
- W= Wetland
- E= Estuarine

