

Conservation of iron and steelwork in historic structures and machinery

Maintenance handbook

Willie L. Mandeno

Opus International Consultants Ltd, PO Box 12003, Thorndon,
Wellington 6144, New Zealand. Email: willie.mandeno@opus.co.nz.

Published by
Science & Technical Publishing
Department of Conservation
PO Box 10420, The Terrace
Wellington 6143, New Zealand

Cover: The refurbished Davidson Locomotive, West Coast. *Photo: Jim Staton, Greymouth Area Office, Department of Conservation.*

All photographs included in this publication are the author's, unless otherwise stated.

Individual copies of this book are printed, and it is also available from the departmental website in pdf form. Titles are listed in our catalogue on the website, refer www.doc.govt.nz under *Publications*, then *Science & technical*.

© Copyright July 2008, New Zealand Department of Conservation. This paper may be cited as:
Mandeno, W.L. 2008: Conservation of iron and steelwork in historic structures and machinery.
Department of Conservation, Wellington. 33 p.

ISBN 978-0-478-14438-3 (hardcopy)

ISBN 978-0-478-14439-0 (web PDF)

This publication has not been formally peer reviewed.

This text was prepared for publication by Science & Technical Publishing; editing by Amanda Todd and layout by Sue Wilkins. Publication was approved by the General Manager, Research & Development Group, Department of Conservation, Wellington, New Zealand.

In the interest of forest conservation, we support paperless electronic publishing. When printing, recycled paper is used wherever possible.

CONTENTS

1.	Background	5
<hr/>		
2.	Corrosion	5
<hr/>		
2.1	Introduction	5
2.2	Corrosion fundamentals	5
2.3	Corrosion environments	7
2.4	Corrosion prevention	7
3.	Protective coatings	9
<hr/>		
3.1	Mechanisms	9
3.2	Surface preparation	9
3.3	Coating types	11
3.4	Metallic coatings	11
3.5	Inorganic coatings	12
3.6	'Soft' coatings	12
3.7	Oil-based coatings	12
3.8	Bituminous coatings	13
3.9	Alkyd paints	13
3.10	Epoxy coatings	14
3.11	Urethane coatings	14
3.11.1	'Two pack' urethanes	14
3.11.2	Moisture cure urethanes	15
3.12	Vinyls and chlorinated rubber	15
3.13	'Acrylic' coatings	15
3.14	Rust 'converters'	16
3.15	Vapour phase inhibitors (VPI)	16
3.16	'Approved' coatings	17
3.17	Further reading	17
4.	Conservation	18
<hr/>		
4.1	Constraints	18
4.2	Initial assessment	19
5.	Case histories	20
<hr/>		
5.1	Fort Dorset Observation Post	20
5.2	Stamper battery	20
5.3	Hauptiri Steam Shovel	21
5.4	Big River Sawmill Robey Engine	21
5.5	Denniston	21
5.6	Coal wagons	22

5.7	Reefton Visitor Centre	22
5.8	Urapa Fence, Taranaki	22
5.9	Mahinapua Creek Railway Bridge	23
5.10	Davidson locomotive	23
6.	Bibliography	24
<hr/>		
6.1	Reference Standards	24
6.1.1	Australian Standards	24
6.1.2	Australian and New Zealand Standards	24
6.1.3	International Standards	24
6.2	Reference texts and background reading	24
6.2.1	Corrosion	24
6.2.2	Protective coatings	24
6.2.3	Miscellaneous	25
Appendix 1		
<hr/>		
	Products and service providers	26
Appendix 2		
<hr/>		
	Protective Coating Specifications	27

1. Background

This handbook has been prepared to provide guidance on the basic principles and techniques involved in the preservation of historic iron and steelwork standing outdoors in New Zealand. The suitability of different processes and coating materials for the protection of heritage structures and machinery are discussed. Marine structures, shipwrecks and artefacts in museum storage are not specifically included.

2. Corrosion

2.1 INTRODUCTION

Corrosion is not a new problem; it has existed since man first began to make and use metals. It has been stated that worldwide, 1 tonne of steel is converted to rust approximately every 90 seconds. The deterioration of iron and steel is a natural process through which these man-made materials are converted back to their original form as oxides of iron. To preserve historic iron and steel relics, the electrochemical reactions that occur on the surface of metals need to be interrupted. This can be achieved by:

- Keeping the surface dry, either by covering the surface with an impermeable barrier coating or by enclosing the relic in a watertight structure and preventing condensation.
- Changing the surface condition by chemical or electrical means, so that it remains in a 'passive' state, e.g. by coating it with a paint containing inhibitive or sacrificial pigments, or by using cathodic protection when the relic is immersed or buried in soil or damp concrete.
- Insulating it from sources of electrical current, such as more 'noble' or anodic materials, e.g. copper, which can cause galvanic or bi-metallic corrosion, or stray current corrosion. A continuous, non-conductive coating will help to insulate the more electrically active parts of a surface (e.g. welded or stressed areas) from the less active or more anodic parts.

2.2 CORROSION FUNDAMENTALS

The corrosion of metal is essentially an electrochemical reaction. To stop it or slow it down, it is desirable to understand the basic principles of how corrosion occurs. The process is the same as is involved in a battery, where stored chemical energy is released as electrical current when materials change their form. Iron and steel are made from iron ore in a reduction process, which uses a lot of energy (c. 3 tonnes of coal are used to make 2 tonnes of iron). This process is reversed by natural oxidation, which can occur simply

by the contact of ferrous metals with air and water, and which is powered by the energy released from the conversion of iron back to its natural form as iron ore or rust. Mild steel corrodes more rapidly than wrought iron and cast iron, as more energy is used in its manufacture.



Figure 1. Stamper battery, Bendigo Reserve, Otago.

Water provides a path for ion transfer between anodes (the areas where metal is lost) and cathodes (the other surface areas), where released electrons are consumed to form oxides and hydroxides. The wetter the environment, the faster the reaction rate, which partly explains why bare steel sitting outdoors on the West Coast of New Zealand can corrode at $> 25 \mu\text{m}/\text{year}$, whereas in Central Otago corrosion occurs at $< 10 \mu\text{m}/\text{year}$ (AS/NZS 2312). The pictured stamper battery in the Bendigo Reserve, Central Otago (Fig. 1) has undergone very little corrosion.

For corrosion to occur, oxygen (from air) is also required to allow oxides to form at the cathodes. Therefore, corrosion is very slow if steel is deeply buried or submerged. If, on the other hand, the conductivity of surface water is increased by dissolved salts, especially chlorides, the current flow and hence the corrosion rate is increased. When iron and steel are kept dry, corrosion will cease. Conversely, surfaces that are shaded by vegetation or in contact with soil, and thus remain damp for longer periods, will corrode at a faster rate than those that dry more quickly.

As in a battery, there is potential difference (measured as a voltage) between the anodes and cathodes that drives the current flow. On a steel surface, the crystalline structure, effects of local stress (from bending, welding, etc.) and different levels of oxygen (due to surface contamination) result in sufficient differentiation to create this potential. Corrosion current can also be caused by an external source of potential, such as when the structure is in electrical contact with a more cathodic material, e.g. copper. If the joint is bridged by conductive liquid (known as an electrolyte), this will set up what is virtually a battery, where the steel becomes the anode. According to Faraday's Law, corroding steel will generate a current of $0.11 \text{ A}/\text{kg}$ metal lost each year; conversely, an earth leakage current of just $1 \text{ mA}/\text{year}$ will remove approximately 9 g (or 70 mm^3) of metal at the exit point.

This process can be reversed when steel (or iron) is in contact with a more anodic material such as zinc, aluminium or magnesium. In this case, the steel becomes the cathode and is protected as the zinc corrodes. This is the principle of cathodic protection, where sacrificial anodes are used to protect boat hulls or buried pipelines. Zinc is also used to protect steel in this way by applying it as a coating, e.g. by electroplating, hot dip galvanizing, or using metallic zinc dust in priming paint.

For a more detailed discussion of corrosion mechanisms, refer to one of the standard reference texts listed in the Bibliography.

2.3 CORROSION ENVIRONMENTS

As well as increasing the conductivity of the electrolyte, marine salts, especially chlorides, also act as corrosion catalysts, as they disrupt protective surface films (e.g. they will initiate pitting of aluminium and so-called 'stainless' steel). When wind-borne salts are deposited on metal surfaces, the salts will absorb moisture if the relative humidity is $> 70\%$, as this is sufficient to form a conductive layer between anodes and cathodes, allowing the electrochemical reaction to continue on apparently dry surfaces (Duncan & Ballance 1988; Spence et al. 1992). This explains why the corrosion of metals is more rapid in areas close to the sea and can be up to seven times more severe on surfaces that are sheltered from rain washing (King & O'Brien 1995). Edges and crevices are worst affected because of the phenomenon known as 'evaporative concentration'—as moisture evaporates, any dissolved salts become concentrated in the locations that stay wet the longest.

The performance of protective coatings on structures will depend on the corrosivity of the macro-environment, which is classified using an international scale specified in the International Standard ISO 9223 and also discussed in the joint Australian/New Zealand Standard AS/NZS 2312. 'C5' is the most severe classification, and is defined as where corrosion occurs at a rate of $> 50 \mu\text{m}/\text{year}$ in the first year; this typically occurs along the coast and extending 0.1-1 km inland, depending on prevailing winds and the existence of surf beaches. At 10-50 km inland, corrosion will be $< 25 \mu\text{m}/\text{year}$, and in very sheltered dry areas, such as Central Otago, it will be $< 10 \mu\text{m}/\text{year}$. However, micro-environmental effects on shaded or sheltered surfaces will increase these rates and so need to be considered when specifying the protective coating. In addition, if pitting occurs, typically it may be up to three times greater than the average rate of corrosion.

2.4 CORROSION PREVENTION

A simple way to reduce or arrest corrosion is to modify the environment around the iron or steel. The removal of oxygen is usually impractical; one exception to this is the removal of oxygen from water used in power station boiler tubes, which is achieved by using a scavenging chemical such as hydrazine.

Figure 2. Robey winding engine at the Big River Mine.



Moisture can be prevented from contacting the surface in a number of ways. The ultimate solution is to relocate the iron and steel into a dry environment or build an enclosure around the item, as was done for the Robey winding engine at the Big River Mine, just south of Reefton (Fig. 2). However, in coastal locations, shelters that are not fully enclosed can actually accelerate corrosion by preventing rain from washing wind-borne marine salts from contaminated surfaces.

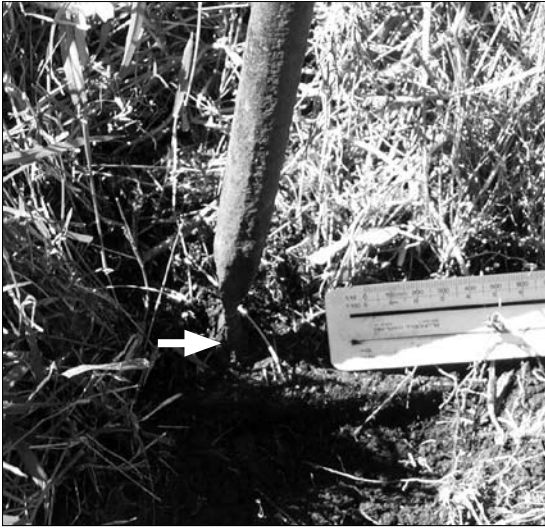


Figure 3. Example of 'ring-bark' corrosion .

The 'time-of-wetness' controls the rate of corrosion and can be reduced by providing drain holes in members, or sloping surfaces of bases to eliminate ponding, and by removing adjacent vegetation to prevent shading and promote drying. Items should be mounted clear of the ground or on a bed of free-draining gravel that is kept free of weeds. If an iron or steel item is in contact with timber or concrete, any crevice should ideally be sealed to prevent the entry of moisture. If it enters the ground, the interface with the soil or foundation also requires some form of barrier protection, to prevent 'ring-bark' corrosion where it enters the soil, as illustrated in Fig. 3. In most environments it is also beneficial to keep surfaces clean, as deposits of dirt, algae and lichens will retain moisture, increasing the time of wetness, and will also

provide sites of differential aeration, which create potentials that drive the corrosion reaction.

In special circumstances it is also possible to chemically modify or 'passivate' the surface (e.g. by using vapour phase inhibitors or inhibitive pigments in paint), to provide a highly alkaline environment (e.g. by using a concrete encasement), or to electrically change its potential by using an impressed or sacrificial cathodic protection. It should be noted that cathodic protection systems will only protect steel that is buried or immersed, as an electrolyte is required to complete the electrical circuit between the structure and the anodes. However, the more usual technique to prevent corrosion is simply to apply a protective waterproof or barrier coating to the item.

3. Protective coatings

3.1 MECHANISMS

Coatings can provide protection through any combination of the following mechanisms:

- **Barrier action:** This has two effects. Firstly, it slows down the rate at which moisture and oxygen can reach cathodic areas of the metal and prevents the anodic reaction that releases electrons from occurring, as no moisture is available for the balancing reaction to occur at the cathode, during which the released electron is consumed to form oxides and hydroxides. Secondly, the barrier coat insulates the anode from adjacent or external cathodes, making the electrical circuit incomplete. Since all coatings are permeable to some degree, leaf-like pigments of micaceous iron oxide, glass or aluminium flake are sometimes added to form overlapping scales within the layer of paint, effectively increasing the distance moisture needs to travel to penetrate the coating. Different resins have different permeabilities: water-borne acrylics have the highest (which is why they are used on concrete to allow it to breathe and not blister); oil and alkyd paints (synthetic paints thinned with turpentine) have intermediate permeability; and high-performance vinyls, epoxies and polyurethanes have the lowest.
- **Sacrificial protection:** This is where zinc metal is used as a solid coating (through galvanizing, electroplating, or using a thermal metal spray) or as closely packed metallic particles in a zinc-rich paint.
- **Passivation:** This is achieved by incorporating slightly soluble corrosion-inhibiting chemicals, such as zinc phosphate, as pigments in metal priming paint. These are dissolved by moisture travelling through the film and inhibit the anodic or cathodic corrosion reactions, and thus 'passivate' the metal surface.

3.2 SURFACE PREPARATION

Since nearly all coatings are permeable to some degree, it is important that the surfaces are cleaned to remove any salts that could draw moisture through the film by osmotic action and could also disrupt passive surfaces. The former can result in blistering and eventual rupture of the coating, and the latter can result in pitting. In addition, some salts are capable of forming a thin but very conductive layer on the surface of otherwise dry steel, by adsorbing moisture from the atmosphere (i.e. are hygroscopic).

Ideally, rust and iron scale should be fully removed before protective coatings are applied. This is essential to obtain the full benefit of primers pigmented with metallic zinc dust, as the zinc needs to be in electrical contact with the metal substrate to provide sacrificial (cathodic) protection. Where the metal has been exposed to marine salts, it is also necessary to remove any scale,

so that water-soluble salts that would otherwise be trapped in the bottom of any pits in the metal surface can be removed. Failure to do this will result in the early breakdown of the coating in damp environments. Removal is best achieved by slurry blasting, where an abrasive medium is introduced into a jet of water, or by alternate water blasting and dry abrasive blasting. Addition of a surfactant (e.g. a non-ionic detergent) to the washing water can assist in 'wetting' of the surface and improving rinsing efficiency. High- or ultra-high-pressure water jetting, where nozzle pressures of above 70 MPa (10 000 psi) or 210 MPa (30 000 psi) respectively are used, are also effective at removing salts from pitted steel.

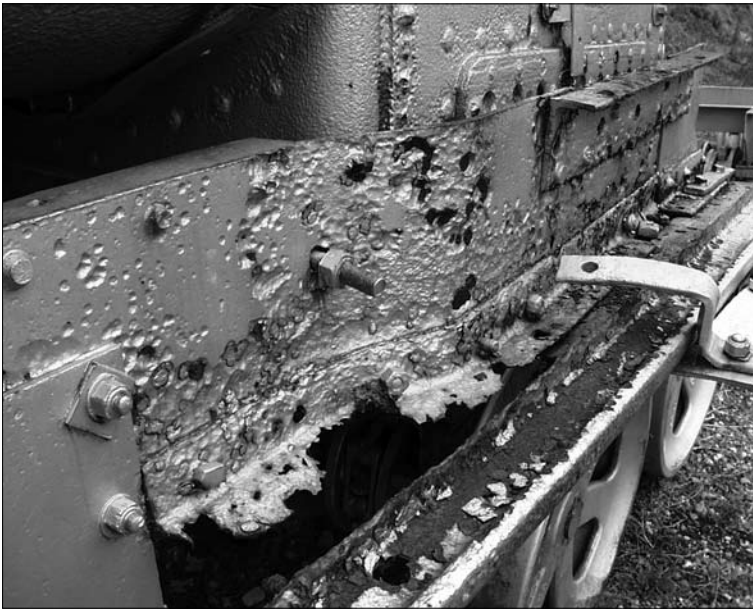


Figure 4. Premature failure of the painted surface on the Davidson Locomotive, West Coast.

Because salts can be concentrated in pits under rust, they cannot be effectively removed by low-pressure rinsing unless the rust is removed first. This is why the so-called rust-converters are not effective on corroding iron and steel near the coast. When using these acid-based materials, it is necessary to ensure that any unreacted acid is removed by rinsing and is prevented from getting into crevices. The removal of both visible and non-visible surface contaminants, which has traditionally been achieved by a cycle of abrasive blasting and rinsing, is therefore a critical step in maintenance painting; otherwise premature failure of the coating may occur, as shown in Fig. 4.

A typical maintenance painting specification clause will require cleaned surfaces to be primed as soon as possible after cleaning and before re-rusting occurs, to minimise the risk of recontamination. However, unless chemical testing for salts is also carried out, there is the risk that some salts may still be on the surface and could be painted over. A practical procedure to avoid this is to leave the first batch of cleaned steel overnight for observation before painting. If any salts are still present, the pits will turn black, indicating that a three-stage process of blast, rinse and re-blast is required. It has been found to be beneficial to leave contaminated steel overnight in a damp environment after blasting, as this allows the chlorides to move out of the pits, enabling them to be more easily removed by subsequent cleaning.

While abrasive blast cleaning by dry blasting or wet slurry blasting is ideal for rust removal and also creates a surface profile that anchors the protective coating, the complete removal of rust is not always practical and abrasive blasting can also be damaging to thin sections. In these situations, the surface should first be scraped and brushed with hand or power tools, then thoroughly rinsed to remove as much embedded salt as possible. In this situation, it is important not to polish or burnish the surface. A rough surface improves the adhesion of all coatings by creating a mechanical anchor and also increases the effective surface for chemical bonding. Once dry, hand-prepared surfaces should be treated with a penetrating sealer or primer and/or a surface tolerant barrier coat.

For a more comprehensive discussion on cleanliness standards used in surface preparation work, refer to AS/NZS 2312 or the reference Standards listed in the Bibliography.

3.3 COATING TYPES

Protective coatings can be categorised in various ways, including:

- Method of protection: Sacrificial, inhibitive or barrier action, as previously discussed.
- Chemical type: Metallic or non-metallic, with further subdivisions into inorganic or organic.
- Generic type: Type of resin or 'binder' (e.g. wax, oil, alkyd, acrylic, bituminous, epoxy or urethane). These are discussed in the following sections.
- Method of 'cure': Solvent evaporation or chemical reaction, with further subdivisions into oxidation or polymerisation with or without heat.
- Type of solvent: Water, organic solvents or 'solventless'.
- Function: The 'primer' provides good 'wetting' of the substrate, passivation and adhesion; the 'tie coat' gives compatibility and adhesion with existing coatings where no primer is required; the build or undercoat gives impermeability; and the 'finish coat' gives colour, gloss, UV resistance if exposed to sunlight, and chemical and solvent resistance if subject to graffiti, allowing its removal by solvent cleaning.

3.4 METALLIC COATINGS

Tin, zinc, cadmium and chromium are commonly used metallic coatings. They are applied as a thin layer (typically 5–15 µm) by electroplating to provide a barrier to corrosion. Zinc or aluminium and their alloys may also be applied by a thermal spray process (i.e. arc or flame spray) to suitably abrasive blast-cleaned steel and will also provide sacrificial (galvanic) protection where the barrier layer is damaged. For further information on thermal spray, refer to ISO 2063.

Zinc may also be applied to iron and steel by the 'hot-dip' galvanizing process (refer to AS/NZS 4680), where a layer of relatively soft, pure zinc over a very hard zinc-iron alloy coating (typically 50–100 µm thick) is formed on the immersed surface. Preparation for galvanizing involves dipping in a bath of acid to remove rust before rinsing, fluxing and dipping in a bath of molten zinc. As the zinc is maintained at between 445°C and 465°C, it is important that enclosed items are drilled to allow the venting of steam on immersion and drainage of molten zinc on withdrawal. There is also the risk of distortion when items are asymmetrical or when thick and thin materials are combined.

Metallic coatings are mainly used for new steelwork at the time of fabrication, although thermal sprayed metal may be used *in situ* for the long-term protection of large items such as axles or steel beams.

3.5 INORGANIC COATINGS

Silicates and titanates are relatively modern coatings that, unlike organic coatings, are not based on carbon compounds and so have a much higher resistance to heat and sunlight. They tend to be used for the protection of steel exhaust flues, but inorganic zinc silicate (IZS) has also been widely used both as a sacrificial primer in high-performance paint systems and as a stand-alone long-life protective coating (e.g. on tanks and bridge beams). Items need to be prepared by abrasive blasting to a 'near-white' condition or an 'Sa 2½' standard. For further information on IZS, refer to AS/NZS 3750.15.

3.6 'SOFT' COATINGS

Coatings based on natural or synthetic wax and grease provide a soft, flexible barrier to moisture and are widely used to give temporary corrosion protection to machined parts that are kept in storage and in enclosed automotive body panels. Some formulations can also be directly applied to hand-cleaned rusting metal that is not subject to physical damage or weathering. Examples of proprietary formulations include 'Goldseal', 'Tectyl 506' and 'Res-Q-Steel'. These are relatively low-cost materials that are applied at a thickness of up to 1 mm. However, they are not recommended for surfaces that can be accessed by the public. Other thinner, wax-based coating materials that have water-displacing properties include Castrol's 'Rustilo DWX' and Shell's 'Ensis' fluids. Various manufacturers (e.g. Denso) produce a range of mastics and impregnated wrapping tapes based on petrolatum wax, which are widely used to protect buried steelwork or items that are in damp, sheltered environments.

3.7 OIL-BASED COATINGS

Plant and fish oils have been used in protective coatings since Roman times. They contain polyunsaturated fatty acids that can react with oxygen from the air to cross-link, which then provides a solid film (i.e. cure by oxidation). Boiled linseed oil mixed with lead oxide was used to protect iron-work in Victorian times and became the standard priming material for steel in the first half of the 20th century (e.g. the 'PWD No 2' formulation in New Zealand). Use of the faster drying lead-based derivatives 'HD441' and 'Seachrome' have only been discontinued relatively recently because of toxicity and environmental concerns. Linseed, tung, castor and fish oils are capable of acting as drying oils, and all have been used for making paints. Their most valuable property is their low viscosity and ability to penetrate crevices and saturate the surface of hand-cleaned steel. However, they have relatively low resistance to moisture vapour and chemicals compared with paints based on synthetic resins, and also provide nutrients for the growth of fungus and bacteria.

Examples of semi-drying oil products that can be overcoated with alkyd paint to improve their durability are Wattyl's 'Killrust Fishoilene' and Altex's 'RIPO (Rust Inhibiting Penetrating Oil)'.

3.8 BITUMINOUS COATINGS

Various types of waterproof coating have been made from coal tar and/or asphalt applied as a molten material or dissolved in solvent and applied as a paint. Pitch obtained from natural coal tar was used by the Vikings to caulk their ships and the first patent for coal tar obtained by coking coal was granted in 1681 in England. Asphalts can be mined from seams that are similar to coal and are also obtained during the refining of petroleum. Coatings are black due to the presence of colloidal carbon, and have been widely used over the last 200 years to provide excellent low-cost barrier protection to buried or immersed steelwork. Tars are also used as an inexpensive 'extender' in the manufacture of solvent-resistant coatings such as coal tar epoxy and tar urethanes. Tar enamel coatings are not normally used for items that are exposed to sunlight, as their surface 'chalks' (forms fine powder on surface) and 'alligators' (cracks), and also softens at temperatures above 38°C. Asphaltic coatings are more liable to chalk, and have lower water and solvent resistance, but because they are less prone to alligating they are more commonly used in roofing applications. All bituminous coatings are difficult to overcoat due to their tendency to 'bleed through' finish coats, and can only be maintained with tar- or oil-based coatings. Because of their tendency to soften when warm, they are best removed by water jetting rather than abrasive blasting. Typical bituminous coatings (water-based emulsions or solvent-based products) are found in the 'Flintkote' range of coatings available from Shell NZ Ltd.

3.9 ALKYD PAINTS

In the past, natural resins such as kauri gum were dissolved in solvent to produce 'lacquers' and were heated with drying oils to produce 'varnish'. Since 1927, alkyds—a range of synthetic resins made from drying oils—have been available. Alkyds are now the most commonly used binders for air-oxidising paints. Alkyd paints are the easily applied, turpentine-thinned enamels which are commonly used for painting timber and steel. Metal primers are pigmented with rust-inhibiting chemicals such as zinc phosphate, which has largely replaced zinc chromate (which is carcinogenic when its dust is inhaled). Zinc chromate, in turn, replaced the toxic but more effective lead-based pigments.

To reduce their permeability and improve weatherability, finishing paints for steelwork are often pigmented with micaceous iron oxide (MIO). This naturally occurring flake-like material is used in alkyd enamel paints such as Dulux 'Ferrodor', which was widely used as a topcoat for many road and railway bridges, and other industrial steel structures throughout the Commonwealth in the late 20th century.

Alkyd paints are generally not suitable for immersion or application to concrete as they have poor alkaline resistance. Oil-based coatings should also not be applied directly to galvanized surfaces, as they may delaminate (due to a reaction with the zinc, forming weak zinc soaps). Their main use is as decorative paints, but they are also able to provide long-life protection to iron

and steel in mild to moderate environments. Recommended primers/MIO finish coats for hand-prepared steelwork include Akzo Nobel's 'Interprime 198'/'Interlac 192', Altex's 'High Build Rust Barrier'/'Isotal Ferrox', and Resene's 'Rust-Arrest'/'Mica Bond'.

3.10 EPOXY COATINGS

Epoxy coatings are based on cross-linked polymers that are formed by the reaction of an epoxy resin with a variety of different curing agents. As a group, these have good chemical, solvent and water resistance, and excellent adhesion. They can also provide high-build coatings with little or no solvent. However, these 'two pot' materials have a limited 'pot-life' after mixing and can be difficult to recoat when fully cured. Their surface chalks more readily than alkyds, and they generally require favourable conditions for application and curing (i.e. dry and temperatures above 13°C). Coal-tar epoxy used to be widely used as an effective and economical barrier coat for immersed steelwork; however, its use has been largely discontinued because of the carcinogenic properties of the coal tar pitch used in its manufacture.

Around 1990, a group of 'surface tolerant' products known as epoxy-mastics (see AS 3750.1) were introduced for the maintenance painting of steel structures for which ideal surface preparation could not be achieved. The first on the market was Carboline's aluminium-pigmented 'Carbomastic 15'. A New Zealand product developed for the maintenance of corroding galvanized iron roofs is Resene's 'Alumastic'. Similar products are now available from most manufacturers. However, their performance as a barrier coat is dependent on obtaining a continuous film of adequate build (which is best achieved by spray painting) and on the standard of surface preparation.

Epoxy primers may be pigmented with finely ground zinc metal as a type of organic, 'zinc-rich' primer (see AS/NZS 3750.9) that is commonly used to repair damaged galvanizing. They are also used as an alternative primer to inorganic zinc silicates as part of many long-life industrial coating systems in which the zinc reduces undercutting of the film at points of damage and extends its life. Zinc-rich primers are particularly useful in marine environments.

3.11 URETHANE COATINGS

Urethane resins are another type of cross-linked polymer used for protective coatings, which have better weatherability and flexibility than epoxies. They can be mixed with alkyds (e.g. they often form the basis for aerosol 'spray' paints), but normally occur as one of the two categories discussed below.

3.11.1 'Two pack' urethanes

'Two pack' urethanes (refer to AS/NZS 3750.6) are used as architectural, marine and automotive finish coats, as they are one of the best finish coats for retaining gloss and colour. They are often modified with acrylic to improve their self-recoatability (e.g. Resene's 'Uracryl' range) or may be used

unmodified as anti-graffiti coatings, where maximum solvent resistance is required during the removal of unwanted paint with solvents. Respiratory protection is required when spraying to prevent the inhalation of hazardous isocyanate aerosols, which are present before the coating cures.

3.11.2 Moisture cure urethanes

Moisture cure urethanes (MCUs; refer to AS/NZ 3750.18)) are single-pack products that are available as clear coat materials and are commonly used to finish internal timber floors. They are also used in the full range of industrial coatings, e.g. as penetrating primers, zinc-rich primers, (refined) tar-based immersion coatings and MIO-pigmented finishing coats. While relatively expensive, MCUs can be applied under most weather conditions, including at low temperatures and high humidities, and have early shower and immersion resistance. In addition, their cure can be accelerated to allow rapid recoating. MCU systems are widely used to 'encapsulate' old lead-based coatings, e.g. for maintenance painting on old steel bridges. A well-known brand is the 'Wasser' range of coatings, available from Fortec Paints, and used since 1999 for maintenance painting of the Auckland Harbour Bridge.

3.12 VINYL AND CHLORINATED RUBBER

Vinyls and chlorinated rubber are also single-pack 'non-convertible' products, which have good resistance to freshwater, marine and chemical environments. Co-polymer vinyls are still used as maintenance coatings on galvanized steel structures, and from 1960 to 1990 'solution' vinyl multicoat systems were widely used in New Zealand on immersed steelwork, e.g. in the interior of penstocks. Chlorinated rubber paints have very similar properties and both have excellent self-recoatibility properties as they 'cure' by solvent evaporation. These are now less widely used because of their relatively high solvent content and the higher cost of resin manufacture due to environmental constraints.

3.13 'ACRYLIC' COATINGS

Water-borne acrylic coatings are generally only used as decorative finish coats on steel, as they are relatively permeable (and so are more prone to algal build up on shaded surfaces) and solvent sensitive. MIO-pigmented versions are available, e.g. Resene's 'Hi Glo Micaceous', while coloured acrylics have very good resistance to fading and chalking when exposed to sunlight. Solvent-borne single-pack or 'catalysed' acrylics are also available as durable 'isocyanate-free' alternatives to urethane finish coats.

3.14 RUST 'CONVERTERS'

Rust converters are strongly promoted by their manufacturers as alternatives to abrasive blast cleaning. However, despite superficially strong evidence in their favour, no reliable, independent proof is currently available to show that any of them are more cost-effective than traditional paint coatings, and most are markedly inferior in performance. A correspondence from the Department of Scientific & Industrial Research to the Ministry of Works & Development in 1983 concluded that tolerant inhibitive primers are to be preferred when blast cleaning is not possible. The Australian and New Zealand standard AS/NZS 2312 also cautions against their use. Because tannin-based materials are often cited in conservation literature, a comment on their use was sought from Dr Rob Francis of Melbourne, who did his PhD thesis at Monash University on rust 'conversion' materials. He provided the following statement:

'Tannic acid and other tannin based (so-called) rust converters are of limited use for treating rusted steel. There is a reaction between the tannin and ferric ions to produce a black-purple colouration on the surface, but the protection offered is limited. They do have the advantage that they are relatively safe to use, environmentally attractive and unlikely to damage adjacent materials such as wood. If the item is kept under dry conditions, such treatment may be acceptable. However, for exterior or other damp or wet environments, such coatings will quickly break down. They have no effect on salts in the rust, which is the major reason for continued rusting. They are porous and allow oxygen and moisture through the coating. Their adherence is poor, and subsequent coatings are not bonded strongly to the steel. Moreover, underneath a paint or coating, the unreacted tannin absorbs moisture causing osmotic blistering.'

3.15 VAPOUR PHASE INHIBITORS (VPI)

Vapour phase inhibitors (VPI) are also known as volatile corrosion inhibitors (VCI). They are materials with a low vapour pressure that sublime and are chemically adsorbed onto a metal surface to form a thin protective layer of crystals that is one or two molecules thick. They dissolve to form a thin protective film in the presence of minute quantities of moisture. They are typically used in enclosed spaces to provide protection during long-term storage, and can be supplied impregnated into coatings, wrapping tapes, foam emitters or powders that can be blown or fogged into a space. They have potential application in the preservation of old boilers, where the vapour can be prevented from escaping into the atmosphere. A major US manufacturer of these products is the Cortec Corporation, which is represented in New Zealand by Savcor ART NZ Ltd.

3.16 'APPROVED' COATINGS

In 1997, the NZ Paint Approvals Scheme was harmonised with the Australian Paint Approval Scheme (APAS, formerly known as the Government Paint Committee or GPC). APAS is administered by the Australian Government Analytical Laboratories (part of CSIRO), based in Melbourne. The schemes have since merged and APAS maintains a List of Approved Products (over 3500) that are made by 'Recognised Manufacturers' in Australia and New Zealand. These manufacturers have accredited quality systems and manufacturing procedures, and their approved coatings have been found to comply with the criteria and performance requirements of their relevant specification. Further information on the scheme can be found at www.apas.gov.au (viewed 23 June 2008).

It is recommended that coatings be obtained from an APAS-recognised manufacturer and, where available, APAS-approved coatings should be preferred. However, while the use of 'approved' coatings is desirable, it is often more important that the surface be correctly prepared and the coating correctly applied.

Appendix 1 contains contact details of New Zealand paint manufacturers and distributors, whose products have been mentioned in this handbook.

3.17 FURTHER READING

An excellent general reference for the preservation of above-ground iron and steel that was recently updated and is readily available is the *Guide to the protection of structural steel against atmospheric corrosion by the use of protective coatings*, which was published as AS/NZS 2312 in 2002. This, along with its 2004 Amendment, may be purchased from Standards New Zealand, or borrowed or inter-loaned via a public library. A companion document to AS/NZS 2312 and recommended reading is the HERA Report R4-133 (Clifton 2005), *New Zealand Steelwork Corrosion Coatings Guide*, which is available from the NZ Heavy Engineering Research Association in Manukau City. Other key references on protective coatings are included in the Bibliography.

4. Conservation

4.1 CONSTRAINTS

The following factors need to be considered when preserving historic iron and steel structures and fittings:

- **Access:** Many sites are remote with difficult access, which limits the use of compressed air tools for surface preparation (e.g. abrasive blasting). Rotary wire brushes could be powered by a mobile generator, but many locations, such as the sawmill engine for the Big River Quartz Mine near Reefton, may be limited to preparation by hand tools such as scrapers and wire brushes. Remote access also makes rapid curing systems preferable, so that a primer and finish coat can be applied in the same day.
- **Deterioration:** Many relics, especially in coastal locations, are in an advanced state of decay. Successful preservation will require the removal of salts from pits that may have been previously painted over. In some cases, modification or reconstruction will be necessary to prevent structural failure.
- **Climate:** High-rainfall areas, such as the West Coast, have limited weather windows during which maintenance can be undertaken and may require the use of moisture-tolerant coating systems. In marine climates, surfaces sheltered from rain will need to be thoroughly washed to remove wind-borne salts before treatment.
- **Appearance:** The conflict between preserving rusting surfaces in a corrosive environment and retaining their current appearance needs to be resolved. It is recommended that surfaces be restored to their original appearance using modern coatings that are more durable (where the fabric is still in sufficiently good condition).
- **Hazardous material:** Much historic iron and steelwork was primed with toxic, lead-based paint and, in more recent times, with zinc chromate-pigmented material. Appropriate care is required to protect workers, the public and the environment when removing this material.
- **Budget constraints:** A lot of restoration work is undertaken by voluntary organisations, which have limited budgets for purchasing high-performance materials, employing industrial painting contractors or hiring suitable equipment. In these situations, systems that have lower durability but that can be readily applied and frequently maintained may be more appropriate.

Some recommended protective coating specifications are listed in Appendix 2.

4.2 INITIAL ASSESSMENT

When assessing an item for conservation, it is important that the following information is obtained:

- **Material type:** Attempt to identify or describe the different materials involved, e.g. if magnetic and covered in red rust, it is probably ferrous material, but is it cast iron, wrought iron or steel (or perhaps a mixture)?
- **Location:** Record the map reference and note how accessible the site is, e.g. how close to wheeled access or a formed track. Also note any constraints in bringing in equipment or providing power for maintenance.
- **Environment:** Is the item in sun or shade, exposed to drying winds or sheltered, subject to wind-borne surf spray or onshore winds, or exposed to high humidity from cloud, fog or ponded water? How easy will it be to modify this, e.g. by clearing grass or weeds, or removal of re-growth of scrub or bush to reduce the 'time of wetness'?
- **Support:** Is the item partially buried in the ground, embedded in concrete, bolted to a base, or free standing?
- **Transport:** Is it practical to move the item to an engineering workshop for maintenance? Establish the weight and dimensions of the largest component.
- **Condition:** Record the level of deterioration with photographs. This will assist in deciding whether restoration is feasible or what type and level of preservation is appropriate.

5. Case histories

5.1 FORT DORSET OBSERVATION POST

The Fort Dorset Observation Post is located on a hill near the Pass of Brenner, overlooking the entrance to Wellington Harbour. Figure 5 shows the view out to Pencarrow Head Lighthouse; the perforated steel edge beam that supports the concrete roof slab can be seen in the foreground. The roof is a cantilevered structure and so does not have any props (presumably because these could interfere with military observations). There has been a significant loss of section at the point of maximum stress in the cantilever beam, which is a potentially hazardous situation.

Figure 5. View from the Fort Dorset Observation Post out to Pencarrow Head Lighthouse, Wellington.



This site is a classic example of severe corrosion of structural elements on which protective coatings have not been maintained, located close to the sea and in a sheltered micro-environment where wind-borne salts are not removed by rain-washing.

5.2 STAMPER BATTERY

The Central Otago environment is at the lower end of the scale of corrosivity. Figure 6 shows mill scale on a steel washer on the 'Come-in-Time' stamper battery in the Bendigo Reserve area, which is still largely intact after over 100 years. At this site, corrosion is much less of a problem than the theft of components that can be carried away.



Figure 6. A steel washer on the 'Come-in-Time' stamper battery in the Bendigo Reserve Area, Central Otago.

5.3 HAUPIRI STEAM SHOVEL



Figure 7. The Haupiri steam shovel, West Coast.
Photo: Jim Staton, Greymouth Area Office, DOC.

The Haupiri Steam Shovel is a current conservation project on the West Coast. Since the time of the photograph (Fig. 7), the surrounding vegetation has been removed and the steam shovel is now being treated each year with Ensis oil, which is a short-term preservative. This short-term measure will continue until funding for a longer term protective treatment is available.

5.4 BIG RIVER SAWMILL ROBEY ENGINE



Figure 8. The patent Robey fixed engine.

Even more of a challenge for preservation is the Robey semi-portable underslung sawmill engine (Fig. 8), which used to provide power for the Golden Lead Creek Sawmill. This sawmill produced timber for the nearby coalmines and the Big River Quartz Mine. The engine's remote location (c. 24 km south of Reefton near the end of the Big River Road) has preserved it from scrap metal merchants and souvenir hunters.

5.5 DENNISTON



Figure 9. Cable wheels, located near the top of the Denniston Incline, West Coast.

The photo shown in Fig. 9 was taken in 2002 near the top of the Denniston Incline, with the Tasman Sea in the background. One of the advantages of the West Coast climate is that items such as the cable wheels on display are regularly rain-washed. Because they are exposed and have few crevices and low mass, they also dry out rapidly when mounted clear of contact with soil or wet vegetation.

The advantages of having open structures that are regularly washed and do not pond or retain moisture are also demonstrated by the condition of the tower bases for the nearby coal bucket cableway system. The original lead-based alkyd system is still providing adequate protection to the steel.

5.6 COAL WAGONS



Figure 10. 'Q-wagons', Greymouth.

Figure 10 shows an example of 'Q wagons', which are now exhibits in a heritage park in Greymouth. They were lifted off the bogies when they reached the wharf and had a bottom outlet for emptying into the ship. Some of the original bituminous coating provides protection in places but, as can be seen, some of the thinner sheet material has already corroded away, as a result of contact with wet coal.

5.7 REEFTON VISITOR CENTRE



Figure 11. Restored winding engine, Reefton Visitor Centre, West Coast.

As an example of what can be done, Fig. 11 shows a restored winding engine, which is located in the Reefton Visitor Centre. It is now protected from the damp and salty West Coast environment (and damage by vandals) by a full enclosure and a simple protective coating system using alkyd paint.

5.8 URAPA FENCE, TARANAKI



Figure 12. Urapa fence, Te Rua O Te Huia Pa Reserve, Onaero, Taranaki.

Figure 12 shows a historic Maori grave site on the Te Rau O Te Huia Pa Reserve at Onaero, 30 km east of New Plymouth. The grave fence is said to be an early example of prefabricated wrought iron dating from the 1860s that may have originated in Australia. Most of the metalwork is still in reasonable condition, but there has been severe corrosion and loss of section at ground level where it is usually damp. It has been recommended that a concrete plinth be cast around the base to protect the remaining ironwork.

5.9 MAHINAPUA CREEK RAILWAY BRIDGE



Figure 13. 'Howe Truss' bridge, West Coast.

This 'Howe Truss' bridge (Fig. 13) is located 5 km south of Hokitika and just 250 m from the sea. It was built in 1905 with steel bottom chords and iron truss rods, and was refurbished by the Department of Conservation (DOC) in April 2000. The following system was used for restoration: all exposed metalwork was abrasive blast cleaned to a 'near-white' finish (Sa 2½), primed with 75 µm of an epoxy zinc-rich primer, and top coated with 200 µm of an epoxy-mastic. The work was carried out by Gray Bros Engineering of Greymouth under the supervision of Jim Staton (then at Hokitika Area Office, DOC), using paint material and inspection services supplied by International Protective Coatings.

5.10 DAVIDSON LOCOMOTIVE



Figure 14. The Davidson Locomotive before restoration.

The Davidson Locomotive (Fig. 14) is thought to be the only surviving example of a locally built (i.e. at Hokitika) steam locomotive that was used on bush railways near Greymouth. Like the Mahinapua Creek bridge, this was also refurbished by Gray Bros Engineering in Greymouth under Jim Staton's supervision. After earlier attempts at painting with epoxy mastic (see Fig. 4), the locomotive was fully dismantled and new parts were fabricated where required. All of the metalwork was then abrasive blast cleaned, coated with 80 µm of zinc metal applied by arc spray, and finished with 120 µm of high-build epoxy (supplied by Altex Coatings). The end result is shown in Fig. 15.



Figure 15. The refurbished Davidson Locomotive. *Photo: Jim Staton, Greymouth Area Office, DOC.*

6. Bibliography

6.1 REFERENCE STANDARDS

6.1.1 Australian Standards

AS 1627 (series): Metal finishing—preparation and pretreatment of surfaces. Standards Australia, Sydney.

AS 3894 (series): Site testing of protective coatings. Standards Australia, Sydney.

6.1.2 Australian and New Zealand Standards

AS/NZS2310 2002: Glossary of paint and painting terms. Standards Australia, Sydney, and Standards New Zealand, Wellington. 34 p.

AS/NZS2312 2002: Guide to the protection of structural steel against atmospheric corrosion by the use of protective coatings. Standards Australia, Sydney, and Standards New Zealand, Wellington. 140 p. plus Amendment 1/2004. 10 p.

AS/NZS3750 (series): Paints for steel structures. Standards Australia, Sydney, and Standards New Zealand, Wellington.

AS/NZS4680 2006: Hot-dip galvanized (zinc) coatings on fabricated ferrous articles. Standards Australia, Sydney, and Standards New Zealand, Wellington. 28 p.

6.1.3 International Standards

ISO 2063 2005: Thermal spraying—zinc, aluminium and their alloys. International Organization for Standardization, Geneva. 12 p.

ISO 8501-1 2007: Visual assessment of surface cleanliness. International Organization for Standardization, Göteborg. 74 p.

ISO 9223 1992: Corrosion of metals and alloys—corrosivity of atmospheres—classification. International Organization for Standardization, Genève. 13 p.

6.2 REFERENCE TEXTS AND BACKGROUND READING

6.2.1 Corrosion

Boulton, L.H.; Wright, G.A. 1983: Fundamentals of metallic corrosion and its prevention. NZ Branch of the Australasian Corrosion Association, Auckland.

Duncan, J.; Ballance, J. 1988: Marine salts contribution to atmospheric corrosion. Pp. 316–326 in Dean, S.W. (Ed.): ASTM STP 965 Degradation of metals in the atmosphere. American Society of Materials and Testing, Philadelphia.

Evans, U.R. 1979: An introduction to metallic corrosion. 3rd edition. Arnold, London.

Fontana, M.B.; Greene, N.P. 1978: Corrosion engineering. McGraw-Hill, New York.

King, G.A.; O'Brien, D.J. 1995: The influence of marine environments on metals and fabricated coated metal products, freely exposed and partially sheltered. Pp. 167–192 in Kirk, W.W.; Lawson, H. (Eds): ASTM STP 1239 Atmospheric corrosion. American Society of Materials and Testing, Philadelphia.

Spence, J.W.; Haynie, F.H.; Lipfert, F.W.; Cramer, S.D.; McDonald, L.G. 1992: Atmospheric corrosion model for galvanized steel structures. *Corrosion* 48(12): 1009–1019. National Association of Corrosion Engineers, Philadelphia.

Uhlig, H.H.; Revie, R.W. 1985: Corrosion and corrosion control. Wiley, New York.

6.2.2 Protective coatings

Clifton, C. (Ed.) 2005: New Zealand Steelwork Corrosion Coatings Guide. HERA Report R4-133, NZ Heavy Research Association, Manukau City.

Eade, J. (Ed.) 1999: After-fabrication hot dip galvanizing. 15th edition. Galvanizers Association of Australia, Melbourne.

Hare, C.H. 1994: Protective coatings: fundamentals of chemistry and composition. SSPC (The Society for Protective Coatings), Pittsburgh.

Munger, C.G.; Vincent, L.D. 1999: Corrosion prevention by protective coatings. 2nd edition. NACE, Houston.

SSPC 2000: Painting manual, Vol. 2. Systems and specifications. 8th edition. SSPC (The Society for Protective Coatings), Pittsburgh.

SSPC 2002: Painting manual, Vol.1. Good painting practice. 4th edition. SSPC (The Society for Protective Coatings), Pittsburgh.

6.2.3 Miscellaneous

DOC (Department of Conservation) 2001: Historic heritage workshop proceedings (unpublished). Department of Conservation, Wellington.

Kemp, E.L.; Sande, T.A. (Eds) 1978: Historic preservation of engineering works. Proceedings of an ASCE Conference, New Hampshire.

Mandeno, W.L. 1991: Painting State Highway Bridges—past, present & future. *Journal of Protective Coatings & Linings* 8(1): 44–51.

Mandeno, W.L. 2003: Steel surface preparation standards. *Corrosion & Materials* 28(2): S5–S8.

Mandeno, W.L. 2006: Performance specified maintenance contract on the Auckland Harbour bridge—a review. Proceedings of Austroads 6th bridge conference, Perth.

Wright, L. 1993: Big River Quartz Mine. Friends of Waiuta Inc., Invercargill.

Appendix 1

PRODUCTS AND SERVICE PROVIDERS

The following is a list of coating manufacturers and distributors in New Zealand. It should be noted that this list is not exhaustive, but rather is intended as a good starting point for anyone wishing to restore or protect iron or steelwork. New Zealand manufacturers who are 'Recognised' by the Australian Paint Approvals Scheme (APAS) are denoted by an asterisk (*). Contact information is correct as at September 2007.

Akzo Nobel Coatings Ltd
Tel (09) 828 3009
Fax (09) 828 1129
Private Bag 19-995
Avondale, AUCKLAND
(Mfr. of 'International' coatings)

Orica NZ Ltd*
Tel (04) 576 6400
Fax (04) 576 6425
PO Box 30-749, LOWER HUTT
(Mfr. of 'Dulux' & 'ICI' coatings)

Altex Coatings Ltd*
Tel (07) 541 1221
Fax (07) 541 1310
PO Box 142, TAURANGA
(Mfr. of 'Devoe' coatings)

Polymer Developments Group Ltd
Tel 0800 999 001
Fax (09) 274 1405
PO Box 58-256
Greenmount, AUCKLAND
(Mfr. of 'Carboline' coatings)

Ameron NZ Ltd
Tel (09) 573 2100
Fax (09) 573 0634
PO Box 22-122
Otahuhu, AUCKLAND

Resene Paints Ltd*
Tel (04) 577 0500
Fax (04) 577 0603
PO Box 38-242, WELLINGTON

Fortec Paints Ltd
Tel (09) 444 7244
Fax (09) 444 3545
PO Box 100-208
NSMC, AUCKLAND
(Agents for 'Wasser' & 'Xymax')

Wattyl (NZ) Ltd
Tel (09) 828 4009
Fax (09) 820 3271
PO Box 1545, AUCKLAND
(Agent for 'Sigma' coatings)

Appendix 2

PROTECTIVE COATING SPECIFICATIONS

1. Clear coating system
2. Aluminium epoxy coating system
3. Moisture cure urethane system
4. Alkyd coating system
5. High performance coating system

SYSTEM 1 (CLEAR COATING)

1. Scope

This specifies a protective coating system to be used to preserve unpainted wrought iron or steel work outdoors that is exposed to contact by the public and/or animals, where a durable finish coat is required that does not significantly change the original rusted appearance of the item.

2. Materials

2.1 *Sealer/primer*

The primer shall be an approved low viscosity 100% volume solids epoxy in a clear colour.

Examples of this material are Altex 'Altra~Lock 577' and their low temperature/rapid cure version 'Altra~Lock 576', Ameron's 'Amerlock Sealer', Carboline's 'Rustbond Penetrating Sealer', and Resene's 'ArmourBond'.

2.2 *Finish coat*

The finish coat shall be an approved acrylic modified polyurethane or polysiloxane in a clear colour with a flat or low-gloss finish.

Examples of this material are Altex 'Devthane 379' + 'Flattening Agent', Ameron's 'PSX 700', Carboline's 'Carboline 133 HB', and Resene's 'Uracryl 404'.

3. Preparation

Where surfaces are covered with biogenic surface contamination such as algae, moss and lichens, pretreat with a 1.5% solution of benzylalkonium chloride biocide (e.g. 'Wet'n Forget', 'Clene Up', 'Ultramate', or 'Synthecol Quad LF') in water applied by brush or low-pressure garden spray and leave for at least 24 hours. Biocide to be applied when no rain is forecast for at least 24 hours. Note that this material is non-bleaching and biodegrades at below 20 ppm.

Carefully remove loosely adherent rust scale, flaking paint (if present), dirt and other surface deposits by hand tools such as chipping hammer, scrapers and wire brush. Following this, thoroughly scrub all surfaces with a nylon brush using water and a non-ionic detergent (Castrol 'Flexiclean' or equivalent), followed by a low-pressure fresh water rinse to remove any soluble non-visible contaminants from pits and crevices.

4. Application

Apply a single coat of the sealer/primer followed by two coats of the finish coat material (all from the same manufacturer wherever possible), allowing the recommended cure time between coats. Apply all coatings by brush to dry surfaces at above 10°C, working material into all crevices and any residual rust. Do not overbuild the primer and remove excess material, e.g. from ponding in pits.

Coatings are to be mixed and applied in accordance with the manufacturer's instructions. A copy of the product data sheet and material safety data sheet (MSDS) shall be available on site for all materials used including thinners. Follow the manufacturer's health and safety recommendations.

SYSTEM 2 (ALUMINIUM EPOXY COATING)

1. Scope

This specifies a protective coating system to be used to preserve wrought iron or steel work outdoors that is exposed to contact by the public and/or animals, where a metallic aluminium finish coat is required and preparation by abrasive blasting is not permitted or possible.

2. Materials

2.1 Epoxy mastic

The coating shall be an approved high-build, aluminium pigmented, surface-tolerant epoxy mastic that conforms to AS 3750.1. Examples of this material are Altex 'Bar Rust 236', Ameron's 'Amerlock 2, Carboline's 'Carbomastic 15' and Resene's 'Alumastic'.

3. Preparation

Where surfaces are covered with biogenic surface contamination such as algae, moss and lichens, pretreat with a 1.5% solution of benzylalkonium chloride biocide (e.g. 'Wet'n Forget', 'Clene Up', 'Ultramate', or 'Synthecol Quad LF') in water applied by brush or low-pressure garden spray and leave for at least 24 hours. Biocide to be applied when no rain is forecast for at least 24 hours. Note that this material is non-bleaching and biodegrades at below 20 ppm.

Remove loosely adherent rust scale, flaking paint (if present), dirt and other surface deposits by hand tools such as chipping hammer, scrapers and wire brush. Following this, thoroughly scrub all surfaces with a nylon brush using water and a non-ionic detergent (Castrol 'Flexiclean' or equivalent), followed by a low-pressure fresh water rinse to remove any soluble non-visible contaminants from pits and crevices.

4. Application

Apply at least two spray coats or three heavy brush coats of epoxy mastic, allowing the recommended cure time between coats. Apply all coatings to dry surfaces at above 10°C, working material into all crevices and any residual rust, and ensuring a good build is achieved on all edges.

Coatings are to be mixed and applied in accordance with the manufacturer's instructions. A copy of the product data sheet and material safety data sheet (MSDS) shall be available on site for all materials used including thinners. Follow the manufacturer's health and safety recommendations.

SYSTEM 3 (MCU COATING)

1. Scope

This specifies a protective coating system to be used to preserve wrought iron or steel work outdoors that is exposed to contact by the public and/or animals, where a durable finish coat is required that can be applied under cold and/or damp conditions. This system shall also be used to overcoat/encapsulate old systems where lead-based primers have been used.

2. Materials

2.1 *Sealer/primer*

The primer shall be an approved aromatic moisture cure urethane (MCU) sealer/primer complying with AS/NZS 3750.18.

Examples of this material are Carboline's 'E21 Primer', and Fortec's 'Wasser MC-Prepbond', and 'Xymax MonoLock'.

2.2 *Intermediate/tie coat*

This shall be an approved aromatic MCU tiecoat that is pigmented with micaceous iron oxide (MIO) suitable for overcoating aged alkyds.

Examples of this material are Fortec's 'Wasser MC-Miomastic' and 'Xymax Xyguard'.

2.3 *Finish coat*

This shall be an approved aliphatic MCU pigmented with MIO coloured light grey in a low gloss finish or, where a coloured finish is required, an approved acrylic-modified two-pack polyurethane (2PU).

Examples of the MCU material are Fortec's 'Wasser MC-Ferrox B' and Xymax 'Bridge Finish'. For examples of 2PU, refer to System1 (e.g. Resene's 'Uracryl' range).

2.4 *Tar-based finish coat*

Where a tar-based coating is required for steel work in contact with soil or water, or when previously coated with coal tar epoxy or a bituminous material (e.g. coal wagons), use a high-build MCU, preferably manufactured with a synthetic tar.

An examples of this material is Fortec's 'Wasser MC-Tar'. An alternative is Carboline's 'Polyline 1300' (note a 2 pack material which contains coal-tar also requires additional safety precautions during application).

Continued on next page

3. Preparation

Where surfaces are covered with biogenic surface contamination such as algae, moss and lichens, pretreat with a 1.5% solution of benzylalkonium chloride biocide (e.g. 'Wet'n Forget', 'Clene Up', 'Ultramate', or 'Synthecol Quad LF') in water applied by brush or low-pressure garden spray and leave for at least 24 hours. Biocide to be applied when no rain is forecast for at least 24 hours. Note that this material is non-bleaching and biodegrades at below 20 ppm.

Remove loosely adherent rust scale, flaking paint (if present), dirt and other surface deposits by hand tools such as chipping hammer, scrapers and wire brush. Following this, thoroughly scrub all surfaces with a nylon brush using water and a non-ionic detergent (Castrol 'Flexiclean' or equivalent), followed by a low-pressure fresh water rinse to remove any soluble non-visible contaminants from pits and crevices.

4. Application

Apply a single coat of the sealer/primer to areas of bare steel followed by a full coat of the intermediate/tiecoat, then apply a single finish coat in the required gloss level and colour allowing the recommended cure time between coats. When using the tar-based finish coat, apply two heavy coats directly over primed surfaces. Apply all coatings by brush and/or roller, working material into all crevices and any residual rust. Where a rapid cure is required, the primer and intermediate coat may have their cure accelerated, but this isocyanate-modified material shall not be applied to damp surfaces.

Coatings are to be mixed and applied in accordance with the manufacturer's instructions. A copy of the product data sheet and material safety data sheet (MSDS) shall be available on site for all materials used including thinners. Follow the manufacturer's health and safety recommendations.

SYSTEM 4 (ALKYD COATING)

1. Scope

This specifies a protective coating system to be used to preserve previously painted wrought iron or steel work outdoors, where a traditional finish coat is required using alkyd (i.e. thinned with turpentine) paint to preserve the original appearance of the item.

2. Materials

2.1 *Penetrating liquid*

The penetrating liquid shall be an approved low viscosity oil-based material with corrosion inhibiting pigmentation.

Examples of this material are Altex 'RIPO' and Wattyl's 'Killrust Fishoilene'.

2.2 *Metal primer*

The primer shall be an approved zinc phosphate pigmented, high-build alkyd primer complying with AS 4089, Type 2.

Examples of this material are Altex 'High Build Rust Barrier', Wattyl's 'Killrust Metal Primer' and Resene's 'Rust-Arrest'.

2.3 *Finish coat*

The finish coat shall be an approved alkyd enamel in grey MIOX, red-oxide, or black colour.

Examples of this material are Altex 'Isotal Ferroxx', Wattyl's 'Killrust Roof Paint' and Resene's 'Micabond' or 'Supergloss Enamel'.

3. Preparation

Where surfaces are covered with biogenic surface contamination such as algae, moss and lichens, pretreat with a 1.5% solution of benzylalkonium chloride biocide (e.g. 'Wet'n Forget', 'Clene Up', 'Ultramate', or 'Synthecol Quad LF') in water applied by brush or low-pressure garden spray and leave for at least 24 hours. Biocide to be applied when no rain is forecast for at least 24 hours. Note that this material is non-bleaching and biodegrades at below 20 ppm.

Carefully remove loosely adherent rust scale, flaking paint (if present), dirt and other surface deposits by hand tools such as chipping hammer, scrapers and wire brush. Collect any flakes of lead paint and remove from site for safe disposal, then thoroughly scrub all surfaces with a nylon brush using water and a non-ionic detergent (Castrol 'Flexiclean' or equivalent), followed by a low-pressure fresh water rinse to remove any soluble non-visible contaminants from pits and crevices.

4. Application

Apply a coat of penetrating liquid to all crevices, then two coats of the metal primer to all bare surfaces, followed by two full coats of the finish coat material, allowing the recommended dry time between coats. Apply all coatings by brush to dry surfaces at above 10°C, working material into all crevices and any residual rust. Remove excess penetrating material, e.g. from ponding in pits, by wiping with a clean rag before priming.

Coatings are to be mixed and applied in accordance with the manufacturer's instructions. A copy of the product data sheet and material safety data sheet (MSDS) shall be available on site for all materials used including thinners. Follow the manufacturer's health and safety recommendations.

SYSTEM 5 (HIGH PERFORMANCE COATING)

1. Scope

This specifies a protective coating system to be used to preserve wrought iron or steel work outdoors that is exposed to contact by the public and/or animals, where a very durable system and high gloss chemical-resistant finish coat is required. This system should only be used where abrasive blasting is possible.

2. Materials

2.1 Primer

The primer shall be an approved inorganic zinc silicate primer complying with AS/NZS 3750.15.

Examples of this material are Altex's 'Zinc Silicate 8641', Carboline's 'Carbozinc 11', and Resene's 'Zincilate 11'.

Alternatively, the steel surface may be primed with thermally applied zinc metal (99.9% purity).

2.2 Intermediate coat

This shall be an approved high-build epoxy coating complying with AS/NZS 3750.14.

Examples of this material are Altex's 'Bar-Rust 236', Carboline's '893 FD', and Resene's 'Armourcote 515'.

2.3 Finish coat

This shall be an approved high gloss aliphatic polyurethane complying with AS/NZS 3750.6.

Examples of this material are Altex's 'Devthane 379', Carboline's '134', and Resene's 'Imperite 413'.

3. Preparation

Remove any grease or oil by solvent cleaning or detergent washing, then remove rust and scale by abrasive blasting to AS 1627.4 to achieve a 'Commercial' or 'Sa 2' standard of cleanliness in accordance with ISO 8501-1. If dry blasting, follow with a low-pressure fresh water rinse to remove any soluble non-visible contaminants from pits and crevices, then re-abrasive blast to achieve a 'Near-white' or 'Sa 2½' standard of cleanliness in accordance with ISO 8501-1, and with a surface profile of between 50 and 75 µm. In coastal locations (to aid in removal of marine salts), leave overnight before reblasting.

4. Application

Apply a single coat of the zinc silicate primer to the prepared steel to achieve a minimum average dry film thickness (DFT) of 75 µm, followed by the high-build epoxy in one or more coats to give a total minimum DFT of 275 µm. (Alternatively, this can be achieved by arc spraying 200 µm of zinc metal and applying by spray a 75 µm seal coat of epoxy.) Apply a single finish coat in the required gloss level and colour of the polyurethane with a DFT of 75 µm, allowing the recommended cure time between coats.

Coatings are to be mixed and applied in accordance with the manufacturer's instructions. A copy of the product data sheet and material safety data sheet (MSDS) shall be available on site for all materials used including thinners. Follow the manufacturer's health and safety recommendations.

