

Enjoy the Kaikōura Coast

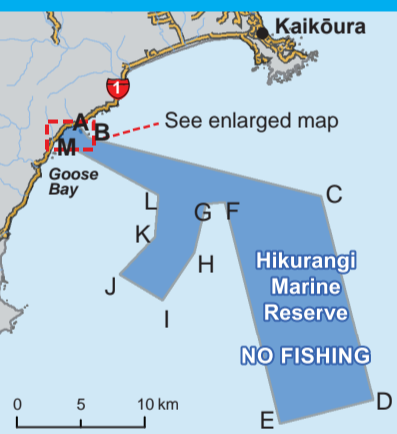
NEW MARINE PROTECTION IN PLACE

Kaikōura has a marine reserve, taiāpure, mātaimai, rāhui, fur seal sanctuary, whale sanctuary and new recreational fishing rules.
Know the rules before you fish.

HIKURANGI MARINE RESERVE AND RĀHUI ON KAIKŌURA PENINSULA



Hikurangi Marine Reserve boundaries



	Latitude	Longitude
A	42° 27.509' S	173° 33.405' E
B	42° 28.082' S	173° 33.960' E
C	42° 29.721' S	173° 43.631' E
D	42° 36.049' S	173° 45.819' E
E	42° 36.763' S	173° 41.895' E
F	42° 29.895' S	173° 39.575' E
G	42° 29.940' S	173° 38.770' E
H	42° 31.469' S	173° 38.285' E
I	42° 32.952' S	173° 36.931' E
J	42° 32.133' S	173° 35.147' E
K	42° 30.971' S	173° 36.611' E
L	42° 29.687' S	173° 36.762' E
M	42° 27.951' S	173° 32.462' E

Kaikōura Rāhui boundaries



	Latitude	Longitude
A	42° 24.79' S	173° 42.19' E
B	42° 24.54' S	173° 42.32' E
C	42° 24.80' S	173° 42.80' E
D	42° 25.01' S	173° 42.57' E
E	42° 25.02' S	173° 42.50' E

Swim, dive and enjoy
but no fishing or
collecting any marine life

CONTACT US:

- ▶ For more information on the Kaikōura marine management area Te Korowai o Te Tai o Marokura visit teamkorowai.org.nz
- ▶ For fishing regulations visit mpi.govt.nz or contact MPI on (03) 319 6570
- ▶ For details on the Hikurangi Marine Reserve and marine mammal sanctuaries visit doc.govt.nz/kaikoura-marine or contact DOC on (03) 572 9100

NEW FISHING REGULATIONS

The recreational fishing rules for the Kaikōura Marine Area have changed. Make sure you are up-to-date with the changes summarised below. **The marine reserve and rāhui are closed to all fishing/collecting.** In the taiāpure and mātaimai – recreational fishing is permitted, but you must follow the new rules.

Finfish

Species	Maximum daily limit per fisher	Minimum length (cm)
Blue cod	6	33
Tarakihi	10	25
Sea Perch	20	26
Kahawai	10	No limit
Butterfish	10	35
Red Moki	NO TAKE	
Blue Moki	10	40
Rig	3	No limit
School shark	3	No limit
Kingfish		75
Bass and Hapuku	Daily combined bag limit of 5 per person with a maximum of 3 of any one species	No limit
Bluenose		No limit
Ling		No limit
Albacore tuna		No limit
Game sharks (seven-gilled shark, mako shark, blue shark, hammerhead shark, porbeagle shark, thresher shark)	1 game shark total	No limit

Shellfish

Species	Maximum daily limit per fisher	Minimum size (mm)
Ordinary paua	6	125
Yellow foot paua	6	80
Pupu (Cat's eye)	20	No limit
Cockles	50	No limit
Kina	20	No limit
All "other shellfish" as specified in the regulations	30	No limit

Seaweed

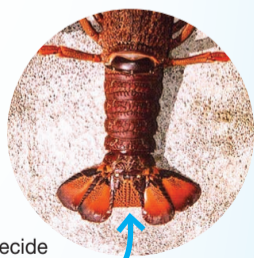
Species	Maximum daily limit per fisher	Restriction
Karengo	5 litre wet volume measured in a 5 litre bucket	Require hand gathering
Bladder kelp	5 litre wet volume measured in a 5 litre bucket	Require hand gathering

Rock Lobster

Species	Maximum daily limit per fisher	Restriction
Rock Lobster	6	Size limits remain unchanged. Telson clipping now required for spiny rock lobster. Accumulation limit of 18 (3 day take) for spiny rock lobster

What is the 'telson clipping' rule?

The telson is the central part of the tail fan on a rock lobster. Telson clipping is a way of marking spiny rock lobster to make it clear that they have been recreationally caught. One-third of the telson is cut off so that it is noticeably shorter than the other sections of the tail fan. (See picture). As soon as you decide to keep the spiny rock lobster it must be clipped.



How do I find out more?

- ▶ Download our free Smartphone app by texting the word 'app' to 9889 OR by scanning the QR code. The app works even when you have no coverage.
- ▶ **Free text** the name of the species you are fishing for (e.g. blue cod or paua) to 9889 and receive legal size and bag limit via return text.
- ▶ Visit www.mpi.govt.nz for a full recreational fishing rules brochure for the Kaikōura Marine Area.

