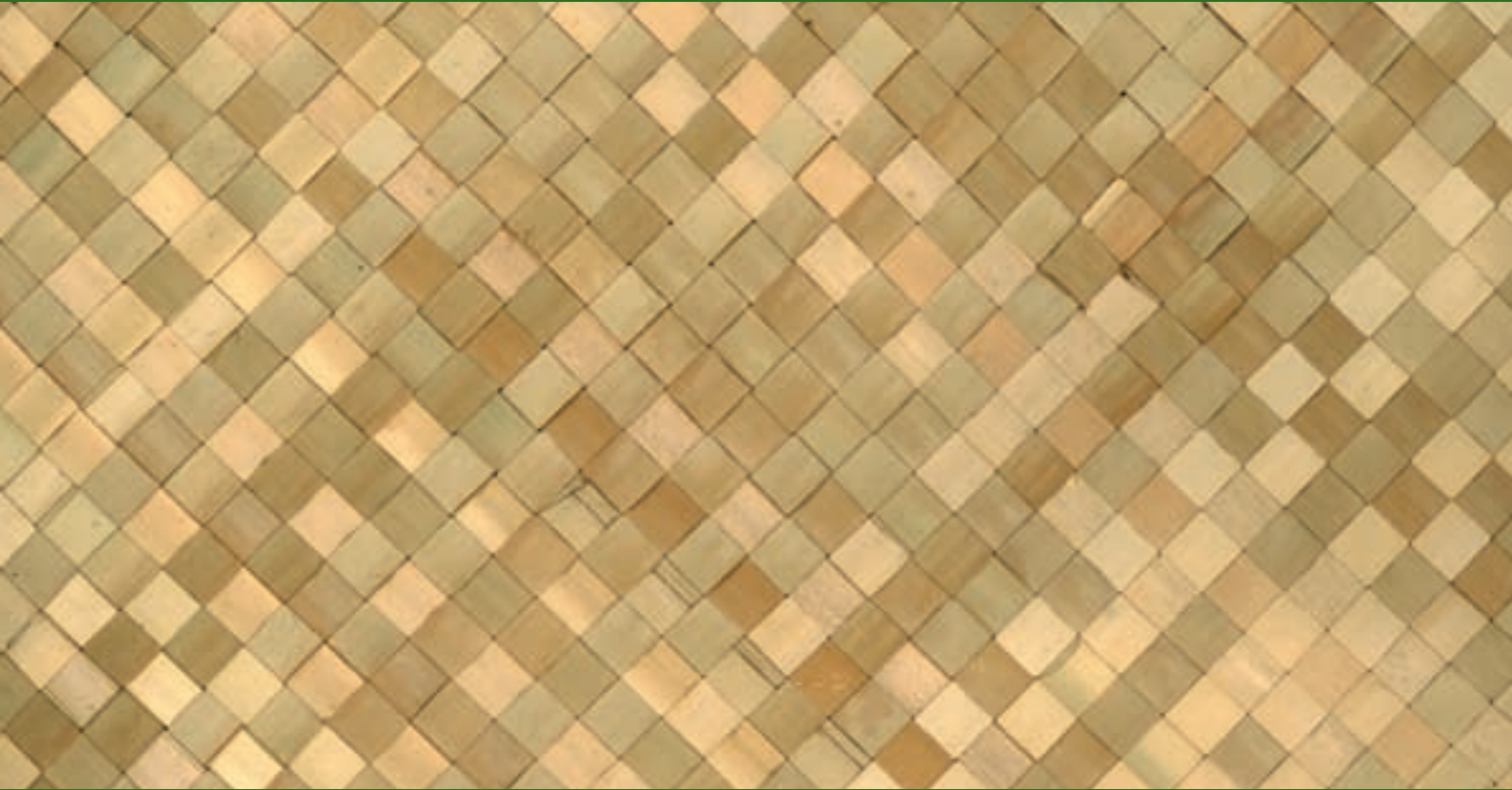
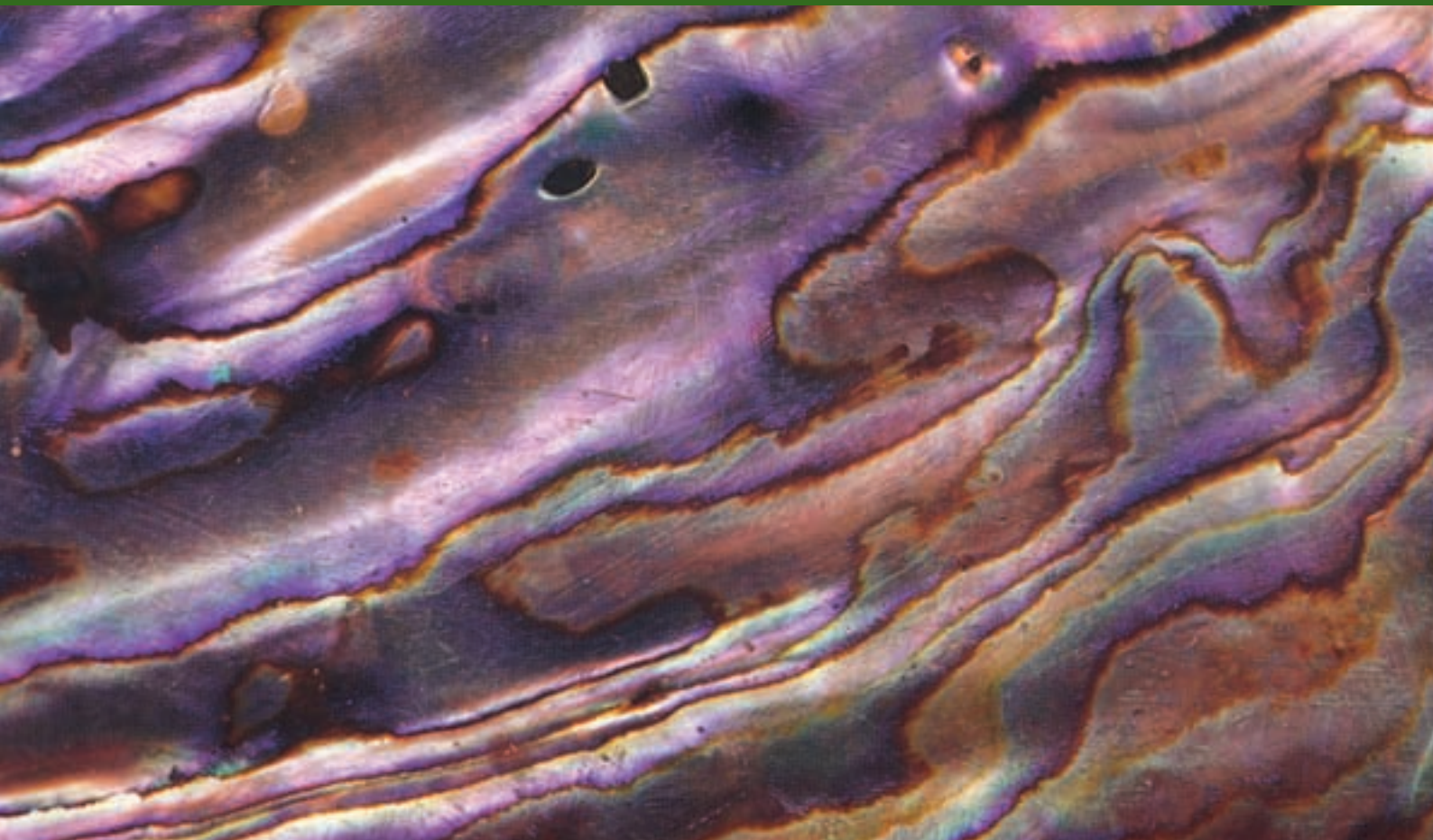


# Maori methods and indicators for marine protection



Ngati Konohi interests and  
expectations for the rohe moana





*Kaiora Pa looking north to Whangara*

Kia whakanuitia, kia manaakitia, te oko a Tangaroa mo nga mokopuna e whai ake nei

To honour and sustain the bounty of Tangaroa for present and future generations

This report was prepared by a community research team comprising Ngati Konohi, Department of Conservation and Ministry for the Environment

The photos are from East Coast/Hawke's Bay Conservancy and DOC's Information Resource Centre, Wellington, the maps by Chris Edkins

Publication was approved by the Chief Scientist (Research, Development & Improvement Division), Department of Conservation, Wellington, New Zealand (editing by Jaap Jasperse of Science & Technical Publishing Section)

Design and layout by Becky Bliss

ISBN 0-478-22673-X

© April 2005 New Zealand Department of Conservation, Ngati Konohi and Ministry for the Environment

This is a Foundation of Research, Science and Technology-funded research study

The views and opinions expressed in this publication are those of the authors and do not necessarily reflect those of the Government or the Minister of Conservation or the Minister for the Environment

# Contents

<b>INTRODUCTION</b>	<b>5</b>
<b>BACKGROUND</b>	<b>6</b>
<b>METHODOLOGY</b>	<b>8</b>
<b>FINDINGS</b>	<b>9</b>
Goals and aspirations for the Rohe Moana	9
Tino Rangatiratanga	11
Kaitiakitanga	12
Education	13
More Kaimoana	14
Clean and Safe Rohe Moana	15
Mahi	16
Environmental Enhancement	16
Species of Importance in the Rohe Moana	17
Fauna	17
Flora	17
Marine Management	21
Kaitiaki	22
Marine Reserve	23
Mataitai	25
Taiapure	26
Fishing Regulations	27
Summary	27
<b>ENVIRONMENTAL TOHU OR SIGNS</b>	<b>28</b>
<b>CONCLUSIONS</b>	<b>30</b>
<b>RESOURCES</b>	<b>32</b>
<b>APPENDICES</b>	<b>33</b>
Appendix 1: Intellectual Property Protocol	32
Appendix 2: Process to Establish Te Tapuwae o Rongokako Marine Reserve	34
Pre-statutory Process	35
Statutory Process	37
Checking the Process	37
Management of the Marine Reserve	38
Summarising a Decade of Deliberation	38
Appendix 3: Background on Maori Environmental Indicators/tohu	39
What are tohu?	40
Background	40
Objective of Maori marine tohu project	40

Why Ngati Konohi might want to develop tohu	40
Why MfE and DOC are interested in tohu	41
Things to think about when talking to hapu about tohu they would use to assess the health of their rohe	41

# Introduction

This report from the Ngati Konohi, Department of Conservation (DOC) and Ministry for the Environment (MfE) community research team aims to explore how different marine management systems are able to meet the goals and aspirations of Ngati Konohi in their rohe moana/coastal area and also meet wider conservation objectives. The marine management systems referred to in this project include marine reserves, taiapure/locally managed sea area, mataitai/reserved sea area for marae use and tangata kaitiaki/ caretakers of a given area.

The purpose of this report is to identify:

- Ngati Konohi's future goals and aspirations for the rohe moana
- The key species of importance to Ngati Konohi in the rohe moana
- How Ngati Konohi would like to use the different marine management systems in the rohe moana
- The tohu/signs or indicators that have traditionally been used or that are currently used by Ngati Konohi to tell them whether the rohe moana is healthy.

The report also contributes towards the second stage of the community research project which involves developing, monitoring and reporting on Ngati Konohi's tohu for the rohe moana.



*Rahui Pou, overlooking Te Tapuae o Rongokako Marine Reserve; it was erected by Ngati Konohi for the opening of the reserve in November 1999*

Continue to next file: NgatiKonohi02.pdf