

Hump Ridge Great Walk Project

Community update

18 October 2021



Department of
Conservation
Te Papa Atawhai

New Zealand Government



Opening Karakia
Riki Dallas – Kaihautù, Ōraka-Aparima Rūnaka



Welcome
Aaron Fleming – Director Operations, Southern South Island


Community Information Session Programme

- ▶ Hump Ridge Great Walk Project Visitor Experience and Interpretation Update
- ▶ Hump Ridge Great Walk Project Update
- ▶ Hump Ridge Great Walk Project Partners
- ▶ General Discussion / Q & A Session



Visitor Experience and Interpretation

Kate Woodall – Interpretation Advisor



What outcome are we seeking?

Creating a connected visitor experience that coherently weaves the natural and cultural heritage stories of this place and its people.

Why is interpretation important?

Well-designed interpretation touchpoints help connect people to the significant natural and cultural heritage values they will be interacting with, supporting a more enriched experience.

Visitor Experience and Interpretation

How will the project do this?

Working closely with iwi and the community, through a series of workshops and individual conversations.

The key storytelling principles being applied:

- Bilingual panels and interpretation, led by mana whenua.
- Inclusive storytelling, that highlights the hidden and the challenging histories.
- Providing a balance of natural and cultural heritage stories.
- Interpretation that is sensitive to the place and does not overwhelm or impinge on the natural environment.
- Employing materials that speak to the stories and place e.g. rough sawn wood, Corten steel.

Visitor Experience and Interpretation

Hump Ridge Great Walk

High Level Concept

Illustrated here is current thinking about the kinds of stories that might be shared via interpretation on this experience. Storytelling and interpretation touch-points are aligned to natural rest and accommodation stops en-route. Images are for conceptual purposes only.



On-going work:

- Working with others, including Ōraka Aparima, Rowallan Alton Inc, SILNA landowners and the Tuatapere Hump Track Charitable Trust on interpretation touchpoints along the track.
- Exploring opportunities for additional story sharing off the track e.g. this could be digital content, interviews with people who have connections to this place.
- Exploring opportunities to enable visitors to contribute to the existing community initiatives that care for this place e.g. to support predator control efforts, carbon offsetting, heritage conservation.

The project team and partners will progress these initial interpretation ideas into more detailed designs.

Visitor Experience and Interpretation



Infrastructure

Mark Symons – Project Manager

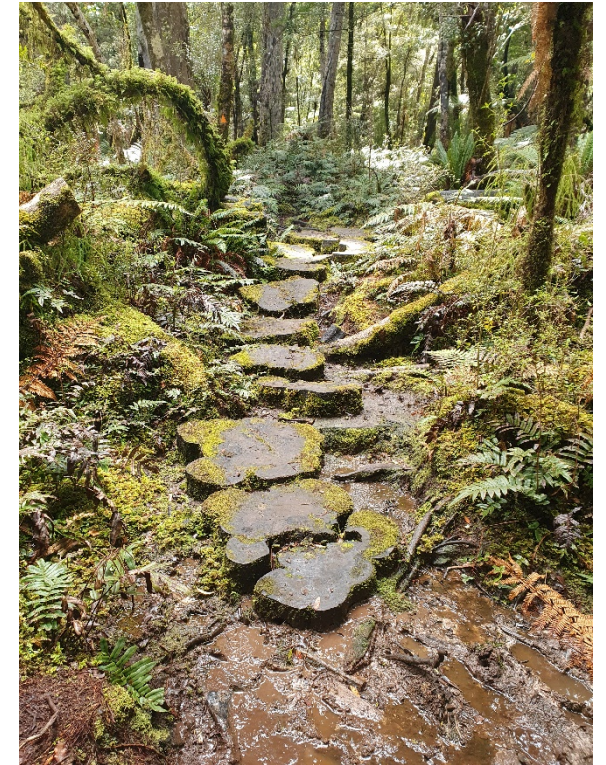
Track Infrastructure Works

- Track upgrade works to 70% of the track to ease grades and improve the walking surface, including additional boardwalks and bridging, surface and drainage upgrade.
- Building of redundancy into the 3 viaduct crossings to ensure the track can remain open, this includes;
 - ❖ A new swing bridge across the Edwin Burn
 - ❖ Upgrade of the Percy Burn bypass track
 - ❖ A new bypass track and bridge at Sandhill Viaduct.



Infrastructure Works

- ▶ Most of the track work is to deal with the mud and gradient issues.



Infrastructure Works

Other infrastructure works include

- ▶ Additional toilets and shelters at Edwin Burn and Flat Creek
- ▶ Redevelopment of the Rarakau car park including additional toilets and a realignment of the track start.
- ▶ The track signage will also be upgraded to reflect its Great Walk status



Rarakau Car Park Redevelopment



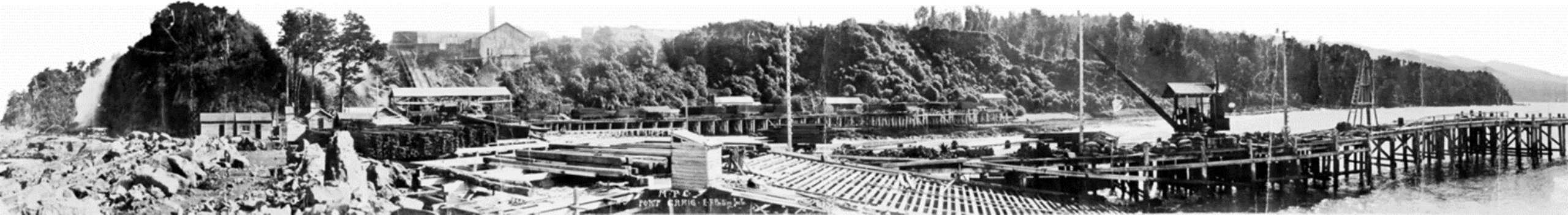


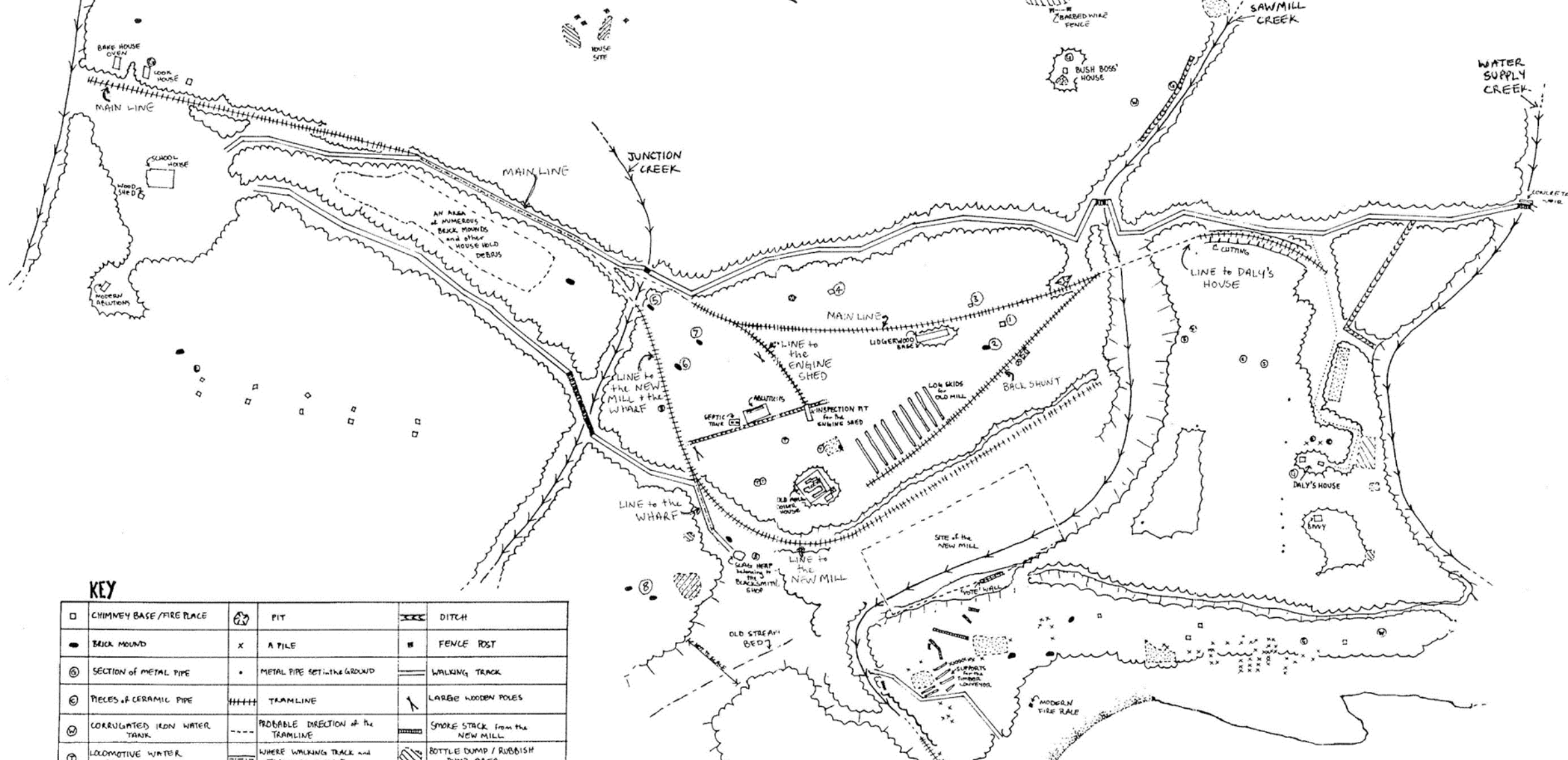
Managing the Heritage Experience

Matt Schmidt – Senior Heritage Advisor

Goals in managing heritage for track development

- ▶ Understanding the history of the area - Māori & Pakeha.
- ▶ Understanding what heritage management work has been undertaken in the past.
- ▶ How is the heritage managed today? – DOC work & the volunteers.
- ▶ Forming a new understanding – re-surveying and recording.
- ▶ Production of guidance on heritage management for now and the future:
 - Port Craig Conservation Plan & Mapping
 - Heritage Track Development Guidance & Instruction
- ▶ Telling the story – updated interpretation





Port Craig as mapped in 1996 (Jackie Breen). The settlement will be re-mapped using GIS equipment.



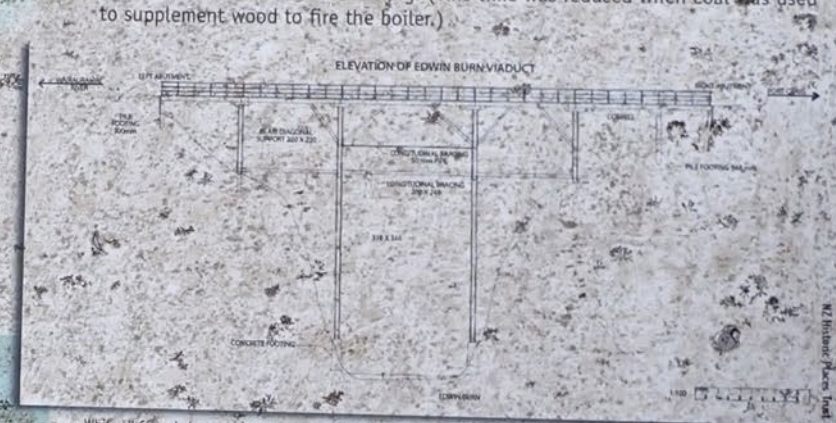
The updated Conservation Plan will ensure conservation authenticity



Heritage Track Development Guidance will ensure the track retains the heritage experience

doing in the middle of nowhere?

Between 1916 and 1928 this was part of the most ambitious milling project New Zealand had ever known. You are standing on a tramway that once ran over 14 km from the mill settlement at Port Craig almost to the Wairaurahiri River.



While all four viaducts share common characteristics, there are also some differences. The Edwin Burn viaduct was designed with a longer central span (12.2 m) to avoid building concrete foundations in the river.

Point of difference

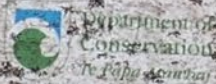
The Edwin Burn viaduct is the only one that stands on Māori land, originally granted under the South Island Landless Natives Act of 1906. How this came to be and the difficulties that resulted are explained at the Percy Burn viaduct. Today's partnership between the Māori Trustee and other stakeholders of this historic site requires respect from all users to safeguard the privilege of access.

Track-side relics

Port Craig mill closed in 1930. In 1937, when all hope of revitalising the timber milling enterprise had faded, most plant and equipment was removed including the tramline rails and points. The wooden sleepers, however, were left intact and remain a feature of the track. So too are impressive cuttings and, for the sharp-eyed, an assortment of rusting relics, largely reclaimed by the undergrowth. Please leave all relics where they are for others to appreciate.



The scale of the enterprise was breathtaking. No effort or expense was spared to ensure the most efficient supply of logs to feed the mill saws.



New interpretation will improve the heritage experience and widen the stories of the area



Hump Ridge Great Walk Project Communications

Keeping You Informed

Stay up to date with the latest news



▶ Hump Track Project “Happenings”

This is a regular newsletter to bring you the latest project updates, stories and events from the project team.

▶ On The Web

Our brand-new webpage will share updated project information, check it out on; www.doc.govt.nz/hump-ridge-great-walk-project

▶ Project Email

Get all the facts , stay informed or ask a question;

HumpRidgeGWP@doc.govt.nz

Media enquiries: please direct to media@doc.govt.nz



Tuatapere Hump Track Charitable Trust



General Discussion / Q & A's



Photos: Liz Carlson ©

Ngā mihi